

DRAFT FOR TEXT AREAS EXPLANATION ONLY. DRAFT CAN BE DIFFERENT TO THE REAL PART.

IDENTIFICATION	DESIGNATION	KIND OF MARKING	COLOUR	SIZE OF TYPES RESP. STANDARD	REMARKS
e	PROVIA - LOGO	TAMPON / UV-BRANDING	WHITE	SIZE 6	
f	PROVIA - SET NUMBER	TAMPON / UV-BRANDING	WHITE		
g	PROVIA - SALES REFERENCE, US-CODE (WHEN EXIST)	TAMPON / UV-BRANDING	WHITE		
h	NUMBER OF WVA	TAMPON / UV-BRANDING	WHITE	HEIGHT OF CHARACTERS 5±1MM HEIGHT OF CHARACTERS AND POSITION OF THE MARKING MAY BE ACC. TO THE SHAPE OF THE BACKING PLATE	
j	NUMBER OF ECE	TAMPON / UV-BRANDING	WHITE		
k	COUNTRY OF ORIGIN	TAMPON / UV-BRANDING	WHITE		
l	BATCH NUMBER	TAMPON / UV-BRANDING	WHITE		
m	ENVIRONMENTAL MARKING ACC. TO SAE J866 JUL2012 OR LATEST	TAMPON / UV-BRANDING	WHITE		

- (A) MAX. 10% LACQUER PERMITTED, WITHOUT MOULD SKIN. (ACC. TO FINISHING CODE)
- (B) FIRMLY ATTACHED BURR AROUND PAD CONTOUR PERMITTED, MUST NOT PROTRUDE BEYOND BACKING PLATE

POS.	NAME	QUANTITY
1	BRAKE PAD	4

General Specification: JED-334-1 - Size ISO 14405 LP		Copyright WABCO®	
Further Technical Data: Part Specification		Date: 2018-07-18	Signature: [Blank]
Doc. Code: 014	Sheet: 1 To 4	Drawn: [Blank]	Checked: [Blank]
General Tolerances JED-261		2018-07-18	
Range of Nominal Dimensions ( ± mm)		Marcinkiewicz	
Class	1)	≤ 50	> 180
		≤ 180	≤ 400
		> 400	±3°
Class	1)	0.5	1.0
		1.5	2.0
		3.0	4.0
		5.0	6.5
Tapped Holes acc. -		1)	
1) Tolerance Class Applied Crossmarked			

Material No.	Date of first issue:
340 902 000 2	2016-03-26
Doc. Code	Language
005	EN
Revision	Techn. Resp.
6 x C	0959
Replacement for	

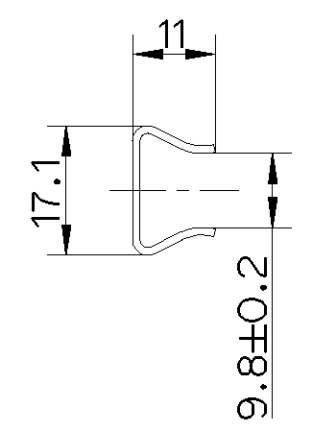
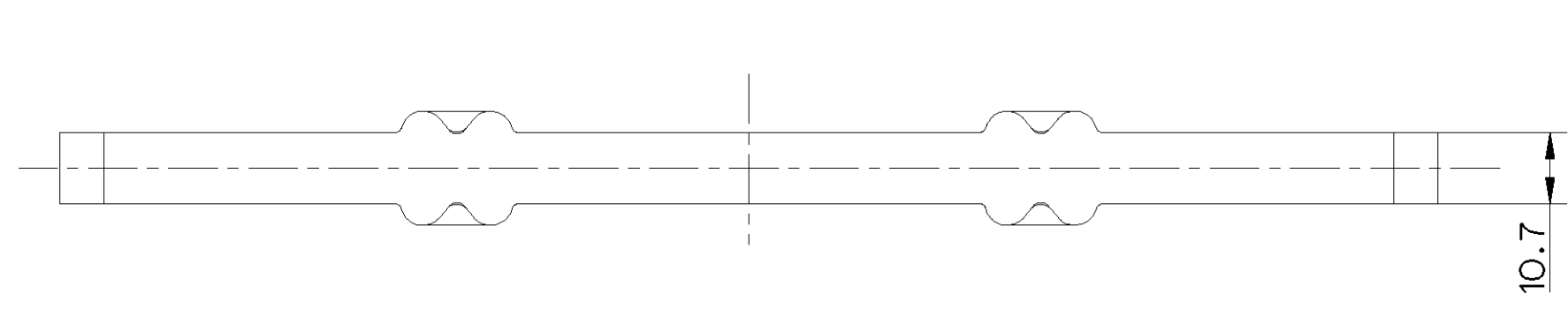
Non e permesso copiare o riprodurre questo documento, ne utilizzare il contenuto a fini commerciali, senza permesso scritto dalla WABCO. Tutti i diritti sono riservati. Copia di questo documento e' vietata senza permesso scritto dalla WABCO. Tutti i diritti sono riservati. This document is the subject of copyright. All rights are reserved.

1 2 3 4 5 6 7 8 9 10 11 12

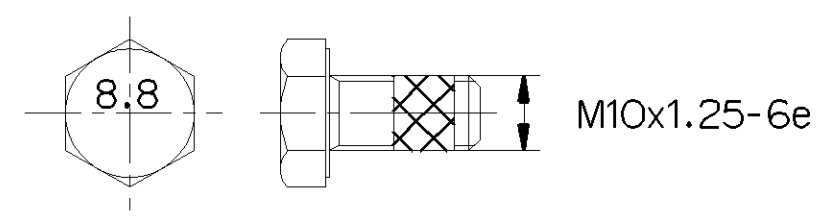
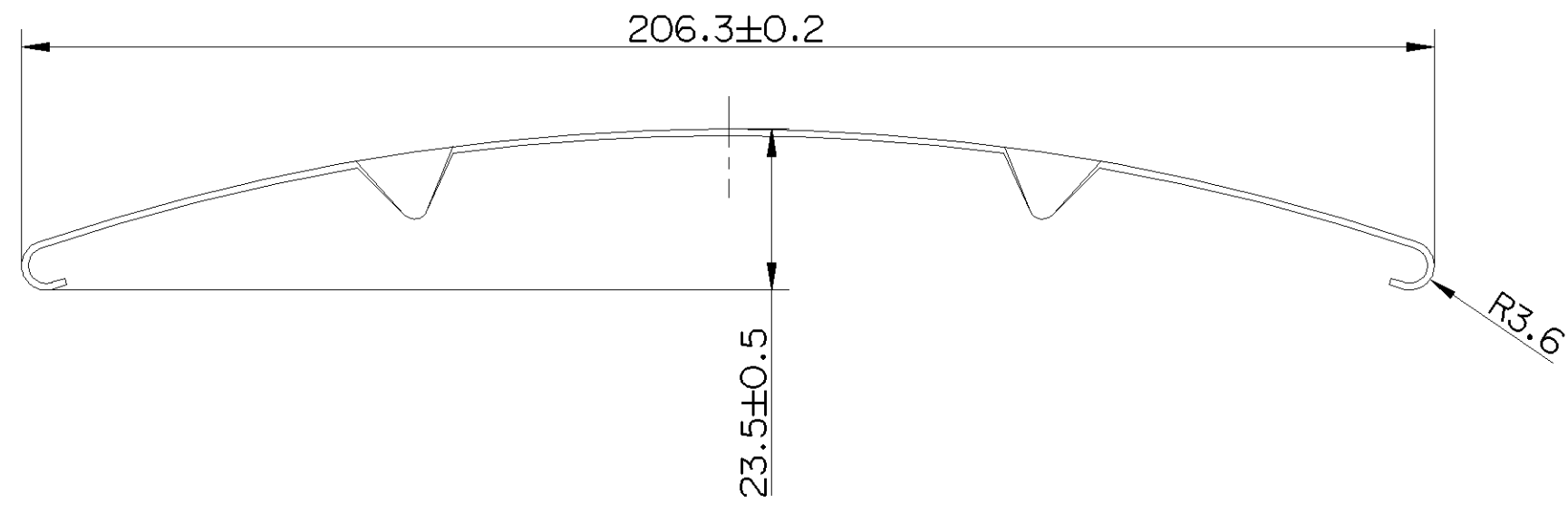
A

B

1.



2.



Non e permesso copiare, o terzi o riprodurre questo documento, ne utilizzare il contenuto o renderlo comunque noto a terzi senza autorizzazione esplicita. Ogni infrazione costituisce un evidente abuso e comportera il risarcimento dei danni subiti. E' fatta riserva di tutti i diritti derivanti da brevetti o modelli.

Copying of this document and giving it to others and the use or communication of the contents thereof, are forbidden without express authority. Controvention of this restriction will constitute an evident abuse and result in a liability to the payment of damages. All rights are reserved in the event of the grant of patent or registration of a utility model or design. This document is the subject of copyright.

Toute communication ou reproduction de ce document, toute exploitation ou communication de son contenu sont interdites, sauf autorisation expresse. Tout manquement a cette regle constitue un abus evident et expose son auteur au versement de dommages et interets. Tous droits de proprieete industrielle reserves, notamment en matiere de brevets et de modesles.

Wiedergabe sowie Vervielfaltigung dieser Unterlagen, Vervielfachen und Mitteilen ihres Inhalts nicht gestattet, soweit nicht ausdrücklich ansonsten, weitergegeben, stellen eine offensichtliche Missbrauch dar und verpflichten zu Schadensersatz. Alle Rechte hier den Fall der Patentierung oder Gebrauchsmuster-Eintragung vorbehalten.

POS.	NAME	QUANTITY
1	PISTON CLIP	4
2	BOLT	2

©

General Specification: JED-334-1, Size ISO 14405 LP		Copyright WABCO®		<b>ProVia</b>		
Further Technical Data: Part Specification		Date	Signature			
Doc. Code: 014		Sheet:	To	2018-07-18	Drawn	Cebula
General Tolerances JED-261		Checked		2018-07-18	Checked	Marcirkiewicz
Range of Nominal Dimensions ( ± mm)		Expert		Liszwan		
Class 1)	≤ 50	> 50 ≤ 180	> 180 ≤ 400	> 400	∇	
Fine	0.5	1.0	1.5	2.0	±3°	
Medium	X 1.0	2.0	3.0	4.0		
Coarse	2.0	3.5	5.0	6.5		
Tapped Holes acc. -		Mass	Scale	Material No.		Date of first issue: 2015-03-26
1) Tolerance Class Applied Crossmarked		0.5 kg	1:1	340 902 000 2		Doc.Code 005
		Size	CAD System	ECN-No.	Revision	Techn. Resp.
		A 2	CREO	176942	6 x C	0959
				Replacement for		Sheet 2/2

1 2 3 4 5 6 7 8 9 10 100mm

A

B

C

D

E

F

G

H