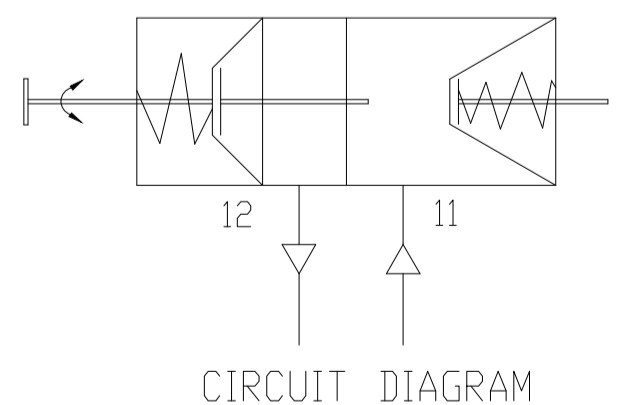
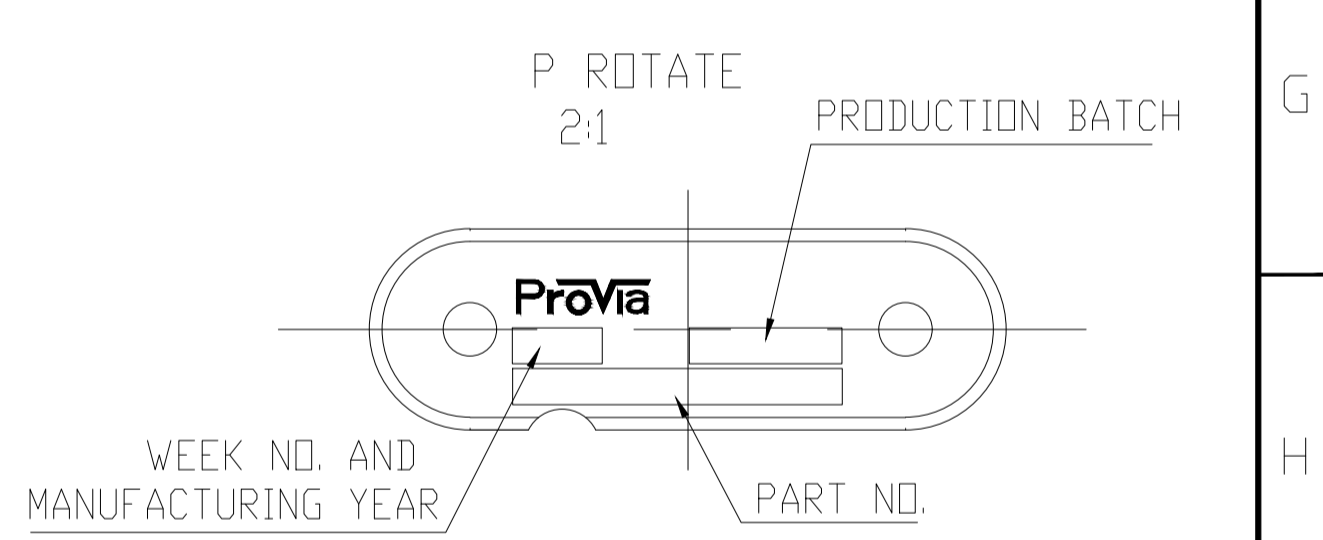


- ① OPEN BREATHER HOLE, DEFLECTION ANGLE $\pm 30^\circ$
- ② TORQUE: $45 \pm 5 \text{ Nm}$; THREAD PLUG IS INSTALLED
- ③ DEFLECTION: MAX 6° AT 0mm STROKE
- ④ TORQUE: $80 \pm 10 \text{ Nm}$
- ⑤ TORQUE: MAX 25Nm
- ⑥ CONDITION AS SUPPLIED: POWER SPRING IS NOT COMPRESSED
- ⑦ SIZE WHEN SPRING COMPRESSED
- ⑧ PARTIAL DEFLECTION ANGLE ALLOWED
- ⑨ TORQUE: $220 \pm 20 \text{ Nm}$
- ⑩ TORQUE: $\geq 25 \text{ Nm}$
- ⑪ DURING DELIVERY CONDITION YOKE IS ASSEMBLED IN ANY OF THE MOUNTING BOLT
- ⑫ THIS PART HAS TO BE ASSEMBLED BY CUSTOMER WITH STAND-OUT ⑬ AND TORQUE ④ AS MENTIONED IN MAIN VIEW
- ⑬ STAND-OUT DIMENSION AFTER ASSEMBLING YOKE



TECHNICAL REQUIREMENT:

1. STROKE-PARKING CHAMBER: $\geq 63.5 \text{ mm}$ (2.5"); SERVICE CHAMBER: $\geq 63.5 \text{ mm}$ (2.5");
2. WORKING PRESSURE: APPLIED PRESSURE 8Bar (116PSI); MAX. WORKING PRESSURE: 10Bar (145PSI);
3. WORKING TEMPERATURE: $-40^\circ\text{C} \dots +80^\circ\text{C}$ ($-40^\circ\text{F} \dots +176^\circ\text{F}$);
4. THE DRAWING IS AT CAGED CONDITION, THE PARKING CHAMBER WILL BE AT UNCAGED CONDITION DURING SHIPMENT

General Specification: JED-334-1, Size ISO 14405 LP		Copyright WABCO®		ProVia	
Further Technical Data: PRO 000 006 0		Date: _____		Signature: _____	
Doc. Code: 035		2018-05-11		Josephselvakumar	
General Tolerances: JED-261		Checked: _____		ASWIKUMAR	
Range of Nominal Dimensions (± mm)		2018-05-11		Suresh Gayakwad	
Class 10		Expert		Material No.	
Class 15		Suresh Gayakwad		PRO 000 006 0	
Class 2.0		Suresh Gayakwad		Date of First Issue: 2018-05-11	
Class 3.0		Suresh Gayakwad		Doc Code: _____	
Class 4.0		Suresh Gayakwad		Language: EN	
Class 5.0		Suresh Gayakwad		Sheet: 1/1	
Class 6.5		Suresh Gayakwad		Replacement for: _____	
Tapped Holes ecc.		A 1		CRED	
Tolerance Class Applied Crossmarked		ECN No.:		Revision: _____	
		Tech. Resp.:		5420_AM	