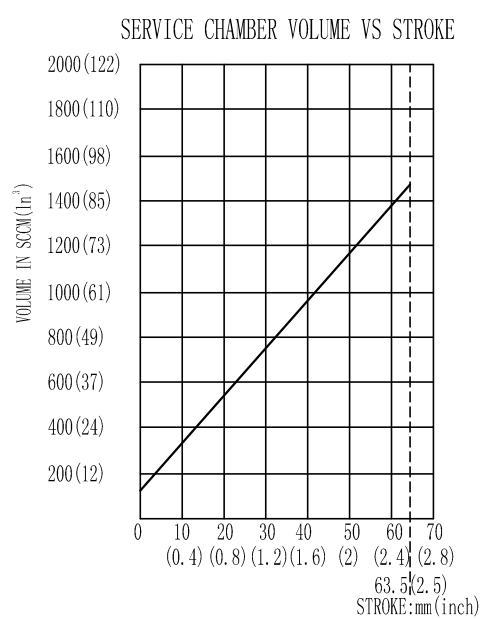
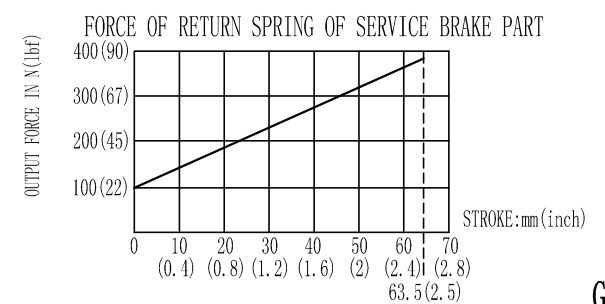
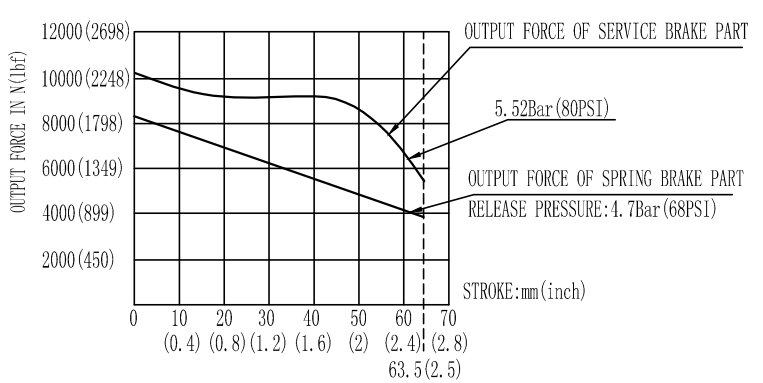


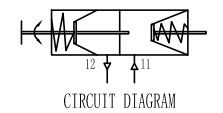
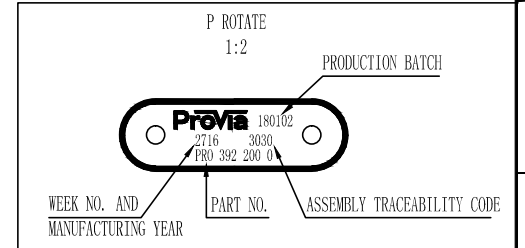
This information is provided for information only. It is not intended to be used as a substitute for the manufacturer's instructions. The user must refer to the manufacturer's instructions for the correct use of the product. The manufacturer is not responsible for any damage or injury caused by the use of the product.



GRAPHS FOR INFORMATION ONLY

- ① OPEN BREATHER HOLE, DEFLECTION ANGLE ±30°.
 - ② TORQUE: 45±5N.m; THREAD PLUG IS INSTALLED.
 - ③ DEFLECTION: MAX 6° AT 0mm STROKE.
 - ④ TORQUE: 80±10N.m.
 - ⑤ TORQUE: MAX 25N.m.
 - ⑥ CONDITION AS SUPPLIED: SPRING RELEASED.
 - ⑦ SIZE WHEN SPRING COMPRESSED.
 - ⑧ PARTIAL DEFLECTION ANGLE ALLOWED.
 - ⑨ TORQUE: 220±20N.m.
 - ⑩ TORQUE: ≥25N.m.
 - ⑪ DURING DELIVERY CONDITION YOKE IS ASSEMBLED IN ANY OF THE MOUNTING BOLT.
 - ⑫ THIS PART HAS TO BE ASSEMBLED BY CUSTOMER WITH STAND-OUT ⑬ AND TORQUE ⑭ AS MENTIONED IN MAIN VIEW.
 - ⑬ STAND-OUT DIMENSION AFTER ASSEMBLING YOKE.
- TECHNICAL REQUIREMENT :
- STROKE - PARKING CHAMBER : ≥63.5mm(2.5"); SERVICE CHAMBER : ≥63.5mm(2.5");
 - WORKING PRESSURE : APPLIED PRESSURE 8Bar(116PSI);
MAX. WORKING PRESSURE : 10Bar(145PSI);
 - WORKING TEMPERATURE : -40°C - +80°C (-40° F - +176° F);
 - THE DRAWING IS AT CAGED CONDITION, THE PARKING CHAMBER WILL BE AT UNCAGED CONDITION DURING SHIPMENT;

SURFACE PROTECTION	
I	ELECTRO-PAINTING
II	ZINC PLATED WITH CR6+ FREE
III	SURFACE OXIDIZATION
IV	HARD POLYETHYLENE
V	STICKER



General Specification ED-204-1 - Size 100 1440 LP		General Tolerances ED-204		PROVE	
Further technical data PRO 392 200 0		Range of Nominal Dimensions (±)		DOUBLE-DIAPHRAGM ACTUATOR	
Doc. Code	Sheet 1 To 6	Class D	± *	CAM 30/30-2.5"	
File	2010-11-28	0.5	1.0	PRO 392 200 0	
Medium	2010-11-28	1.0	2.0	005 EN 1/1	
Course		2.0	3.0		
Tapped holes acc.		3.0	5.0		
D Tolerance Class Applied Cross-hatched		5.0	6.5		
Rev	Scale	Material No.		Year of first issue	
30	1:1	PRO 392 200 0		EN	
Size	CD System	179837		5420 AM	
A 1	CRO				