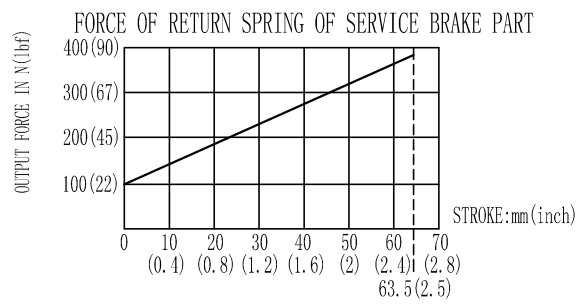
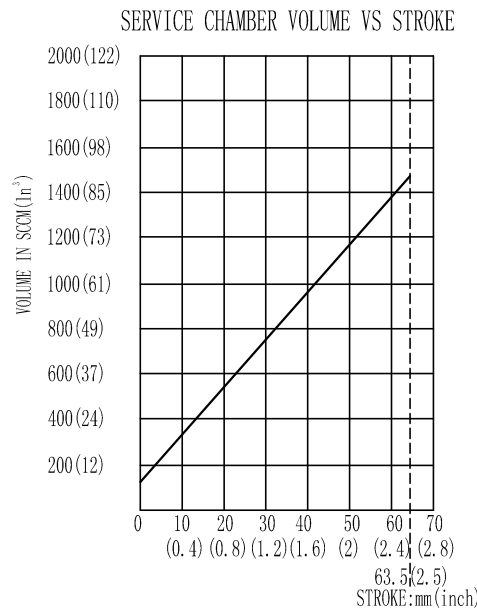
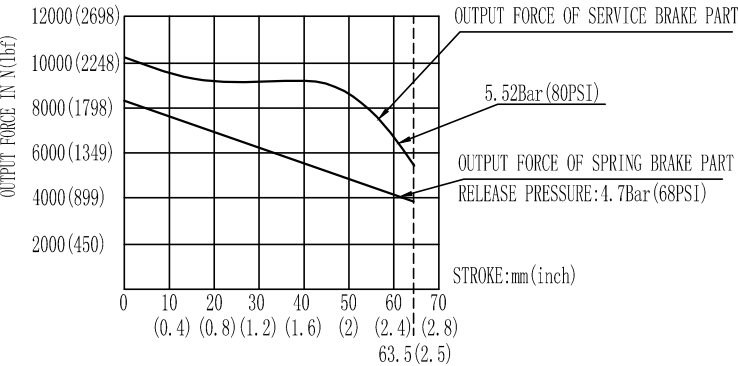
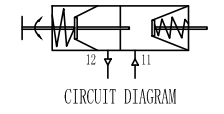
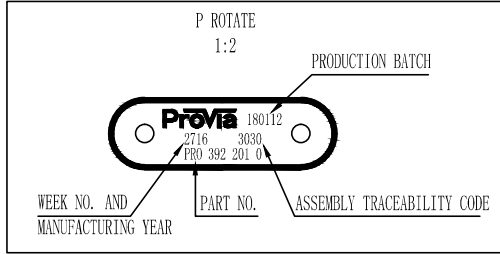


SURFACE PROTECTION	
I	ELECTRO-PAINTING
II	ZINC PLATED WITH CR6+ FREE
III	SURFACE OXIDIZATION
IV	HARD POLYETHYLENE
V	STICKER



GRAPHS FOR INFORMATION ONLY

- ① OPEN BREATHER HOLE, DEFLECTION ANGLE $\pm 30^\circ$.
 - ② TORQUE: 45 ± 5 N.m; THREAD PLUG IS INSTALLED.
 - ③ DEFLECTION: MAX 6° AT 0mm STROKE.
 - ④ TORQUE: 80 ± 10 N.m.
 - ⑤ TORQUE: MAX 25 N.m.
 - ⑥ CONDITION AS SUPPLIED: SPRING RELEASED.
 - ⑦ SIZE WHEN SPRING COMPRESSED.
 - ⑧ PARTIAL DEFLECTION ANGLE ALLOWED.
 - ⑨ TORQUE: 220 ± 20 N.m.
 - ⑩ TORQUE: ≥ 25 N.m.
 - ⑪ DURING DELIVERY CONDITION YOKE IS ASSEMBLY IN ANY OF THE MOUNTING BOLT.
 - ⑫ THIS PART HAS TO BE ASSEMBLY BY CUSTOMER WITH STAND-OUT ⑬ AND TORQUE ④ AS MENTIONED IN MAIN VIEW.
 - ⑬ STAND-OUT DIMENSION AFTER ASSEMBLY YOKE.
- TECHNICAL REQUIREMENT:
- STROKE - PARKING CHAMBER: ≥ 63.5 mm (2.5"); SERVICE CHAMBER: ≥ 63.5 mm (2.5");
 - WORKING PRESSURE: APPLIED PRESSURE 8Bar (116PSI); MAX. WORKING PRESSURE: 10Bar (145PSI);
 - WORKING TEMPERATURE: -40°C - $+80^\circ\text{C}$ (-40°F - $+176^\circ\text{F}$);
 - THE DRAWING IS AT CAGED CONDITION, THE PARKING CHAMBER WILL BE AT UNCAGED CONDITION DURING SHIPMENT;



General Specification ED-204-1, Size 100 1440 LP		Doc. Code		General Tolerances ED-201		Range of Nominal Dimensions (± μm)		Class D		Tapped Holes acc.		D Tolerance Class Applied Cross-hatched	
Further Technical Data PRO 392 201 0	Doc. Code	2010-1-20	2010-1-20	± 0.05	± 0.10	± 0.15	± 0.20	± 0.05	± 0.10	± 0.15	± 0.20	± 0.05	± 0.10
DOUBLE-DIAPHRAGM ACTUATOR		CAM 30/30-2.5"		005		EN		1/1		178837		5420_MH	

This document is a technical drawing of a mechanical part. It is intended for use as a reference for manufacturing and assembly. It is not to be used for design or engineering purposes. The drawing is the property of Provia and is confidential. It is not to be reproduced or distributed without the written consent of Provia.