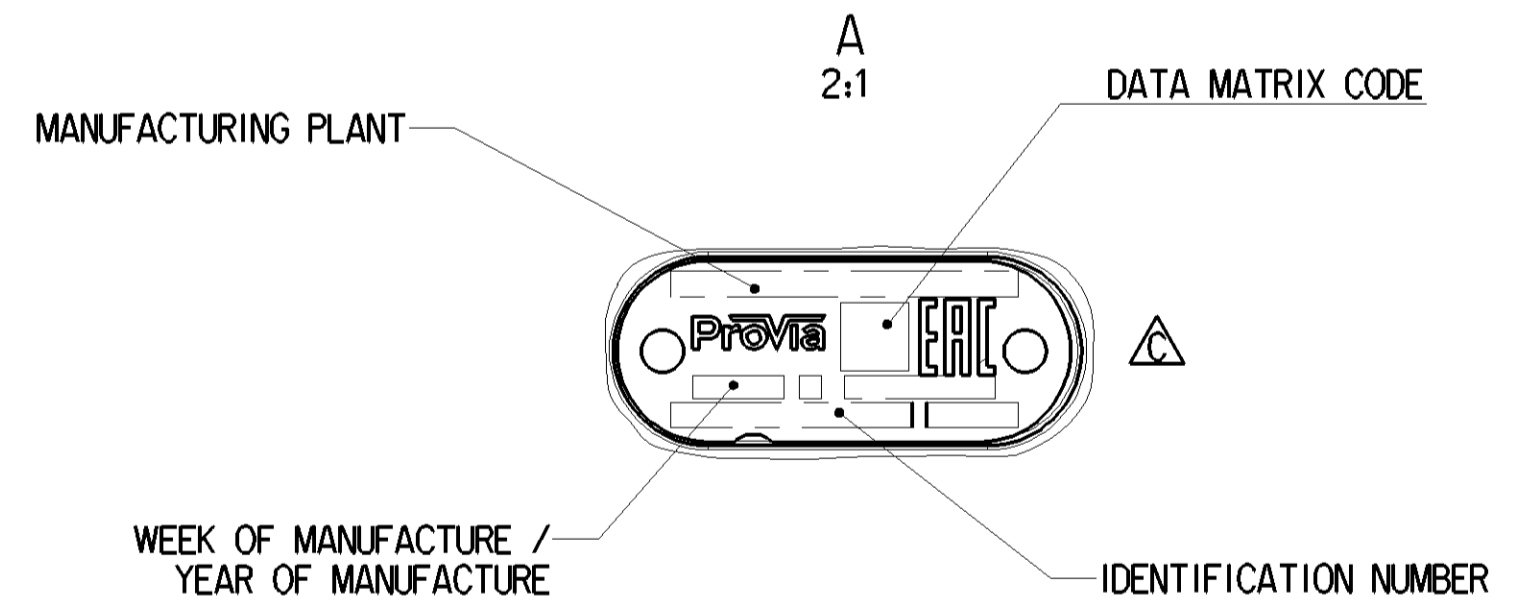
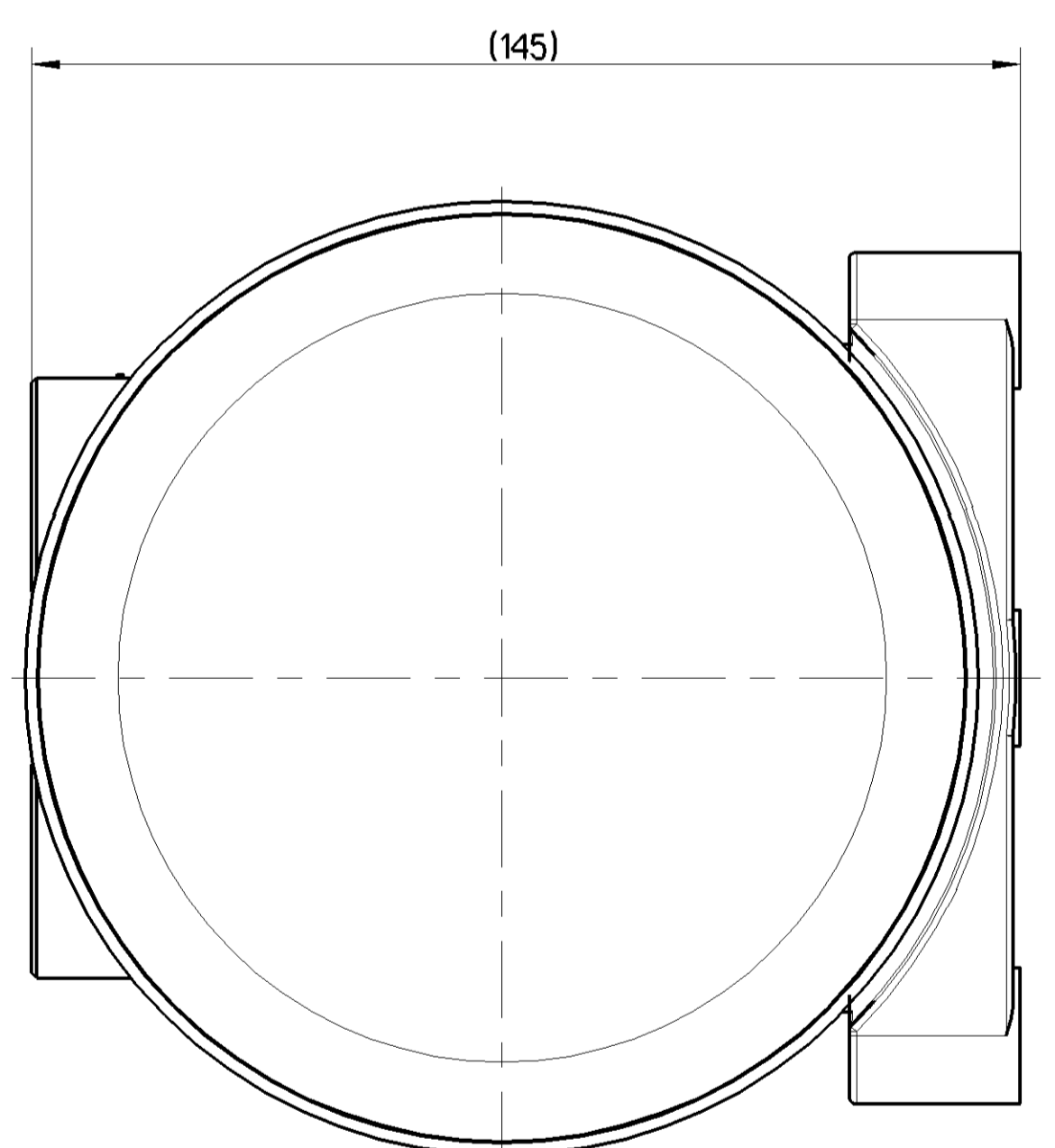
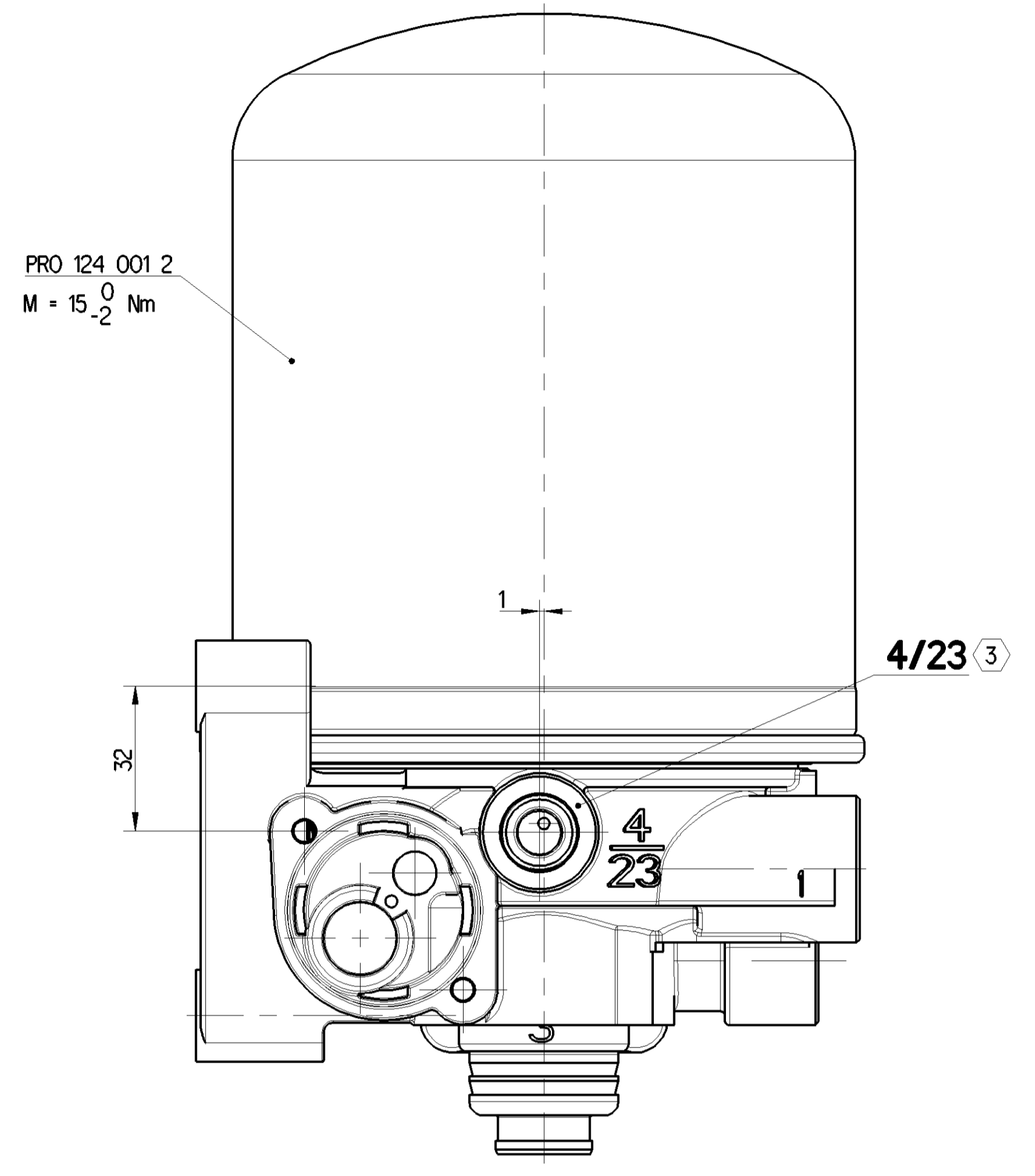
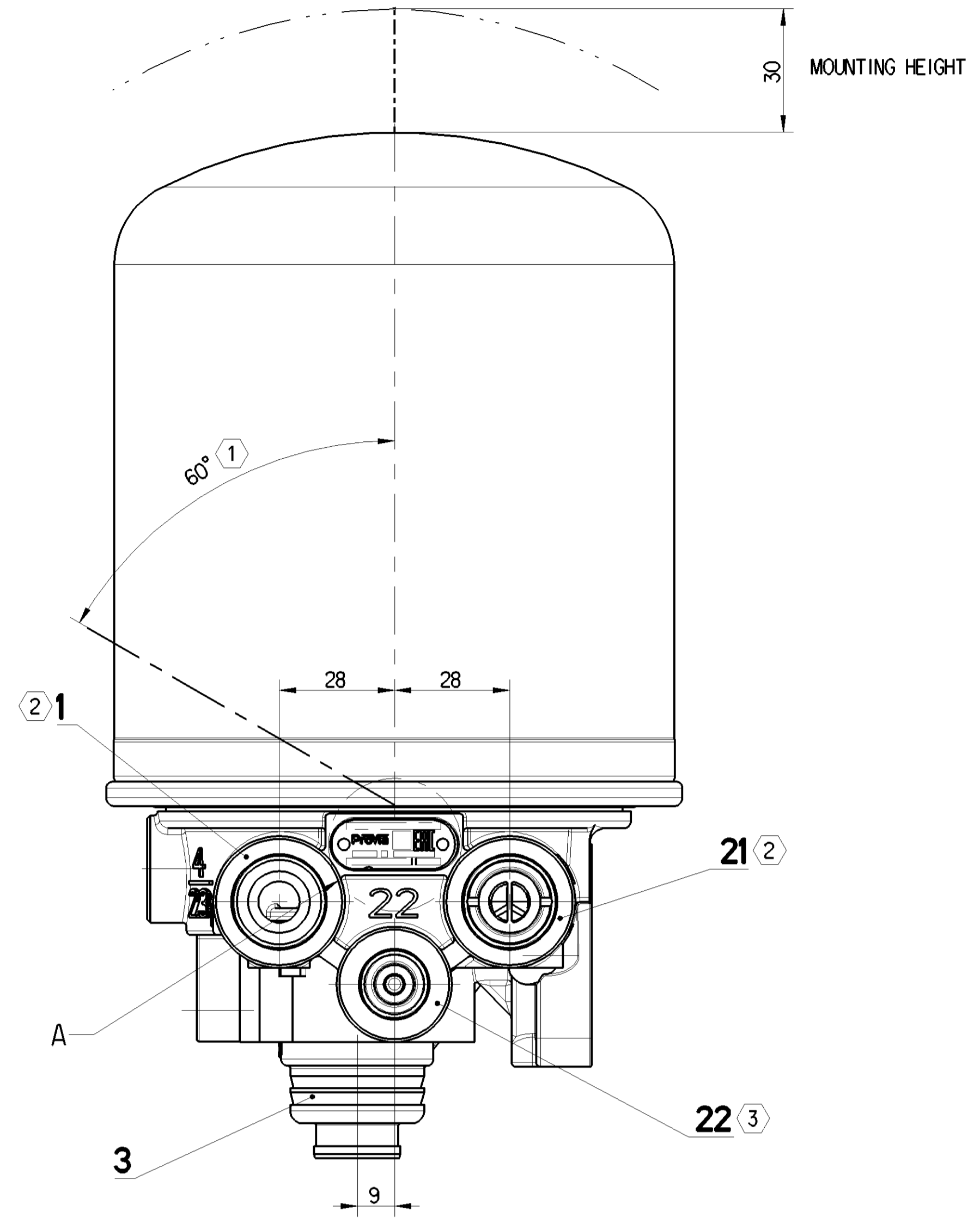
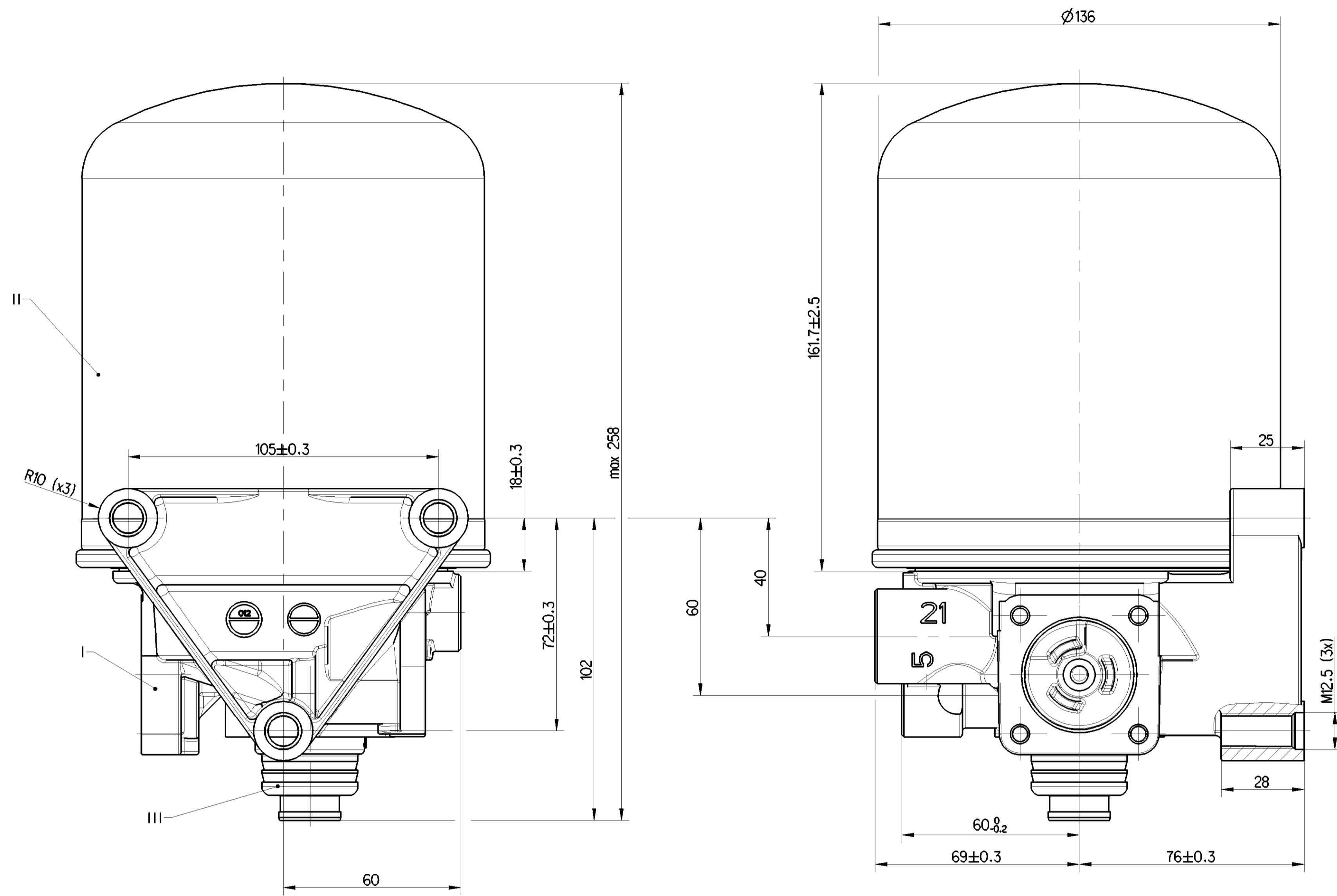


EXTERNAL SURFACE	
I	JED-259-3
II	JED-471-O
III	PLASTIC



PORT	FUNCTION	THREAD
1	FROM THE COMPRESSOR	M22x1.5 JED-388
21	TO THE RESERVOIRS	M22x1.5 JED-388-4
22	TO THE RESERVOIRS FOR REGENERATED AIR	M16x1.5 JED-388
4/23	CONTROL PORT / TO THE COMPRESSOR	M16x1.5 JED-388
3	EXHAUST FOR COMPRESSED AIR	-

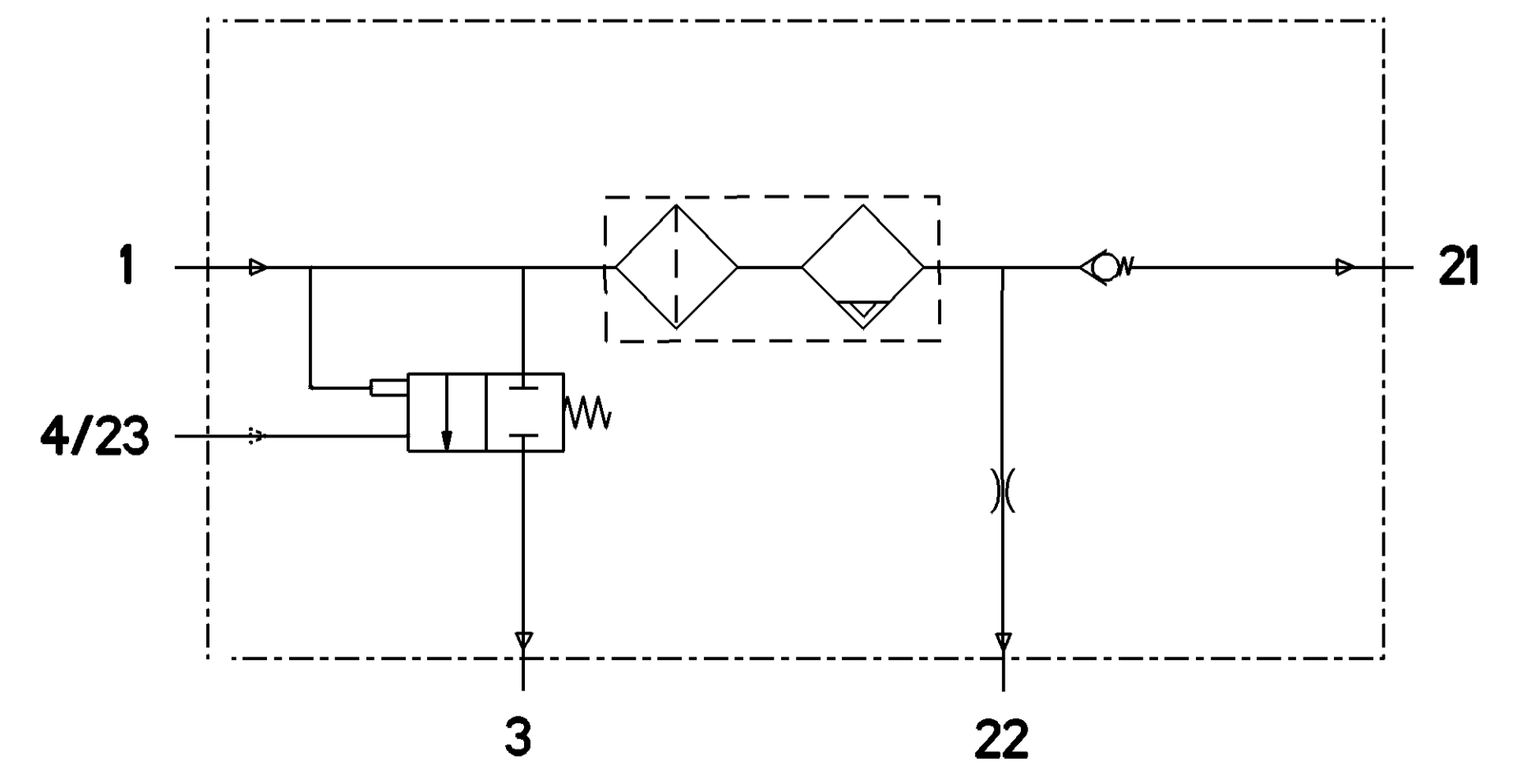
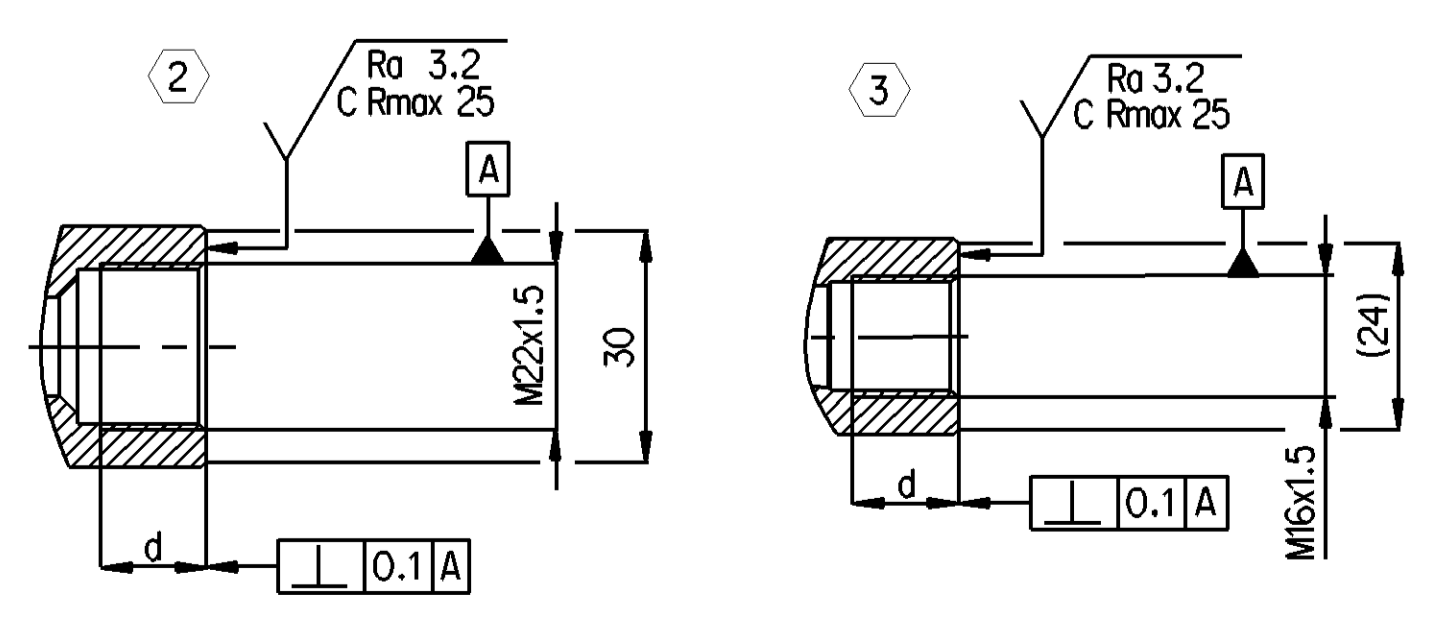
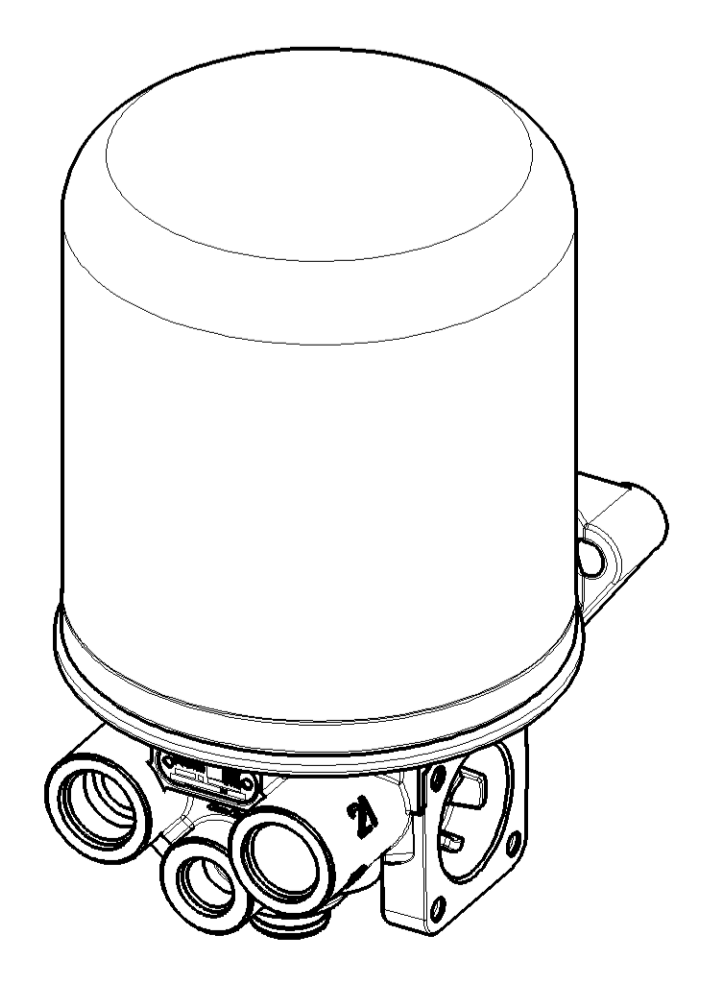
TECHNICAL DATA

MEDIUM: COMPRESSED AIR
 WORKING PRESSURE: P_e MAX=13 bar
 MAX. PREMISSIBLE FREQUENCY: 50 Hz
 MAX. PREMISSIBLE ACCELERATION: ±10x g

COMBINED UNLOADER

OUT OUT PRESSURE: ≤13.0 bar
 TORQUES FOR CONNECTIONS:
 M16x1.5: Mmax = 34 Nm
 M22x1.5: Mmax = 53 Nm

1 INSTALLATION POSITION AS DRAWN



General Specification: ISO 8768, JED-354-1, Size 121 14415 LP		Copyright 2022		Prövia	
Further Technical Data: PRO 122 008 0		Date: 2022-07-05		AIR DRYER	
Doc. Code: 035		Sheet: 1 To 4		Version: 1.1	
General Tolerances: ISO 2818		2022-07-05		Muzum	
Range of Nominal Dimensions (d in mm)		2022-07-05		Pawlowski	
Class	h1	± 50	± 80	± 400	± 400
File	X	+0.03	+0.09	+0.15	+0.2
Medium	X	+0.1	+0.2	+0.3	+0.4
Course	X	+0.2	+0.35	+0.5	+0.65
Tapped holes acc.:		A 0		C 1	
Tapped holes acc.:		A 0		C 1	
Tapped holes acc.:		A 0		C 1	

This document is the property of Prövia. It is intended for use only for the specific product and application. Any reproduction, distribution, or use of this document without the written consent of Prövia is strictly prohibited. Prövia reserves the right to modify the technical specifications and dimensions of its products without notice. The user is responsible for ensuring that the correct version of this document is used.