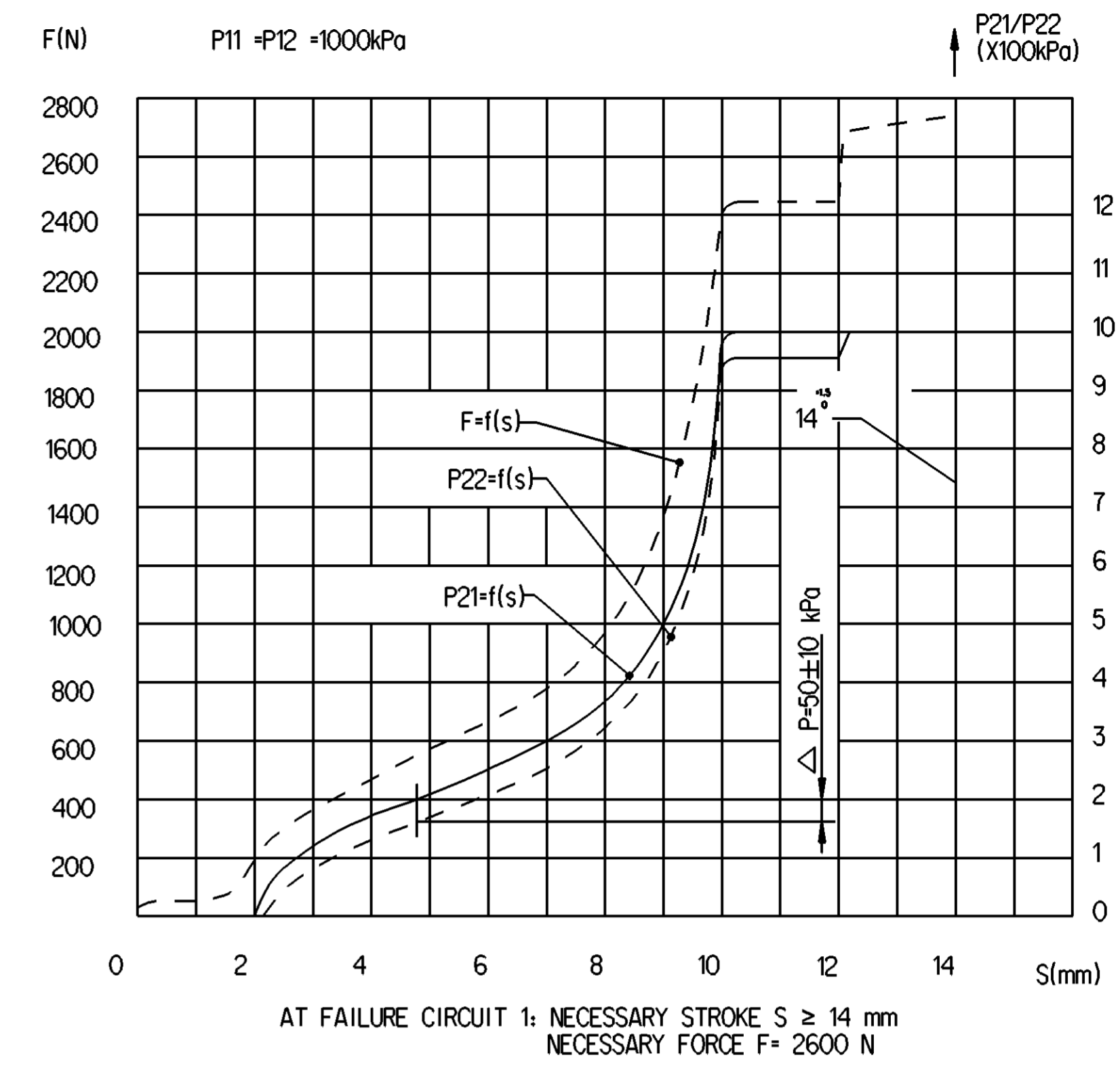
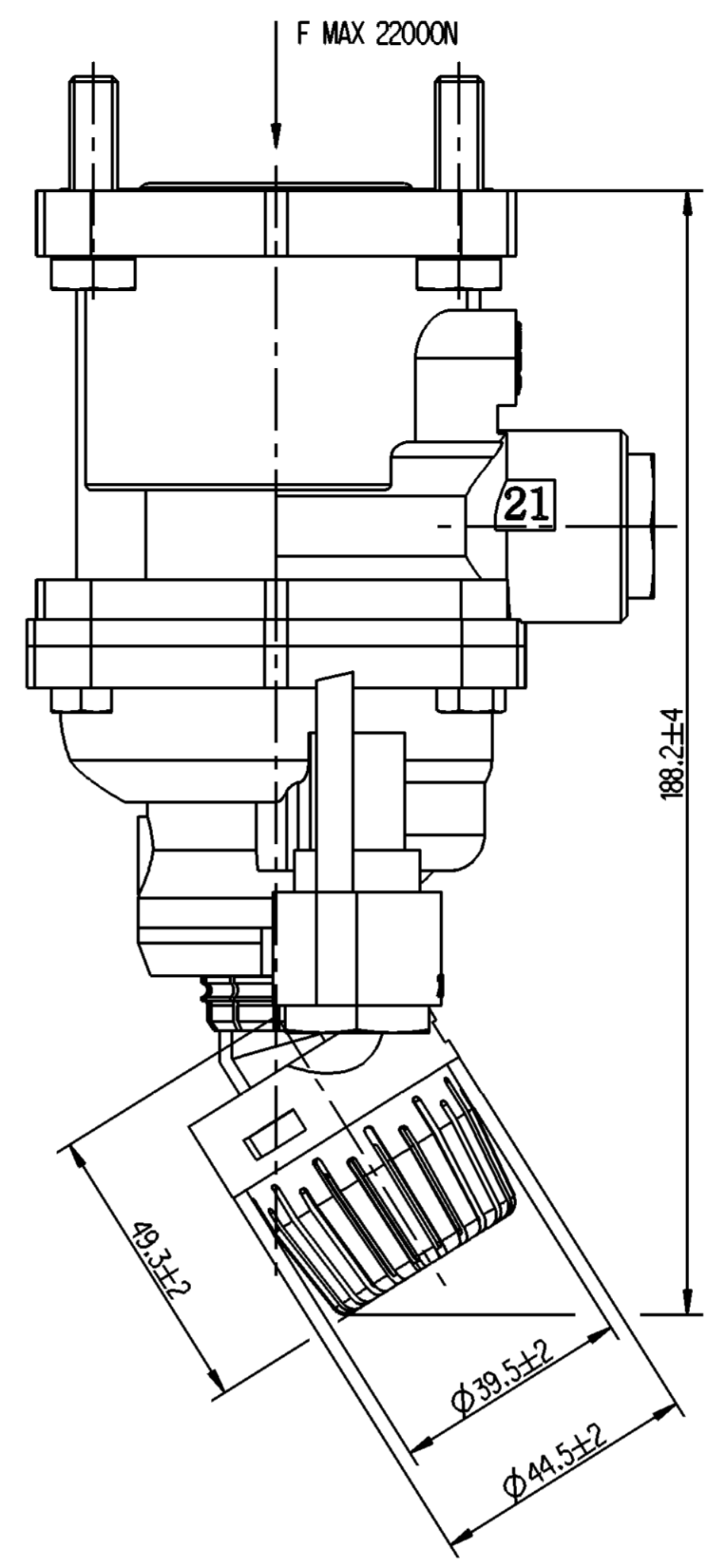
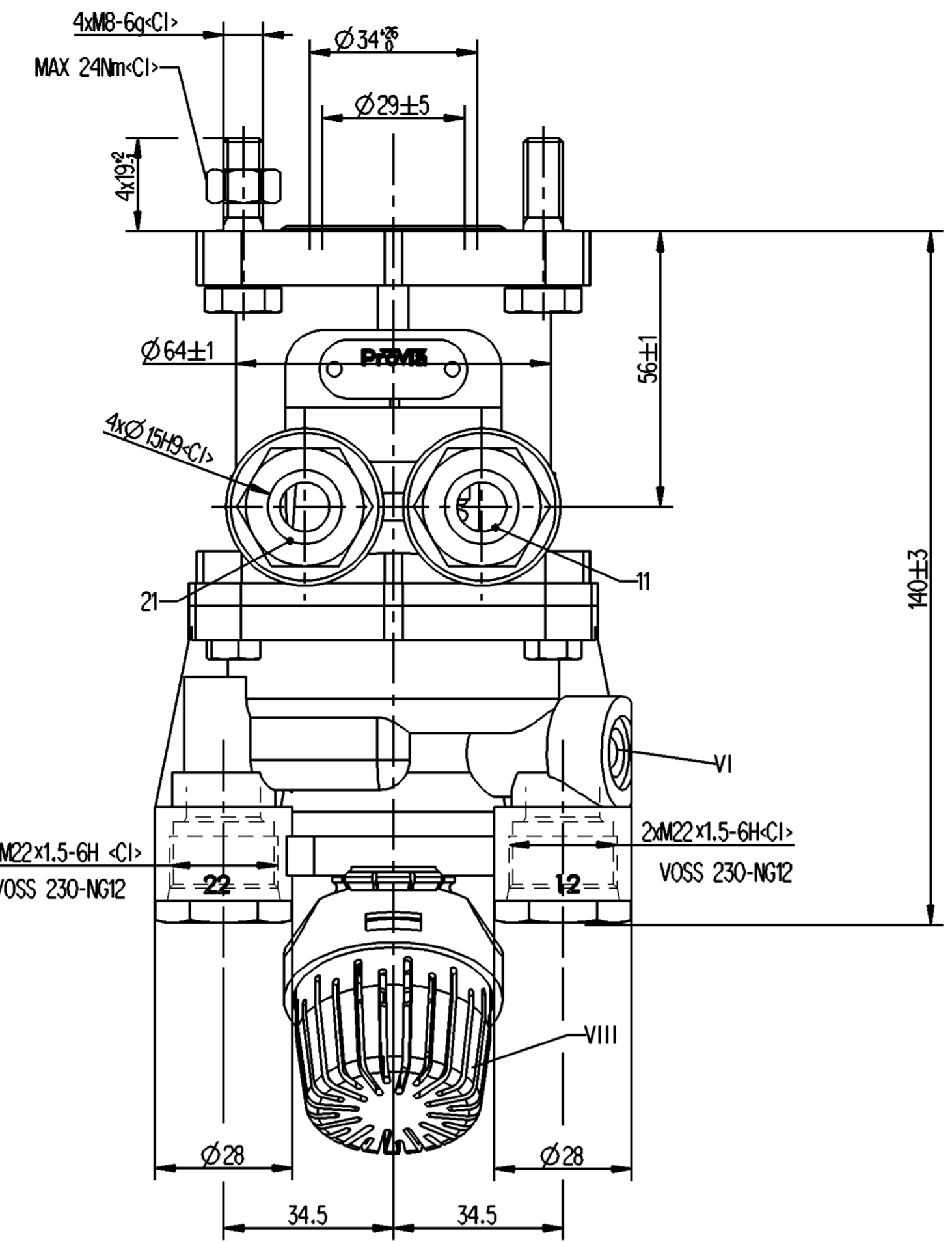
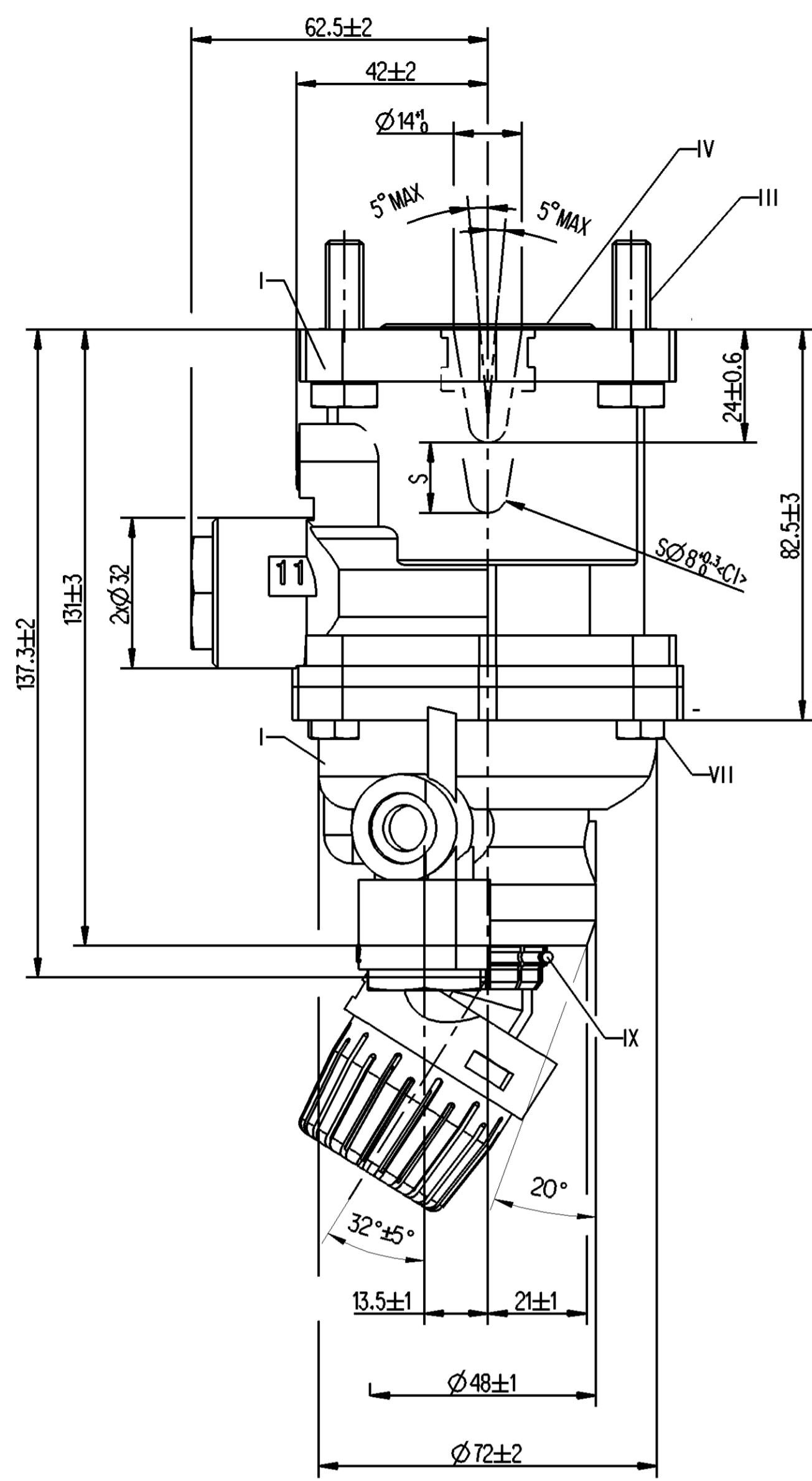


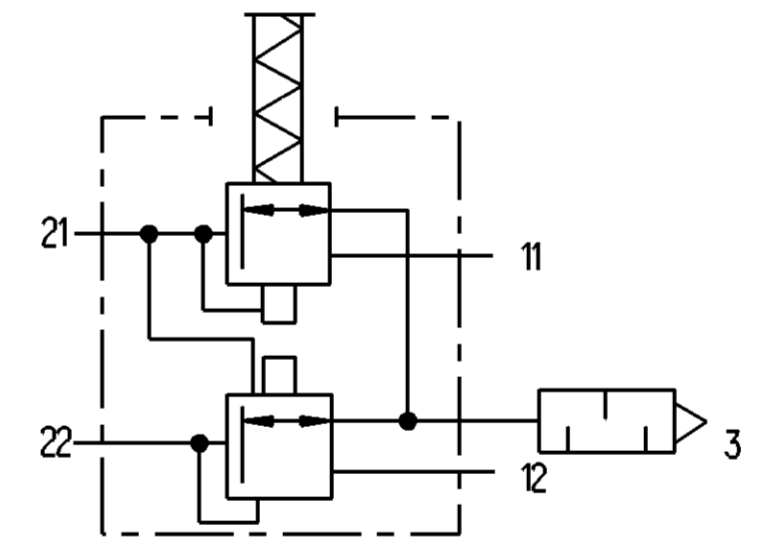
<I> SAFETY CHARACTERISTICS	0
<II> SIGNIFICANT CHARACTERISTICS	0
<CI> CUSTOMER INTERFACE	6



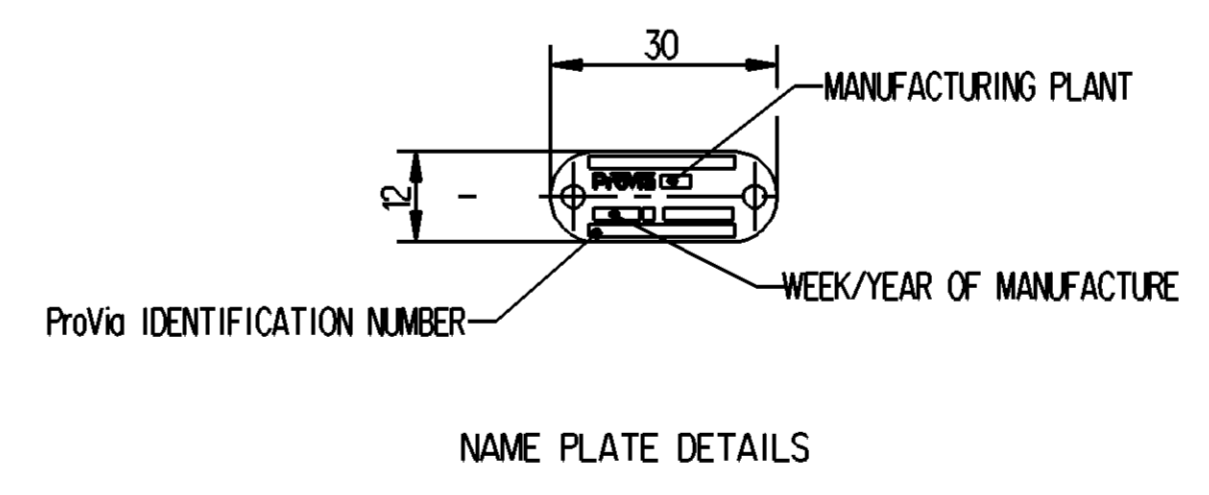
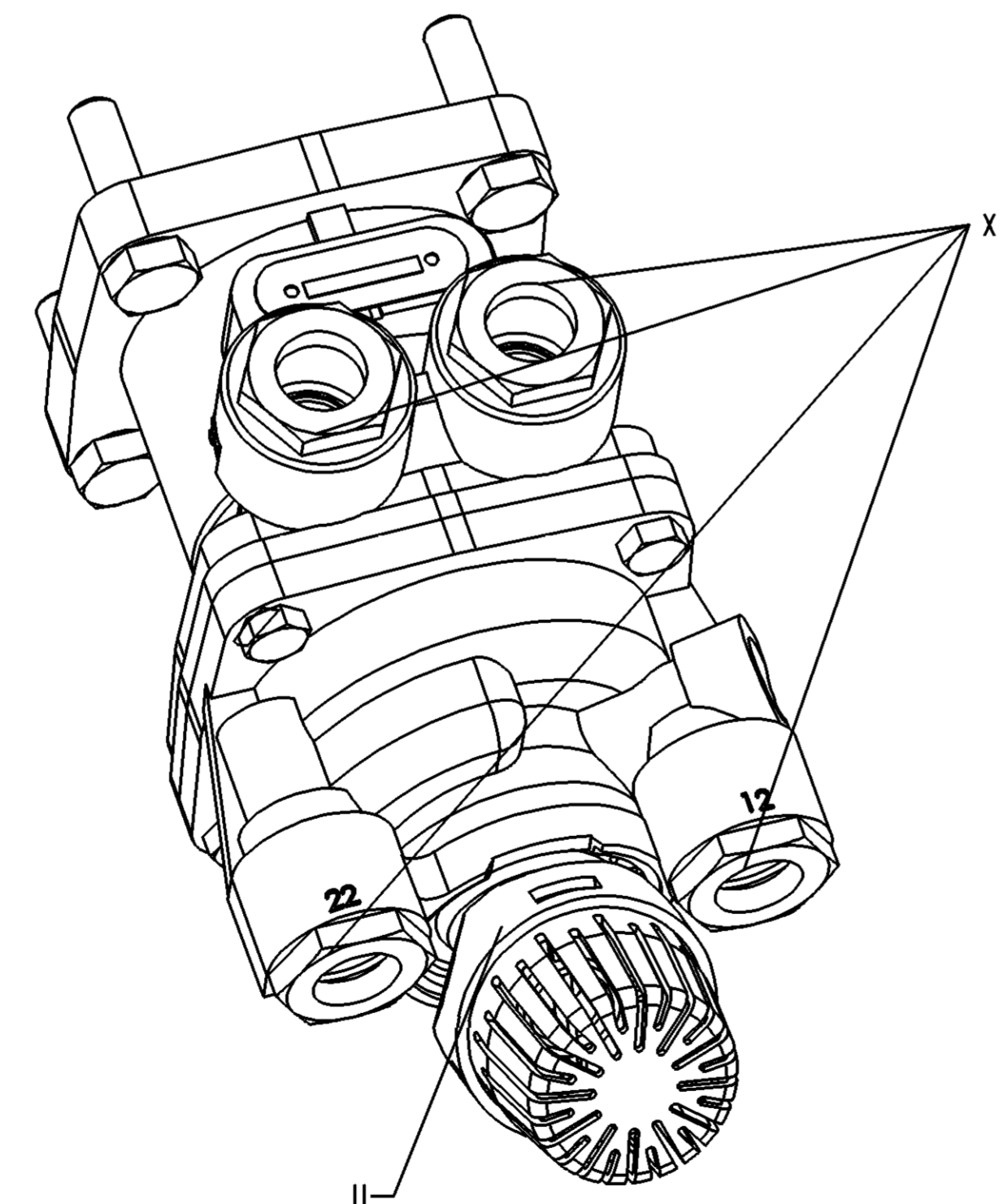
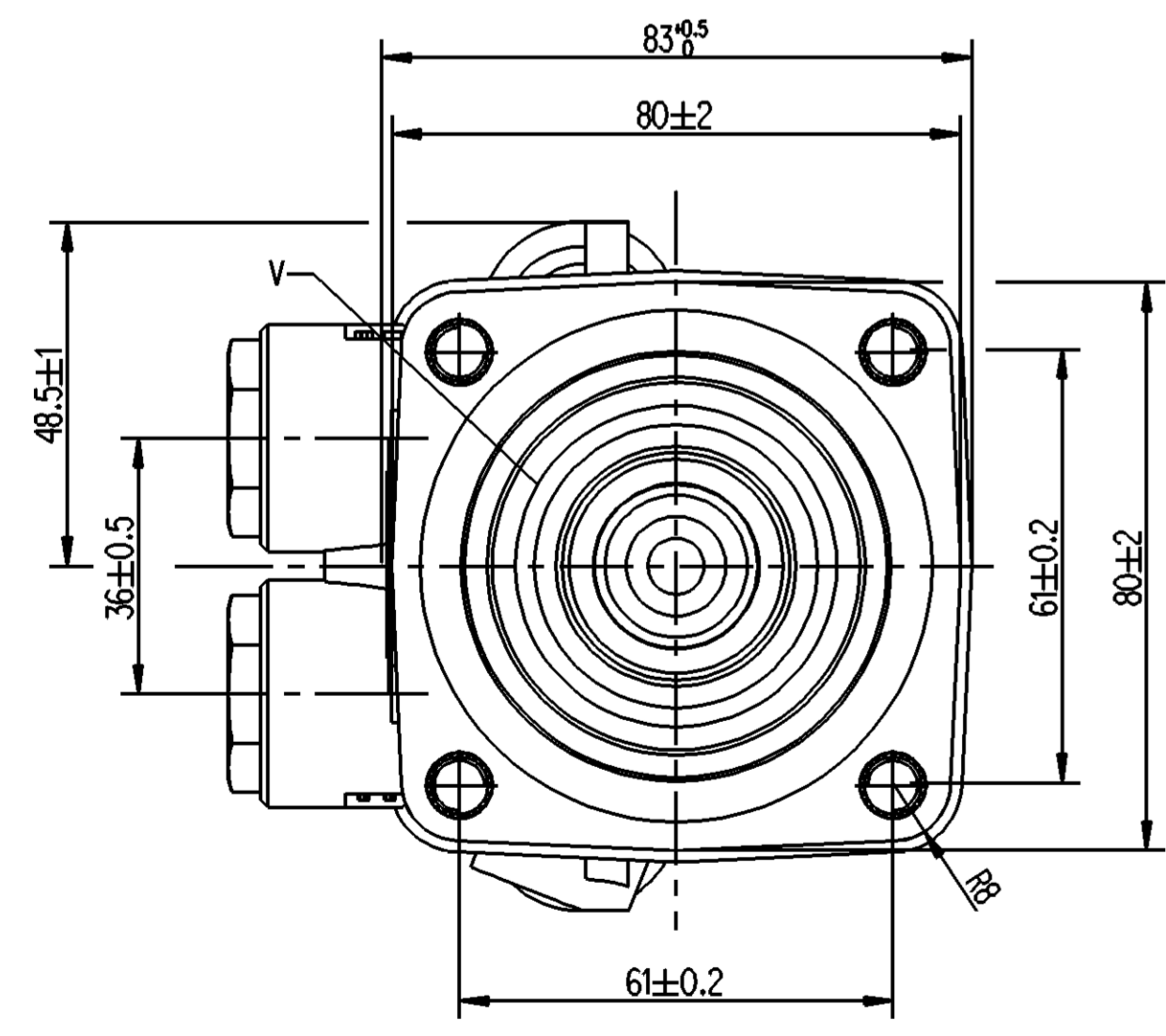
MATERIAL AND SURFACE PROTECTION

S.No.	MATERIAL	SURFACE PROTECTION
I	ALUMINIUM ALLOY	CHROMA TED
II	PLASTIC	NO TREATMENT
III	STEEL	ZINC PLATED
IV	RUBBER	NO TREATMENT
V	PLASTIC	NO TREATMENT
VI	STAINLESS STEEL	
VII	STEEL	ZINC PLATED
VIII	PLASTIC	NO TREATMENT
IX	STEEL	ZINC PLATED
X	CUZN	

SCHEMATIC DIAGRAM



11/12 SUPPLY
21/22 OUTLET
3 EXHAUST



TECHNICAL DATA

S.No.	NOTES	
1	PRODUCT FUNCTION AND RELIABILITY	
2	WORKING MEDIUM	AIR
3	NORMAL WORKING PRESSURE	10.2 bar
4	MAXIMUM WORKING PRESSURE	13 bar
5	NOMINAL DIAMETER (78.5 mm sq)	Ø10 mm
6	THERMAL RANGE OF APPLICATION	-40°C TO +80°C
7	NOISE LEVEL	≤72 dBA

Non è permesso copiare o riprodurre questo documento, né utilizzare il contenuto in modo commerciale (art. 1772).
 Toute réimpression ou utilisation non autorisée sans la permission écrite de la ProVia est formellement interdite.
 Toute réimpression ou utilisation non autorisée sans la permission écrite de la ProVia est formellement interdite.
 All rights reserved. No part of this document may be reproduced or transmitted in any form or by any means electronic or mechanical, including photocopying and recording, or by any information storage or retrieval system, without the prior written permission of ProVia.
 Copyright © 2022 ProVia. All rights reserved.

General Specifications: ISO 8015, JED-334-1, Size ISO 14405 LP
 Further Technical Data: PRO 315 010 0
 Doc. Code: 035 Sheet: 1 To: 8

Copyright WABCO®
 Date: 2022-07-27
 Signature: *Saravanan*
 2022-07-27
 Checked: *Manivannan*
 2022-08-03

ProVia
FOOT BRAKE VALVE

Material No.: PRO 315 016 0
 Date of first issue: 2022-08-03
 Doc. Code: 005 EN 1/1

Mass: 1.15 kg
 Scale: 1:1
 Size: CAD System

Dimensions in mm

Class 1) ±0.5 ±1 ±1.5 ±2 ±3 ±4 ±6.5
 Fine ±0.5 ±1 ±1.5 ±2 ±3 ±4 ±6.5
 Medium X ±1 ±2 ±3 ±4 ±6.5
 Coarse ±2 ±3.5 ±5 ±6.5

Tapped Holes acc.
 1) Tolerance Class Applied Crossmarked

Author: CREO
 ECH-№: 5180_AM
 Revision: 1
 Tech. Resp.: 5180_AM