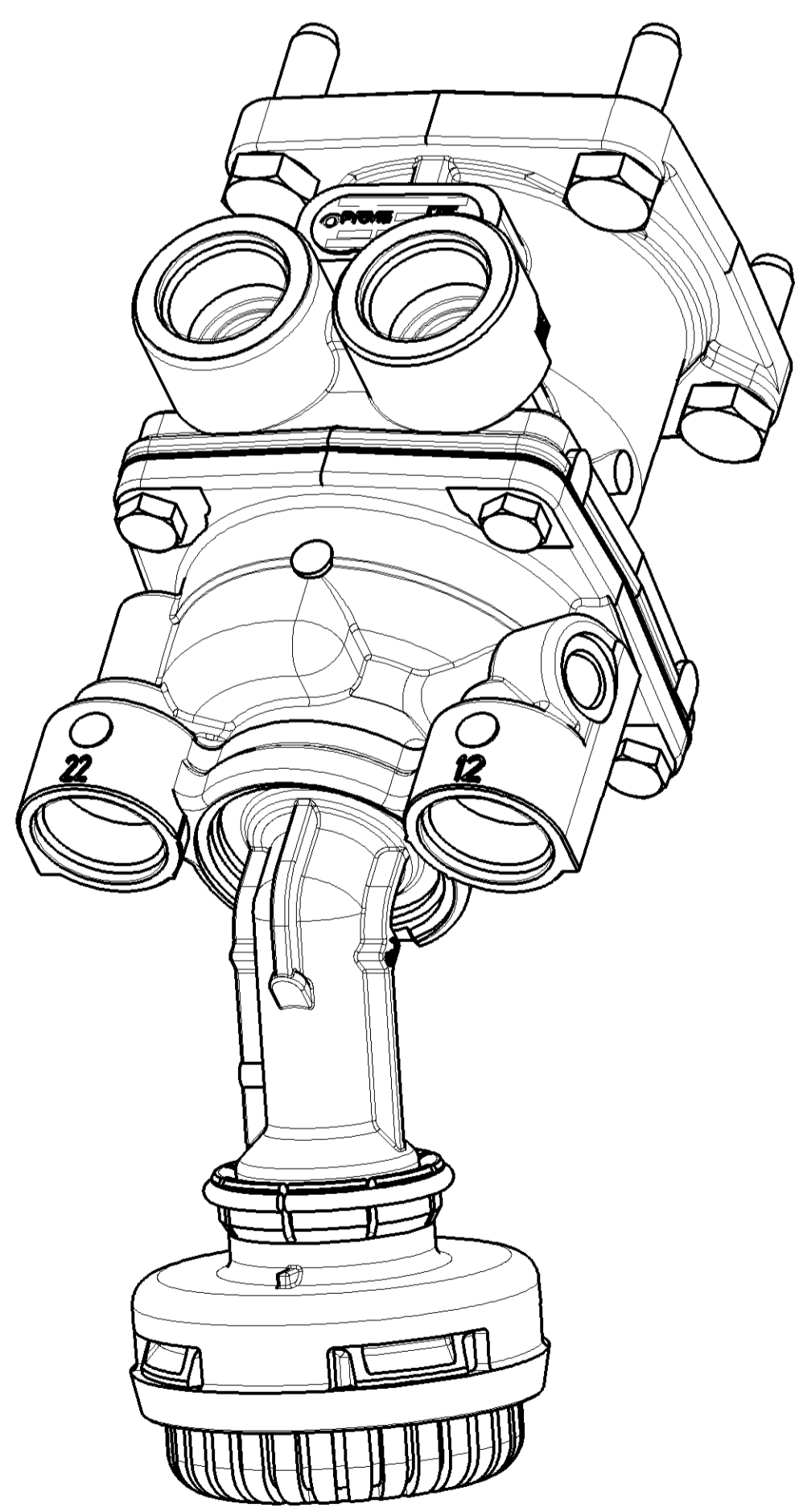
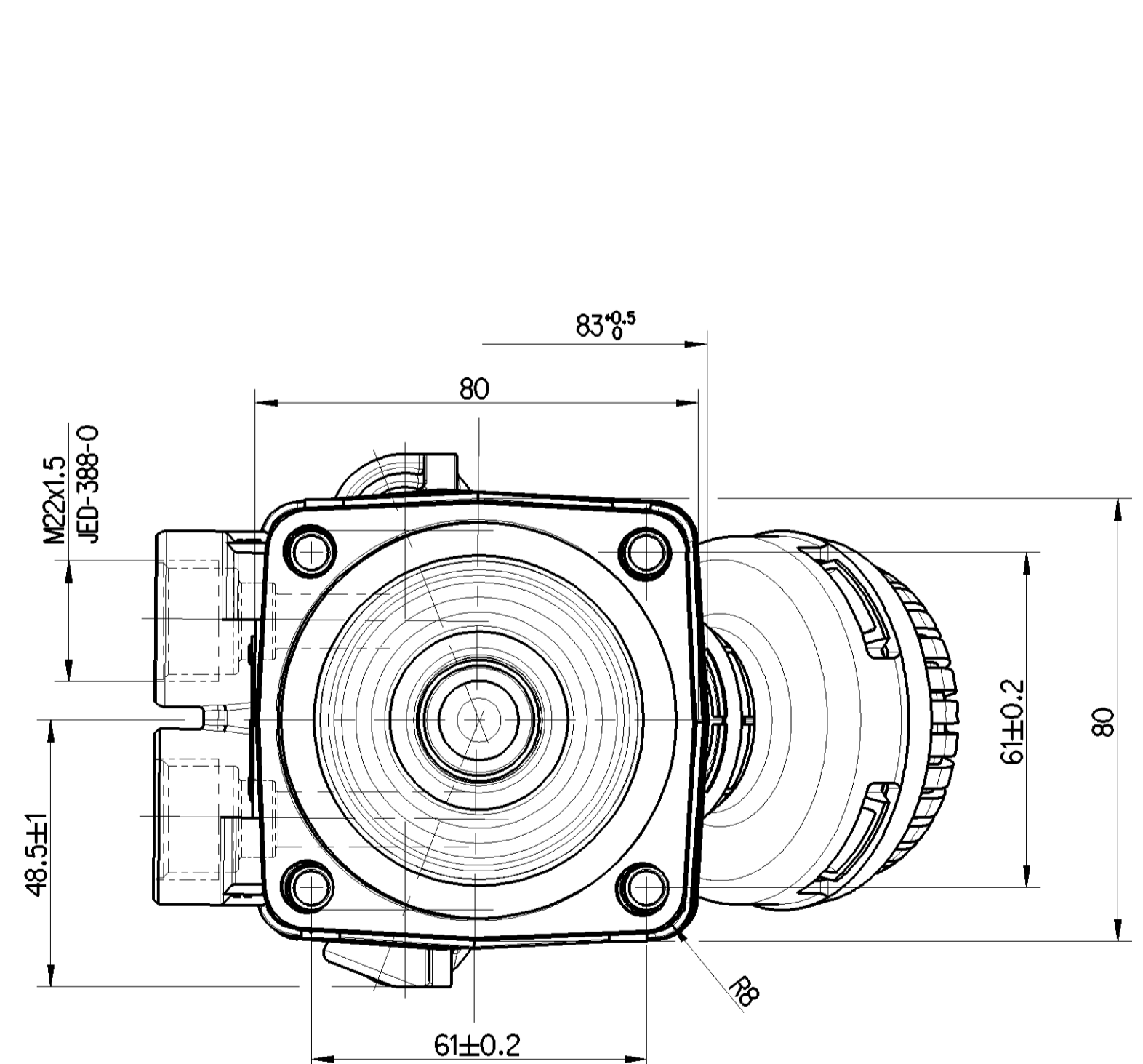
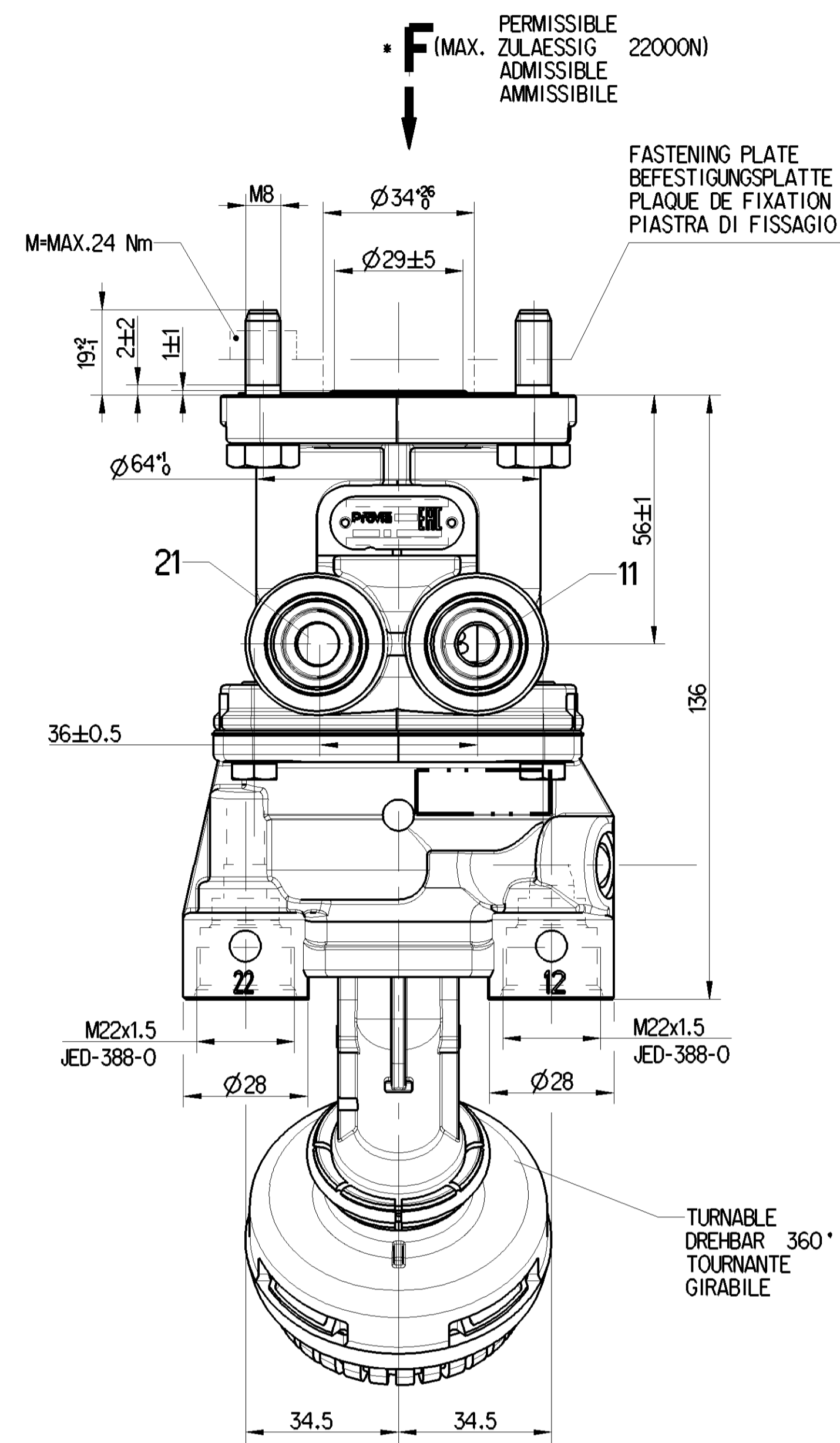
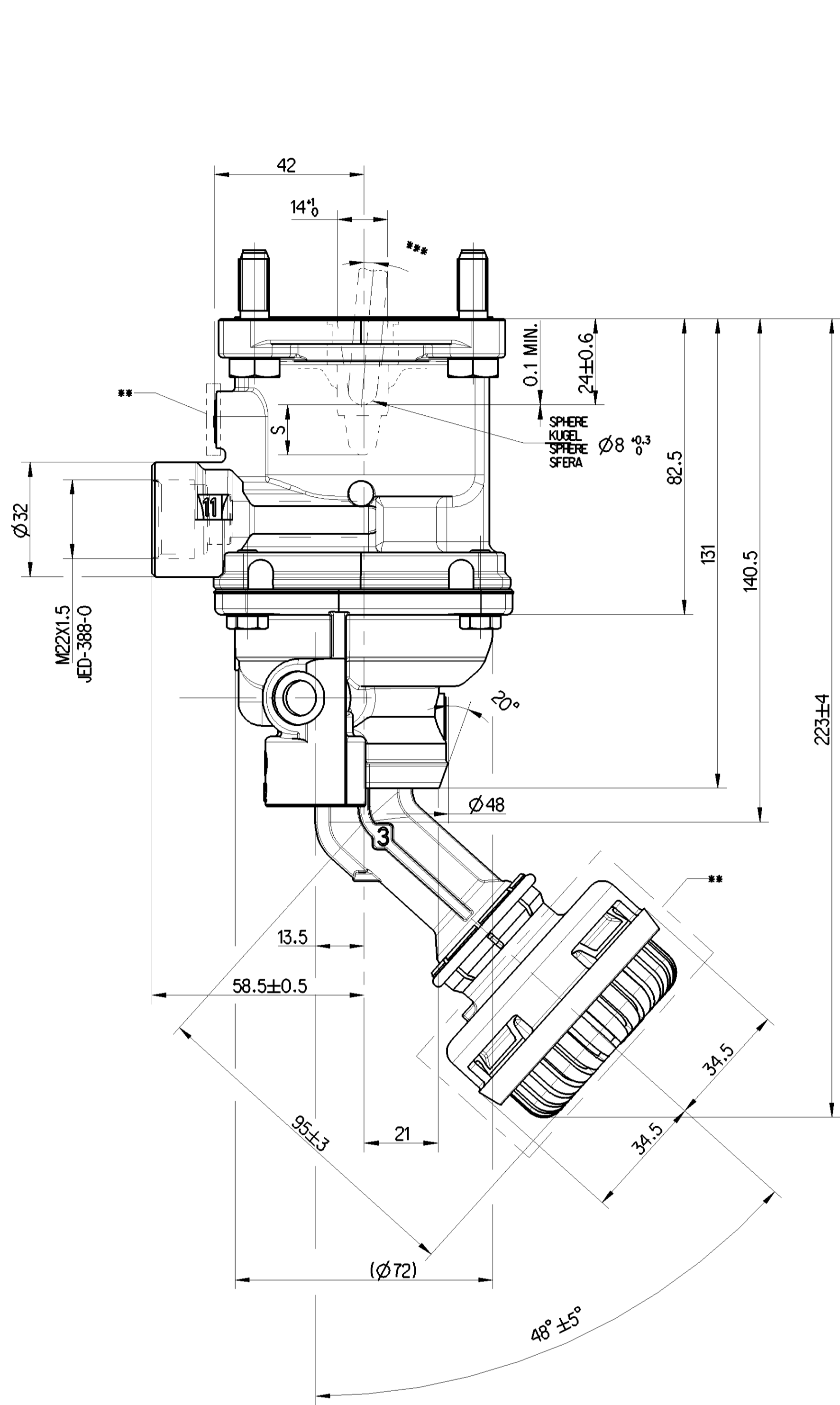
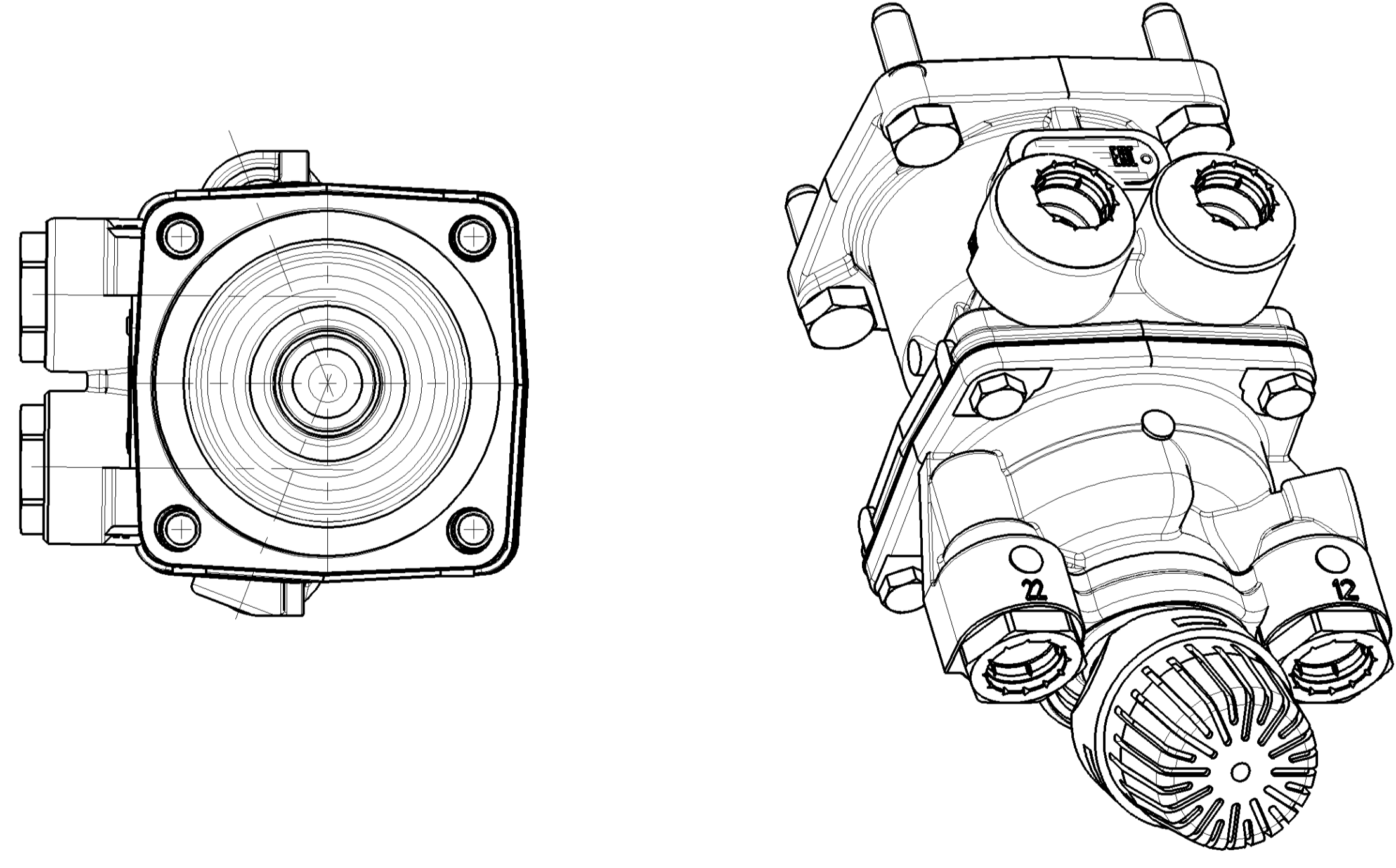
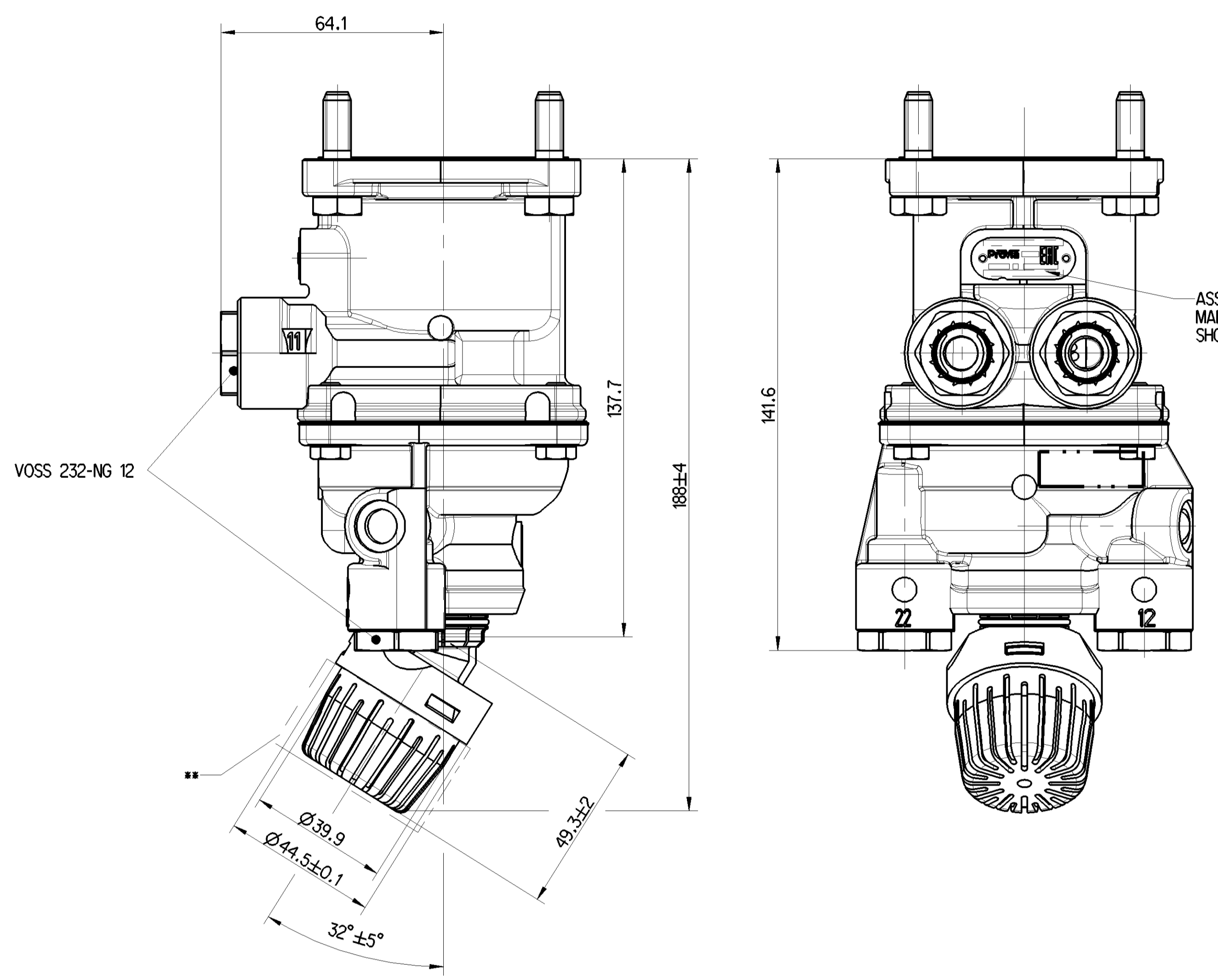


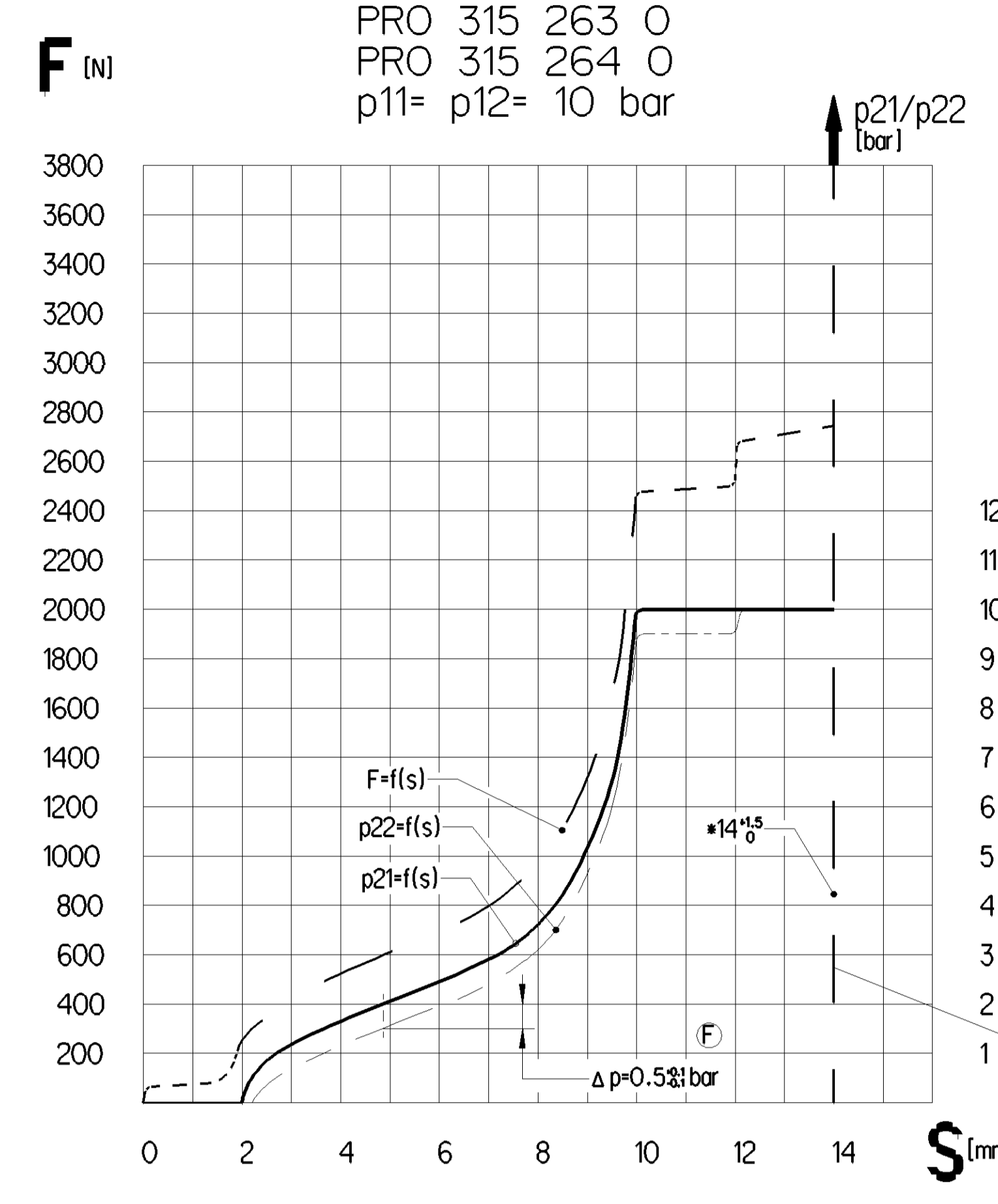
PRO 315 263 0



PRO 315 264 0



ASSEMBLY PART NUMBERS & MANUFACTURE DATE TO BE SHOWN HERE (B)



AT FAILURE CIRCUIT 1: NECESSARY COURSE $S \geq 14$ mm
 NECESSARY FORCE $F = 2600$ N
 BEI AUSFALL KREIS 1: ERFORDERLICHE WEG $S \geq 14$ mm
 ERFORDERLICHE KRAFT $F = 2600$ N
 EN CAS DE DEFAILLANCE: COURSE NECESSAIRE $S \geq 14$ mm
 FORCE NECESSAIRE $F = 2600$ N
 IN CASO DI DIFETTO: CORSA NECESSARIA $S \geq 14$ mm
 FORZA NECESSARIA $F = 2600$ N

SUPPLY: 1/12
 VORRAT: 2/22
 ALIMENTATION: 2/22
 AUSGANG: 2/22
 SORTIE: 2/22
 USCITA: 2/22
 EXHAUST: 3
 ENTLUEFTUNG: 3
 ECHAPPEMENT: 3
 SCARICO: 3

STOP WITHIN THE DEVICE ADMISSIBLE
 ANSCHLAG IM GERÄT ZULÄSSIG
 BUTÉE DANS L' APPAREIL ADMISSE
 ARRESTO NEL APPARATO AMMISSIBILE

MEDIUM: AIR
 MEDIUM: LUFT
 FLUIDE: AIR
 FLUIDO: ARIA

THERMAL RANGE OF APPLICATION :
 THERMISCHER ANWENDUNGSBEREICH: -40 °C ... +80 °C
 GAMME D'APPLICATION THERMIQUE:
 CAMPO TERMICO D'APPLICAZIONE :

NOMINAL DIAMETER :
 NENNWEITE : 78.5mm \neq Ø10
 DIAMETRE NOMINAL :
 DIAMETRO NOMINALE :

WORKING PRESSURE :
 BETRIEBSDRUCK : $p_e = \text{MAX. } 10.2 \text{ bar}$
 PRESSION D'UTILISATION:
 PRESSIONE DI ESERCIZIO:

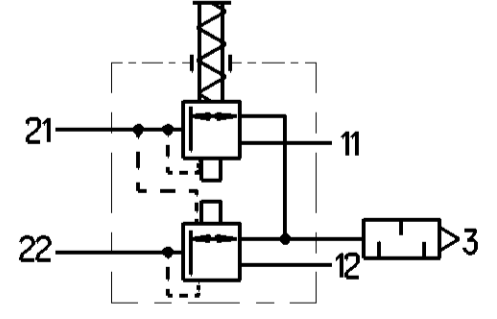
TEMPORARILY:
 KURZZEITIG: $p_e = \text{MAX. } 13 \text{ bar}$
 DE COURTE DUREE:
 BREVE TEMPO SOLO:

INSTALLATION POSITION : EXHAUST SHOWN AT BASE (AXIS CENTRE OF DEVICE DEVIATES MAX.50° FROM VERTICAL)
 EINBAUlage : NACH UNTEN (MITTELACHSE DES GERÄTES MAX 50° VON DER SENKRECHTEN ABWEICHEND)
 POSITION D'INSTALLATION : ECHAPPEMENT VERS LA BASICART DE L'AXE MEDIAN DE L'APPAREIL (PAR RAPPORT A LA VERTICALE;50° MAX)
 POSIZIONE DI MONTAGGIO : SCARICO VERSO IL BASSO (DEVIAZIONE ASSE APPARECCHIO RISPETTO ALLA VERTICALE;MAX.50°)

TORQUE FOR CONNECTIONS:
 ANZUGSMOMENT FÜR EINSCHRAUBSTUTZEN: M22 x1.5; M = MAX. 53Nm
 COUPLE DE SERRAGE DES RACCORDS:
 COPPIA DI SERRAGGIO DEI RACCORDI:

MARKED AREA FREE FROM PAINT: VENTILATION
 MARKIERTER BEREICH FREI VON FARBE; BEATMUNG
 PATIE MARQUEE SANS PEINTURE; VENTILATION
 PARTE SEGNAATA SENZA VERNICE; VENTILAZIONE

ALL ROUND : MAX.5°
 ALLSEITIG : MAX.5°
 SUR TOUS LES COTES : MAX.5°
 SU CIASCUN LATO : MAX.5°



General Specifications: JED-334-1, Size ISO 14400 LP		Copyright: 2018-09-21		Prövia	
Further Technical Data: PRO 315 263 0		Date: 2018-09-21		BRAKE VALVE	
Doc. Code: 035		Sheet: To 5		MOTORWAGEN-BREMSVENTIL	
General Tolerances: JED-261		2018-09-21		ROBINET DE FREINAGE	
Range of Nominal Dimensions (± mm)		2018-09-21		DISTRIBUTORE DI COMANDO	
Class	1	2	3	4	5
Max.	± 0.1	± 0.15	± 0.2	± 0.3	± 0.4
Min.	± 0.1	± 0.15	± 0.2	± 0.3	± 0.4
Course	± 0.1	± 0.15	± 0.2	± 0.3	± 0.4
Tapped Holes acc.					
1) Tolerances class Applied: Unspecified					
A 0		1:1		PRO 315 263 0	
030		17205		006 ML 1/1	