

DRAFT FOR TEXT AREAS EXPLANATION ONLY. DRAFT CAN BE DIFFERENT TO THE REAL PART.

IDENTIFICATION	DESIGNATION	KIND OF MARKING	COLOUR	SIZE OF TYPES RESP. STANDARD	REMARKS
e	PROVIA - LOGO	TAMPON / UV-BRANDING	WHITE	SIZE 6	
f	PROVIA - SET NUMBER	TAMPON / UV-BRANDING	WHITE		
g	PROVIA - SALES REFERENCE, US-CODE (WHEN EXIST)	TAMPON / UV-BRANDING	WHITE		
h	NUMBER OF WVA	TAMPON / UV-BRANDING	WHITE	HEIGHT OF CHARACTERS 5±1MM HEIGHT OF CHARACTERS AND POSITION OF THE MARKING MAY BE ACC. TO THE SHAPE OF THE BACKING PLATE	
j	NUMBER OF ECE	TAMPON / UV-BRANDING	WHITE		
k	COUNTRY OF ORIGIN	TAMPON / UV-BRANDING	WHITE		
l	BATCH NUMBER	TAMPON / UV-BRANDING	WHITE		
m	ENVIRONMENTAL MARKING ACC. TO SAE J866 JUL2012 OR LATEST	TAMPON / UV-BRANDING	WHITE		

FIRMLY ATTACHED BURR AROUND PAD CONTOUR PERMITTED, BUT AT THE FUNCTION AREAS IT MUST NOT PROTRUDE BEYOND BACKING PLATE

POS.	NAME	QUANTITY
1	BRAKE PAD	2
2	BRAKE PAD	2

General Specification: JED-334-1 - Size ISO 14405 LP

Copyright WABCO®

Further Technical Data: Product Specification

Doc. Code: Q14

Sheet: 1 To: 1

General Tolerances JED-261

Range of Nominal Dimensions (± mm)

Class	1)	≤ 50	> 50 &lt; 180	> 180 &lt; 400	> 400
Fine	X	0.5	1.0	1.5	2.0
Medium		1.0	2.0	3.0	4.0
Coarse		2.0	3.5	5.0	6.5

Checked: 2018-07-17

Expert: Marciniewicz

Mass: 6.4 kg

Scale: 1:1

Size: A 1 CREO

Material No.: 340 901 050 2

Date of first issue: 2016-03-26

Doc. Code: 005

Language: EN

Sheet: 1/2

ECN-No.: 176932

Revision: 8 x C

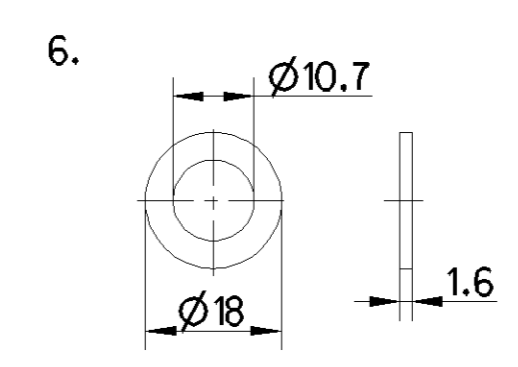
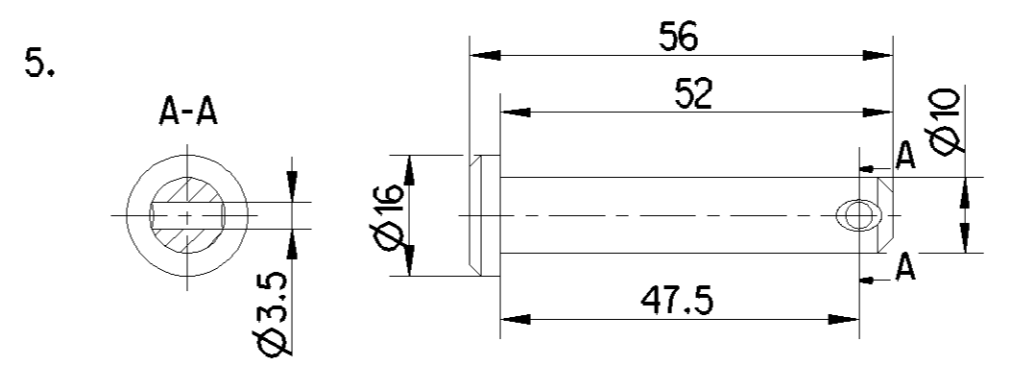
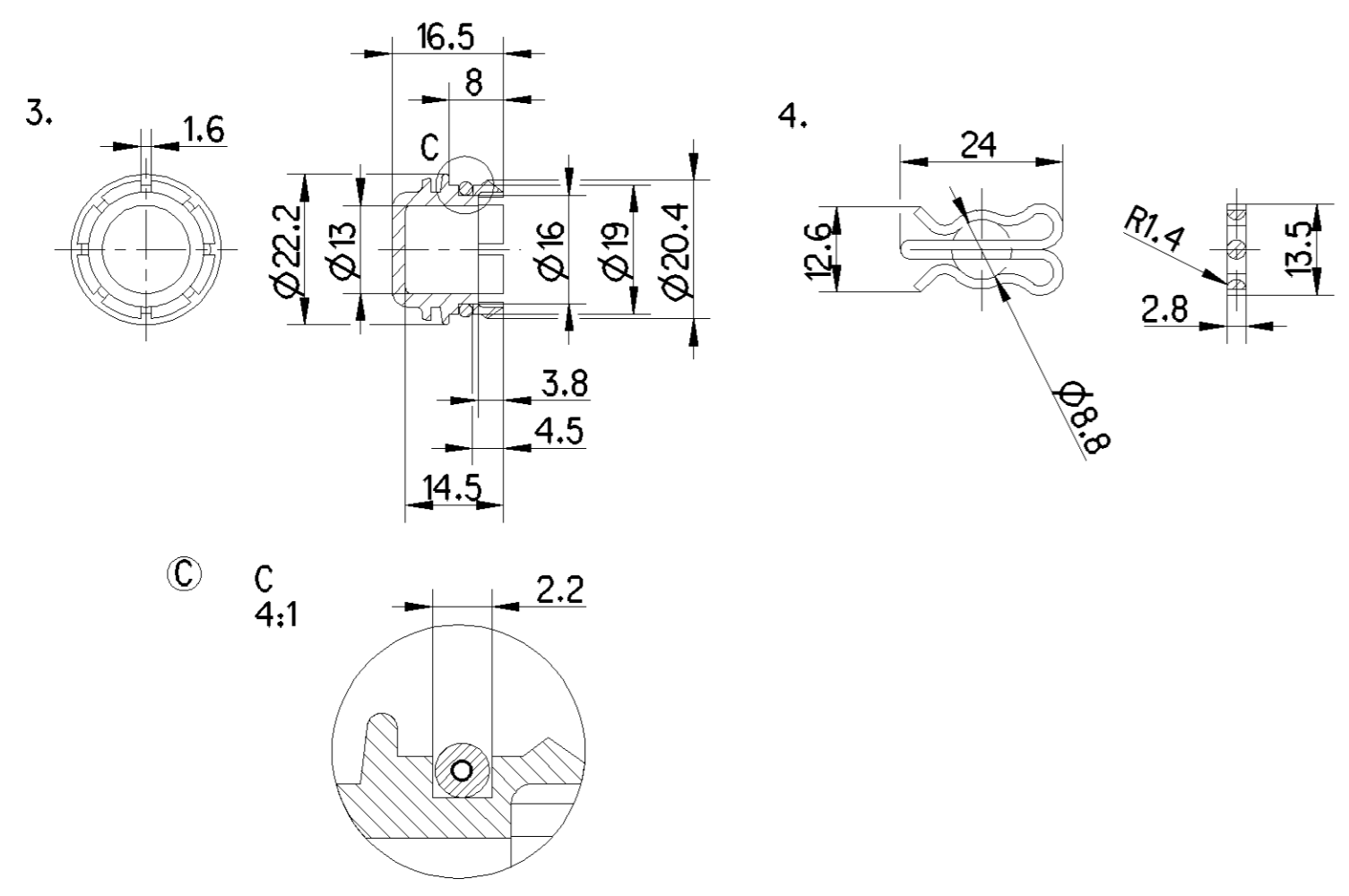
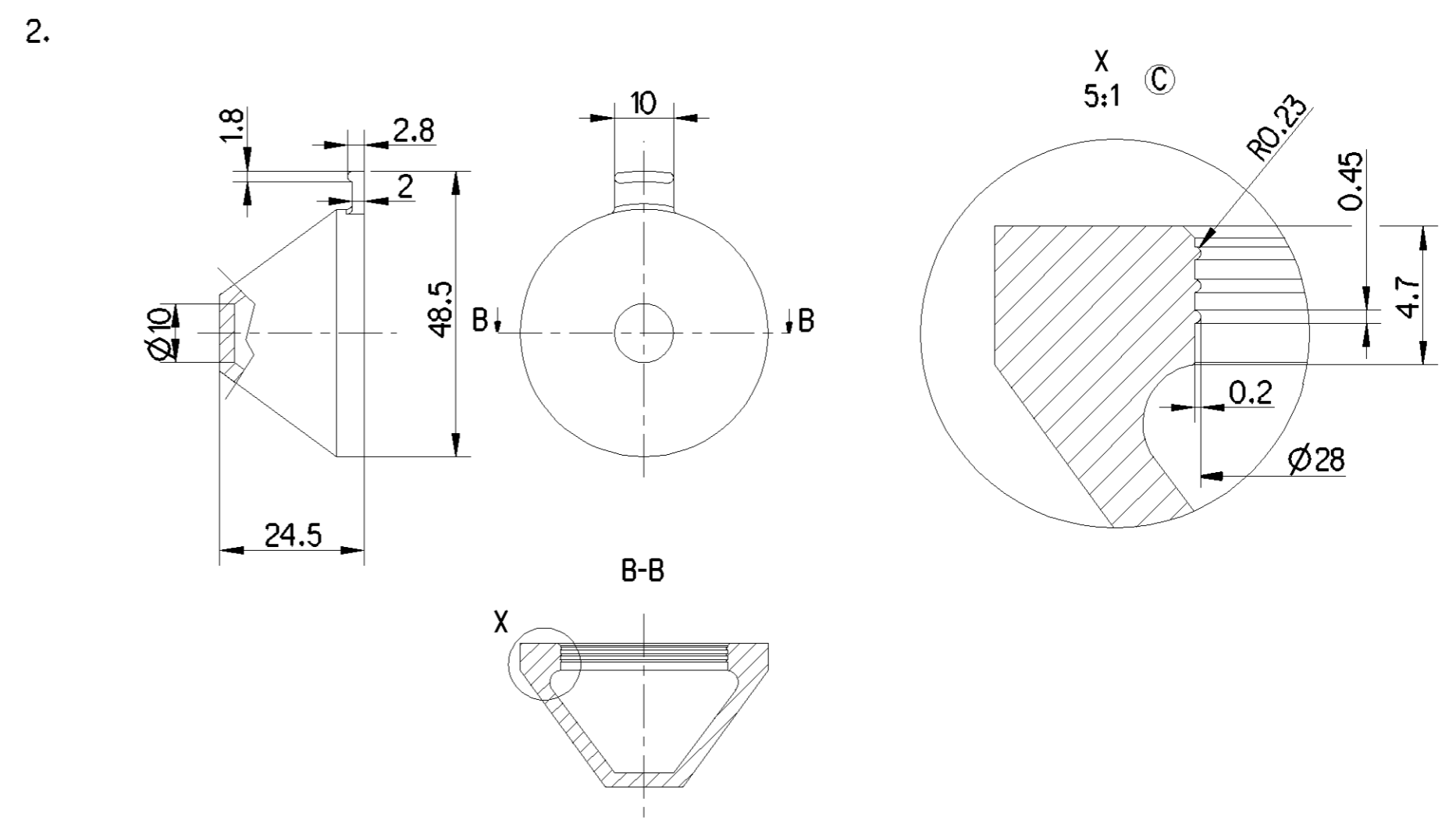
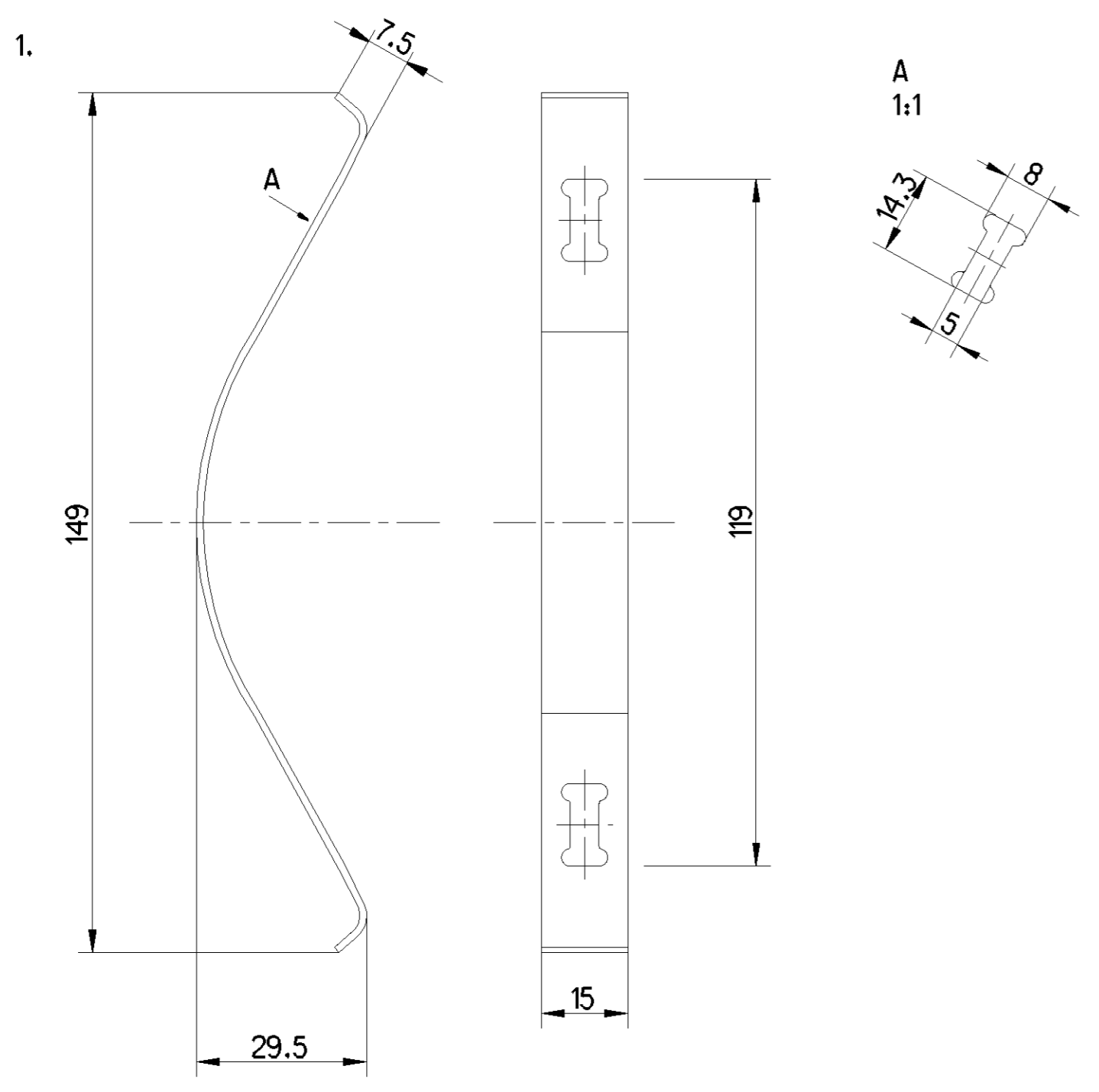
Techn. Resp.: 0959

Replacement for: -

1) Tolerance Class Applied Crossmarked

100mm

Non è permesso copiare o riprodurre questo documento, né utilizzare il contenuto a fini commerciali, senza permesso scritto dalla WABCO. Tutti i diritti sono riservati. Toute réimpression ou utilisation non autorisée sans la permission écrite de la WABCO est formellement interdite. Toute utilisation non autorisée sera considérée comme une violation des droits de propriété intellectuelle. All rights reserved. No part of this document may be reproduced, stored in a retrieval system, or transmitted, in any form or by any means, without the prior written permission of WABCO. Copying of this document and giving it to others and the use or communication of the contents hereof, are forbidden without express, written permission of WABCO. All rights reserved.



POS.	NAME	QUANTITY
1	CLIP	4
2	CAB	2
3	PROTECTING CAP	2
4	LOCKING SPRING	2
5	BOLT	2
6	WASHER	2

General Specification: JED-334-1, Size ISO 14405 LP		Copyright WABCO®		<b>ProVia</b>	
Further Technical Data: Product Specification		Date	Signature	PAD KIT	
Doc. Code: 014	Sheet: To	2018-07-16	Cebulo		
General Tolerances JED-261		Checked			
Range of Nominal Dimensions ( ± mm)		2018-07-17		Marcinkiewicz	
Class	1) ≤ 50 > 50 ≤ 180 > 180 ≤ 400 > 400	Expert			
Fine	0.5 1.0 1.5 2.0	Liszwan			
Medium	1.0 2.0 3.0 4.0	Mass	Scale	Material No.	
Coarse	2.0 3.5 5.0 6.5	0.5 kg	1:1 (4:1, 5:1)	340 901 050 2	
Tapped Holes acc. -		Size	CAD System	Date of first issue: 2015-03-26	
1) Tolerance Class Applied Crossmarked		A 2	CREO	Doc. Code	Language
				005	EN
				Sheet 2/2	
				Replacement for -	
				ECN-No. 176932	
				Revision 8 x C	
				Techn. Resp. 0959	

Non e permesso copiare, o terzi o riprodurre questo documento, ne utilizzare il contenuto o renderlo comunque noto a terzi senza autorizzazione esplicita. Ogni infrazione costituisce un evidente abuso e comportera il risarcimento dei danni subiti. E' fatta riserva di tutti i diritti derivanti da brevetti o modelli.

Copying of this document and giving it to others and the use or communication of the contents thereof, are forbidden without express authority. Contention of this restriction will constitute an evident abuse and result in a liability to the payment of damages. All rights are reserved in the event of the grant of patent or registration of a utility model or design. This document is the subject of copyright.

Toute communication ou reproduction de ce document, toute exploitation ou communication de son contenu sont interdites, sauf autorisation expresse. Tout manquement a cette regle constitue un abus evident et expose son auteur au versement de dommages et interets. Tous droits de proprieite industrielle reserves, notamment en matiere de brevets et de modesles.

Wskazanie swego wykorzystania tego dokumentu, jego kopiowanie i rozpowszechnianie, oraz przekazanie jego zawartosci, jest zabronione bez wyraźnej zgody. Wszelkie naruszenia niniejszych warunków oznaczają ewidentne nadużycie i skutkiem tego będzie odpowiedzialność za szkody.

Alle Rechte hier den Fall der Patentierung oder Gebrauchsmuster-Eintragung vorbehalten.