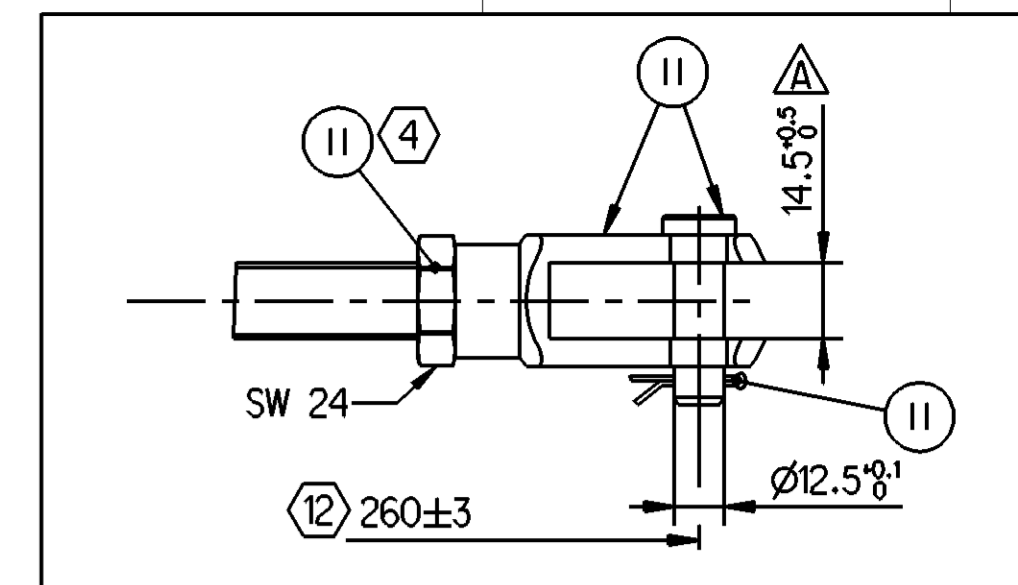
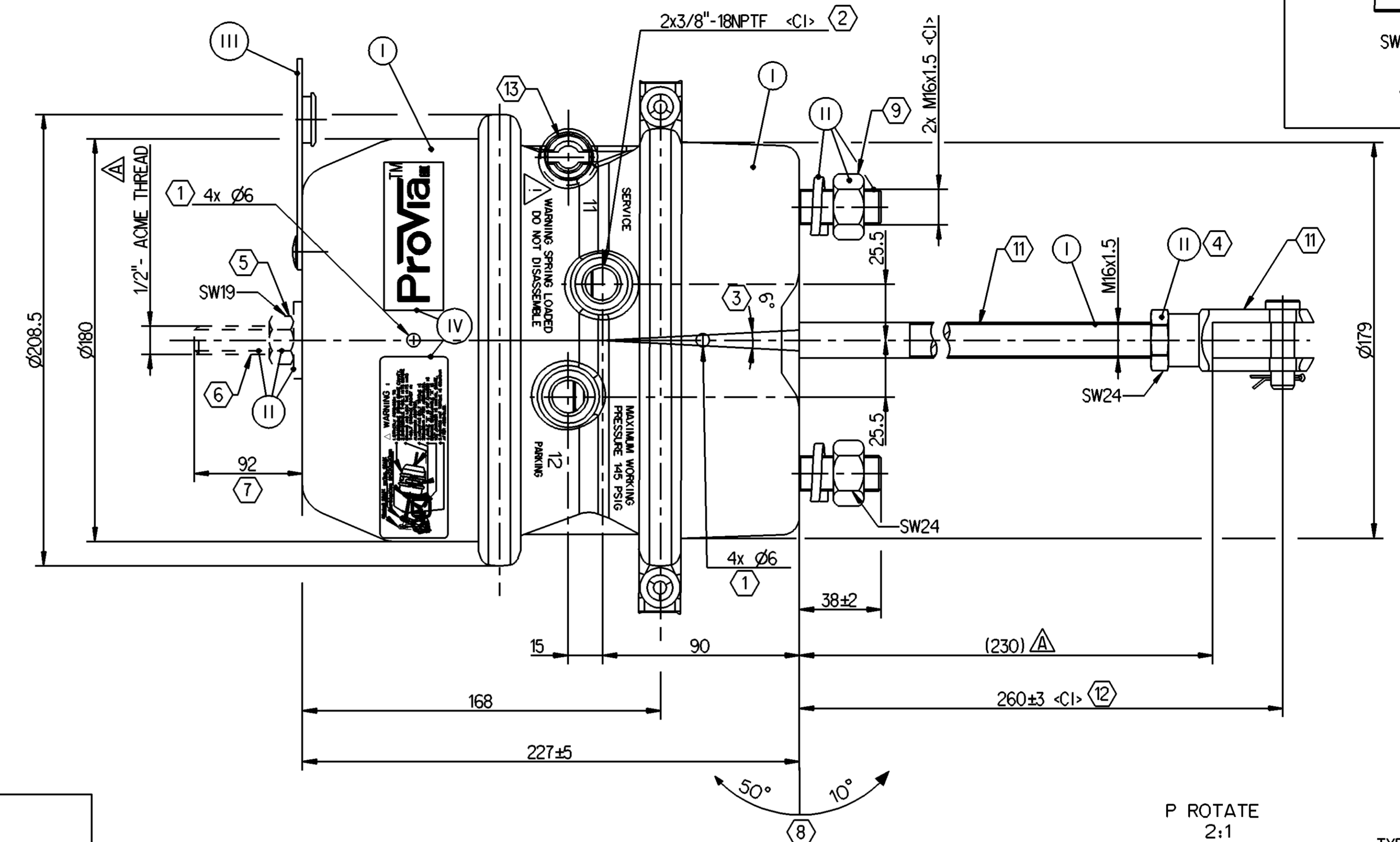
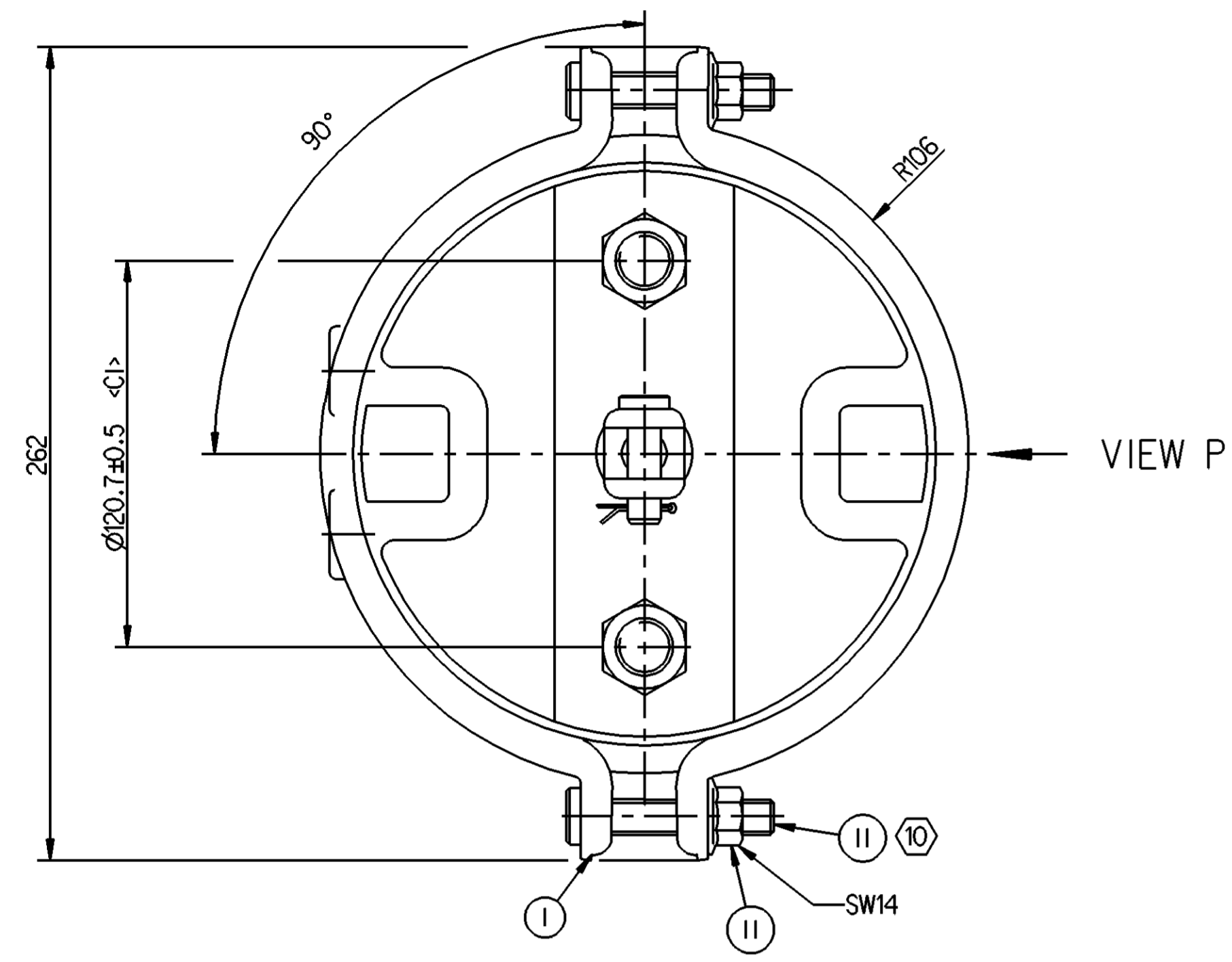
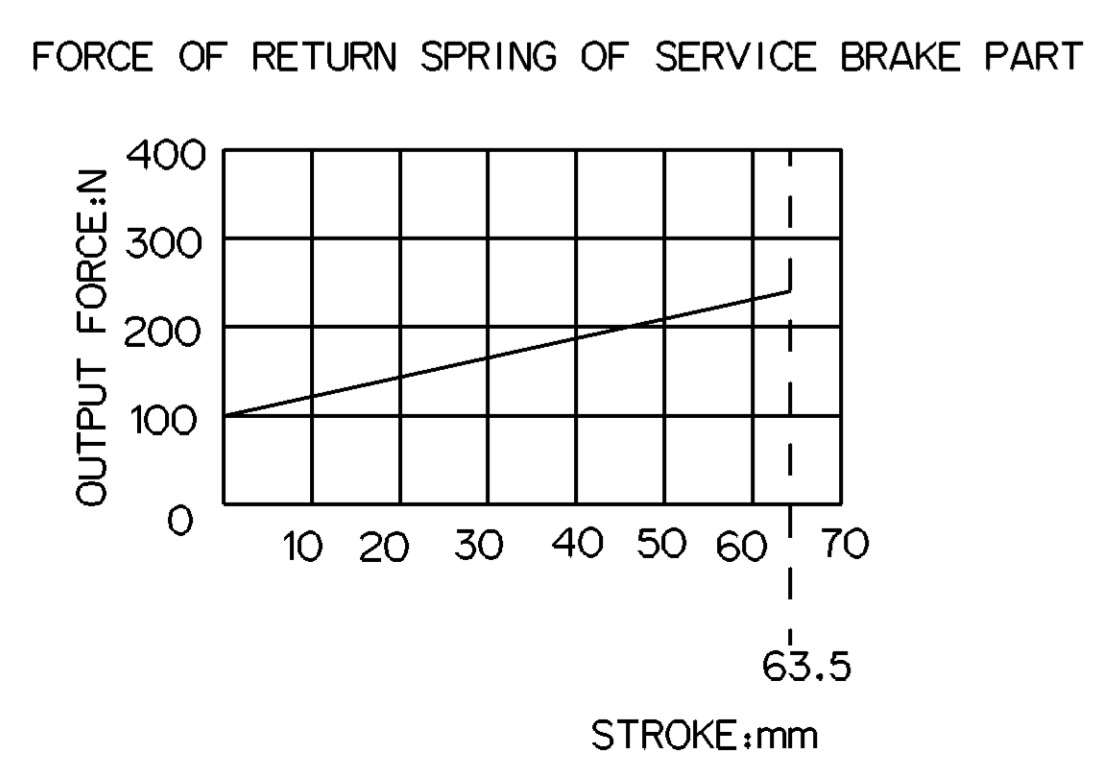
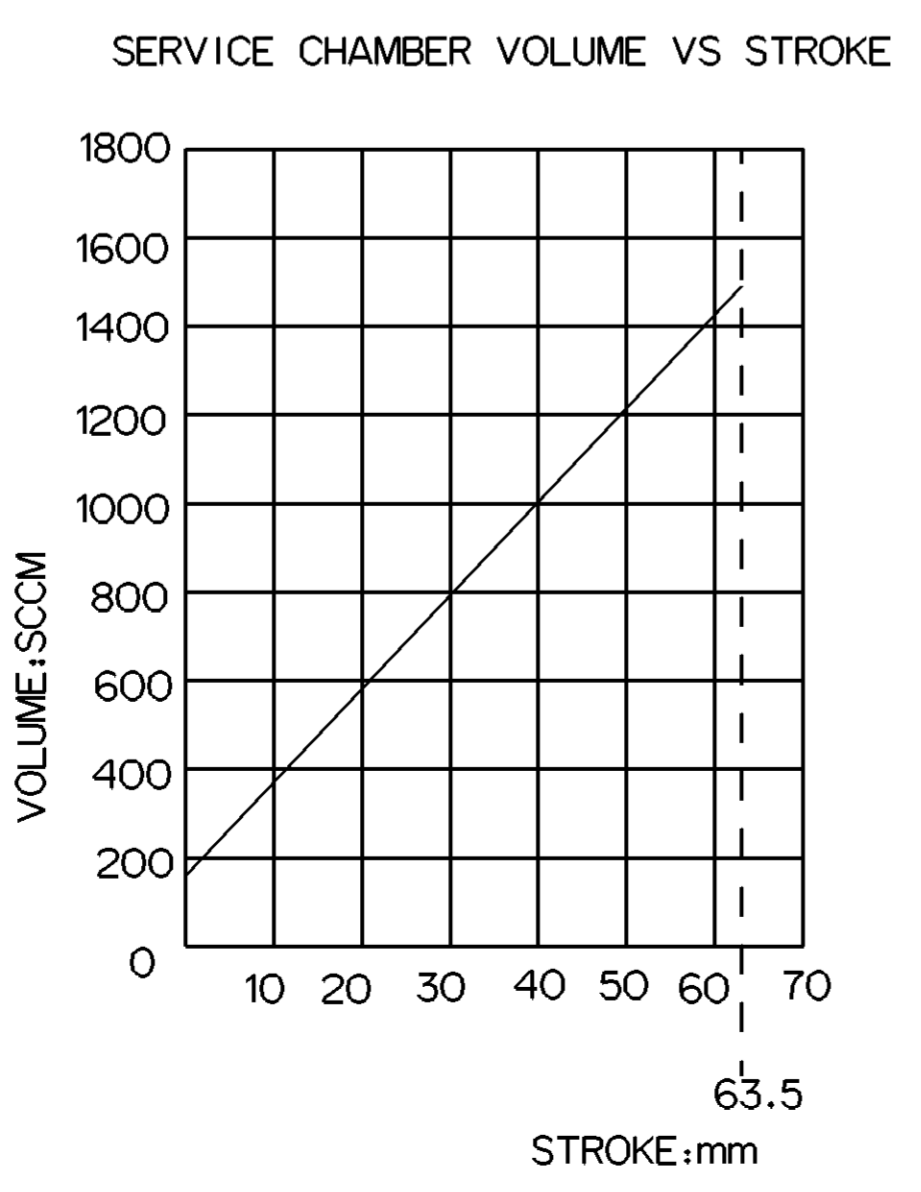
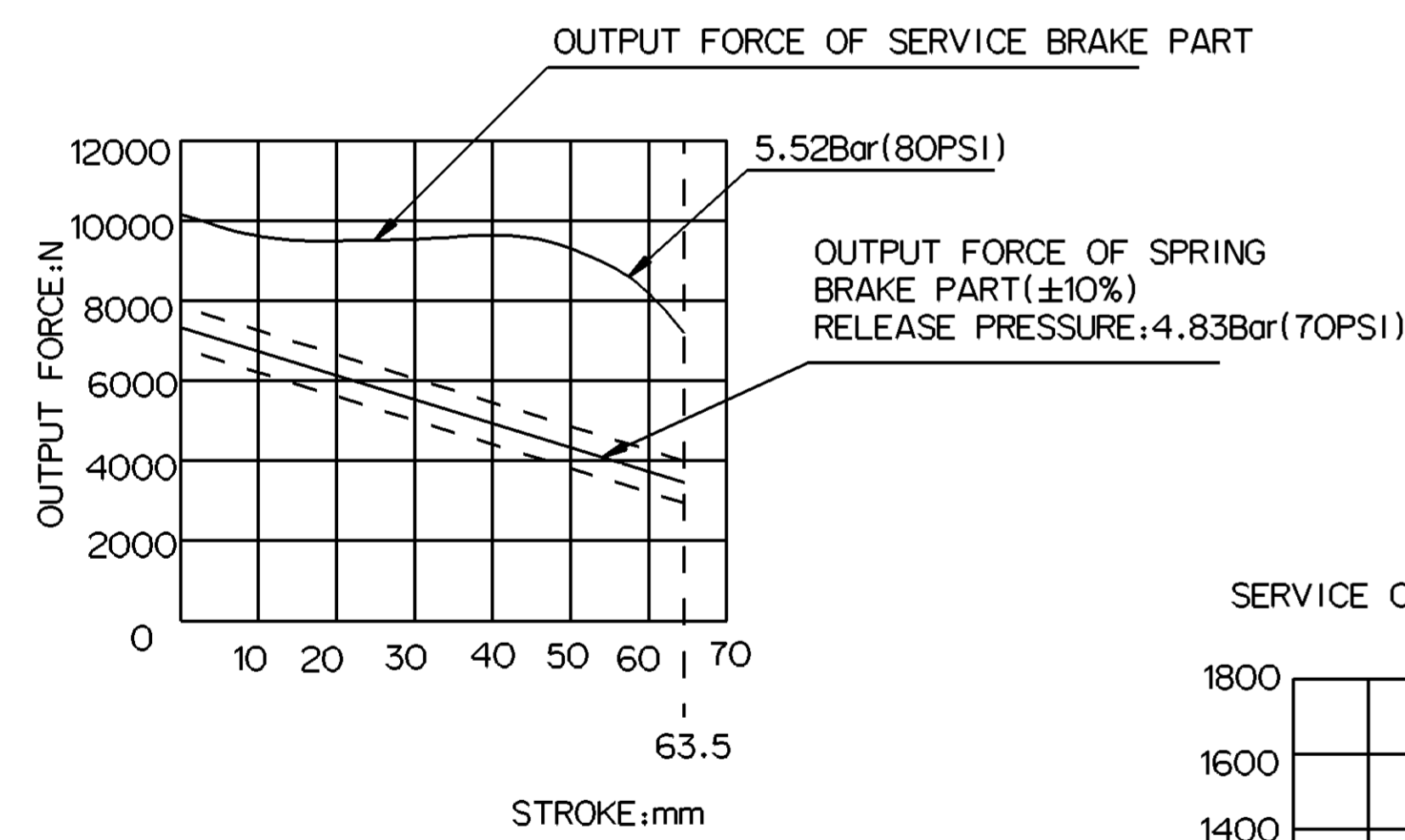


EXTERNAL SURFACE	
I	ELECTRO-PAINTING
II	ZINC PLATED WITH CR6+ FREE
III	HARD POLYETHYLENE
IV	STICKER

<1>	SAFETY CHARACTERISTICS	0
<2>	SIGNIFICANT CHARACTERISTICS	0
<C1>	CUSTOMER INTERFACE	4

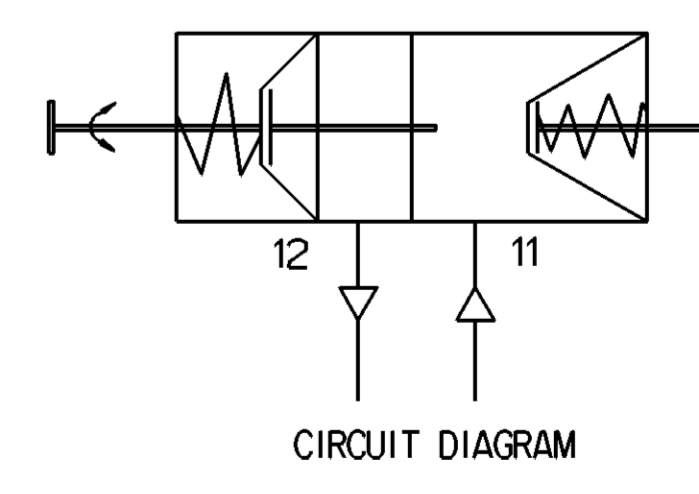
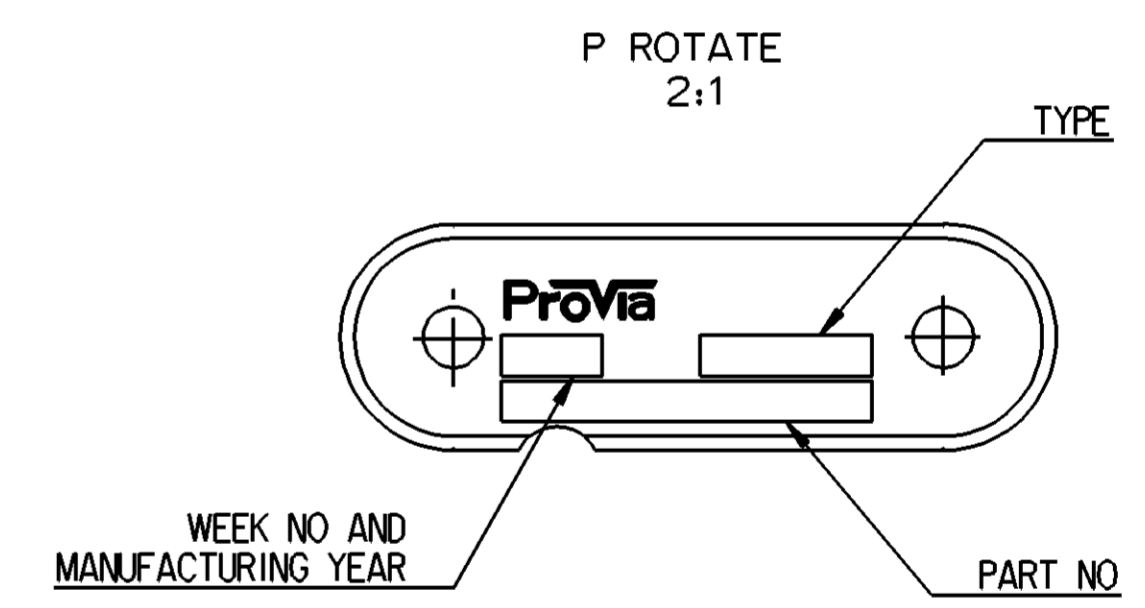


GRAPHS FOR INFORMATION ONLY



- ① OPEN BREATHER HOLE DEFLECTION ANGLE $\pm 30^\circ$
- ② TORQUE: 45±5Nm; THREAD PLUG IS INSTALLED
- ③ DEFLECTION MAX 6° AT 0mm STROKE
- ④ TORQUE: 80±10Nm
- ⑤ TORQUE: MAX 25Nm
- ⑥ CONDITION AS SUPPLIED: POWER SPRING IS NOT COMPRESSED
- ⑦ SIZE WHEN SPRING COMPRESSED
- ⑧ PARTIAL DEFLECTION ANGLE ALLOWED
- ⑨ TORQUE: 220±20Nm
- ⑩ TORQUE: ≥ 25 Nm
- ⑪ DURING DELIVERY CONDITION YOKE WILL BE ASSEMBLED WITH PUSH ROD WITH LIMITED TORQUE. YOKE NEED TO BE TIGHTENED Δ WITH TORQUE OF 80±10Nm BY CUSTOMER DURING INSTALLATION IN VEHICLE
- ⑫ STAND-OUT DIMENSION AFTER ASSEMBLING YOKE
- ⑬ TIGHTENING TORQUE: 20±5Nm Δ

- TECHNICAL REQUIREMENT:
- STROKE
PARKING CHAMBER: ≥ 63.5 mm (2.5")
SERVICE CHAMBER: ≥ 63.5 mm (2.5")
 - WORKING PRESSURE
APPLIED PRESSURE: 8Bar (116 PSI)
MAX.WORKING PRESSURE: 10Bar (145 PSI)
 - WORKING TEMPERATURE: $-40^\circ\text{C} \dots +80^\circ\text{C}$ ($-40^\circ\text{F} \dots +176^\circ\text{F}$)
 - THE DRAWING IS AT CAGED CONDITION, PARKING CHAMBER WILL BE AT UNCAGED CONDITION DURING SHIPMENT



General Specifications: ISO 8015, JED-334-1, Size ISO H4405 LP		Copyright zfr*		
Further Technical Data: PRO 000 006 0		Date	Signature	
Doc. Code: 035	Sheet: 1 To 7	2023-05-09	Murugan	
General Tolerances JED-261		Checked	Manivannan	
Range of Nominal Dimensions (± mm)		Dimensions in mm		
Class	1) ≤ 50	2) $50 > 180$	3) $180 \leq 400$	4) $400 > 1000$
Fine	± 0.5	± 1	± 1.5	± 2
Medium	± 1	± 2	± 3	± 4
Coarse	± 2	± 3.5	± 5	± 6.5
Tapped Holes acc. -		Material No.		
1) Tolerance Class Applied Crossmarked		Mass	Scale	
		9.1 kg	NTS	
		Size	CAD System	
		A 1	CREO	
		Material No. PRO 000 006 0		
		Date of first issue	2023-05-09	
		Doc.Code	Language	
		005	EN	
		Sheet	1/1	
		Revision		
		6x	A	
		Revision		
		5420_AM		
		Replacement for		

Non è permesso copiare o riprodurre questo documento, né utilizzare il contenuto in modo commerciale, senza permesso scritto dalla ProVia. È vietata espressamente la ristampa o l'uso non autorizzato. Il copyright di questo documento è di proprietà della ProVia. Tutti i diritti sono riservati. La ProVia si riserva il diritto di modificare o aggiornare questo documento senza preavviso. L'uso di questo documento è a rischio. La ProVia non è responsabile per danni di qualsiasi natura.