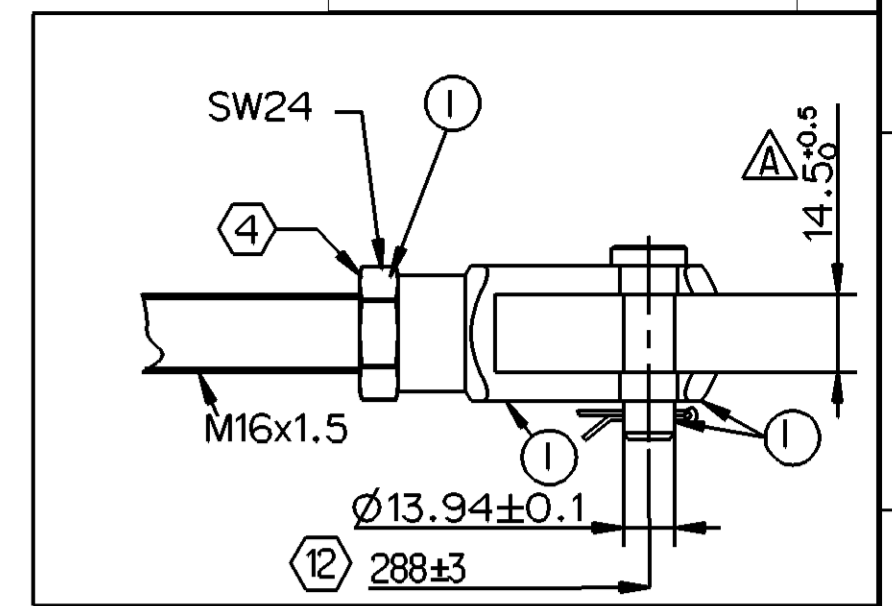
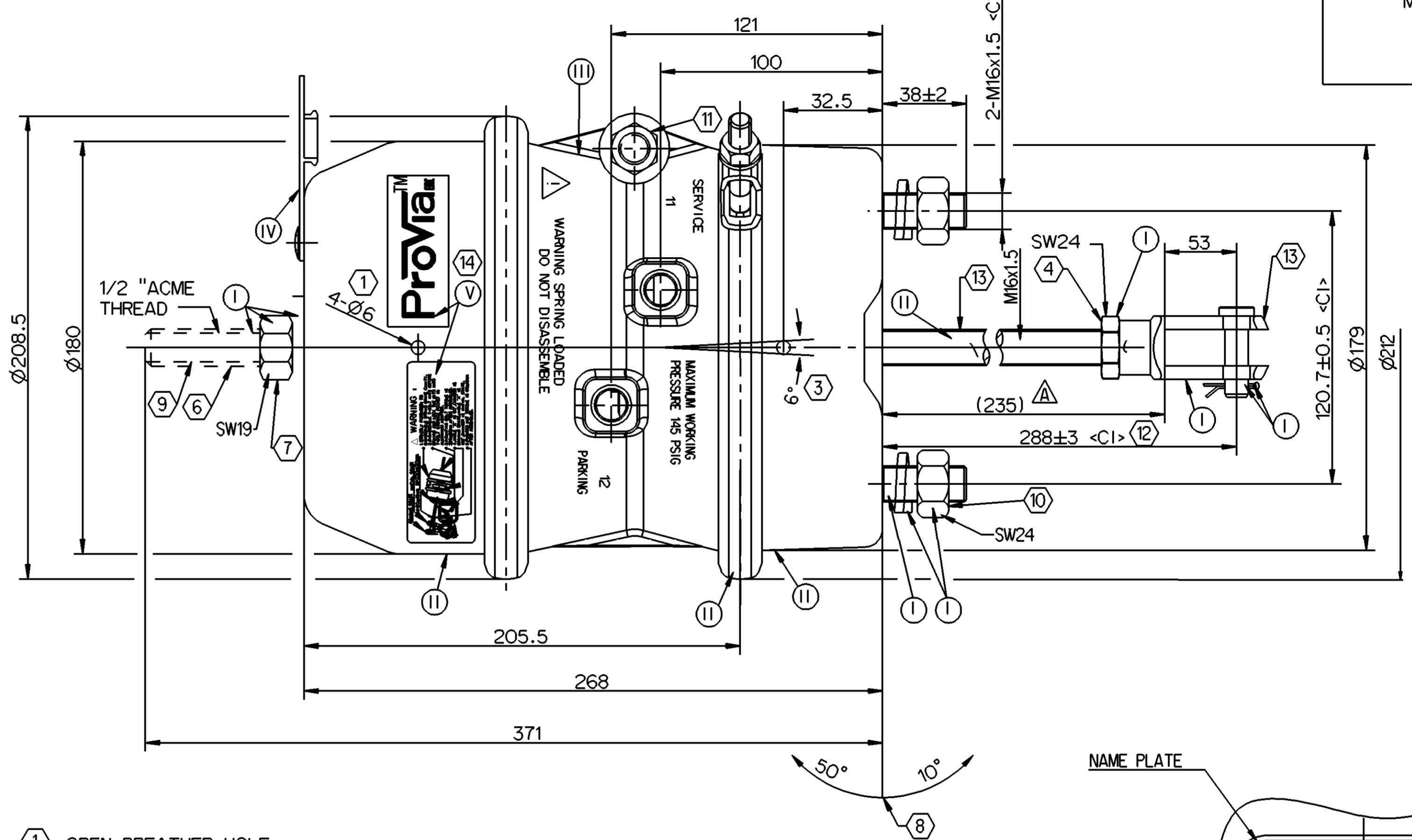
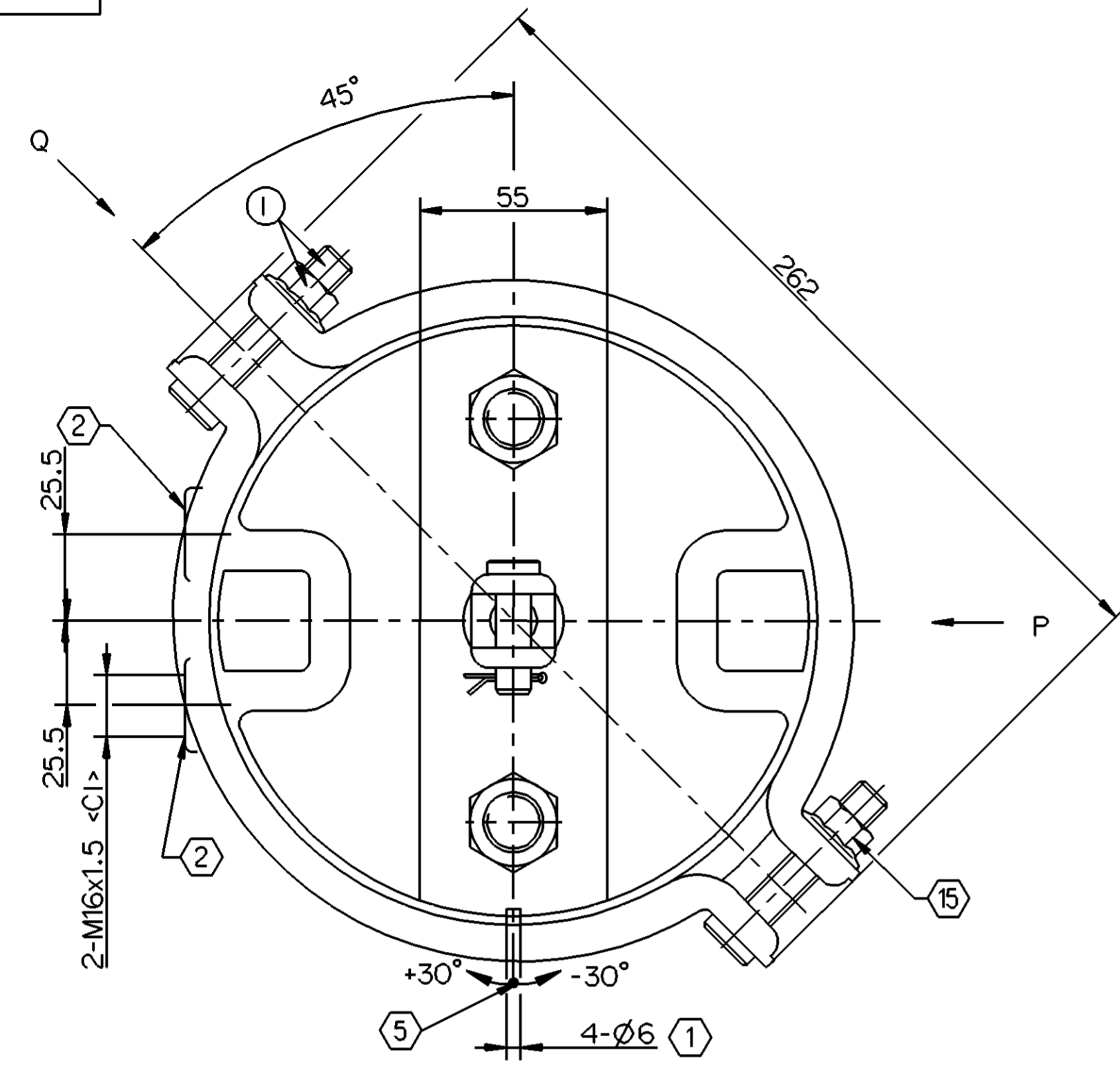


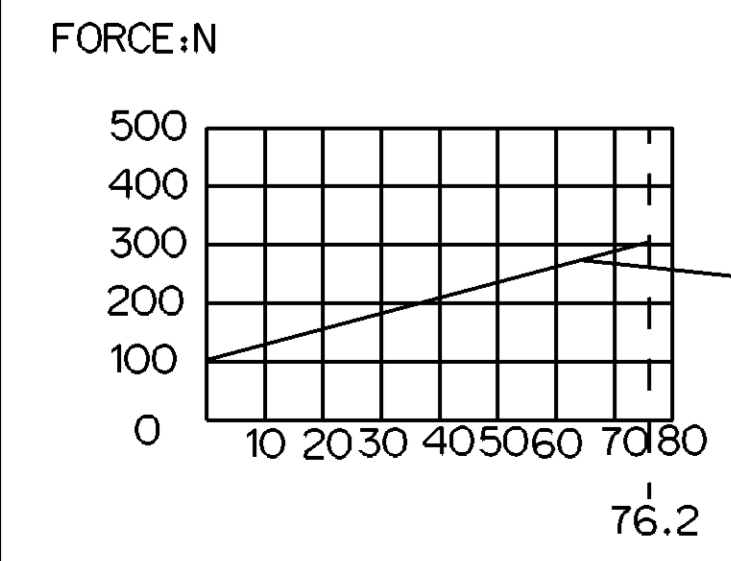
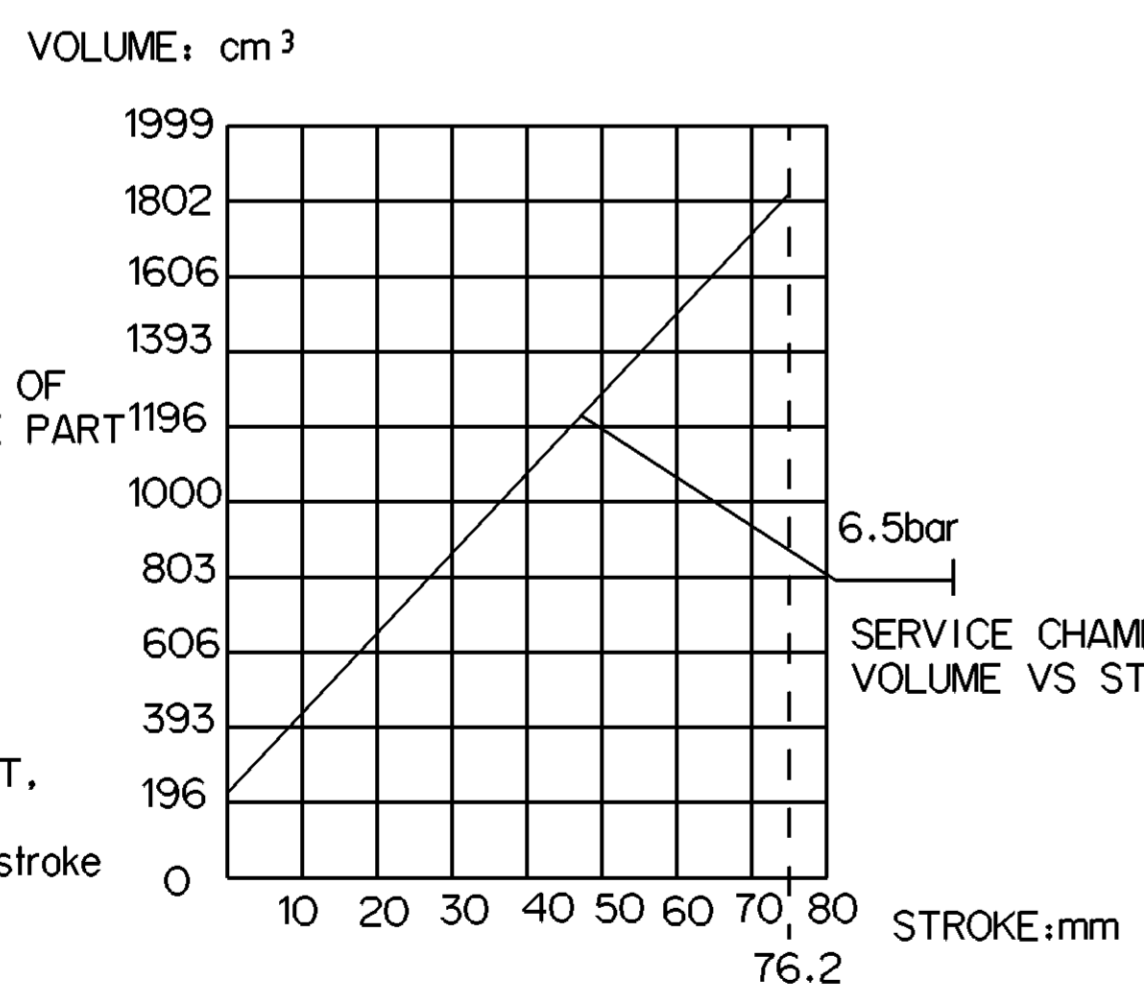
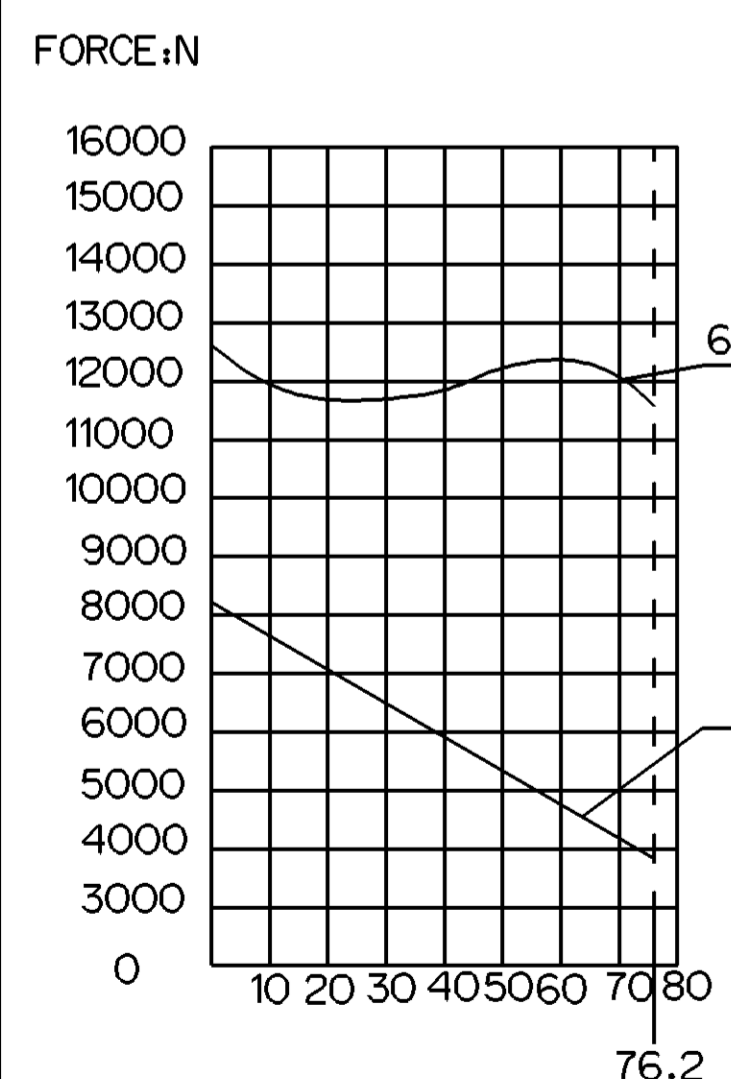
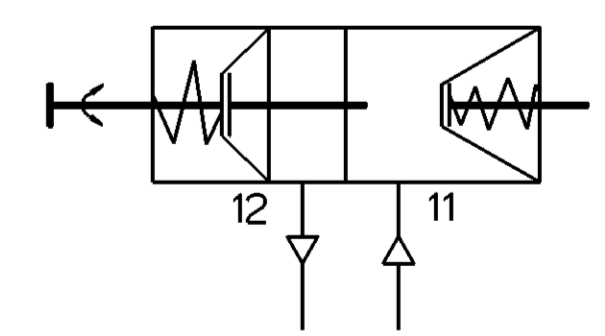
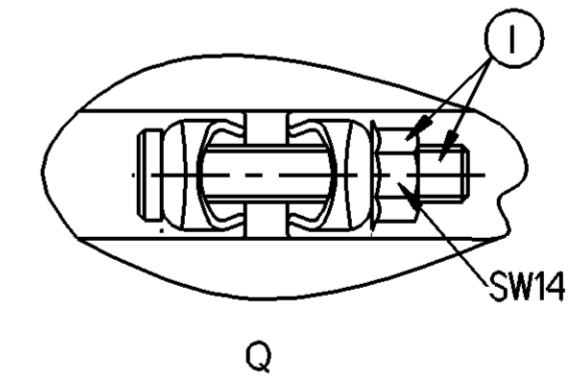
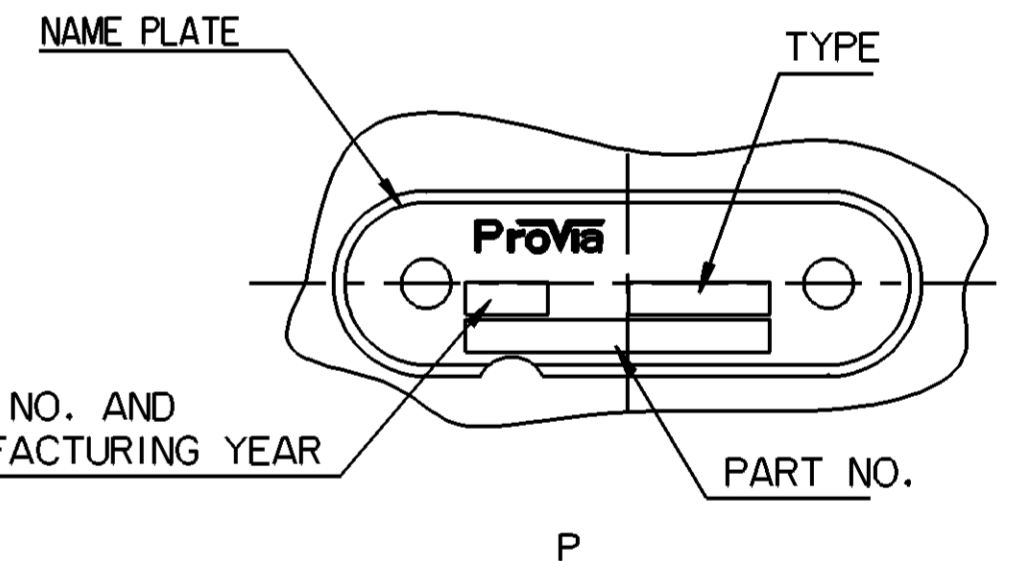
| SURFACE PROTECTION | |
|--------------------|----------------------------|
| I | ZINC PLATED WITH CR6+ FREE |
| II | ELECTRO-PAINTING |
| III | SURFACE OXIDIZATION |
| IV | HARD POLYETHYLENE |
| V | STICKER |



| | | |
|-------|-----------------------------|---|
| <P> | SAFETY CHARACTERISTICS | 0 |
| <S> | SIGNIFICANT CHARACTERISTICS | 0 |
| <C-I> | CUSTOMER INTERFACE | 4 |

Non è permesso copiare o riprodurre questo documento, né utilizzare i contenuti o riprodurre immagini con o senza permesso. Toute réimpression ou communication de son contenu sans autorisation est formellement interdite. Any reproduction or communication of its content without express permission is prohibited. All rights reserved.

- ① OPEN BREATHER HOLE
- ② TORQUE: 34Nm MAX.
- ③ DEFLECTION: 6° MAX AT STROKE:0 mm
- ④ TORQUE: 80±10Nm
- ⑤ TO BE INSTALLED WITH THE BREATHER HOLE OPEN AT BOTTOM MOST POSITION
- ⑥ CONDITION AS SUPPLIED : SPRING BRAKE APPLIED
- ⑦ TORQUE:MAX.25Nm
- ⑧ ADMISSIBLE INSTALLATION POSITION
- ⑨ RELEASED POSITION
- ⑩ TORQUE: 220±20 Nm
- ⑪ FIXTURE OF RELEASE BOLT TORQUE: 22.5±2.5 Nm
- ⑫ STAND-OUT DIMENSION AFTER ASSEMBLING YOKE
- ⑬ DURING DELIVERY CONDITION YOKE WILL BE ASSEMBLED WITH PUSH ROD WITH LIMITED TORQUE. YOKE NEED TO BE TIGHTENED WITH TORQUE OF 80±10Nm BY CUSTOMER DURING INSTALLATION IN VEHICLE
- ⑭ DIRECTION: AS SHOWN IN THE PICTURE POSITION: IN THE MIDDLE OF THE TWO BREATHER HOLES, AND THE HORIZONTAL CENTER LINE OF STICKERS IS SAME AS THE BREATHER HOLE'S
- ⑮ TORQUE: ≥25Nm



GRAPHS FOR INFORMATION ONLY

- TECHNICAL REQUIREMENT:
- STROKE-PARKING CHAMBER: ≥76.2mm
SERVICE CHAMBER: ≥76.2mm;
 - WORKING PRESSURE: APPLIED PRESSURE 8.5Bar;
MAX WORKING PRESSURE: 10Bar
 - WORKING TEMPERATURE: -40°C...+80°C (-40°F...+176°F);
 - THE DRAWING IS AT CAGED CONDITION, THE PARKING CHAMBER WILL BE AT UNCAGED CONDITION DURING SHIPMENT

| | | | |
|--|---------------|------------------|---------------------|
| General Specifications: ISO 8015, JED-334-1, Size ISO 14405 LP | | Copyright ©* | |
| Further Technical Data: PRO 000 008 0 | | Date | Signature |
| Doc. Code: 035 | Sheet: 1 To 4 | 2023-05-08 | Murugan |
| General Tolerances JED-261 | | Checked | |
| Range of Nominal Dimensions (± mm) | | 2023-05-09 | |
| Class | 1) ≤ 50 ±0.5 | > 50 < 180 ±1 | > 180 < 400 ±1.5 |
| Fine | ±0.5 | ±1 | ±1.5 |
| Medium | ±1 | ±2 | ±3 |
| Coarse | ±2 | ±3.5 | ±5 |
| Dimensions in mm | | | |
| Mass | Scale | Material No. | |
| 9.9 kg | NTS | PRO 000 010 0 | |
| Size | CAD System | Doc. Code | Language |
| A 1 | CREO | 005 | EN |
| Tapped Holes acc. - | | Revision | Techn. Resp. |
| 1) Tolerance Class Applied Crossmarked | | 514015 | 4x A 5420_AM |
| Date of first issue: 2023-05-09 | | Replacement for | |