

THERMAL RANGE OF APPLICATION  
THERMISCHER ANWENDUNGSBEREICH  
GAMME D'APPLICATION THERMIQUE  
CAMPO DI APPLICAZIONE TERMICA

-40°C....+80°C  
MAX. TEMP. 100°C  
ADMISSIBLE DURING LIMITED  
PERIOD OF 20h

TORQUE FOR CONNECTIONS  
ANZUGSMOMENT FÜR EINSCHRAUBSTUTZEN  
COUPLE DE SERRAGE DES RACCORDS  
COPPIA DI SERRAGGIO DEI RACCORDI

30 Nm MAX

- ① INLET  
VORRAT  
ALIMENTATION  
ALIMENTAZIONE (HIGH PRESSURE)  
(HOCHDRUCK)  
(HAUTE PRESSION)  
(ALTA PRESSIONE)
- ② DELIVERY  
AUSGESTEURTE LUFT  
UTILISATION  
UTILIZZAZIONE (LOW PRESSURE)  
(NIEDERDRUCK)  
(BASSE PRESSION)  
(BASSA PRESSIONE)
- ③ EXHAUST  
ENTLUEFTUNG  
ECHAPPEMENT  
SCARICO

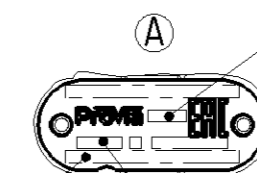
DELIVERY PRESSURE  
AUGESTFUERTER  
PRESSION D'UTILISATION  
PRESSIONE D'UTILIZZAZIONE P2=8.0+0.3/-0.1 bar FOR  
FUER P1=12 bar  
POUR PER

OPENING OF SAFETY VALVE  
OEFFNUNG DES SICHERHEITSVENTILS  
OUVERTURE DE LA SOUPEPE DE SECURITE P2+2.5 bar (MAX)  
APERTURA DELLA VALVOLA DI SICUREZZA

NOMINAL DIAMETER MIN.  
MIN. FREIER DURCHGANG  
DIAMETRE NOMINAL MIN.  
DIAMETRO NOMINALE MIN. 10 mm (78.5 mm<sup>2</sup>)

MEDIUM  
MEDIUM  
FLUIDE  
FLUIDE AIR  
LUFT  
AIR  
ARIA

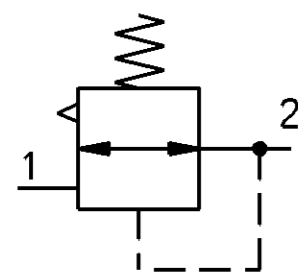
NAME PLATE DETAILS



MANUFACTURING PLANT:  
PRODUKTIONSSTAETTE: JED-225  
LIEU DE FABRICATION:  
LUOGO DI FABRICAZIONE:

ProVia IDENTIFICATION NUMBER  
ProVia TEILE NUMMER  
NUMERO D'IDENTIFICATION ProVia  
NUMERO D'IDENTIFICAZIONE

WEEK / YEAR OF MANUFACTURE  
FERTIGUNGSWOCHE / JAHR  
SEMAINE / ANNEE DE FABRICATION  
SETTIMANA / ANNO DELLA FABRICAZIONE



INLET  
VORRAT  
ALIMENTATION  
ALIMENTAZIONE

P1 MAX = 20 bar

IF  
FALLS  
SI  
SE

P1

CONSTANT  
UNVERANDERLICH  
CONSTANTE  
INVARIABILE

General Specification: JED-334-1, Size ISO 14405 LP		Copyright WABCO®		<b>ProVia</b>	
Further Technical Data:		Date	Signature		
Doc. Code:	Sheet: To:	2018-09-19	Aswinkumar	PRESSURE LIMITING VALVE DRUCKBEGRENZUNGSVENTIL	
General Tolerances JED-261		Checked	Vallarasu	VALVE DE LIMITATION DE PRESSION VALVOLA LIMITATRICE DI PRESSIONE	
Range of Nominal Dimensions ( ± mm)		Expert		K P NAGARAJAN	
Class 1)	≤ 50 > 50 ≤ 180 > 180 ≤ 400 > 400	Mass	Scale	Material No.	Date of first issue: 2015-11-20
Fine	0.5 1.0 1.5 2.0	0.379	1:1	PRO 015 005 0	Doc.Code Language Sheet
Medium	1.0 2.0 3.0 4.0	kg			005 ML 1/1
Coarse	2.0 3.5 5.0 6.5	Size	CAD System	ECN-No.	Revision Techn. Resp.
Tapped Holes acc. JED-152		A 2	CREO	177205	1 A 5160_AM
1) Tolerance Class Applied Crossmarked				Replacement for	

100mm

Non e permesso, concesso, o terzi, o riproduzione di questo documento, ne utilizzare il contenuto o renderlo comunque noto a terzi senza autorizzazione esplicita. Ogni infrazione costituisce un evidente abuso e comportera il risarcimento dei danni subiti. E' fatta riserva di tutti i diritti derivanti da brevetti o modelli.

Toute communication ou reproduction de ce document, toute exploitation ou communication de son contenu sont interdites, sauf autorisation expresse. Tout manquement a cette regle constitue un abus evident et expose son auteur au versement de dommages et interets. Tous droits de propriete industrielle reserves, notamment en matiere de brevets et de modesles.

Weitergabe sowie Vervielfaltigung dieser Unterlagen, Vervielfachen und Mitteilen ihres Inhalts nicht gestattet, soweit nicht ausdrücklich ansonsten, Zuerstverordnungen, stellen einer offensichtlichen Missbrauch dar und verpflichten zu Schadenersatz. Alle Rechte hier den Fall der Patentierung oder Gebrauchsmuster-Eintragung vorbehalten.

This document is the property of WABCO. It is not to be reproduced, stored in a retrieval system, or transmitted in any form or by any means, electronic, mechanical, photocopying, recording, or by any information storage and retrieval system, without the prior written permission of WABCO.

doc: PRO0150050...\_0217 version: A.3 / still: Liefer Review / mod: PRO0150050...\_A02