

THERMAL RANGE OF APPLICATION
THERMISCHER ANWENDUNGSBEREICH
GAMME D'APPLICATION THERMIQUE
CAMPO DI APPLICAZIONE TERMICA

-40°C....+80°C

TORQUE FOR CONNECTIONS
ANZUGSMOMENT FÜR EINSCHRAUBSTUTZEN
COUPLE DE SERRAGE DES RACCORDS
COPPIA DI SERRAGGIO DEI RACCORDI

38.5 Nm MAX

- ① INLET
VORRAT
ALIMENTATION
ALIMENTAZIONE (HIGH PRESSURE)
(HOCHDRUCK)
(HAUTE PRESSION)
(ALTA PRESSIONE)
- ② DELIVERY
AUGESTEURE LUFT
UTILISATION
UTILIZZAZIONE (LOW PRESSURE)
(NIEDERDRUCK)
(BASSE PRESSION)
(BASSA PRESSIONE)
- ③ EXHAUST
ENTLUEFTUNG
ECHAPPEMENT
SCARICO

DELIVERY PRESSURE
AUGESTFUERTER
PRESSION D'UTILISATION
PRESSIONE D'UTILIZZAZIONE

P2=9.0+0.1/-0.4 bar FOR
FUER P1=10 bar
POUR PER

OPENING OF SAFETY VALVE
OEFFNUNG DES SICHERHEITSVENTILS
OUVERTURE DE LA SOUPEPE DE SECURITE
APERTURA DELLA VALYOLA DI SICUREZZA

P2+2.5 bar (MAX)

NOMINAL DIAMETER MIN.
MIN. FREIER DURCHGANG
DIAMETRE NOMINAL MIN.
DIAMETRO NOMINALE MIN.

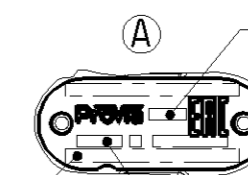
10 mm (78.5 mm²)

MEDIUM
MEDIUM
FLUIDE
FLUIDE

AIR
LUFT
AIR
ARIA

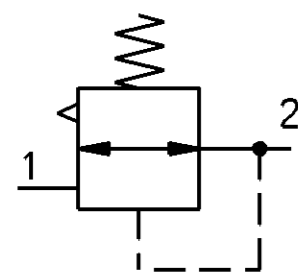
NAME PLATE DETAILS

MANUFACTURING PLANT:
PRODUKTIONSSTAETTE: JED-225
LIEU DE FABRICATION:
LUOGO DI FABRICAZIONE:



ProVia IDENTIFICATION NUMBER
ProVia TEILE NUMMER
NUMERO D'IDENTIFICATION ProVia
NUMERO D'IDENTIFICAZIONE

WEEK / YEAR OF MANUFACTURE
FERTIGUNGSWOCHE / JAHR
SEMAINE / ANNEE DE FABRICATION
SETTIMANA / ANNO DELLA FABRICAZIONE



INLET
VORRAT
ALIMENTATION
ALIMENTAZIONE

P1 MAX = 14 bar

P1 MAX = 10 bar

IF
FALLS
SI
SE

P1

CONSTANT
UNVERÄNDERLICH
CONSTANTE
INVARIABILE

IF
FALLS
SI
SE

P1

VARIABLE
VERÄNDERLICH
VARIABLE
VARIABLE

General Specification: JED-334-1, Size ISO 14405 LP		Copyright WABCO®		ProVia	
Further Technical Data:		Date	Signature		
Doc. Code:	Sheet:	To:	2018-09-19	Aswinkumar	PRESSURE LIMITING VALVE DRUCKBEGRENZUNGSVENTIL VALVE DE LIMITATION DE PRESSION VALVOLA LIMITATRICE DI PRESSIONE
General Tolerances JED-261		Checked	2018-09-20	Vallarasu	
Range of Nominal Dimensions (± mm)		Expert	K P NAGARAJAN		
Class 1)	≤ 50	> 50 ≤ 180	> 180 ≤ 400	> 400	
Fine	0.5	1.0	1.5	2.0	±3°
Medium	1.0	2.0	3.0	4.0	
Coarse	2.0	3.5	5.0	6.5	
Tapped Holes acc. JED-152		Mass	Scale	Material No.	Date of first issue: 2015-11-20
1) Tolerance Class Applied Crossmarked		0.377	1:1	PRO 015 068 0	Doc.Code Language Sheet
		A 2	CREO	ECN-No. 177205	Revision 1 A
				Techn. Resp. 5160_AM	Replacement for -

100mm