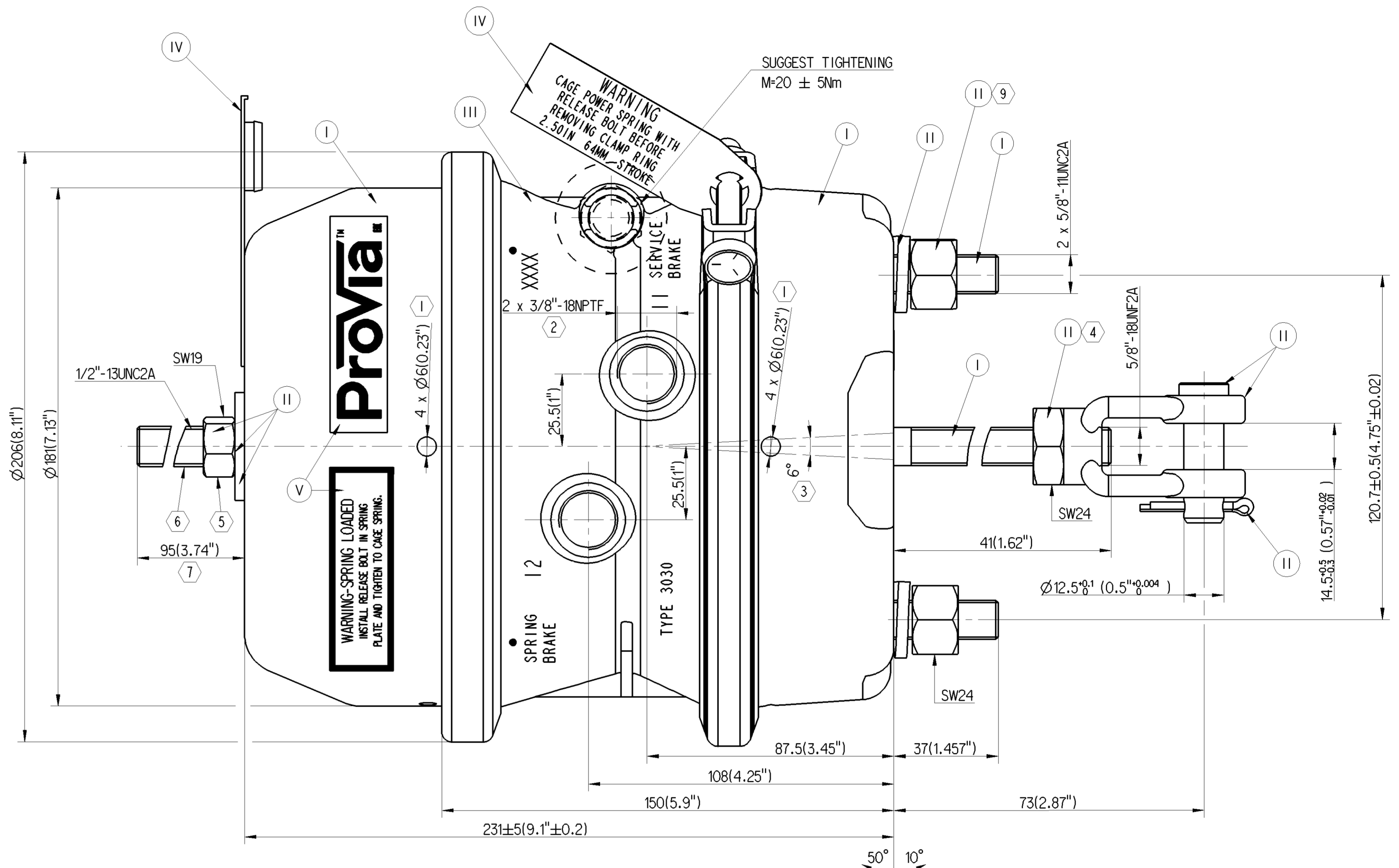
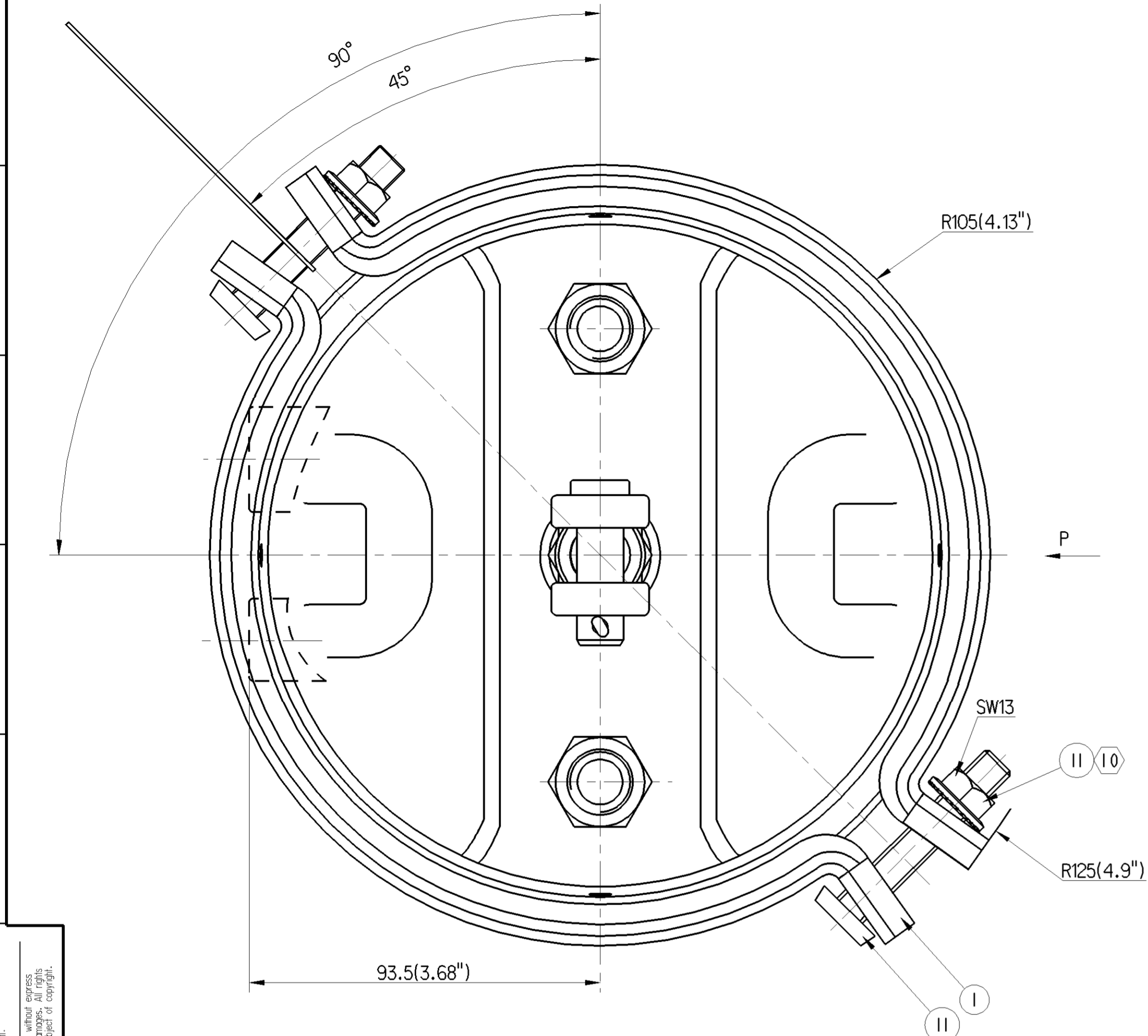
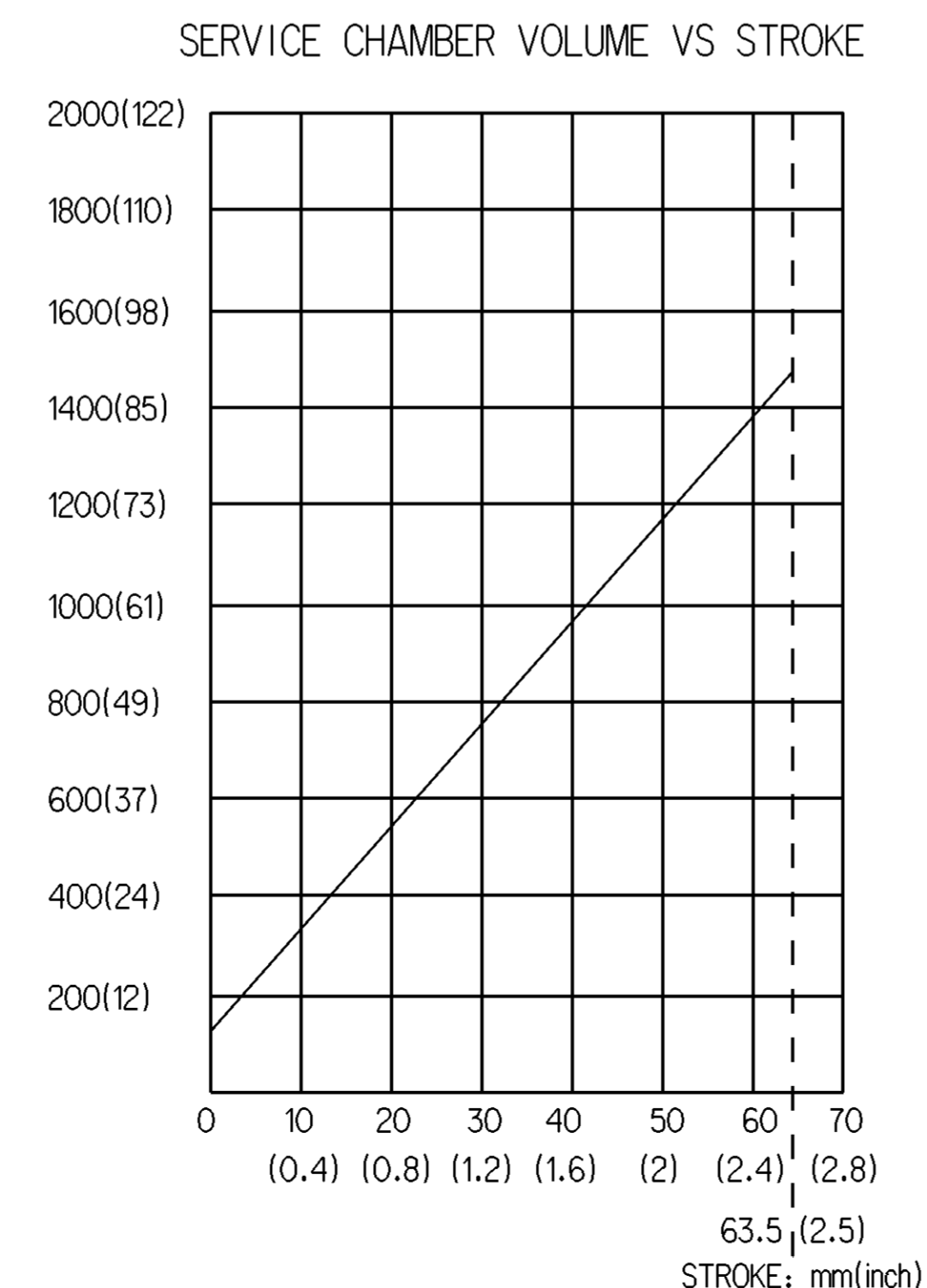
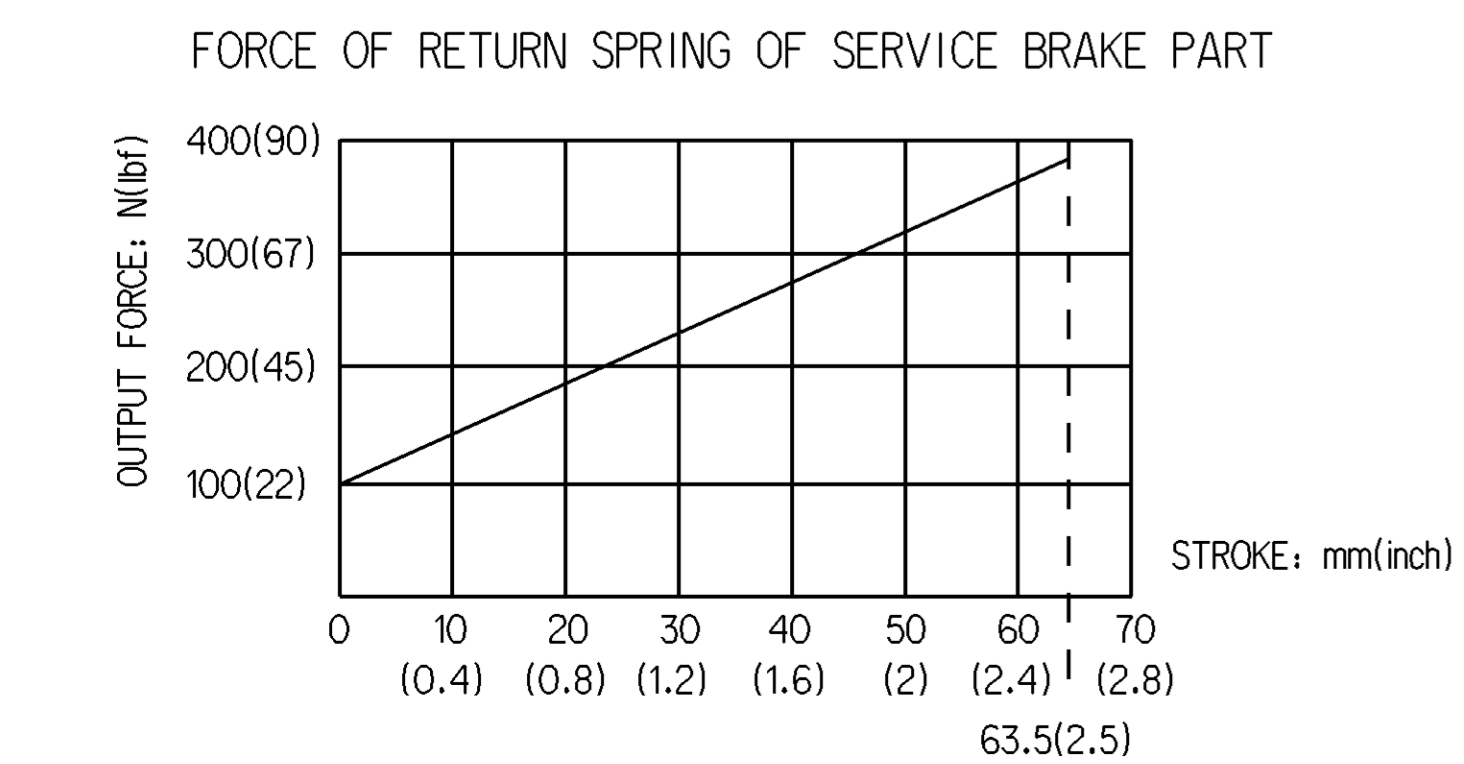
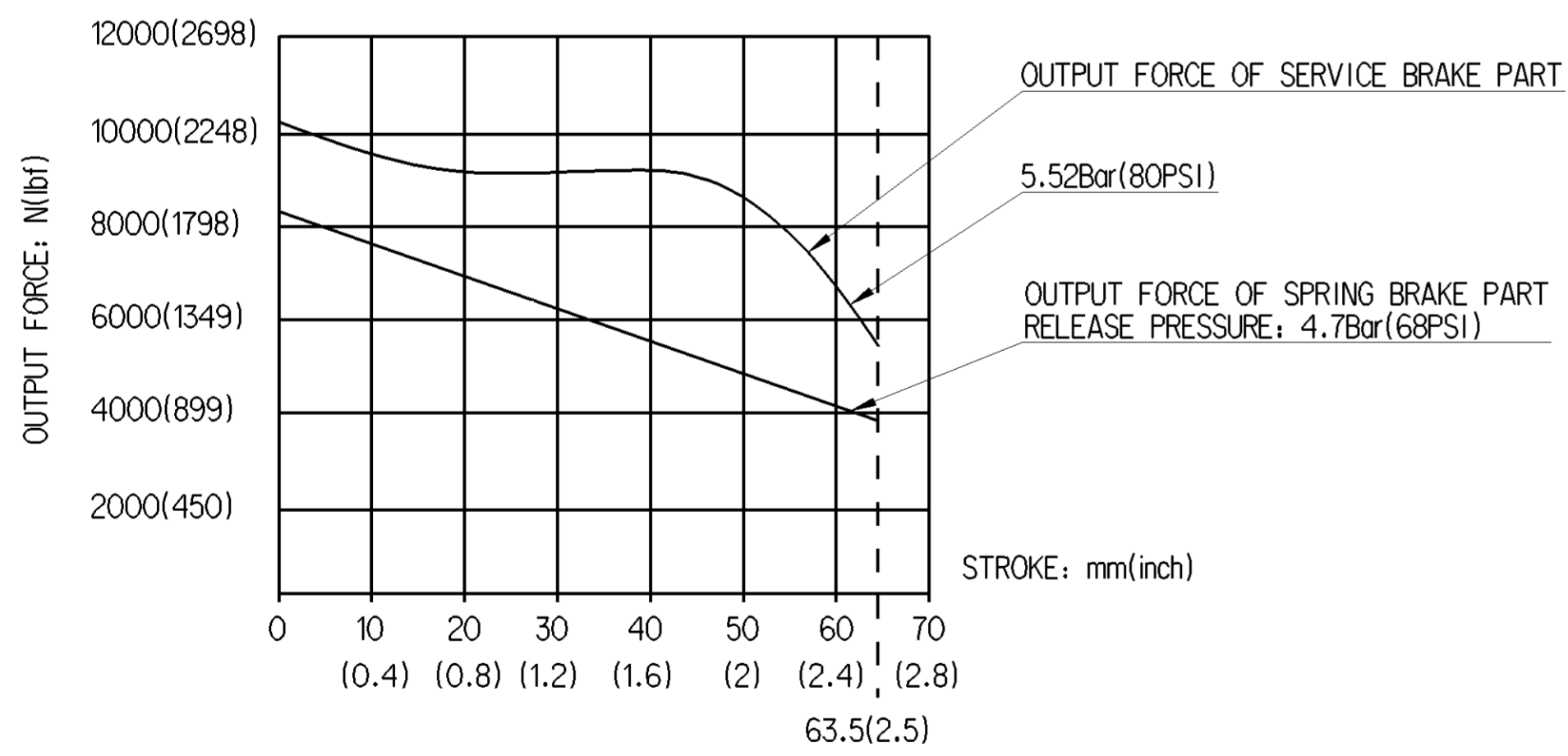


EXTERNAL SURFACE	
I	ELECTRO-PAINTING
II	ZINC PLATED WITH CR6+ FREE
III	SURFACE OXIDIZATION
IV	HARD POLYETHYLENE
V	STICKER



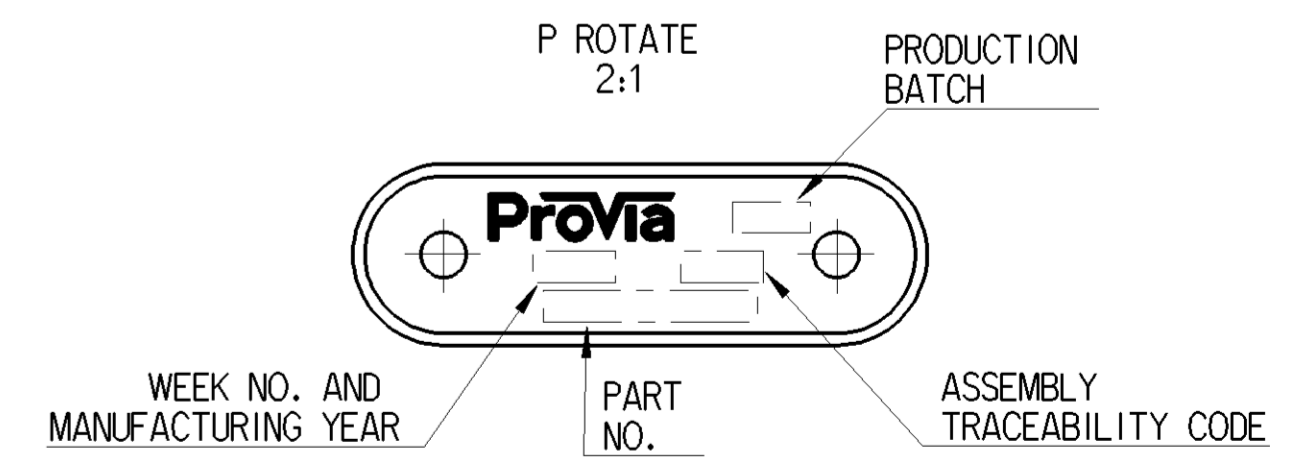
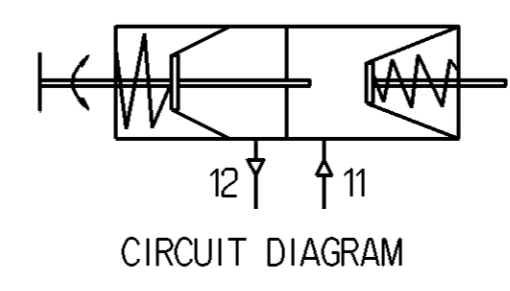
Non e permesso copiare o riprodurre questo documento, ne utilizzare i contenuti a fini di lucro, senza permesso scritto dalla Prövia. Tutti i diritti sono riservati. E' vietata espressamente la ristampa o l'uso non autorizzato di questo documento. Il copyright e' riservato a Prövia.



GRAPHS FOR INFORMATION ONLY

- ① OPEN BREATHER HOLE, DEFLECTION ANGLE $\pm 30^\circ$.
- ② TORQUE: $45 \pm 5 \text{ Nm}$; THREAD PLUG IS INSTALLED.
- ③ DEFLECTION: MAX 6° AT 0mm STROKE.
- ④ TORQUE: $80 \pm 10 \text{ Nm}$.
- ⑤ TORQUE: MAX 25 Nm .
- ⑥ CONDITION AS SUPPLIED; SPRING RELEASED.
- ⑦ SIZE WHEN SPRING COMPRESSED.
- ⑧ PARTIAL DEFLECTION ANGLE ALLOWED.
- ⑨ TORQUE: $220 \pm 20 \text{ Nm}$.
- ⑩ TORQUE: $\geq 25 \text{ Nm}$.

- TECHNICAL REQUIREMENT:**
- STROKE - PARKING CHAMBER: $\geq 63.5 \text{ mm}(2.5")$; SERVICE CHAMBER: $\geq 63.5 \text{ mm}(2.5")$;
 - WORKING PRESSURE: APPLIED PRESSURE $8 \text{ Bar}(116 \text{ PSI})$; MAX. WORKING PRESSURE: $10 \text{ Bar}(145 \text{ PSI})$;
 - WORKING TEMPERATURE: $-40^\circ \text{ C} \dots +80^\circ \text{ C}(-40^\circ \text{ F} \dots +176^\circ \text{ F})$;
 - THE DRAWING IS AT CAGED CONDITION, THE PARKING CHAMBER WILL BE AT UNCAGED CONDITION DURING SHIPMENT;



General Specification: JED-334-1 - Size ISO 14405 LP		Copyright WABCO®	
Further Technical Data:		Date: 2016-09-09	Signature: Kolkowski
Doc. Code:	Sheet: To	Checked: 2016-09-12	Przybysz
General Tolerances JED-261		Expert: Przybysz	
Range of Nominal Dimensions (± mm)			
Class	1)	≤ 50	50 > 180
		180 ≤ 400	400 > 400
Class	2)	≤ 1.0	1.0 > 1.5
		1.5 > 2.0	2.0 > 3.0
		3.0 > 4.0	4.0 > 6.5
Course		2.0	3.5
		5.0	6.5
Tapped Holes acc. -		Material No. PRO 393 204 0	
1) Tolerance Class Applied: Crossmarked		Date of first issue: 2016-09-12	Doc. Code: Language: Sheet: 005 EN 1/1
Mass	Scale	20 lbs	1:1
Size	CAD System	CREO	5420_AM