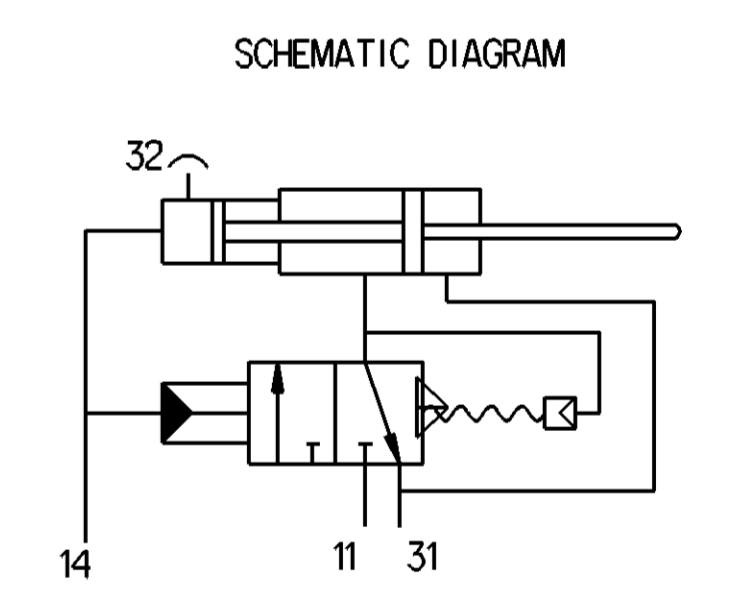
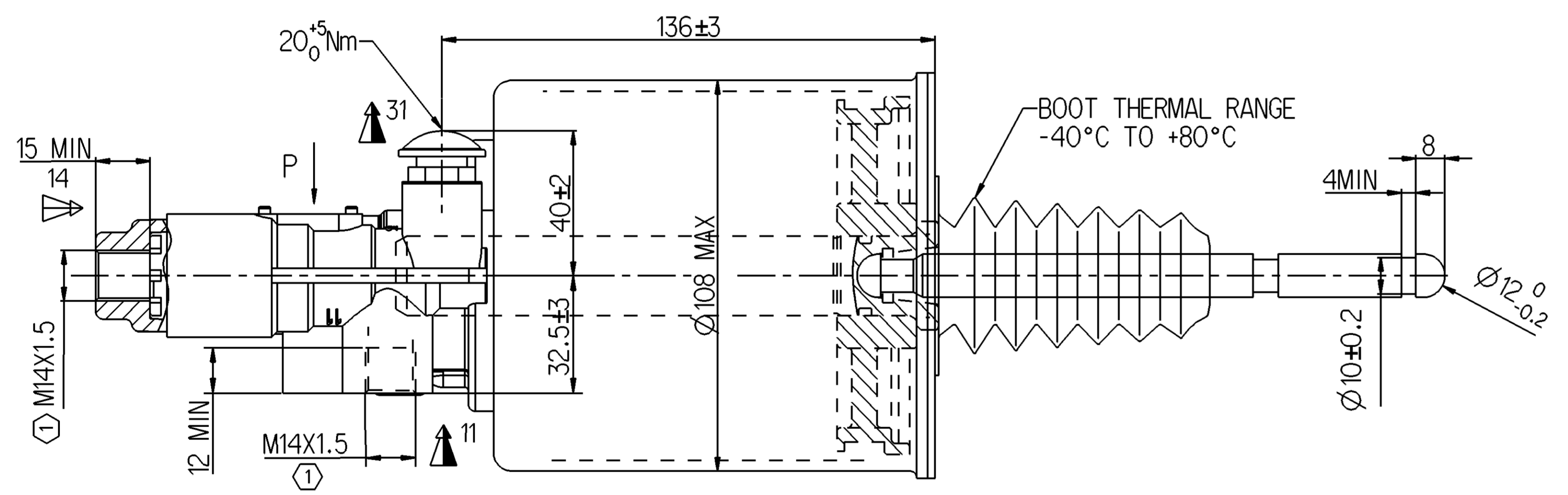
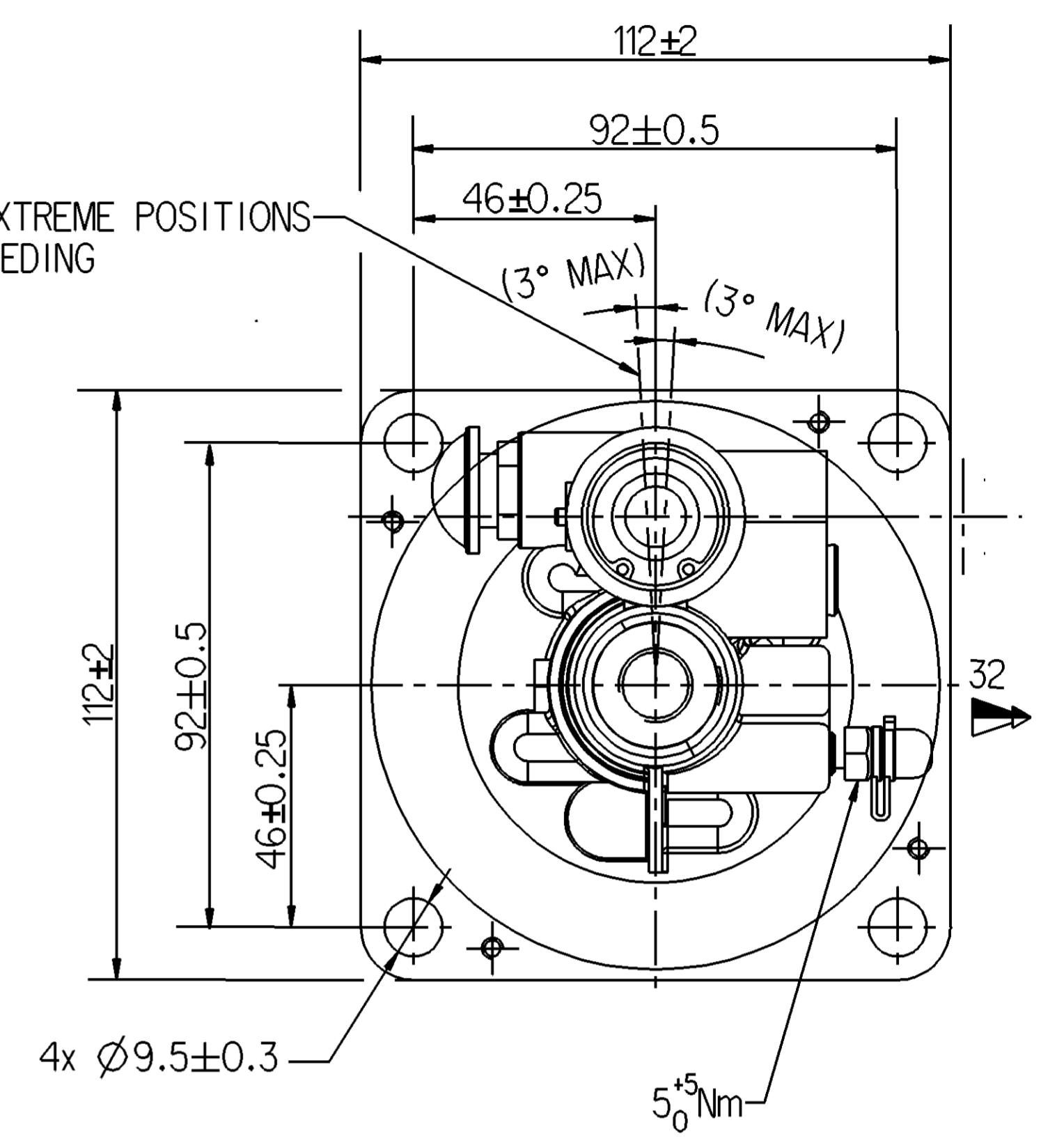
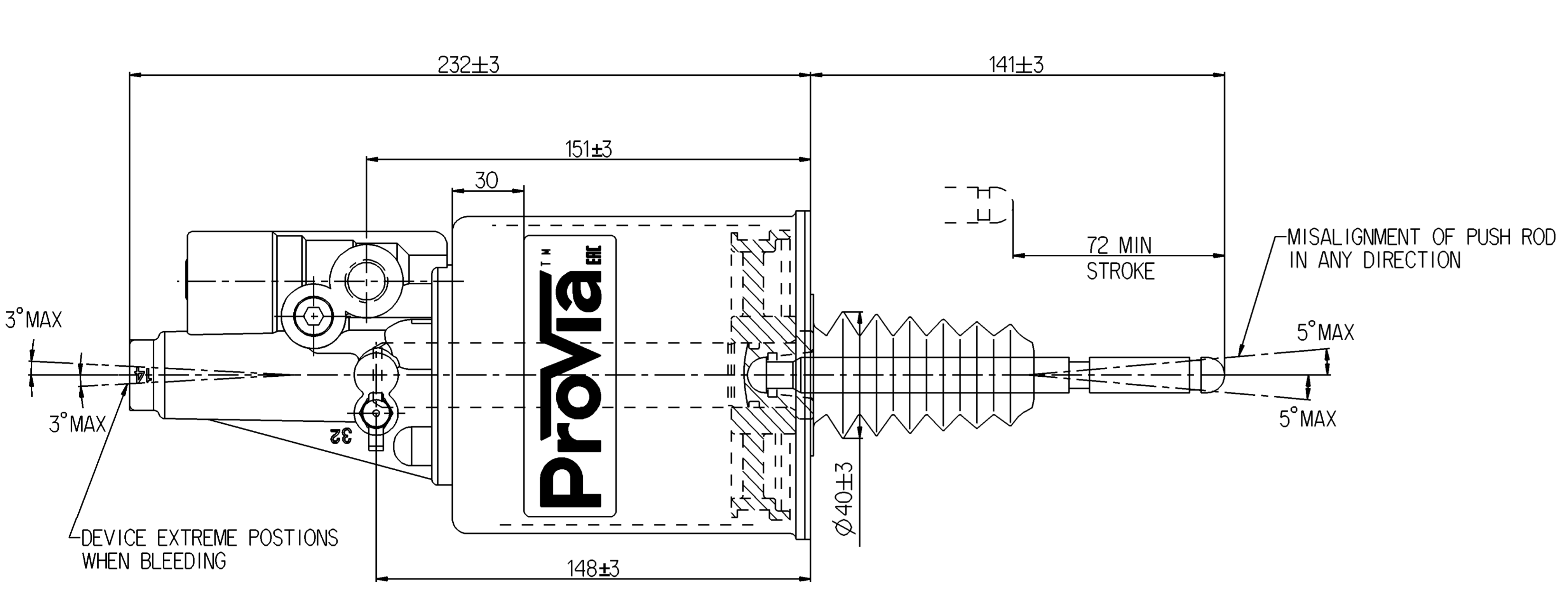


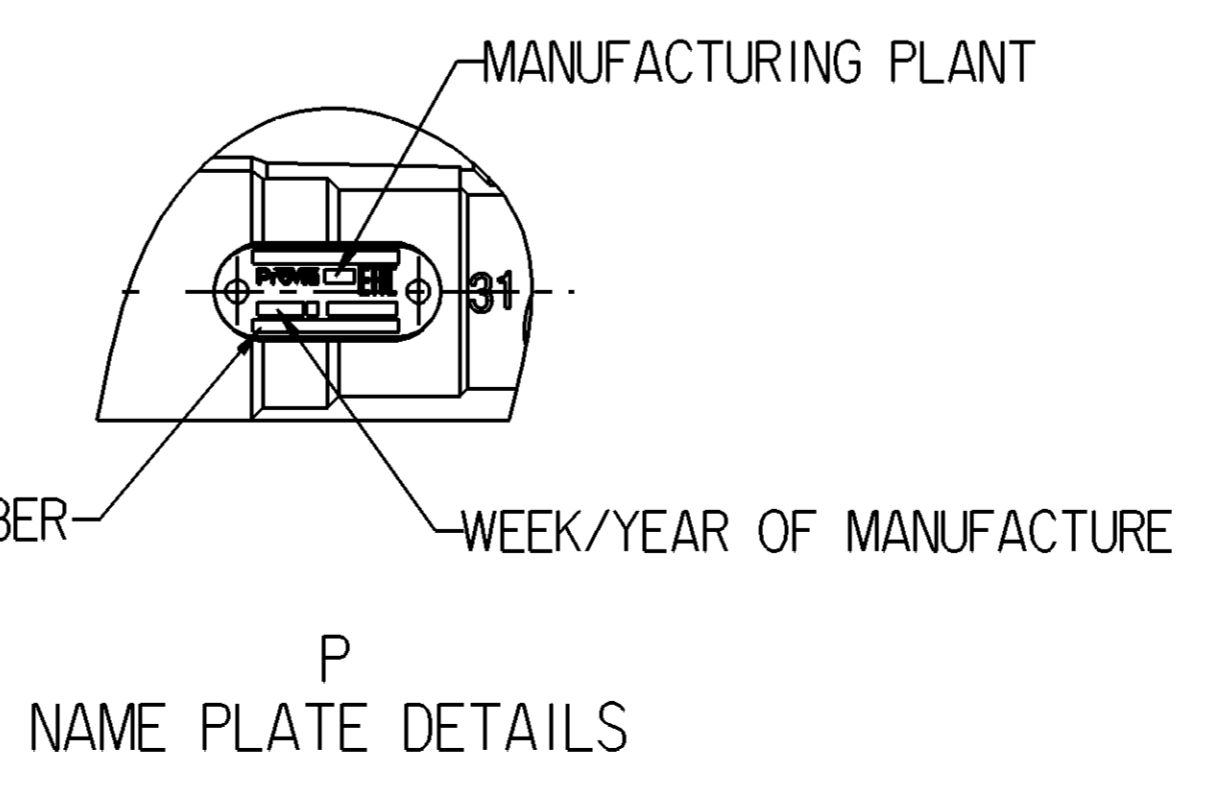
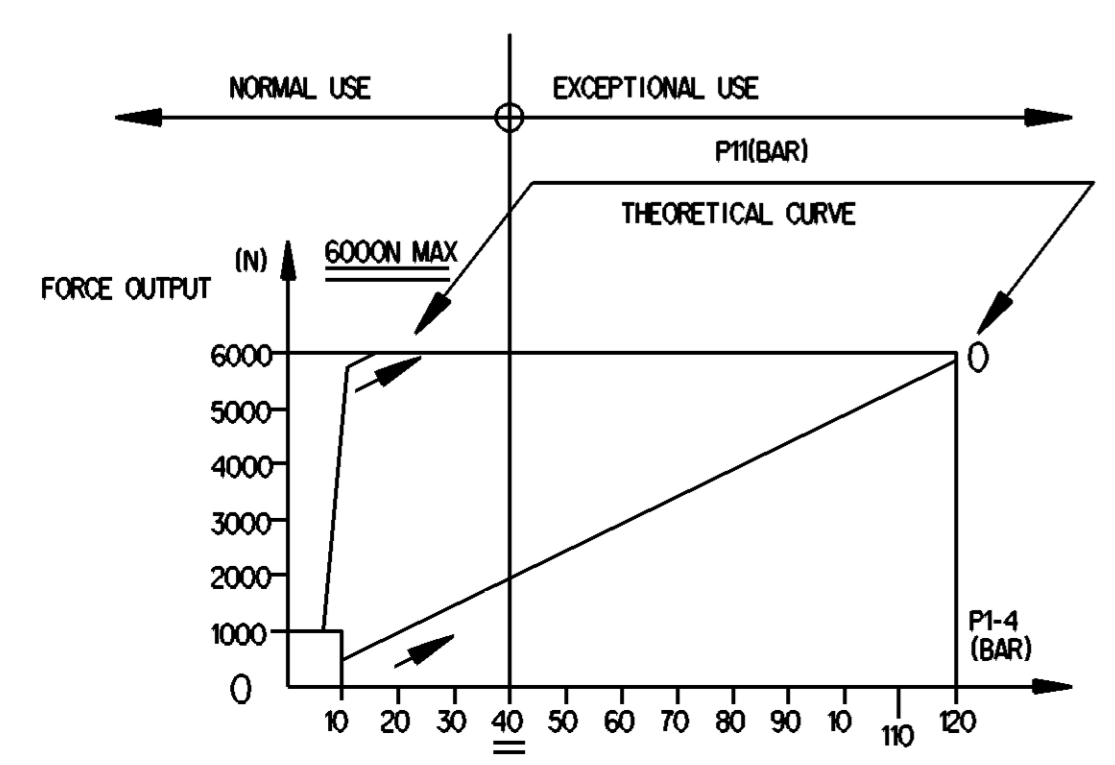
<-> SAFETY CHARACTERISTICS	0
<-> SIGNIFICANT CHARACTERISTICS	0



MARKING OF PORTS
 11-AIR INLET
 14-OIL INLET
 31-AIR EXHAUST
 32-BLEED SCREW

- NOTES
1. HYDRAULIC TANK DIA. : Ø22mm
 2. AIR TANK DIA. : Ø102mm
 3. HYDRAULIC WORKING PRESSURE : 4MPa
 4. HYDRAULIC WORKING PRESSURE MAX : 12MPa
 5. AIR WORKING PRESSURE MAX : 1MPa
 6. WORKING TEMPERATURE : -40°C ~ +80°C
 7. WORKING MEDIUM : BRAKE OIL , AIR

Ⓛ TORQUE : 25 Nm MAX



General Specifications: JED-334-1 - Size ISO 14405 LP		Copyright WABCO®	
Further Technical Data: PRO 411 000 0		Date: 2019-04-30	Signature: [Blank]
Doc. Code: 043		Sheet: 1 To 5	Brand: [Blank]
General Tolerances JED-261		2019-04-30 Shamugam S	
Range of Nominal Dimensions (± mm)		2019-05-10 Yerahachelvan	
Class	1) ≤ 50	> 50 ≤ 180	> 180 ≤ 400
Fine	0.5	1.0	1.5
Medium	1.0	2.0	3.0
Coarse	2.0	3.5	5.0
Tapped Holes acc.:		±3°	
1) Tolerance Class Applied Crossmarked		Mass: 2.3 kg	Scale: NTS
A 1 CREO		Size: CAD System	Material No.: [Blank]
Date of first issue: 2019-05-10		Doc. Code: Language: Sheet	
PRO 411 005 0		005 EN 1/1	
Ech. No.: Revision: Techn. Resp.: 5630_AM		Replacement for: [Blank]	

Non è permesso copiare o riprodurre questo documento, né utilizzare il contenuto a fini commerciali, senza permesso scritto dalla WABCO. Tutti i diritti sono riservati. Toute réimpression ou utilisation non autorisée sans la permission écrite de la WABCO est formellement interdite. Toute utilisation non autorisée sera considérée comme une violation des lois.