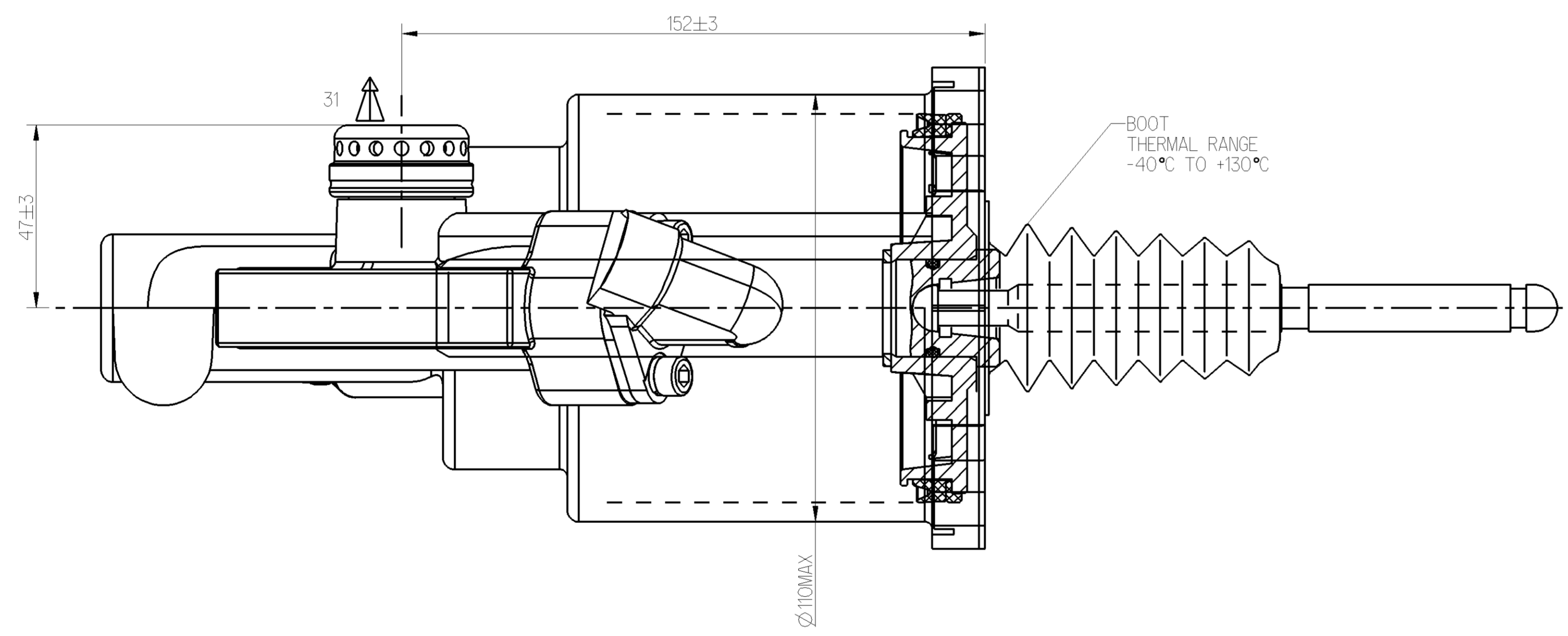
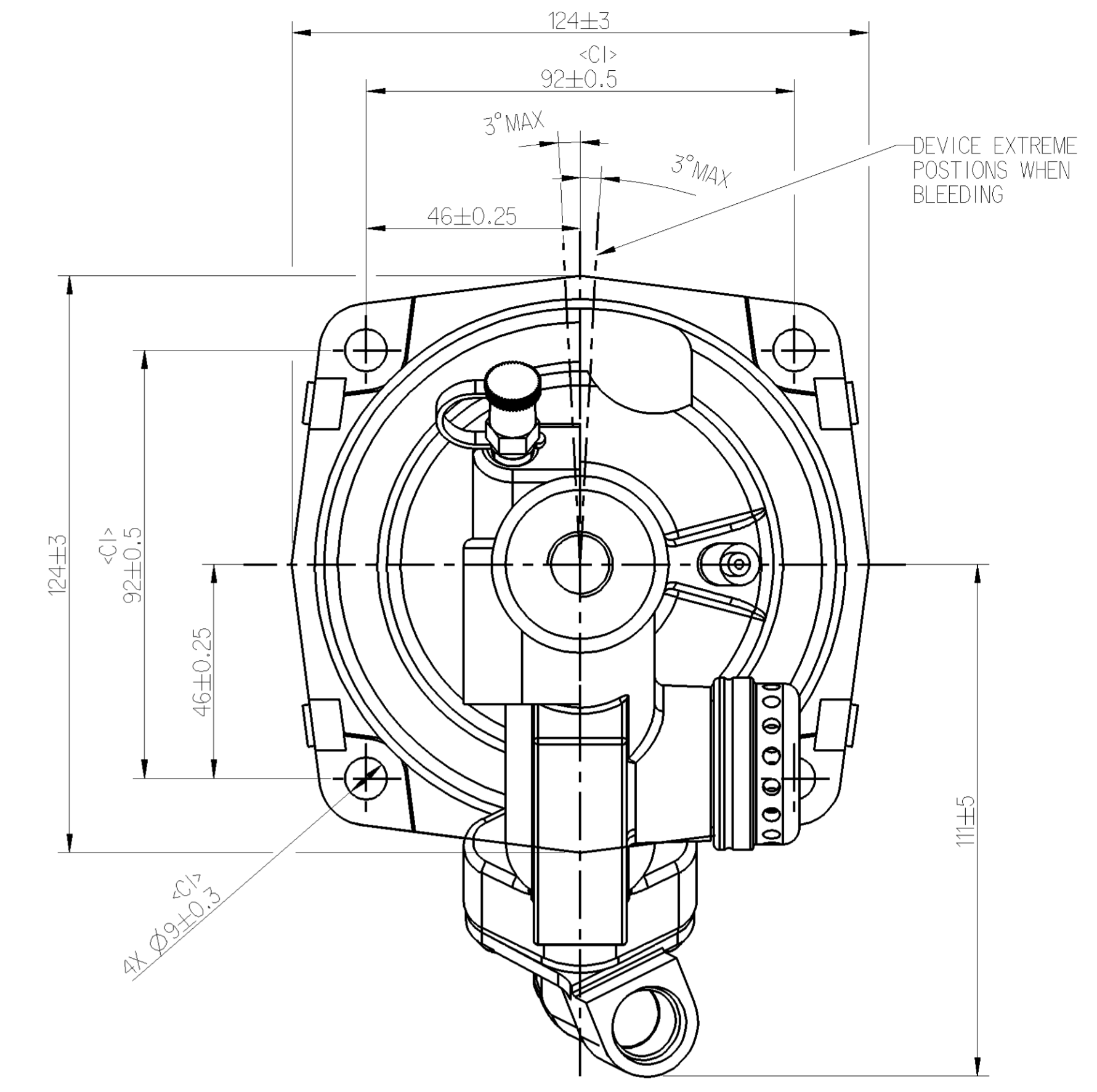
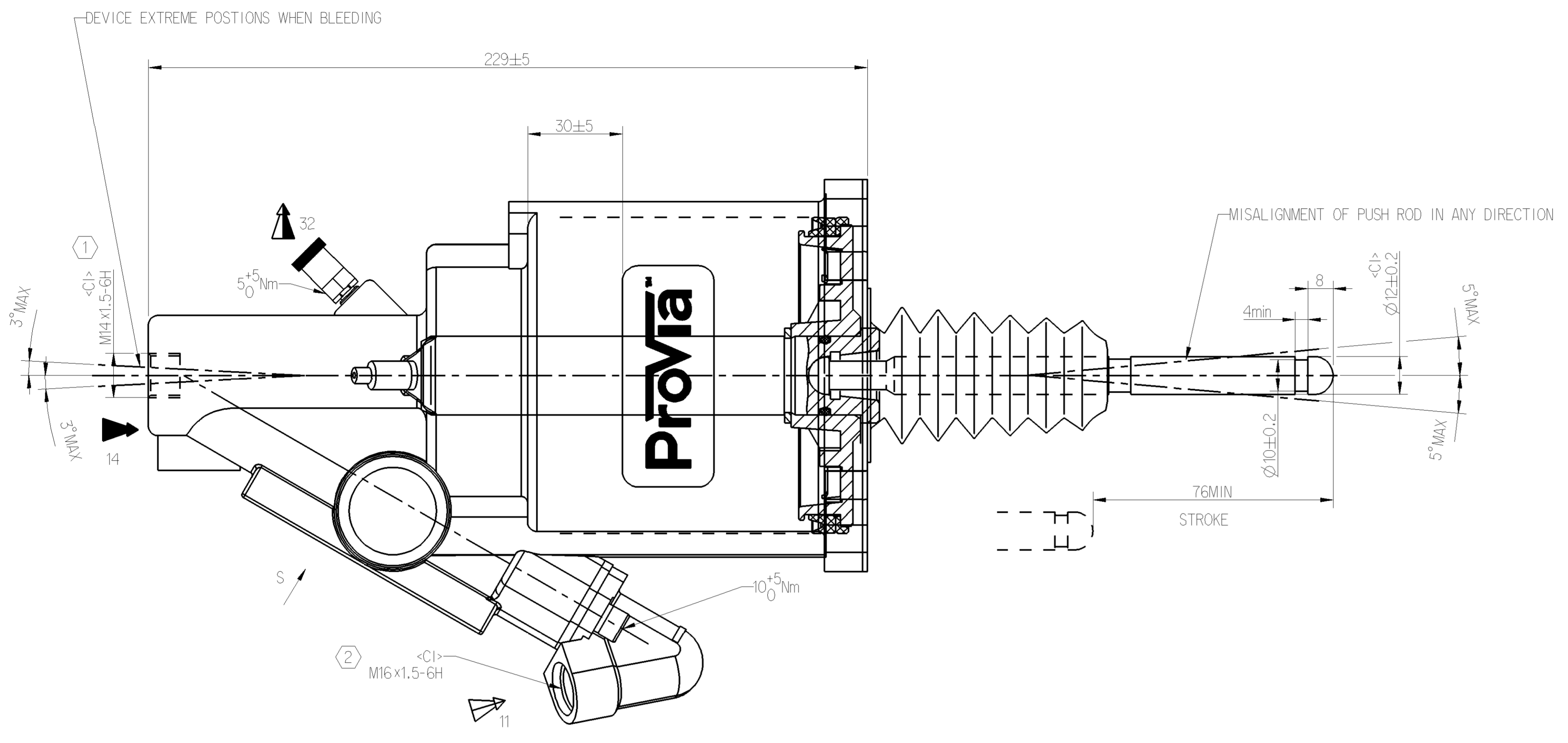


<P> SAFETY CHARACTERISTICS	0
<S> SIGNIFICANT CHARACTERISTICS	0
<CI> CUSTOMER INTERFACE	6

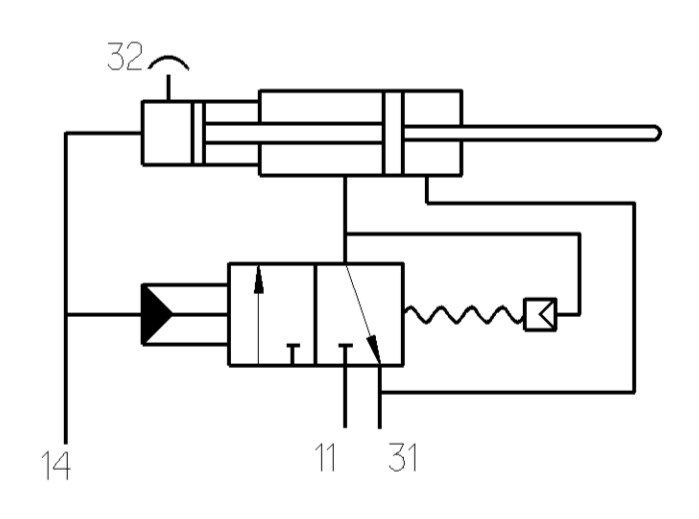


TECHNICAL INFORMATION:

1. HYDRAULIC TANK DIAMETER :  $\varnothing 25\text{mm}$
2. AIR TANK DIAMETER :  $\varnothing 100\text{mm}$
3. HYDRAULIC WORKING PRESSURE :  $4\text{MPa}$
4. HYDRAULIC WORKING PRESSURE :  $12\text{MPa MAX}$
5. AIR WORKING PRESSURE :  $1\text{MPa MAX}$
6. WORKING TEMPERATURE :  $-40^\circ\text{C TO } +80^\circ\text{C}$
7. MEDIUM : BRAKE OIL, AIR

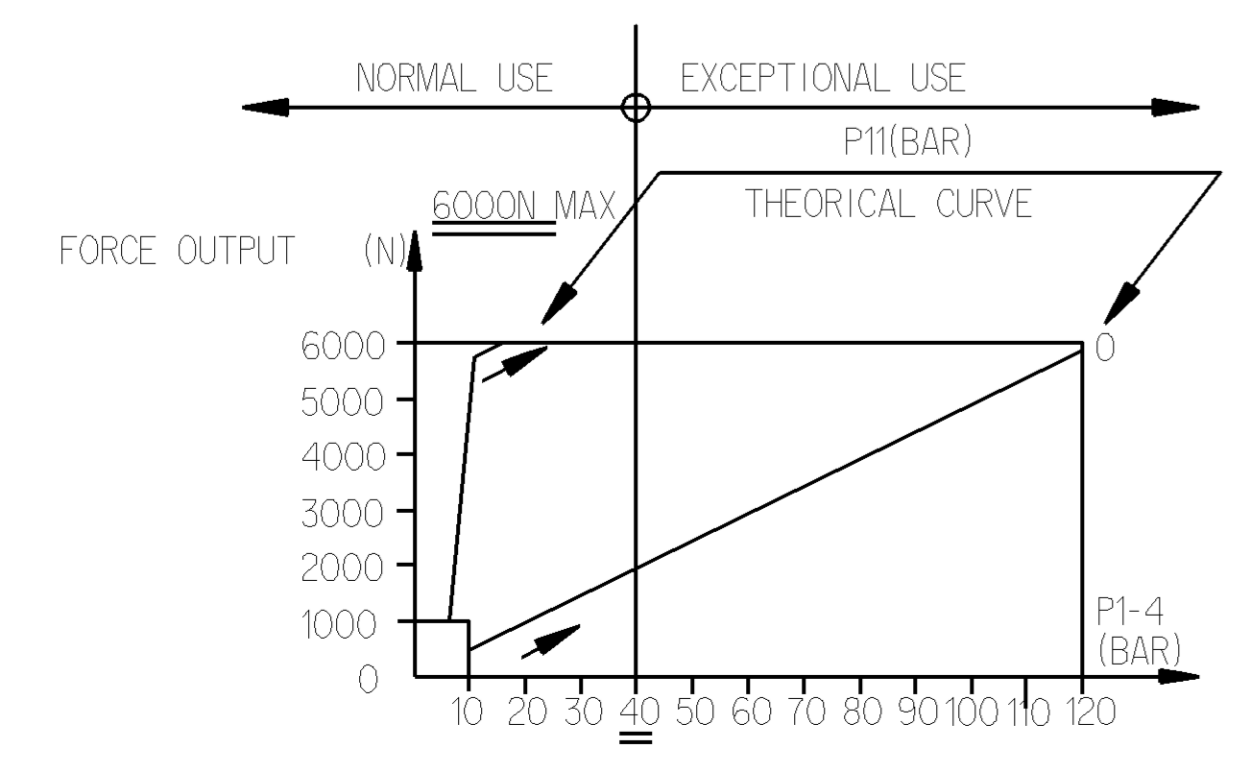
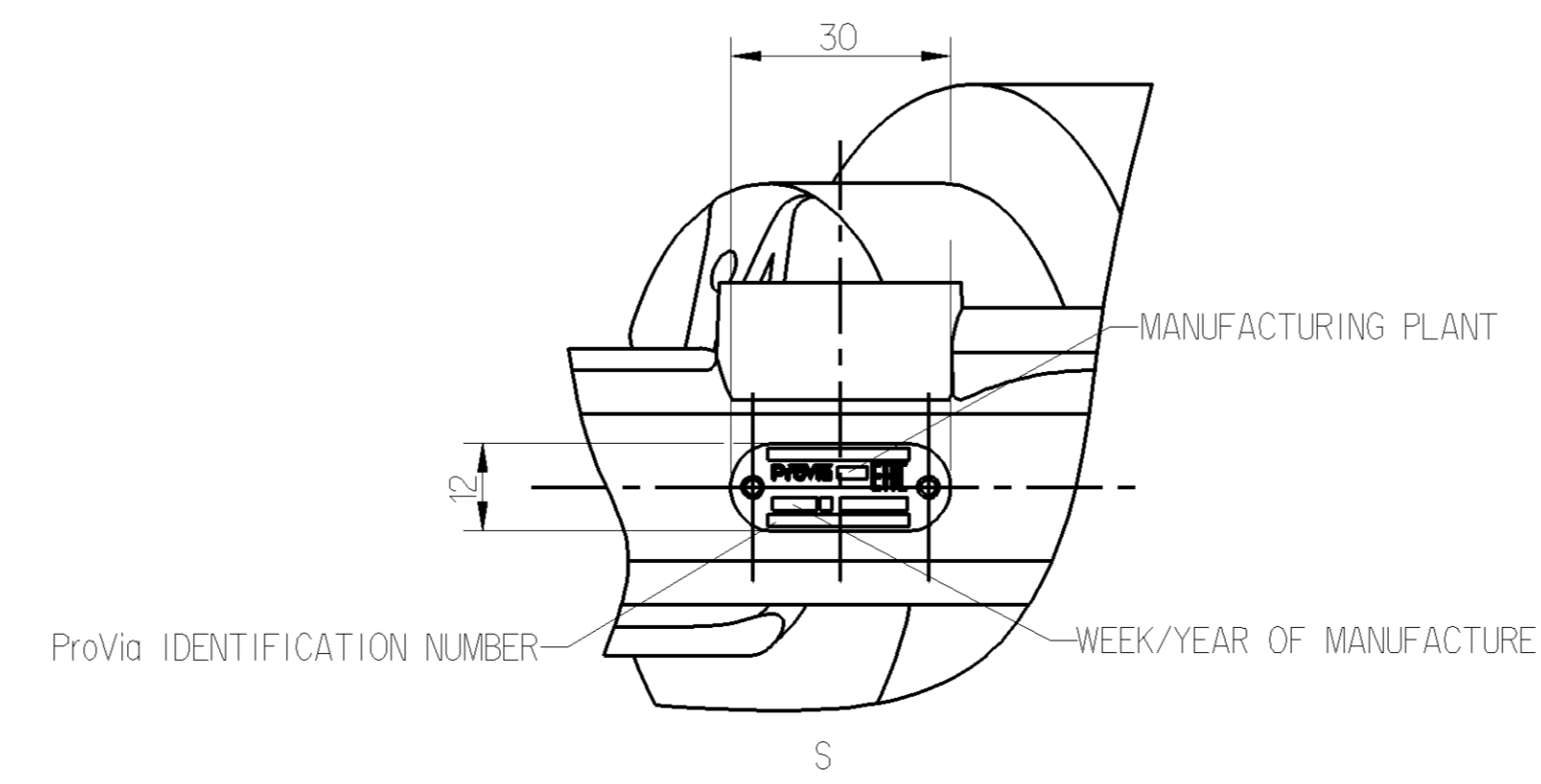
- ① TORQUE 25Nm MAX
- ② TORQUE 34Nm MAX

SCHEMATIC DIAGRAM



- MARKING OF PORTS  
 11-AIR INLET  
 14-OIL INLET  
 31-AIR EXHAUST  
 32-BLEED SCREW

NAME PLATE DETAILS



General Specifications: JED-334-1 - Size ISO 14405 LP		Copyright WABCO®		<b>ProVia</b>	
Further Technical Data: PRO 411 017 0		Date	Signature	CLUTCH SERVO	
Doc. Code: 035	Sheet: 1 To 5	2021-08-09	M.P.		
General Tolerances JED-261		Checked			
Range of Nominal Dimensions ( ± mm)		2021-08-10		Yerahachelvan	
		Expert			
		Thomas Blising			
Class	1)	Scale	Material No.	Date of first issue	2021-08-10
Fine	0.5 1.0 1.5 2.0	NTS	PRO 411 013 0	Doc.Code	005
Medium	1.0 2.0 3.0 4.0	±3°	005	Language	EN
Coarse	2.0 3.5 5.0 6.5		5630_AM	Sheet	1/1
Tapped Holes acc. -		Ech.No.		Replacement for	
1) Tolerance Class Applied Crossmarked		Revision			
		Techn. Resp.			
		5630_AM			

Non è permesso copiare o riprodurre questo documento, né utilizzare il contenuto in modo commerciale, senza permesso scritto dalla WABCO. È vietata espressamente la ristampa o l'uso non autorizzato. Toute réimpression ou utilisation non autorisée sans la permission écrite de la WABCO est formellement interdite. Toute utilisation commerciale sans la permission écrite de la WABCO est formellement interdite. All rights reserved. No part of this document may be reproduced, stored in a retrieval system, or transmitted in any form or by any means, electronic, mechanical, photocopying, recording, or by any information storage and retrieval system, without the prior written permission of WABCO. All rights reserved. No part of this document may be reproduced, stored in a retrieval system, or transmitted in any form or by any means, electronic, mechanical, photocopying, recording, or by any information storage and retrieval system, without the prior written permission of WABCO.