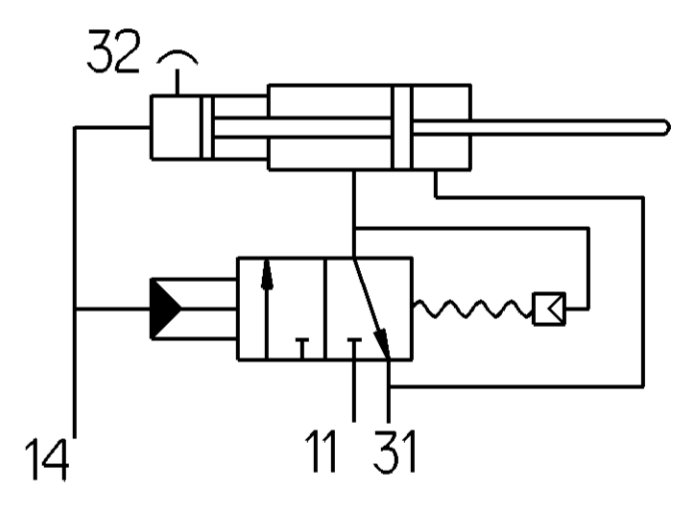


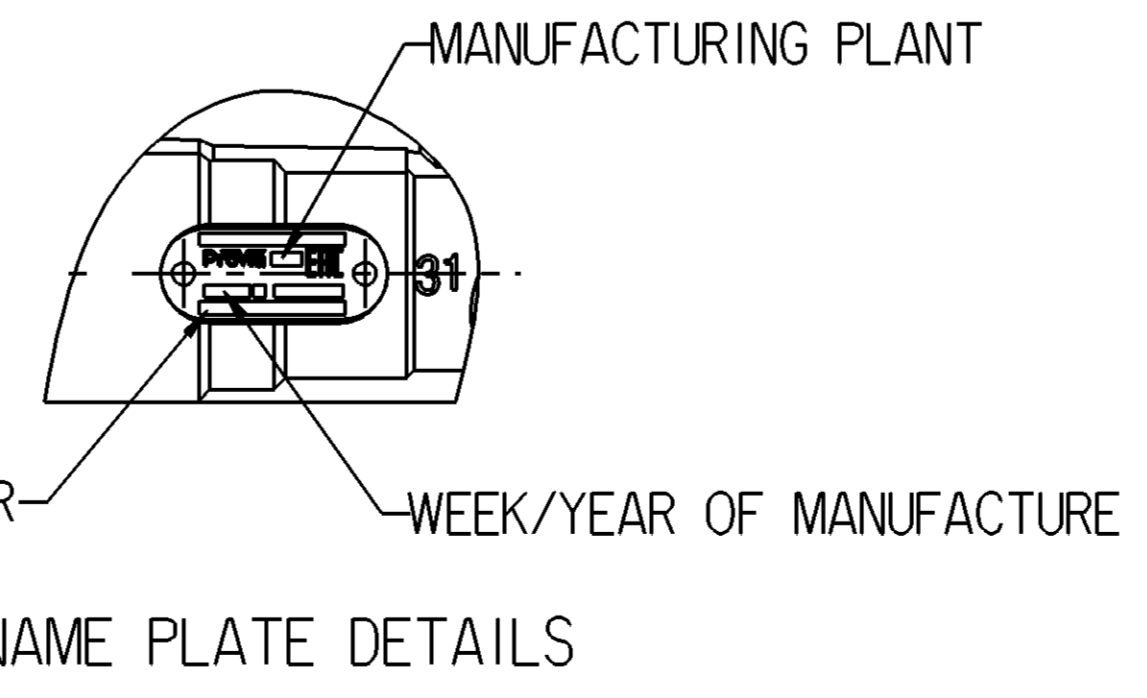
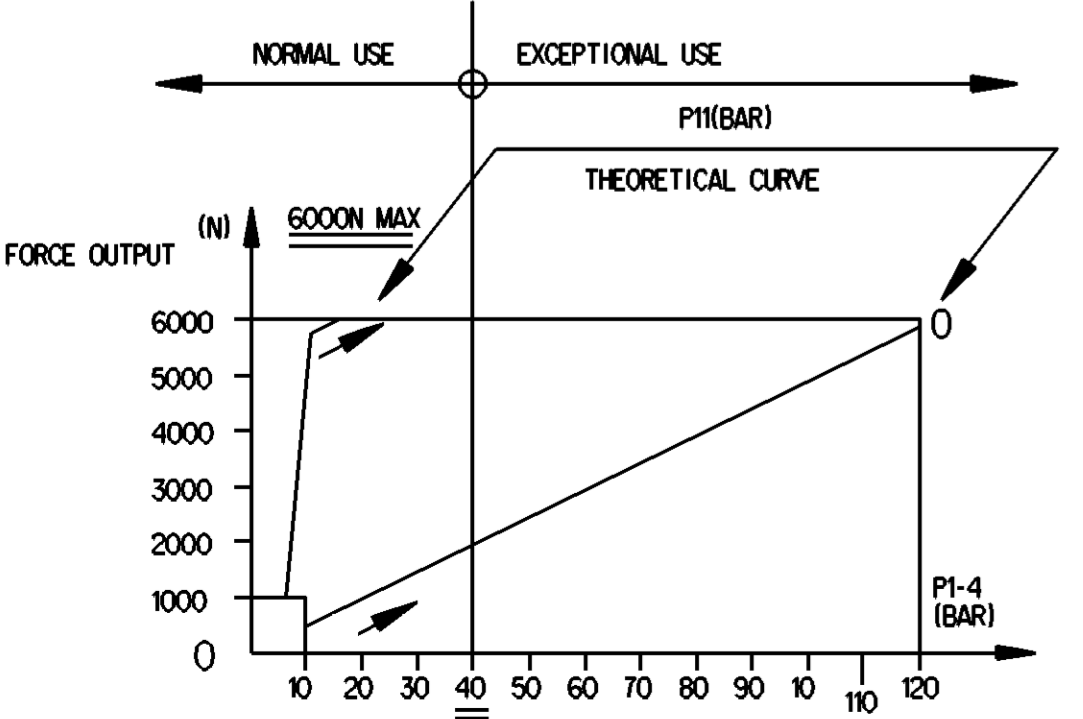
SCHEMATIC DIAGRAM



MARKING OF PORTS
11-AIR INLET
14-OIL INLET
31-AIR EXHAUST
32-BLEED SCREW

- NOTES
1. HYDRAULIC TANK DIA. : Ø22mm
 2. AIR TANK DIA. : Ø102mm
 3. HYDRAULIC WORKING PRESSURE : 4MPa
 4. HYDRAULIC WORKING PRESSURE MAX : 12MPa
 5. AIR WORKING PRESSURE MAX : 1MPa
 6. WORKING TEMPERATURE : -40°C ~ +80°C
 7. WORKING MEDIUM : BRAKE OIL , AIR

- ① TORQUE : 25 Nm MAX
② TORQUE : 34 Nm MAX



ProVia IDENTIFICATION NUMBER

General Specifications: JED-334-1 - Size ISO 14405 LP		Copyright WABCO®		ProVia	
Further Technical Data: PRO 411 020 0		Date: 2019-12-16	Drawn: Sharmayagam S	CLUTCH SERVO	
Doc. Code: 043		Sheet: 1 To 5	Checked: 2019-12-16	Expert: Yerahachelvan	
General Tolerances JED-261		Thomas Blasing		Material No.	
Range of Nominal Dimensions (± mm)		Mass		Date of first issue: 2019-05-14	
Class	1) ≤ 50	> 50	> 180	Doc. Code Language Sheet	
Fine	0.5	1.0	1.5	2.7 kg NTS	
Medium	1.0	2.0	3.0	PRO 411 020 0	
Coarse	2.0	3.5	5.0	005 EN 1/1	
Tapped Holes acc. -		Size CAD System		Revision Techn. Resp.	
1) Tolerance Class Applied Crossmarked		A 1 CREO		503356 1 A 5630_AM	

Non è permesso copiare o riprodurre questo documento, né utilizzare il contenuto a fini commerciali, senza permesso scritto dalla WABCO. È vietata espressamente la ristampa o l'uso non autorizzato. Toute réimpression ou utilisation non autorisée sans la permission écrite de la WABCO est formellement interdite. Toute utilisation non autorisée sera considérée comme acte de contrefaçon et sera poursuivie en justice.