

MARKING OF PORTS
 11-AIR INLET
 14-OIL INLET
 31-AIR EXHAUST
 32-BLEED SCREW

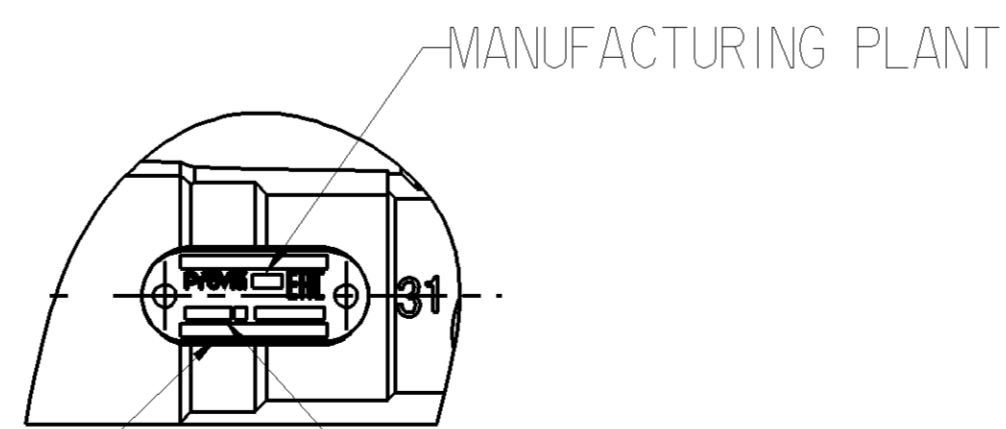
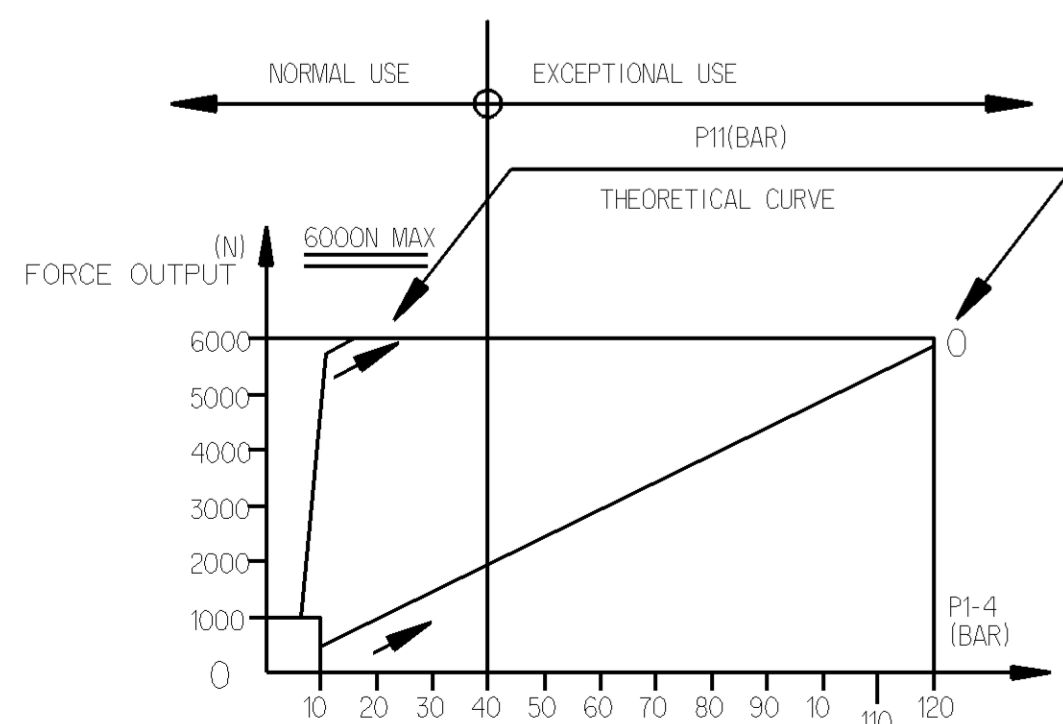
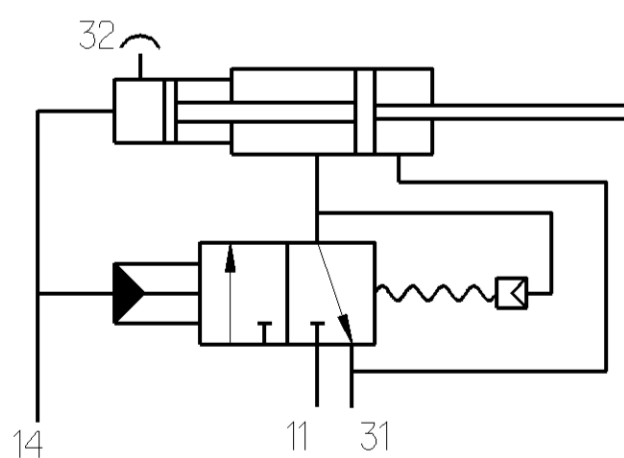
NOTES

1. HYDRAULIC TANK DIA. : Ø22mm
2. AIR TANK DIA. : Ø102mm
3. HYDRAULIC WORKING PRESSURE : 4MPa
4. HYDRAULIC WORKING PRESSURE MAX : 12MPa
5. AIR WORKING PRESSURE MAX : 1MPa
6. WORKING TEMPERATURE : -40°C ~ +80°C
7. WORKING MEDIUM : BRAKE OIL , AIR

① TORQUE : 25 Nm MAX

② TORQUE : 34 Nm MAX

SCHEMATIC DIAGRAM



ProVia IDENTIFICATION NUMBER

WEEK/YEAR OF MANUFACTURE

NAME PLATE DETAILS

General Specifications: JED-334-1 - Size ISO 14405 LP		Copyright WABCO®	
Further Technical Data: PRO 411 000 0		Date	Signature
Doc. Code: 043	Sheet: 1 To 5	2019-12-16	Shamugam S
General Tolerances JED-261		Checks	
Range of Nominal Dimensions (± mm)		2019-12-16	
Class	1) ≤ 50 > 50 > 180 > 180 > 400 > 400	Expert	
Fine	0.5 1.0 1.5 2.0	Thomas Blasing	
Medium	1.0 2.0 3.0 4.0	Material No.	
Coarse	2.0 3.5 5.0 6.5	2.7	
Tapped Holes acc. -		Scale	
1) Tolerance Class Applied Crossmarked		NTS	
		Size CAD System	
		PRO 411 024 0	
		Date of first issue: 2019-05-14	
		Doc. Code Language Sheet	
		005 EN 1/1	
		Revision Techn. Resp.	
		1 A 5630_AM	
		Replacement for	