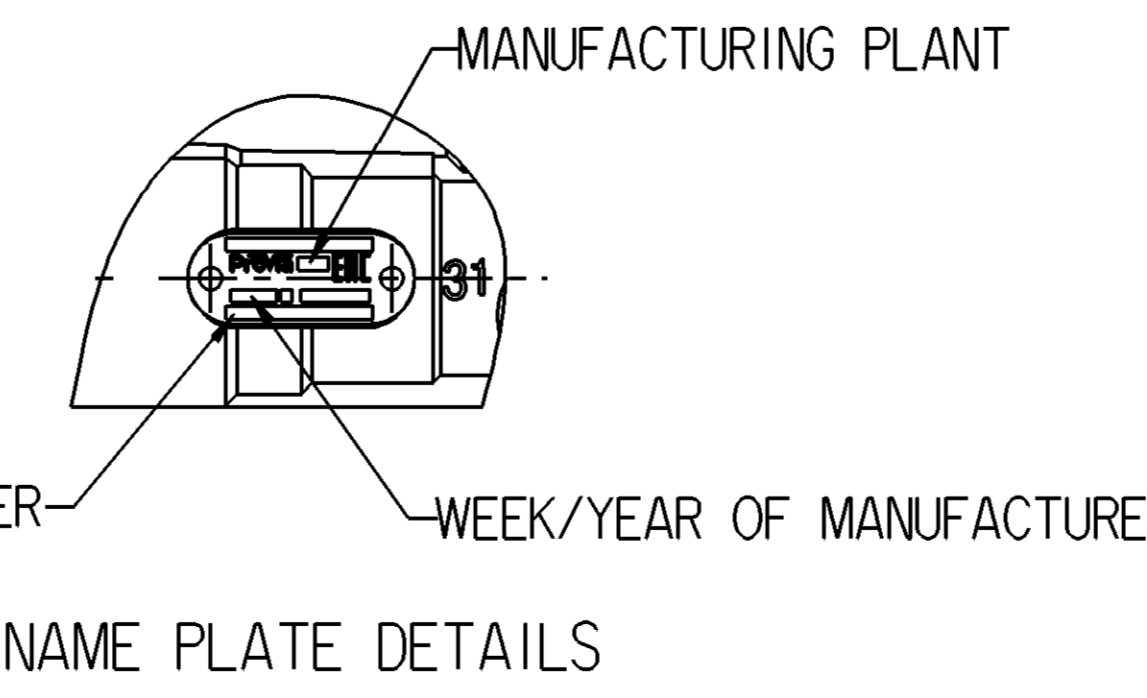
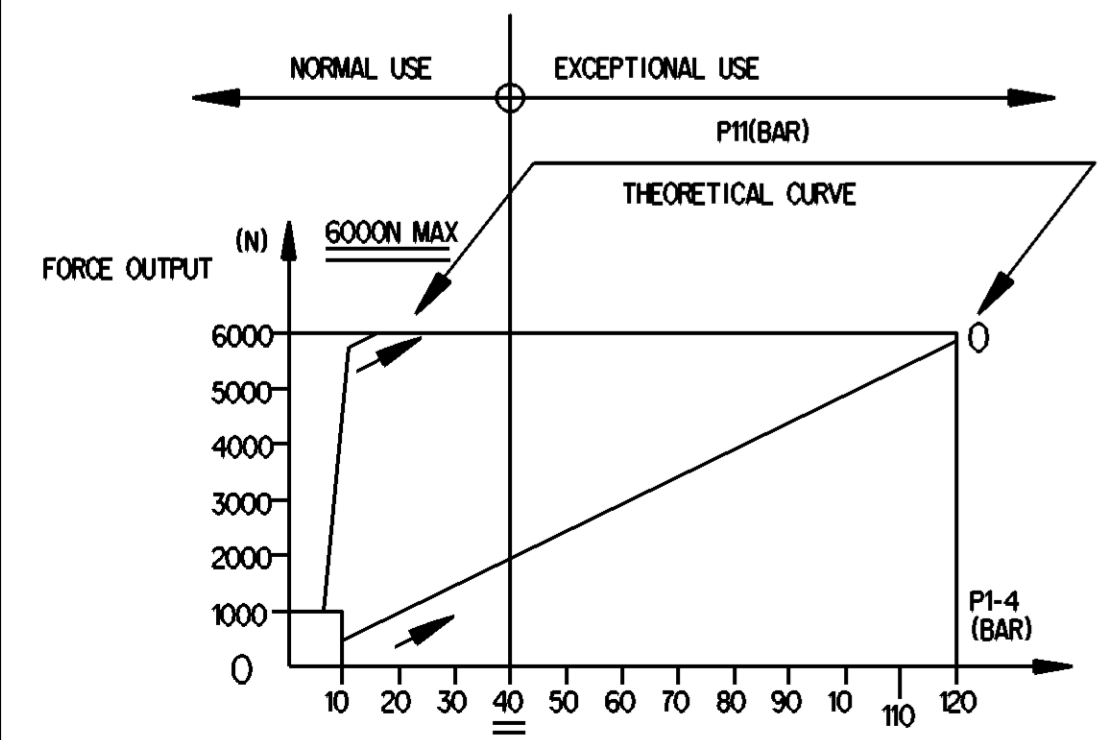


**MARKING OF PORTS**  
 11-AIR INLET  
 14-OIL INLET  
 31-AIR EXHAUST  
 32-BLEED SCREW

- NOTES**
- HYDRAULIC TANK DIA. : Ø25mm
  - AIR TANK DIA. : Ø102mm
  - HYDRAULIC WORKING PRESSURE : 4MPa
  - HYDRAULIC WORKING PRESSURE MAX : 12MPa
  - AIR WORKING PRESSURE MAX : 1MPa
  - WORKING TEMPERATURE : -40°C ~ +80°C
  - WORKING MEDIUM : BRAKE OIL , AIR

- ① TORQUE : 25 Nm MAX  
 ② TORQUE : 34 Nm MAX



ProVia IDENTIFICATION NUMBER

General Specifications: JED-334-1 - Size ISO 14405 LP		Copyright WABCO®	
Further Technical Data: PRO 411 026 0		Date	Signature
Doc. Code: 043	Sheet: 1 To 5	2020-01-08	Sharmugam S
General Tolerances JED-261		Checks	
Range of Nominal Dimensions ( ± mm)		2020-01-08 Yerahachelvan	
Class	1) ≤ 50	> 50	> 180
	≤ 180	≤ 400	> 400
Fine	0.5	1.0	1.5
Medium	1.0	2.0	3.0
Coarse	2.0	3.5	5.0
			±3°
Mass	2.7	Scale	NTS
Size	CAD System	Material No.	
Tapped Holes acc. -		PRO 411 026 0	
1) Tolerance Class Applied Crossmarked		EDN-No.	Revision
		503492	1 A
		Techn. Resp.	5630_AM
		Date of first issue: 2019-05-14	
		Doc.Code	Language
		005	EN
		Sheet 1/1	

Non è permesso copiare o riprodurre questo documento, né utilizzare il contenuto a fini commerciali, senza permesso scritto dalla WABCO. È vietata espressamente la ristampa o l'uso non autorizzato. Toute réimpression ou utilisation non autorisée sans la permission écrite de la WABCO est formellement interdite. Toute utilisation non autorisée sera considérée comme acte de contrefaçon et sera poursuivie en justice.