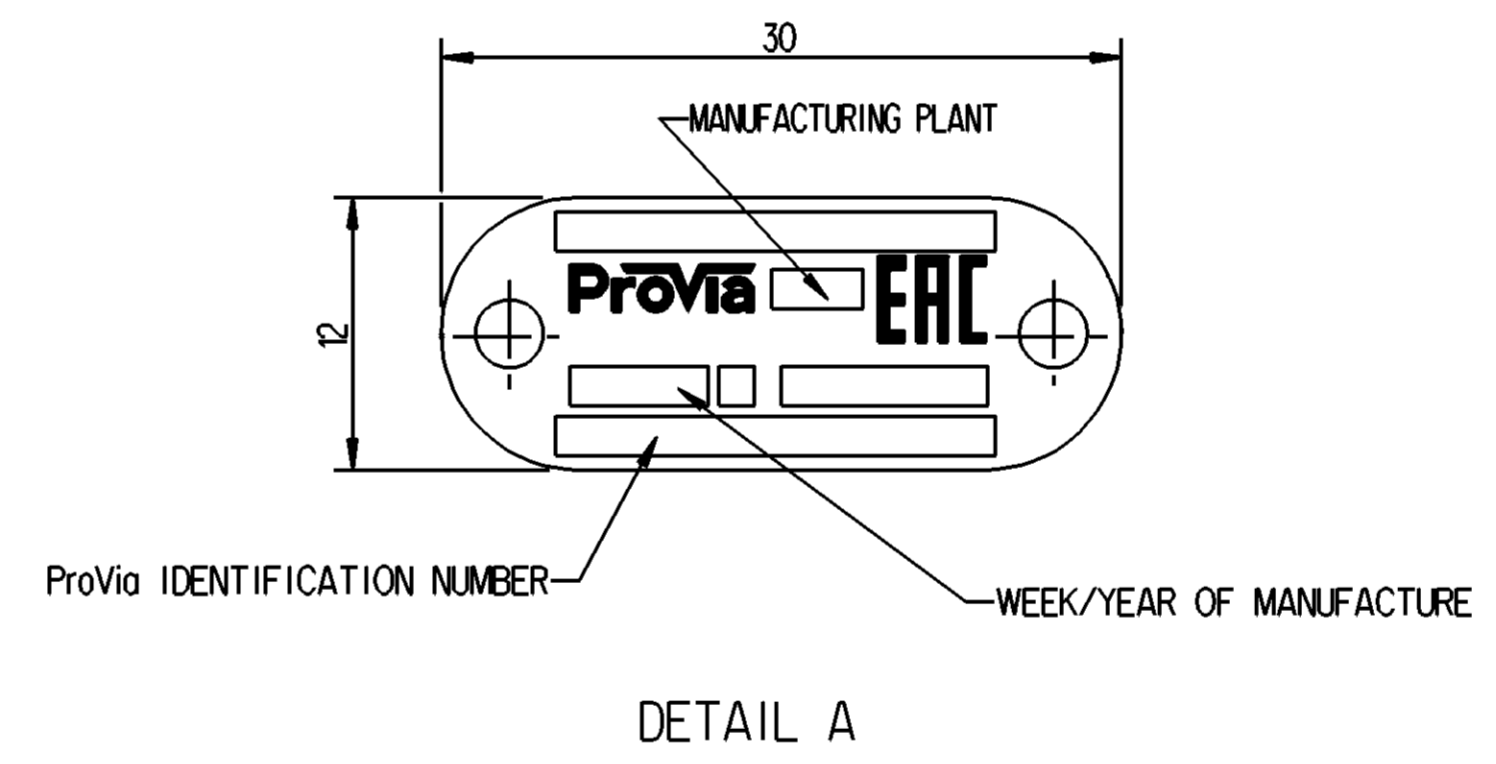
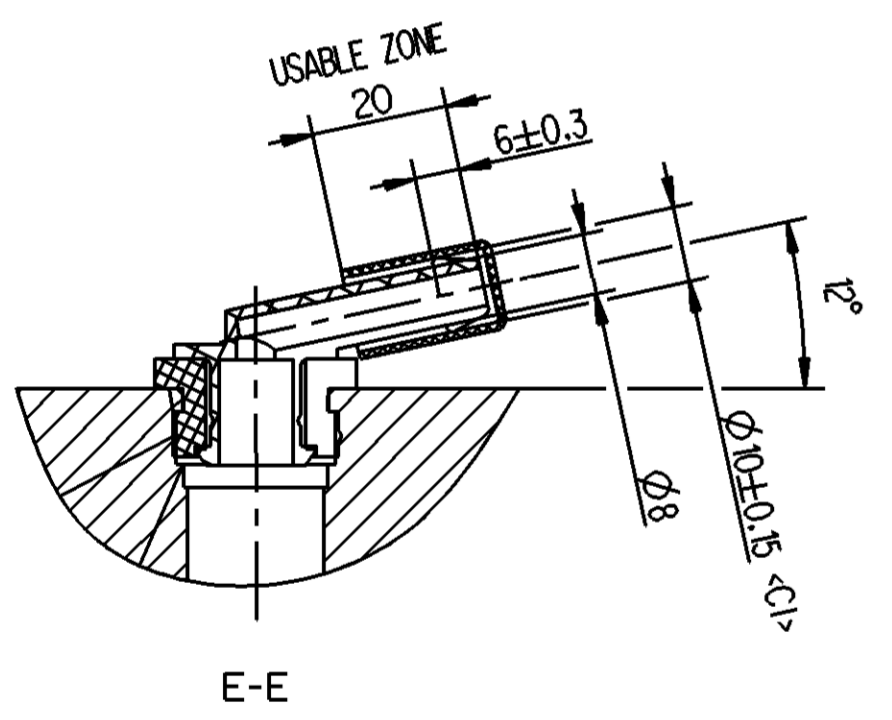
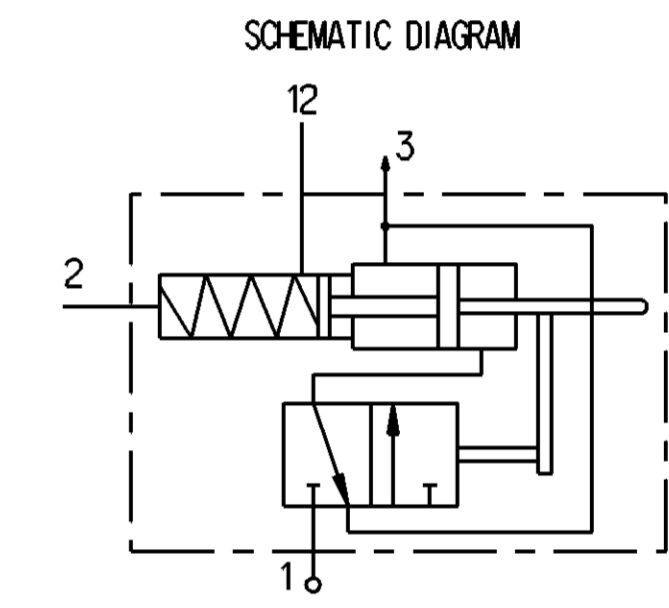
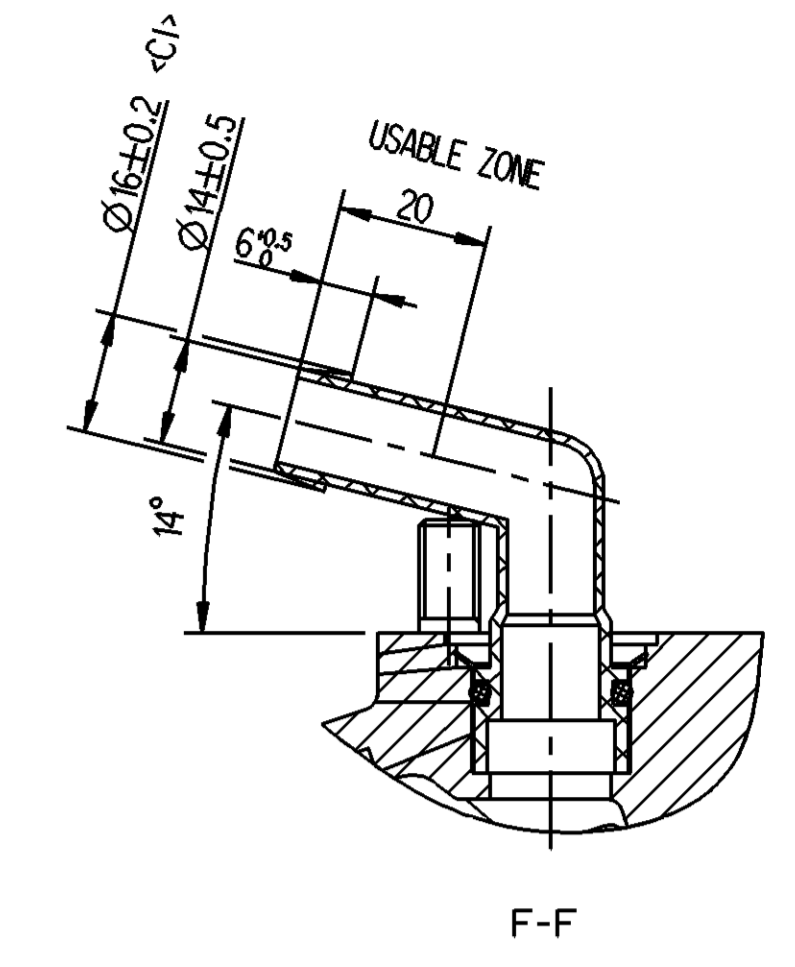
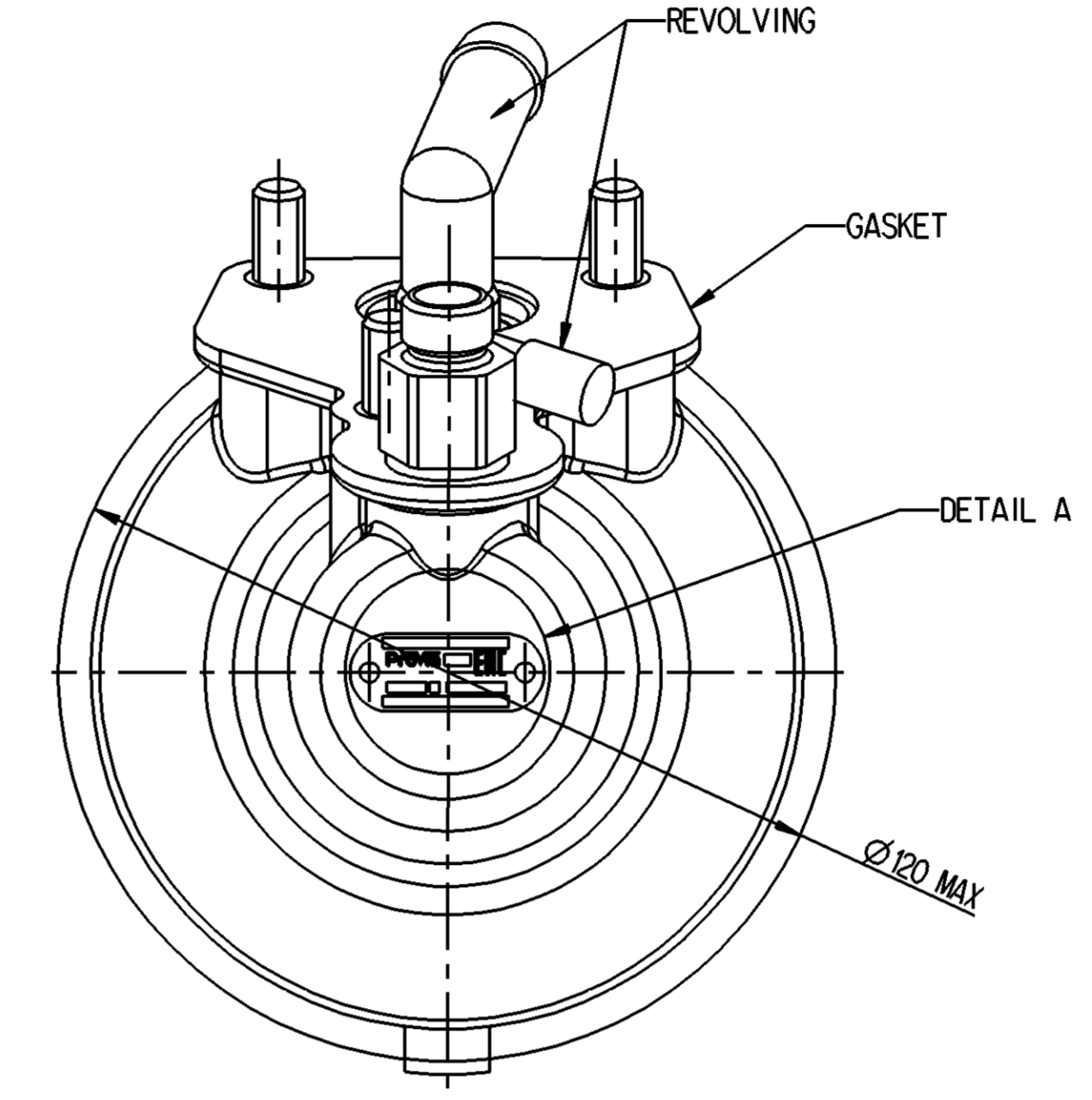
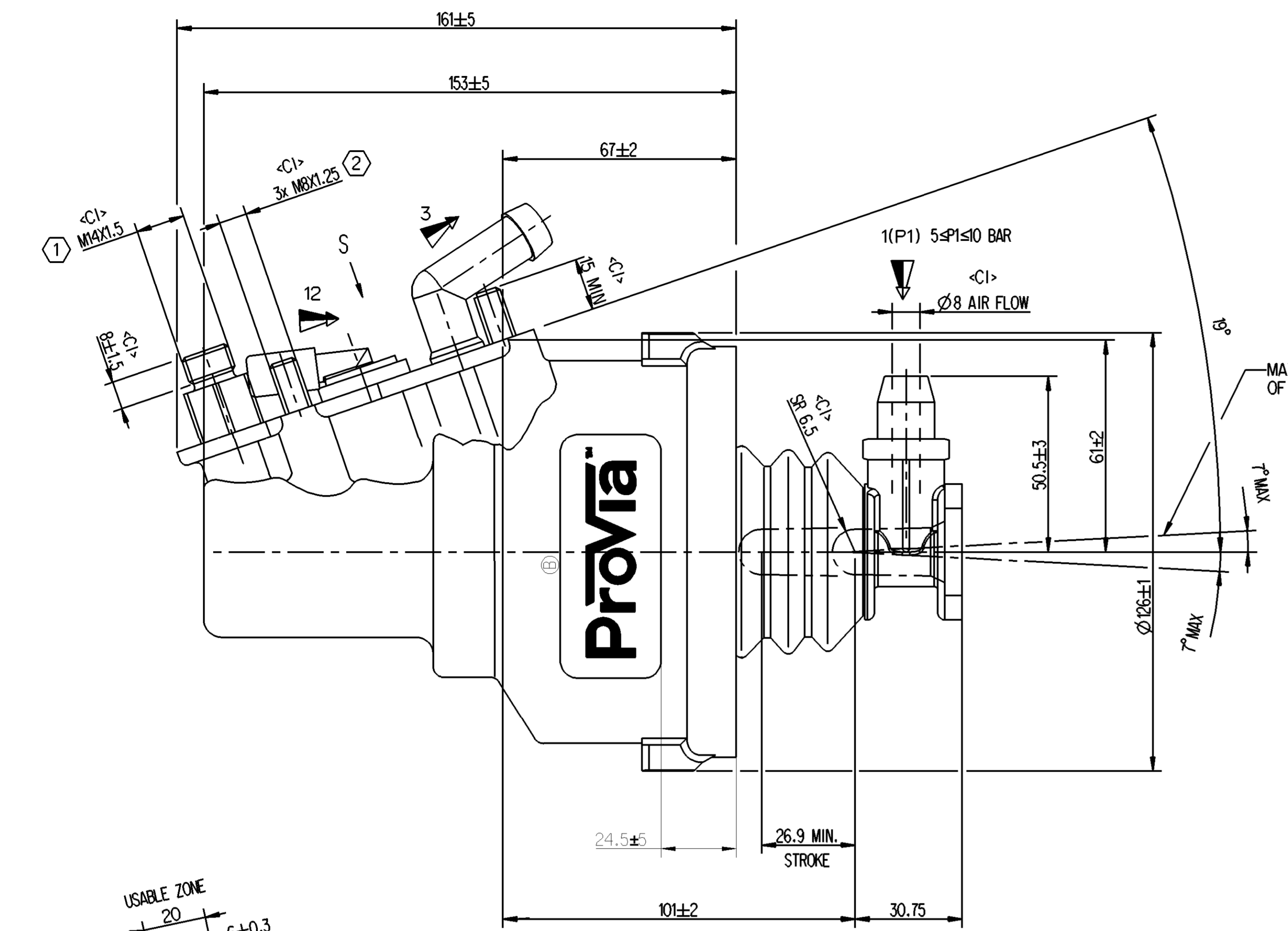


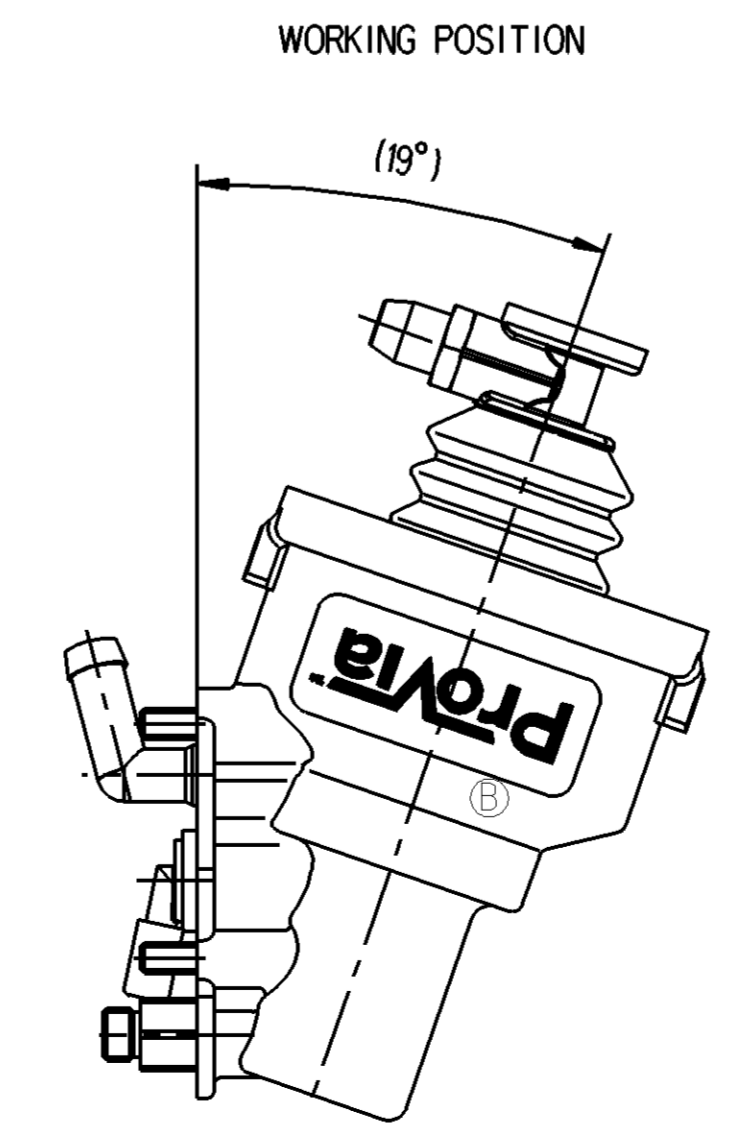
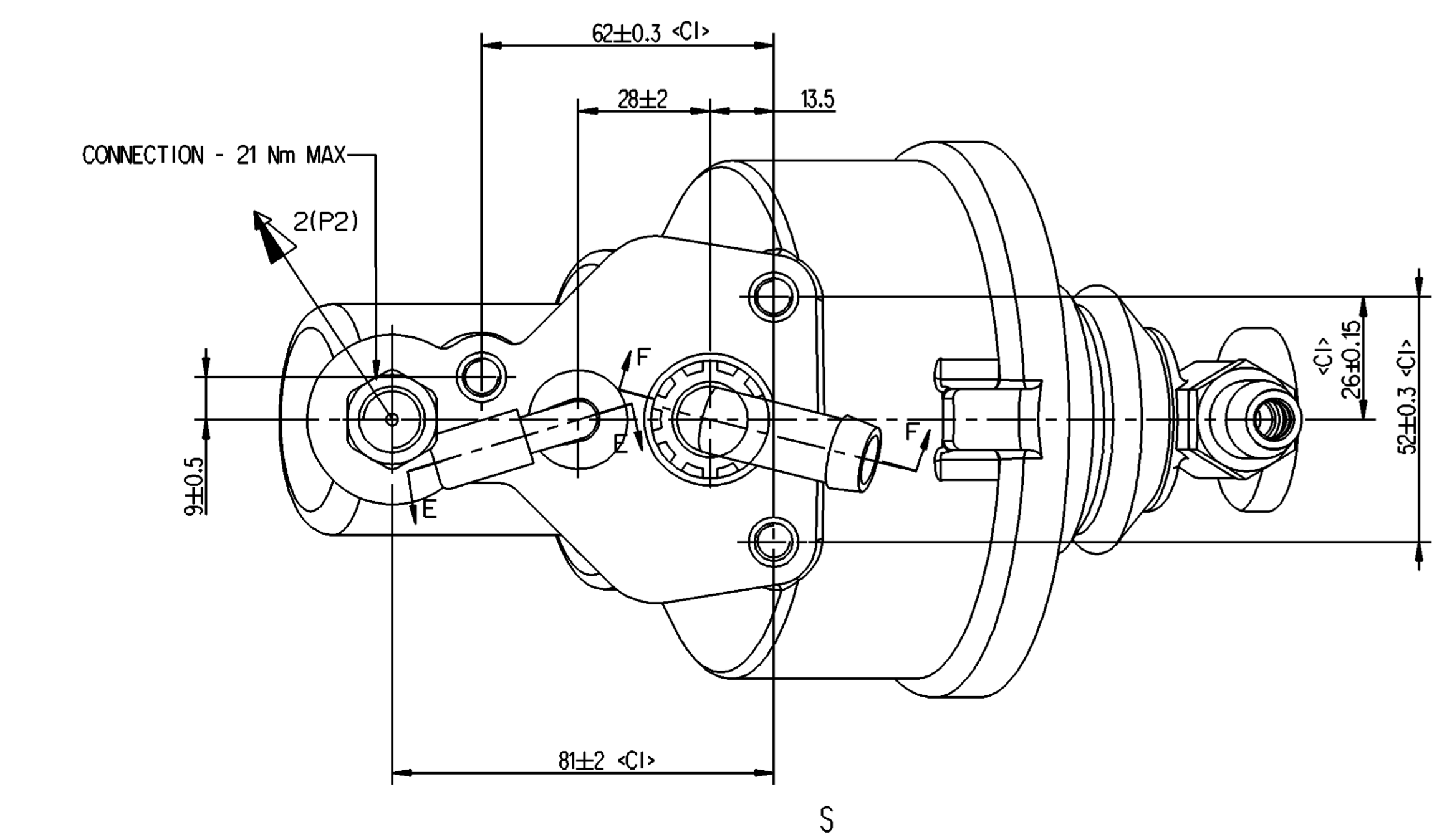
<P> SAFETY CHARACTERISTICS	0
<S> SIGNIFICANT CHARACTERISTICS	0
<CI> CUSTOMER INTERFACE	12



MARKING OF PORTS
 1-AIR SUPPLY
 12-OIL INLET
 2-DELIVERY
 3-AIR EXHAUST

NOTE :
 1. HYDRAULIC TANK: 38.1mm;
 2. AIR TANK: 100mm;
 3. AIR SUPPLY PRESSURE: 0.4MPa≤P1≤1MPa
 4. DELIVERED HYDRAULIC PRESSURE: 2.5MPa≤P1≤6.4MPa
 5. AIR WORKING PRESSURE MAX: 1MPa;
 6. WORKING TEMPERATURE: -30° TO +80°C;
 7. WORKING STROKE MIN.: 26.9mm;
 8. MEDIUM : BRAKE OIL, AIR

- ① TORQUE 25Nm MAX
- ② TORQUE 15Nm MAX



General Specifications: JED-334-1 - Size ISO 14405 LP		Copyright WABCO®		
Further Technical Data: PRO 411 300 O		Date: 2020-09-09	Signature: M.P.	
Doc. Code: 035	Sheet: 1 To 5	Checked: Thomas Bilising	Expert: Thomas Bilising	
General Tolerances JED-261		Material No. PRO 411 300 O		
Range of Nominal Dimensions (± mm)		Mass: 1.71 kg	Scale: NTS	
Class	1) ≤ 50	2) > 50 & ≤ 180	3) > 180 & ≤ 400	4) > 400
Fine	0.5	1.0	1.5	2.0
Medium	1.0	2.0	3.0	4.0
Coarse	2.0	3.5	5.0	6.5
Tapped Holes acc. -		Size: CAD System	Date of first issue: 2020-01-13	
1) Tolerance Class Applied Crossmarked		Revision: 2x B	Doc. Code: 005	
A 1 CREO		Techn. Resp.:	Language: EN	
		505667	Sheet: 1/1	

Non è permesso copiare o riprodurre questo documento, né utilizzare il contenuto a fini di lucro o per la produzione di altri documenti. È vietata espressamente la ristampa o l'uso non autorizzato. Tutti i diritti sono riservati. © WABCO. Copied by this document and giving it to others and the use or communication of the contents thereof, are prohibited without express consent. All rights reserved. No part of this document may be reproduced or transmitted in any form or by any means, electronic or mechanical, including photocopying, recording, or by any information storage and retrieval system.