

PROVIA  
EAL

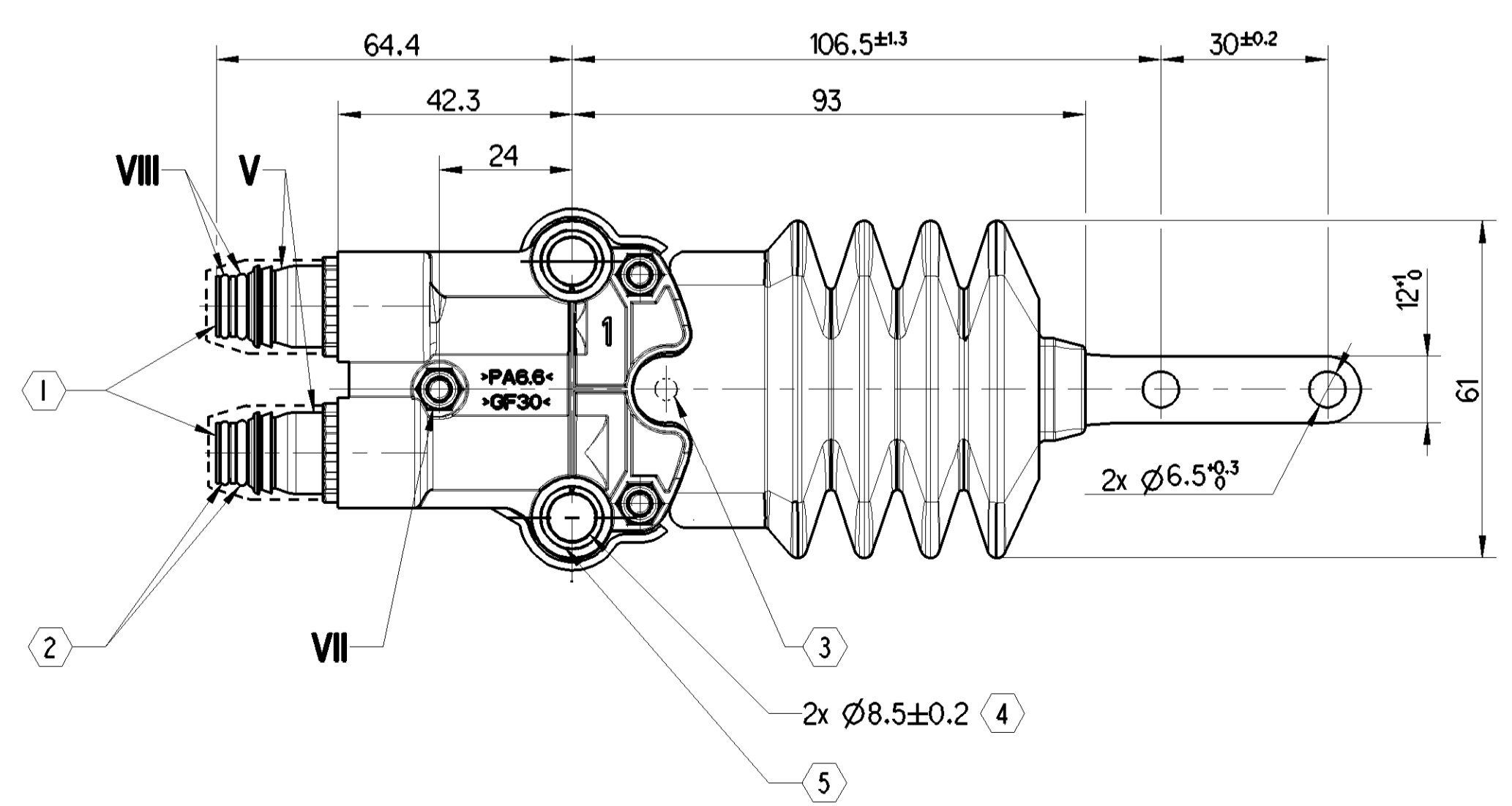
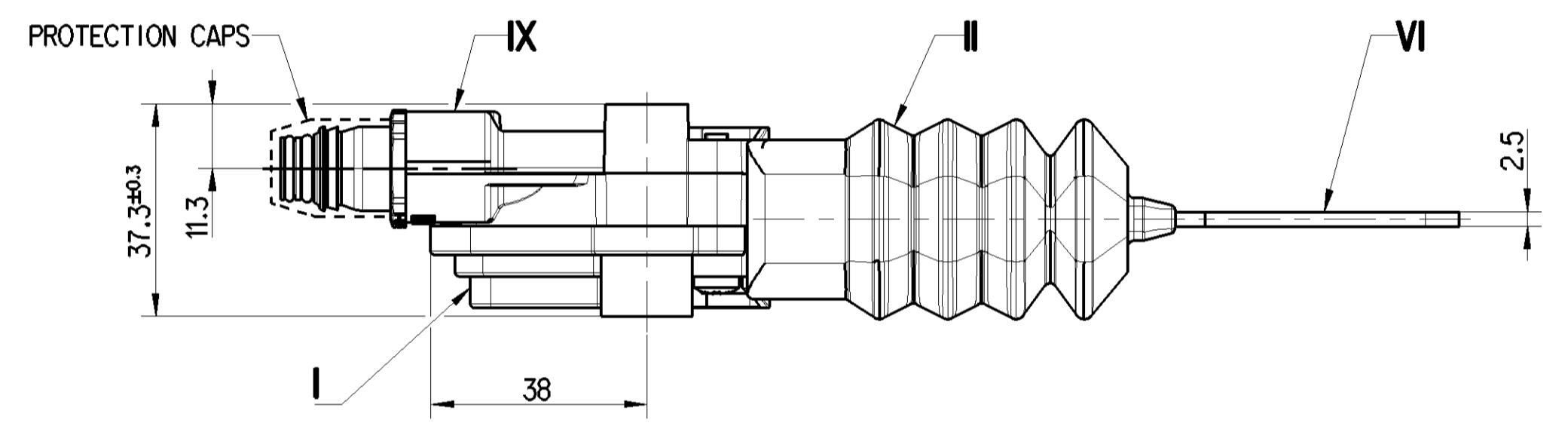
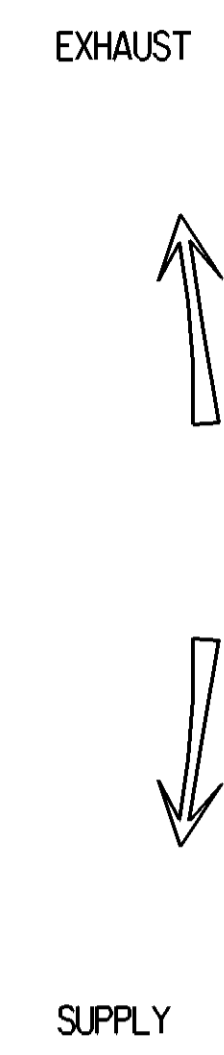
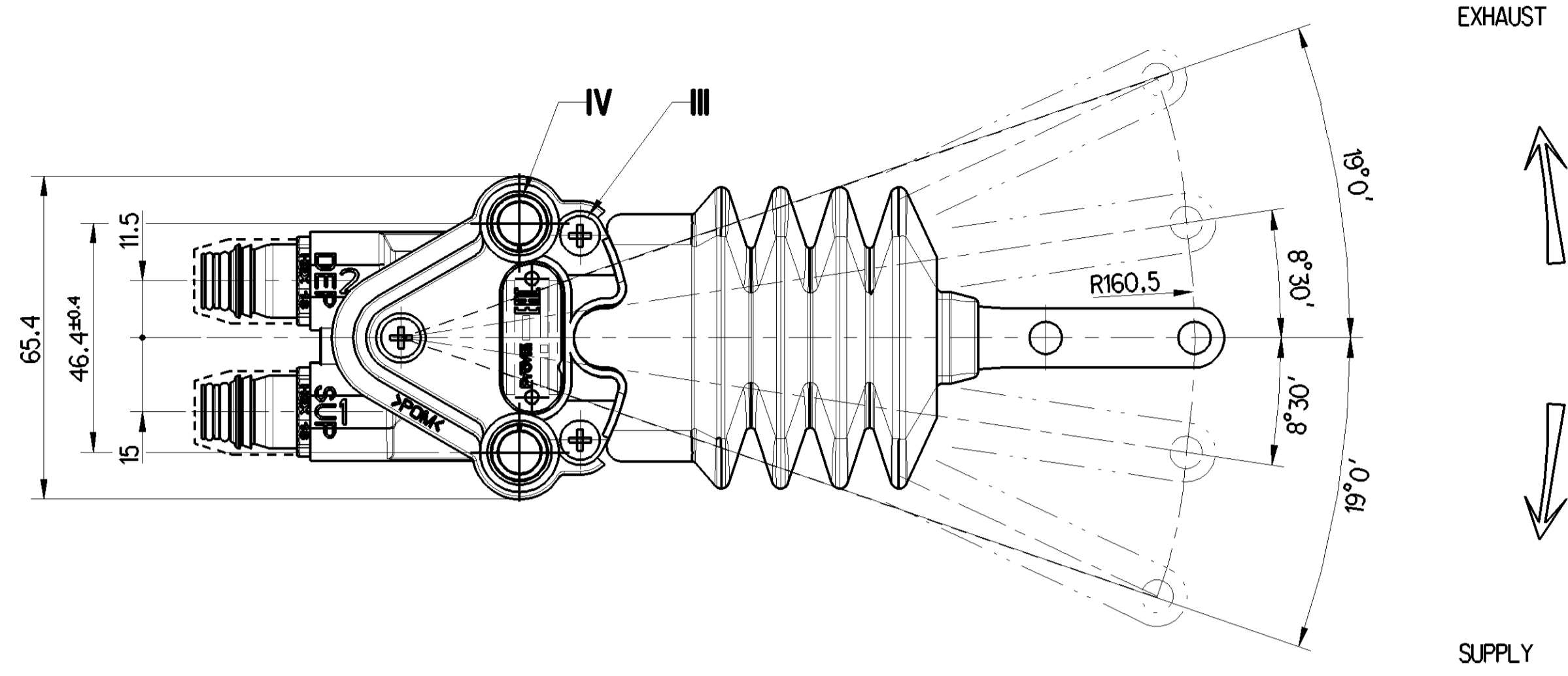
PRODUCTION RESPONSIBILITY INDEX (PRI)

COUNTRY OF ORIGIN

WEEK / YEAR OF MANUFACTURE

NAME PLATE DETAILS 2:1

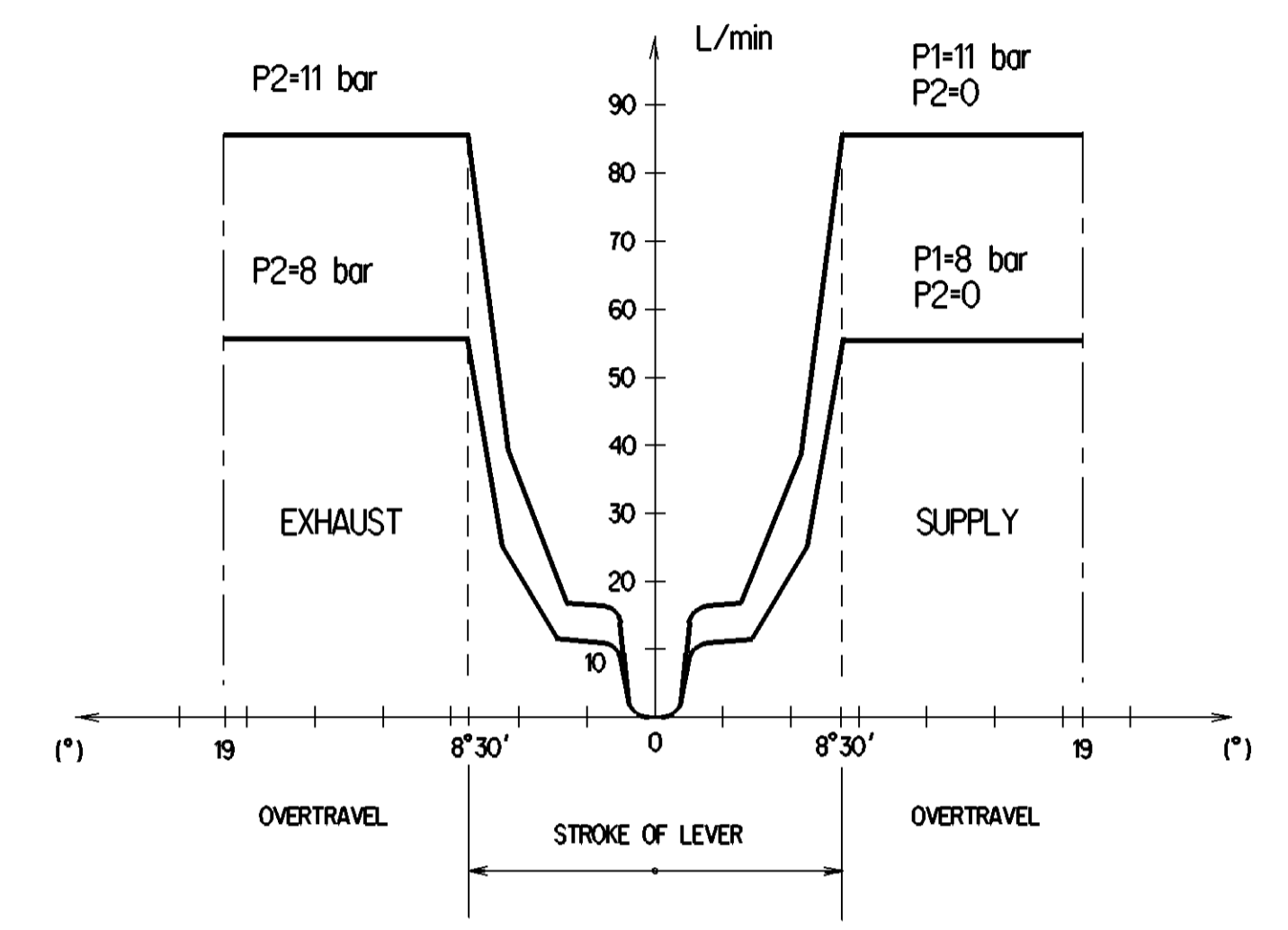
ProVia IDENTIFICATION NUMBER



|      | MATERIAL          | SURFACE PROTECTION |
|------|-------------------|--------------------|
| I    | POM               |                    |
| II   | EPDM              |                    |
| III  | STEEL             | Zn                 |
| IV   | STEEL             | Zn                 |
| V    | COMPOSITE PLASTIC |                    |
| VI   | STEEL             | Zn                 |
| VII  | STEEL             | Zn                 |
| VIII | EPDM              |                    |
| IX   | PA 6.6 30GF       |                    |

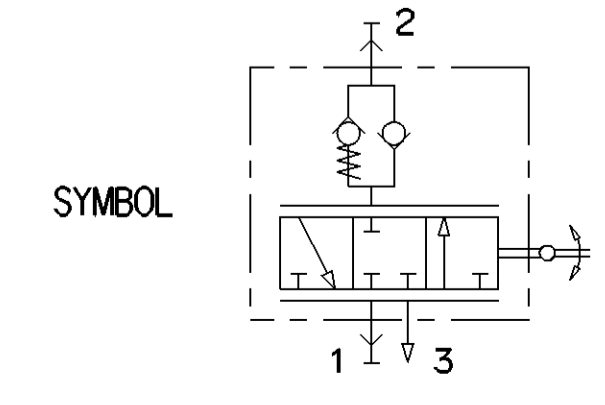
DAMPING RUBBER WASHER ON DELIVERY PORT 2 INCLUDED.

FLOW RATE FOR : P1=8 bar and P1=11 bar



|                            |                  |
|----------------------------|------------------|
| 1                          | SUPPLY           |
| 2                          | DELIVERY         |
| THERMAL RANGE              | -40°C ... +100°C |
| WORKING PRESSURE           | P1= 11 bar MAX.  |
| EXCEPTIONAL INLET PRESSURE | P1= 14 bar MAX.  |
| RESIDUAL PRESSURE          | P2= 0.6±0.3 bar  |

- 1 RAUFOSS ABC SMALL CARTRIDGE FOR PLASTIC TUBE EXTERNAL DIAMETER  $\phi 6 \pm 0.1$
- 2 GREASED WITH SILICONE OIL
- 3 HOLE  $\phi 4$  TO PRE-INDEX IN MECHANICAL NEUTRAL POSITION
- 4 FIXING OF THE VALVE BY SCREW: M8 TORQUE: 28Nm MAX.
- 5 FOR INFORMATION: BUSH EXTERNAL DIAMETER ( $\phi 11.5 \pm 0.5$ )



| General Specifications                 |                       | Copyright WABCO® |              |
|--|-----------------------|------------------|--------------|
| Further Technical Data: PRO 417 034 0  |                       | Date             | Signature    |
| Doc. Code: 035 Sheet: 1 To 5           |                       | 2020-06-03       | Siron J      |
| General Tolerances JED-261             |                       | Checked          | Yeracheshvan |
| Range of Nominal Dimensions ( ± mm)    |                       | Expert           |              |
| Class 1)                               | ± 50 > 50 > 180 > 400 | Thomas Bilgus    |              |
| Fine                                   | 0,5 1,0 1,5 2,0       | Mass             | Scale        |
| Medium                                 | 1,0 2,0 3,0 4,0       | 0,214            | 1:1          |
| Coarse                                 | 2,0 3,5 5,0 6,5       | Size             | 2:1          |
| Tapped Holes acc.                      |                       | Size             | CAD System   |
| 1) Tolerance Class Applied Crossmarked |                       | A 1              | CREO         |

| ProVia          |  | LEVELING VALVE                  |              |
|-----------------|--|---------------------------------|--------------|
| Material No.    |  | Date of first issue: 2020-06-10 |              |
| PRO 417 034 0   |  | Doc.Code                        | Language     |
| 005             |  | EN                              | 1/1          |
| ECN-No.         |  | Revision                        | Techn. Resp. |
| -               |  | -                               | 5642-AM      |
| Replacement for |  | -                               |              |

Tutti i diritti sono riservati. È vietata espressamente la ristampa o l'uso non autorizzato senza permesso scritto dalla WABCO. La WABCO non si assume alcuna responsabilità per danni materiali o morali. Questa documentazione è di proprietà della WABCO. Le immagini e i disegni sono marchi registrati della WABCO. La WABCO non si assume alcuna responsabilità per danni materiali o morali. Toute réimpression ou utilisation non autorisée sans la permission écrite de la WABCO est formellement interdite. Toute utilisation non autorisée constituera une violation de la législation en vigueur et sera punie par les poursuites judiciaires. Toute réimpression ou utilisation non autorisée sans la permission écrite de la WABCO est formellement interdite. Toute utilisation non autorisée constituera une violation de la législation en vigueur et sera punie par les poursuites judiciaires.