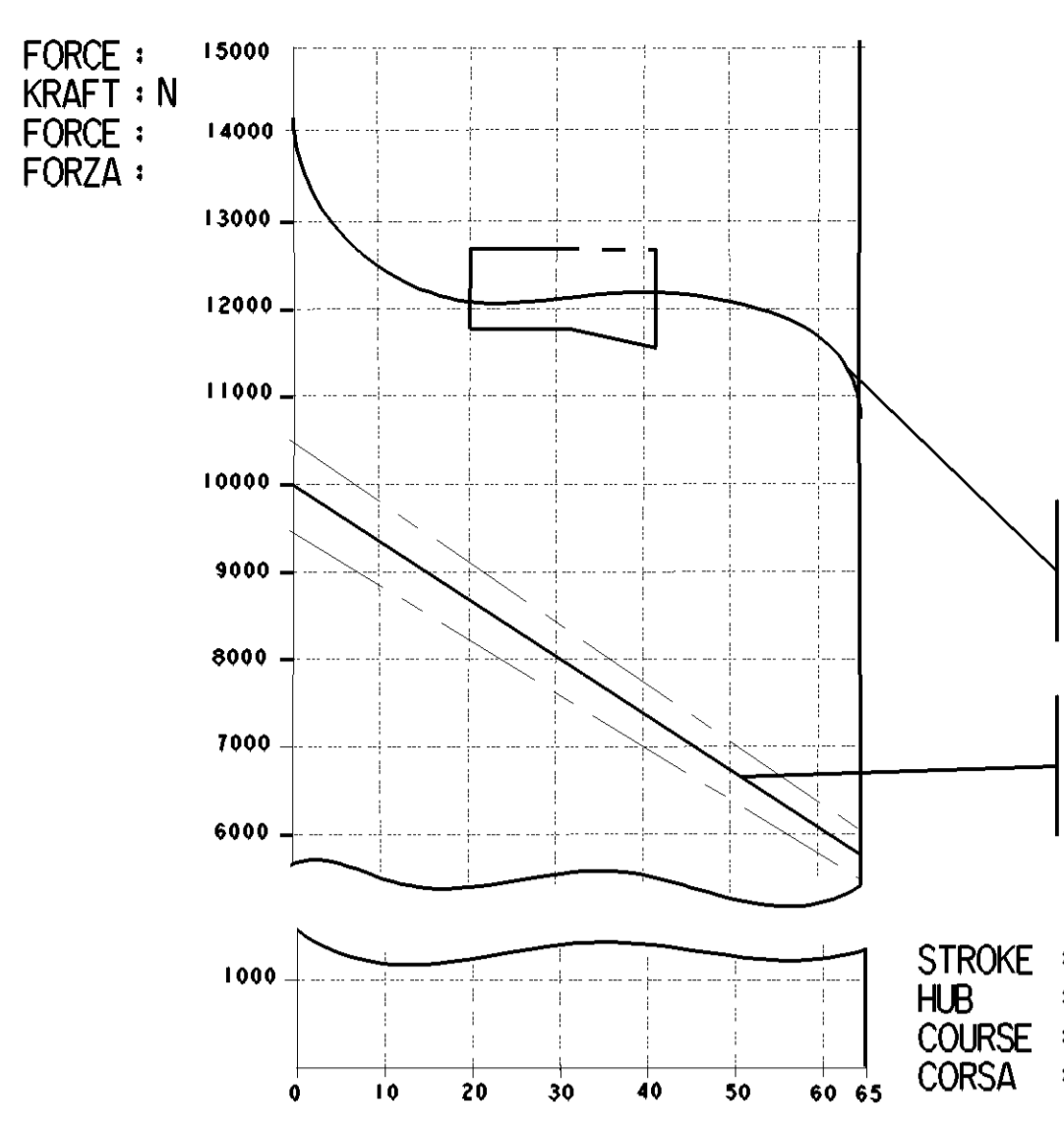


SURFACE PROTECT. OBERFL. SCHUTZ	
I	POWDER COATING JED-240-7
II	Zn JED-256-5
III	PHOSPHATING & OILING JED-371
IV	AL JED-259
V	RUBBER / PLASTIC
VI	MS

**TECHNICAL DATA  
TECHNISCHE DATEN**



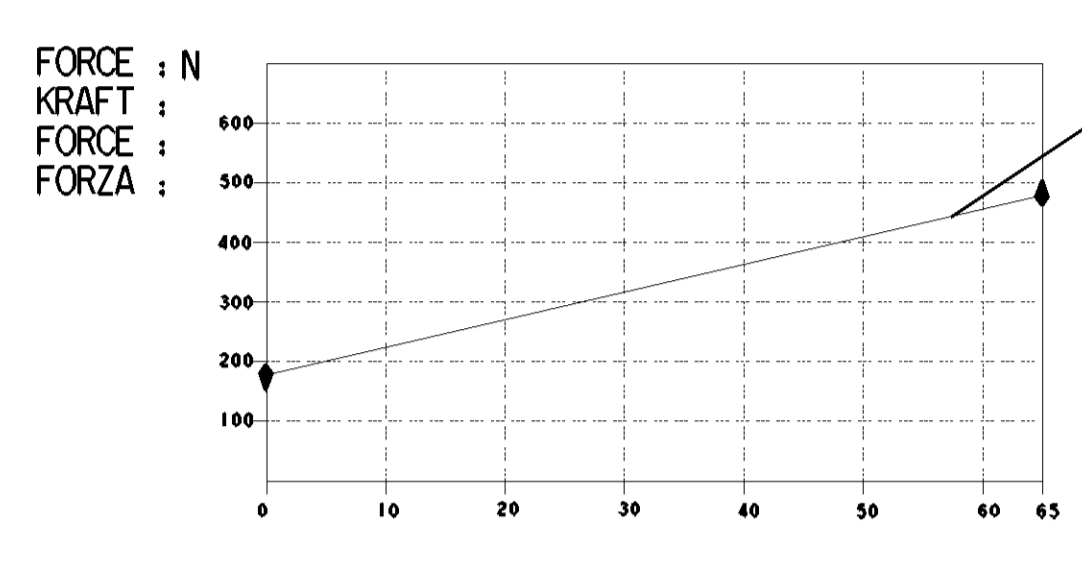
AIR VOLUME OF SERVICE BRAKE PART AT 2/3 OF ITS STROKE  
HUBVOLUMEN DES BETRIEBSBREMSTEILES BEI 2/3 HUB  
VOLUME D'AIR DU DISPOSITIF DU FREIN DE SERVICE A 2/3 DE LA COURSE  
VOLUME D'ARIA DELLA SEZIONE DI FRENO DI SERVIZIO A 2/3 DELLA CORSA  
: ca. 1.050x10<sup>3</sup> cm<sup>3</sup>

AIR VOLUME OF SPRING BRAKE PART  
HUBVOLUMEN DES FEDERSPEICHERS  
VOLUME D'AIR DU DISPOSITIF RESSORT  
VOLUME D'ARIA DELLA SEZIONE A MOLLA  
: ca. 1.64x10<sup>3</sup> cm<sup>3</sup>

OUTPUT FORCE OF SERVICE BRAKE PART AT  
KRAFTABGABE DES BETRIEBSBREMSTEILES BEI  
EFFORT DE POUSSEE DU DISPOSITIF DU FREIN DE SERVICE SOUS  
FORZA DI SPINTA DELLA SEZIONE DI FRENO DI SERVIZIO PER  
: 6.5 bar

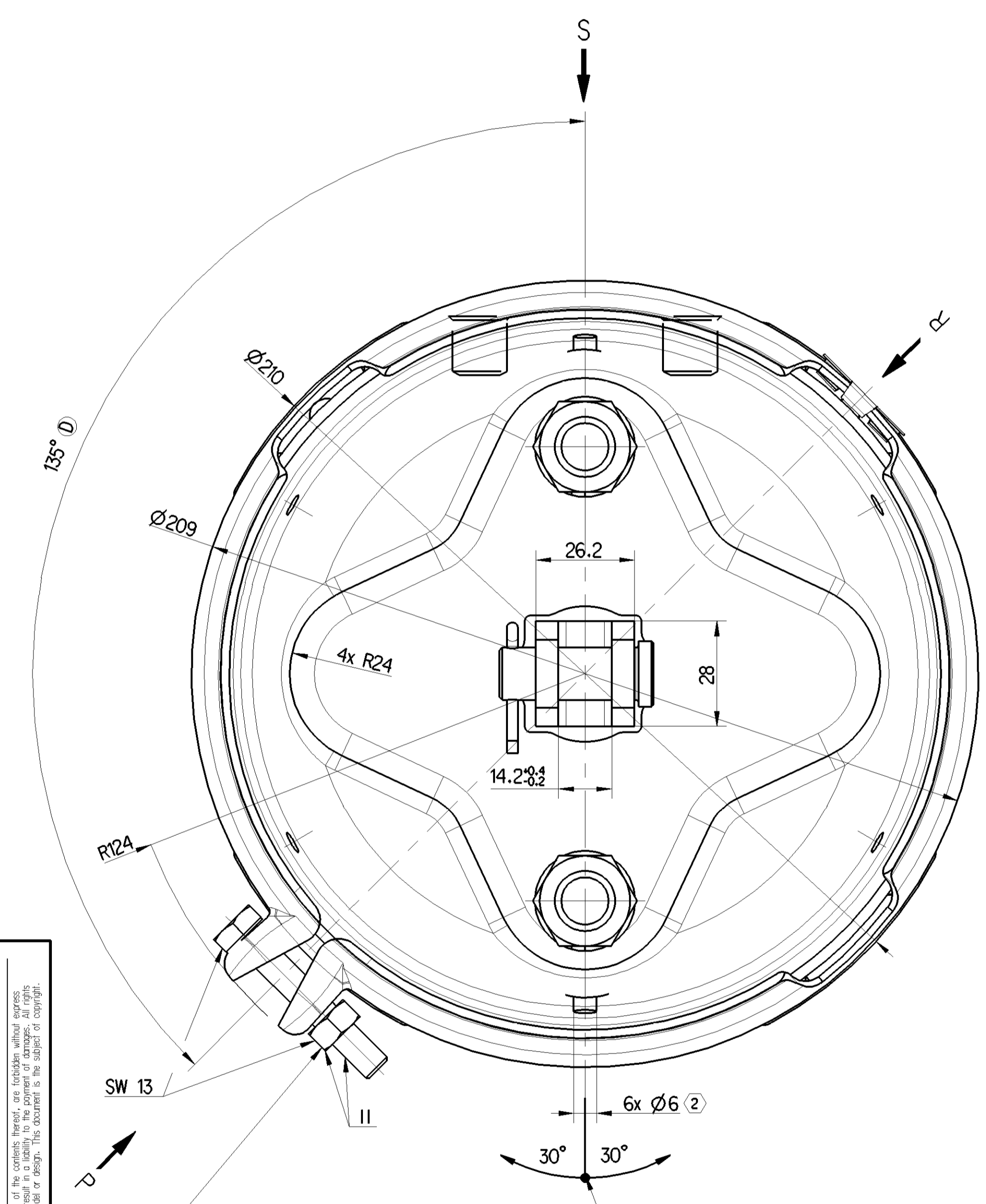
OUTPUT FORCE OF SPRING BRAKE PART, RELEASE PRESSURE  
KRAFTABGABE DES FEDERSPEICHERS, LOESEDRUCK  
EFFORT DE POUSSEE DU DISPOSITIF RESSORT, PRESSION DE DESSERRAGE  
FORZA DI SPINTA DELLA SEZIONE A MOLLA, PRESSIONE DI RILASCIO  
: 4.9±0.4 bar

NOMINAL VALUES GIVEN FOR SERVICE SIDE, TOLERANCE BAND AS PER DIN 74660-1  
NOMINAL VALUES GIVEN FOR SPRING SIDE, TOLERANCE BAND ±5%



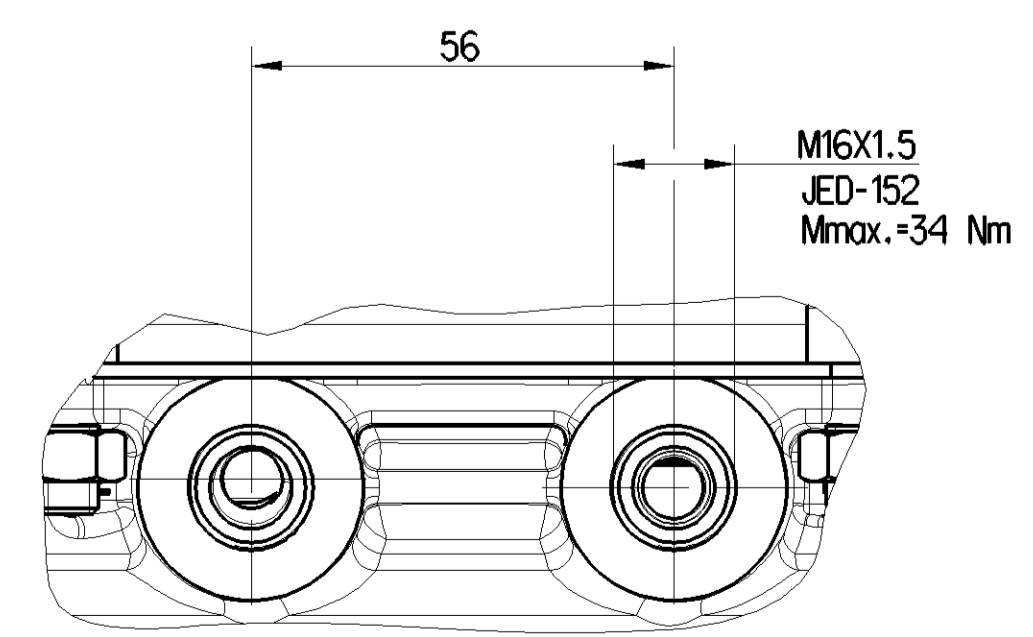
FORCE OF RETURN SPRING OF SERVICE BRAKE PART  
RUECKSTELLFEDERKRAFT DES BETRIEBSBREMSTEILES  
EFFORT DU RESSORT DE RAPPEL DU DISPOSITIF DU FREIN DE SERVICE  
FORZA DELLA MOLLA DI RITORNO DELLA SEZIONE DI FRENO DI SERVIZIO  
: 4.9±0.4 bar

STROKE : mm  
HUB :  
COURSE :  
CORSA :

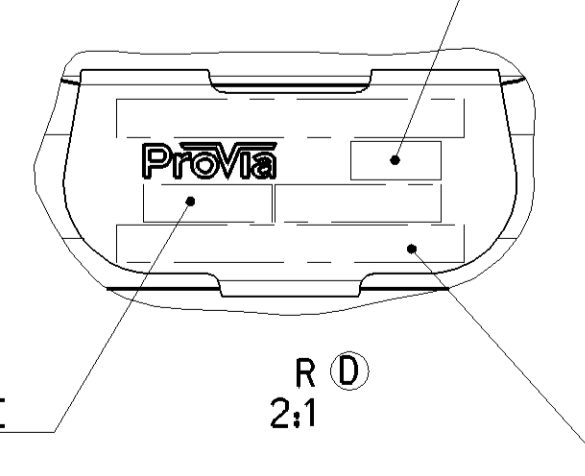


TORQUE : 25.5±2.5 Nm  
ANZUGSMOMENT : 25.5±2.5 Nm  
COUPLE DE SERRAGE :  
COPPIA DI SERRAGGIO:

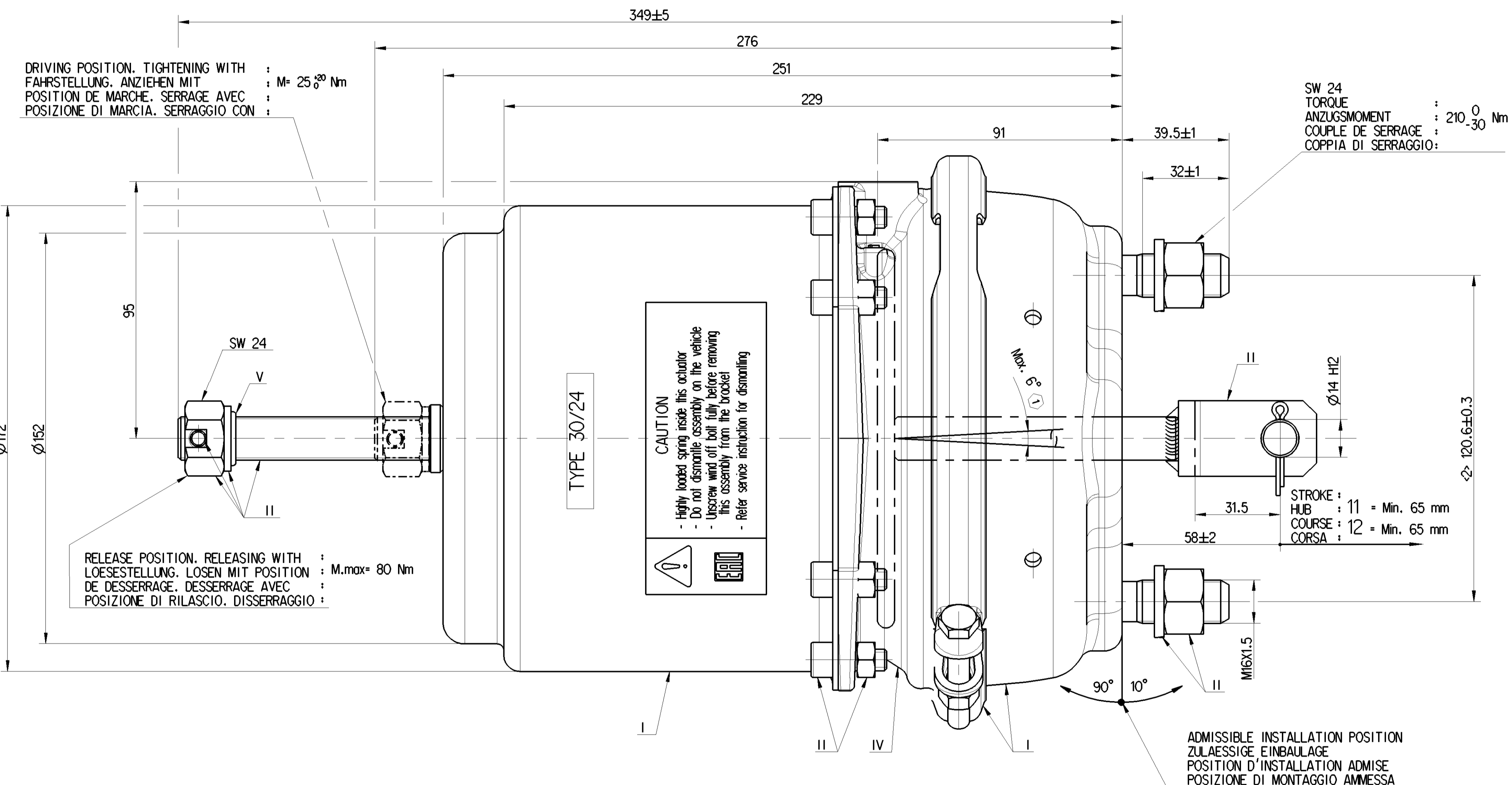
TO BE INSTALLED WITH LOWER BREATHER HOLE OPEN  
IM EINBAUZUSTAND UNTERE ATMUNGSBOHRUNG GEOEFFNET  
A MONTER AVEC LE RENIFLARD INFERIEUR OUVERT  
INSTALLAZIONE CON IL FORO DI SFILATO INFERIORE APERTO



WEEK / YEAR MANUFACTURE  
FERTIGUNGSWOCHE/JAHR  
SEMAINE/ANNEE DE FABRICATION  
SETTIMANA/ANNO DELLA FABRICAZIONE



ProVia IDENTIFICATION NUMBER  
ProVia TEILE NUMBER  
NUMERO D' IDENTIFICAZIONE ProVia  
NUMERO D' IDENTIFICAZIONE



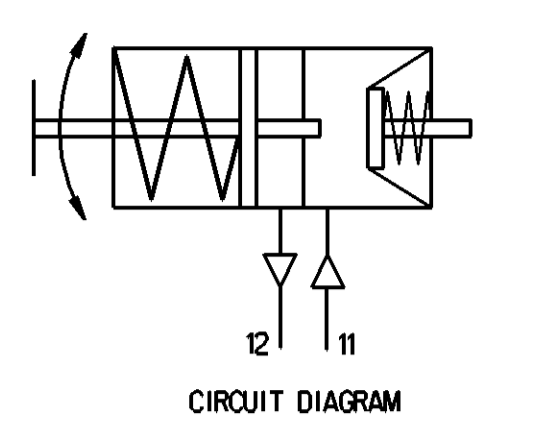
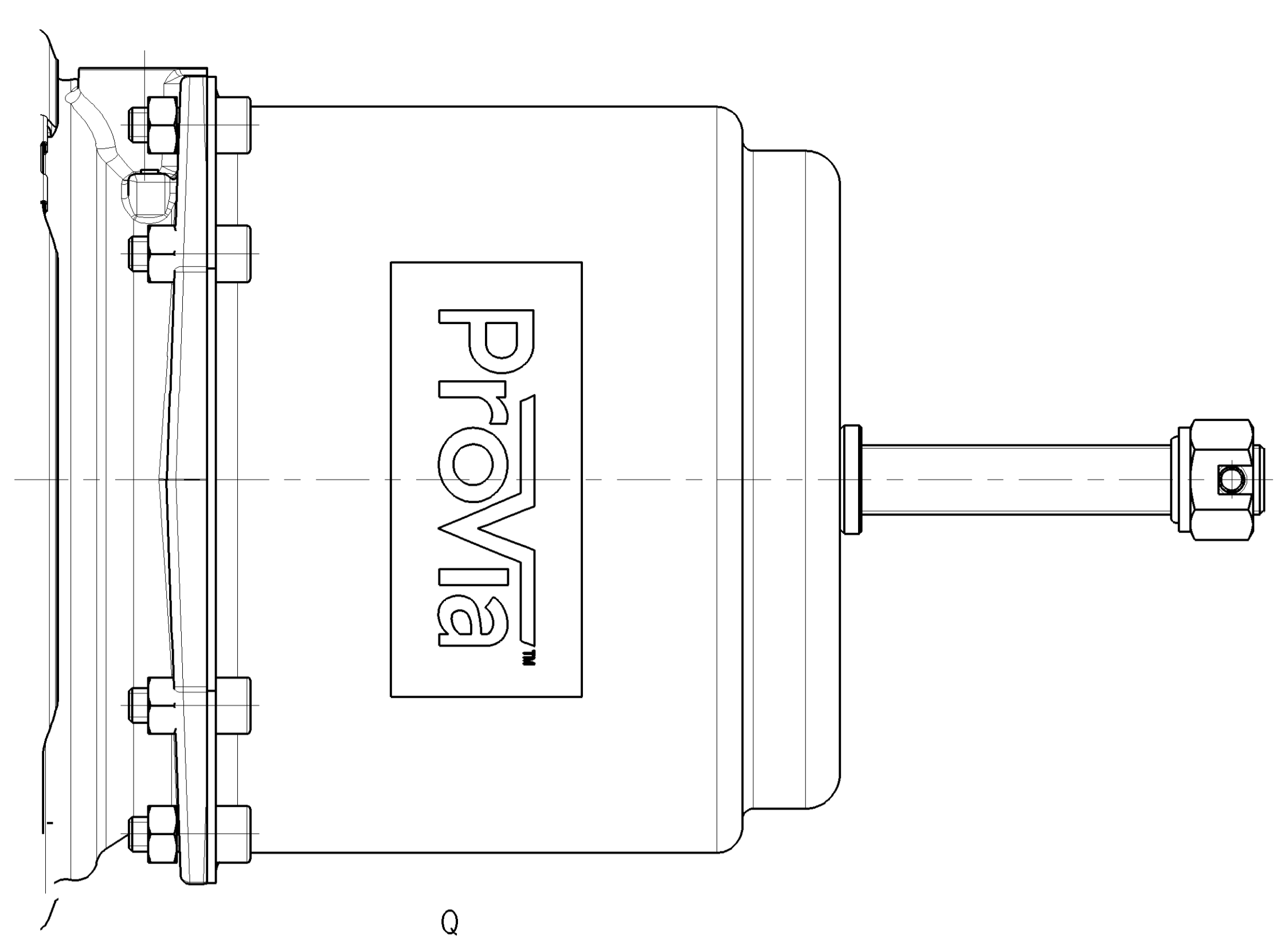
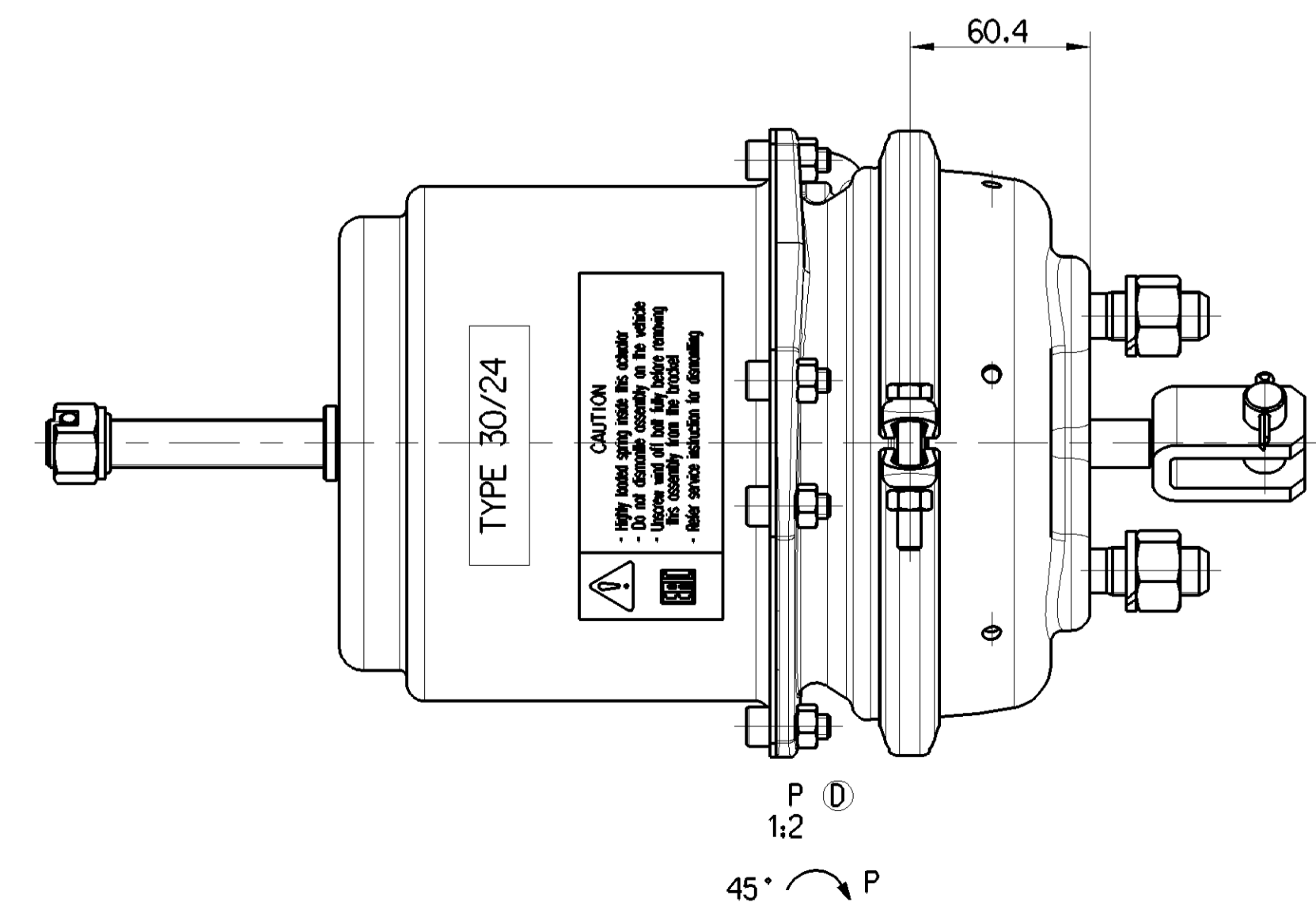
DRIVING POSITION, TIGHTENING WITH :  
FAHRSTELLUNG, ANZIEHEN MIT : M= 25±0° Nm  
POSITION DE MARCHE, SERRAGE AVEC :  
POSIZIONE DI MARCIA, SERRAGGIO CON :

RELEASE POSITION, RELEASING WITH :  
LOESESTELLUNG, LOSEN MIT POSITION : M.max= 80 Nm  
DE SERRAGE, DESSERRAGE AVEC :  
POSIZIONE DI RILASCIO, DISSERRAGGIO :

**CAUTION**  
- highly loaded spring inside this actuator  
- Do not disassemble assembly on the vehicle  
- Use screw and oil bolt fully before removing  
the assembly from the truck!  
- Refer service instruction for assembly

SW 24  
TORQUE : 210<sup>0</sup>/<sub>-30</sub> Nm  
ANZUGSMOMENT :  
COUPLE DE SERRAGE :  
COPPIA DI SERRAGGIO:

ADMISSIBLE INSTALLATION POSITION  
ZULAESSIGE EINBAULAGE  
POSITION D'INSTALLATION ADMISE  
POSIZIONE DI MONTAGGIO AMMESSA



MEDIUM : AIR MEDIUM : LUFT FLUIDE : AIR FLUIDO : ARIA
NOMINAL DIAMETER : NENNWEITE : MIN Ø8.5 DIAMETRE NOMINAL : DIAMETRO NOMINALE :
WIDTH ACROSS FLATS SCHLUSSELWEITE SURPLATS LARGHEZZA IN CHIAVE
THERMAL RANGE OF APPLICATION : THERMISCHER ANWENDUNGSBEREICH : -40°C...+80°C GAMME D'APPLICATION THERMIQUE : CAMPO TERMICO D'APPLICAZIONE :
PORT : SERVICE BRAKING SYSTEM, WORKING PRESSURE : Pe max. = 10 bar ANSCHLUSS : 11 BETRIEBSBREMSEANLAGE, BETRIEBSDRUCK : ORIFICE : DISPOSITIF DE FREINAGE DE SERVICE, PRESSION D'UTILISATION : ORIFIZIO : DISPOSITIVO DI FREINATURA DI SERVIZIO, PRESSIONE DI ESERCIZIO : (TEMPORARILY / (KURZZEITIG : Pe max. = 13 bar) (DE COURTE DUREE / (BREVE TEMPO SOLO :
PORT : SPRING BRAKE CYLINDER, WORKING PRESSURE : Pe max. = 8.5 bar ANSCHLUSS : 12 FEDERSPEICHERZYLINDER, BETRIEBSDRUCK : ORIFICE : CYLINDRE A RESSORT, PRESSION D'UTILISATION : ORIFIZIO : CILINDRO A MOLLA, PRESSIONE DI ESERCIZIO : (TEMPORARILY / (KURZZEITIG : Pe max. = 11 bar) (DE COURTE DUREE / (BREVE TEMPO SOLO :
DEFLECTION : max. 6° AT STROKE AUSLENKUNG : max. 6° BEI HUB DEFLEXION : A COURSE DEVIATION : A CORSA
OPEN BREATHER HOLE OFFEN ATMUNGSBOHRUNG OUVERT TROU RENIFLEUR APERTO FORO RESPIRATORE
DELIVERY : ANLIEFERUNG : LIVRAISON : FORNITURA : <input checked="" type="checkbox"/> RELEASE POSITION LOESESTELLUNG POSITION DE DESSERRAGE POSIZIONE DI RILASCIO <input type="checkbox"/> DRIVING POSITION FAHRSTELLUNG POSITION DE MARCHE POSIZIONE DI MARCIA
UNIT DRAWN WITH AIR APPLIED AT PORT 12 EINHEIT MIT LUFT APPLIED AT PORT GEZEICHNET 12 UNIDADE DESENHADO COM ARIA APLICADA A PORTA 12 UNITA' DISEGNATA CON ARIA APLICATA A PORTA 12

SAFETY CHARACTERISTICS  
SICHERHEITSMERKMALE  
CARACTERISTIQUES DE SECURITE  
CARATTERISTICHE DI SICUREZZA

SIGNIFICANT CHARACTERISTICS  
WESENTLICHE MERKMALE  
CARACTERISTIQUES SIGNIFIANTES  
CARATTERISTICHE SIGNIFICATIVE

General Specifications JED-334-1, Size ISO 14400 LP		Copyright 146000		ProVia	
Further Technical Data: PRO 491 001 0	Drawn: Nagerdan	Year: 2017-09-14	Sheet: 1	To: 4	2017-09-14
Doc. Code: 020	General Tolerances: JED-261	Drawn: Nagerdan	Checked: Assikhanov	Year: 2017-10-16	2017-09-14
Range of Nominal Dimensions L (± mm)		SURESH GAYAKHAR		Version No. 006 ML 1/1	
Class 0	± 0.05	Class 1	± 0.10	Class 2	± 0.15
Class 3	± 0.20	Class 4	± 0.30	Class 5	± 0.40
Class 6	± 0.50	Class 7	± 0.60	Class 8	± 0.70
Class 9	± 0.80	Class 10	± 0.90	Class 11	± 1.00
Class 12	± 1.20	Class 13	± 1.50	Class 14	± 2.00
Class 15	± 2.50	Class 16	± 3.00	Class 17	± 4.00
Class 18	± 5.00	Class 19	± 6.00	Class 20	± 8.00
Class 21	± 10.00	Class 22	± 15.00	Class 23	± 20.00
Class 24	± 30.00	Class 25	± 50.00	Class 26	± 100.00
Class 27	± 150.00	Class 28	± 300.00	Class 29	± 600.00
Class 30	± 1000.00	Class 31	± 1500.00	Class 32	± 2000.00
Tapped Holes acc. JED-102		SURES GAYAKHAR		Revision: 4	
Tolerance class: Approx. unrounded		PRO 492 001 0		Scale: 1/1	
A 0		CREO		174268	