

Non è permesso copiare, o terzi o riprodurre questo documento, né utilizzare il contenuto o renderlo comunque noto a terzi senza autorizzazione esplicita. Ogni infrazione costituisce un evidente abuso e comporterà il risarcimento dei danni subiti. E' fatta riserva di tutti i diritti derivanti da brevetti o modelli.

Copying of this document and giving it to others and the use or communication of the contents thereof, are forbidden without express authority. Contention of this restriction will constitute an evident abuse and result in a liability to the payment of damages. All rights are reserved in the event of the grant of patent or registration of a utility model or design. This document is the subject of copyright.

Tout réimpression ou reproduction de ce document, toute exploitation ou communication de son contenu sont interdites, sauf autorisation expresse. Tout manquement à cette règle constitue un abus évident et expose son auteur au versement de dommages et intérêts. Tous droits de propriété industrielle réservés, notamment en matière de brevets et de modèles.

Wiedergabe sowie Vervielfältigung dieser Unterlagen, Verleihen und Mitteilen ihres Inhalts nicht gestattet, soweit nicht ausdrücklich ansonsten, weitergegeben, stellen einen offensichtlichen Missbrauch dar und verpflichten zu Schadenersatz. Alle Rechte für den Fall der Patenterteilung oder Gebrauchsmuster-Eintragung vorbehalten.

**MATERIAL AND SURFACE PROTECTION**

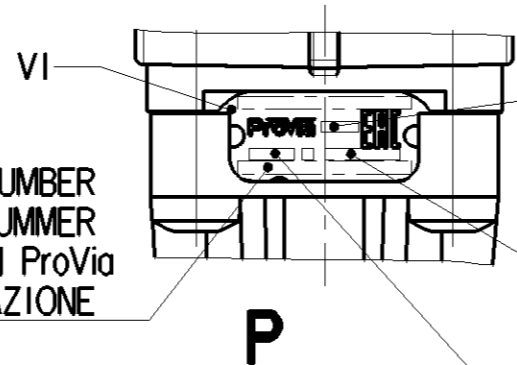
I	AL	JED-029M1 / JED-259-3
II	PBT-GF black	JED-352-1
III	St	JED-051M4 / JED-739-3
IV	POM black	JED-005M1
V	NBR	JED-235
VI	AL	JED-077M1 / JED-007-1
VII	PET-GF black	JED-357-1
VIII	St	JED-048M1 / JED-731-6
IX	Ⓐ St	JED-051M1 / JED-739-3

MANUFACTURING PLANT  
 PRODUKTIONSSTAETTE  
 LIEU DE FABRICATION  
 LUOGO DI FABRICAZIONE

ADJUSTED PRESSURE  
 EINGESTELLTER DRUCK  
 PRESSION ADJSTEE  
 PRESSIONE REGOLAZIONE

WEEK / YEAR OF MANUFACTURE  
 FERTIGUNGSWOCHE / JAHR  
 SEMAINE / ANNEE DE FABRICATION  
 SETTIMANA / ANNO DELLA FABRICAZIONE

ProVia IDENTIFICATION NUMBER  
 ProVia TEILE NUMMER  
 NUMERO D'IDENTIFICATION ProVia  
 NUMERO D'IDENTIFICAZIONE



MAX. PERMISSIBLE PRESSURE;  
 MAXIMAL ZULAESSIGER DRUCK;  
 PRESSION MAXIMALE ADMISSIBLE;  
 MASSIMA PRESSIONE AMMISSIBILE:  $p_e \text{ max.} = 20 \text{ bar}$

MEDIUM: AIR  
 MEDIUM: LUFT  
 FLUIDE: AIR  
 FLUIDO: ARIA

THERMAL RANGE OF APPLICATION;  
 THERMISCHER ANWENDUNGSBEREICH;  
 GAMME D' APPLICATION THERMIQUE;  
 CAMPO DI APPLICAZIONE TERMICA:  $-40^\circ\text{C} \dots +80^\circ\text{C}$

NOMINAL DIAMETER  
 NENNWEITE  
 DIAMETRE NOMINAL  
 DIAMETRO NOMINALE

SUPPLY;  
 BELUEFTUNG:  
 ALIMENTATION:  $\varnothing 10$   
 ALIMENTAZIONE:

EXHAUST;  
 ENTLUEFTUNG:  $\varnothing 4$   
 ECHAPPEMENT:  
 SCARICO:

INSTALLATION POSITION AS DRAWN;  
 EINBAULAGE WIE GEZEICHNET;  
 POSITION D' INSTALLATION SUIVANT DESSIN:  $\pm 45^\circ$   
 POSIZIONE DI MONTAGGIO COME DISEGNATO:

PROTECTED;  
 GESCHUETZT:  $\pm 90^\circ$   
 PROTEGES:  
 PROTETTI:

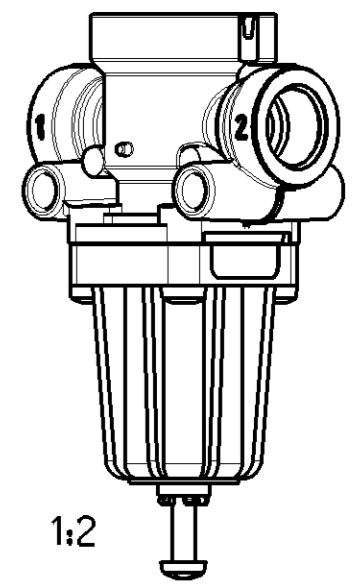
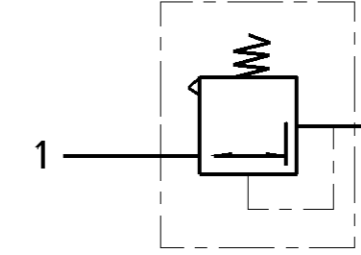
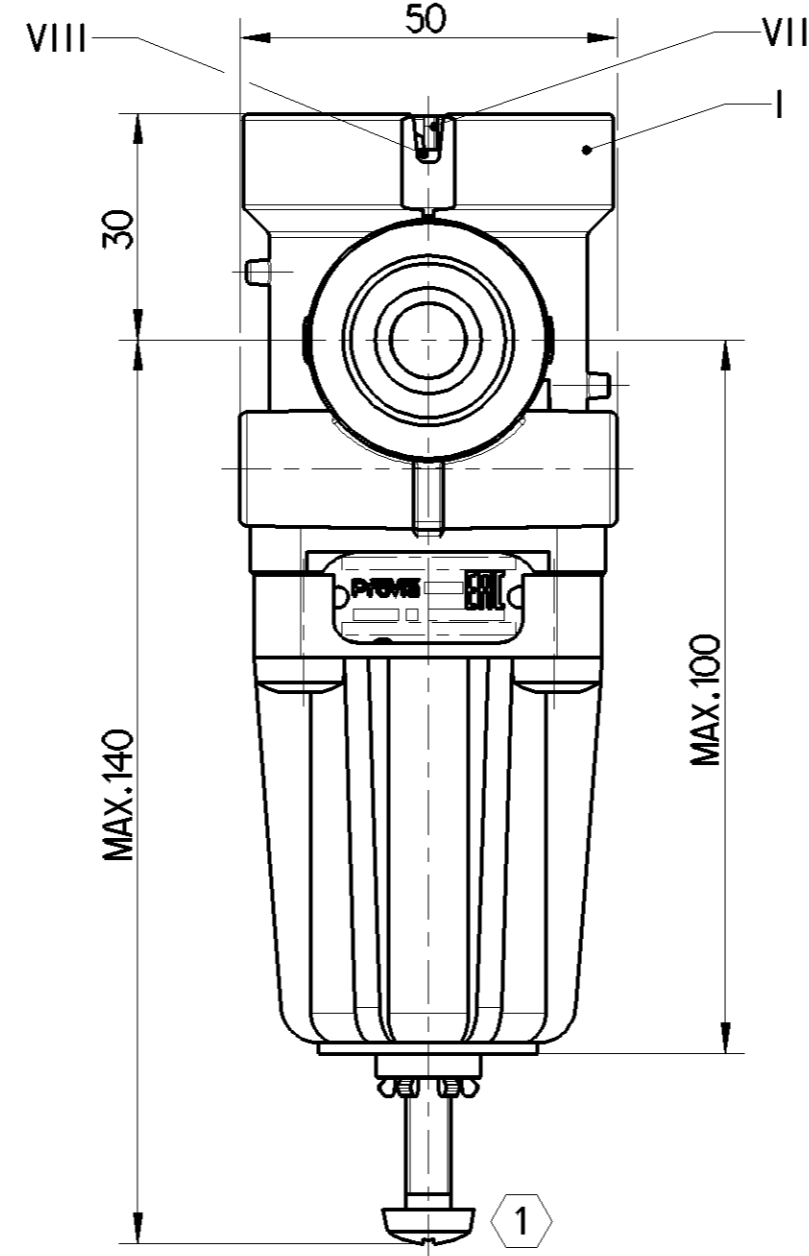
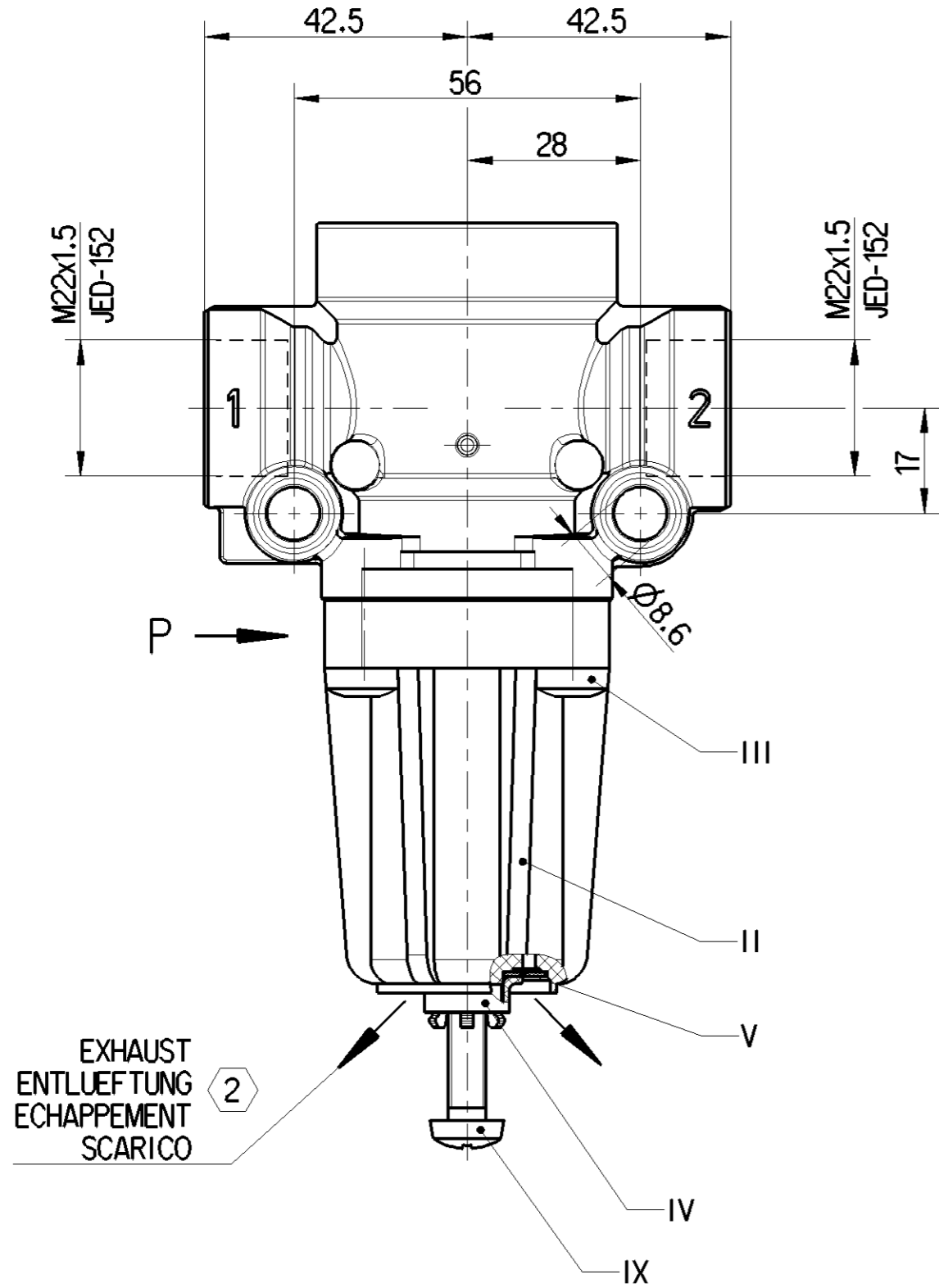
INLET PRESSURE;  
 EINGESTEUESTER DRUCK;  
 PRESSION D' ALIMENTATION;  
 PRESSIONE DI ALIMENTAZIONE:  $p_1 = 8 \text{ bar}$

DELIVERY PRESSURE  
 AUSGESTUEUERTER DRUCK  
 PRESSION DELIVREE  
 PRESSIONE EROGATA

PRESSURE LIMITATION;  
 DRUCKBEGRENZUNG:  
 LIMITATION DE PRESSION:  
 LIMITAZIONE DELLA PRESSIONE:  $p_2 = 1.8 +0.3/-0 \text{ bar}$

PRESSURE LIMITATION DECREASE DURING CONSUMPTION;  
 VERRINGERUNG DER DRUCKBEGRENZUNG WAEHREND DES VERBRAUCHS:  
 DIMINUTION DE LA LIMITATION PENDANT LA CONSOMMATION:  
 RIDUZIONE DELLA LIMITAZIONE DURANTE IL CONSUMO:  $\Delta p \text{ max.} = 0.6 \text{ bar}$

TORQUE FOR CONNECTIONS;  
 ANZUGSMOMENT FUER EINSCHRAUBSTUTZEN:  
 COUPLE DE SERRAGE DES RACCORDS:  
 COPPIA DI SERRAGGIO DEI RACCORDI:  $M22x1.5 : M_{\text{max.}} = 53 \text{ Nm}$



- 1 ADJUSTMENT MARKED WITH PAINT  
 EINSTELLUNG MIT LACK GEKENNZEICHNET  
 AJUSTAGE MARQUE AVEC VERNIS  
 REGOLAZIONE MARCATO CON VERNICE
- 2 EXHAUST FREE FROM PAINT  
 ENTLUEFTUNG FARBFREI  
 ECHAPPEMENT SANS PEINTURE  
 SCARICO SENZA VERNICE

IT IS FORBIDDEN TO ASSEMBLE THE PLV IF IT IS UNDERGONE A SHOCK BEFORE  
 ES IST VERBOTEN DEN PLV ZU MONTIEREN, WENN ER ZUVOR AUF DEN BODEN GEFALLEN IST  
 IL EST INTERDIT D'ASSEMBLER UN PLV SI IL A SUBI UN CHOCK AUPARAVANT  
 E VIETATO DI CONGEGNARE UN PLV SE A SUBITO UN URTO PRIMA

General Specification: JED-334-1, Size ISO 14405 LP		Copyright WABCO®		<b>ProVia</b>	
Further Technical Data: PRO 643 307 0 (A)		Date	Signature	PRESSURE LIMITING VALVE DRUCKBEGRENZUNGSVENTIL	
Doc. Code: 035	Sheet: 1 To 3	2019-10-10	Drawn: Kolkowski	VALVE DE LIMITATION DI PRESSION VALVOLA LIMITATRICE DI PRESSIONE	
General Tolerances JED-261		2019-10-10	Checked: Pawlowski	Expert: Kolkowski	
Range of Nominal Dimensions ( ± mm)		Mass	Scale	Material No.	Date of first issue: 2019-05-27
Class 1)	$\leq 50$ $> 50 \leq 180$ $> 180 \leq 400$ $> 400$	0.391 kg	1:1 (1:2)	PRO 643 307 0	Doc.Code Language Sheet
Fine	0.5 1.0 1.5 2.0				005 ML 1/1
Medium	1.0 2.0 3.0 4.0				
Coarse	2.0 3.5 5.0 6.5				
Tapped Holes acc. JED-152		Size	CAD System	ECN-No.	Revision
1) Tolerance Class Applied Crossmarked		A 2	CREO	502703	2 x A
				Techn. Resp.	5160_AM
				Replacement for	

100mm