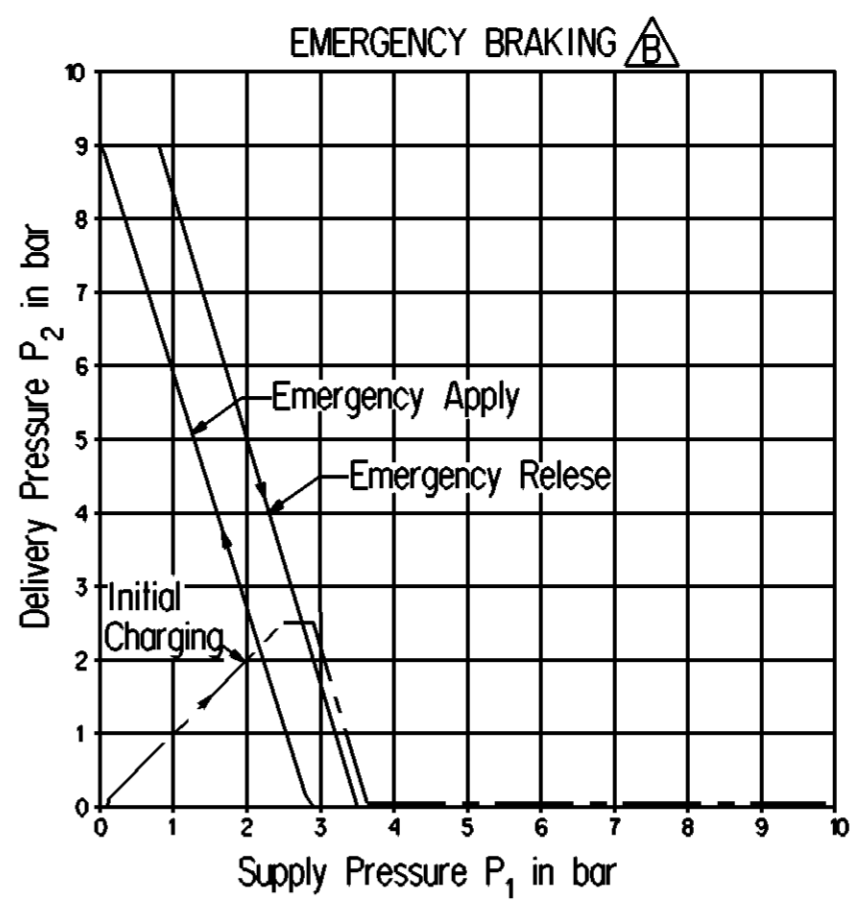
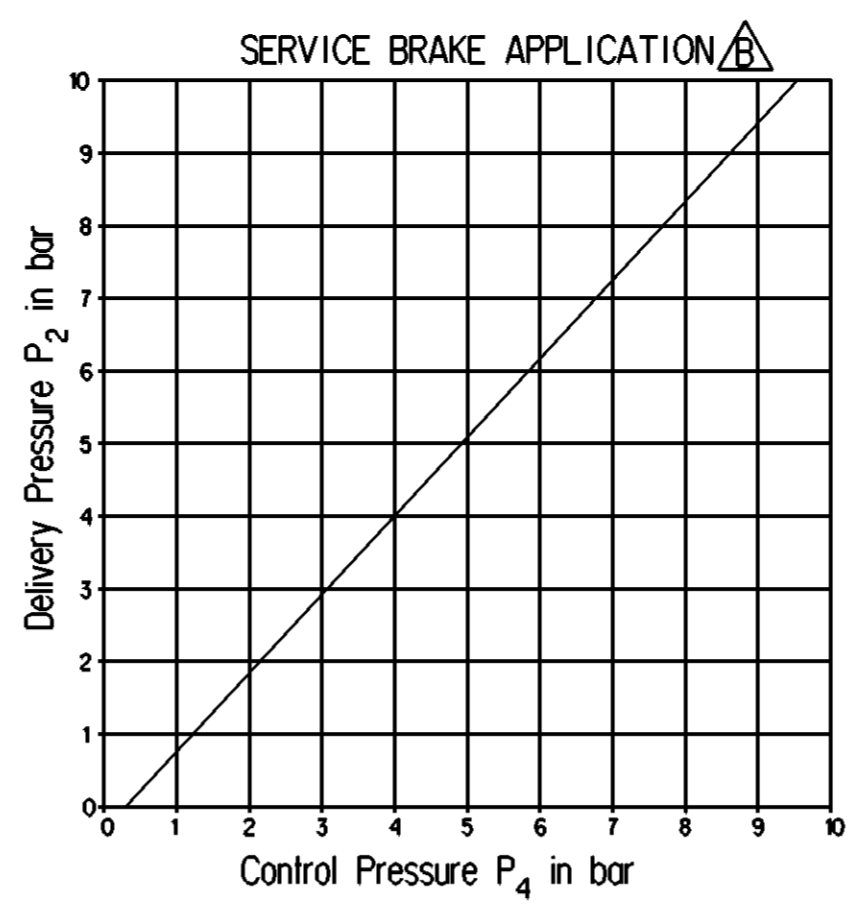
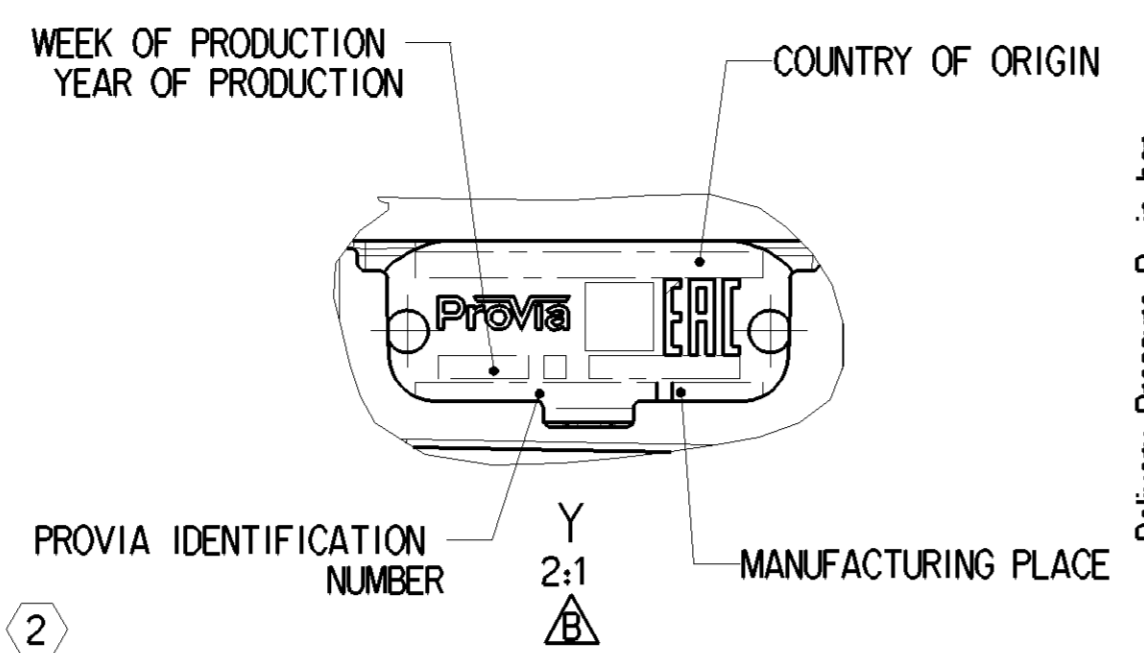
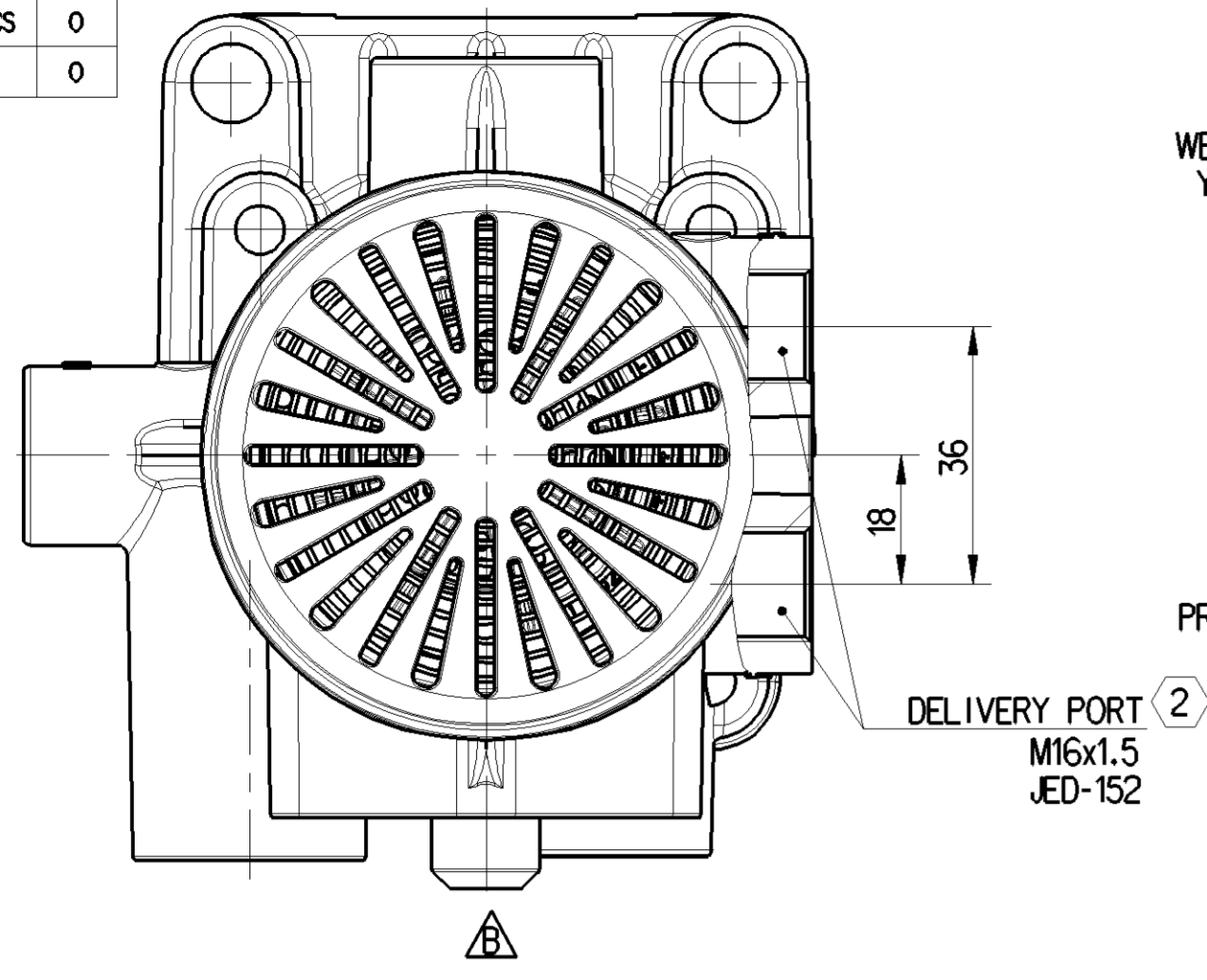
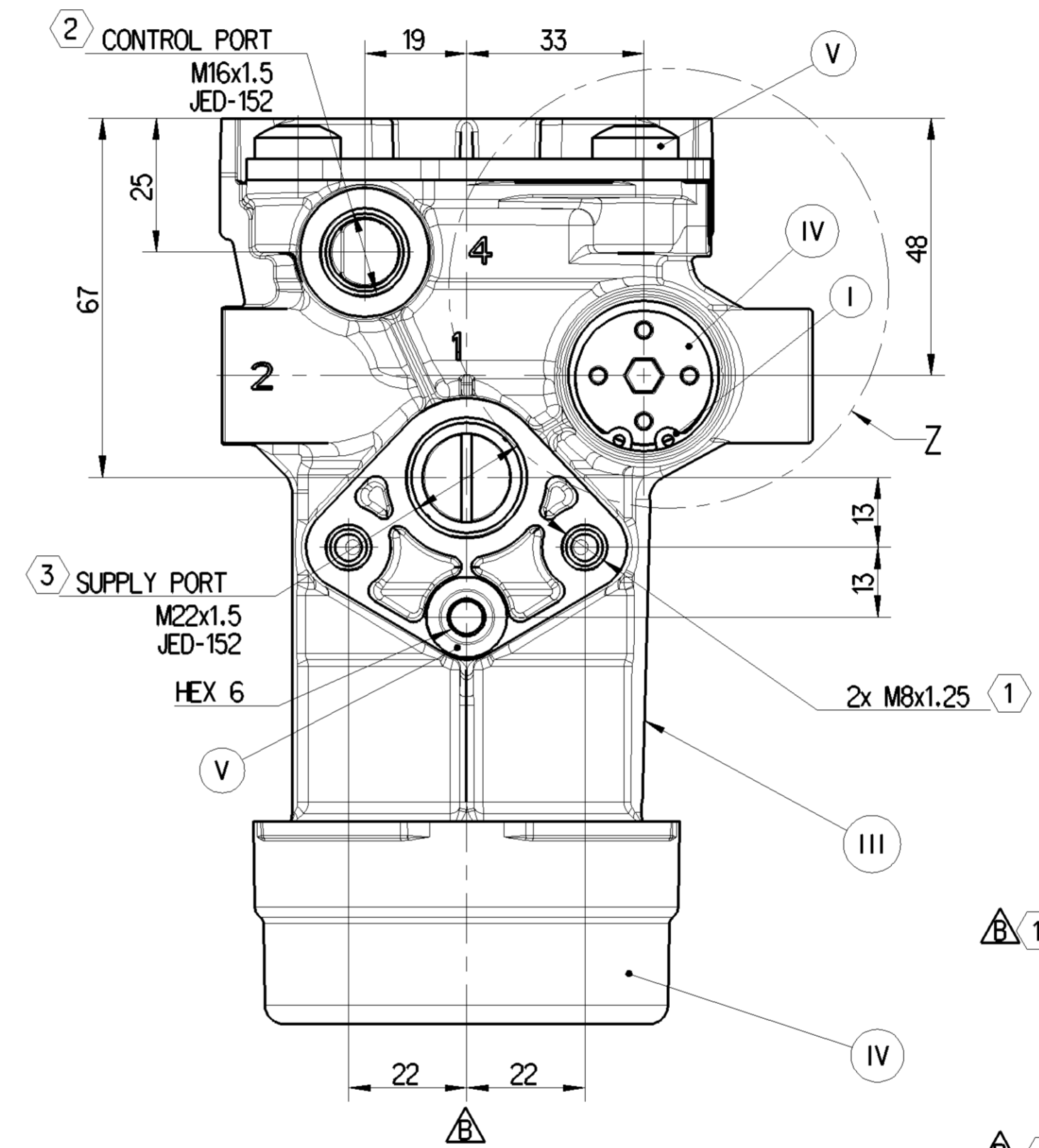
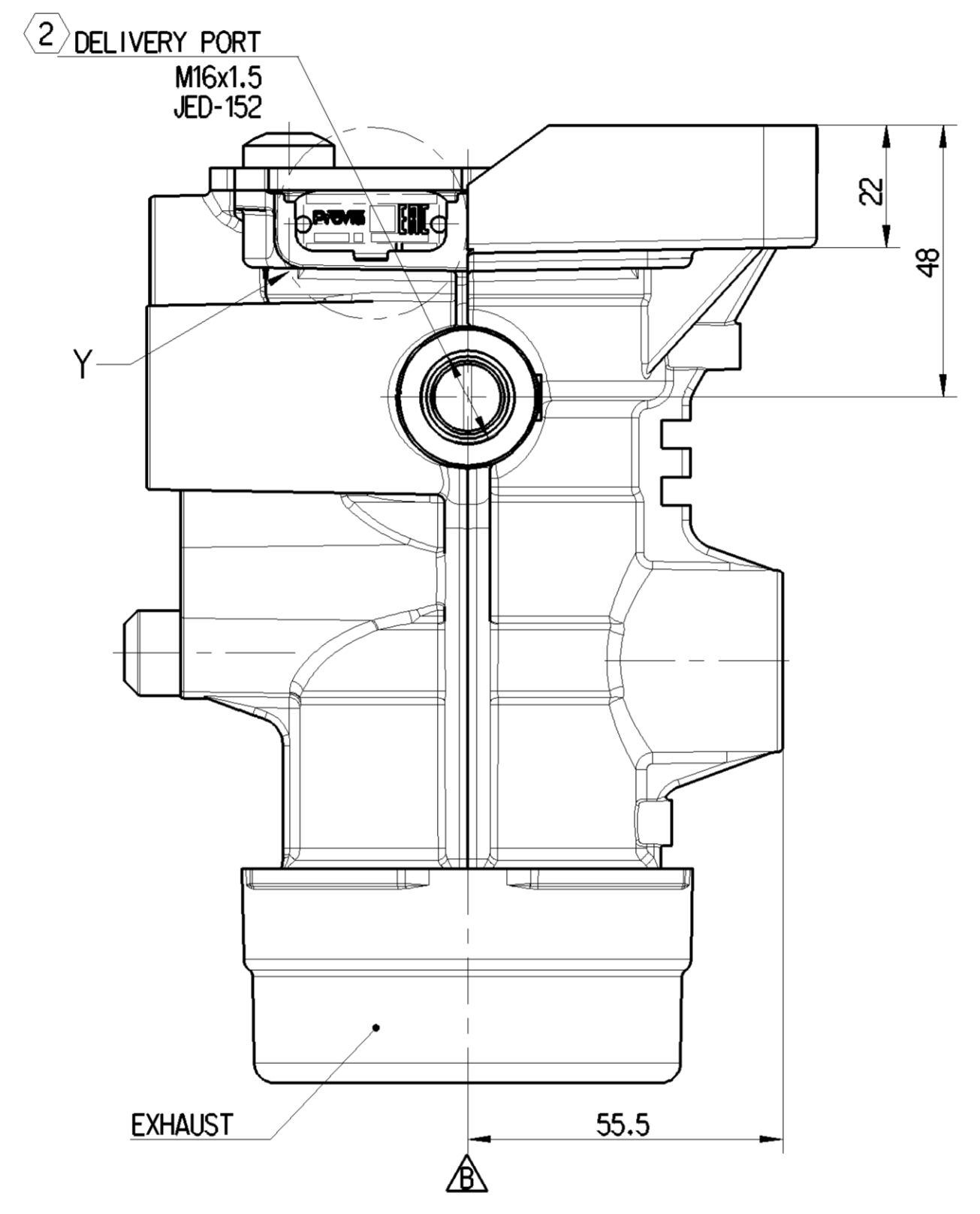
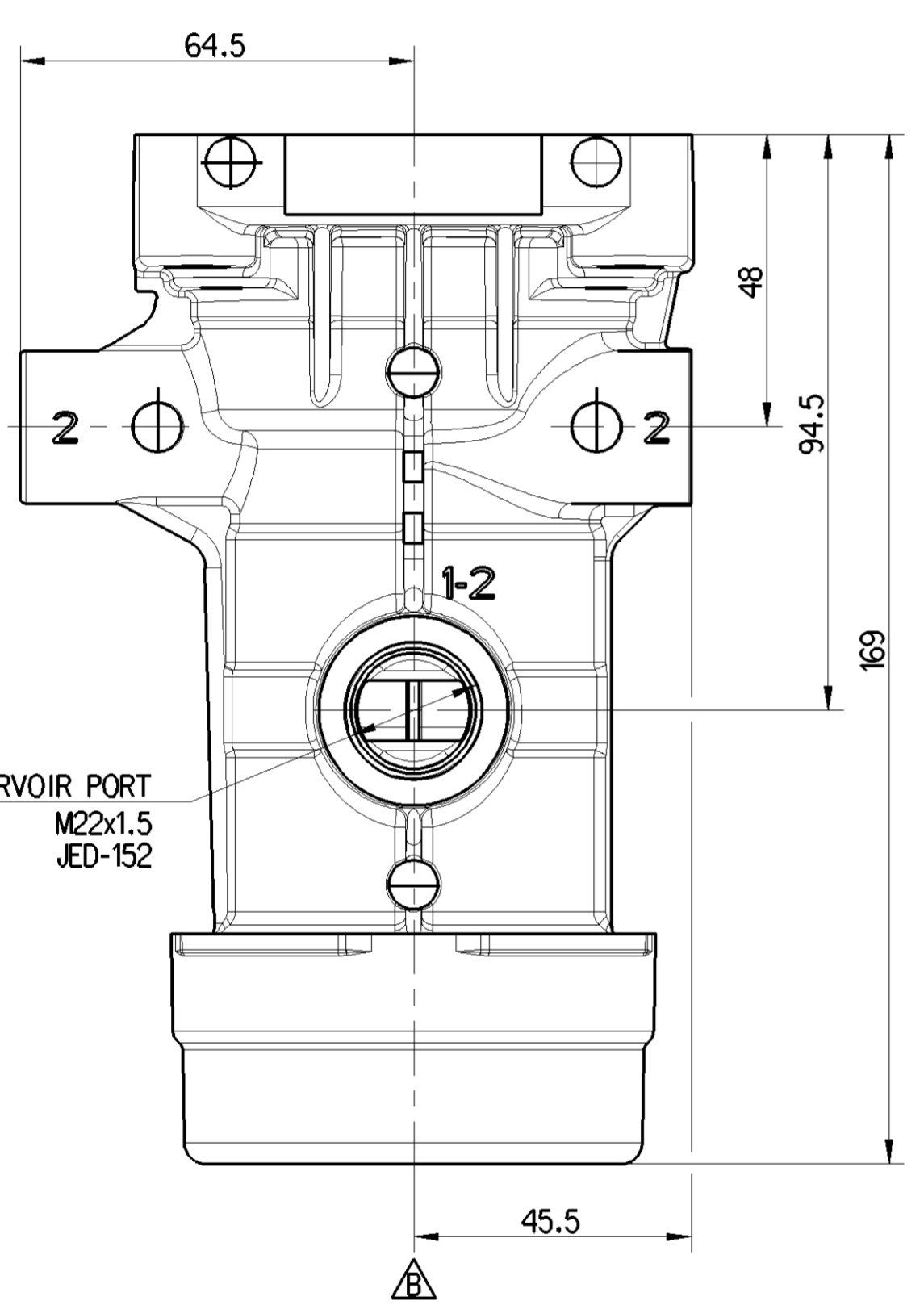


<1> SAFETY CHARACTERISTICS	0
<2> SIGNIFICANT CHARACTERISTICS	0
<C1> CUSTOMER INTERFACE	0



WORKING MEDIUM	AIR
△ THERMAL RANGE OF APPLICATION	-40° TO +65°C
△ SHORT TERM RESISTANCE TO HEAT	MAX. 1h AT 110°C
△ NOMINAL WORKING PRESSURE	9 bar
△ MAXIMUM WORKING PRESSURE	10 bar
△ FILLING CRACK-OFF	0.5 bar MAX.
△ RELAY RATIO	>1
△ CRACK-OFF PRESSURE (WITHOUT PREDOM)	0.3 bar MAX. (+65°C TO -20°C) 0.35 bar MAX. (-20°C TO -40°C)
△ INSTALLATION POSITION	VERTICAL ±60° ALLOWED
PORT 1	SUPPLY PORT
PORT 1-2	RESERVOIR PORT
PORT 2 (3x)	DELIVERY PORT
PORT 4	CONTROL PORT
△ TIGHTENING TORQUE FOR MOUNTING BOLTS	45±2 Nm

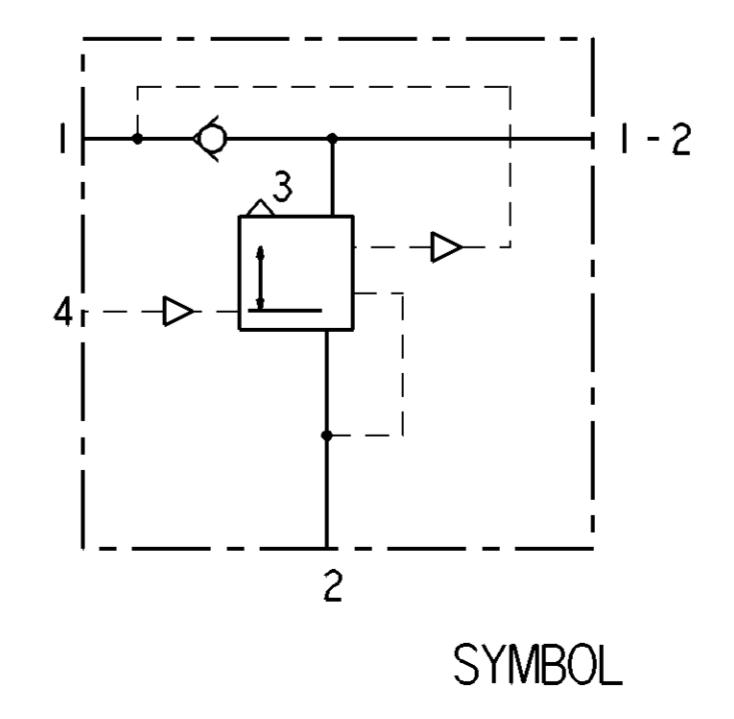
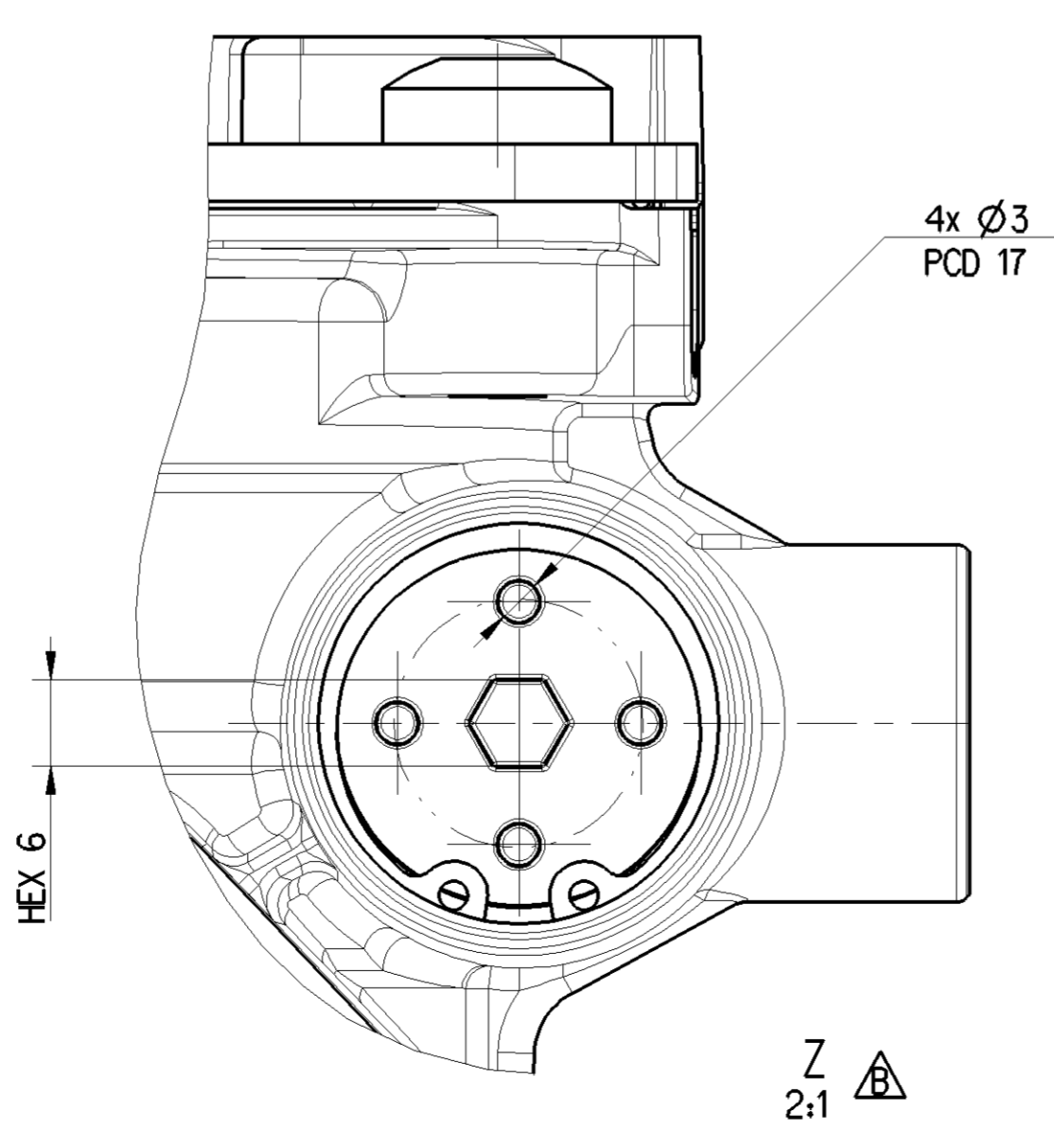
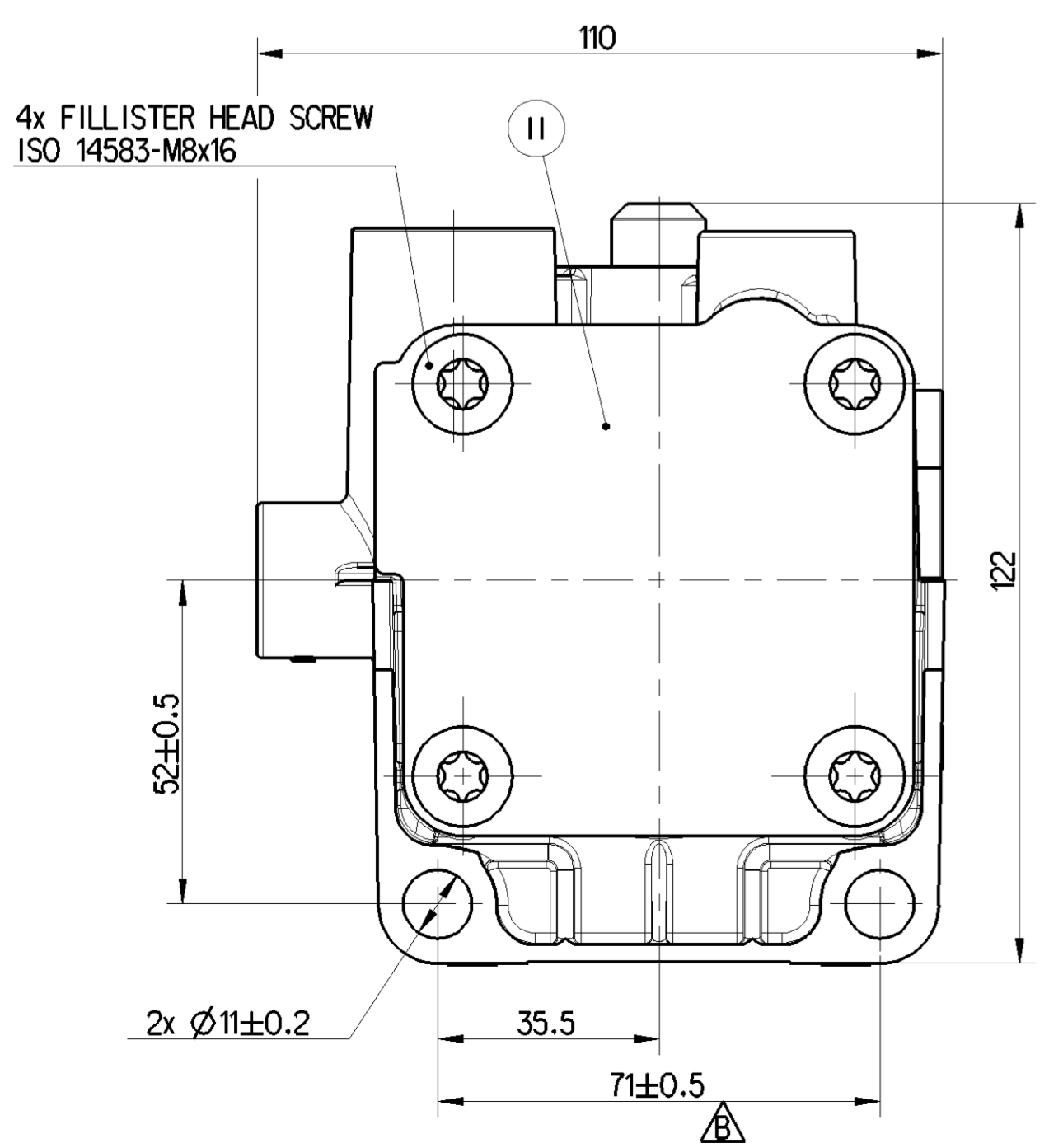


CONDITION	FROM	TO	NOMINAL DIAMETER
△ FILLING	PORT 1	PORT 1-2	≥10 mm
△ BRAKING	PORT 1-2	PORT 2	≥11.5 mm
△ EXHAUSTING	PORT 2	PORT 3	≥10.6 mm

PART CODE	MATERIAL	SURFACE PROTECTION
V	STEEL	ZINC NICKEL PLATED
IV	PLASTIC	NO TREATMENT
III	ALUMINIUM ALLOY	CHROMATED
II	STEEL	POWDER COATED
I	STEEL	ZINC PLATED

NOTE:
 △ 1 ATTACHMENT OF TRAILER RELEASE VALVE
 RECOMMENDED TORQUE: 18±2 Nm

RECOMMENDED TORQUE FOR FITTINGS:
 △ 2 THREAD-M16x1.5, TIGHTENING TORQUE: 30 TO 35 Nm
 △ 3 THREAD-M22x1.5, TIGHTENING TORQUE: 34 TO 40 Nm



General Specifications: JED-334-1 - Size ISO 14405 LP		Copyright WABCO®		
Further Technical Data: PRO 648 001 0		Date: 2022-06-01	Signature: Saravanan	
Doc. Code: O35	Sheet: 1 To 36	Checked: Palaniswamy	Expert: Kolkowski	
General Tolerances JED-261		Mass: 1.232 kg	Scale: 1:1	
Range of Nominal Dimensions (± mm)		Size: 26x	Revision: B	
Class	1) ≤ 50	2) > 50 < 180	3) > 180 < 400	4) > 400
Fine	0.5	1.0	1.5	2.0
Medium	X 1.0	2.0	3.0	4.0
Coarse	2.0	3.5	5.0	6.5
Tapped Holes acc. -		Material No.: PRO 648 002 0	Date of first issue: 2017-07-19	
1) Tolerance Class Applied Crossmarked		Doc. Code: 507937	Language: EN	
		Techn. Resp.: 5250_AM	Sheet: 1/1	

Tutti i diritti sono riservati. È vietata espressamente la ristampa o l'uso non autorizzato senza permesso scritto dalla WABCO. La WABCO non è responsabile per danni materiali o morali. Tutti i diritti sono riservati. È vietata espressamente la ristampa o l'uso non autorizzato senza permesso scritto dalla WABCO. La WABCO non è responsabile per danni materiali o morali.