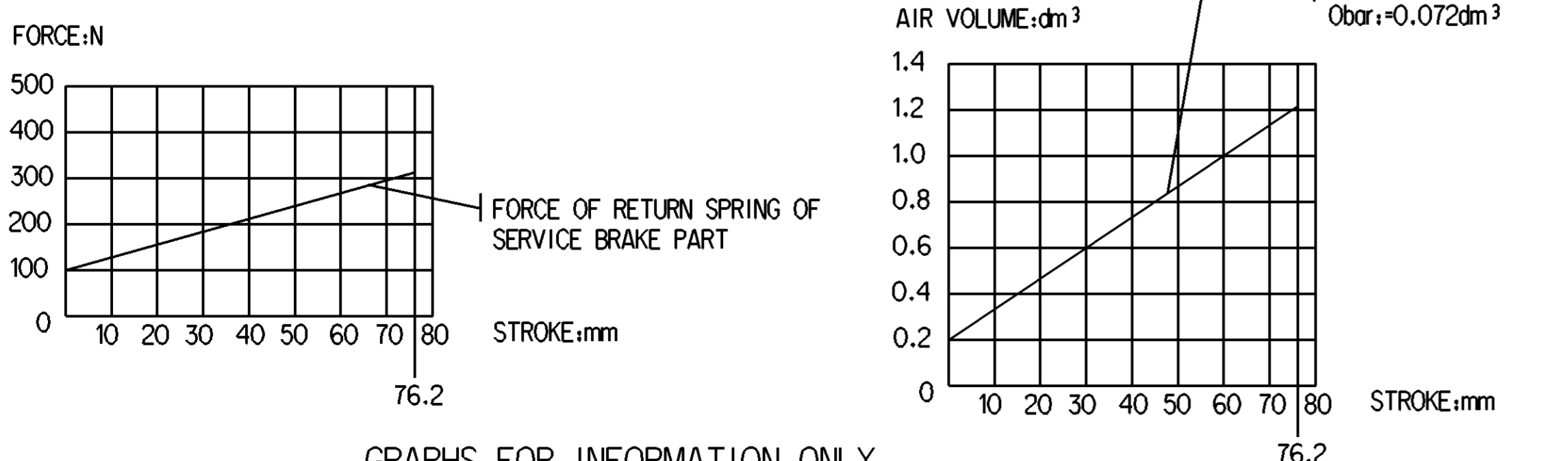
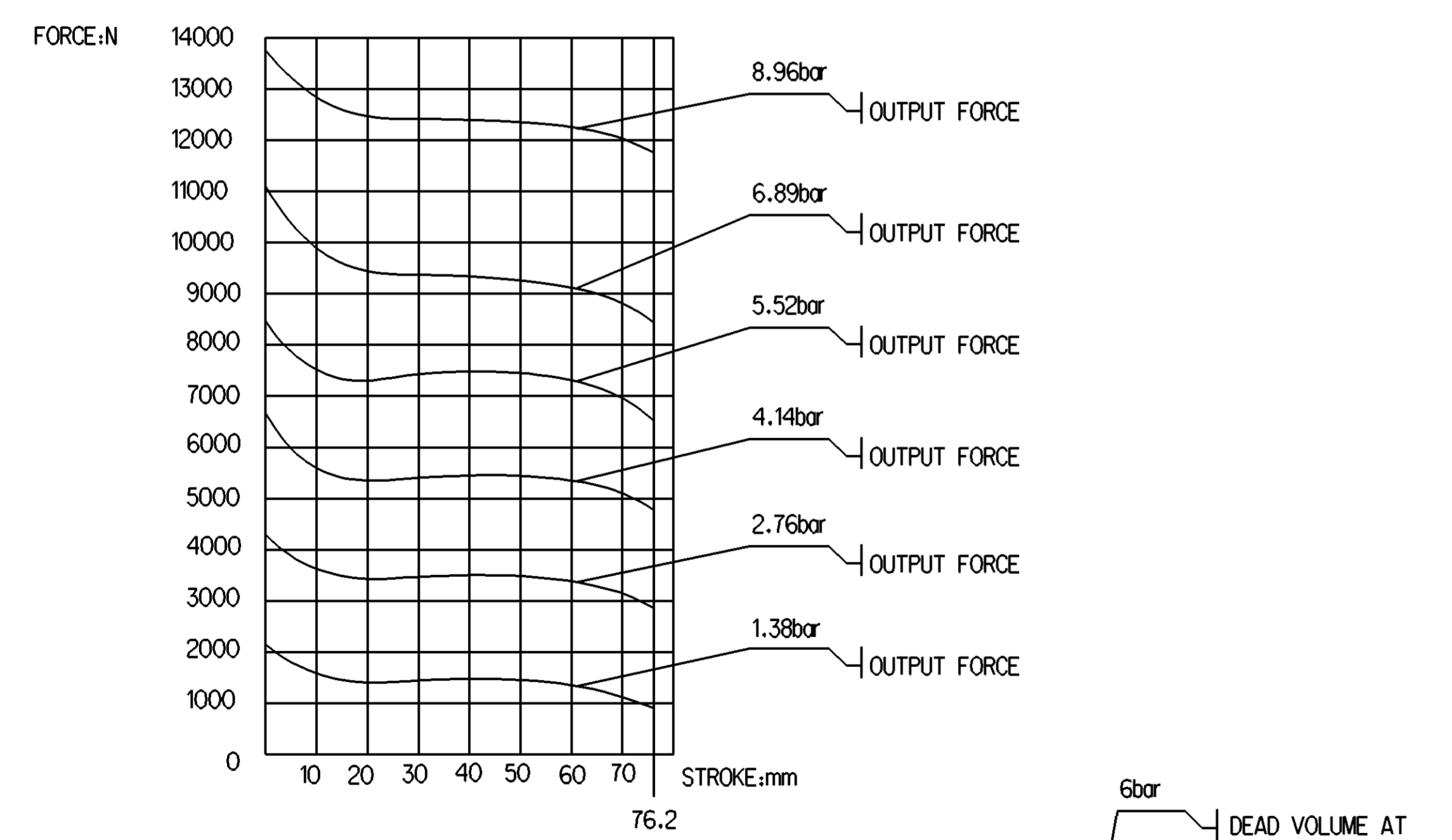
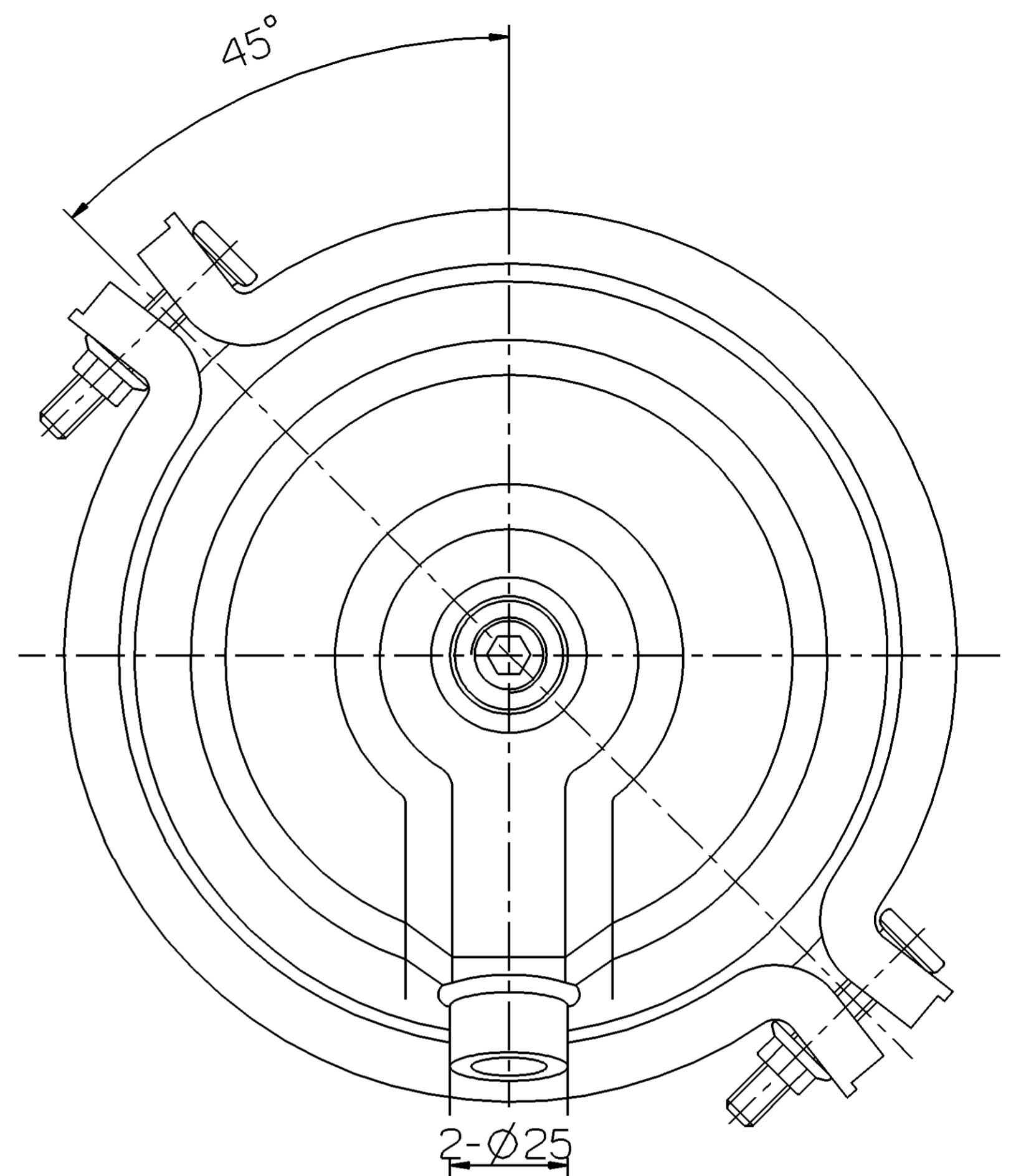
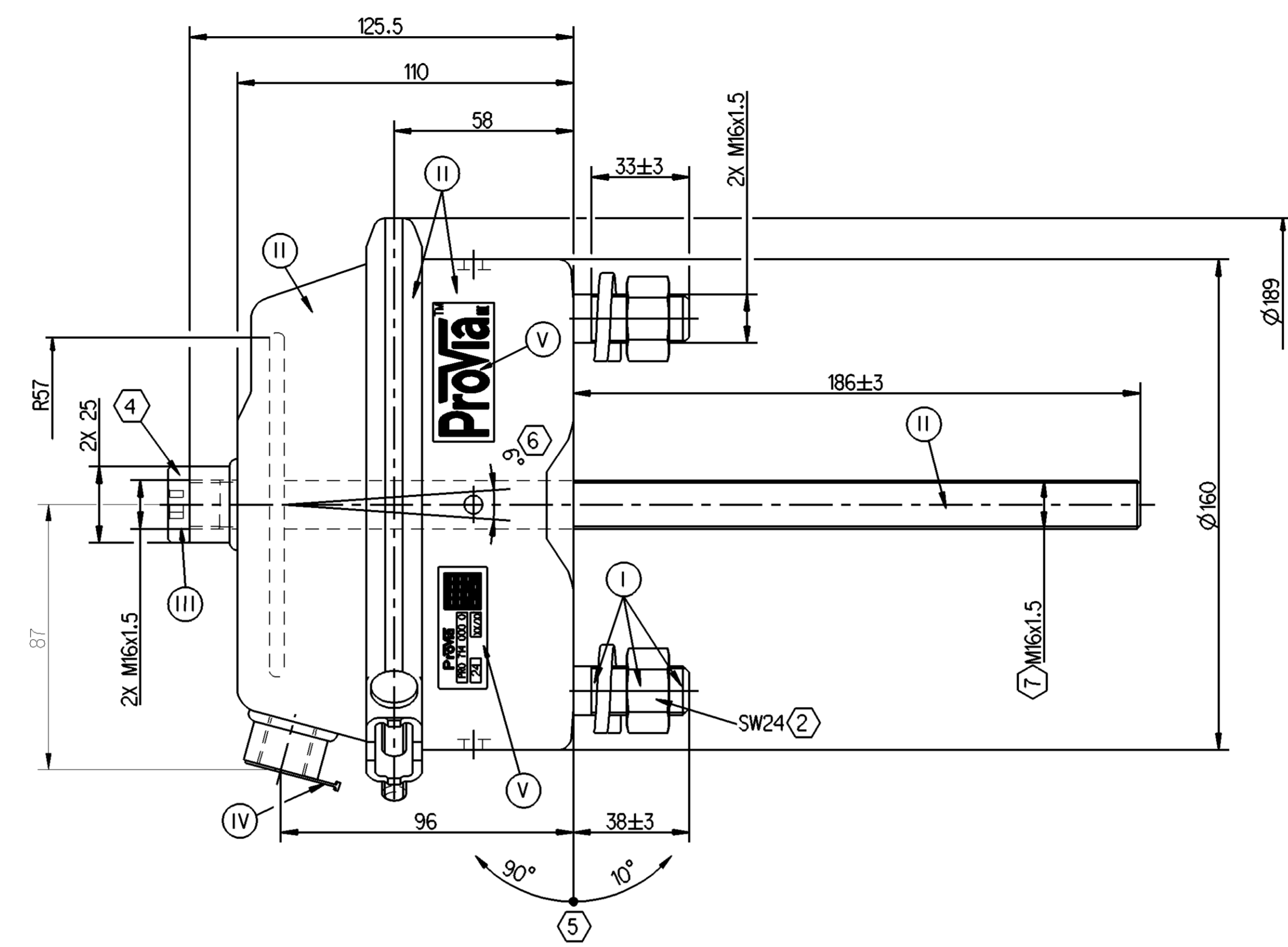
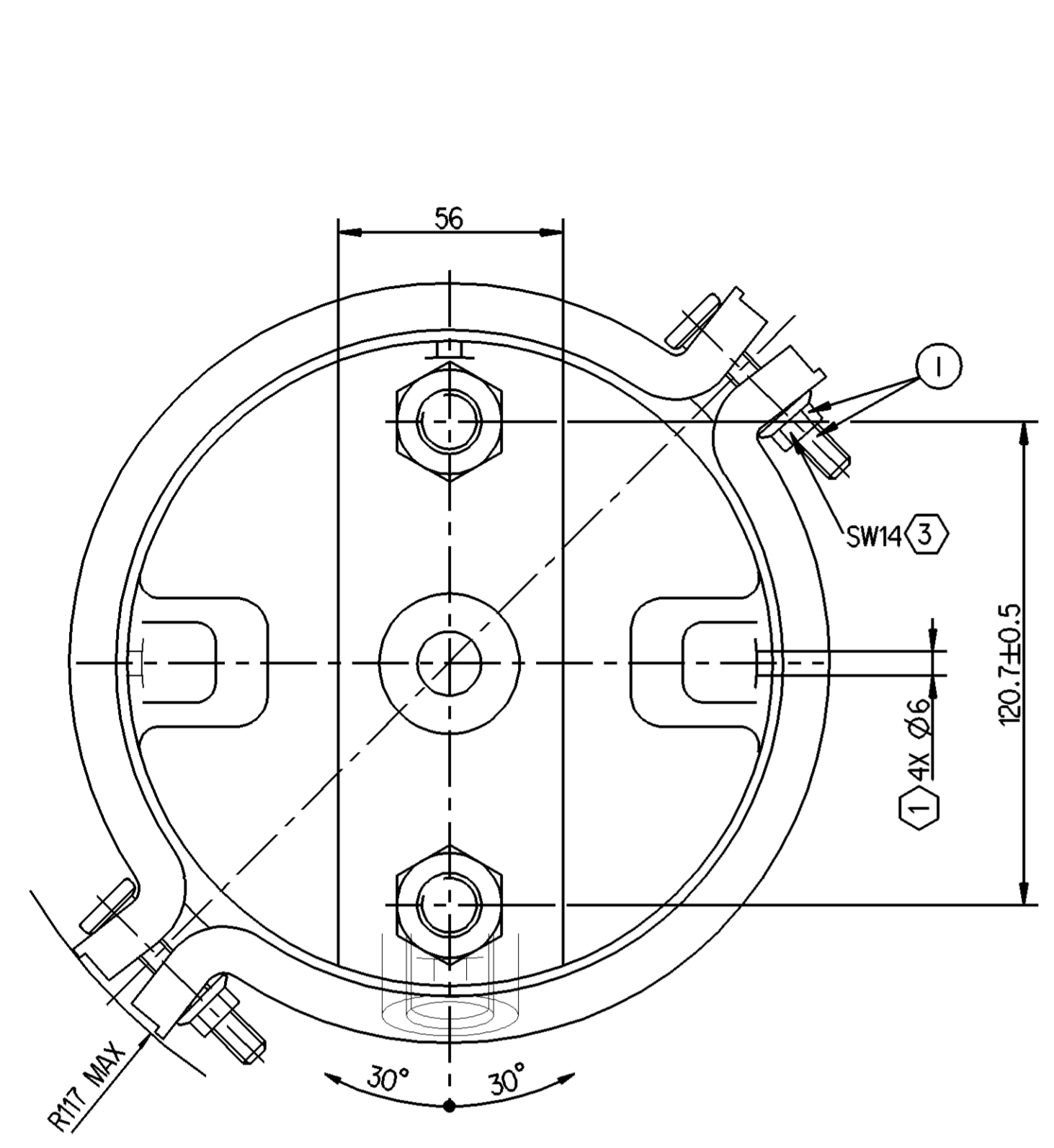


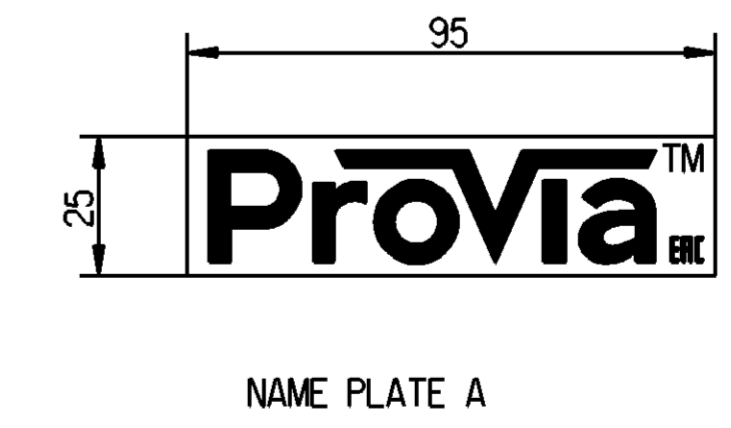
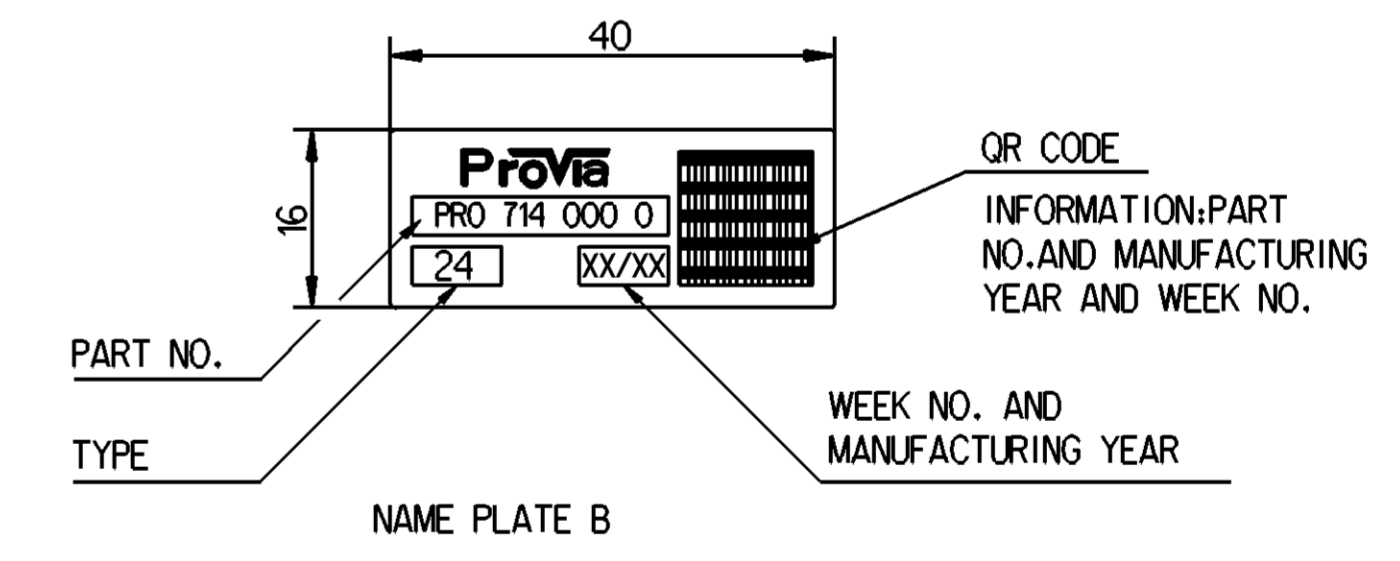
SURFACE PROTECTION	
I	ZINC PLATED WITH CR6+ FREE
II	ELECTRO-PAINTING
III	DACROMET
IV	HARD POLYETHYLENE
V	STICKER

<->	SAFETY CHARACTERISTICS	0
<->	SIGNIFICANT CHARACTERISTICS	0



- ① OPEN BREATHER HOLE
- ② TORQUE: 220±20 Nm
- ③ TORQUE: ≥25Nm
- ④ TORQUE: 45±5Nm
- ⑤ ADMISSIBLE INSTALLATION POSITION
- ⑥ DEFLECTION: 6° MAX AT STROKE:0 mm
- ⑦ TORQUE: 80±10Nm

- TECHNICAL REQUIREMENT:REQUIREMENT:**
- 1.STROKE:≥76.2mm;
  - 2.WORKING PRESSURE: Pmax. 8.5 bar, Temporarily 10 bar;
  - 3.WORKING TEMPERATURE:-40°C...+80°C (-40°F...+176°F);



General Specifications		Copyright WABCO®		ProVia	
Further Technical Data: Pro 714 016 0		Date:	2019-09-20	Drawn:	Saravanan
Doc. Code: 035		Sheet:	01	To:	05
General Tolerances JED-261		Checked:		2019-10-04 Yerahachelvan	
Range of Nominal Dimensions ( ± mm)		Expert:		Aswin kumar	
Class	1)	≤ 50	> 50 &lt; 180	> 180 &lt; 400	> 400
Fine	X	0.5	1.0	1.5	2.0
Medium	X	1.0	2.0	3.0	4.0
Coarse	X	2.0	3.5	5.0	6.5
Tapped Holes acc. JED-152		Mass	3.6	Scale	1:1
1) Tolerance Class Applied Crossmarked		Size	CAD System	Material No.	PRO 714 000 0
		Date of first issue:	2019-10-04	Doc.Code	005
		Language	EN	Sheet	1/1

Non è permesso copiare o riprodurre questo documento, né utilizzare il contenuto a fini commerciali, senza permesso scritto dalla WABCO. Tutti i diritti sono riservati. Toute réimpression ou utilisation non autorisée sans la permission écrite de la WABCO est formellement interdite. Toute utilisation non autorisée sera considérée comme acte de contrefaçon et sera poursuivie en justice.