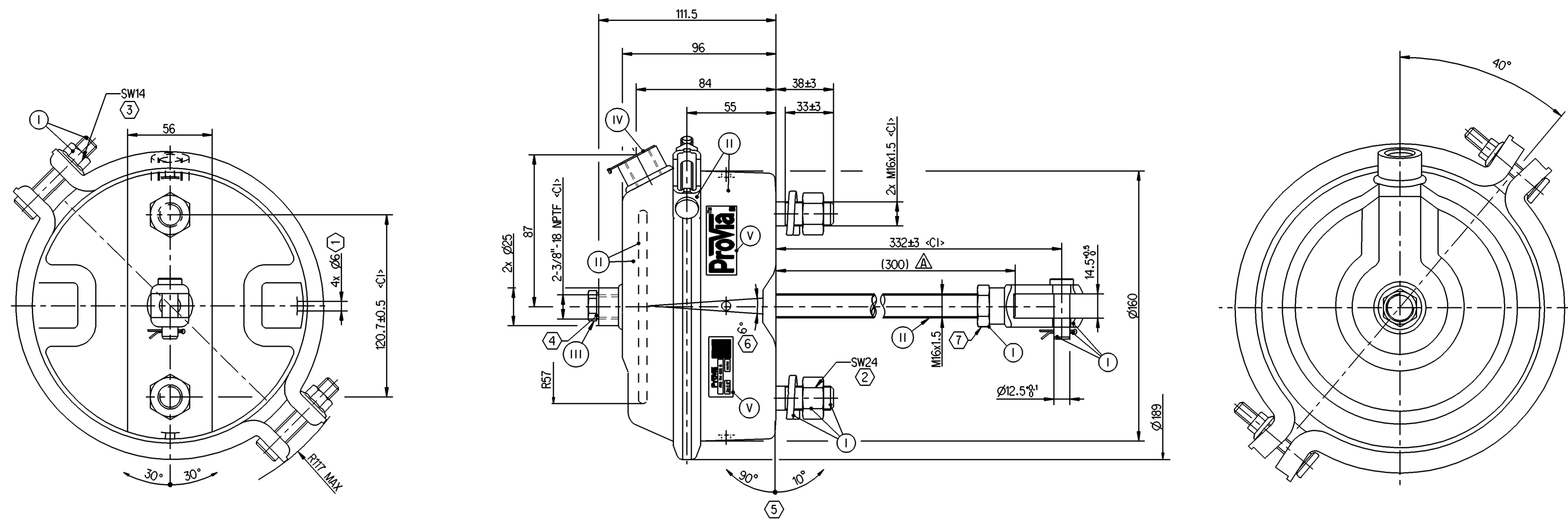
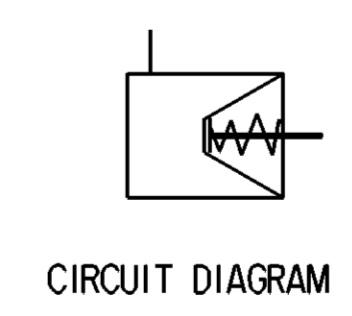
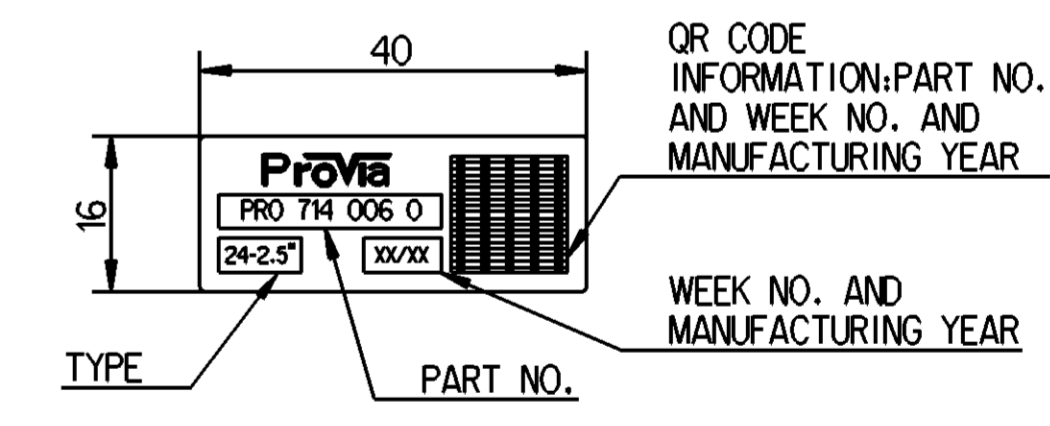
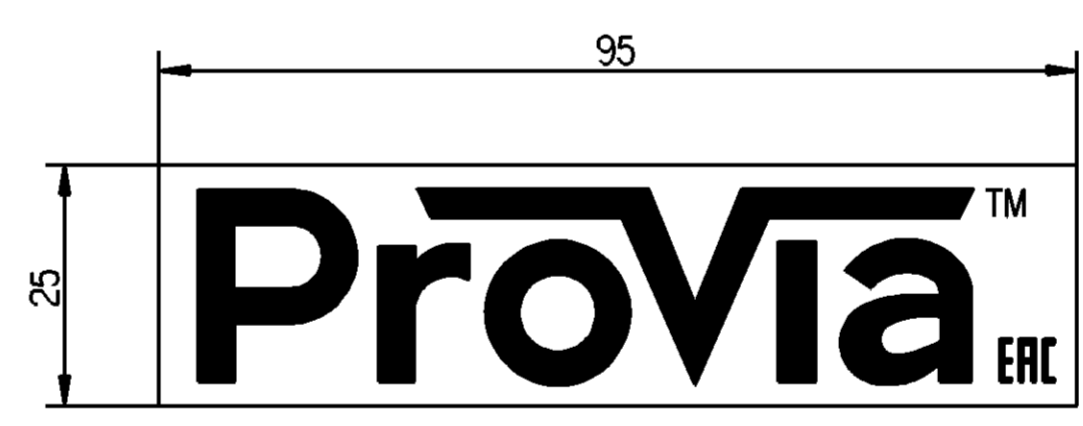
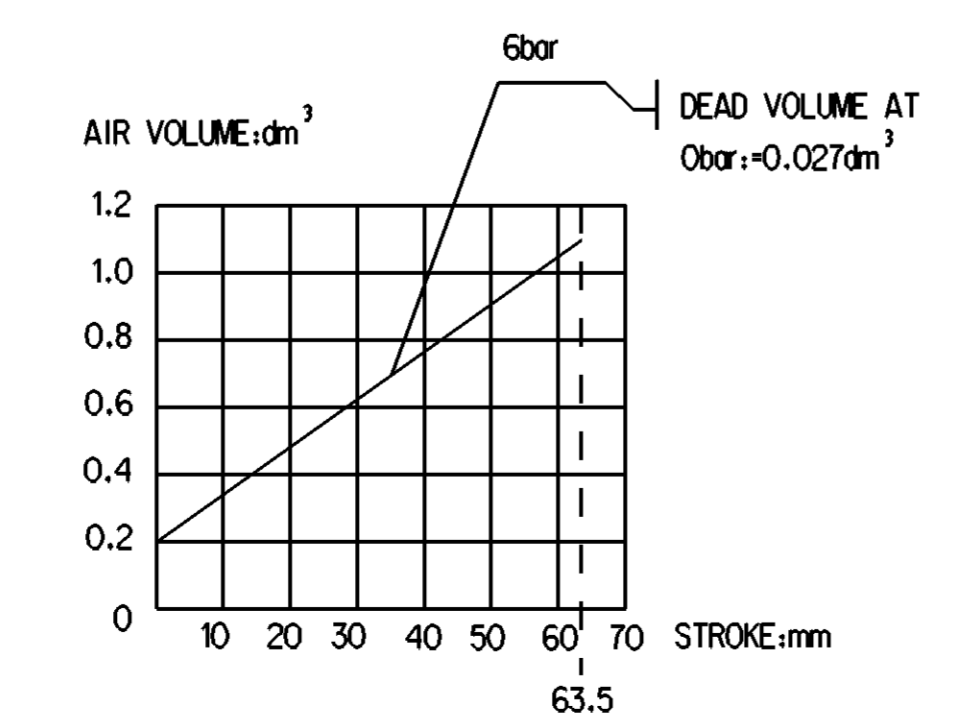
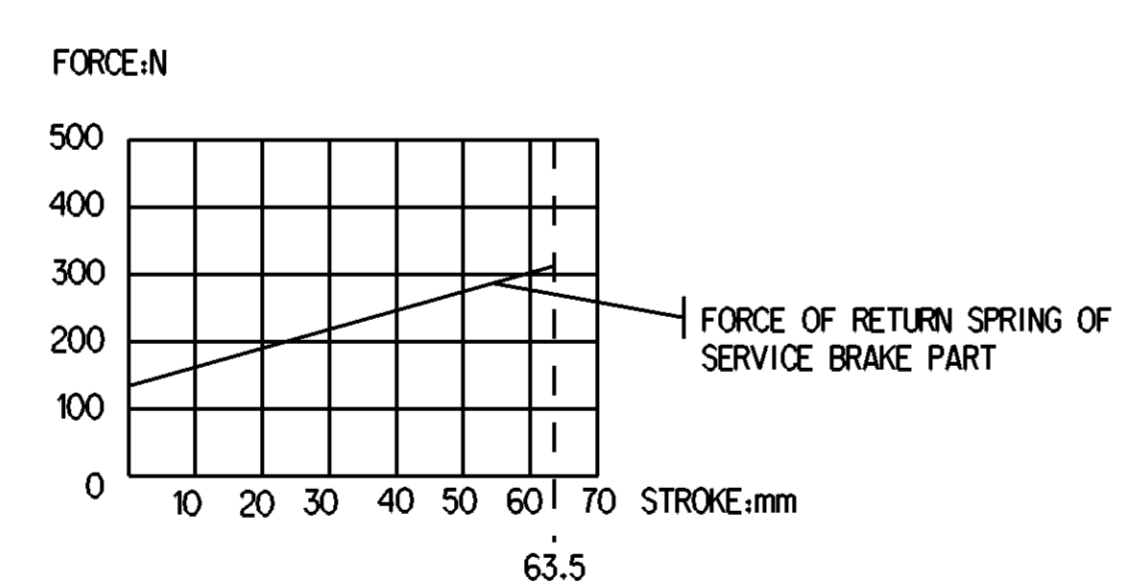
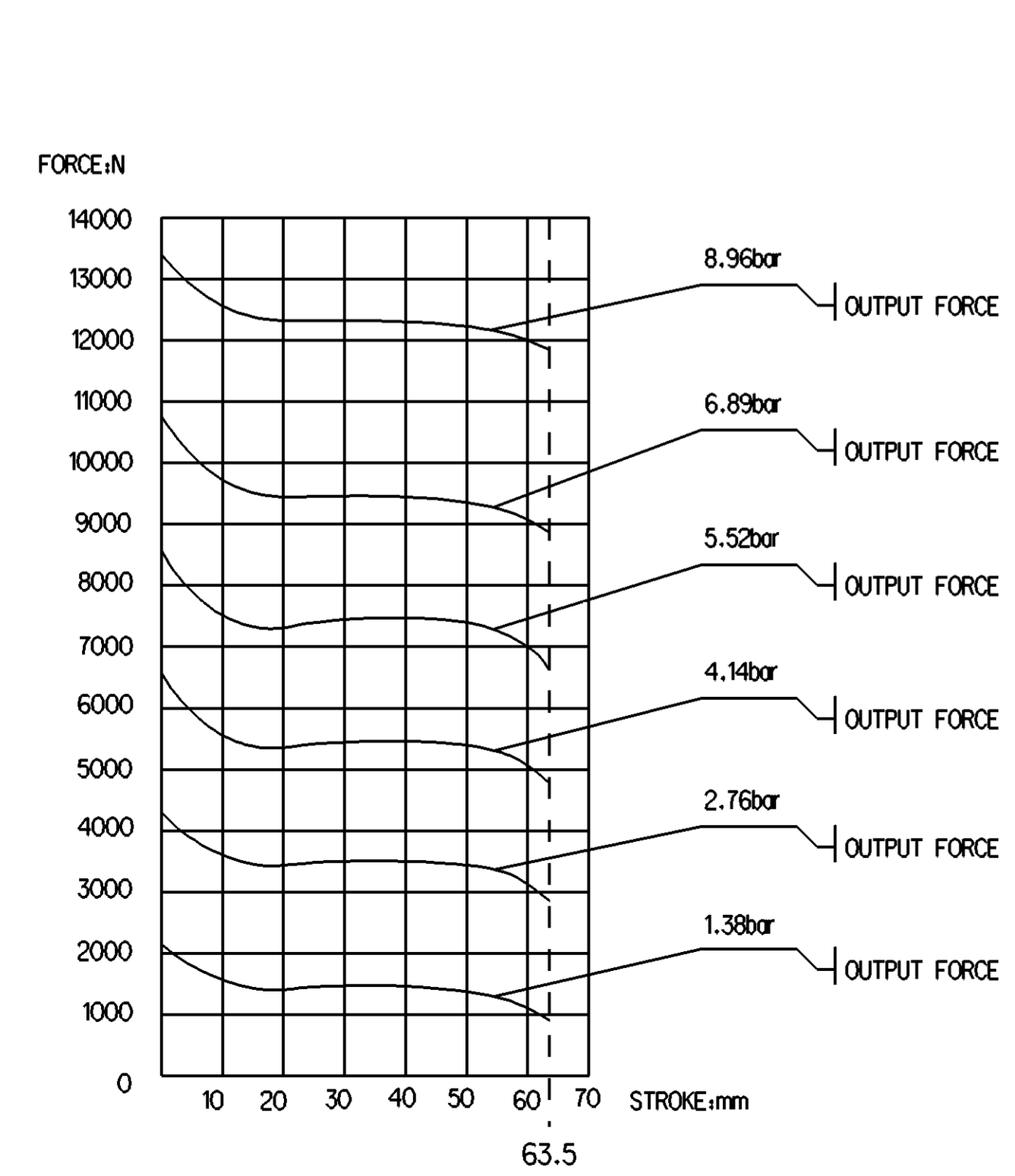


| SURFACE PROTECTION |                            |
|--------------------|----------------------------|
| I                  | ZINC PLATED WITH CR6+ FREE |
| II                 | ELECTRO-COATING            |
| III                | DACROMET                   |
| IV                 | HARD POLYETHYLENE          |
| V                  | STICKER                    |

|                             |   |
|-----------------------------|---|
| SAFETY CHARACTERISTICS      | 0 |
| SIGNIFICANT CHARACTERISTICS | 0 |
| CUSTOMER INTERFACE          | 4 |



GRAPHS FOR INFORMATION ONLY



- TECHNICAL REQUIREMENT:
1. STROKE:  $\geq 63.5$ mm (2.5")
  2. WORKING PRESSURE  $P_{MAX}$ : 8.5BAR TEMPORARILY: 10BAR
  3. WORKING TEMPERATURE:  $-40^{\circ}\text{C} \dots +80^{\circ}\text{C}$  ( $-40^{\circ}\text{F} \dots +176^{\circ}\text{F}$ )
  4. WORKING MEDIUM: AIR  $\Delta$
- ① OPEN BREATHER HOLE
  - ② TORQUE:  $220 \pm 20$ Nm
  - ③ TORQUE:  $\geq 25$ Nm
  - ④ TORQUE:  $45 \pm 5$ Nm
  - ⑤ ADMISSIBLE INSTALLATION POSITION
  - ⑥ DEFLECTION: 6° MAX AT STROKE 0mm
  - ⑦ TORQUE:  $80 \pm 10$ Nm

| General Specifications: ISO 8015, JED-334-1, Size ISO H4405 LP |               | Copyright WABCO®                |                     | ProVia                   |                 |
|--|---------------|---------------------------------|---------------------|--------------------------|-----------------|
| Further Technical Data: PRO 714 016 0                          |               | Date:                           | Signature:          | BRAKE CHAMBER CAM 24     |                 |
| Doc. Code: 035   | Sheet: 1 To 5 | 2023-05-05                      | Venkateshram        |                          |                 |
| General Tolerances JED-261                                     |               | 2023-05-08                      | Manivannan          |                          |                 |
| Range of Nominal Dimensions (± mm)                             |               | Dimensions in mm                |                     |                          |                 |
| Class  | 1) $\leq 50$  | 2) $> 50 \leq 180$              | 3) $> 180 \leq 400$ | 4) $> 400$               | $\Delta$        |
| Fine   | $\pm 0.5$     | $\pm 1$                         | $\pm 1.5$           | $\pm 2$                  | $\pm 3^{\circ}$ |
| Medium   | $\pm 1$       | $\pm 2$                         | $\pm 3$             | $\pm 4$                  |                 |
| Coarse   | $\pm 2$       | $\pm 3.5$                       | $\pm 5$             | $\pm 6.5$                |                 |
| Tapped Holes acc. JED-686                                      |               | Mass Scale                      |                     | Material No.             |                 |
| 1) Tolerance Class Applied Crossmarked                         |               | A 1                             | CREO                | PRO 714 006 0            |                 |
|  |               | EDN-No.                         | Revision            | Techn. Resp.             | Replacement for |
|  |               | 514015                          | 4x A                | 5340_AM                  | -               |
|  |               | Date of first issue: 2019-10-04 |                     | Doc. Code Language Sheet |                 |
|  |               |                                 |                     | 005 EN 1/1               |                 |