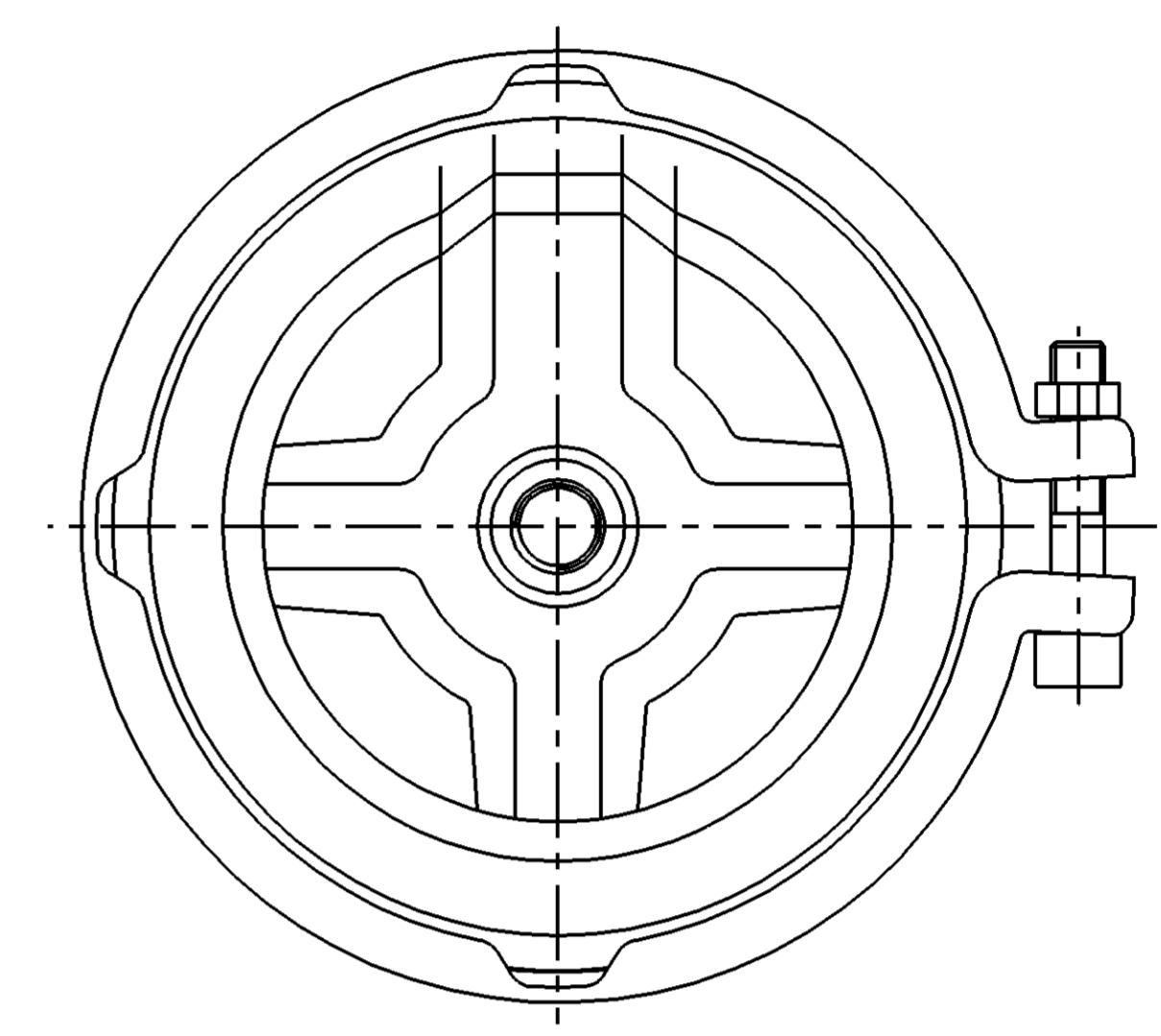
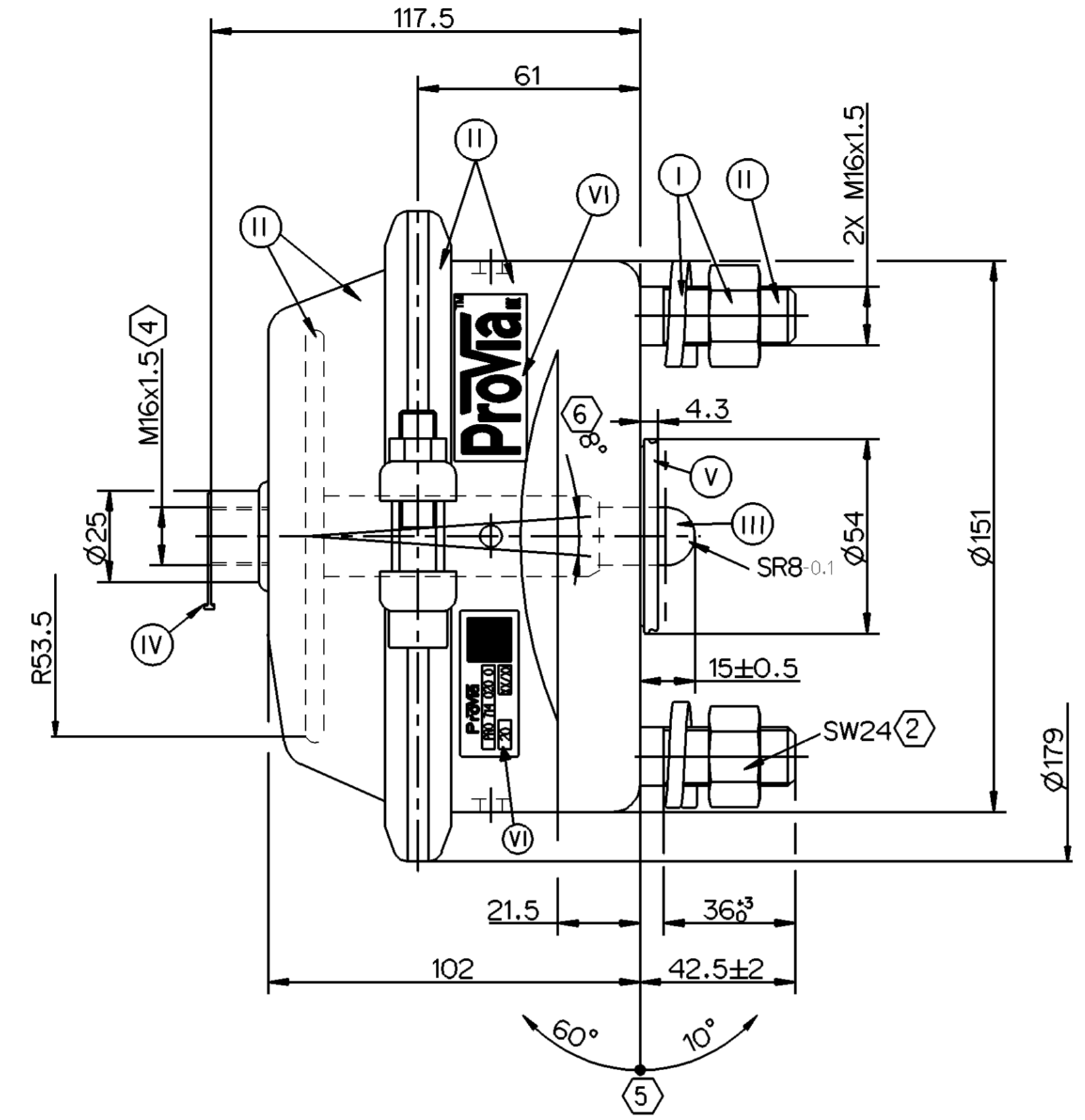
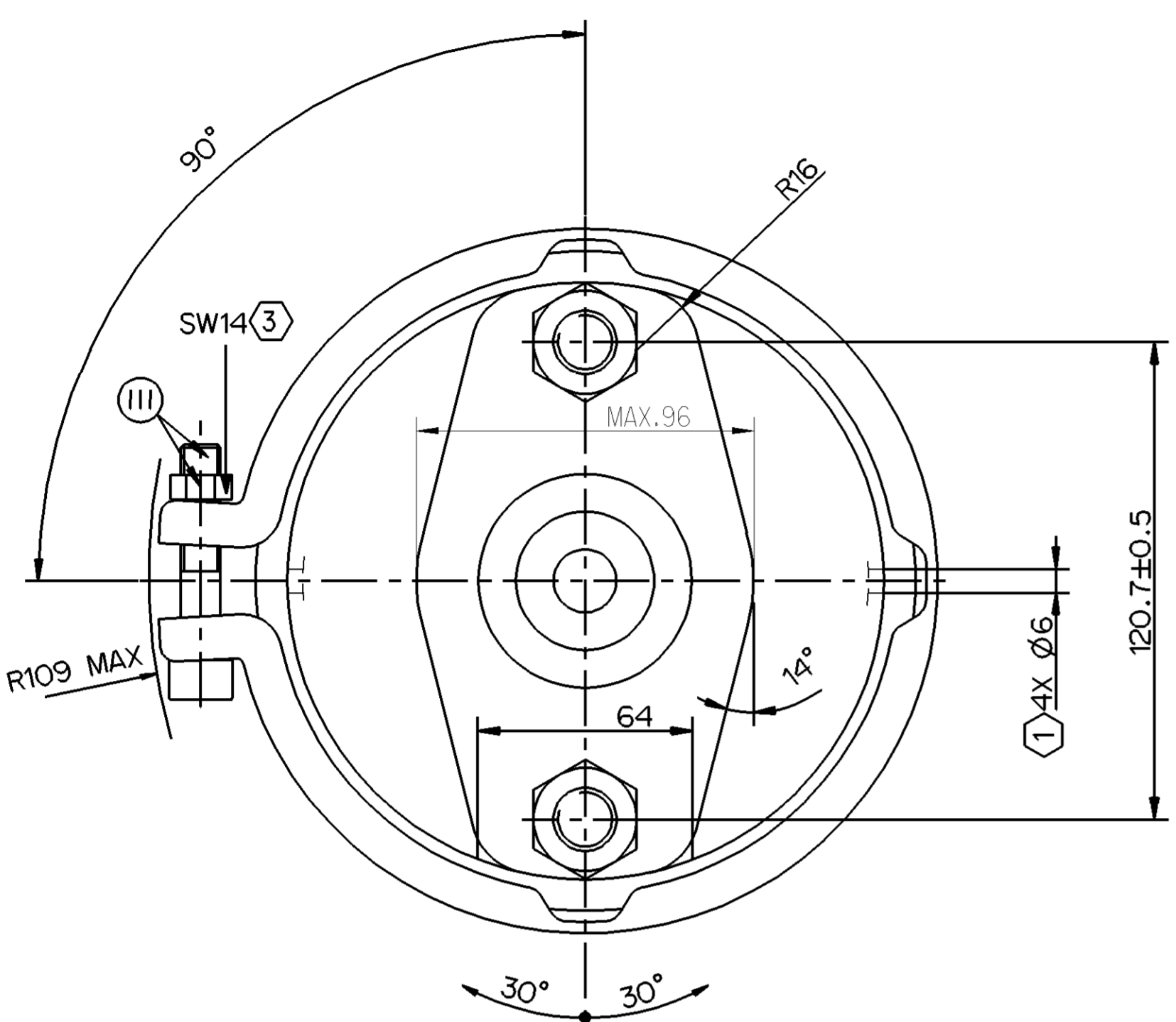
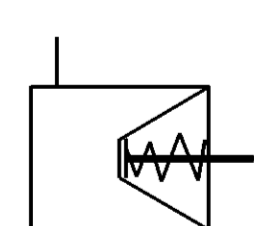
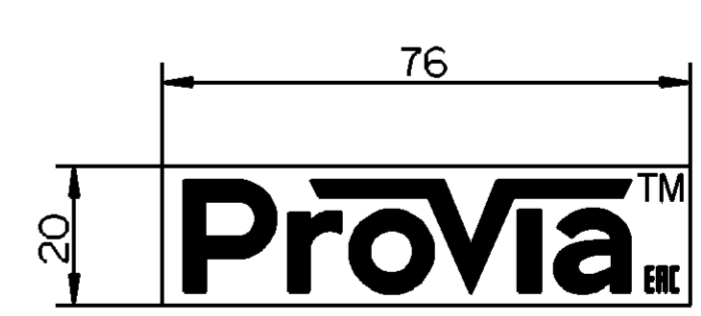
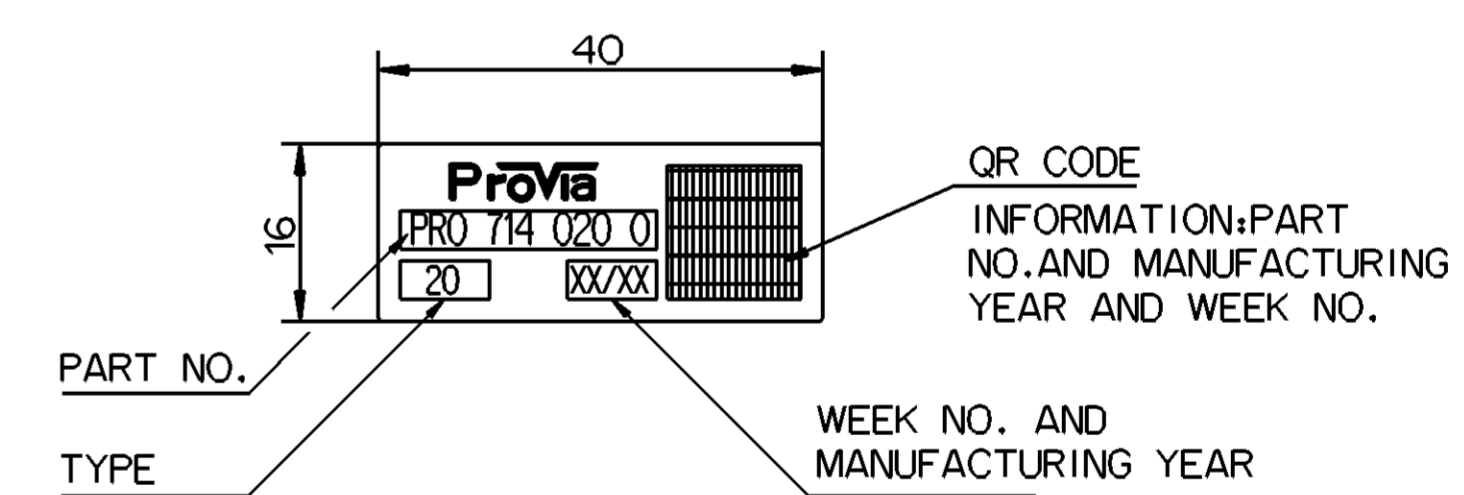


SURFACE PROTECTION	
I	ZINC PLATED WITH CR6+ FREE
II	ELECTRO-PAINTING
III	DACROMET
IV	HARD POLYETHYLENE
V	RUBBER
VI	STICKER

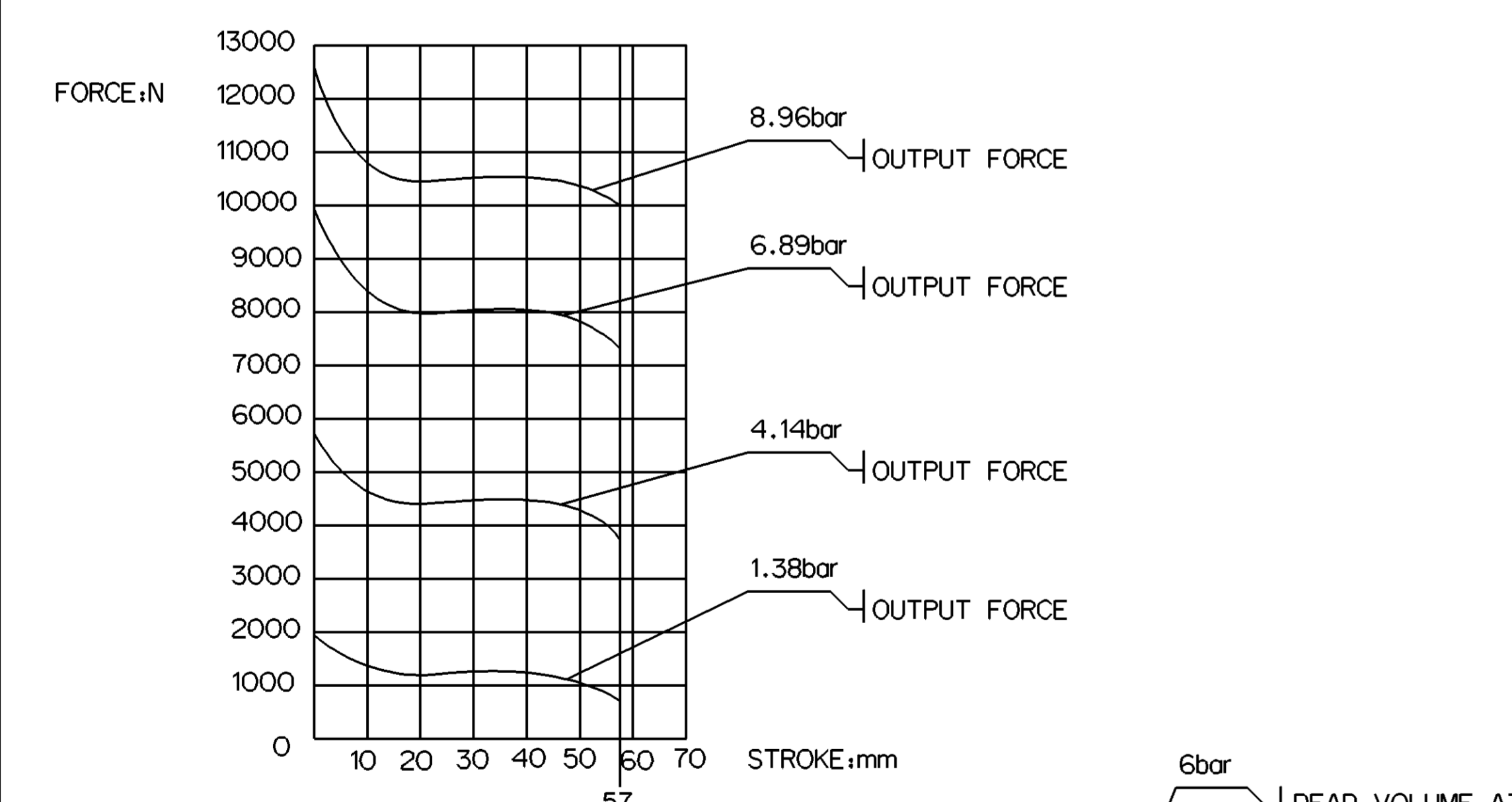
← SAFETY CHARACTERISTICS	0
↔ SIGNIFICANT CHARACTERISTICS	0



- ① OPEN BREATHER HOLE
- ② TORQUE: 220±20 Nm
- ③ TORQUE: ≥35Nm
- ④ TORQUE: 45±5Nm
- ⑤ ADMISSIBLE INSTALLATION POSITION
- ⑥ DEFLECTION: 8° MAX AT STROKE±0 mm



- TECHNICAL REQUIREMENT-REQUIREMENT:**
- 1.STROKE: ≥57.1mm;
  - 2.WORKING PRESSURE: Pmax. 10.2 bar. Temporarily 13 bar;
  - 3.WORKING TEMPERATURE: -40°C...+80°C(- 40°F...+176 °F ) ;



GRAPHS FOR INFORMATION ONLY

General Specifications: JED-334-1 - Size ISO 14405 LP		Copyright WABCO®		<b>ProVia</b>	
Further Technical Data: Pro 714 710 0		Date	Signature	BRAKE CHAMBER DISC 20	
Doc. Code: 035	Sheet: 01 To 05	2019-05-29	Saravanan		
General Tolerances JED-261		2019-07-12		Yerachaelvan	
Range of Nominal Dimensions ( ± mm)		Expert			
Class	1) ≤ 50	> 50	> 180	±3°	
Fine	0.5	1.0	1.5		
Medium	1.0	2.0	3.0		
Coarse	2.0	3.5	5.0		
Tapped Holes acc. JED-152		Mass	Scale	Material No.	
1) Tolerance Class Applied Crossmarked		3.3	1:1	PRO 714 020 0	
		Size	CAD System	Doc.No.	Revision
		A 1	CREO	5350_AM	Techn. Resp.
				Date of first issue:	2019-07-12
				Doc.Code	Language
				005	EN
				Sheet	1/1

Non è permesso copiare o riprodurre questo documento, né utilizzare il contenuto a fini commerciali, senza permesso scritto dalla WABCO. È vietata espressamente la ristampa o l'uso non autorizzato. Tutti i diritti sono riservati. WABCO e ProVia sono marchi registrati. Tutti i diritti sono riservati.