

THERMAL RANGE OF APPLICATION
THERMISCHER ANWENDUNGSBEREICH
GAMME D'APPLICATION THERMIQUE
CAMPO DI APPLICAZIONE TERMICA

-40°C....+80°C
MAX. TEMP. 100°C
ADMISSIBLE DURING LIMITED
PERIOD OF 20h

TORQUE FOR CONNECTIONS
ANZUGSMOMENT FÜR EINSCHRAUBSTUTZEN
COUPLE DE SERRAGE DES RACCORDS
COPPIA DI SERRAGGIO DEI RACCORDI

30 Nm MAX

- ① INLET
VORRAT
ALIMENTATION
ALIMENTAZIONE (HIGH PRESSURE)
(HOCHDRUCK)
(HAUTE PRESSION)
(ALTA PRESSIONE)
- ② DELIVERY
AUSGESTEURTE LUFT
UTILISATION
UTILIZZAZIONE (LOW PRESSURE)
(NIEDERDRUCK)
(BASSE PRESSION)
(BASSA PRESSIONE)
- ③ EXHAUST
ENTLUEFTUNG
ECHAPPEMENT
SCARICO

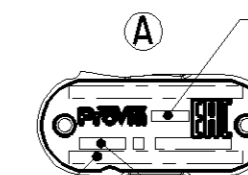
DELIVERY PRESSURE
AUGESTFUERTER
PRESSION D'UTILISATION
PRESSIONE D'UTILIZZAZIONE P2=3.5+0.2/0 bar FOR
FUER P1=8 bar
POUR PER

OPENING OF SAFETY VALVE
OEFFNUNG DES SICHERHEITSVENTILS
OUVERTURE DE LA SOUPEPE DE SECURITE P2+2.5 bar (MAX)
APERTURA DELLA VALVOLA DI SICUREZZA

NOMINAL DIAMETER MIN.
MIN. FREIER DURCHGANG
DIAMETRE NOMINAL MIN.
DIAMETRO NOMINALE MIN. 10 mm (78.5 mm²)

MEDIUM
MEDIUM
FLUIDE
FLUIDE AIR
LUFT
AIR
ARIA

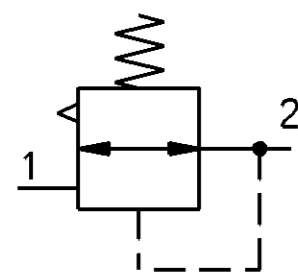
NAME PLATE DETAILS



MANUFACTURING PLANT:
PRODUKTIONSSTAETTE: JED-225
LIEU DE FABRICATION:
LUOGO DI FABRIZAZIONE:

ProVia IDENTIFICATION NUMBER
ProVia TEILE NUMBER
NUMERO D'IDENTIFICATION ProVia
NUMERO D'IDENTIFICAZIONE

WEEK / YEAR OF MANUFACTURE
FERTIGUNGSWOCHE / JAHR
SEMAINE / ANNEE DE FABRICATION
SETTIMANA / ANNO DELLA FABRIZAZIONE



General Specification: JED-334-1, Size ISO 14405 LP		Copyright WABCO®		ProVia		
Further Technical Data:		Date	Signature	PRESSURE LIMITING VALVE		
Doc. Code: Sheet: To:		2018-09-19	Aswinkumar	DRUCKBEGRENZUNGSVENTIL		
General Tolerances JED-261		Checked		VALVE DE LIMITATION DE PRESSION		
Range of Nominal Dimensions (± mm)		2018-09-20		VALVOLA LIMITATRICE DI PRESSIONE		
Class	1) ≤ 50 > 50 > 180 > 180 > 400 > 400	Expert		K P NAGARAJAN		
Fine	0.5 1.0 1.5 2.0	Mass	Scale	Material No.		
Medium	1.0 2.0 3.0 4.0	0.376	1:1	PRO 015 004 0		
Coarse	2.0 3.5 5.0 6.5	kg		Date of first issue: 2015-11-20		
Tapped Holes acc. JED-152		Size	CAD System	Doc.Code Language Sheet		
1) Tolerance Class Applied Crossmarked		A 2	CREO	005 ML 1/1		
		ECN-No. Revision Techn. Resp.		Replacement for		
		177205 1 A 5160_AM				

Non e permesso consegnare o terzi o riprodurre questo documento, ne utilizzare il contenuto o renderlo comunque noto a terzi senza autorizzazione esplicita. Ogni infrazione costituisce un evidente abuso e comportera il risarcimento dei danni subiti. E' fatta riserva di tutti i diritti derivanti da brevetti o modelli.

Copying of this document and giving it to others and the use or communication of the contents thereof, are forbidden without express authority. Contravention of this restriction will constitute an evident abuse and result in a liability to the payment of damages. All rights are reserved in the event of the grant of patent or registration of a utility model or design. This document is the subject of copyright.

Toutte communication ou reproduction de ce document, toute exploitation ou communication de son contenu sont interdites, sauf autorisation expresse. Tout manquement a cette regle constitue un abus evident et expose son auteur au versement de dommages et interets. Tous droits de proprieite industrielle reserves, notamment en matiere de brevets et de modesles.

Wiedergabe sowie Vervielfältigung dieser Unterlagen, Verleihen und Mitteilung ihres Inhalts nicht gestattet, soweit nicht ausdrücklich ansonsten, weitergegeben, stellen eine offensichtliche Missbrauch dar und verpflichten zu Schadensersatz. Alle Rechte für den Fall der Patenterteilung oder Gebrauchsmuster-Eintragung vorbehalten.