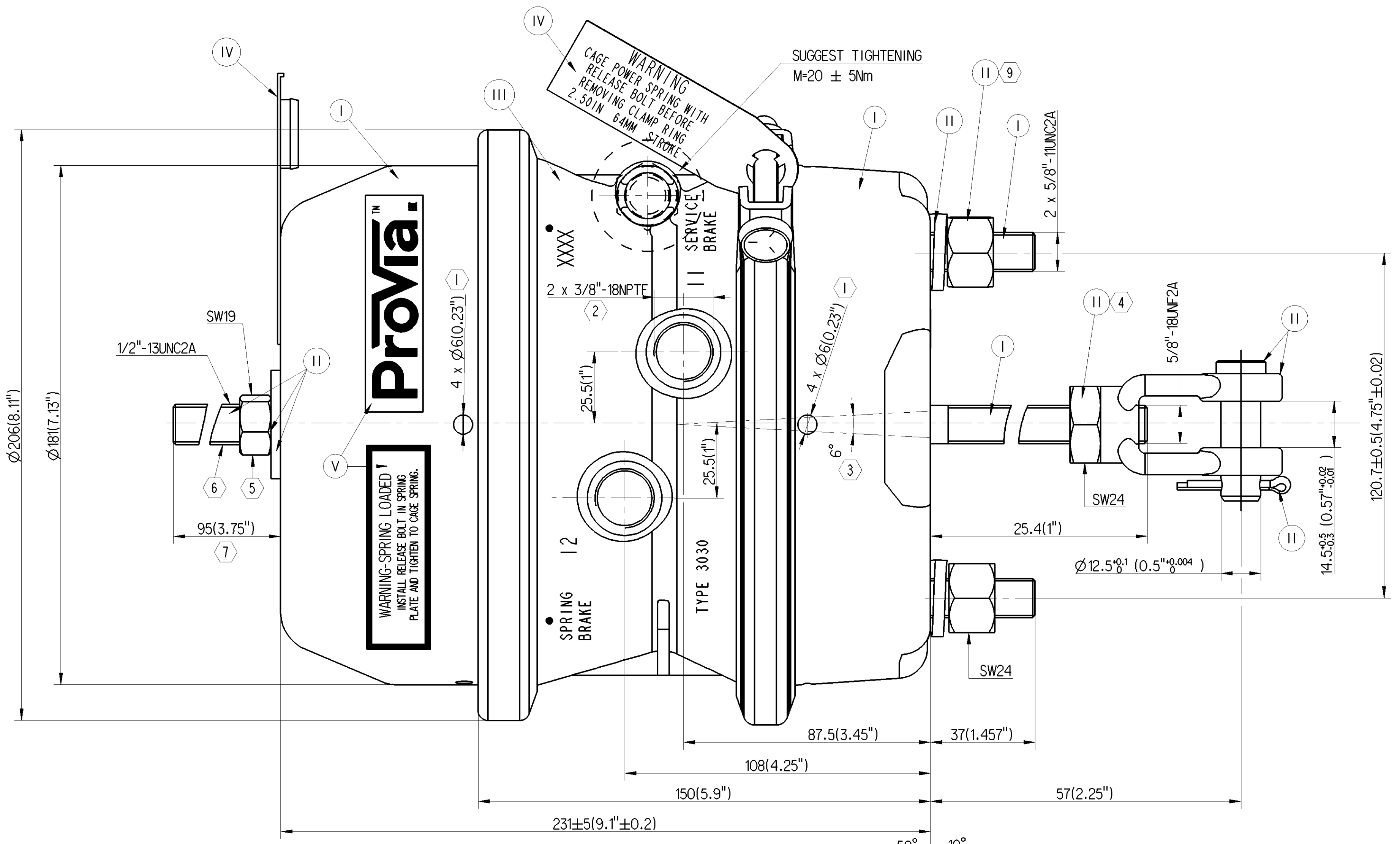
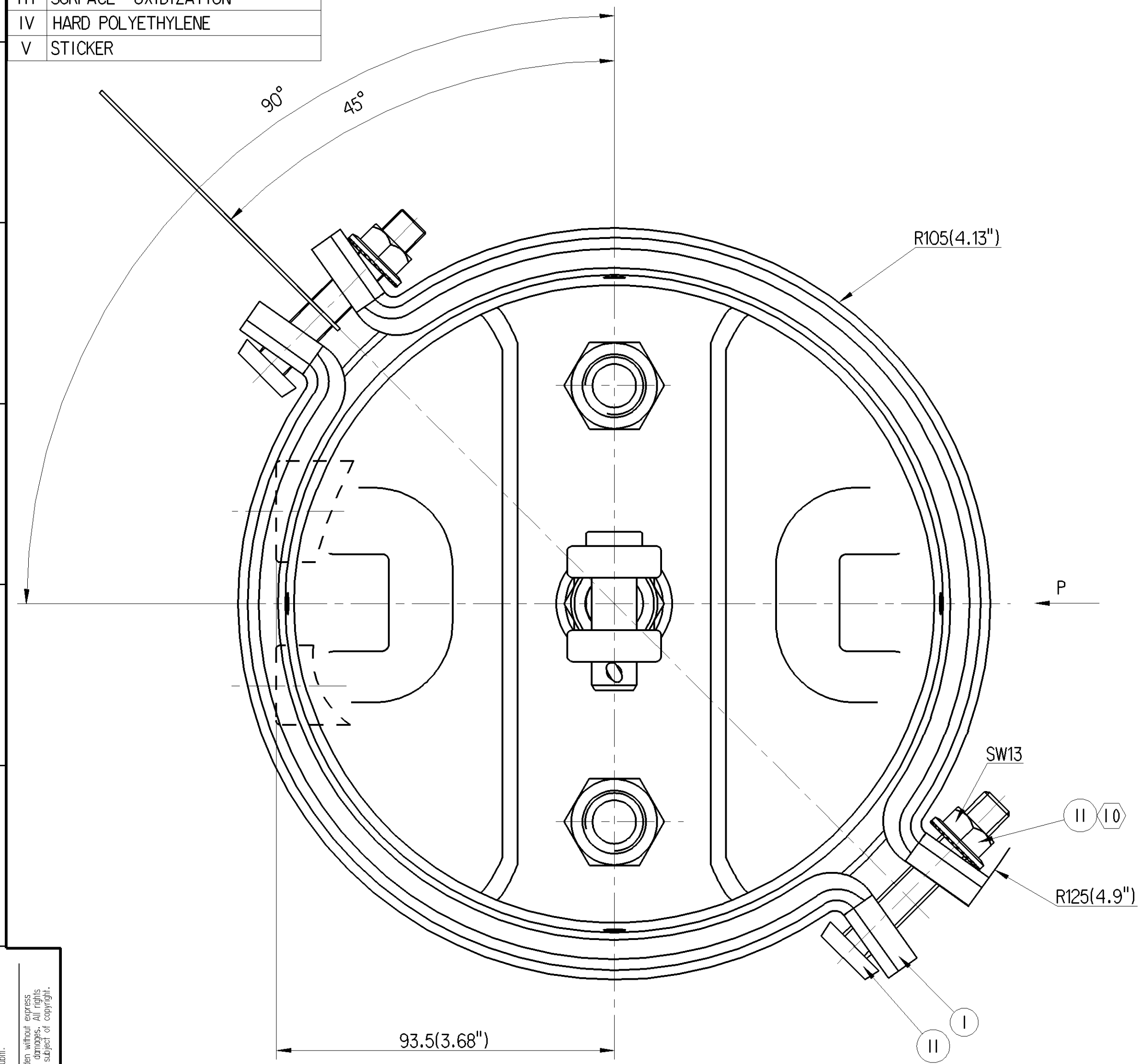
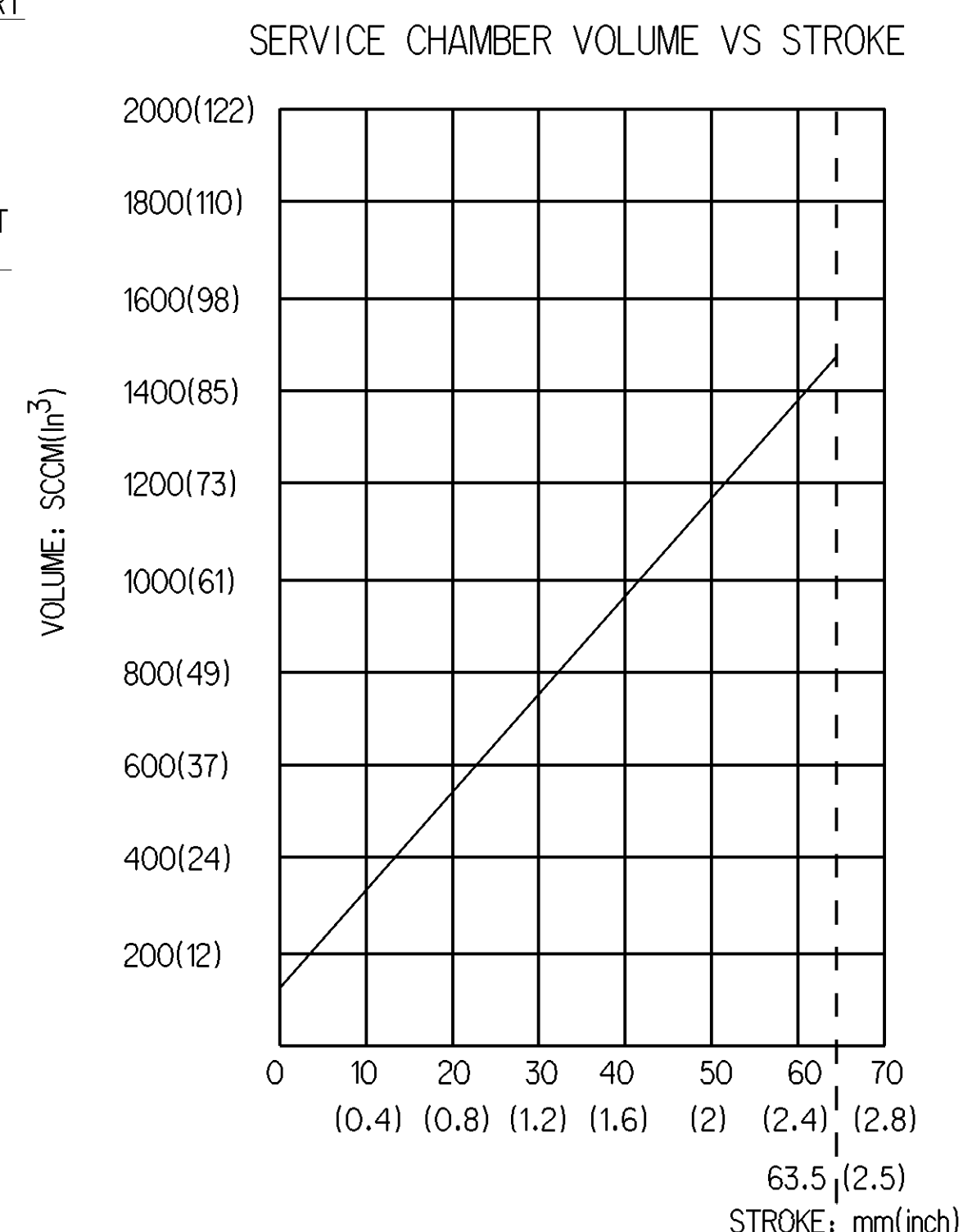
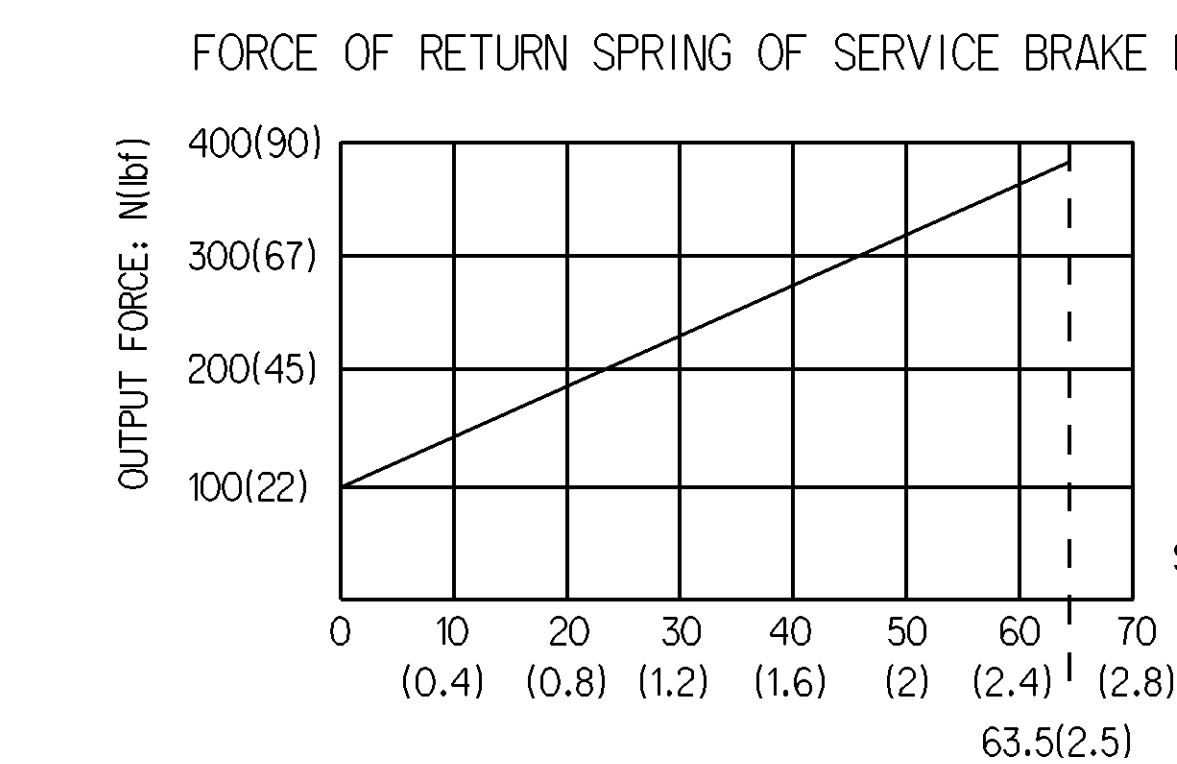
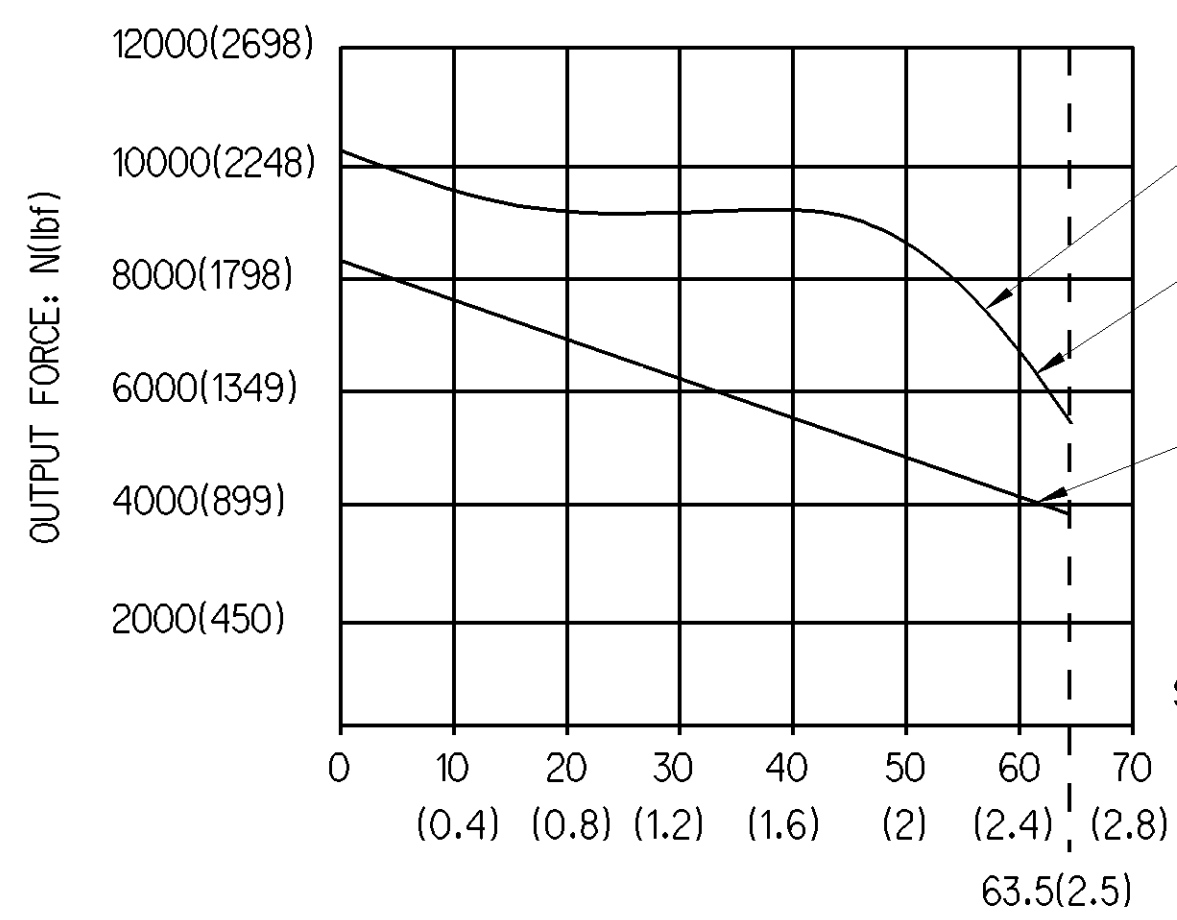


EXTERNAL SURFACE	
I	ELECTRO-PAINTING
II	ZINC PLATED WITH CR6+ FREE
III	SURFACE OXIDIZATION
IV	HARD POLYETHYLENE
V	STICKER



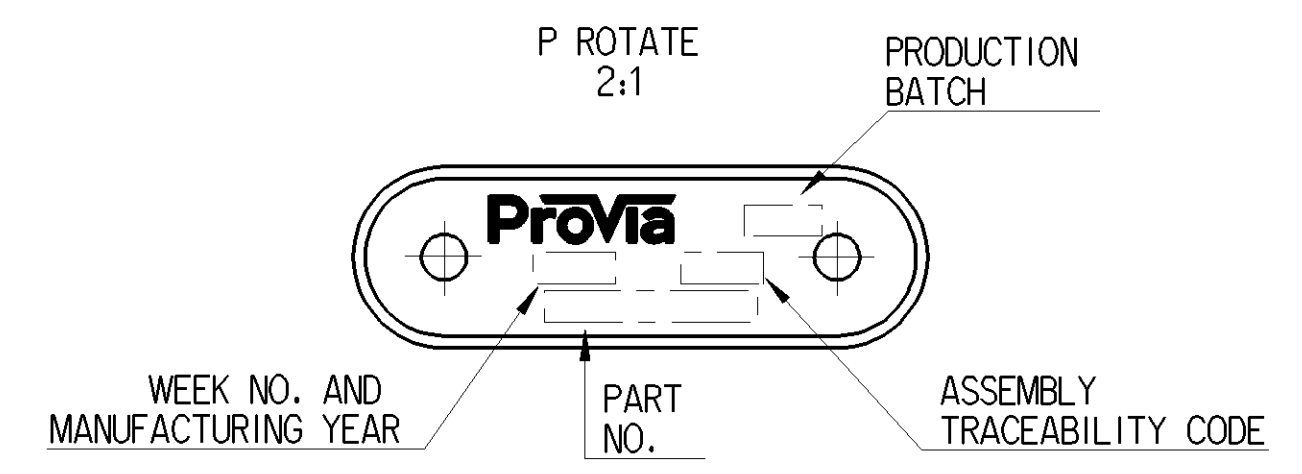
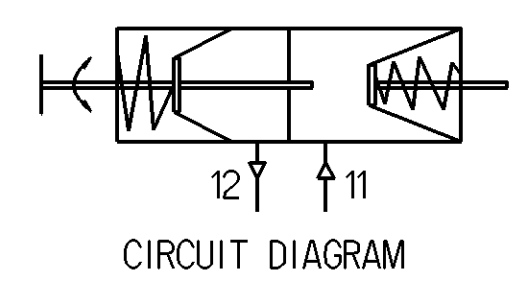
Non e permesso copiare o riprodurre questo documento, ne utilizzare i contenuti a fini commerciali, senza permesso scritto dalla WABCO. E' vietata espressamente la ristampa o l'uso non autorizzato di questo documento. Toute reproduction ou utilisation non autorise sans la permission de la WABCO est formellement interdite. Toute utilisation non autorise de ce document est formellement interdite.



GRAPHS FOR INFORMATION ONLY

- ① OPEN BREATHER HOLE, DEFLECTION ANGLE ±30°.
- ② TORQUE: 45±5Nm; THREAD PLUG IS INSTALLED.
- ③ DEFLECTION: MAX 6° AT 0mm STROKE.
- ④ TORQUE: 80±10Nm.
- ⑤ TORQUE: MAX 25Nm.
- ⑥ CONDITION AS SUPPLIED: SPRING RELEASED.
- ⑦ SIZE WHEN SPRING COMPRESSED.
- ⑧ PARTIAL DEFLECTION ANGLE ALLOWED.
- ⑨ TORQUE: 220±20Nm.
- ⑩ TORQUE: ≥ 25Nm.

- TECHNICAL REQUIREMENT:**
- STROKE - PARKING CHAMBER: ≥ 63.5mm(2.5"); SERVICE CHAMBER: ≥ 63.5mm(2.5");
  - WORKING PRESSURE: APPLIED PRESSURE 8Bar(116PSI); MAX. WORKING PRESSURE: 10Bar(145PSI);
  - WORKING TEMPERATURE: -40°C ... +80°C(-40°F ... +176°F);
  - THE DRAWING IS AT CAGED CONDITION, THE PARKING CHAMBER WILL BE AT UNCAGED CONDITION DURING SHIPMENT;



General Specification: JED-334-1, Size ISO 14405 LP		Copyright WABCO®	
Further Technical Data:		Date: 2016-09-09	Signature: Kolkowski
Doc. Code:	Sheet: To	Checked: 2016-09-12	Przybysz
General Tolerances JED-261		Expert: Przybysz	
Range of Nominal Dimensions (± mm)		Przybysz	
Class	11	≤ 50	> 50 &lt; 180
Fine		± 0.1	± 0.15
Medium	X	± 0.2	± 0.3
Coarse		± 0.3	± 0.5
Tapped Holes acc.:		± 0.05	
1) Tolerance Class Applied Crossmarked		A 1 CREO	
Material No.:		PRO 393 200 0	
Date of first issue:		2016-09-12	
Doc. Code:		005 EN 1/1	
Language:		EN	
Techn. Resp.:		5420_AM	
Replacement for:			