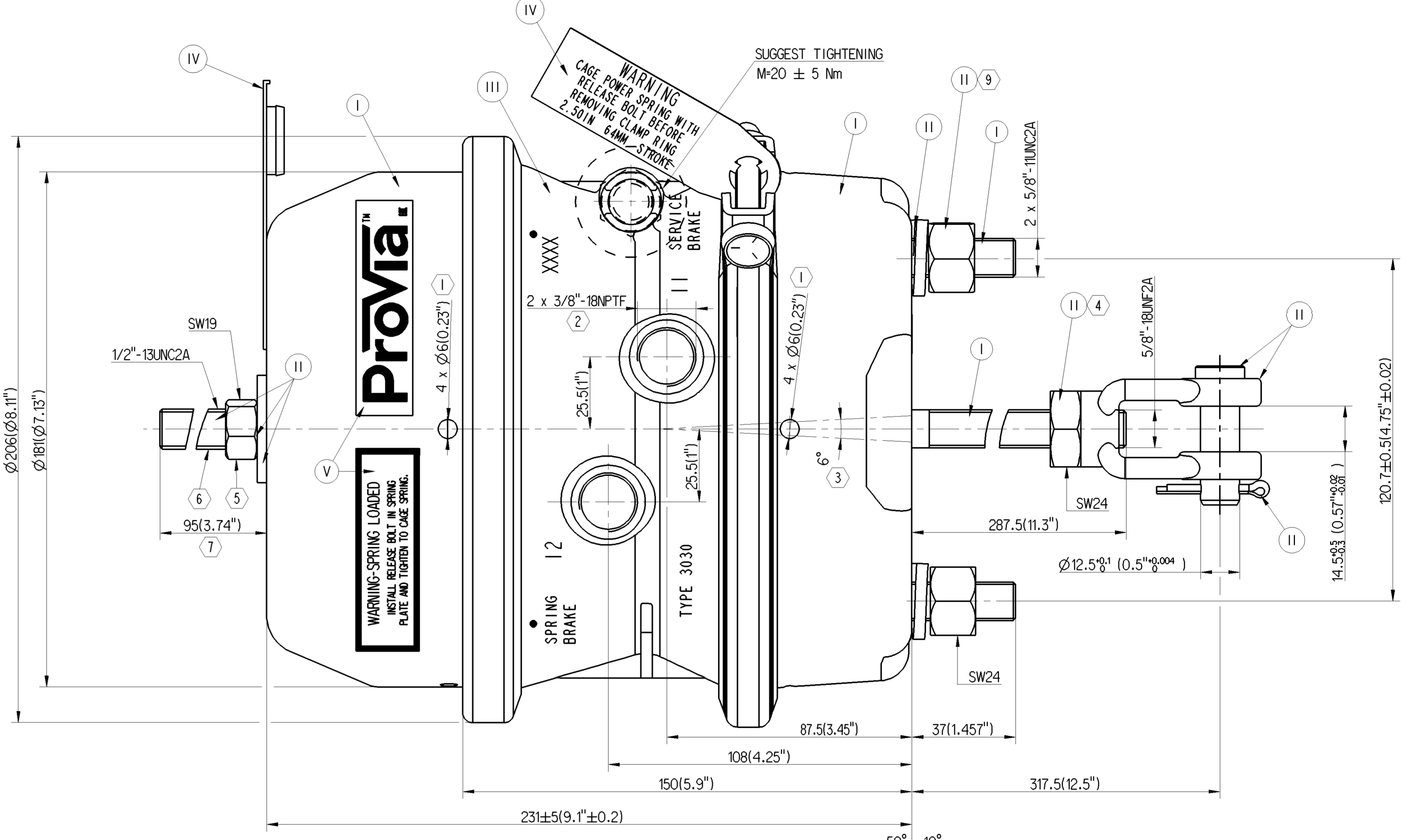
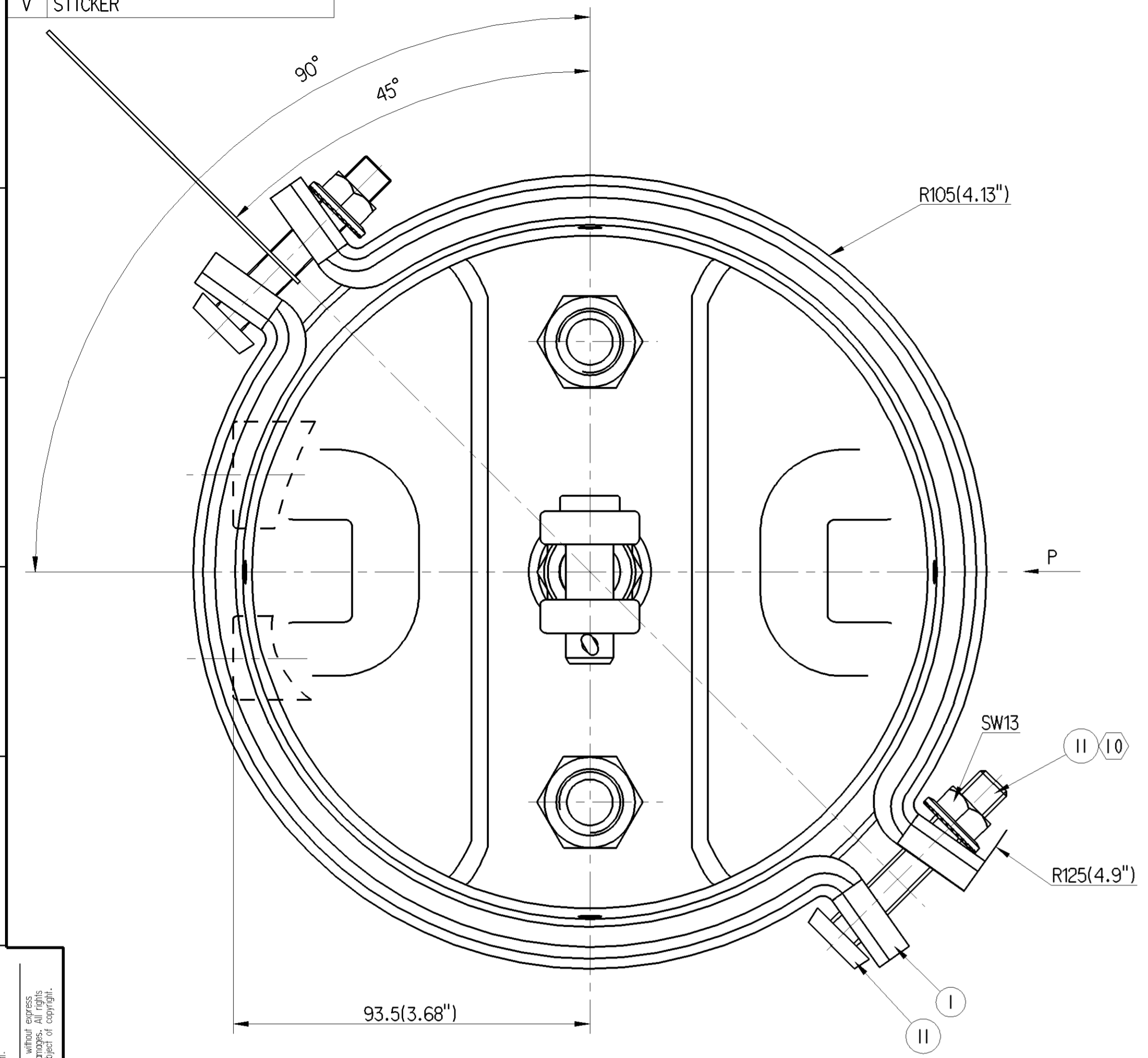
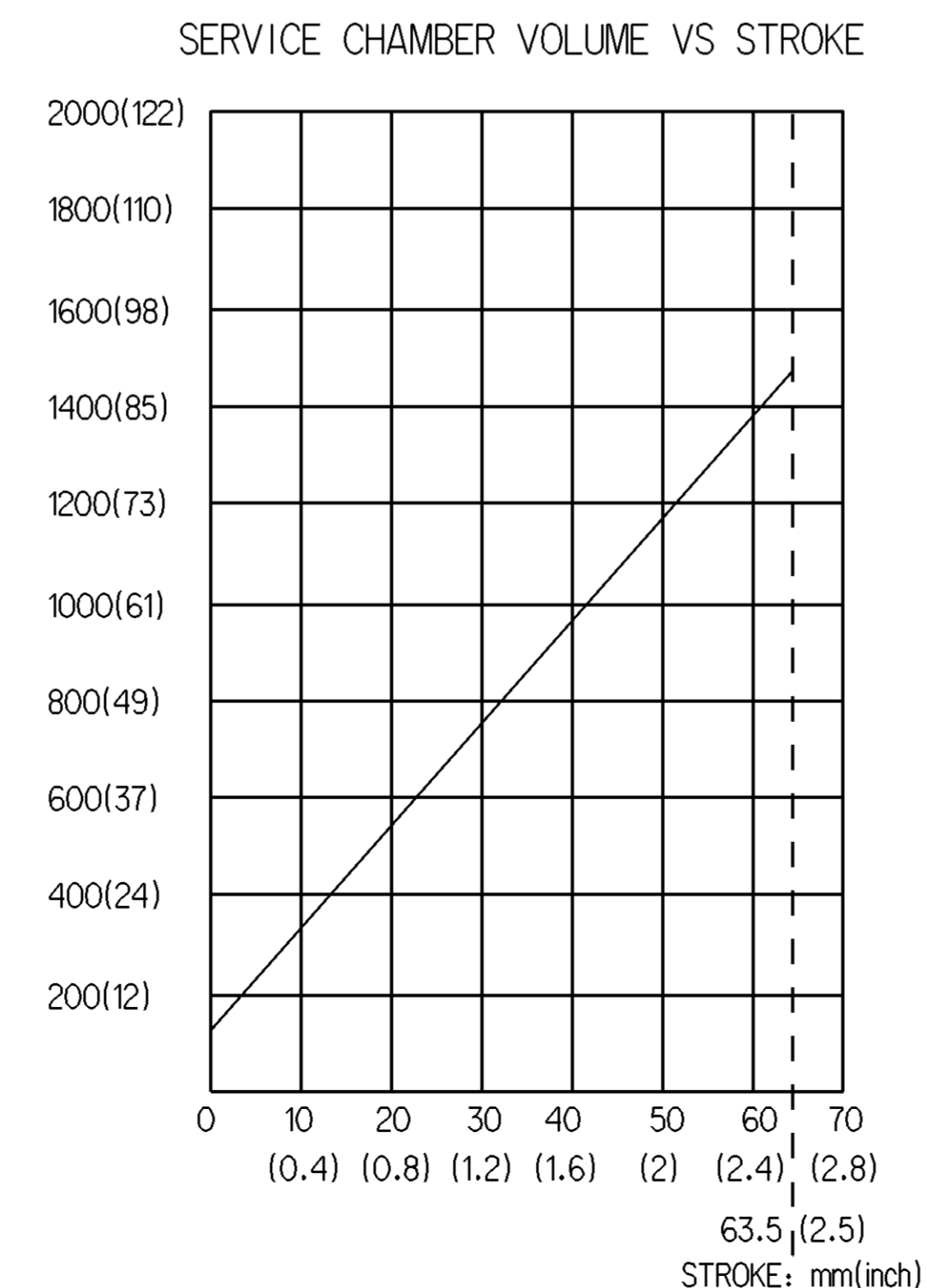
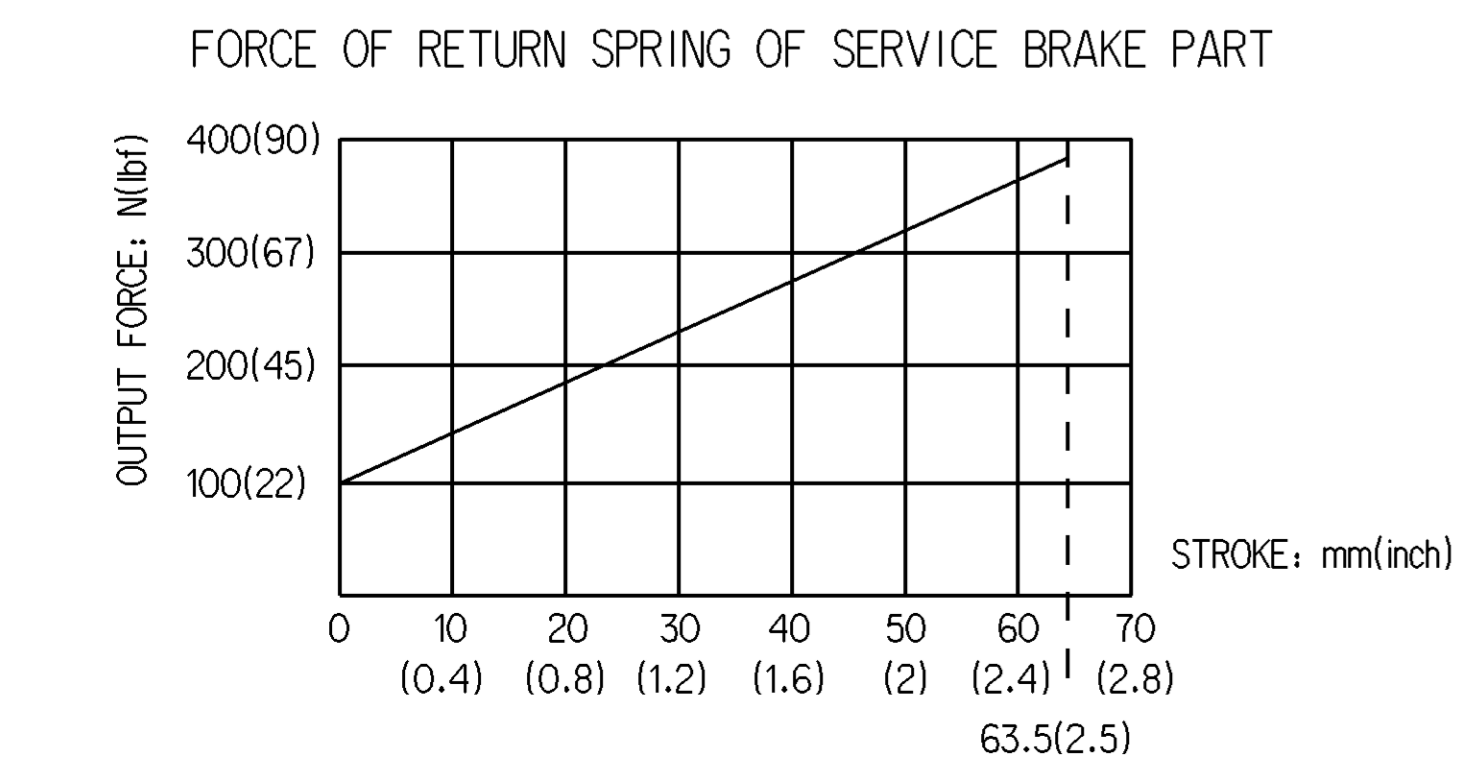
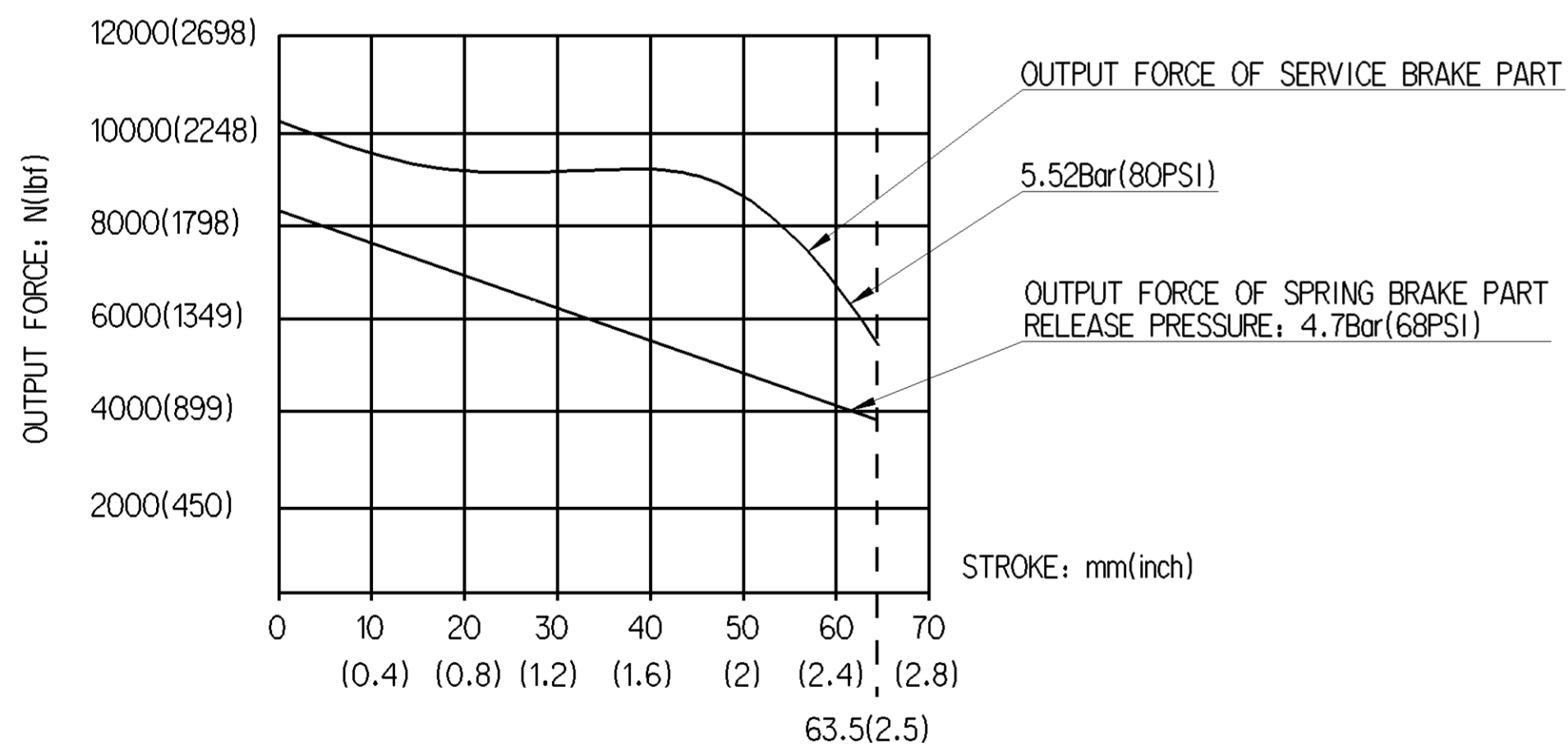


EXTERNAL SURFACE	
I	ELECTRO-PAINTING
II	ZINC PLATED WITH CR6+ FREE
III	SURFACE OXIDIZATION
IV	HARD POLYETHYLENE
V	STICKER



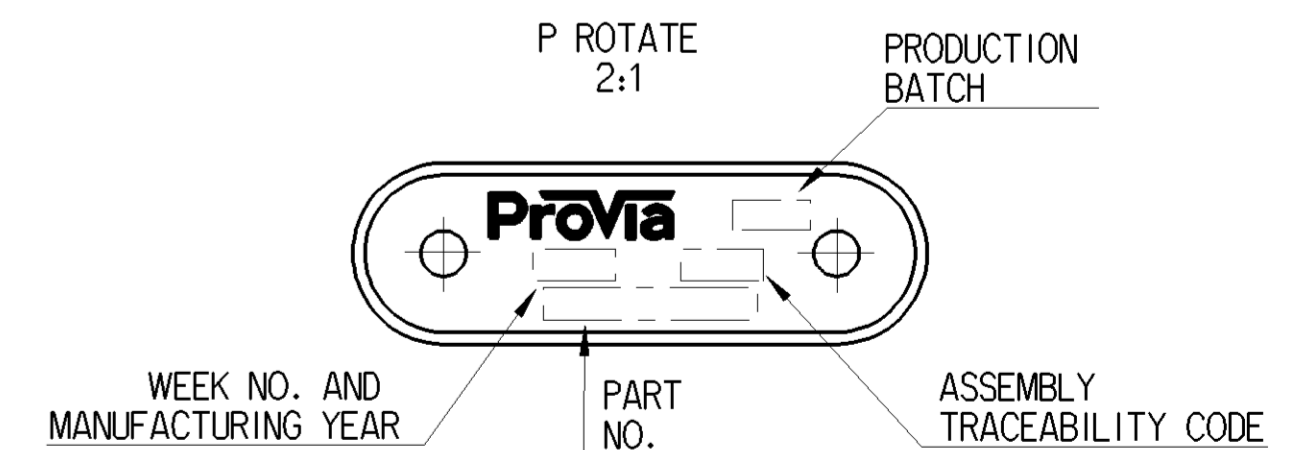
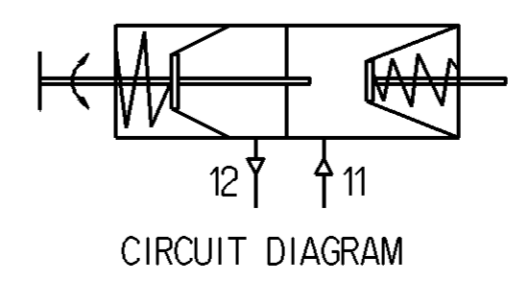
Non è permesso copiare o riprodurre questo documento, né utilizzare o riprodurre i contenuti stessi, senza permesso scritto dalla WABCO. È vietata espressamente la ristampa o l'uso non autorizzato di questo documento. Toute réimpression ou utilisation non autorisée sans la permission écrite de la WABCO est formellement interdite. Toute réimpression ou utilisation non autorisée sans la permission écrite de la WABCO est formellement interdite.



GRAPHS FOR INFORMATION ONLY

- ① OPEN BREATHER HOLE, DEFLECTION ANGLE $\pm 30^\circ$.
- ② TORQUE: $45 \pm 5 \text{ Nm}$; THREAD PLUG IS INSTALLED.
- ③ DEFLECTION: MAX 6° AT 0mm STROKE.
- ④ TORQUE: $80 \pm 10 \text{ Nm}$.
- ⑤ TORQUE: MAX 25 Nm .
- ⑥ CONDITION AS SUPPLIED; SPRING RELEASED.
- ⑦ SIZE WHEN SPRING COMPRESSED.
- ⑧ PARTIAL DEFLECTION ANGLE ALLOWED.
- ⑨ TORQUE: $220 \pm 20 \text{ Nm}$.
- ⑩ TORQUE: $\geq 25 \text{ Nm}$.

- TECHNICAL REQUIREMENT:**
- STROKE - PARKING CHAMBER: $\geq 63.5 \text{ mm}(2.5")$; SERVICE CHAMBER: $\geq 63.5 \text{ mm}(2.5")$;
 - WORKING PRESSURE: APPLIED PRESSURE $8 \text{ Bar}(116 \text{ PSI})$; MAX. WORKING PRESSURE: $10 \text{ Bar}(145 \text{ PSI})$;
 - WORKING TEMPERATURE: $-40^\circ \text{ C} \dots +80^\circ \text{ C}(-40^\circ \text{ F} \dots +176^\circ \text{ F})$;
 - THE DRAWING IS AT CAGED CONDITION, THE PARKING CHAMBER WILL BE AT UNCAGED CONDITION DURING SHIPMENT;



General Specification: JED-334-1 - Size ISO 14405 LP		Copyright WABCO®	
Further Technical Data:		Date: 2016-09-09	Signature: Kolkowski
Doc. Code:	Sheet: To	Checked: 2016-09-12	Przybysz
General Tolerances JED-261		Expert: Przybysz	
Range of Nominal Dimensions (± mm)		Przybysz	
Class	11	≤ 50	> 50 < 180
Fine	X	0.5	1.0
Medium	X	1.0	2.0
Course		2.0	3.5
Tapped Holes acc. -		A 1 CREO	
1) Tolerance Class Applied Crossmarked		Material No. PRO 393 201 0	
		Date of first issue: 2016-09-08	
		Doc. Code: 005	
		Language: EN	
		Sheet: 1/1	
		Ech. No. 5420_AM	
		Techn. Resp. A	
		Replacement for	