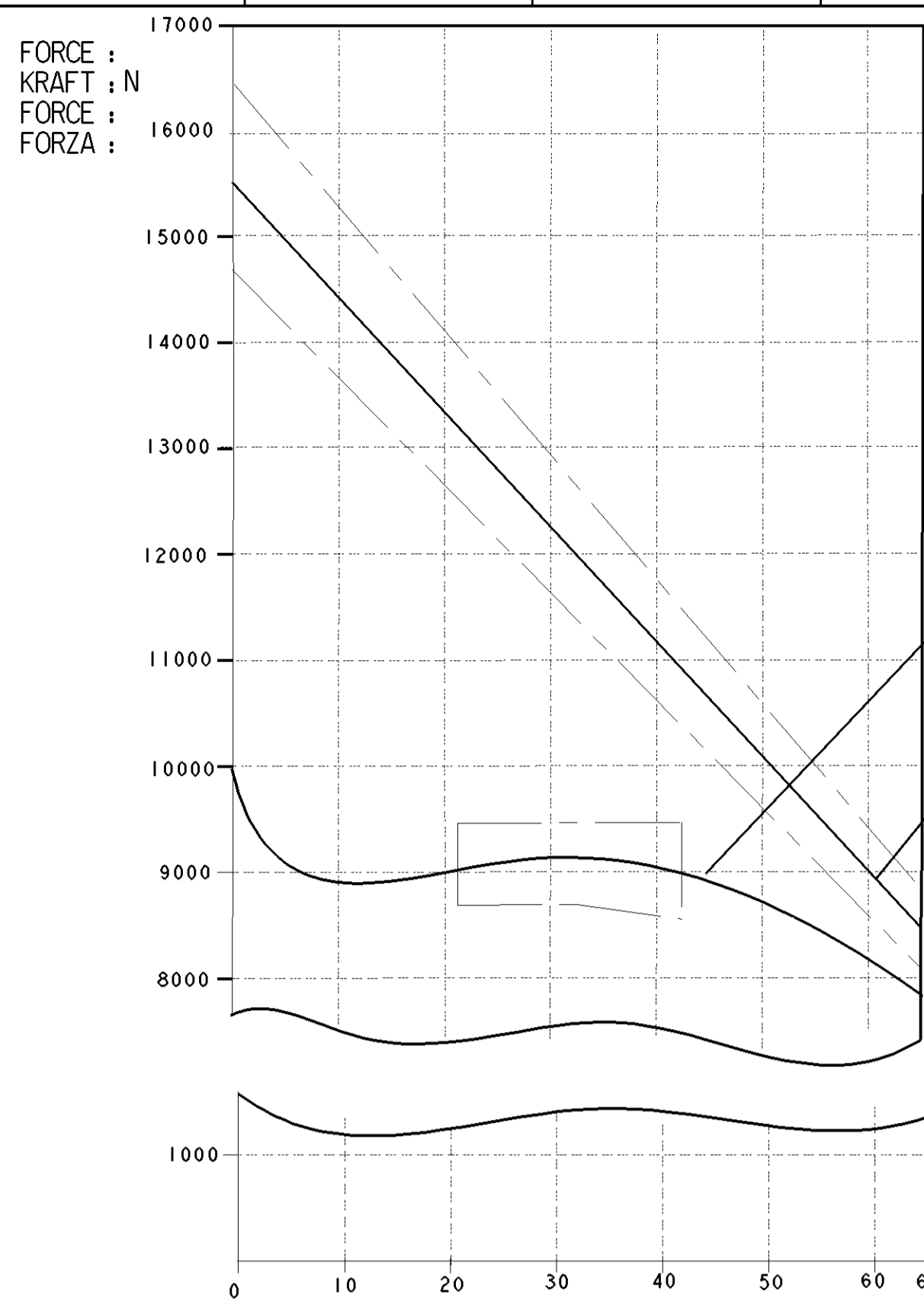


SURFACE PROTECT. OBERFL. SCHUTZ	
I	POWDER COATING JED-240-4
II	Zn JED-256-5
III	PHOSPHATING & OILING JED-371
IV	AL. JED-259
V	RUBBER / PLASTIC

TECHNICAL DATA  
TECHNISCHE DATEN



AIR VOLUME OF SERVICE BRAKE PART AT 2/3 OF ITS STROKE  
HUBVOLUMEN DES BETRIEBSBREMSTEILES BEI 2/3 HUB  
VOLUME D'AIR DU DISPOSITIF DU FREIN DE SERVICE A 2/3 DE LA COURSE  
VOLUME D'ARIA DELLA SEZIONE DI FRENO DI SERVIZIO A 2/3 DELLA CORSA : ca.  $0.90 \times 10^3 \text{ cm}^3$

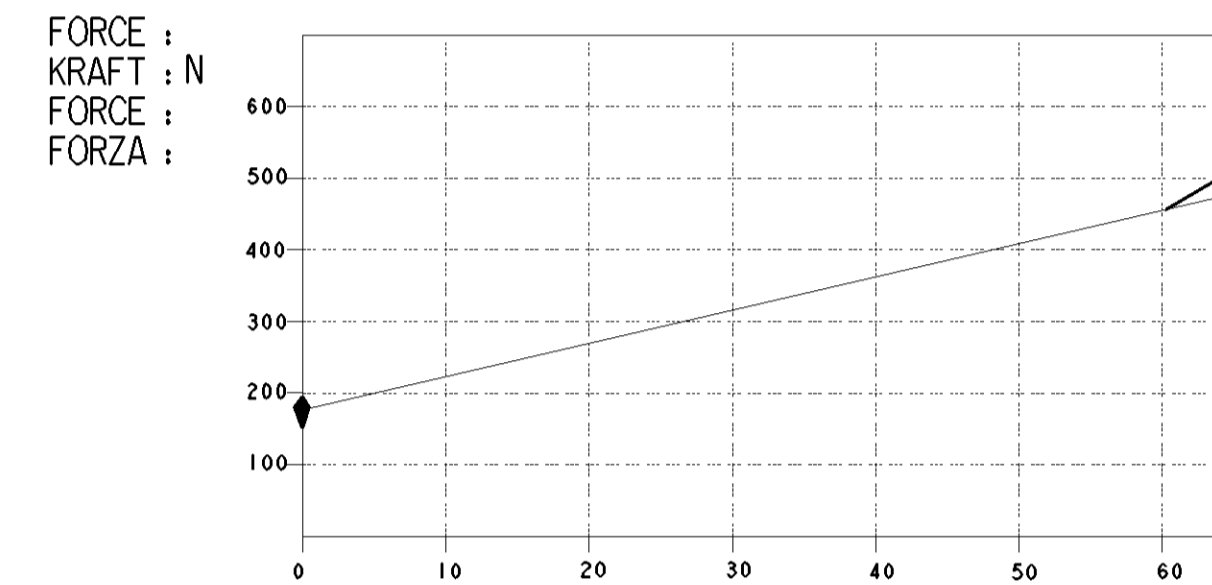
AIR VOLUME OF SPRING BRAKE PART  
HUBVOLUMEN DES FEDERSPEICHERS  
VOLUME D'AIR DU DISPOSITIF RESSORT  
VOLUME D'ARIA DELLA SEZIONE A MOLLA : ca.  $1.95 \times 10^3 \text{ cm}^3$

OUTPUT FORCE OF SERVICE BRAKE PART AT 2/3 OF ITS STROKE  
KRAFTABGABE DES BETRIEBSBREMSTEILES BEI 2/3 HUB  
EFFORT DE POUSSEE DU DISPOSITIF DU FREIN DE SERVICE SOUS 2/3 DE LA COURSE  
FORZA DI SPINTA DELLA SEZIONE DI FRENO DI SERVIZIO PER : 6.5 bar

OUTPUT FORCE OF SPRING BRAKE PART, RELEASE PRESSURE  
KRAFTABGABE DES FEDERSPEICHERS, LOESEDRUCK  
EFFORT DE POUSSEE DU DISPOSITIF RESSORT, PRESSION DE DESSERRAGE  
FORZA DI SPINTA DELLA SEZIONE A MOLLA, PRESSIONE DI RILASCIO :  $5.8 \pm 0.4 \text{ bar}$

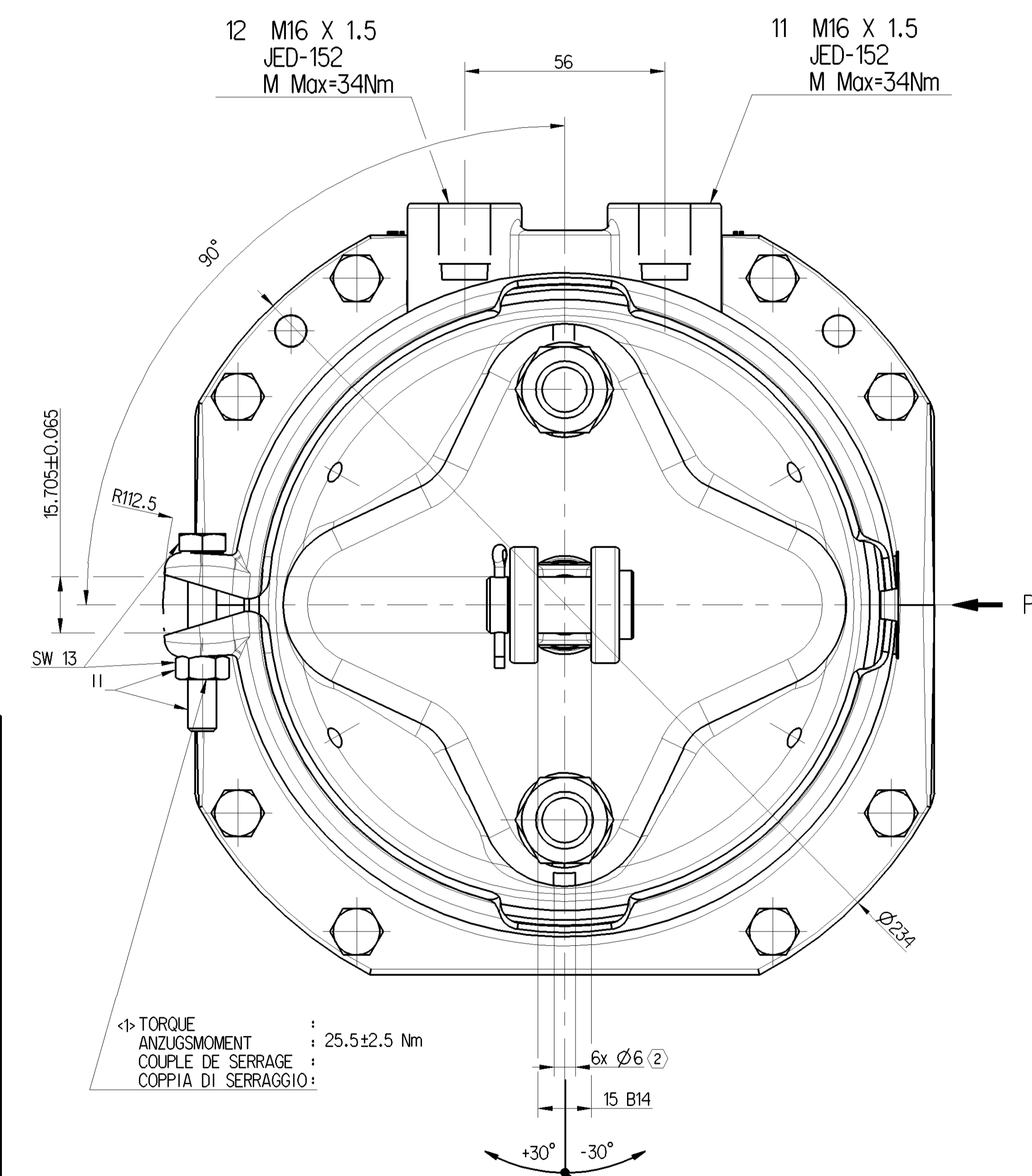
STROKE : mm  
HUB : mm  
COURSE : mm  
CORSA : mm

NOMINAL VALUES GIVEN FOR SERVICE SIDE, TOLERANCE BAND AS PER DIN 74060-1  
NOMINAL VALUES GIVEN FOR SPRING SIDE, TOLERANCE BAND  $\pm 5\%$



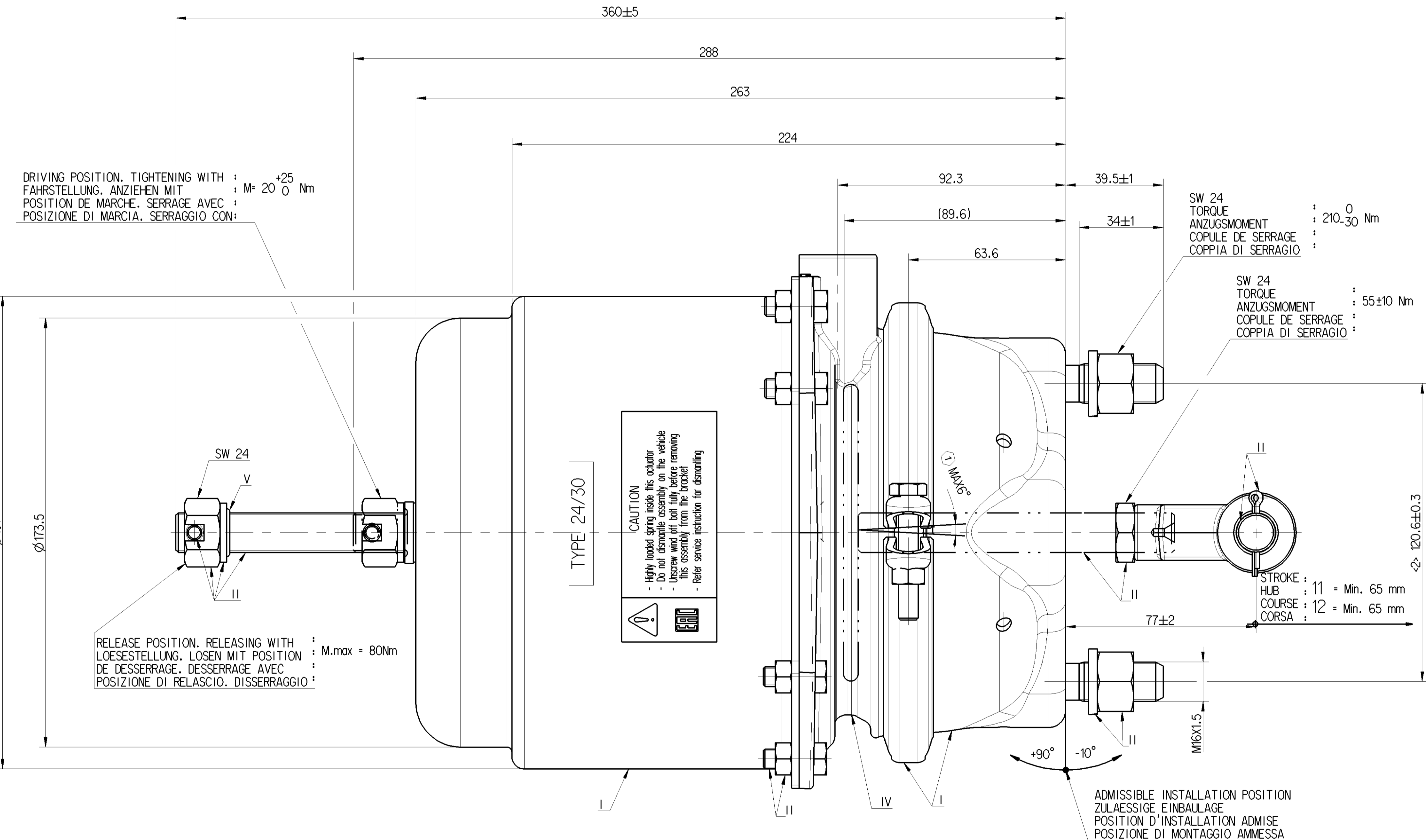
FORCE OF RETURN SPRING OF SERVICE BRAKE PART  
RUECKSTELLFEDERKRAFT DES BETRIEBSBREMSTEILES  
EFFORT DU RESSORT DE RAPPEL DU DISPOSITIF DU FREIN DE SERVICE  
FORZA DELLA MOLLA DI RITORNO DELLA SEZIONE DI FRENO DI SERVIZIO

STROKE : mm  
HUB : mm  
COURSE : mm  
CORSA : mm



TORQUE : 25.5±2.5 Nm  
ANZUGSMOMENT : 25.5±2.5 Nm  
COUPLE DE SERRAGE : 25.5±2.5 Nm  
COPPIA DI SERRAGGIO : 25.5±2.5 Nm

TO BE INSTALLED WITH LOWER BREATHER HOLE OPEN  
IM EINBAUZUSTAND UNTERE ATMUNGSBOHRUNG GEÖFFNET  
A MONTER AVEC LE RENIFLARD INFÉRIEUR OUVERT  
INSTALLAZIONE: CON IL FORO DI SFIATO INFERIORE APERTO



DRIVING POSITION, TIGHTENING WITH :  
FAHRSTELLUNG, ANZIEHEN MIT :  $M = 20 \pm 2.5 \text{ Nm}$   
POSITION DE MARCHÉ, SERRAGE AVEC :  
POSIZIONE DI MARCIA, SERRAGGIO CON :

RELEASE POSITION, RELEASING WITH :  
LOESESTELLUNG, LOSEN MIT :  $M_{max} = 80 \text{ Nm}$   
DE DESSERRAGE, DESSERRAGE AVEC :  
POSIZIONE DI RILASCIO, DISSERRAGGIO :

CAUTION  
- High torque is applied to the assembly.  
- Do not disassemble assembly on the vehicle.  
- Use correct tools and follow the instructions.  
- Refer service instruction for assembly.

ADMISSIBLE INSTALLATION POSITION  
ZULÄSSIGE EINBAUWEISE  
POSITION D'INSTALLATION ADMISE  
POSIZIONE DI MONTAGGIO AMMESSA

ProVia IDENTIFICATION NUMBER  
ProVia TEILE NUMBER  
NUMERO D' IDENTIFICATION ProVia  
NUMERO D' IDENTIFICAZIONE

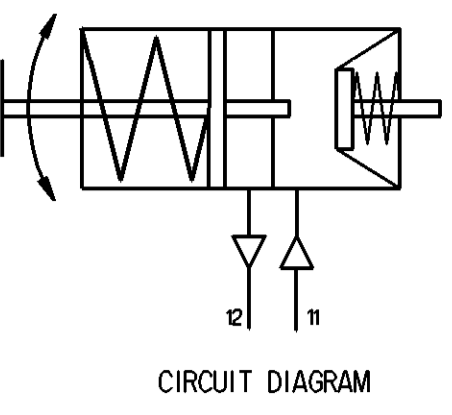
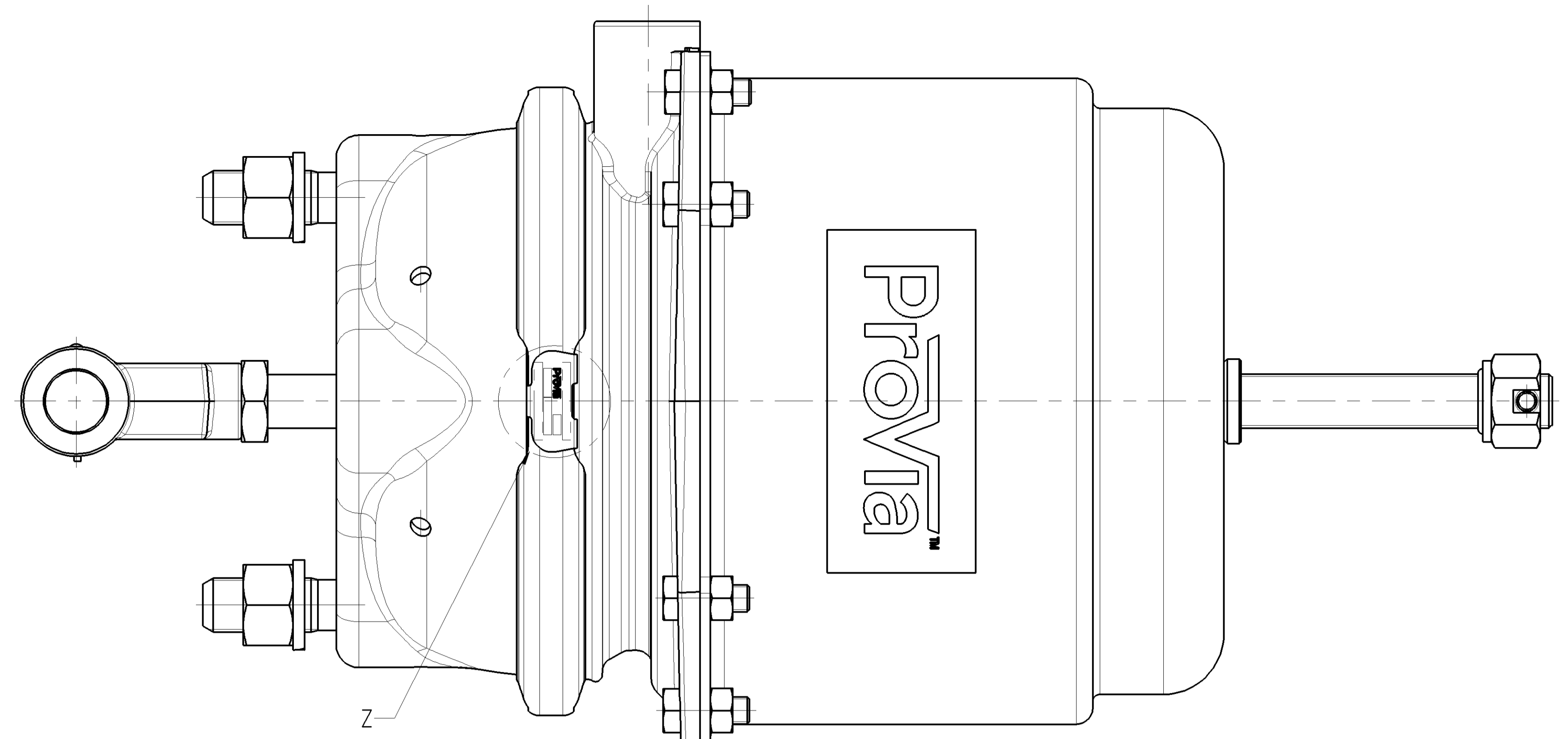
WEEK / YEAR MANUFACTURE  
FERTIGUNGSWOCHE/JAHR  
SEMAINE/ANNEE DE FABRICATION  
SETTIMANA/ANNO DELLA FABBRICAZIONE

SERIAL NUMBER  
ORDNUNGSNUMMER  
NUMERO DE SÉRIE  
NUMERO DI SERIE

MANUFACTURING PLANT  
PRODUKT IONSTAETTE: JED-225  
LIEU DE FABRICATION  
LUOGO DI FABBRICAZIONE

SAFETY CHARACTERISTICS  
SICHERHEITSMERKMALE  
CARACTÉRISTIQUES DE SÉCURITÉ  
CARATTERISTICHE DI SICUREZZA

SIGNIFICANT CHARACTERISTICS  
WESENTLICHE MERKMALE  
CARACTÉRISTIQUES SIGNIFIANTES  
CARATTERISTICHE SIGNIFICATIVE



CIRCUIT DIAGRAM

MEDIUM : AIR MEDIUM : LUFT FLUIDE : AIR FLUIDO : ARIA
NOMINAL DIAMETER : NENNWEITE : $\text{Min } \varnothing 8$ DIAMETRE NOMINAL : DIAMETRO NOMINALE :
WIDTH ACROSS FLATS SW SCHLÜSSELWEITE SURPLATS LARGHEZZA IN CHIAVE
THERMAL RANGE OF APPLICATION : THERMISCHER ANWENDUNGSBEREICH : $-40^{\circ}\text{C} \dots +80^{\circ}\text{C}$ GAMME D'APPLICATION THERMIQUE : CAMPO TERMICO D'APPLICAZIONE :
PORT : SERVICE BRAKING SYSTEM, WORKING PRESSURE : ANSCHLUSS : 11 BETRIEBSBREMSEANLAGE, BETRIEBSDRUCK : $\text{Pe max.} = 10 \text{ bar}$ ORIFICE : DISPOSITIF DE FREINAGE DE SERVICE, PRESSION D'UTILISATION : ORIFIZIO : DISPOSITIVO DI FRENATURA DI SERVIZIO, PRESSIONE DI ESERCIZIO : (TEMPORARILY / KURZZEITIG / (DE COURTE DUREE / (BREVE TEMPO SOLO) : $\text{Pe max.} = 13 \text{ bar}$
PORT : SPRING BRAKE CYLINDER, WORKING PRESSURE : ANSCHLUSS : 12 FEDERSPEICHERZYLINDER, BETRIEBSDRUCK : $\text{Pe max.} = 8.5 \text{ bar}$ ORIFICE : CYLINDRE A RESSORT, PRESSION D'UTILISATION : ORIFIZIO : CILINDRO A MOLLA, PRESSIONE DI ESERCIZIO : (TEMPORARILY / KURZZEITIG / (DE COURTE DUREE / (BREVE TEMPO SOLO) : $\text{Pe max.} = 11 \text{ bar}$
DEFLECTION : AUSLENKUNG : max. 6° AT STROKE DEVIATION : BEI HUB : 0 mm A COURSE A CORSA
OPEN BREATHER HOLE OFFEN ATMUNGSBOHRUNG OUVERT TROU RENIFLEUR APERTO FORO RESPIRATORE
DELIVERY : ANLIEFERUNG : <input checked="" type="checkbox"/> RELEASE POSITION LIVRAISON : <input checked="" type="checkbox"/> LOESESTELLUNG FORNITURA : <input checked="" type="checkbox"/> POSITION DE RILASCIO <input type="checkbox"/> DRIVING POSITION <input type="checkbox"/> FAHRSTELLUNG <input type="checkbox"/> POSITION DE MARCHÉ <input type="checkbox"/> POSIZIONE DI MARCIA
UNIT DRAWN WITH AIR APPLIED AT PORT 12 EINHEIT MIT LUFT APPLICATA AN PORTA 12 UNIDADE DESENHADA COM ARIA APLICADA NA PORTA 12 UNITÀ DISEGNATA CON ARIA APPLICATO A PORTA 12

General Specifications: JED-334-1, Size ISO 14402 LP		Copyright: ProVia®		ProVia	
Further Technical Data: PRO 421 004 0	Doc. Code: 030	Sheet: 1	To: 4	2017-05-05	2017-05-05
General Tolerances: ISO 2768		Surface Finish: Ra 0.4		Revision: 00	
Range of Nominal Dimensions (± mm)		Material: SURESH		Date of 1st issue: 2017-05-05	
Class 1	0.5 - 1.0	1.5 - 2.0	2.0 - 4.0	4.0 - 6.3	6.3 - 12.5
Class 2	0.5 - 1.0	1.5 - 2.0	2.0 - 4.0	4.0 - 6.3	6.3 - 12.5
Class 3	0.5 - 1.0	1.5 - 2.0	2.0 - 4.0	4.0 - 6.3	6.3 - 12.5
Class 4	0.5 - 1.0	1.5 - 2.0	2.0 - 4.0	4.0 - 6.3	6.3 - 12.5
Class 5	0.5 - 1.0	1.5 - 2.0	2.0 - 4.0	4.0 - 6.3	6.3 - 12.5
Class 6	0.5 - 1.0	1.5 - 2.0	2.0 - 4.0	4.0 - 6.3	6.3 - 12.5
Class 7	0.5 - 1.0	1.5 - 2.0	2.0 - 4.0	4.0 - 6.3	6.3 - 12.5
Class 8	0.5 - 1.0	1.5 - 2.0	2.0 - 4.0	4.0 - 6.3	6.3 - 12.5
Class 9	0.5 - 1.0	1.5 - 2.0	2.0 - 4.0	4.0 - 6.3	6.3 - 12.5
Class 10	0.5 - 1.0	1.5 - 2.0	2.0 - 4.0	4.0 - 6.3	6.3 - 12.5
Class 11	0.5 - 1.0	1.5 - 2.0	2.0 - 4.0	4.0 - 6.3	6.3 - 12.5
Class 12	0.5 - 1.0	1.5 - 2.0	2.0 - 4.0	4.0 - 6.3	6.3 - 12.5
Class 13	0.5 - 1.0	1.5 - 2.0	2.0 - 4.0	4.0 - 6.3	6.3 - 12.5
Class 14	0.5 - 1.0	1.5 - 2.0	2.0 - 4.0	4.0 - 6.3	6.3 - 12.5
Class 15	0.5 - 1.0	1.5 - 2.0	2.0 - 4.0	4.0 - 6.3	6.3 - 12.5
Class 16	0.5 - 1.0	1.5 - 2.0	2.0 - 4.0	4.0 - 6.3	6.3 - 12.5
Class 17	0.5 - 1.0	1.5 - 2.0	2.0 - 4.0	4.0 - 6.3	6.3 - 12.5
Class 18	0.5 - 1.0	1.5 - 2.0	2.0 - 4.0	4.0 - 6.3	6.3 - 12.5
Class 19	0.5 - 1.0	1.5 - 2.0	2.0 - 4.0	4.0 - 6.3	6.3 - 12.5
Class 20	0.5 - 1.0	1.5 - 2.0	2.0 - 4.0	4.0 - 6.3	6.3 - 12.5
Class 21	0.5 - 1.0	1.5 - 2.0	2.0 - 4.0	4.0 - 6.3	6.3 - 12.5
Class 22	0.5 - 1.0	1.5 - 2.0	2.0 - 4.0	4.0 - 6.3	6.3 - 12.5
Class 23	0.5 - 1.0	1.5 - 2.0	2.0 - 4.0	4.0 - 6.3	6.3 - 12.5
Class 24	0.5 - 1.0	1.5 - 2.0	2.0 - 4.0	4.0 - 6.3	6.3 - 12.5