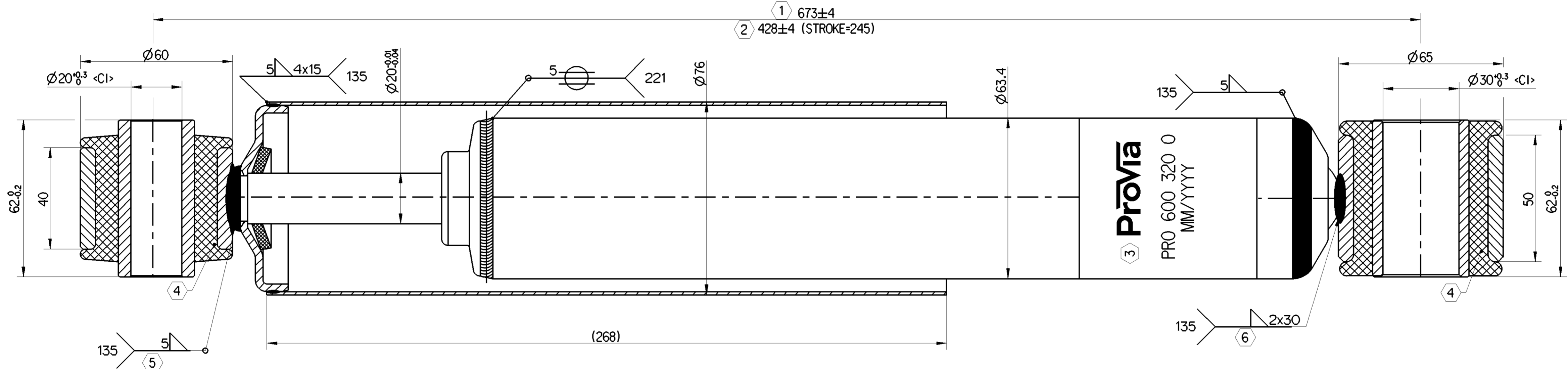


<P> SAFETY CHARACTERISTICS	0
<S> SIGNIFICANT CHARACTERISTICS	0
<CI> CUSTOMER INTERFACE	2



1	MAX.REBOUND LENGTH
2	MIN.COMPRESSION LENGTH
3	MARKING DETAILS PROVIA LOGO PROVIA PART NUMBER DATE OF MANUFACTURING
4	HARDNESS OF RUBBER PARTS 60-70 HS
5	WELD STRENGTH 60KN
6	WELD STRENGTH 55KN
	COLOUR: RAL 9005B SEMI-BLACK

**Δ Damping force specification-HYDRAULIC**

V (m/s)	0.079	0.157	0.314	0.520	0.750
Rebound (N)	5095	7310	8070	8950	10000
Compression (N)	1255	2605	3310	4050	4955
S(mm)	60		Reb (N)		

General Specifications: ISO 8015, JED-334-1, Size ISO H405 LP		Copyright WABCO®	
Further Technical Data: PRO 601 066 0		Date	Signature
Doc. Code: O35	Sheet: 1 To 6	2023-04-21	Saravanan
General Tolerances JED-261		2023-04-26	
Range of Nominal Dimensions ( ± mm)		Tapped Holes acc. -	
Class	1) ≤ 50 > 50 > 180 > 400	Mass	Scale
Fine	±0.5 ±1 ±1.5 ±2	4.9 kg	1:1
Medium	±1 ±2 ±3 ±4	Size	CAD System
Coarse	±2 ±3.5 ±5 ±6.5	A 1	CREO
Material No.		Date of first issue:	2022-11-04
PRO 600 320 0		Doc.Code	Language
005		EN	1/1
EDM-No.	Revision	Techn. Resp.	Replacement for
513729	2x A	6961AM	-

Non è permesso copiare o riprodurre questo documento, né utilizzare il contenuto o riprodurre, comunque in forma o in altro modo, senza permesso scritto dalla WABCO. È vietata espressamente la ristampa o l'uso non autorizzato. Toute réimpression ou reproduction de son contenu sans autorisation écrite de la WABCO est formellement interdite. Toute utilisation non autorisée de ce document est formellement interdite. All rights reserved. No part of this document may be reproduced, stored in a retrieval system, or transmitted in any form or by any means, electronic, mechanical, photocopying, recording, or by any information storage and retrieval system, without the prior written permission of WABCO. All rights reserved.