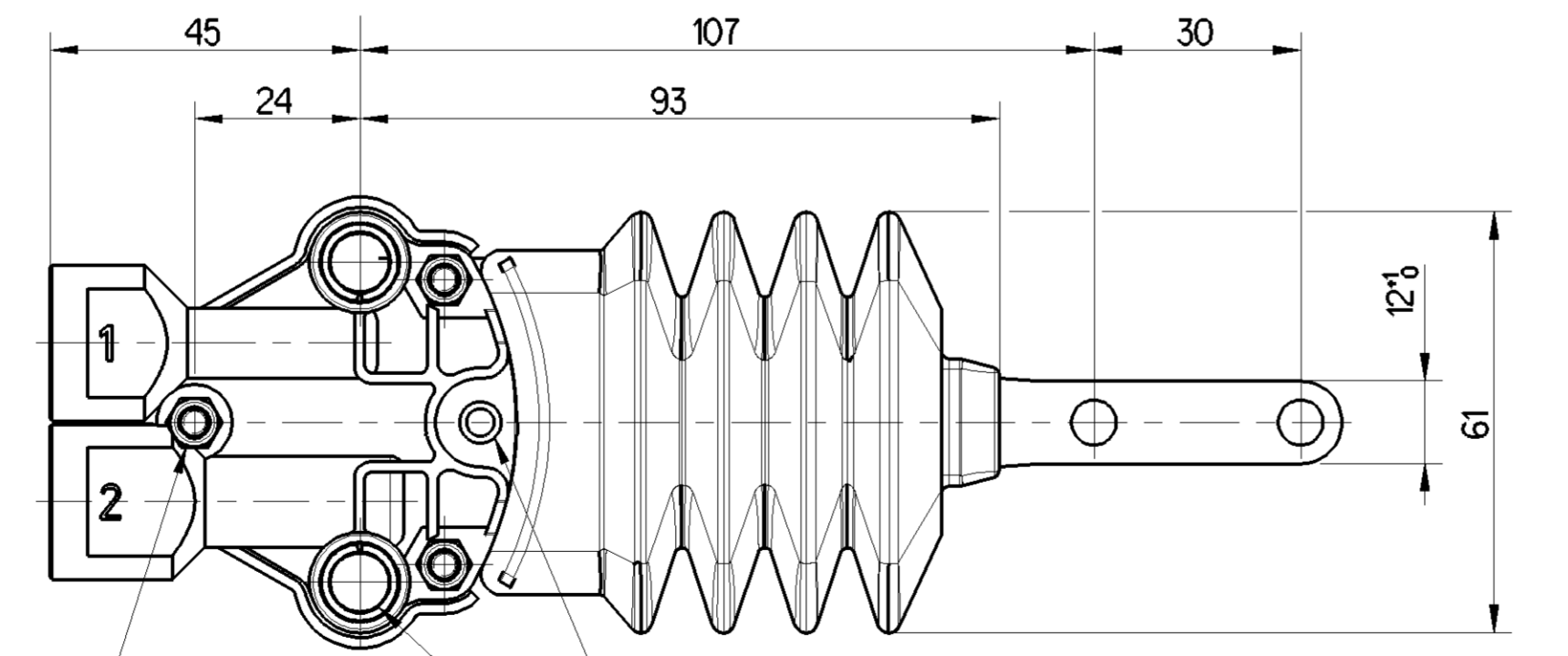
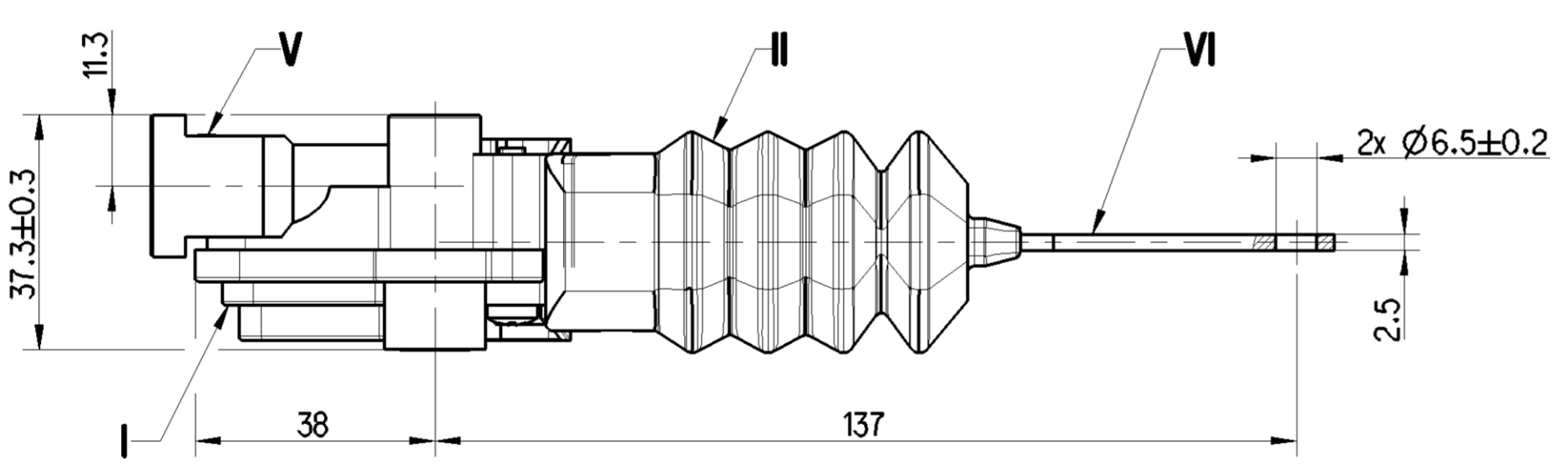
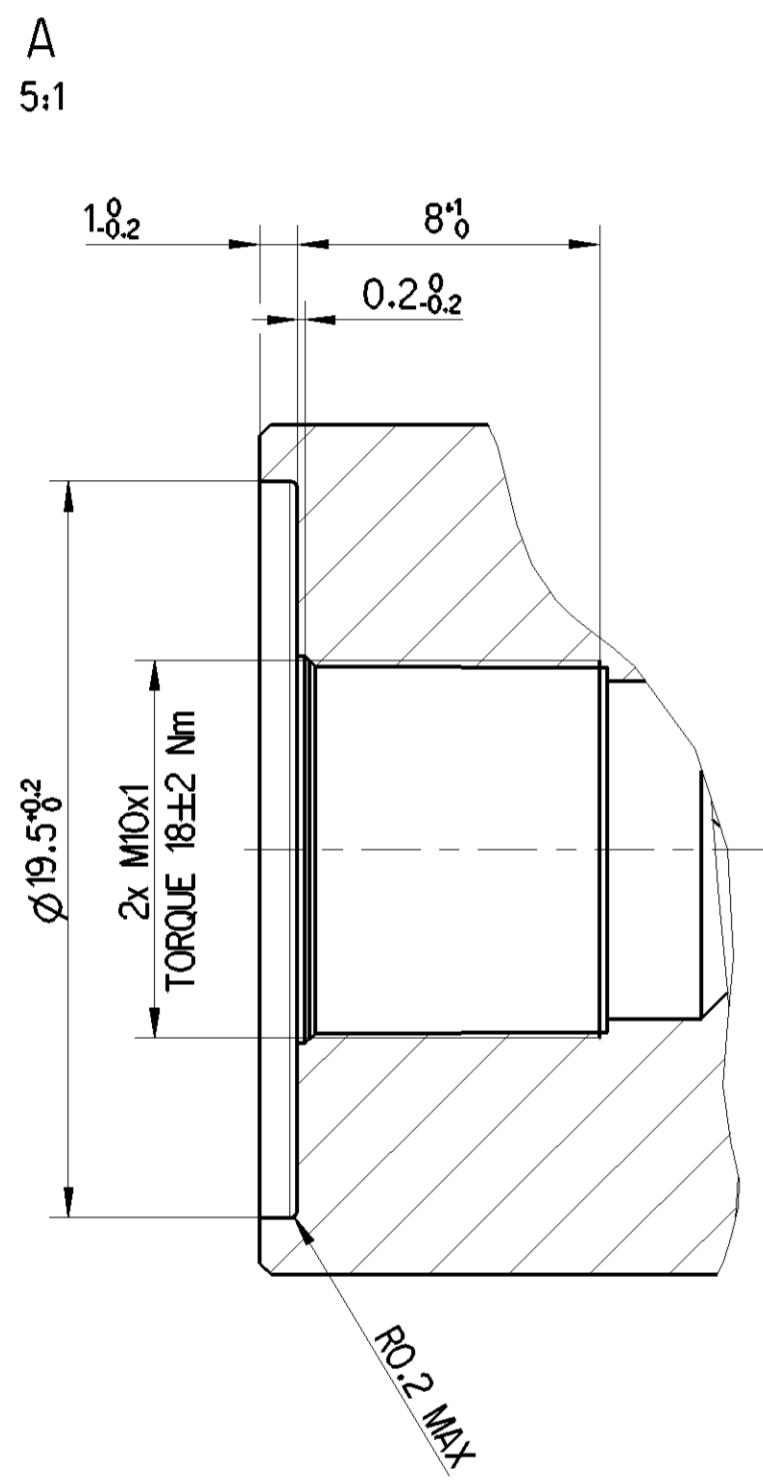
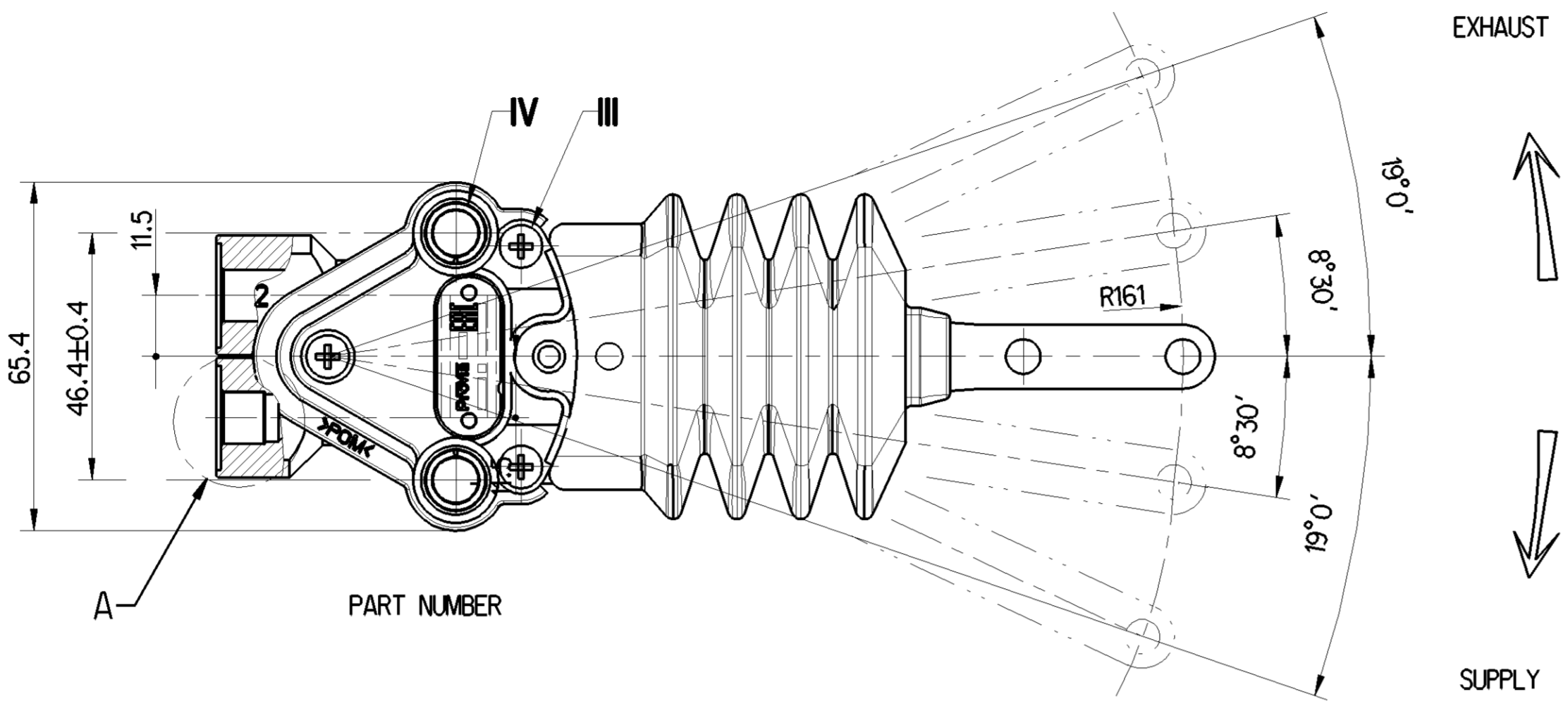
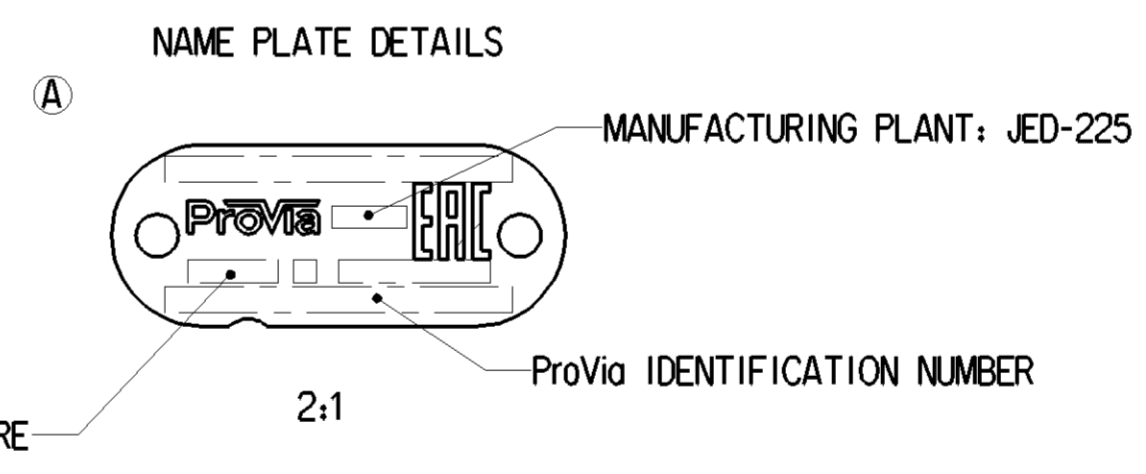
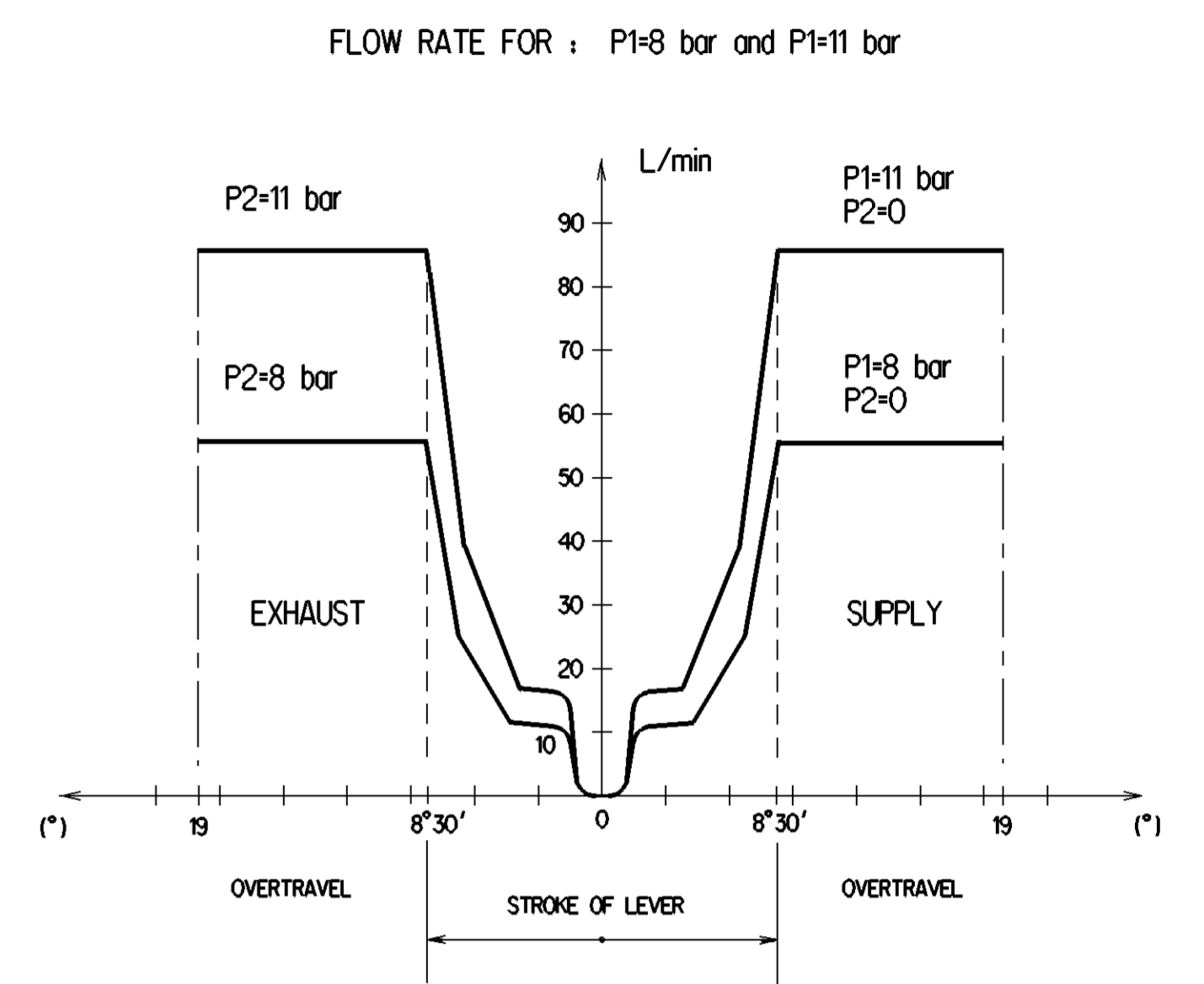


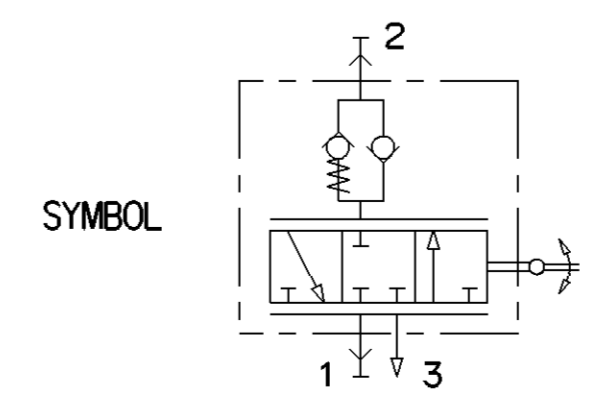
	MATERIAL	SURFACE PROTECTION
I	POM	
II	EPDM	
III	STEEL	Zn
IV	STEEL	Zn
V	Zn Alloy	Cr III
VI	STEEL	Zn
VII	STEEL	Zn



HOLE Ø4 TO PRE-INDEX IN MECHANICAL NEUTRAL POSITION
 Ø8.5±0.2 (2x), FIXING OF THE VALVE BY SCREW: M8
 TORQUE: 28 Nm MAX.



1	SUPPLY	
2	DELIVERY	
THERMAL RANGE		-40°C ... +80°C
WORKING PRESSURE		P1= 11 bar MAX.
EXCEPTIONAL INLET PRESSURE		P1= 14 bar MAX.
RESIDUAL PRESSURE		P2= 0.6±0.3 bar



General Specification: JED-334-1 - Size ISO 14405 LP
 Further Technical Data: PRO0070010
 Doc. Code: 035 Sheet: 1 To 5
 Date: 2018-09-24
 Brand: Sorovon
 Checked: 2018-09-24
 Expert: BILSING THOMAS
 Mass: 0.359 kg
 Scale: 1:1
 Size: A1
 CAD System: CREO
 Material No.: PRO 007 010 0
 Date of first issue: 2016-12-05
 Doc. Code: 005 EN 1/1
 ECH-NO.: 177205
 Revision: 1
 Techn. Resp.: 5642_AM
 Replacement for: -

Non è permesso copiare o riprodurre questo documento, né utilizzare il contenuto a fini commerciali, senza permesso scritto dalla ProVia. È vietata espressamente la ristampa o l'uso non autorizzato di questo documento. Toute réimpression ou reproduction de ce document, sans autorisation écrite de la ProVia, est formellement interdite. Toute utilisation commerciale du contenu de ce document est formellement interdite. All rights reserved. No part of this document may be reproduced or transmitted in any form or by any means, electronic or mechanical, including photocopying, recording, or by any information storage and retrieval system, without the prior written permission of ProVia.