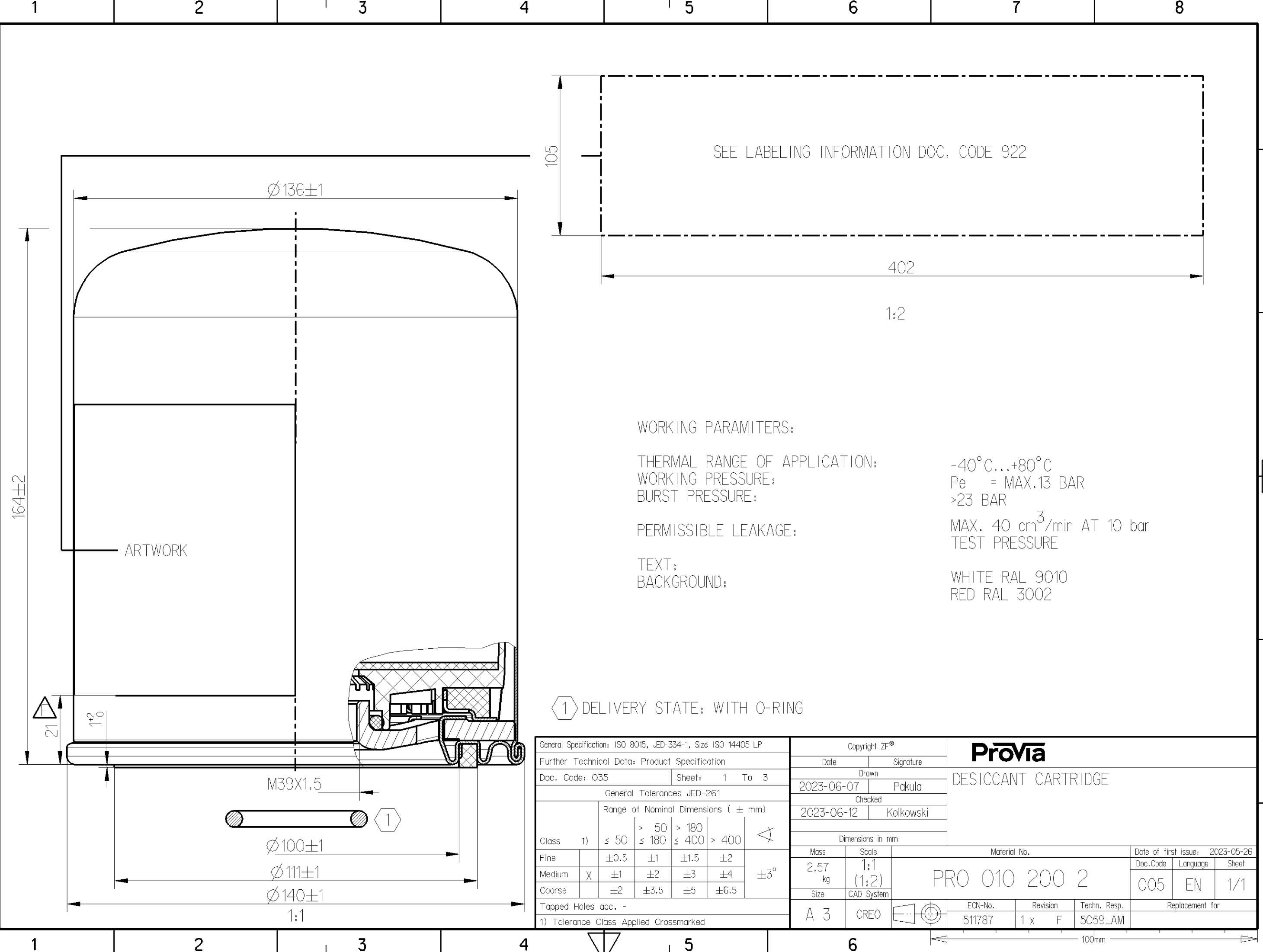


Non e permesso consegnare a terzi o riprodurre questo documento, ne utilizzare il contenuto o renderlo comunque noto a terzi senza autorizzazione esplicita. Ogni infrazione costituirà un evidente abuso e comporterà il risarcimento dei danni subiti. E' fatta riserva di tutti i diritti derivanti da brevetti o modelli.

Toute communication ou reproduction de ce document, toute exploitation ou communication de son contenu sont interdites, sauf autorisation expresse. Tout manquement a cette regle constitue un abus evident et expose son auteur au versement de dommages et interets. Tous droits de propriete industrielle reserves, notamment en matiere de brevets et de modeles.

Copying of this document and giving it to others and the use or communication of the contents thereof, are forbidden without express authority. Controvention of this restriction will constitute an evident abuse and result in a liability to the payment of damages. All rights are reserved in the event of the grant of patent or registration of a utility model or design. This document is the subject of copyright.

Weitergabe sowie Vervielfältigung dieser Unterlage, Verwertung und Mitteilung ihres Inhalts nicht gestattet, soweit nicht ausdrücklich zugestanden. Zuwiderhandlungen stellen einen offensichtlichen Missbrauch dar und verpflichten zu Schadensersatz. Alle Rechte fuer den Fall der Patenterteilung oder Gebrauchsmuster-Eintragung vorbehalten.



164±2

ARTWORK

Ø136±1

105

SEE LABELING INFORMATION DOC. CODE 922

402

1:2

WORKING PARAMETERS:

THERMAL RANGE OF APPLICATION:

-40°C...+80°C

WORKING PRESSURE:

Pe = MAX.13 BAR

BURST PRESSURE:

>23 BAR

PERMISSIBLE LEAKAGE:

MAX. 40 cm³/min AT 10 bar

TEST PRESSURE

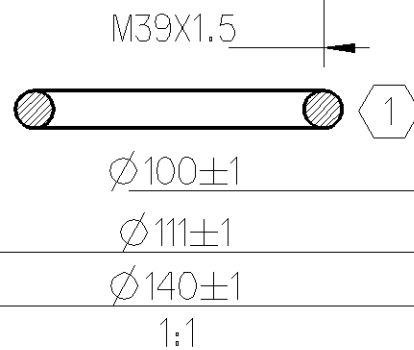
TEXT:

WHITE RAL 9010

BACKGROUND:

RED RAL 3002

1 DELIVERY STATE: WITH O-RING



General Specification: ISO 8015, JED-334-1, Size ISO 14405 LP		Copyright ZF®		 DESICCANT CARTRIDGE		
Further Technical Data: Product Specification		Date	Signature			
Doc. Code: O35	Sheet: 1 To 3	2023-06-07	Pakula			
General Tolerances JED-261		Checked				
Range of Nominal Dimensions (± mm)		2023-06-12		Kolkowski		
Class	1)	≤ 50	> 50 ≤ 180	> 180 ≤ 400	> 400	Dimensions in mm Mass: 2,57 kg Scale: 1:1 (1:2) Size: A 3 CAD System: CREO
Fine		±0.5	±1	±1.5	±2	
Medium	X	±1	±2	±3	±4	
Coarse		±2	±3.5	±5	±6.5	
Tapped Holes acc. -		1) Tolerance Class Applied Crossmarked		Material No. PRO 010 200 2		
		Date of first issue: 2023-05-26		ECN-No. 511787		
		Doc.Code 005		Revision 1 x F		
		Language EN		Techn. Resp. 5059_AM		
		Sheet 1/1		Replacement for		

100mm