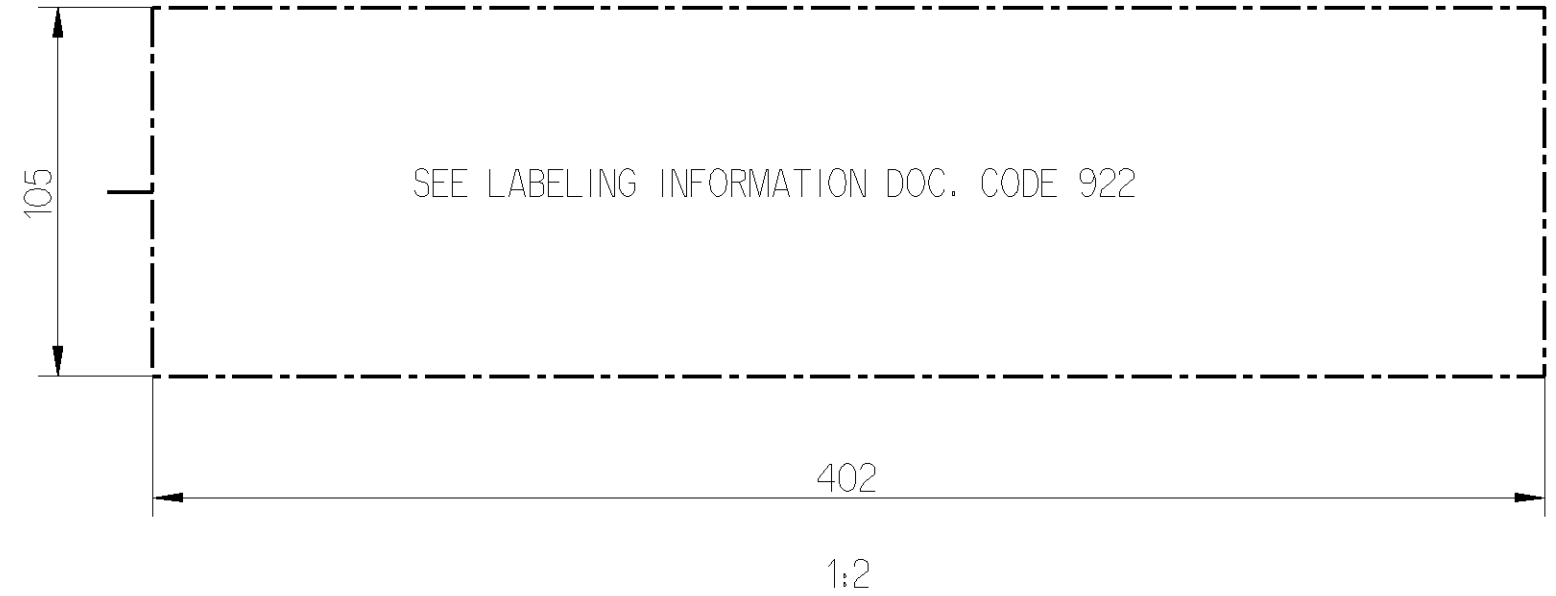
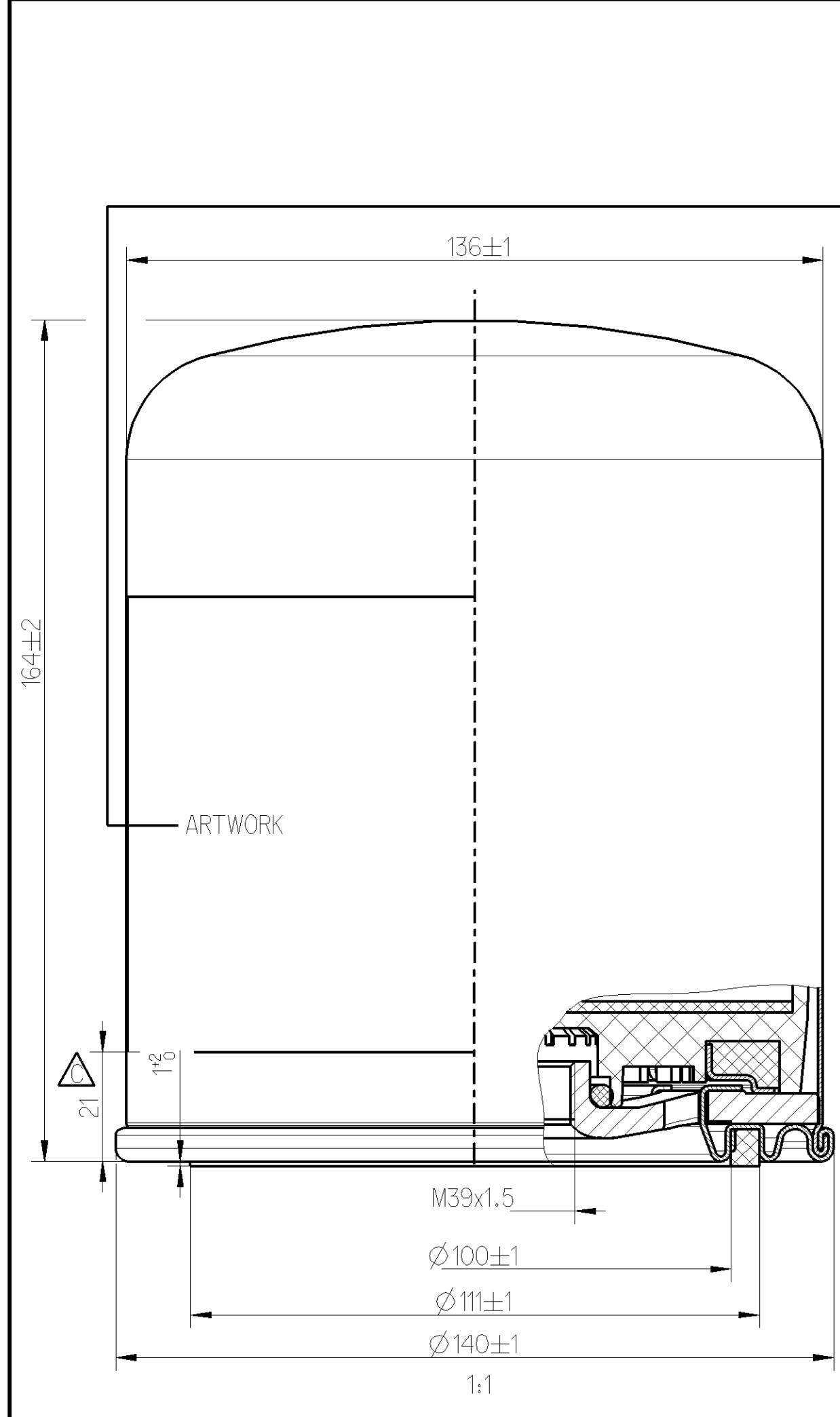


Non è permesso consegnare a terzi o riprodurre questo documento, né utilizzare il contenuto o renderlo comunque noto a terzi senza autorizzazione esplicita. Ogni infrazione costituirà un evidente abuso e comporterà il risarcimento dei danni subiti. È fatta riserva di tutti i diritti derivanti da brevetti o modelli.

Toute communication ou reproduction de ce document, toute exploitation ou communication de son contenu sont interdites, sauf autorisation expresse. Tout manquement à cette règle constitue un abus évident et expose son auteur au versement de dommages et intérêts. Tous droits de propriété industrielle réservés, notamment en matière de brevets et de modèles.

Copying of this document and giving it to others and the use or communication of the contents thereof, are forbidden without express authority. Contravention of this restriction will constitute an evident abuse and result in a liability to the payment of damages. All rights are reserved in the event of the grant of patent or registration of a utility model or design. This document is the subject of copyright.

Weitergabe sowie Vervielfältigung dieser Unterlage, Verwertung und Mitteilung ihres Inhalts nicht gestattet, soweit nicht ausdrücklich zugestanden. Zuwiderhandlungen stellen einen offensichtlichen Missbrauch dar und verpflichten zu Schadensersatz. Alle Rechte rufen den Fall der Patenterteilung oder Gebrauchsmuster-Eintragung vorbehalten.



WORKING PARAMETERS:

THERMAL RANGE OF APPLICATION: $-40^{\circ}\text{C} \dots +80^{\circ}\text{C}$
 WORKING PRESSURE: $P_e = \text{MAX.} 13 \text{ BAR}$
 BURST PRESSURE: $> 23 \text{ BAR}$
 PERMISSIBLE LEAKAGE: $\text{MAX. } 40 \text{ cm}^3/\text{min AT } 10 \text{ bar}$
 TEST PRESSURE
 TEXT: WHITE RAL 9010
 BACKGROUND: RED RAL 3002

DELIVERY STATE: WITHOUT EXTERNAL O-RING, FOR INTERNAL PRODUCTION ONLY

General Specification: ISO 8015, JED-334-1, Size ISO 14405 LP		Copyright ZF®		 DESICCANT CARTRIDGE	
Further Technical Data: Product Specification		Date	Signature		
Doc. Code: O35	Sheet: 1 To 3	Drawn	Pakula		
General Tolerances JED-261		Checked	Kolkowski		
Range of Nominal Dimensions (± mm)		Dimensions in mm		Material No.	
Class 1)	≤ 50	> 50 ≤ 180	> 180 ≤ 400	> 400	±
Fine	±0.5	±1	±1.5	±2	±3°
Medium	±1	±2	±3	±4	
Coarse	±2	±3.5	±5	±6.5	
Tapped Holes acc. -		Mass	Scale	Date of first issue: 2023-05-26	
1) Tolerance Class Applied Crossmarked		2,57 kg	1:1 (1:2)	Doc.Code Language Sheet	
		Size	CAD System	005 EN 1/1	
		A 3	CREO	PRO 124 001 2	
		ECN-No. Revision Techn. Resp.		Replacement for	
		511787 1 x C 5059_AM			

