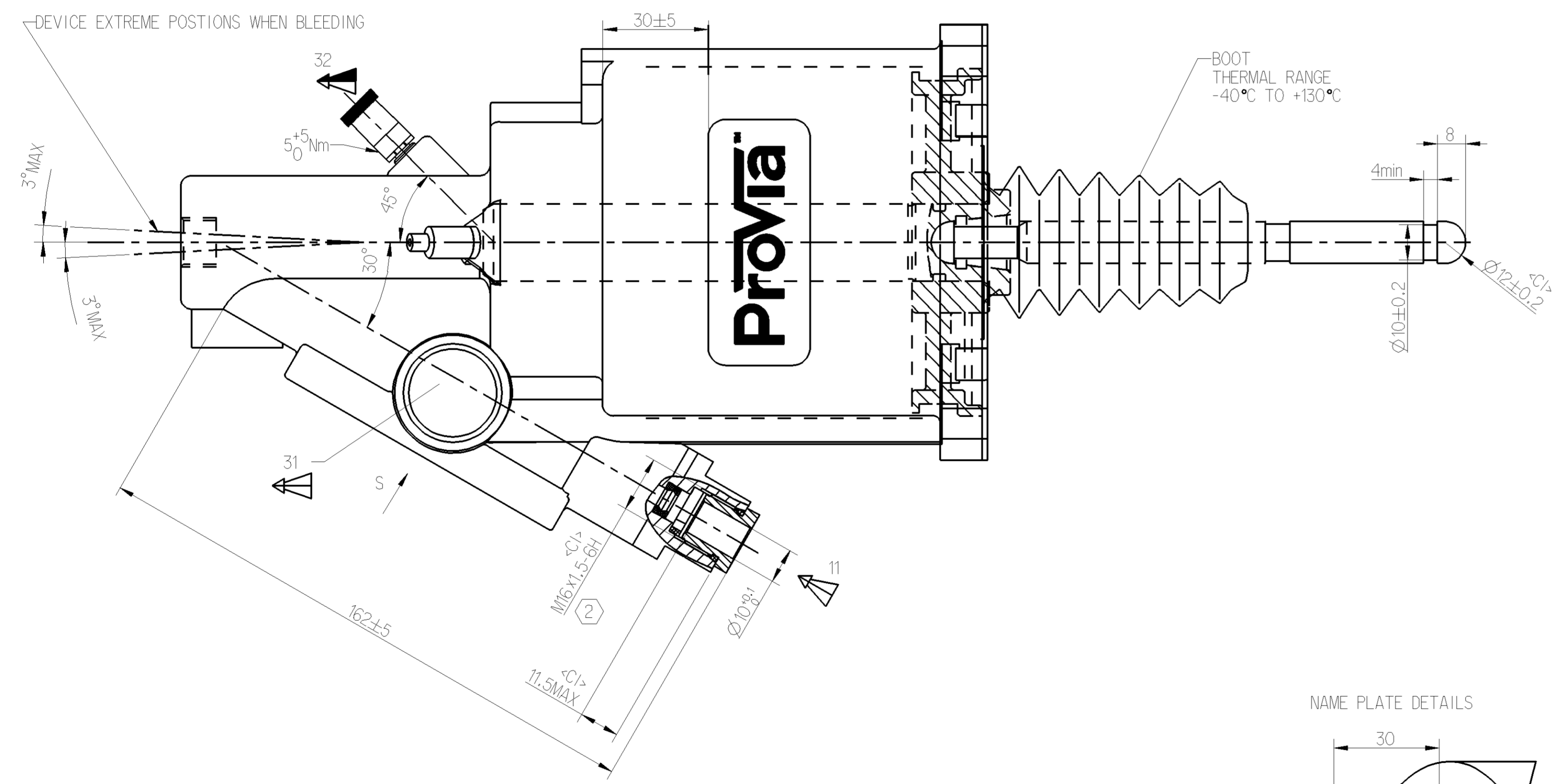
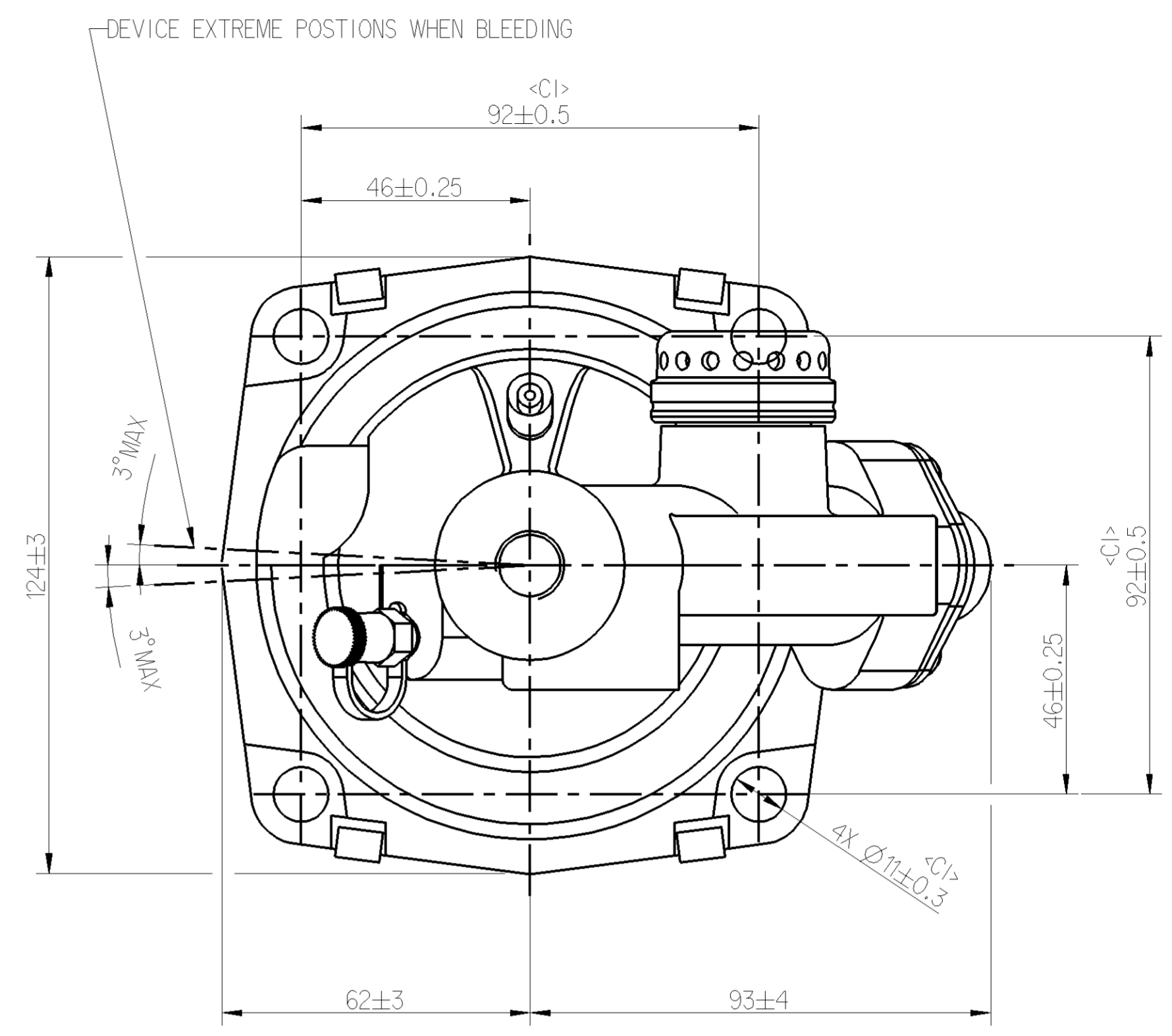
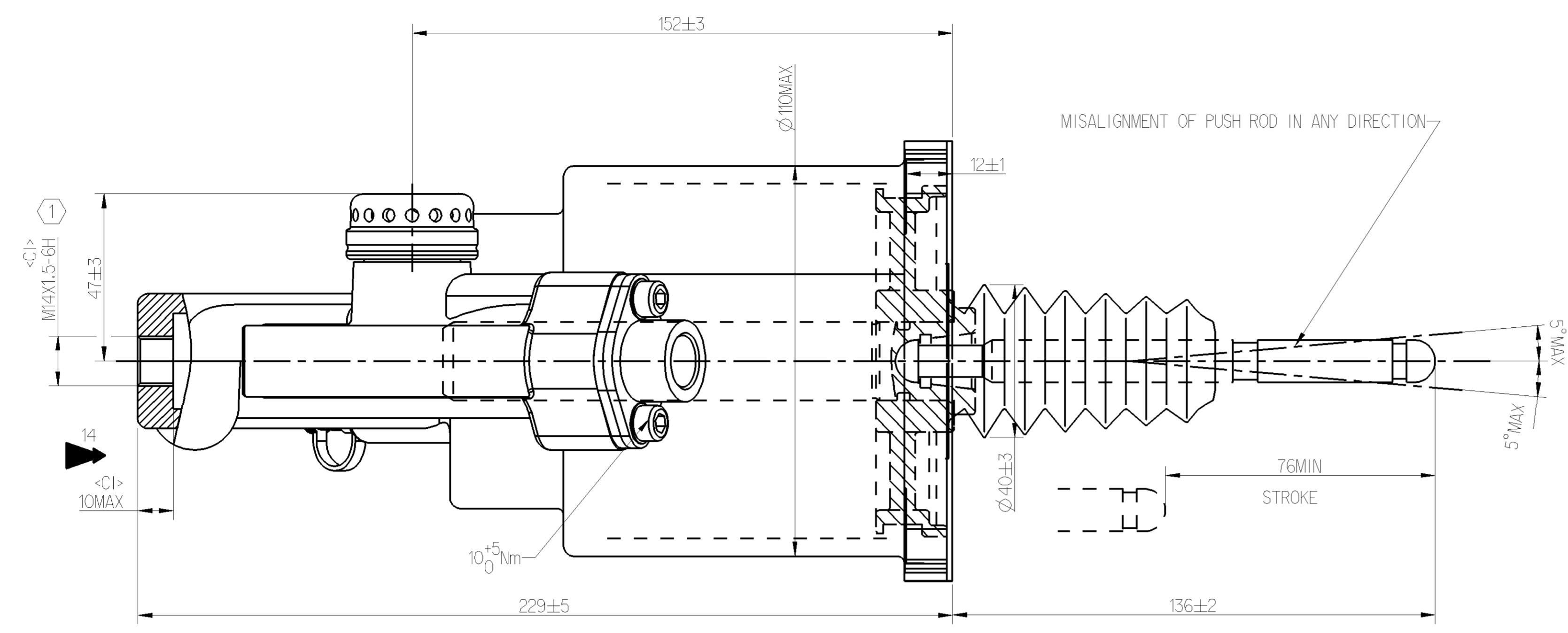


<P> SAFETY CHARACTERISTICS	0
<S> SIGNIFICANT CHARACTERISTICS	0
<CI> CUSTOMER INTERFACE	8

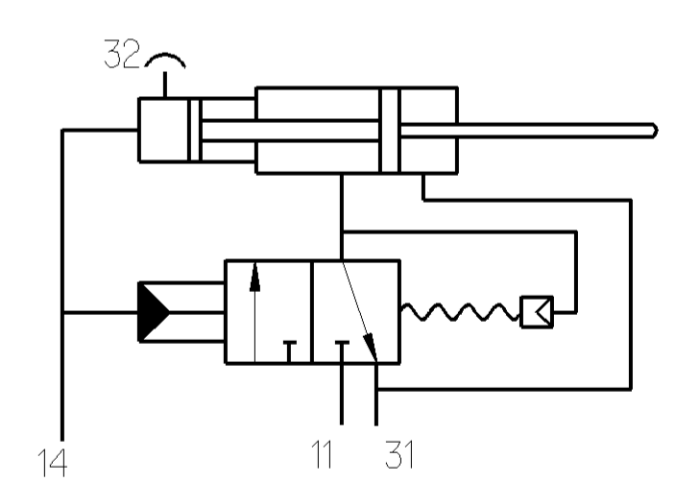


TECHNICAL INFORMATION:

1. HYDRAULIC TANK DIAMETER : Ø25mm
2. AIR TANK DIAMETER : Ø100mm;
3. HYDRAULIC WORKING PRESSURE : 4MPa
4. HYDRAULIC WORKING PRESSURE : 12MPa MAX
5. AIR WORKING PRESSURE : 1MPa MAX
6. WORKING TEMPERATURE : -40°C TO +80°C
7. MEDIUM : BRAKE OIL, AIR
8. WORKING STROKE : MAX 77mm

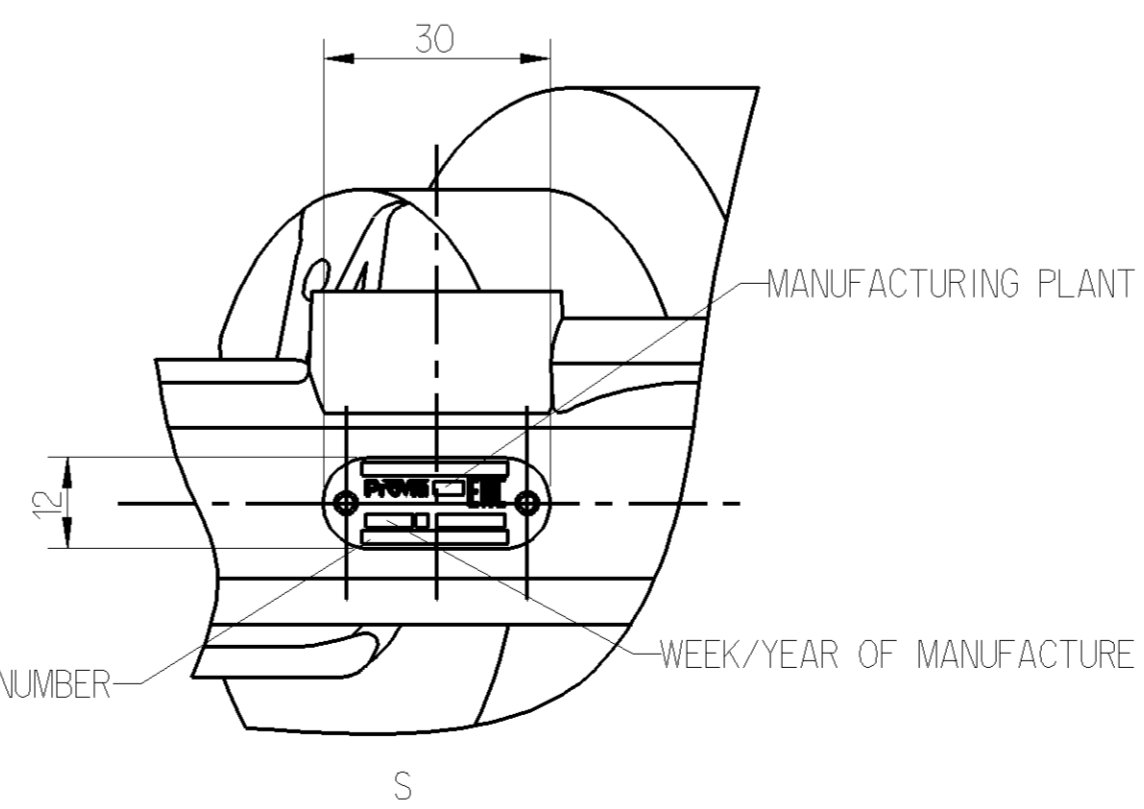
- ① TORQUE 25Nm MAX
- ② TORQUE 34Nm MAX

SCHEMATIC DIAGRAM

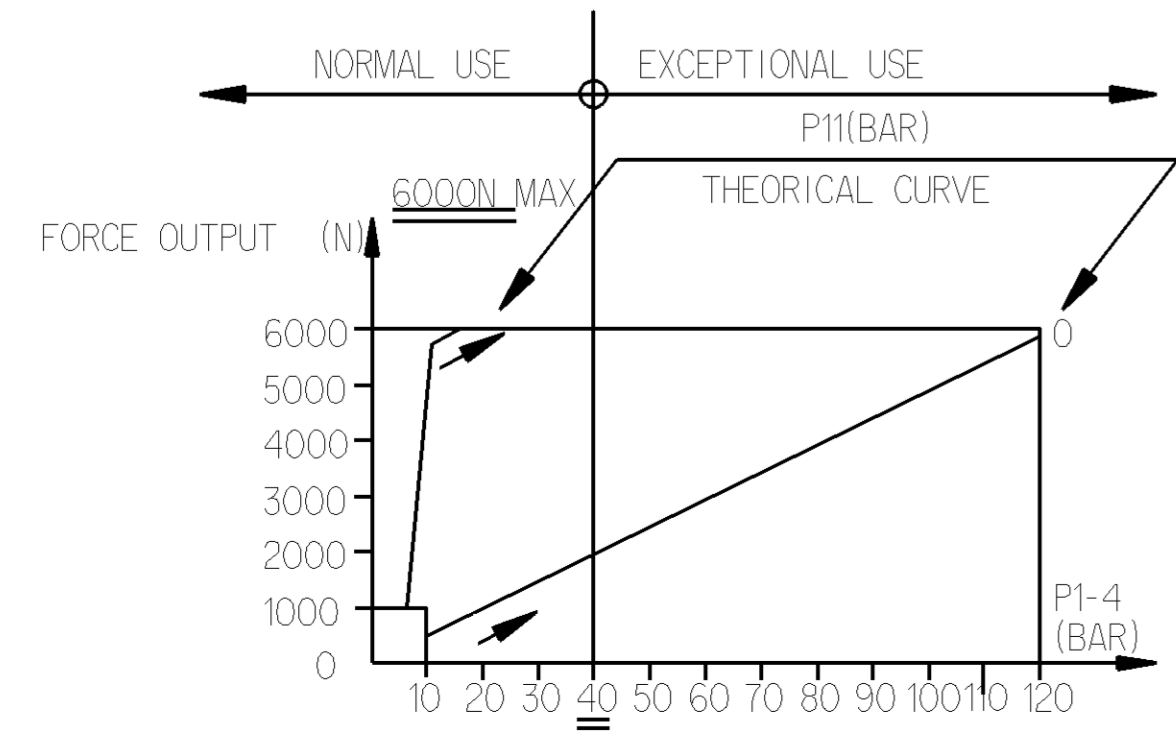


MARKING OF PORTS
 11-AIR INLET
 14-OIL INLET
 31-AIR EXHAUST
 32-BLEED SCREW

NAME PLATE DETAILS



ProVia IDENTIFICATION NUMBER



General Specifications: JED-334-1 - Size ISO 14405 LP		Copyright WABCO®	
Further Technical Data: PRO 411 014 0		Date	Signature
Doc. Code: 035		2021-08-09	M.P.
Sheet: 1 To 5		Checked	
General Tolerances JED-261		2021-08-10 Yerachelvan Expert	
Range of Nominal Dimensions (± mm)		Thomas Bilising	
Class	1) ≤ 50	2) 50 > 180	3) 180 ≤ 400
Fine	0.5	1.0	1.5
Medium	1.0	2.0	3.0
Coarse	2.0	3.5	5.0
Tapped Holes acc. -		±3°	
1) Tolerance Class Applied Crossmarked		Mass	Scale
		2.7 kg	NTS
		Size	CAD System
		A 1	CREO
		Material No. PRO 411 014 0	
		Date of first issue	2021-08-10
		Doc. Code	005
		Language	EN
		Sheet	1/1
		Rev.	5630_AM
		Techn. Resp.	
		Replacement for	