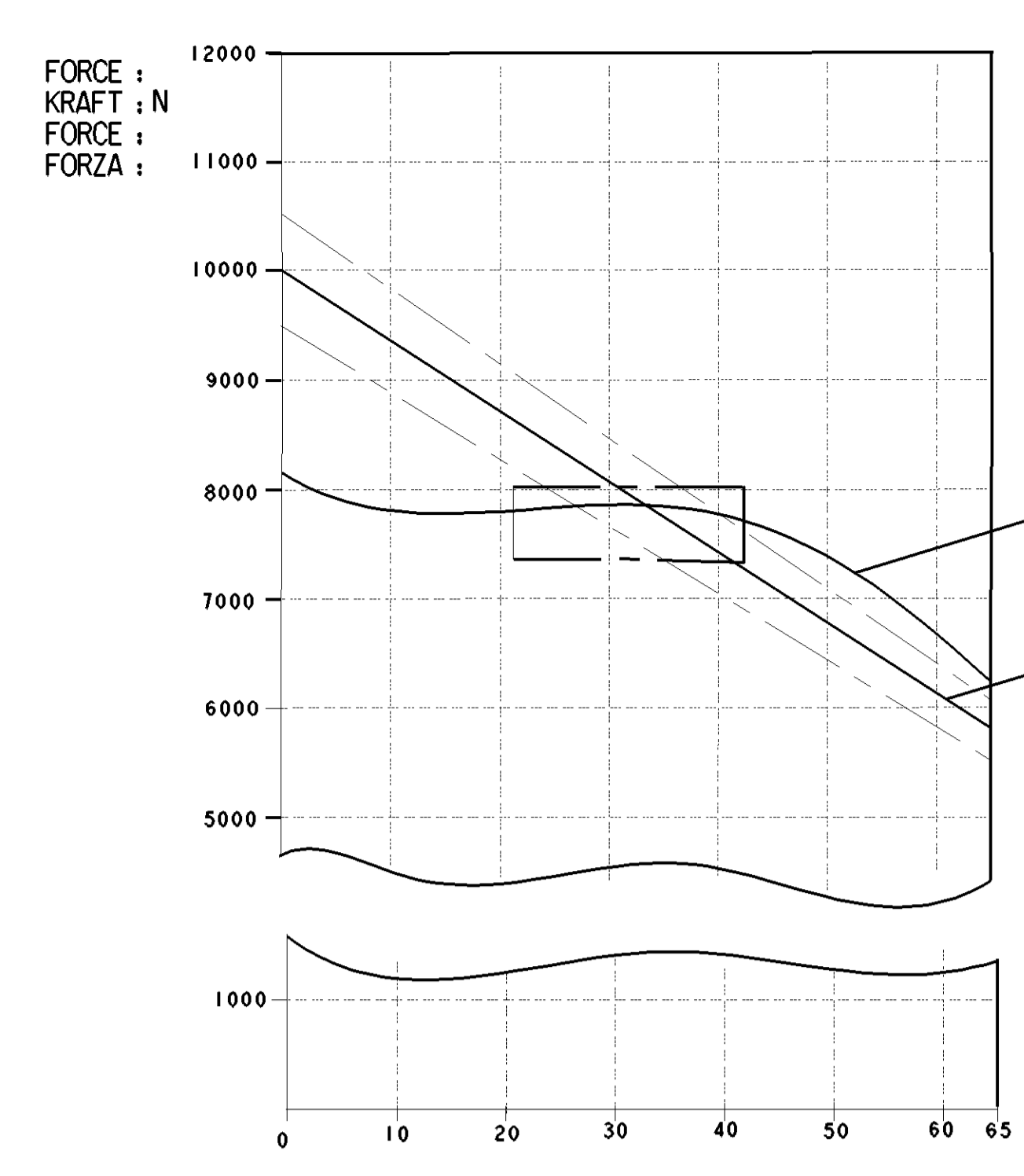


SURFACE PROTECT. OBERFL. SCHUTZ	
I	POWDER COATING JED-240-7
II	Zn JED-256-5
III	PHOSPHATING & OILING JED-371
IV	AL. JED-259
V	RUBBER / PLASTIC
VI	MS
TECHNICAL DATA TECHNISCHE DATEN	



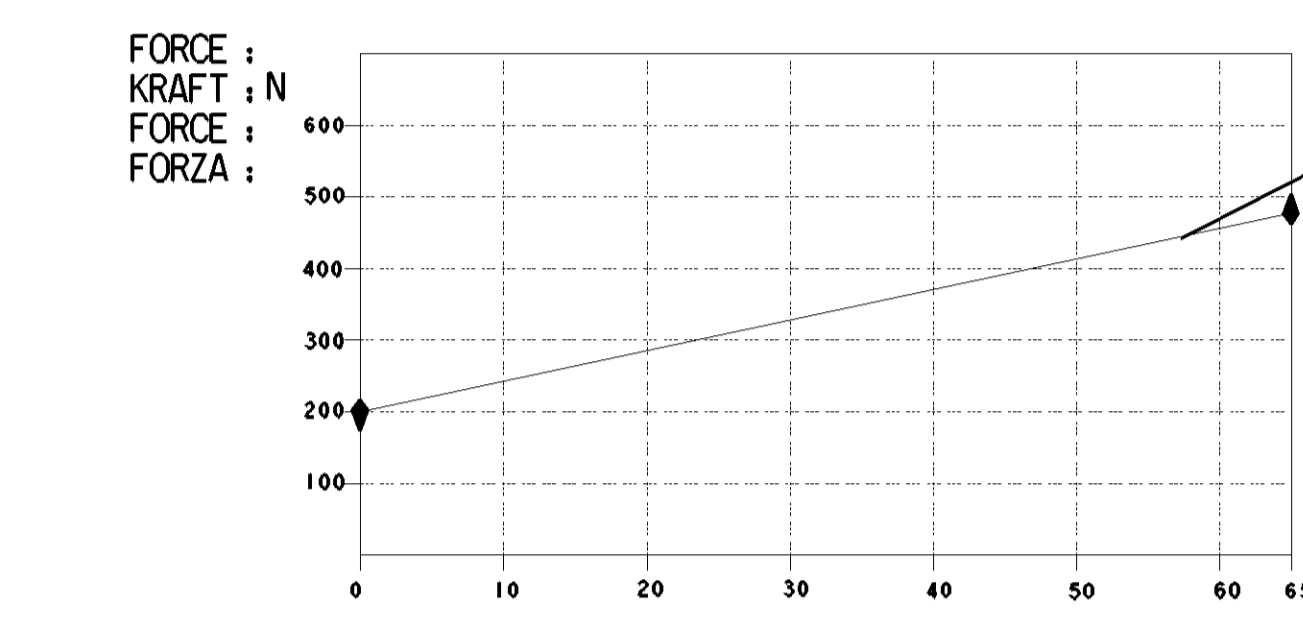
AIR VOLUME OF SERVICE BRAKE PART AT 2/3 OF ITS STROKE
 HUBVOLUMEN DES BETRIEBSBREMSTEILES BEI 2/3 HUB
 VOLUME D'AIR DU DISPOSITIF DU FREIN DE SERVICE A 2/3 DE LA COURSE
 VOLUME D'ARIA DELLA SEZIONE DI FRENO DI SERVIZIO A 2/3 DELLA CORSA : ca. 0.88x10³ cm³

AIR VOLUME OF SPRING BRAKE PART
 HUBVOLUMEN DES FEDERSPEICHERS
 VOLUME D'AIR DU DISPOSITIF RESSORT
 VOLUME D'ARIA DELLA SEZIONE A MOLLA : ca. 1.60x10³ cm³

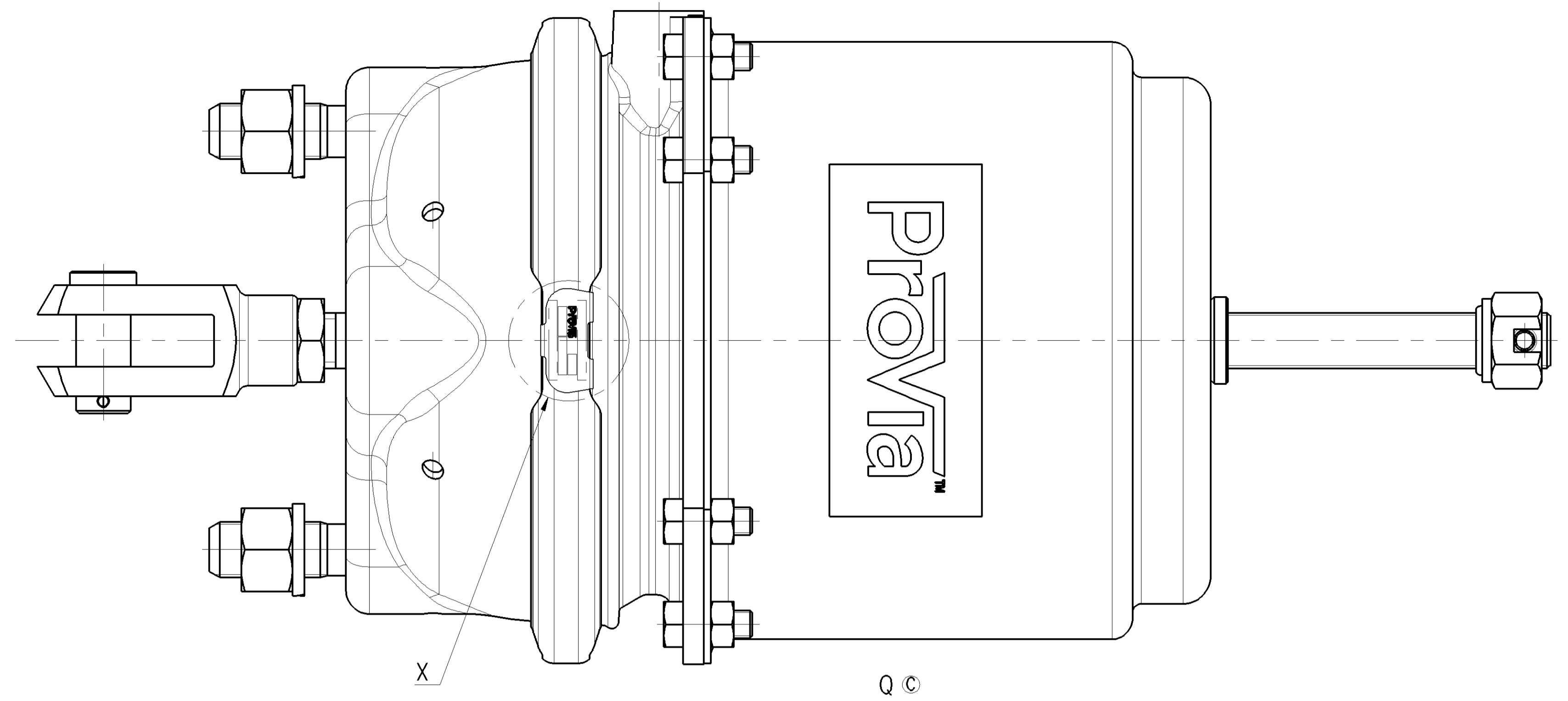
OUTPUT FORCE OF SERVICE BRAKE PART AT 2/3 OF ITS STROKE
 KRAFTABGABE DES BETRIEBSBREMSTEILES BEI 2/3 HUB
 EFFORT DE POUSSEE DU DISPOSITIF DU FREIN DE SERVICE SOUS 2/3 DE LA COURSE
 FORZA DI SPINTA DELLA SEZIONE DI FRENO DI SERVIZIO PER 2/3 DELLA CORSA : 6.5 bar

OUTPUT FORCE OF SPRING BRAKE PART, RELEASE PRESSURE
 KRAFTABGABE DES FEDERSPEICHERS, LOESEDRUCK
 EFFORT DE POUSSEE DU DISPOSITIF RESSORT, PRESSION DE DESSERRAGE
 FORZA DI SPINTA DELLA SEZIONE A MOLLA, PRESSIONE DI RILASCIO : 4.9±0.4 bar

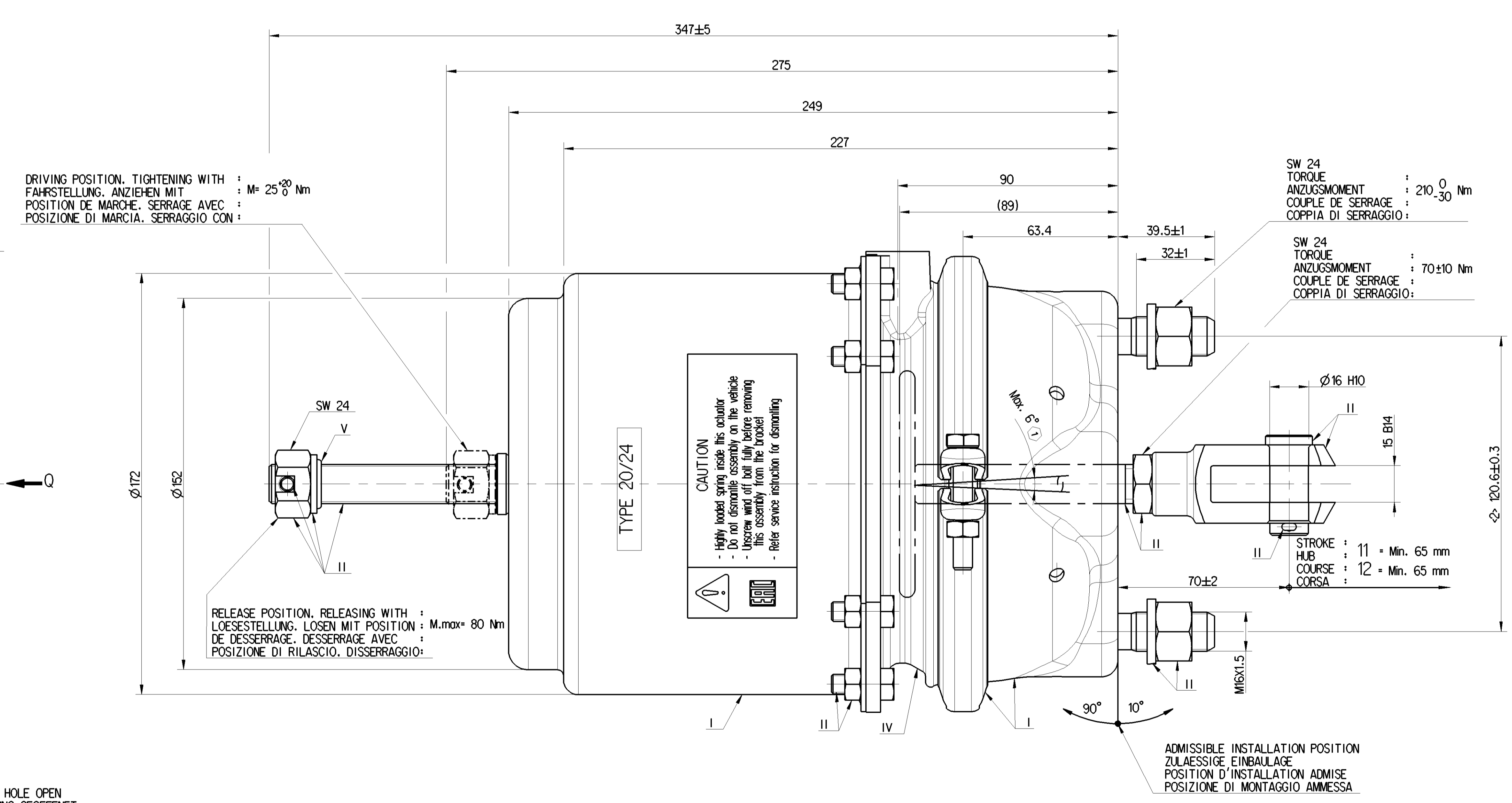
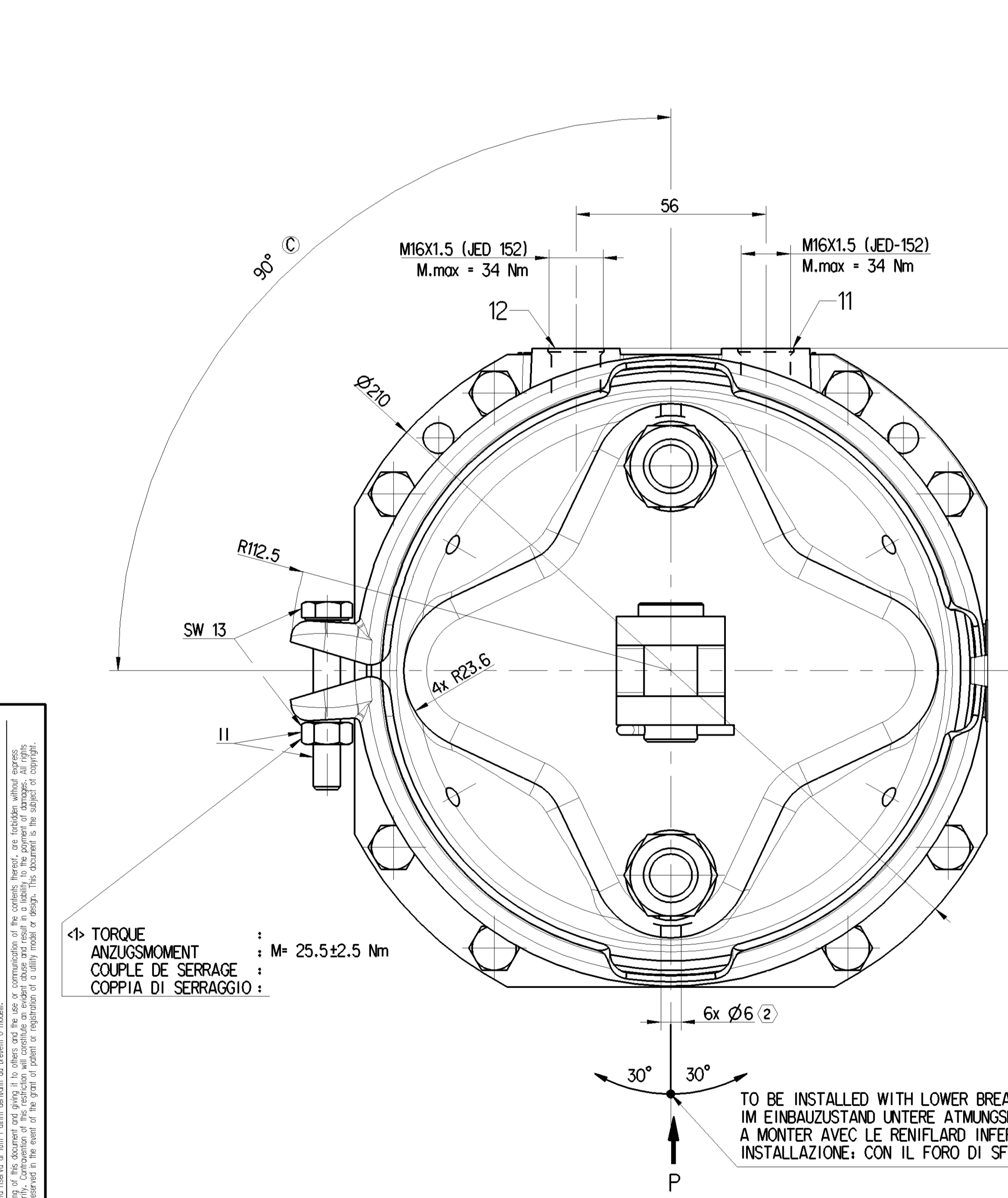
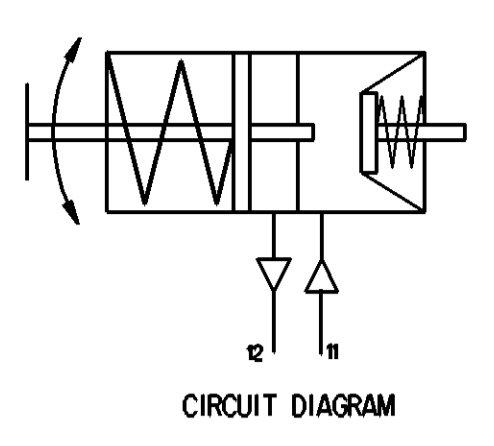
NOMINAL VALUES GIVEN FOR SERVICE SIDE, TOLERANCE BAND AS PER DIN 74060-1
 NOMINAL VALUES GIVEN FOR SPRING SIDE, TOLERANCE BAND ±5%



FORCE OF RETURN SPRING OF SERVICE BRAKE PART
 RUECKSTELLFEDERKRAFT DES BETRIEBSBREMSTEILES
 EFFORT DU RESSORT DE RAPPEL DU DISPOSITIF DU FREIN DE SERVICE
 FORZA DELLA MOLLA DI RITORNO DELLA SEZIONE DI FRENO DI SERVIZIO



Ø16 H10	+0.07
15 B14	+0.68
	+0.16



DRIVING POSITION, TIGHTENING WITH :
 FAHRSTELLUNG, ANZIEHEN MIT : M= 25±2 Nm
 POSITION DE MARCHÉ, SERRAGE AVEC :
 POSIZIONE DI MARCIA, SERRAGGIO CON :

RELEASE POSITION, RELEASING WITH :
 LOESSTELLUNG, LOSEN MIT POSITION : M.max= 80 Nm
 DE DESSERRAGE, DESSERRAGE AVEC :
 POSIZIONE DI RILASCIO, DISSERRAGGIO :

CAUTION
 - highly loaded spring inside this actuator
 - Do not disassemble assembly on the vehicle
 - This assembly is not for the truck
 - Refer service instruction for dismantling

SW 24
 TORQUE : 210⁰ Nm
 ANZUGSMOMENT : 210⁰ Nm
 COUPLE DE SERRAGE : 210⁰ Nm
 COPPIA DI SERRAGGIO :

SW 24
 TORQUE : 70±10 Nm
 ANZUGSMOMENT : 70±10 Nm
 COUPLE DE SERRAGE : 70±10 Nm
 COPPIA DI SERRAGGIO :

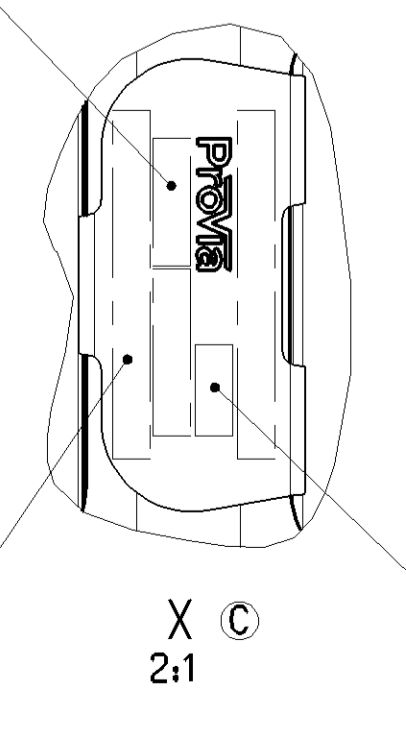
STROKE : 11 = Min. 65 mm
 HUB : 11 = Min. 65 mm
 COURSE : 12 = Min. 65 mm
 CORSA :

ADMISSIBLE INSTALLATION POSITION
 ZULAESSIGE EINBAULAGE
 POSITION D'INSTALLATION ADMISE
 POSIZIONE DI MONTAGGIO AMMESSA

TO BE INSTALLED WITH LOWER BREATHER HOLE OPEN
 IM EINBAUZUSTAND UNTERE ATMUNGSBOHRUNG GEOEFFNET
 A MONTER AVEC LE RENIFLARD INFERIEUR OUVERT
 INSTALLAZIONE: CON IL FORO DI SFILATO INFERIORE APERTO

WEEK / YEAR MANUFACTURE
 FERTIGUNGSWOCHE/JAHR
 SEMAINE/ANNEE DE FABRICATION
 SETTIMANA/ANNO DELLA FABBRICAZIONE

ProVia IDENTIFICATION NUMBER
 ProVia TEILE NUMBER
 NUMERO D' IDENTIFICATION ProVia
 NUMERO D' IDENTIFICAZIONE



MANUFACTURING PLANT
 PRODUKTIONSTÄTTE: JED-225
 LIEU DE FABRICATION
 LUOGO DI FABBRICAZIONE

SAFETY CHARACTERISTICS
 SICHERHEITSMERKMALE
 CARACTÉRISTIQUES DE SÉCURITÉ
 CARATTERISTICHE DI SICUREZZA

SIGNIFICANT CHARACTERISTICS
 WESENTLICHE MERKMALE
 CARACTÉRISTIQUES SIGNIFIANTES
 CARATTERISTICHE SIGNIFICATIVE

MEDIUM : AIR MEDIUM : LUFT FLUIDE : AIR FLUIDO : ARIA	
NOMINAL DIAMETER : NENNWEITE : MIN Ø8.5 DIAMETRE NOMINAL : DIAMETRO NOMINALE :	
WIDTH ACROSS FLATS SW SCHLIESSELWEITE SURPLATS LARGHEZZA IN CHIAVE	
THERMAL RANGE OF APPLICATION : THERMISCHER ANWENDUNGSBEREICH : -40°C...+80°C GAMME D'APPLICATION THERMIQUE : CAMPO TERMICO D'APPLICAZIONE :	
PORT : SERVICE BRAKING SYSTEM, WORKING PRESSURE : Pe max. = 10 bar ANSCHLUSS:11 BETRIEBSBREMSEANLAGE, BETRIEBSDRUCK : ORIFICE : DISPOSITIF DE FREINAGE DE SERVICE, PRESSION D'UTILISATION : ORIFIZIO : DISPOSITIVO DI FRENATURA DI SERVIZIO, PRESSIONE DI ESERCIZIO :	(TEMPORARILY / KURZZEITIG / DE COURTE DUREE / (BREVE TEMPO SOLO) : Pe max. = 13 bar
PORT : SPRING BRAKE CYLINDER, WORKING PRESSURE : Pe max. = 8.5 bar ANSCHLUSS:12 FEDERSPEICHERZYLINDER, BETRIEBSDRUCK : ORIFICE : CYLINDRE A RESSORT, PRESSION D'UTILISATION : ORIFIZIO : CILINDRO A MOLLA, PRESSIONE DI ESERCIZIO :	(TEMPORARILY / KURZZEITIG / DE COURTE DUREE / (BREVE TEMPO SOLO) : Pe max. = 11 bar
DEFLECTION : AUSLEHMUNG : max. 6° AT STROKE BEI HUB DEFLEXION : A COURSE DEVIATION : A CORSA	0 mm
② OPEN BREATHER HOLE OFFEN ATMUNGSBOHRUNG OUVERT TROU RENIFLEUR APERTO FORO RESPIRATORE	
DELIVERY ANLIEFERUNG LIVRAISON FORNITURA	RELEASE POSITION LOESSTELLUNG POSITION DE DESSERRAGE POSIZIONE DI RILASCIO
	DRIVING POSITION FAHRSTELLUNG POSITION DE MARCHÉ POSIZIONE DI MARCIA
UNIT DRAWN WITH AIR APPLIED AT PORT 12 EINHEIT MIT LUFT APPLIERT AN PORT 12 UNIDADE DESENHADA COM ARIA APLICADA NA PORTA 12 UNITÀ DISEGNATA CON ARIA APPLICATO A PORTA 12	

General Specifications JED-334-1, Size ISO 14402 LP		Copyright © 2017		ProVia	
Further Technical Data PRO 430 001 0		Date: 2017-09-15		System: SPRING BRAKE ACTUATOR CAM	
Doc. Code: 035		Sheet: 1/1		To: 4	
General Tolerances: ISO 2768		Drawing: Negeron		Scale: 1:1	
Range of Nominal Dimensions (d in mm)		Drawing: Assikumar		Date of 1st issue: 2016-04-23	
Class	1	2	3	4	5
Max	±0.05	±0.10	±0.15	±0.20	±0.30
Min	±0.05	±0.10	±0.15	±0.20	±0.30
Medium	X 1.0	2.0	3.0	4.0	±3°
Course	2.0	3.5	5.0	6.5	
Tapped holes acc. JED-152		9.991		1/1	
1) Tolerance class: H7/g6		A 0		PRO 430 001 0	
		0350		005 ML 1/1	