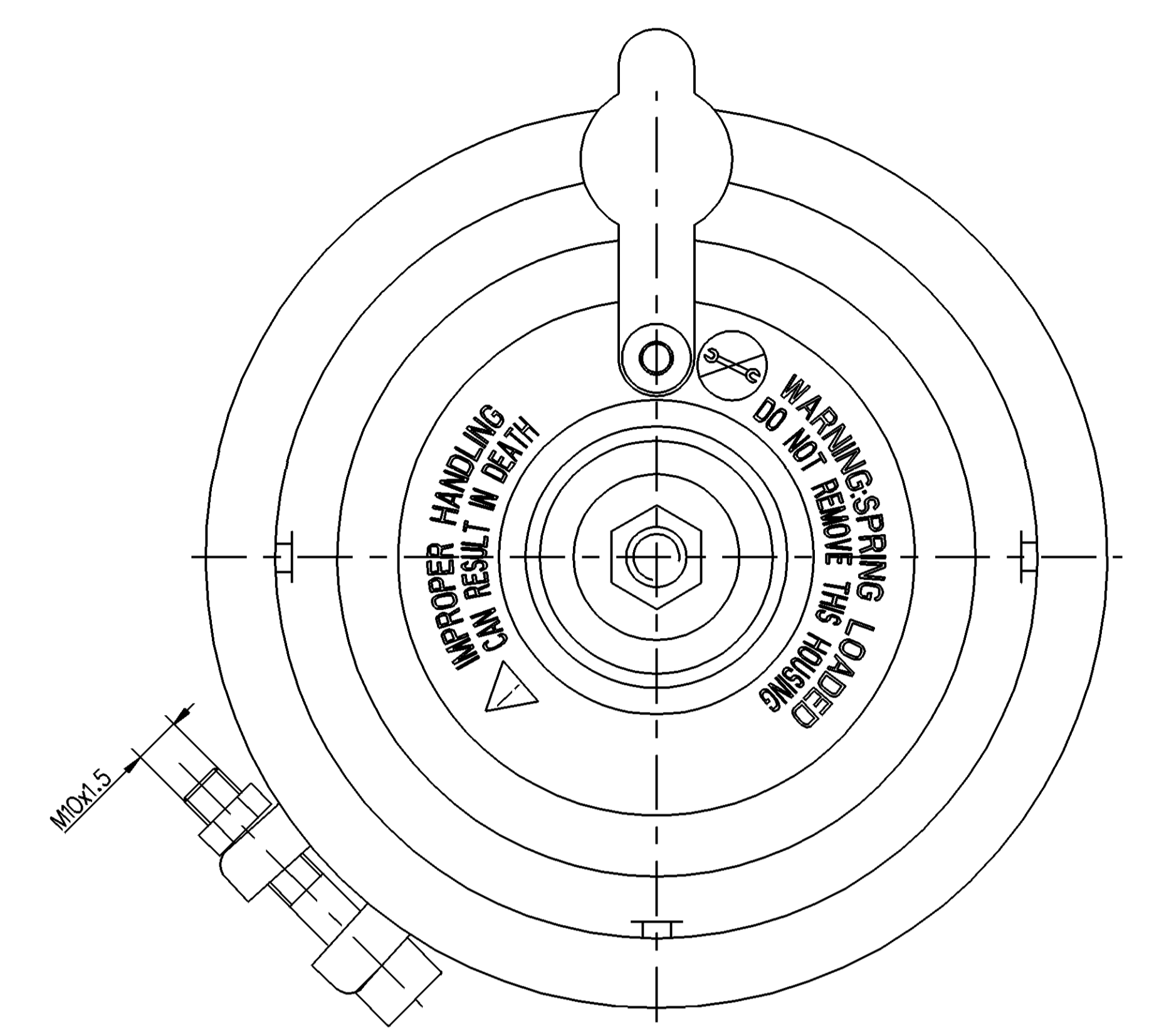
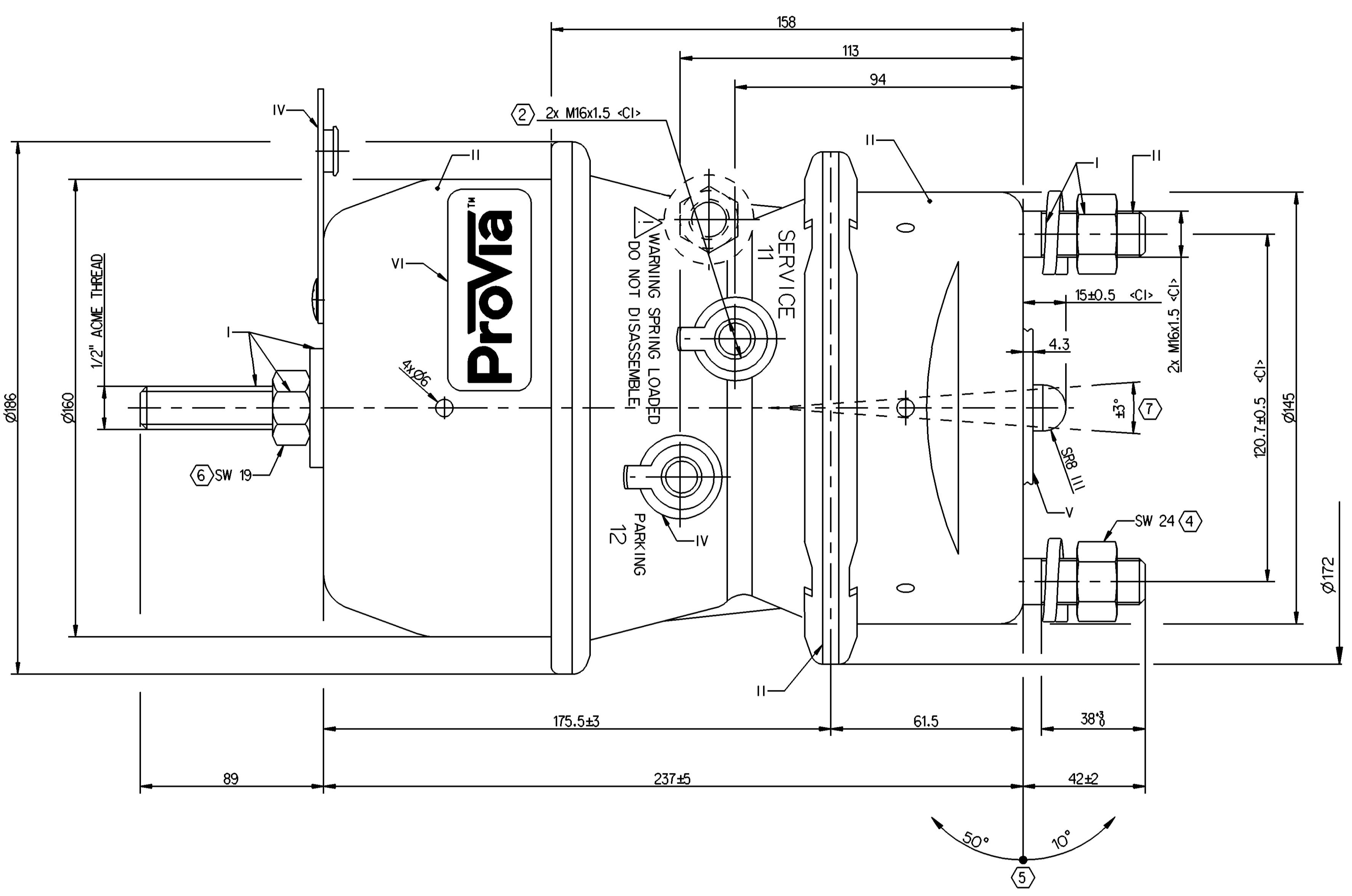
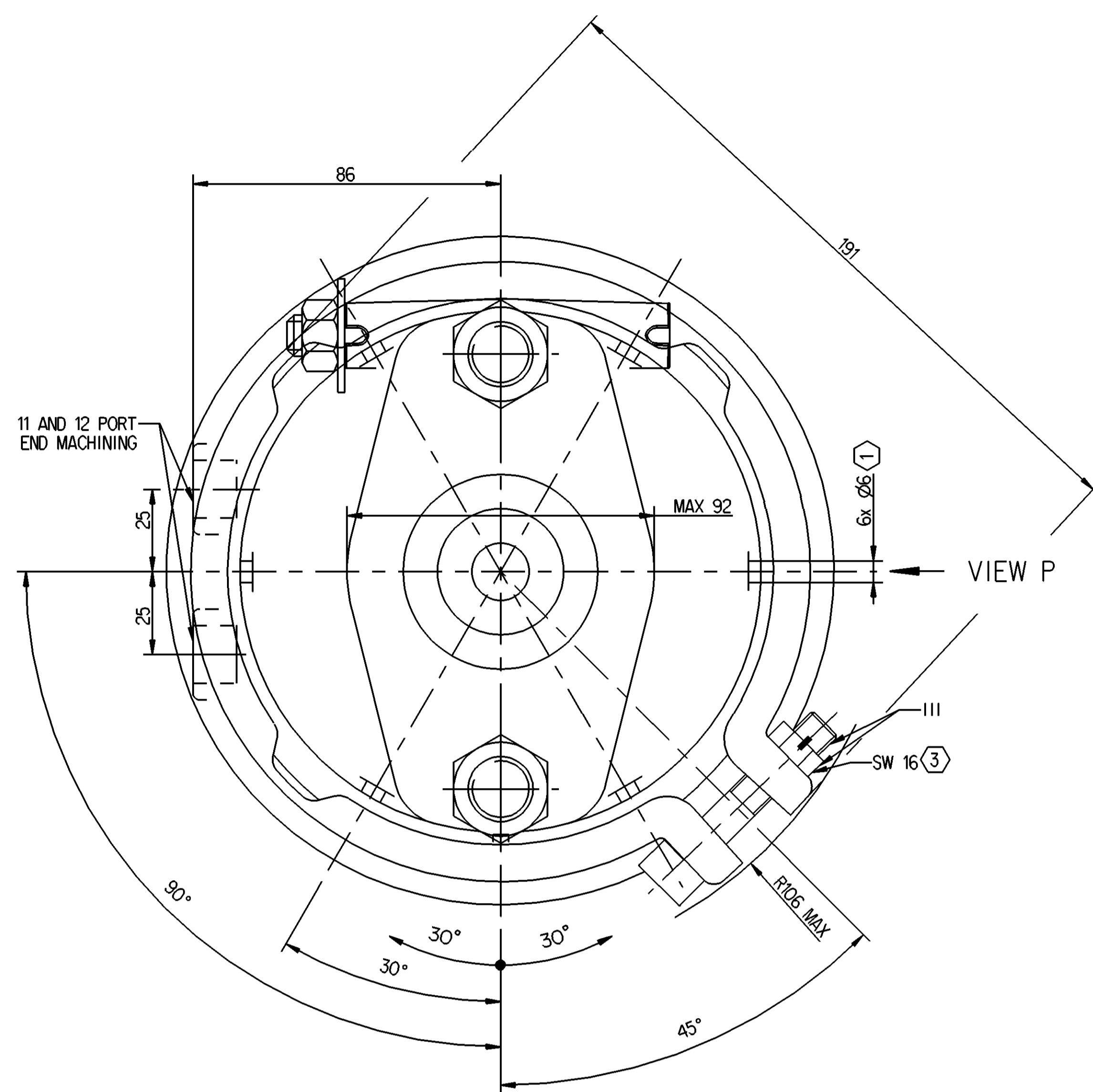


SURFACE PROTECTION	
I ZINC PLATED WITH CR6+ FREE	
II ELECTRO-PAINTING	
III DACROMET	
IV HARD POLYETHYLENE	
V RUBBER	
VI STICKER	

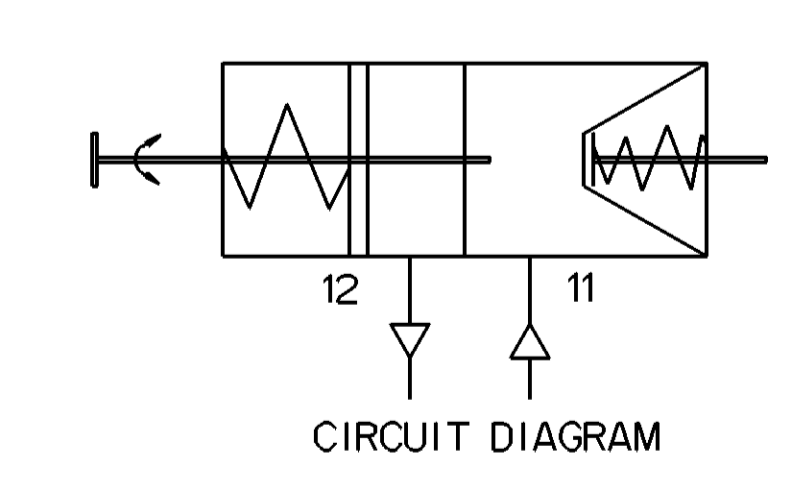
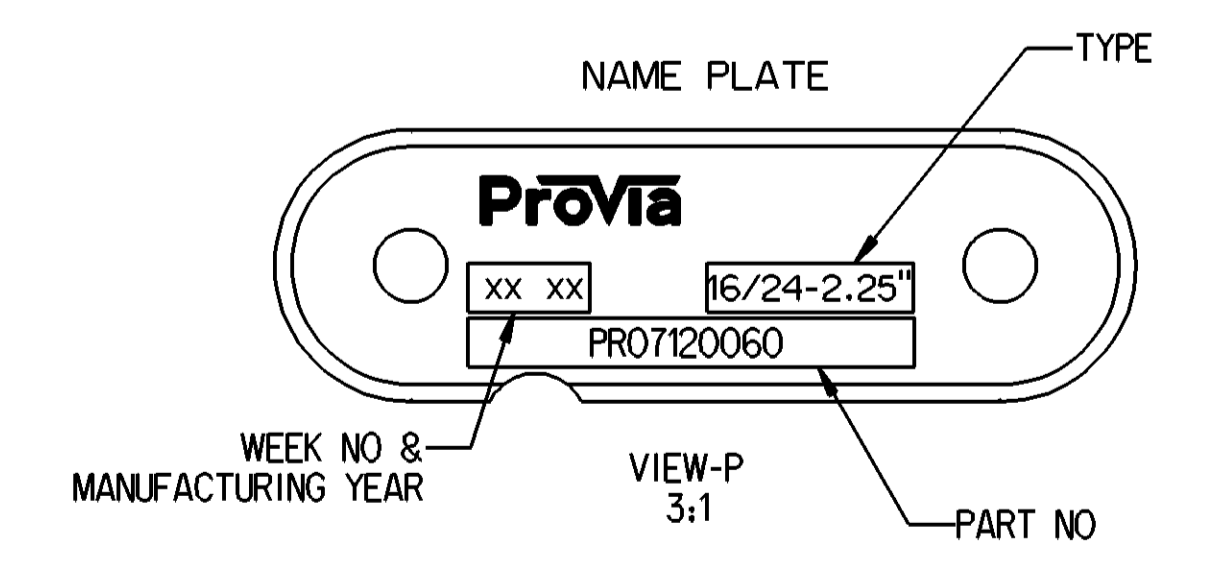
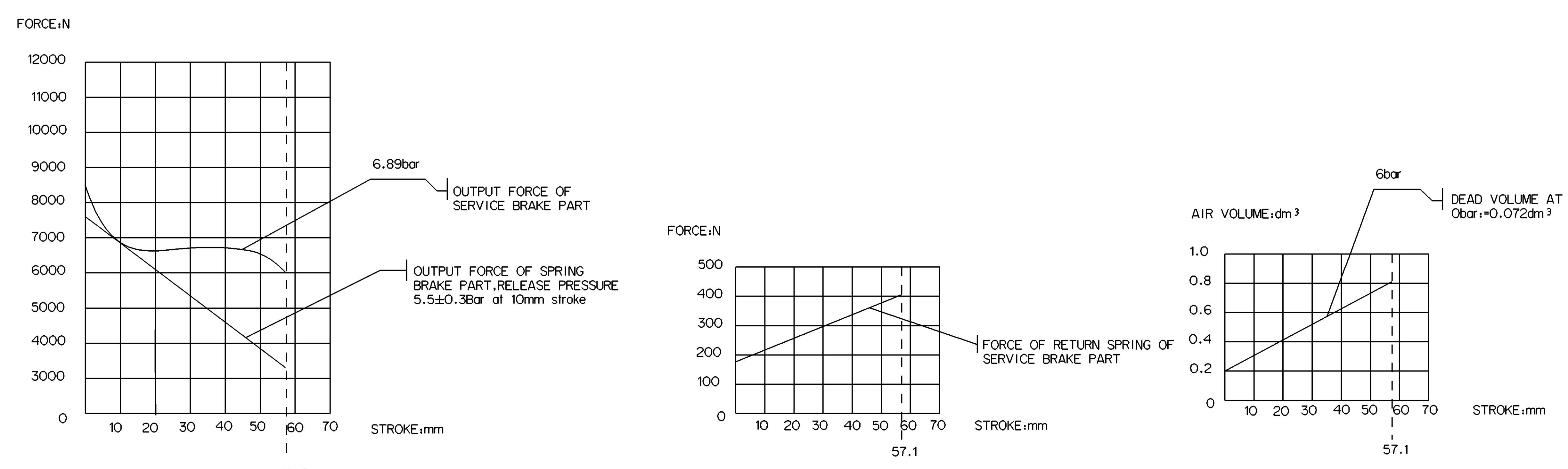
SAFETY CHARACTERISTICS	0
SIGNIFICANT CHARACTERISTICS	0
CUSTOMER INTERFACE	4



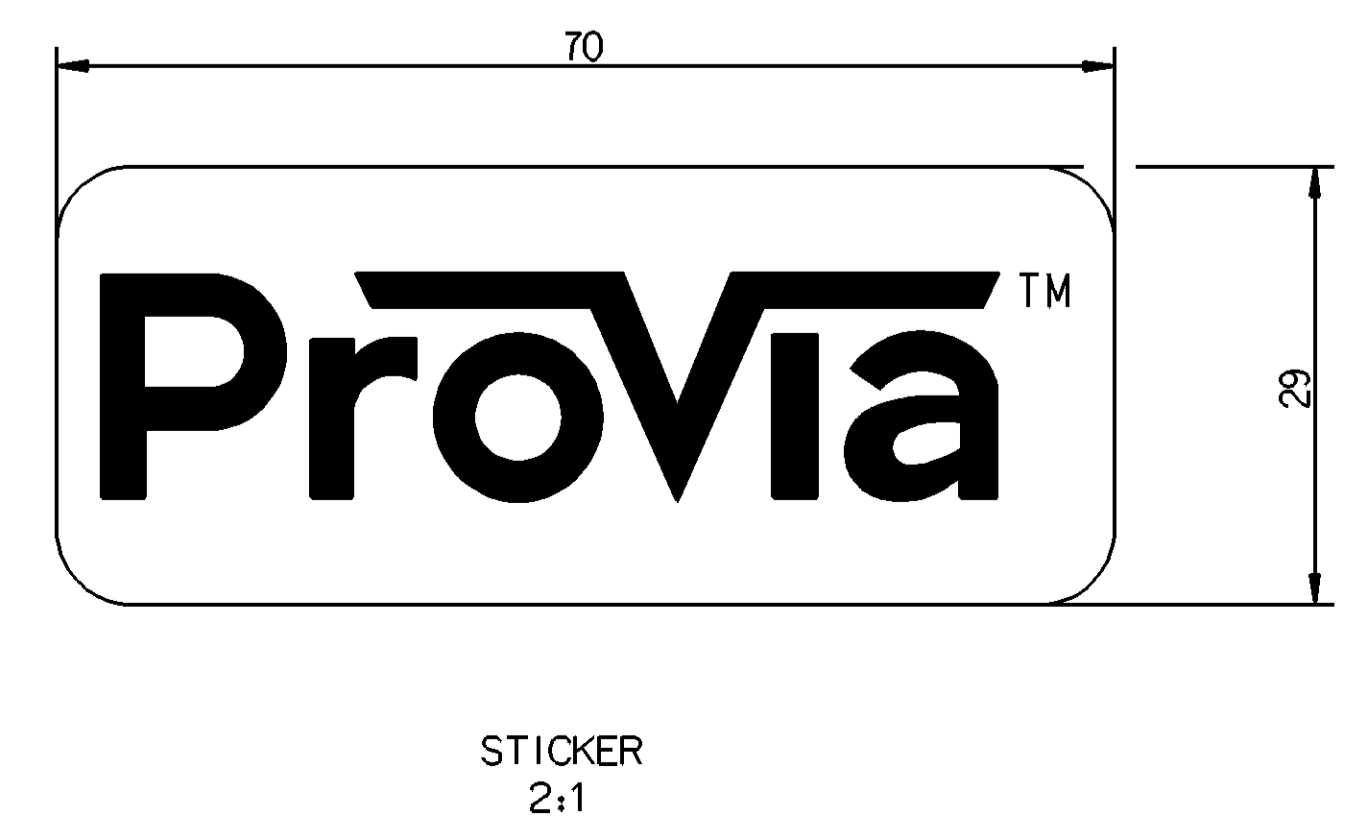
TECHNICAL REQUIREMENT:

1. STROKE:
PARKING CHAMBER: ≥ 57.1mm
SERVICE CHAMBER: ≥ 57.1mm
2. WORKING PRESSURE:
SERVICE CHAMBER P_{max}: 10.5 Bar. TEMPORARILY 13 Bar
PARKING CHAMBER P_{max}: 8.5 Bar. TEMPORARILY 10 Bar
3. WORKING TEMPERATURE: -40°C.....+80°C
4. THE DRAWING IS AT CAGED CONDITION, THE PARKING CHAMBER WILL BE AT UNCAGED CONDITION DURING SHIPMENT
5. WORKING MEDIUM: AIR
6. THIS PRODUCT MEETS THE REQUIREMENT OF QC/T 790 STANDARD

GRAPHS FOR INFORMATION ONLY



- ① OPEN BREATHER HOLE
- ② TORQUE: 34Nm MAX
- ③ TORQUE: 35-40Nm
- ④ TORQUE: 220±20 Nm
- ⑤ ADMISSIBLE INSTALLATION POSITION
- ⑥ TORQUE: MAX. 25Nm
- ⑦ DEFLECTION: 6° MAX AT STROKE 0mm



General Specification: ISO 8768, JIS-B5514, Size 020 14405 LP		Copyright: 2023		ProVia							
Doc. Code: 035	Sheet: 1	Date: 2023-04-27	Drawn: Saravanan	DOUBLE DIAPHRAGM TRISTOP 16/24							
Rev.:	1	2023-04-28	Manivanan	PRO 712 006 0							
Class:	1	2	50	2	80	2	400	2	400	2	400
File:	±0.05	±0.02	±0.5	±0.2							
Medium:	X	±1	±2	±3	±4	±5					
Course:	±2	±3.5	±5	±6.5							
Size:	1:1 (2,1:1)										
Scale:	±3°										
Appr.:	A 0										
Drawn:	SARAVANAN										
Checked:	MANIVANAN										
Approved:											
Date of Issue:	2023-04-28										
Doc. Code:	005										
Rev.:	1/1										
Standard:	EN										
Revision:	1										
Scale:	1:1										
Appr.:	A 0										