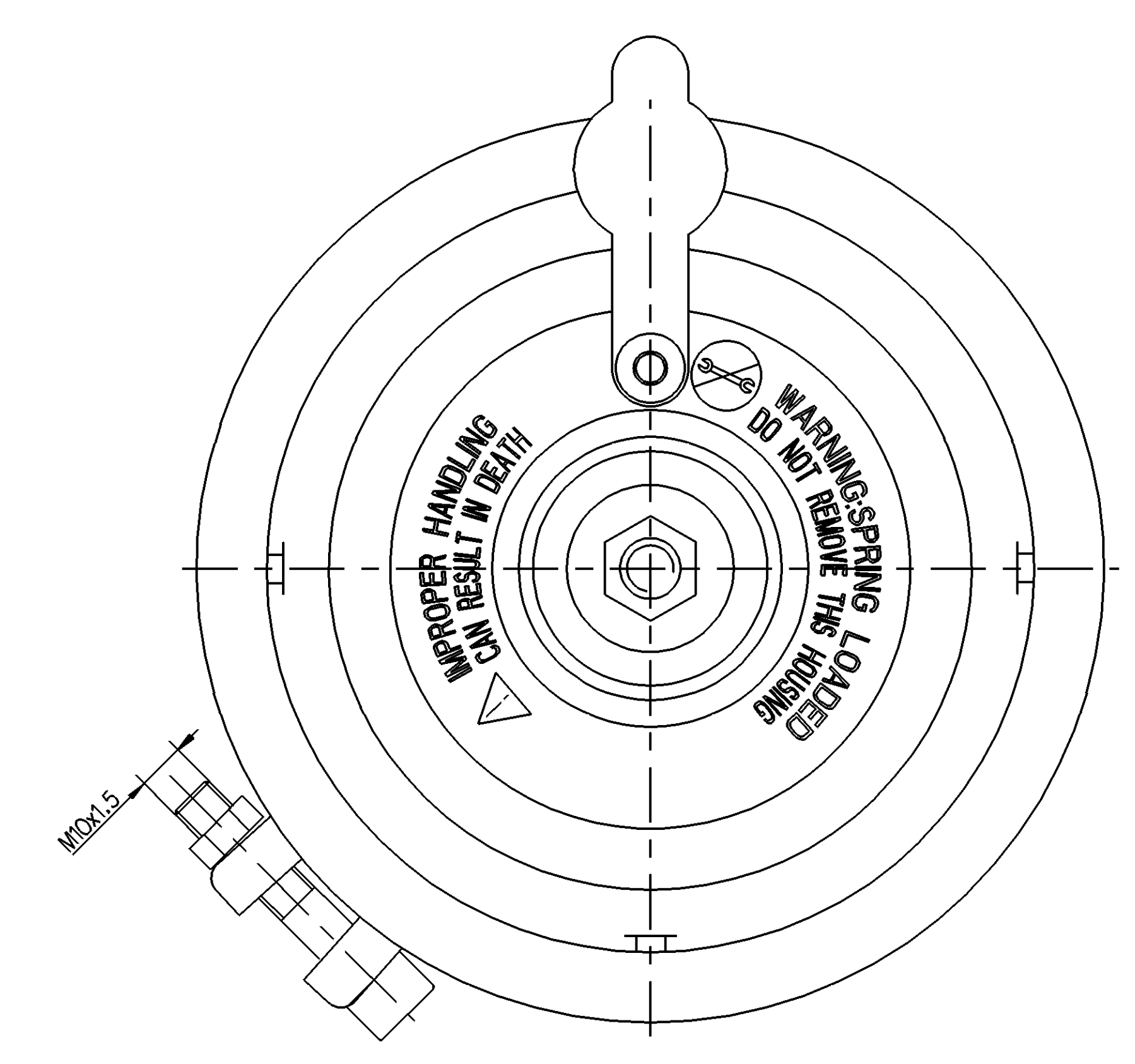
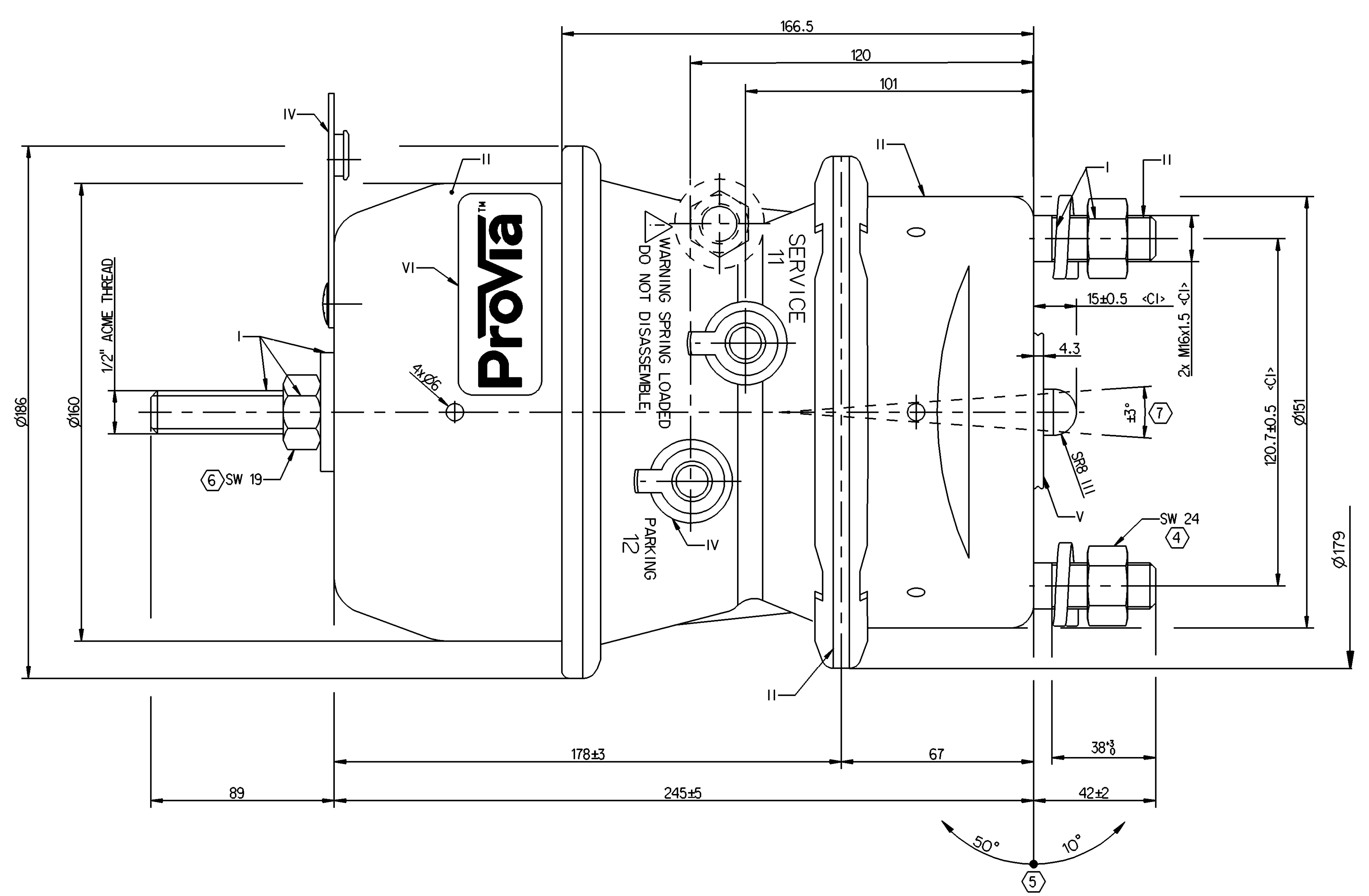
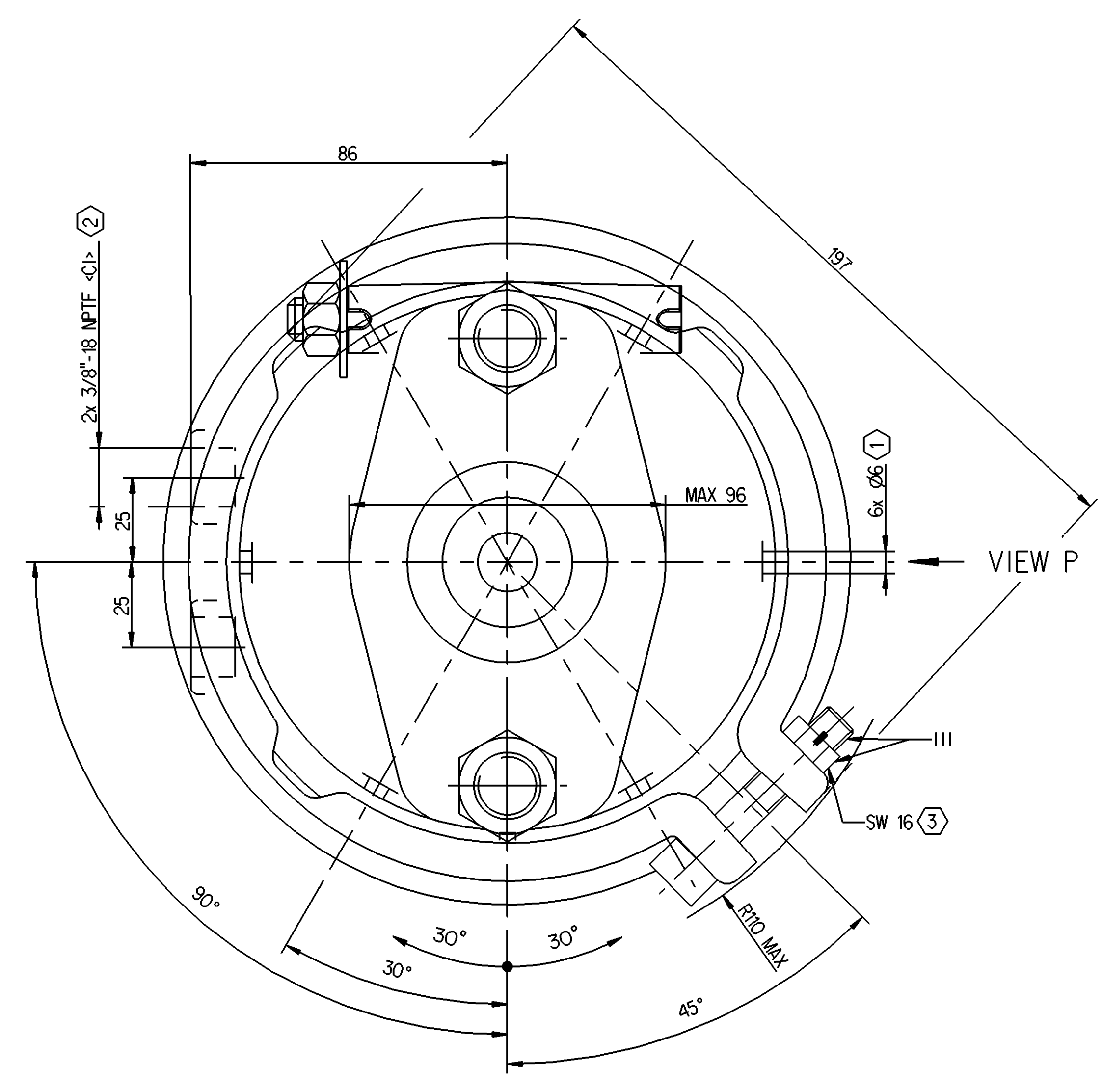
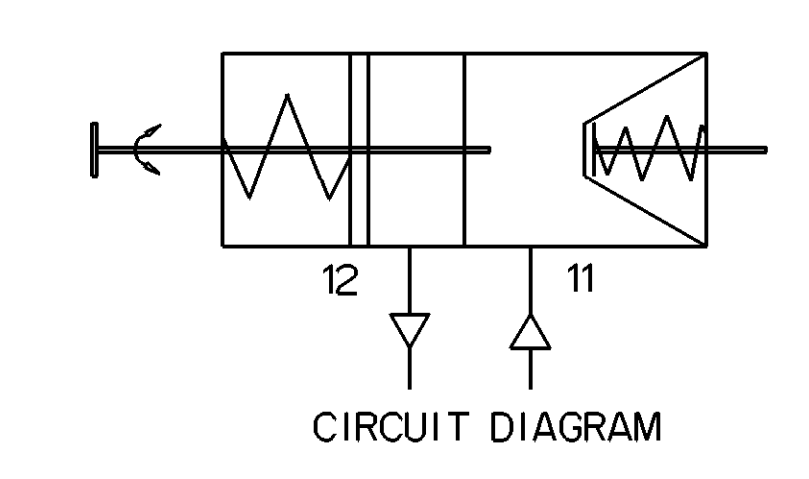
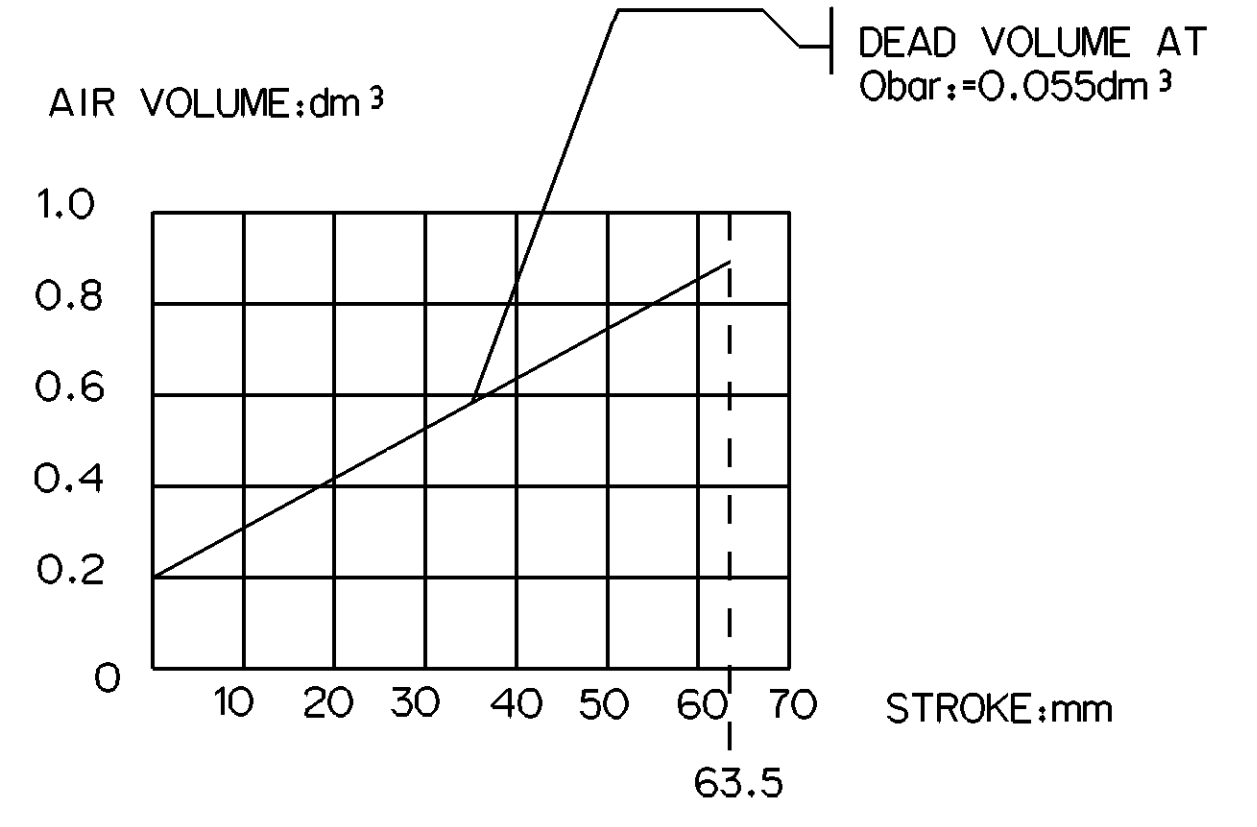
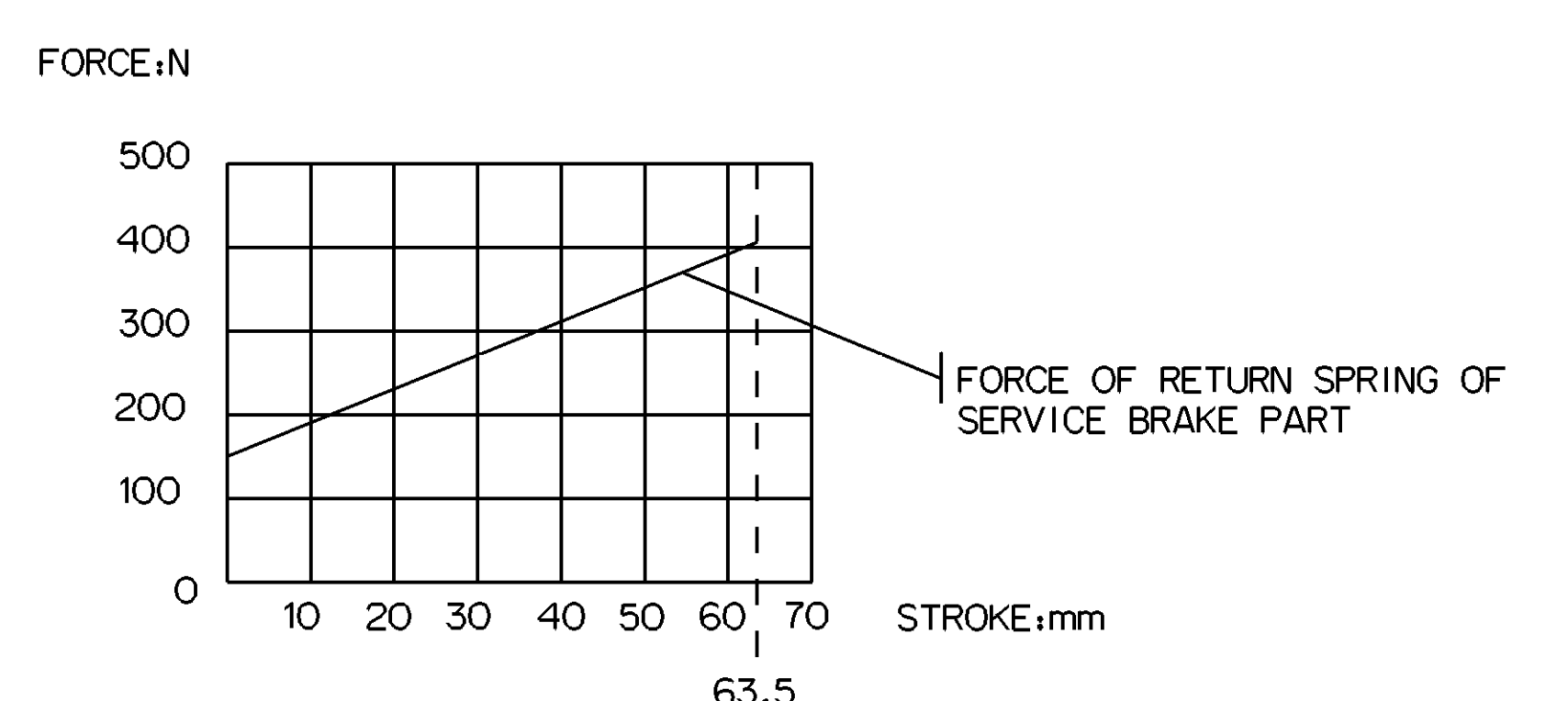
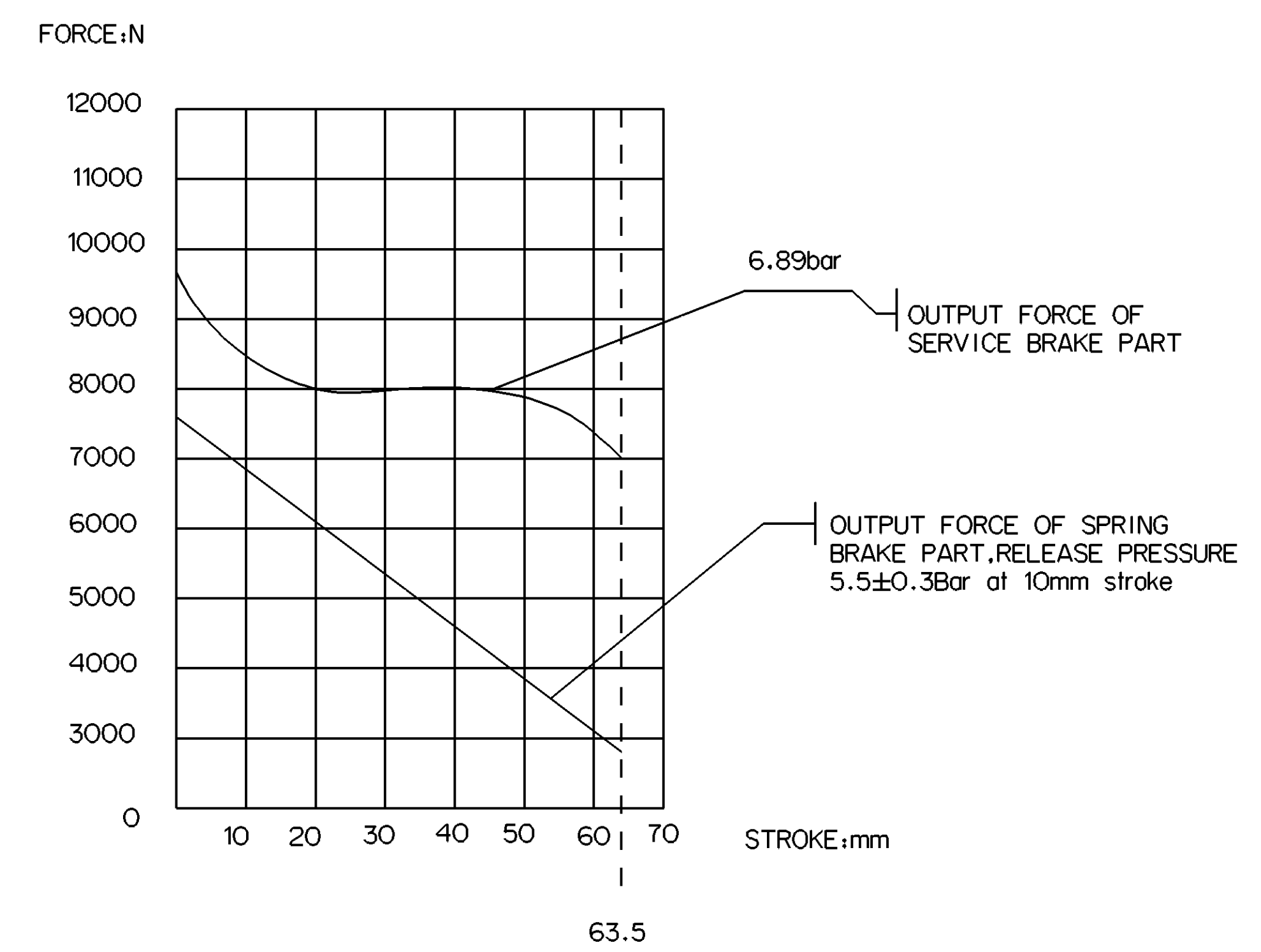


SAFETY CHARACTERISTICS	0
SIGNIFICANT CHARACTERISTICS	0
CUSTOMER INTERFACE	4

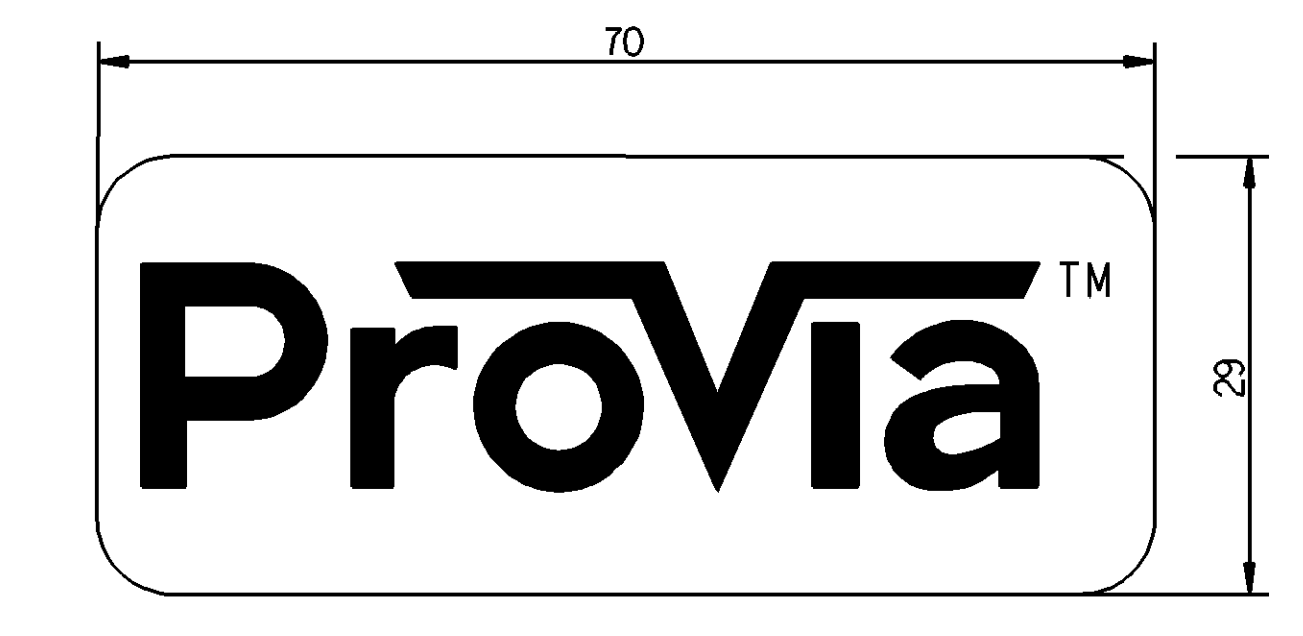
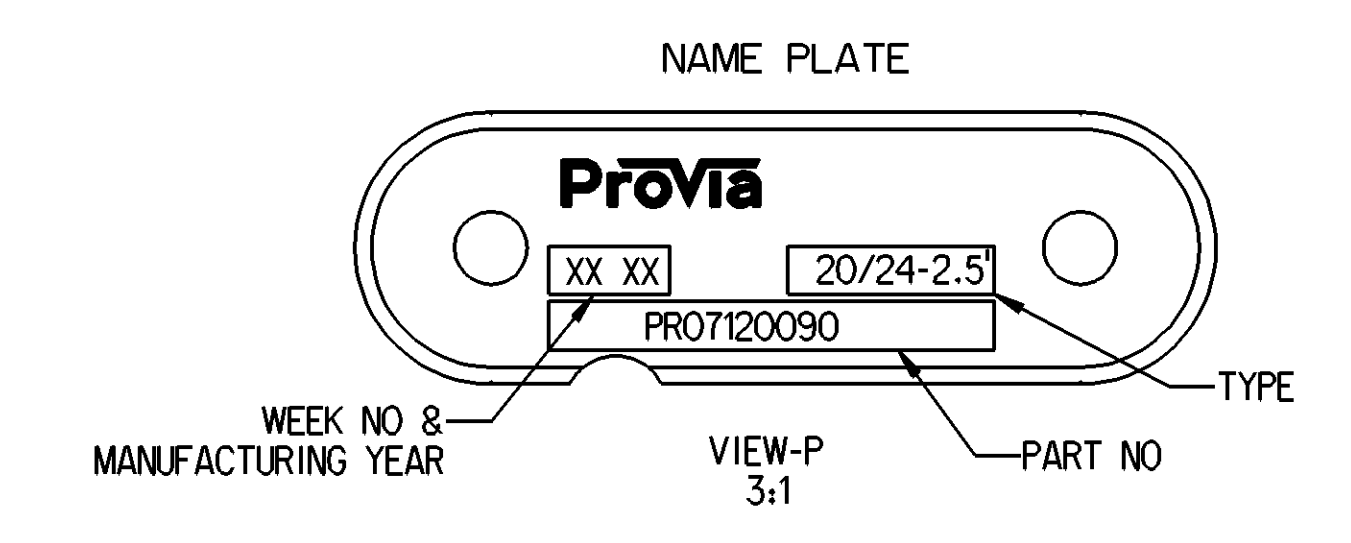
SURFACE PROTECTION	
I	ZINC PLATED WITH CR6+ FREE
II	ELECTRO-PAINTING
III	DACROMET
IV	HARD POLYETHYLENE
V	RUBBER
VI	STICKER



GRAPHS FOR INFORMATION ONLY



- TECHNICAL REQUIREMENT:
- STROKE:
PARKING CHAMBER: ≥ 63.5mm
SERVICE CHAMBER: ≥ 63.5mm
 - WORKING PRESSURE:
SERVICE CHAMBER Pmax: 10.5 Bar, TEMPORARILY 13 Bar
PARKING CHAMBER Pmax: 8.5 Bar, TEMPORARILY 10 Bar
 - WORKING TEMPERATURE: -40°C.....+80°C
 - THE DRAWING IS AT CAGED CONDITION, THE PARKING CHAMBER WILL BE AT UNCAGED CONDITION DURING SHIPMENT
 - WORKING MEDIUM: AIR
 - THIS PRODUCT MEETS THE REQUIREMENT OF QC/T 790 STANDARD



- OPEN BREATHER HOLE
- TORQUE: 34Nm MAX
- TORQUE: 35-40Nm
- TORQUE: 220±20 Nm
- ADMISSIBLE INSTALLATION POSITION
- TORQUE: MAX.25Nm
- DEFLECTION: 6° MAX AT STROKE 0mm

General Specification: ISO 8768, JIS-B 504-1, Size (S) 14105 LP		Copyright: 2023-04-27		ProVia	
Further Technical Data: PRO 712 006 0		Date: 2023-04-27		Systera	
Doc. Code: 035		Sheet: 1		To: 14	
General Tolerance: ISO 2013		2023-04-27		Sarovaran	
Range of Nominal Dimensions (a mm)		2023-04-28		Manivaran	
Class: 11		11		PRO 712 009 0	
File: 7.5		7.5		005 EN 1/1	
Medium: X		X		EN 1/1	
Course: 2		2		EN 1/1	
Tapped holes acc.:		A 0		EN 1/1	
Tolerance class: 0.05mm		A 0		EN 1/1	