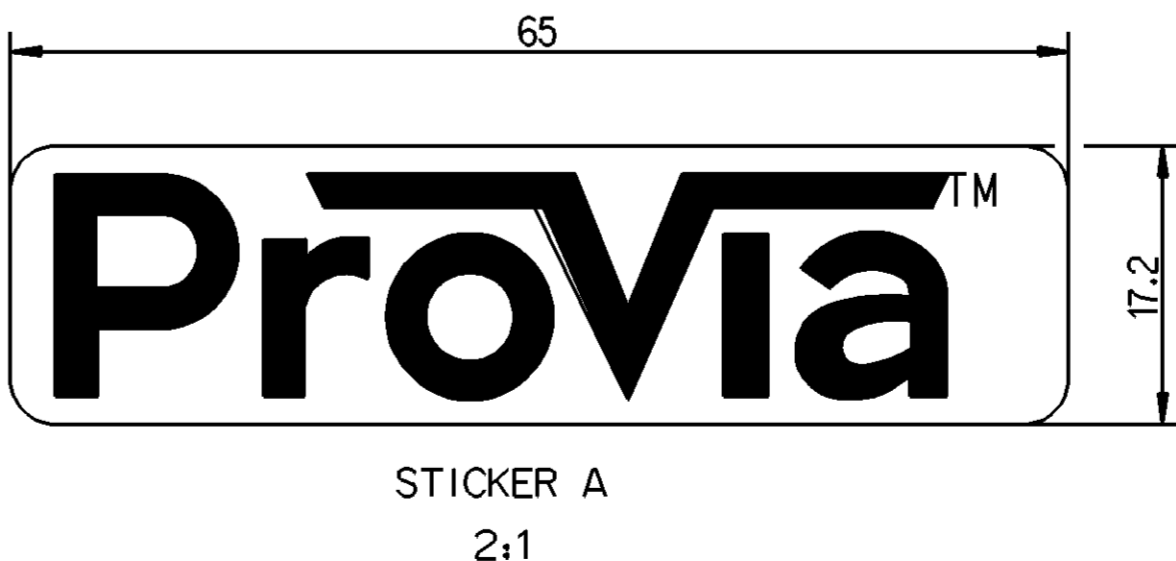
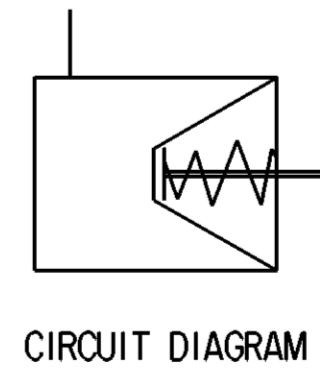
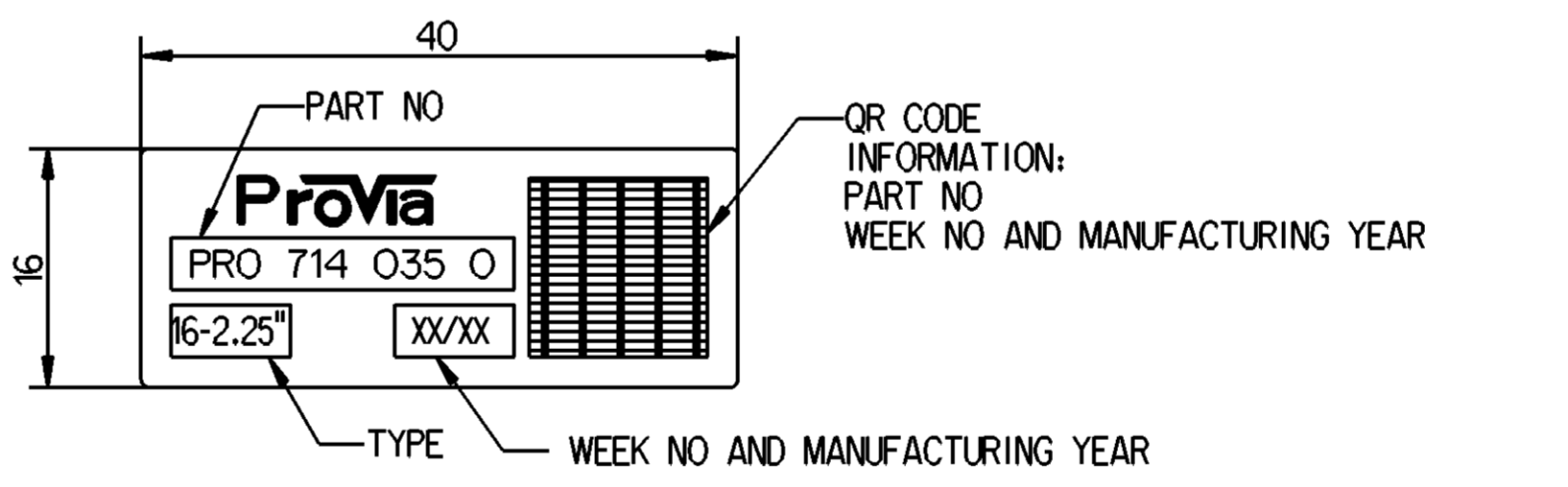
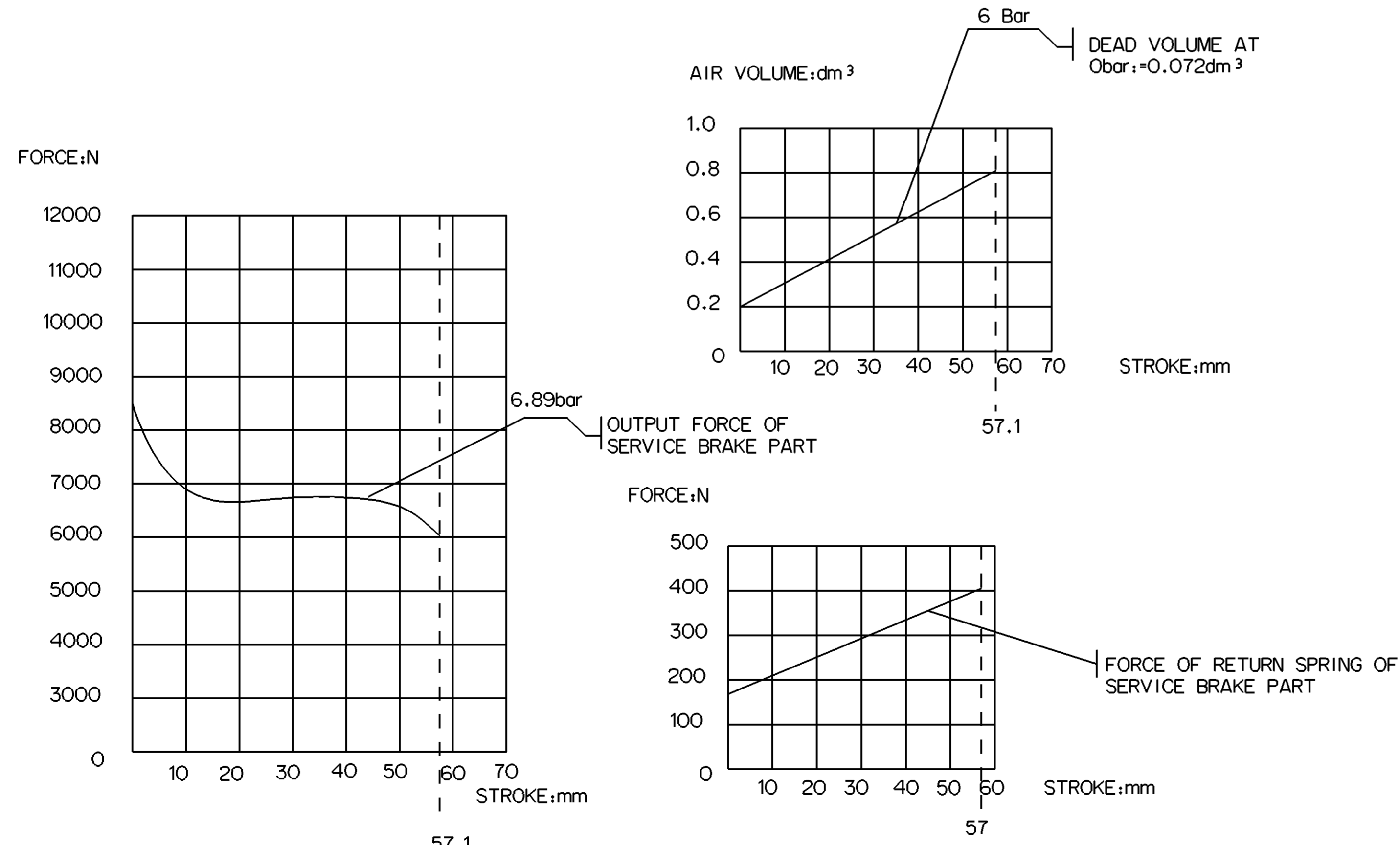


GRAPHS FOR INFORMATION ONLY



General Specifications: ISO 8015, JED-334-1, Size ISO H405 LP		Copyright WABCO®		
Further Technical Data: PRO 714 033 0		Date	Signature	
Doc. Code: 035	Sheet: 1 To 10	2023-04-27	Kariya	
General Tolerances JED-261		Checked		
Range of Nominal Dimensions (± mm)		2023-04-27 Subbich		
Class	1) ≤ 50	2) $50 > 180$	3) $180 \leq 400$	4) > 400
Fine	± 0.5	± 1	± 1.5	± 2
Medium	± 1	± 2	± 3	± 4
Coarse	± 2	± 3.5	± 5	± 6.5
Tapped Holes acc. -		Dimensions in mm		
Mass	3.3 kg	Scale	1:1 (2:1)	
Size	A 1	CAD System	CREO	
Material No.		Date of first issue	2023-04-27	
PRO 714 035 0		Doc. Code	005	
Language		EN	1/1	
Tech. Resp.		Replacement for		
5350_AM				

Non è permesso copiare o riprodurre questo documento, né utilizzare il contenuto o riprodurre immagini o testi. È vietata espressamente la ristampa o l'uso non autorizzato. Tutti i diritti sono riservati. © 2023 WABCO.

Toute réimpression ou reproduction de ce document, sans autorisation écrite préalable, est formellement interdite. Toute utilisation non autorisée des informations contenues dans ce document est formellement interdite. Tous droits réservés. © 2023 WABCO.

Wollungen sowie Vervielfältigung dieses Unterzuges, Verwertung und Mitteilung desselben sind ausdrücklich untersagt. Alle Rechte sind vorbehalten. © 2023 WABCO.