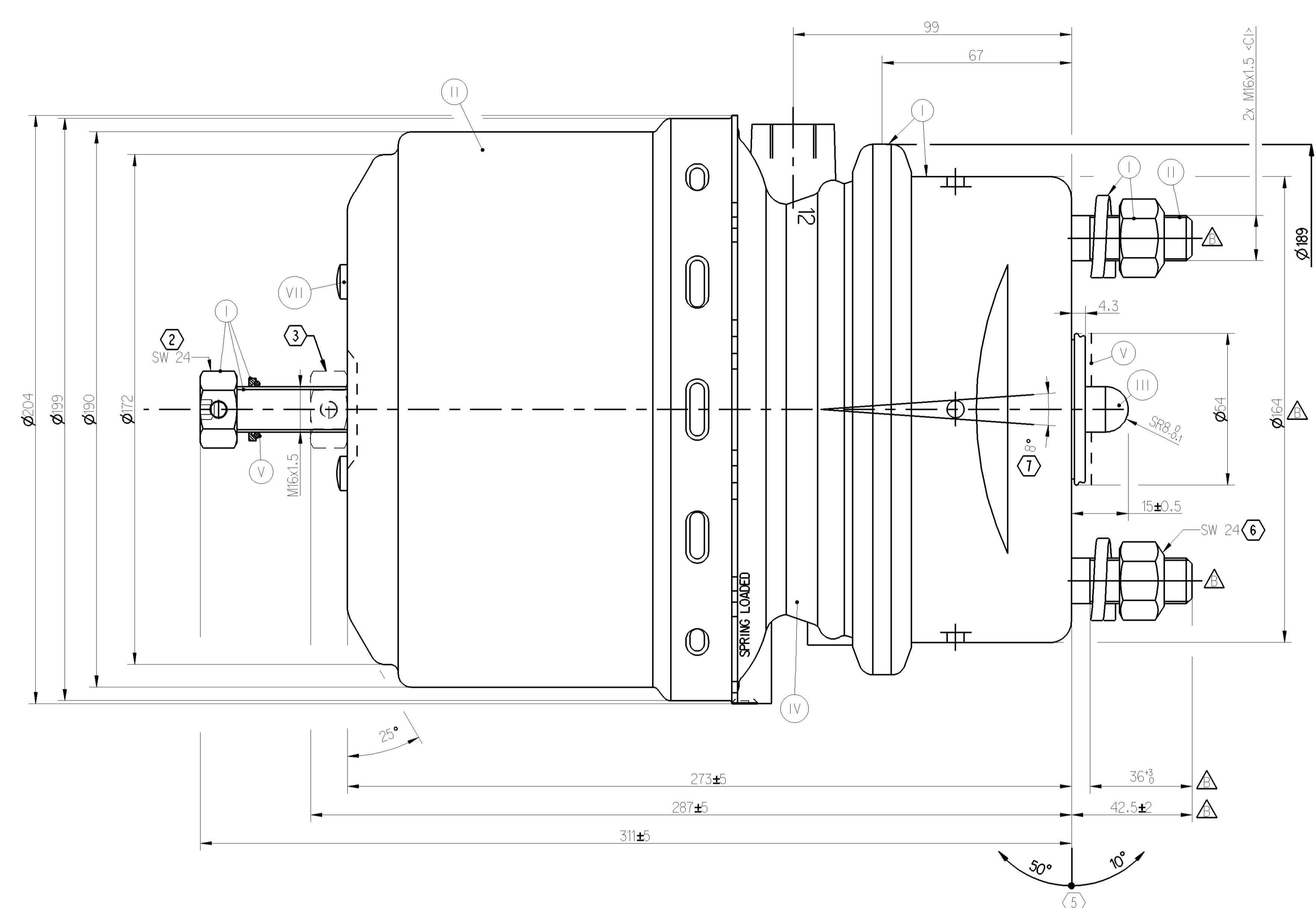
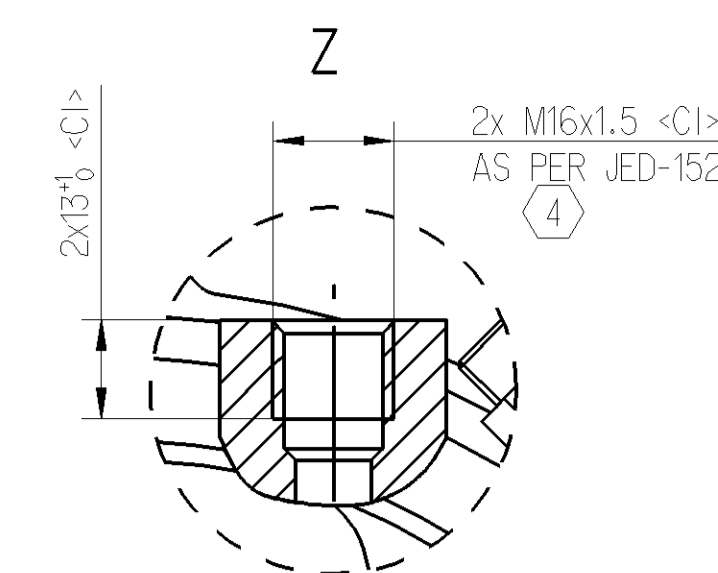
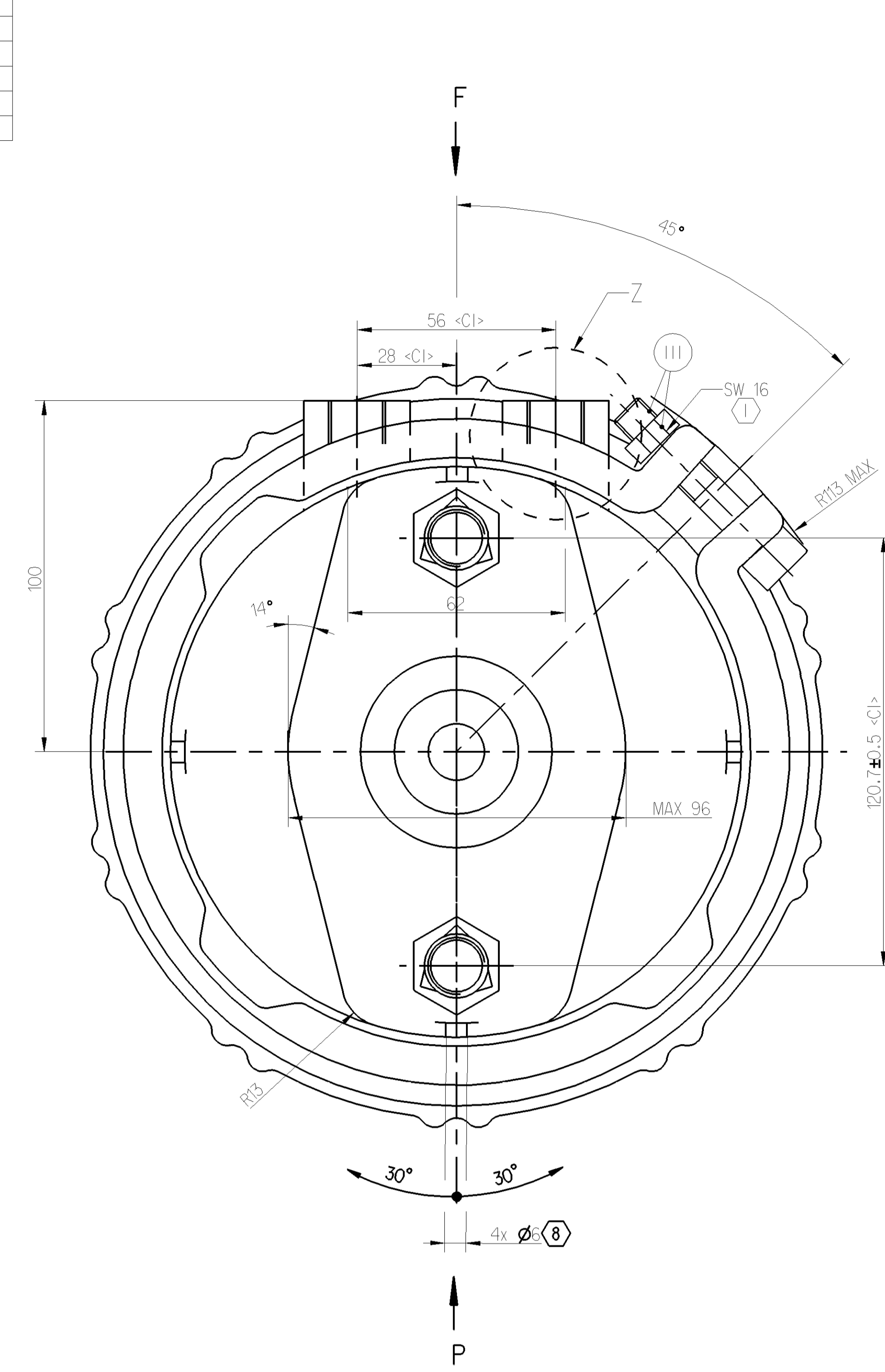
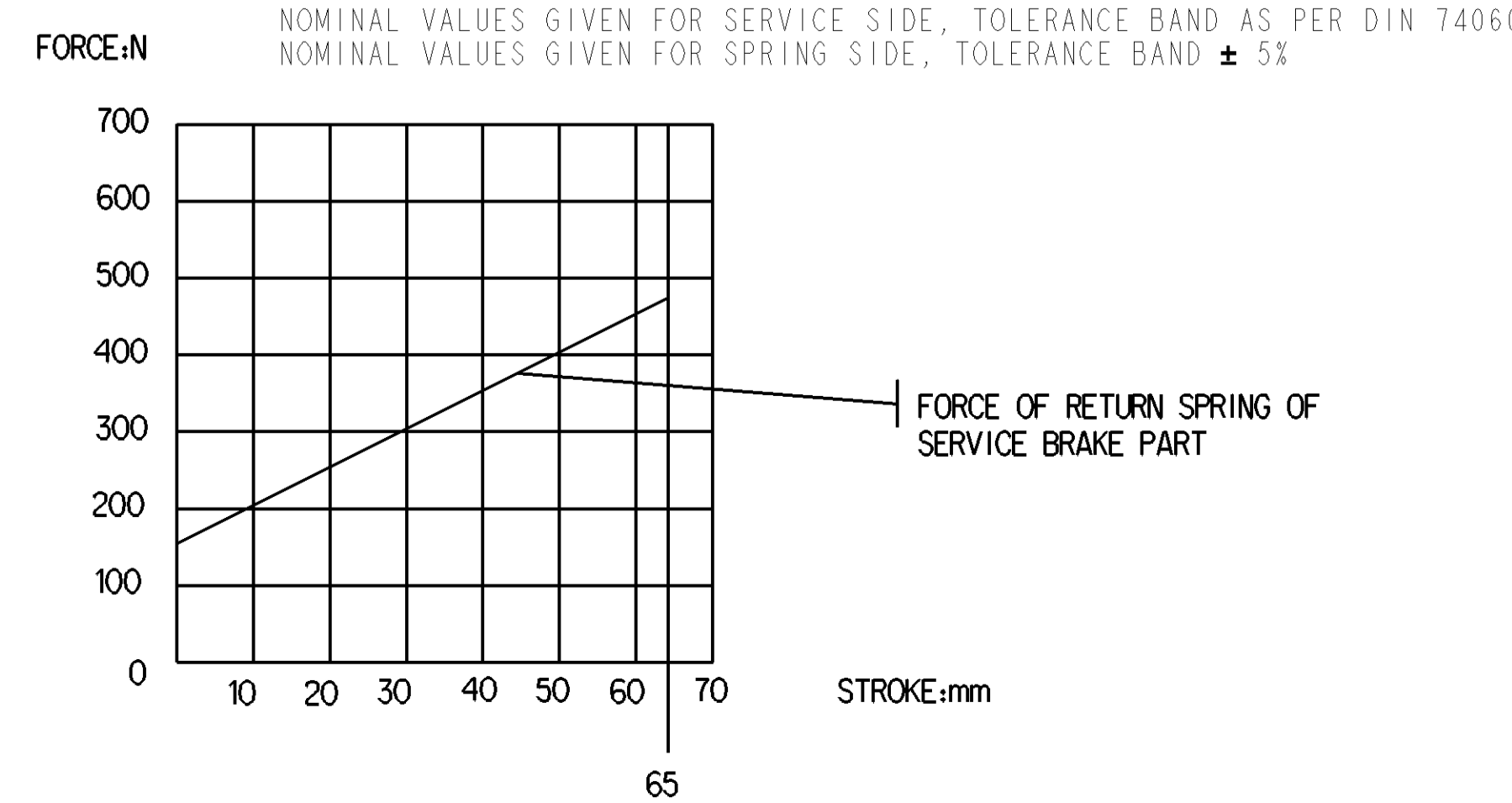
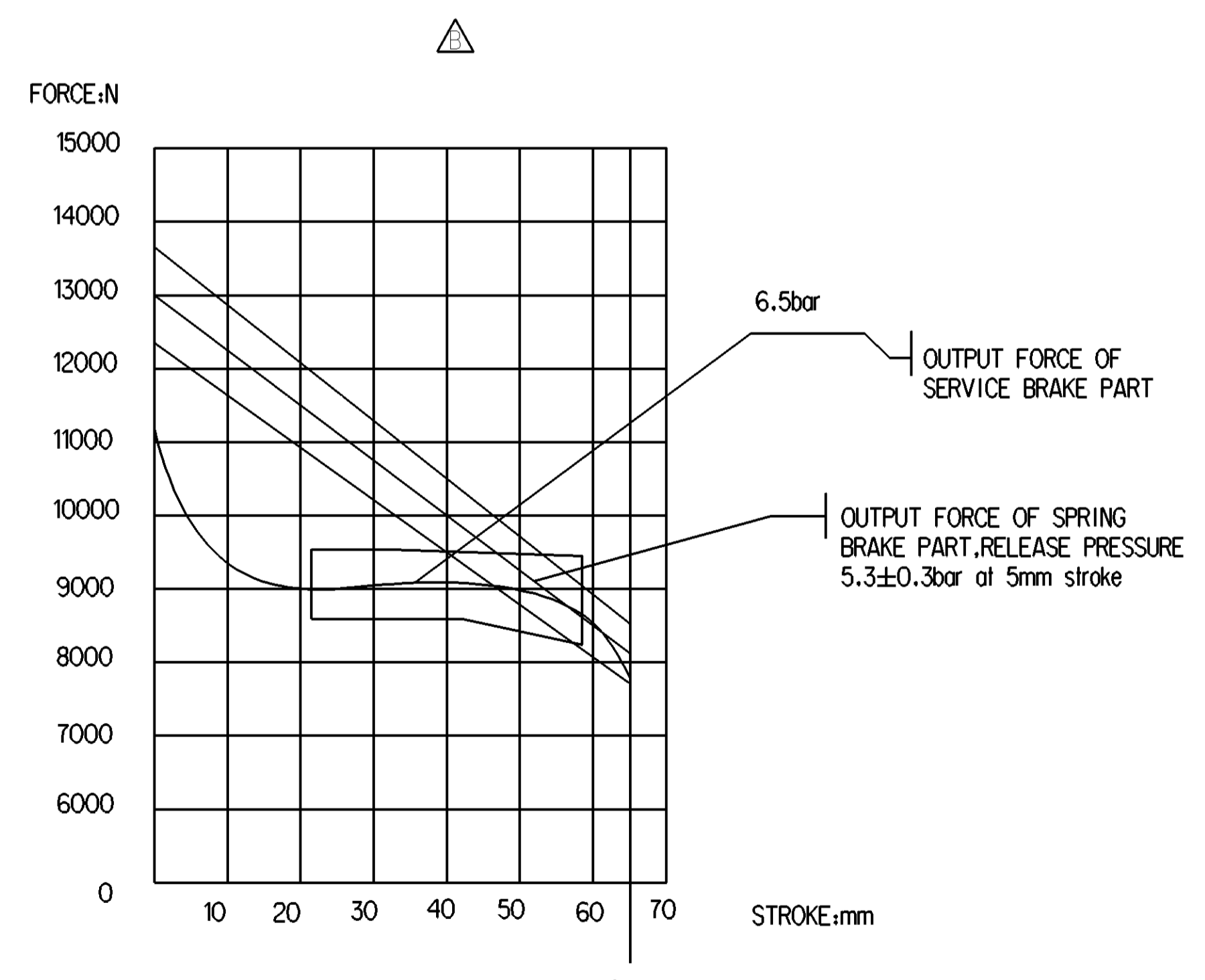


SURFACE PROTECTION	
I	ZINC PLATED WITH CR6+ FREE
II	ELECTRO-PAINTING
III	DACROMET
IV	SURFACE OXIDIZATION
V	RUBBER
VI	STICKERS
VII	BLACKENING

SAFETY CHARACTERISTICS	0
SIGNIFICANT CHARACTERISTICS	0
CUSTOMER INTERFACE	6

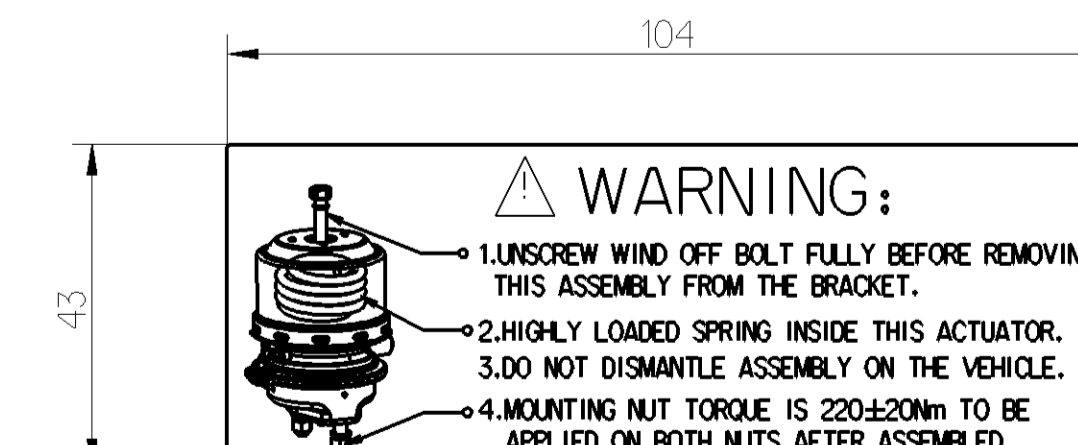


GRAPHS FOR INFORMATION ONLY

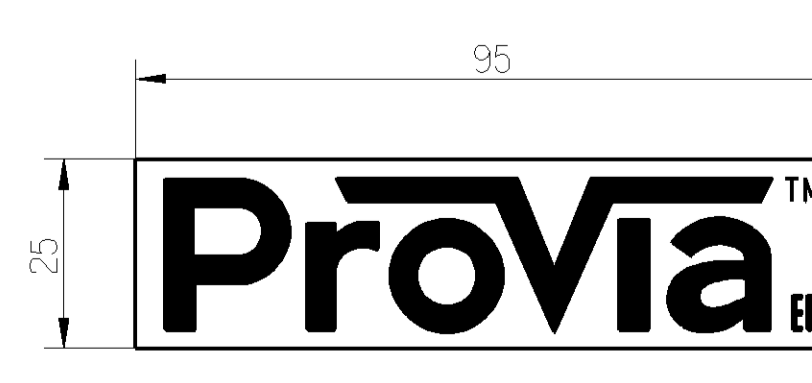


- ① TORQUE: ≥ 35 Nm
- ② RELEASE POSITION, RELEASING WITH: 80 Nm MAX.
- ③ DRIVING POSITION, TIGHTENING WITH: 25 ± 3 Nm
- ④ TORQUE: MAX. 34 Nm
- ⑤ ADMISSIBLE INSTALLATION POSITION
- ⑥ TORQUE: 210 ± 30 Nm
- ⑦ DEFLECTION: 8° MAX AT STROKE: 0 mm
- ⑧ TO BE INSTALLED WITH LOWER BREATHER HOLE OPEN

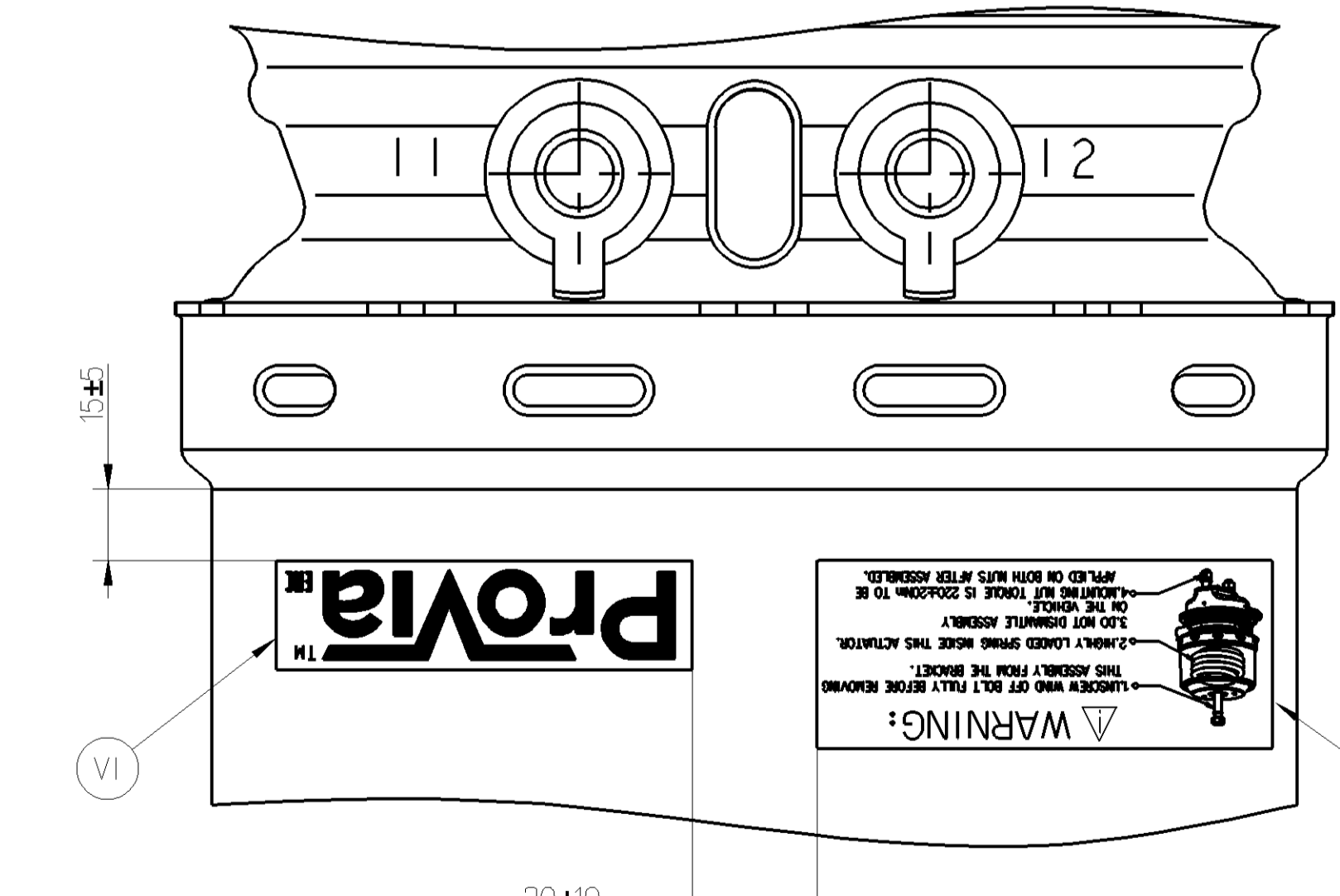
- TECHNICAL REQUIREMENT:
- STROKE:
SERVICE BRAKE: ≥ 65 mm
SPRING BRAKE: ≥ 65 mm
 - WORKING PRESSURE:
SERVICE CHAMBER: Pmax 10.2 bar, TEMPORARILY 13 bar;
PARKING CHAMBER: Pmax 8.5 bar, TEMPORARILY 11 bar.
 - WORKING TEMPERATURE: -40°C...+80°C (-40°F...+176°F)
 - THE DRAWING IS AT CAGED CONDITION, THE PARKING CHAMBER WILL BE AT UNCAGED CONDITION DURING SHIPMENT.
 - WORKING MEDIUM: AIR.



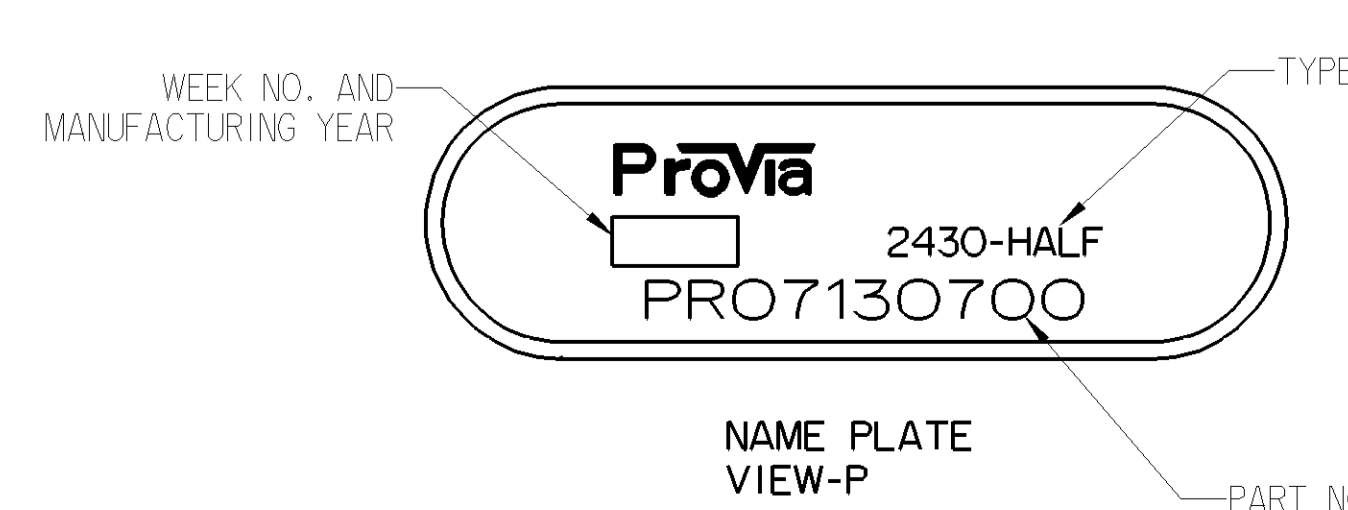
STICKER A



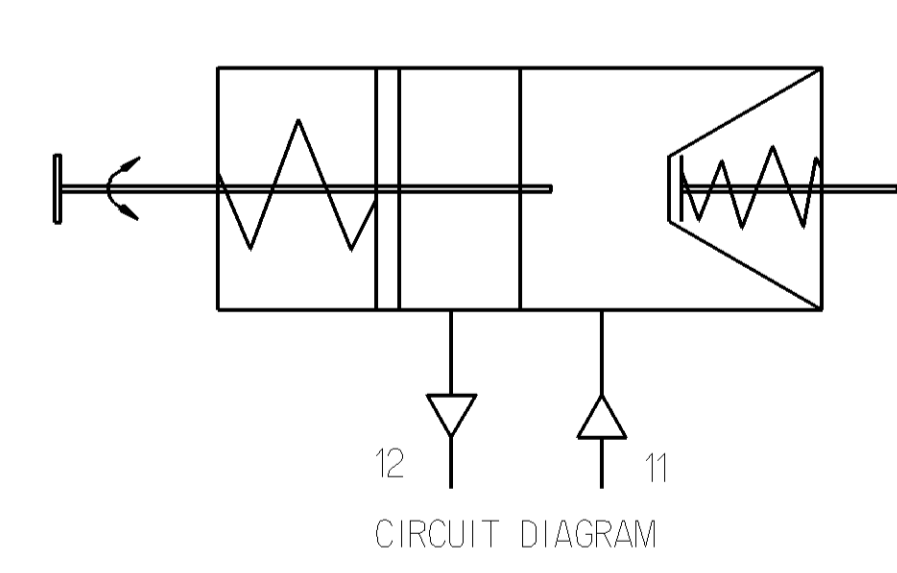
STICKER B



VIEW F



NAME PLATE VIEW-P



CIRCUIT DIAGRAM

General Specifications		Drawing		Revision	
Doc. Code: 030	Sheet: 1 To 6	Date: 2023-10-19	Drawn: Varghesh	Doc. Code: Language:	005 EN
Range of Nominal Dimensions (a mm)		Checked: Manivannan		Date of first issue: 2023-03-17	
Class	11	12	13	14	15
11	12	13	14	15	16
17	18	19	20	21	22
23	24	25	26	27	28
29	30	31	32	33	34
35	36	37	38	39	40
41	42	43	44	45	46
47	48	49	50	51	52
53	54	55	56	57	58
59	60	61	62	63	64
65	66	67	68	69	70
71	72	73	74	75	76
77	78	79	80	81	82
83	84	85	86	87	88
89	90	91	92	93	94
95	96	97	98	99	100