

DRAFT FOR TEXT AREAS EXPLANATION ONLY. DRAFT CAN BE DIFFERENT TO THE REAL PART.

IDENTIFICATION	DESIGNATION	KIND OF MARKING	COLOUR	SIZE OF TYPES RESP. STANDARD	REMARKS
e	PROVIA - LOGO	TAMPON / UV-BRANDING	WHITE	SIZE 6	
f	PROVIA - SET NUMBER	TAMPON / UV-BRANDING	WHITE		
g	PROVIA - SALES REFERENCE, US-CODE (WHEN EXIST)	TAMPON / UV-BRANDING	WHITE		
h	NUMBER OF WVA	TAMPON / UV-BRANDING	WHITE	HEIGHT OF CHARACTERS 5±1MM HEIGHT OF CHARACTERS AND POSITION OF THE MARKING MAY BE ACC. TO THE SHAPE OF THE BACKING PLATE	
j	NUMBER OF ECE	TAMPON / UV-BRANDING	WHITE		
k	COUNTRY OF ORIGIN	TAMPON / UV-BRANDING	WHITE		
l	BATCH NUMBER	TAMPON / UV-BRANDING	WHITE		
m	ENVIRONMENTAL MARKING ACC. TO SAE J866 JUL2012 OR LATEST	TAMPON / UV-BRANDING	WHITE		

- (A) MAX. 10% LACQUER PERMITTED, WITHOUT MOULD SKIN. (ACC. TO FINISHING CODE)
- (B) FIRMLY ATTACHED BURR AROUND PAD CONTOUR PERMITTED, MUST NOT PROTRUDE BEYOND BACKING PLATE

General Specification: JED-334-1 - Size ISO 14405 LP		Copyright WABCO®	
Further Technical Data: Part Specification		Date: 2018-12-18	Signature: [Blank]
Doc. Code: 016	Sheet: 1 To: 1	Drawn: [Blank]	Checked: [Blank]
General Tolerances JED-261		2018-12-18	
Range of Nominal Dimensions (± mm)		Marcinkiewicz	
		Expert	
		Material No.	
Class 1)	≤ 50	> 50 < 180	> 180 < 400
Fine	0.5	1.0	1.5
Medium	1.0	2.0	3.0
Coarse	2.0	3.5	5.0
Tapped Holes acc. -		11) Tolerance Class Applied Crossmarked	

Mass	7.6 kg	Scale	1:1 (2:1)	Date of first issue:	2018-03-26
Size	CAD System	Material No.	340 225 000 2	Doc. Code	005
		Revision	3 x D	Language	EN
		Techn. Resp.	0969	Sheet	1/2

POS.	NAME	QUANTITY
1	BRAKE PAD	4

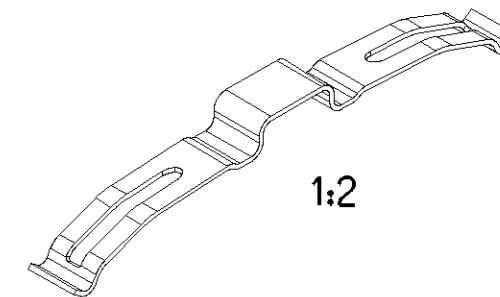
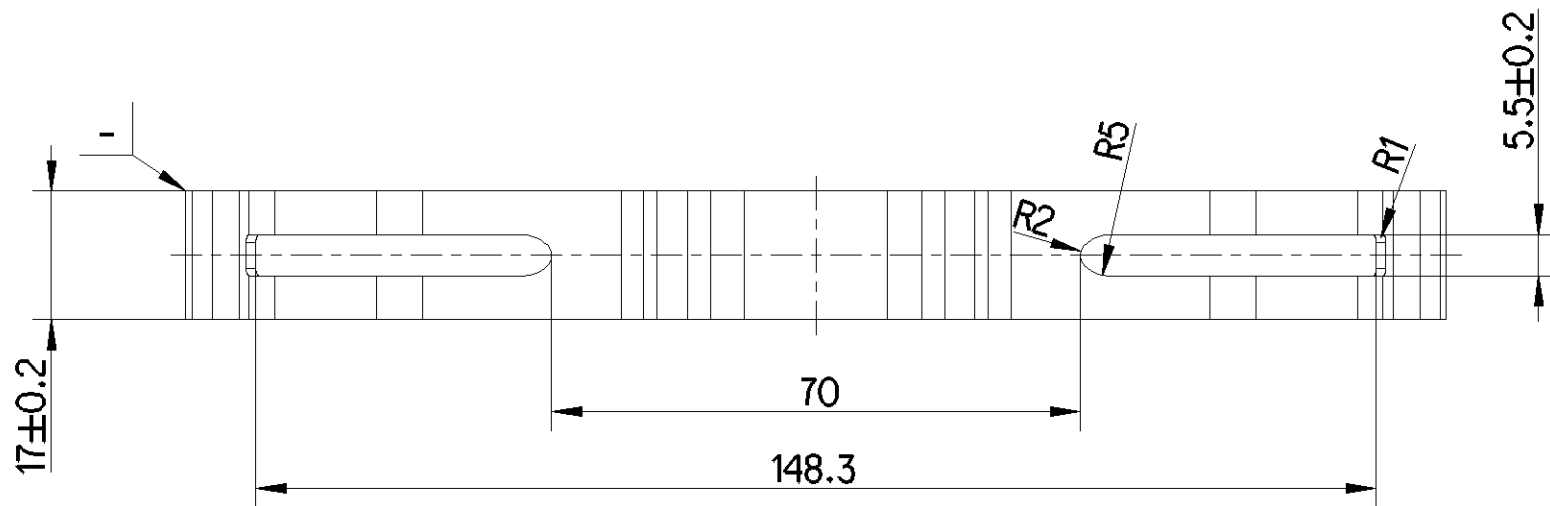
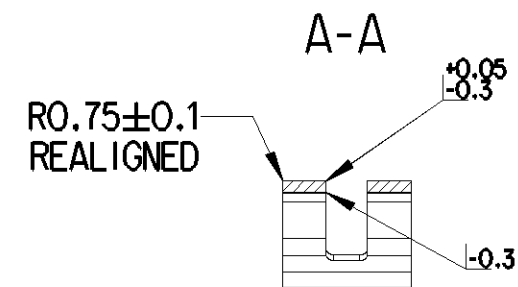
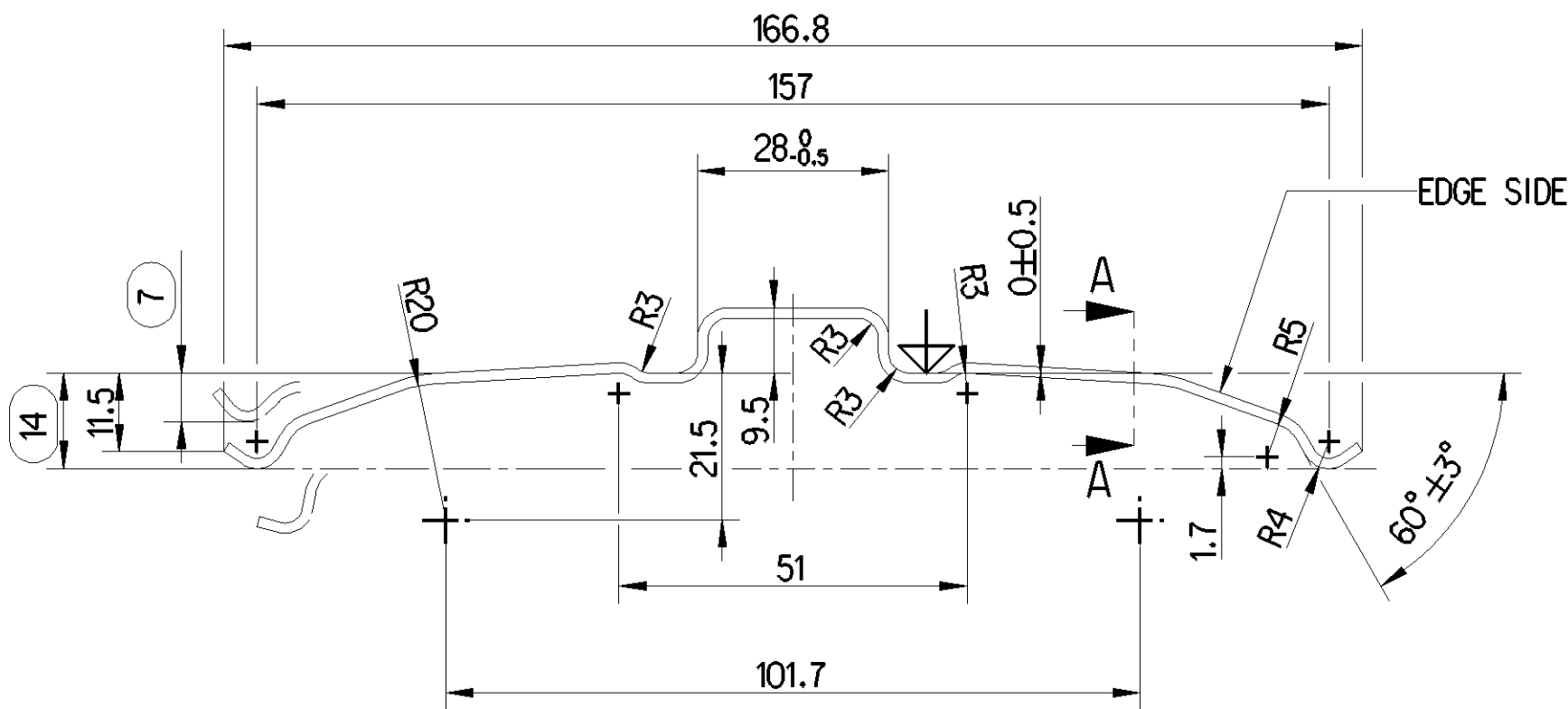
Non e permesso copiare o riprodurre questo documento, ne utilizzare il contenuto a fini commerciali, senza permesso scritto dalla WABCO. E' vietata espressamente la ristampa o l'uso non autorizzato di questo documento. Toute reproduction ou utilisation non autorise sans la permission écrite de la WABCO est formellement interdite. Toute utilisation non autorisée sera considérée comme étant illicite.

Non e permesso consegnare a terzi o riprodurre questo documento, ne utilizzare il contenuto o renderlo comunque noto a terzi senza autorizzazione esplicita. Ogni infrazione costituira un evidente abuso e comportera il risarcimento dei danni subiti. E' fatto riserva di tutti i diritti derivanti da brevetti o modelli.

Copying of this document and giving it to others and the use or communication of the contents thereof, are forbidden without express authority. Controvention of this restriction will constitute an evident abuse and result in a liability to the payment of damages. All rights are reserved in the event of the grant of patent or registration of a utility model or design. This document is the subject of copyright.

Toute communication ou reproduction de ce document, toute exploitation ou communication de son contenu sont interdites, sauf autorisation expresse. Tout manquement a cette regle constitue un abus evident et expose son auteur au versement de dommages et interets. Tous droits de propriete industrielle reserves, notamment en matiere de brevets et de modesles.

Weitergabe sowie Vervielfaeligung dieser Unterlage, Verwertung und Mitteilung ihres Inhalts nicht gestattet, soweit nicht ausdruendlich zugestanden. Zuwiderhandlungen stellen einen offensichtlichlichen Misbrauch dar und verpflichten zu Schadenersatz. Alle Rechte fuer den Fall der Patenterteilung oder Gebrauchsmuster-Eintragung vorbehalten.



POS.	NAME	QUANTITY
1	LEAF SPRING PAN 22	6

General Specification: JED-334-1, Size ISO 14405 LP	
Further Technical Data: Part Specification	
Doc. Code: O16	Sheet: To
General Tolerances JED-261	
Range of Nominal Dimensions (± mm)	
Class 1)	≤ 50 > 50 ≤ 180 > 180 ≤ 400 > 400
Fine	0.5 1.0 1.5 2.0
Medium X	1.0 2.0 3.0 4.0
Coarse	2.0 3.5 5.0 6.5
Tapped Holes acc. -	
1) Tolerance Class Applied Crossmarked	

Copyright WABCO®	
Date	Signature
2018-12-18	Pokula
2018-12-18	Marcinkiewicz
Expert	
Marcinkiewicz	
Mass	Scale
0.5 KG	1:1 (1:2)
Size	CAD System
A 3	CREO

ProVia		
PAD KIT PAN 22		
Material No.	Date of first issue: 2015-03-26	
340 225 000 2	Doc.Code	Language
	005	EN
ECN-No.	Revision	Techn. Resp.
179317	3 x D	0959
Replacement for		
-		

