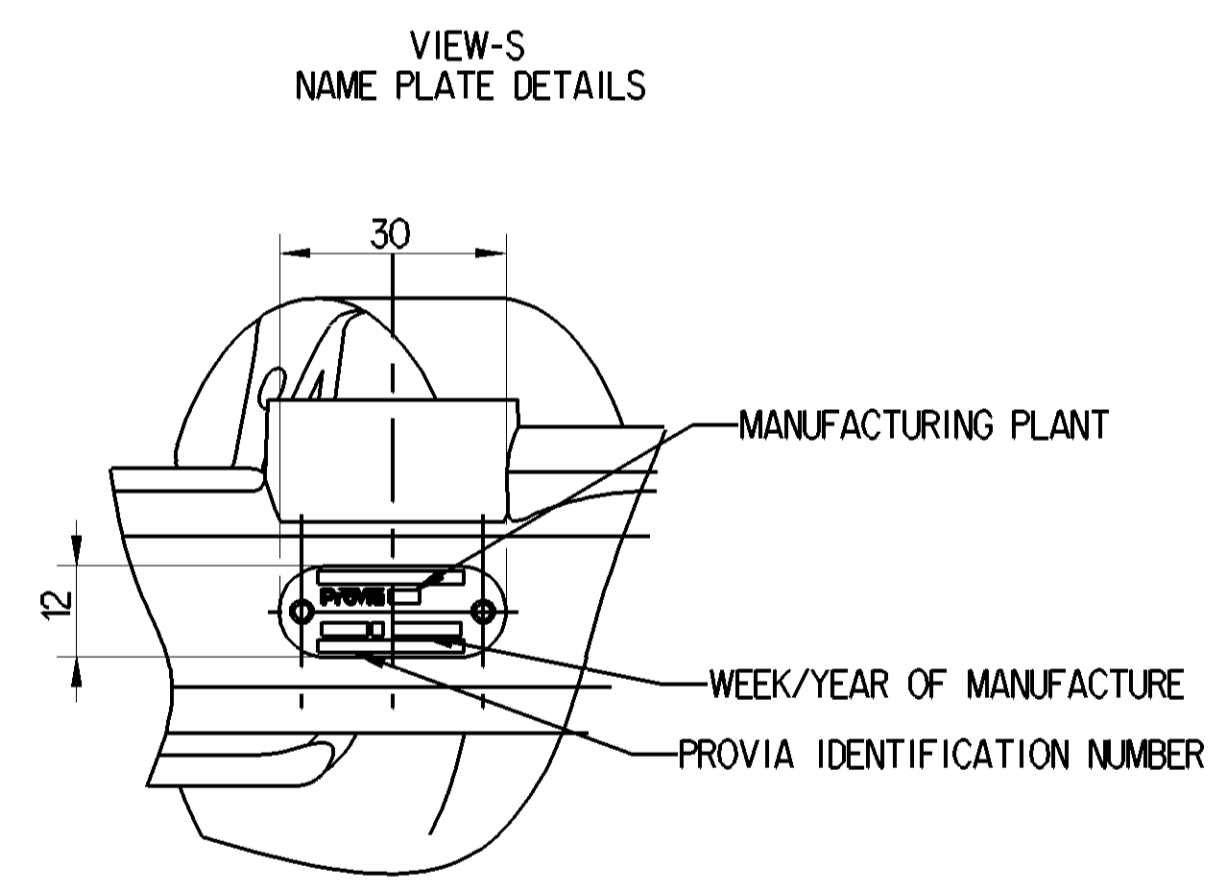
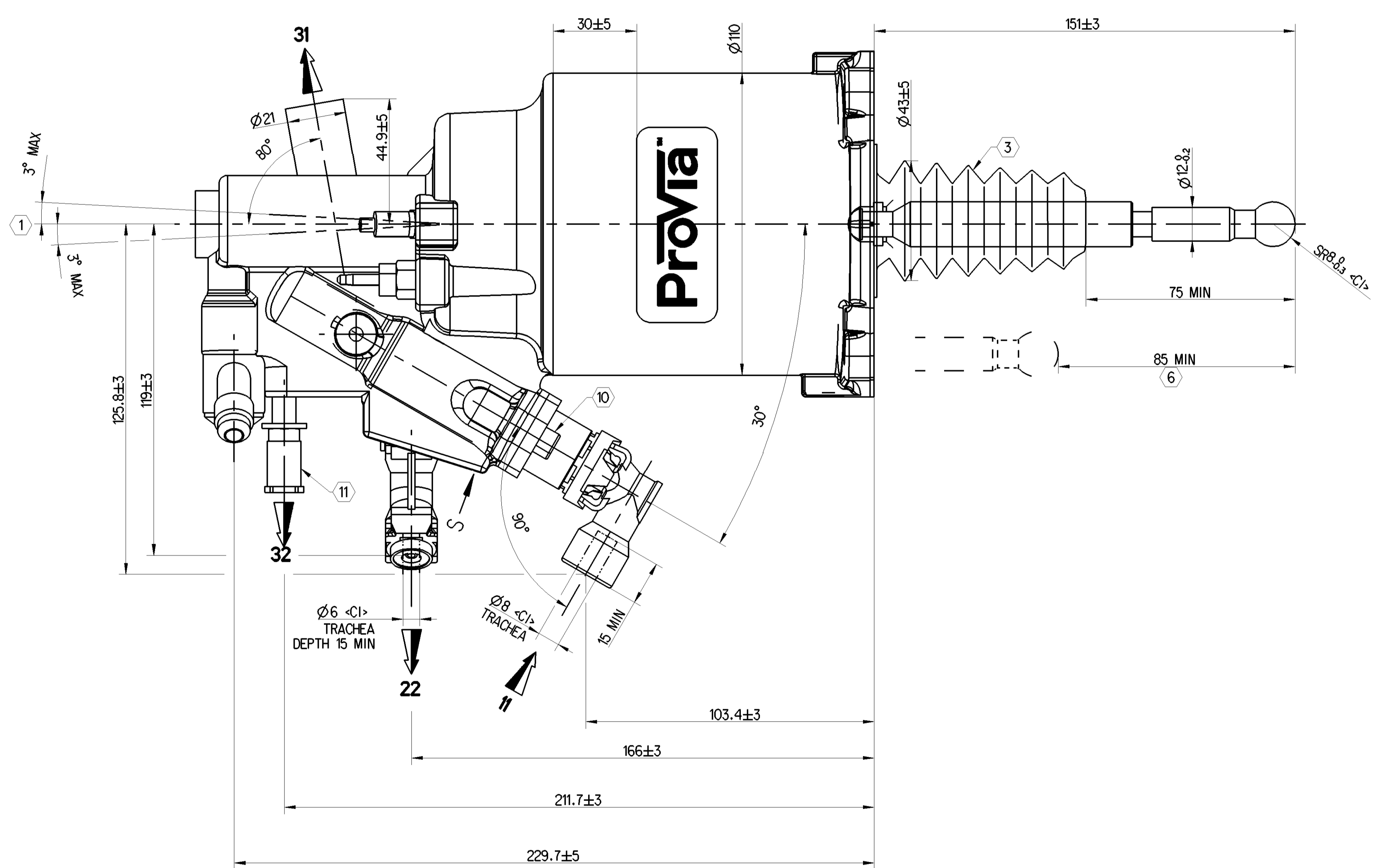
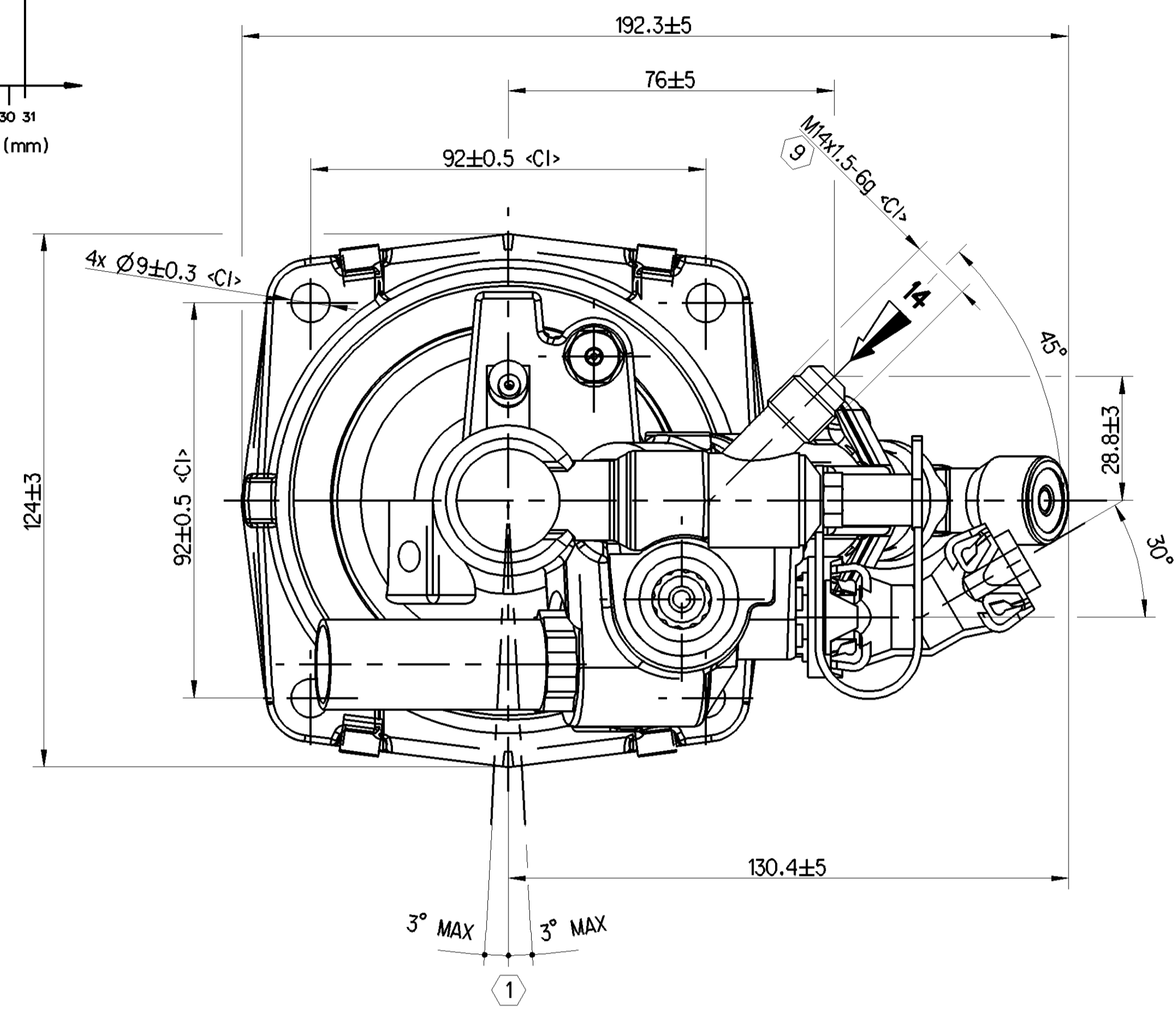
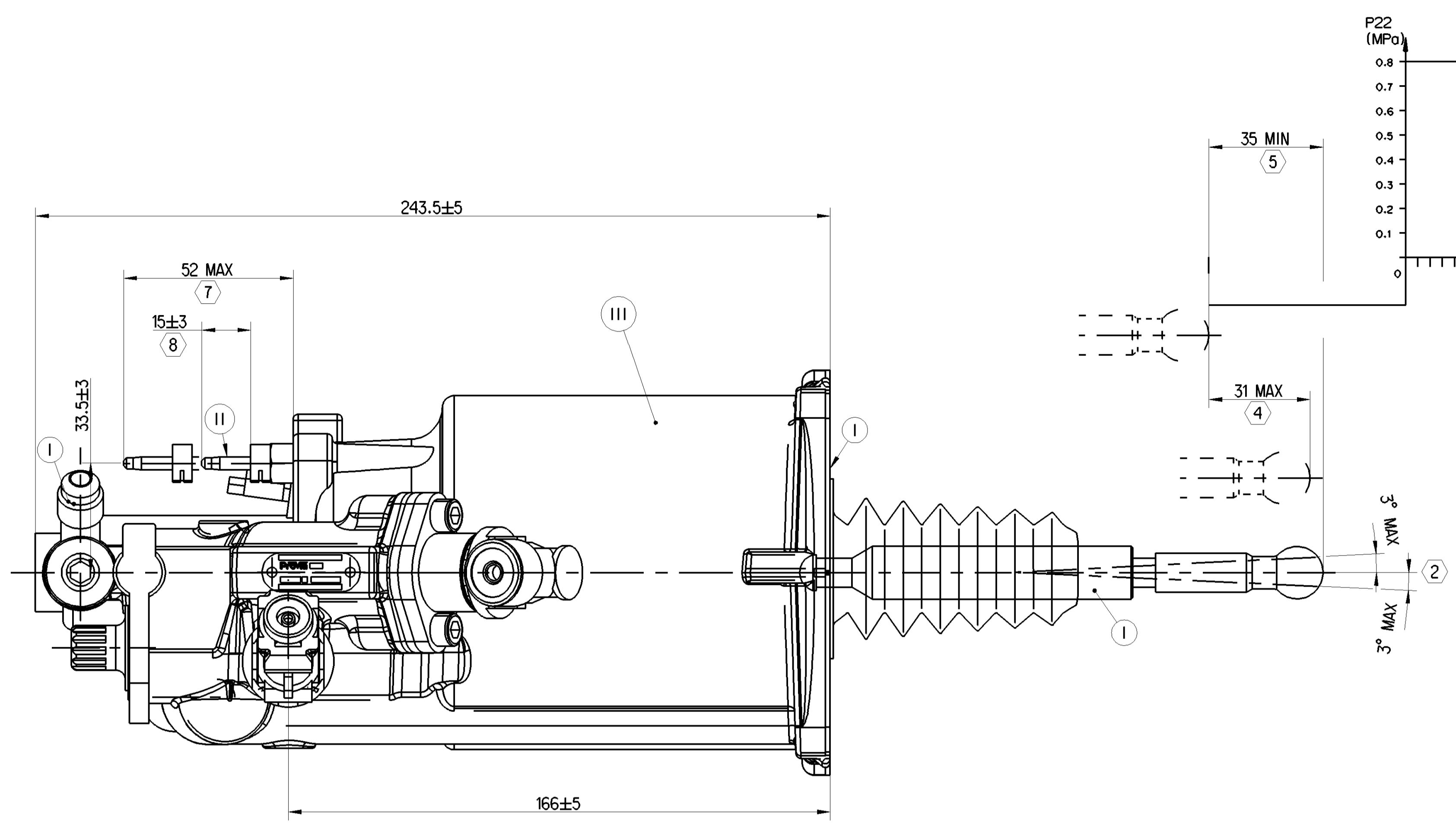


III	ALUMINIUM ALLOY	HARD ANODIZING
II	STEEL	SALT BATH (BLACK)
I	STEEL	GALVANIZED (WHITE)
POS	MATERIAL	SURFACE PROTECTION

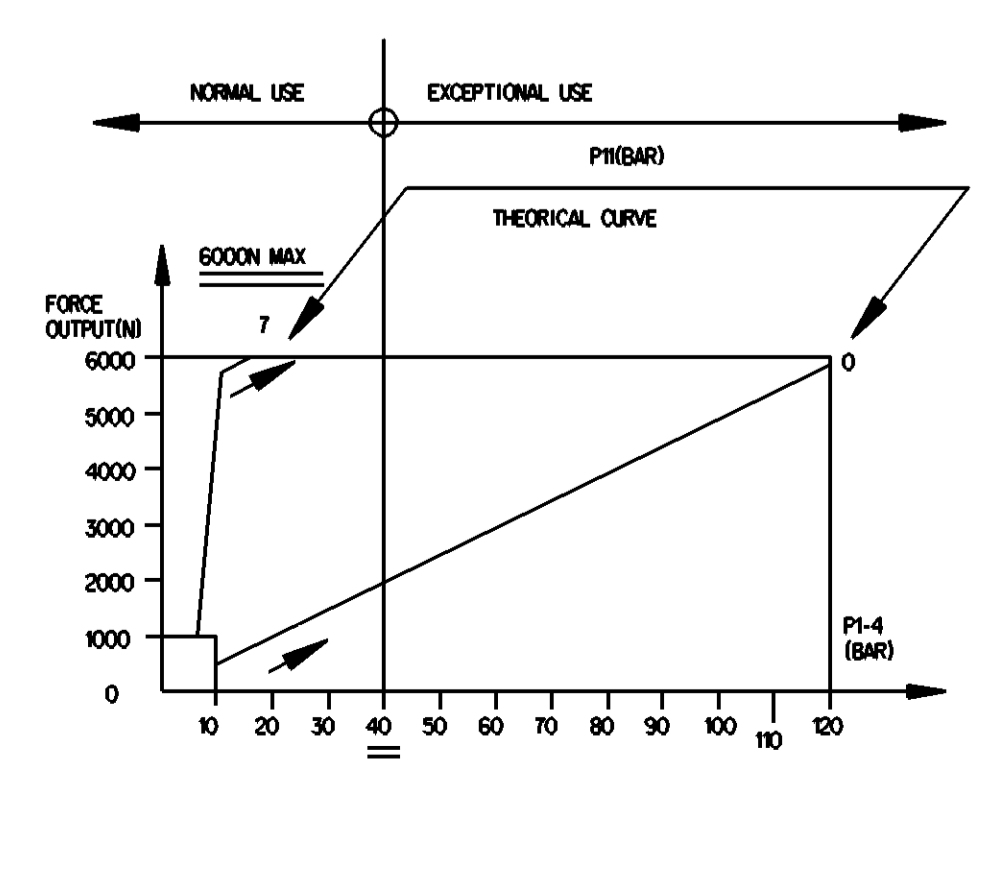
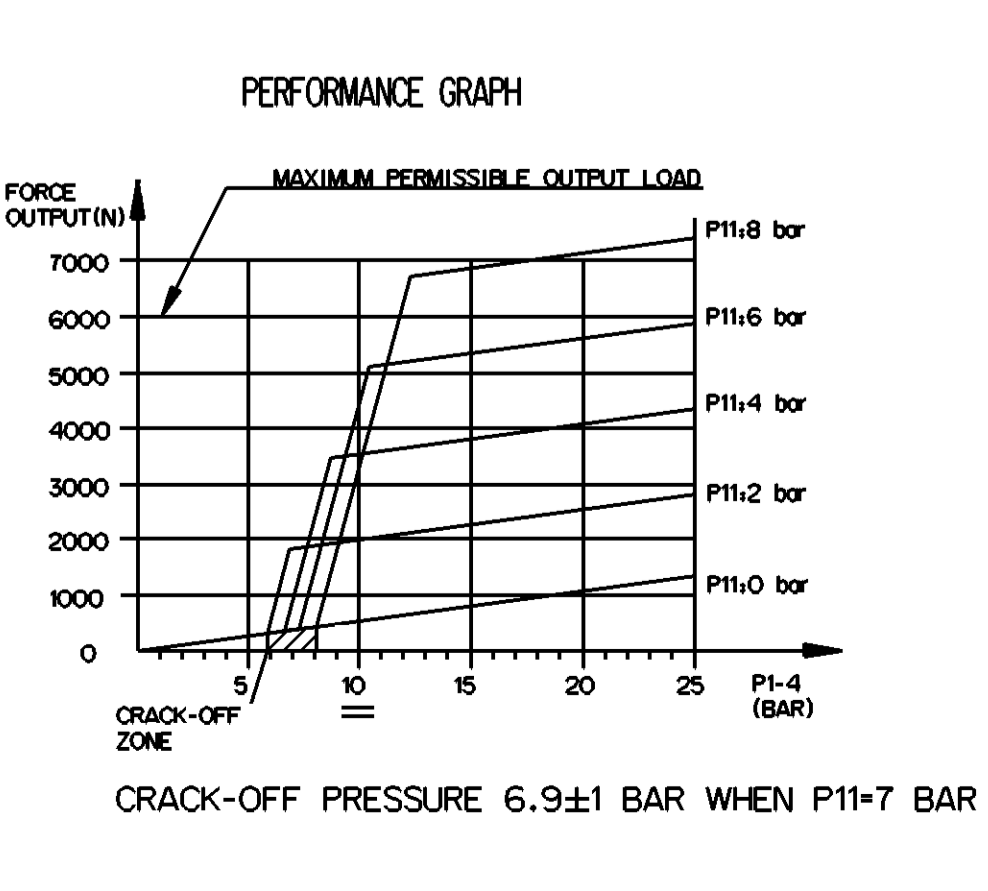
SAFETY CHARACTERISTICS	0
SIGNIFICANT CHARACTERISTICS	0
CUSTOMER INTERFACE	7

- TECHNICAL INFORMATION
- HYDRAULIC TANK DIA : $\varnothing 25mm$
 - AIR TANK DIA : $\varnothing 100mm$
 - HYDRAULIC WORKING PRESSURE 4MPa
 - HYDRAULIC WORKING PRESSURE MAX 12MPa
 - AIR WORKING PRESSURE MAX 1MPa
 - WORKING TEMPERATURE : $-40^{\circ}C$ TO $+80^{\circ}C$
 - MEDIUM
HYDRAULIC MEDIUM : DOT 4 BASED BRAKE FLUID IN ACCORDANCE WITH SAE J 1703
PNEUMATIC MEDIUM : AIR
 - OIL VOLUME INPUT : $V=(SH+C)K$
K : ABSORPTION AT 120 BAR FOR $C=0$, $K=1,5cm^3$
SH : HYDRAULIC SECTIONAL AREA = $4,9 cm^2$
C : GEAR DISENGAGING STROKE
 $V=(SH+C)K= 12,9 cm^3$
 - OPEN PORTS ARE FITTED WITH CLOSURE PLUG FOR STORAGE AND TRANSMIT PURPOSE
 - CAUTION : DO NOT ACTUATE THE DEVICE IF NOT FITTED ON ITS MOUNTING BRACKET
 - WITH STROKE WEAR INDICATOR
 - DO NOT OPERATE THIS PRODUCT WITHOUT INSTALLATION OR FIXATION ON THE BRACKET



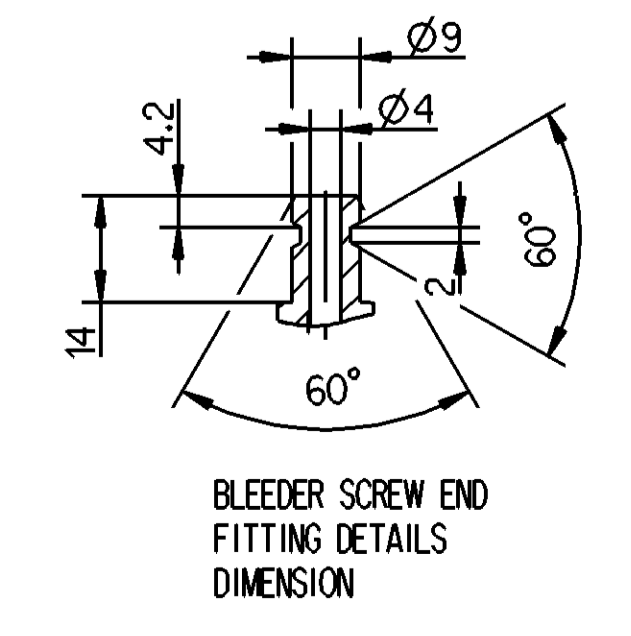
- NOTES
- DEVICE EXTREME POSITION WHEN BLEEDING
 - MISALIGNMENT OF PUSH-ROD IN ANY DIRECTION
 - BOOT THERMAL RANGE $-40^{\circ}C$ TO $+130^{\circ}C$
 - GEAR DISENGAGING STROKE
 - POSITION TO NOTE (CLUTCH IN NEW CONDITION)
 - STROKE
 - ADJUSTMENT OF WEAR INDICATOR
 - POSITION WHEN DELIVERED
- TORQUE FOR CONNECTION
- 25Nm MAX
 - $10_0^5 Nm$
 - $5_0^5 Nm$

This document is the property of Provia. It is intended for use by the customer only. It is not to be distributed, copied, or reproduced in any form without the written consent of Provia. Provia reserves the right to modify the specifications and dimensions of the product at any time without notice. The customer is responsible for keeping this document safe and secure.



MARKING OF PORTS

11	AIR INLET
14	OIL INLET
22	AIR OUTLET
31	AIR EXHAUST
32	BLEED SCREW



General Specification: ISO 8768, ISO 10471, Size 025 14405 LP	Copyright ©	Provia
Further Technical Data: PRO 411 019 0	Date: 2023-11-02	Clutch Servo
Doc. Code: 030	Sheet: 1	To: 15
General Tolerances: ISO 2011	2023-11-02	Kovpa
Range of Nominal Dimensions (d in mm)	2023-11-07	Manikman
Class: 11 ± 50, 12 ± 80, 13 ± 100, 14 ± 150, 15 ± 200, 16 ± 300, 17 ± 400	Dimensions in mm	Medium No.
File: X ± 0.05, ± 0.10, ± 0.15, ± 0.2	3.2	PRO 411 019 0
Course: ± 0.2, ± 0.3, ± 0.4, ± 0.5, ± 0.6, ± 0.7	NTS	005 EN 1/1
Tapped holes acc. to ISO 9790	A 0	CREO
1) Tolerance class: H7/g6		