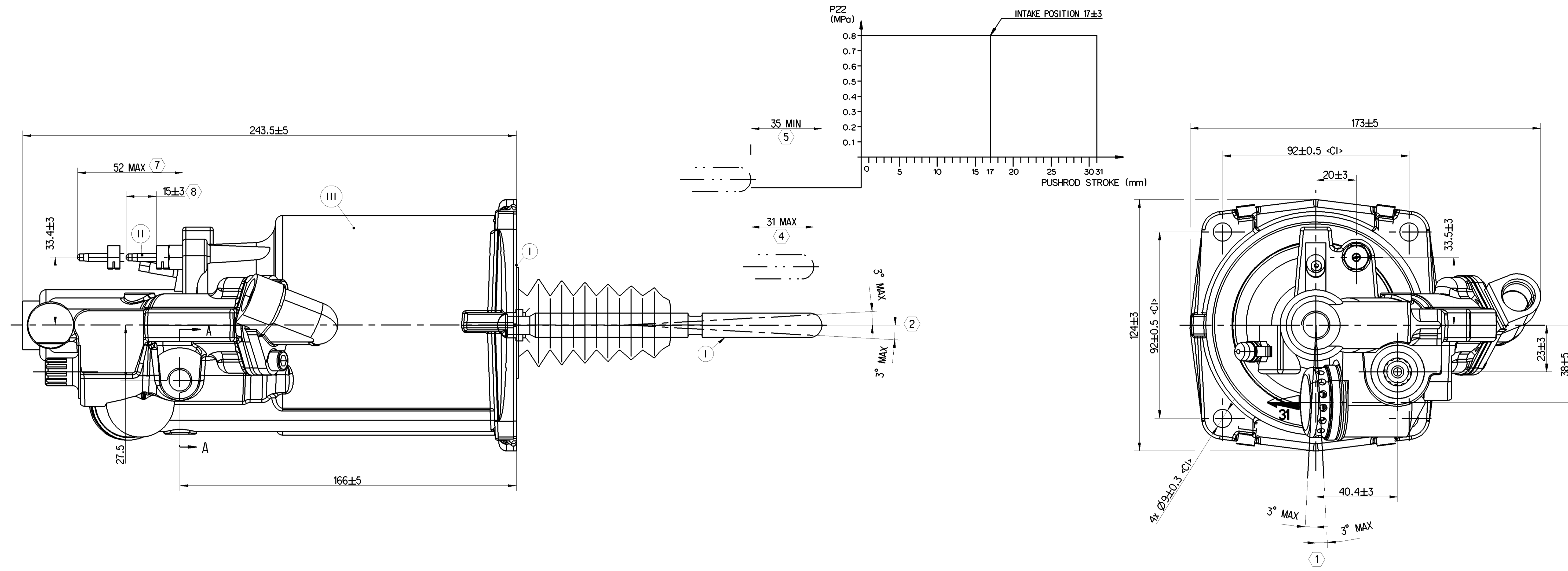


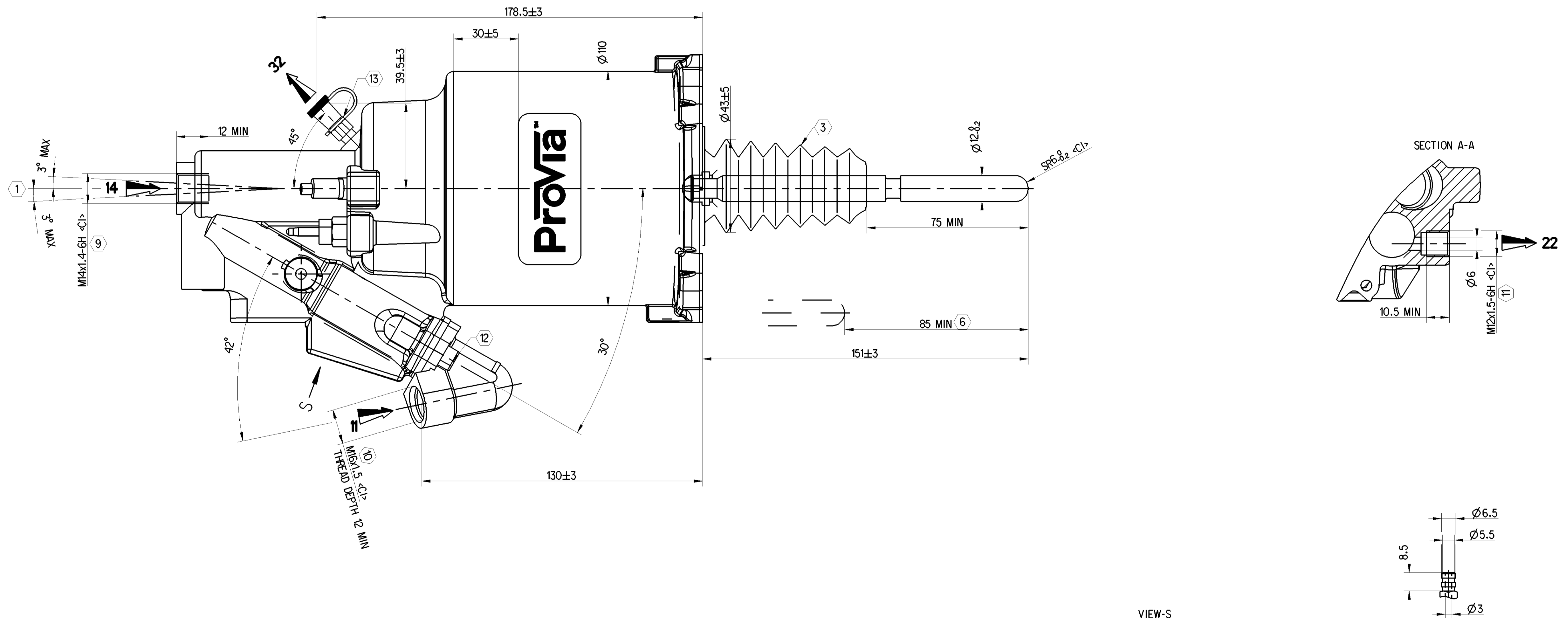
III	ALUMINIUM ALLOY	HARD ANODIZING
II	STEEL	SALT BATH (BLACK)
I	STEEL	GALVANIZED (WHITE)
POS	MATERIAL	SURFACE PROTECTION

SAFETY CHARACTERISTICS	0
SIGNIFICANT CHARACTERISTICS	0
CUSTOMER INTERFACE	7

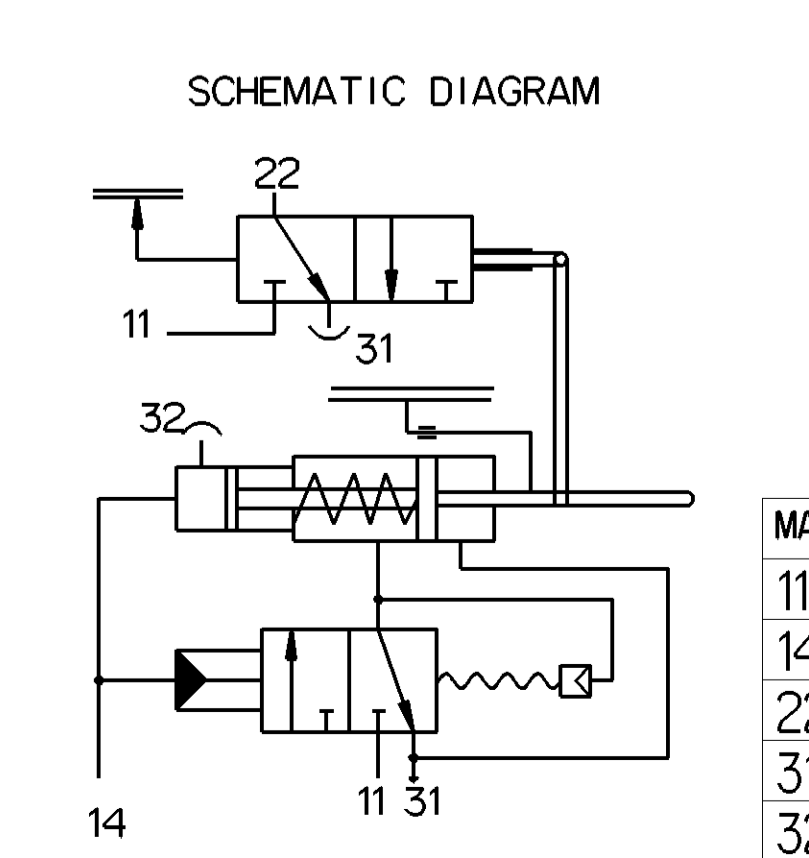
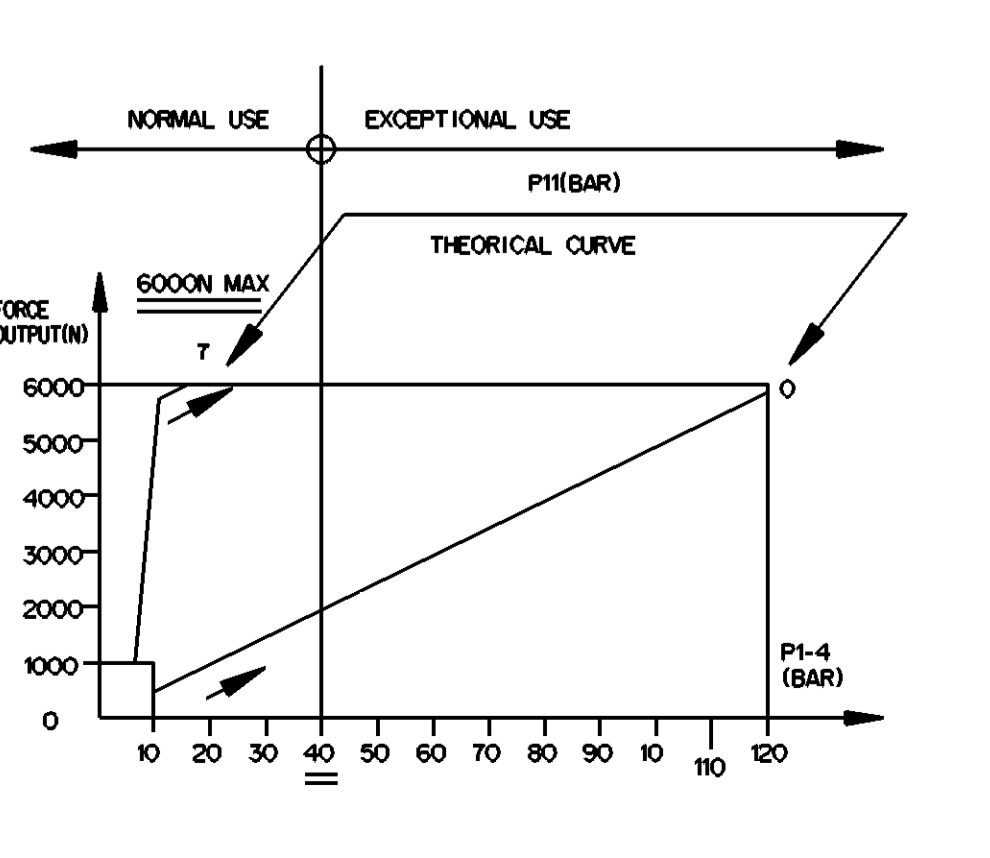
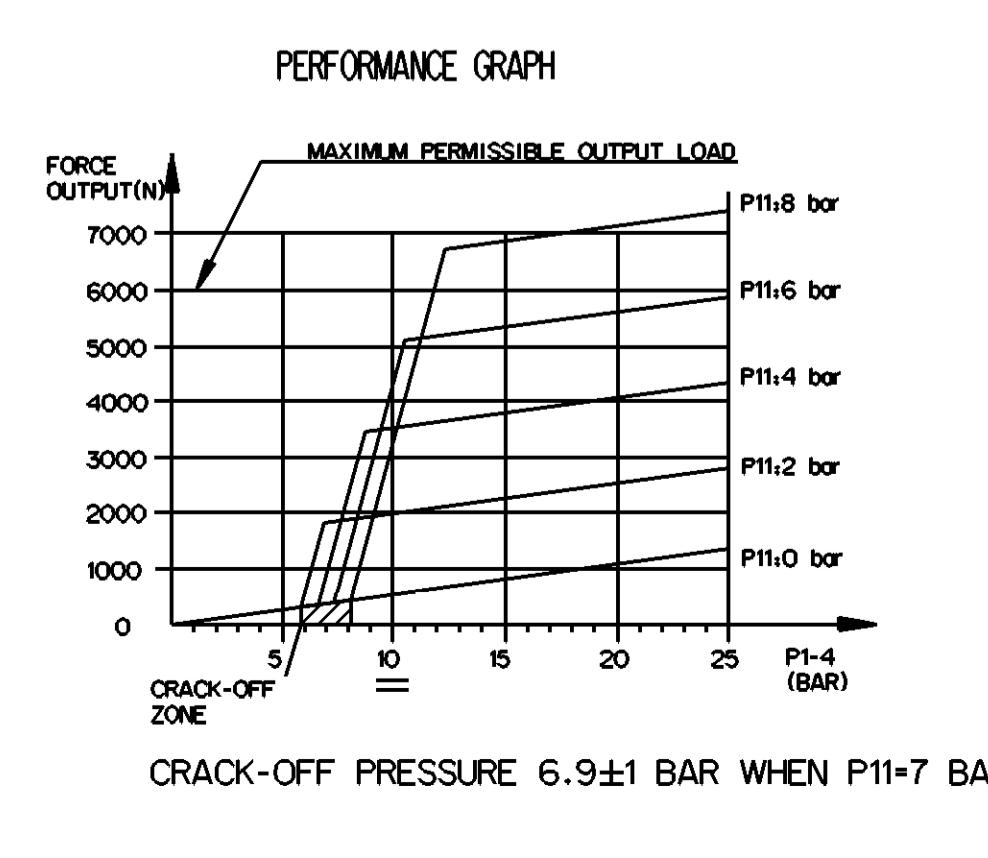


- TECHNICAL INFORMATION**
- HYDRAULIC TANK DIA : $\varnothing 25$ mm
 - AIR TANK DIA : $\varnothing 100$ mm
 - HYDRAULIC WORKING PRESSURE 4MPa
 - HYDRAULIC WORKING PRESSURE MAX 12MPa
 - AIR WORKING PRESSURE MAX 1MPa
 - WORKING TEMPERATURE : -40°C TO $+80^{\circ}\text{C}$
 - MEDIUM
HYDRAULIC MEDIUM : DOT 4 BASED BRAKE FLUID IN ACCORDANCE WITH SAE J 1703
PNEUMATIC MEDIUM : AIR
 - OIL VOLUME INPUT: $V=(SH+C)K$
K : ABSORPTION AT 120 BAR FOR $C=0$, $K=1.5\text{ cm}^3$
SH : HYDRAULIC SECTIONAL AREA = 4.9 cm^2
C : GEAR DISENGAGING STROKE
 - OPEN PORTS ARE FITTED WITH CLOSURE PLUG FOR STORAGE AND TRANSMIT PURPOSE
 - CAUTION : DO NOT ACTUATE THE DEVICE IF NOT FITTED ON ITS MOUNTING BRACKET
 - WITH STROKE WEAR INDICATOR
 - DO NOT OPERATE THIS PRODUCT WITHOUT INSTALLATION OR FIXATION ON THE BRACKET

- NOTES**
- DEVICE EXTREME POSITION WHEN BLEEDING
 - MISALIGNMENT OF PUSHROD IN ANY DIRECTION
 - BOOT THERMAL RANGE -40°C TO $+130^{\circ}\text{C}$
 - GEAR DISENGAGING STROKE
 - POSITION TO NOTE (CLUTCH IN NEW CONDITION)
 - STROKE
 - ADJUSTMENT OF WEAR INDICATOR
 - POSITION WHEN DELIVERED
- TORQUE FOR CONNECTION**
- 25Nm MAX
 - 34Nm MAX
 - 18Nm MAX
 - 10^5 Nm
 - 5^5 Nm

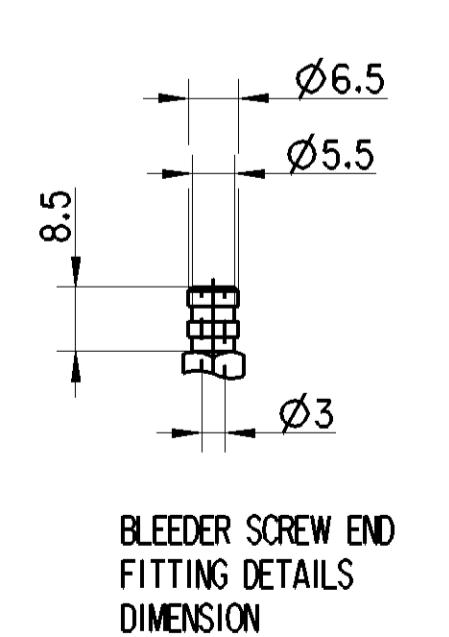
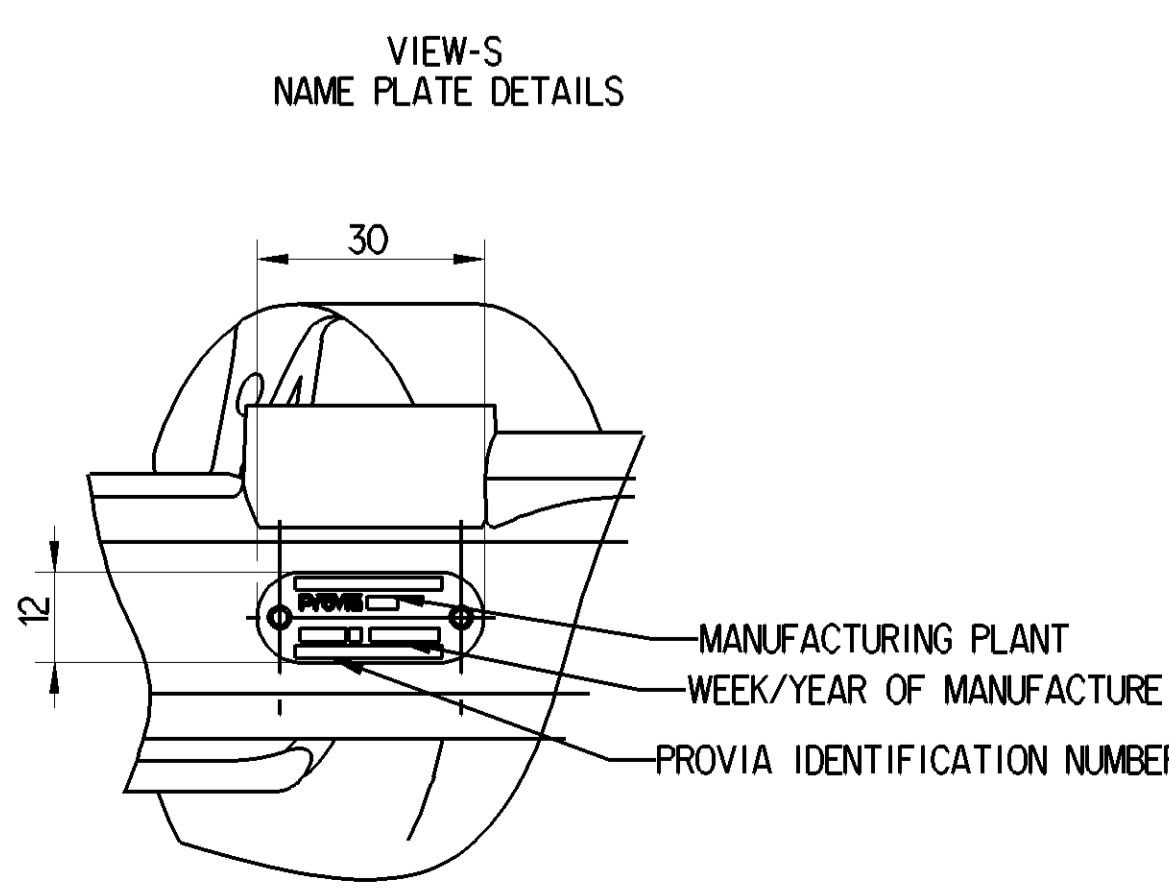


This technical drawing is the property of Provia S.p.A. and contains confidential information. It is not to be reproduced, distributed, or used in any way without the written consent of Provia S.p.A. The user is responsible for the correct use of this drawing. Provia S.p.A. is not liable for any damage or loss resulting from the use of this drawing.



MARKING OF PORTS

11	AIR INLET
14	OIL INLET
22	AIR OUTLET
31	AIR EXHAUST
32	BLEED SCREW



General Specifications: ISO 9001, IATF 16949, CE, RoHS, REACH, ATEX, ISO 14001, ISO 45001	Doc. Code: 020	Sheet: 1	To: 19	Copyright © Provia S.p.A.	Provia
Doc. Code: 020	Rev: 01	2023-11-02	2023-11-07	Manifattura	CLUTCH SERVO
Class: 1	2	50	80	400	4000
Flow: 1	1.5	3	4.5	6	8
Medium: X	1.5	3.5	4.5	6.5	8.5
Course: 1	1.5	3.5	4.5	6.5	8.5
Tapped holes acc.:					
A 0		CREO	NTS	PRO 411 027 0	005 EN 1/1