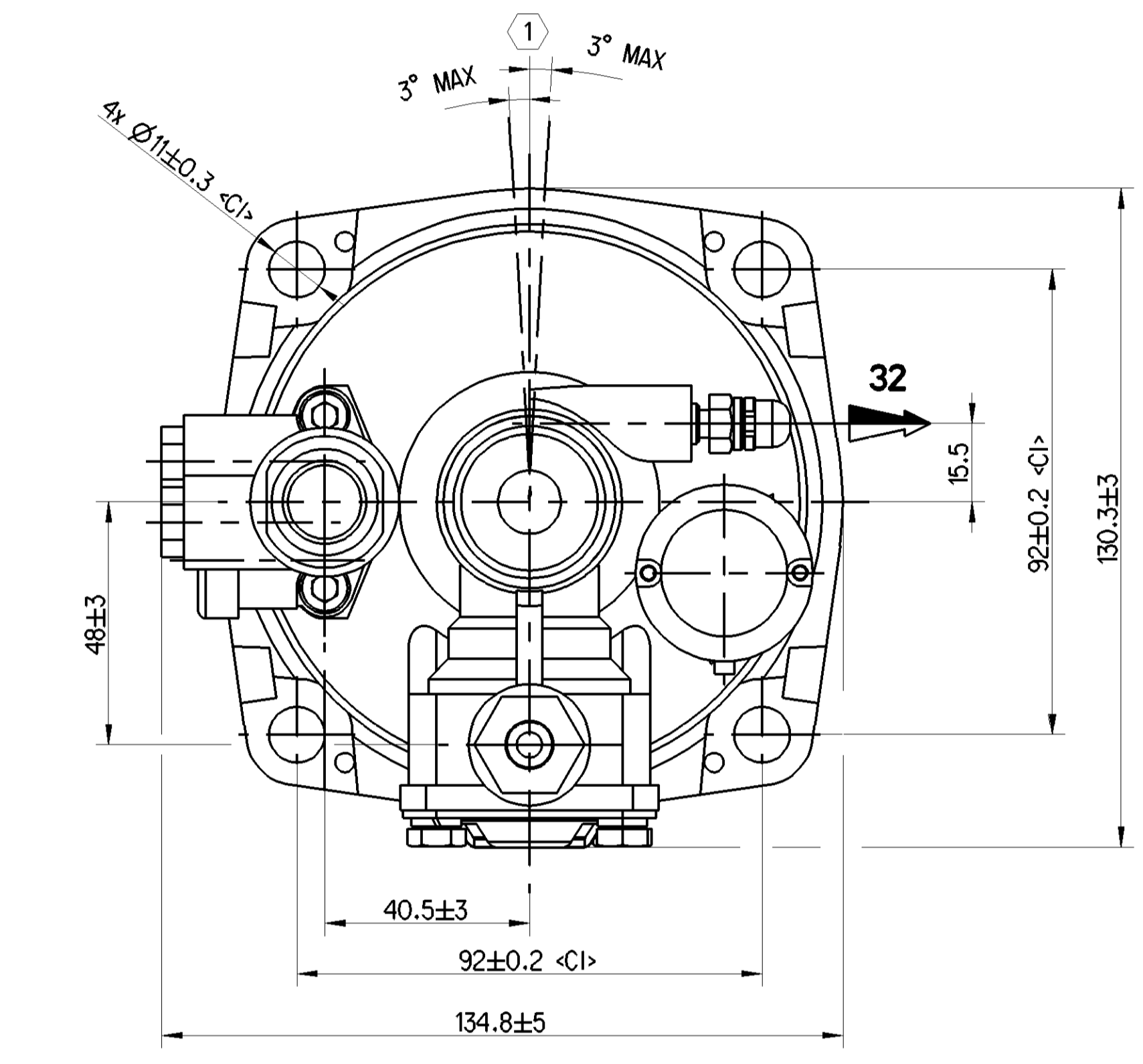
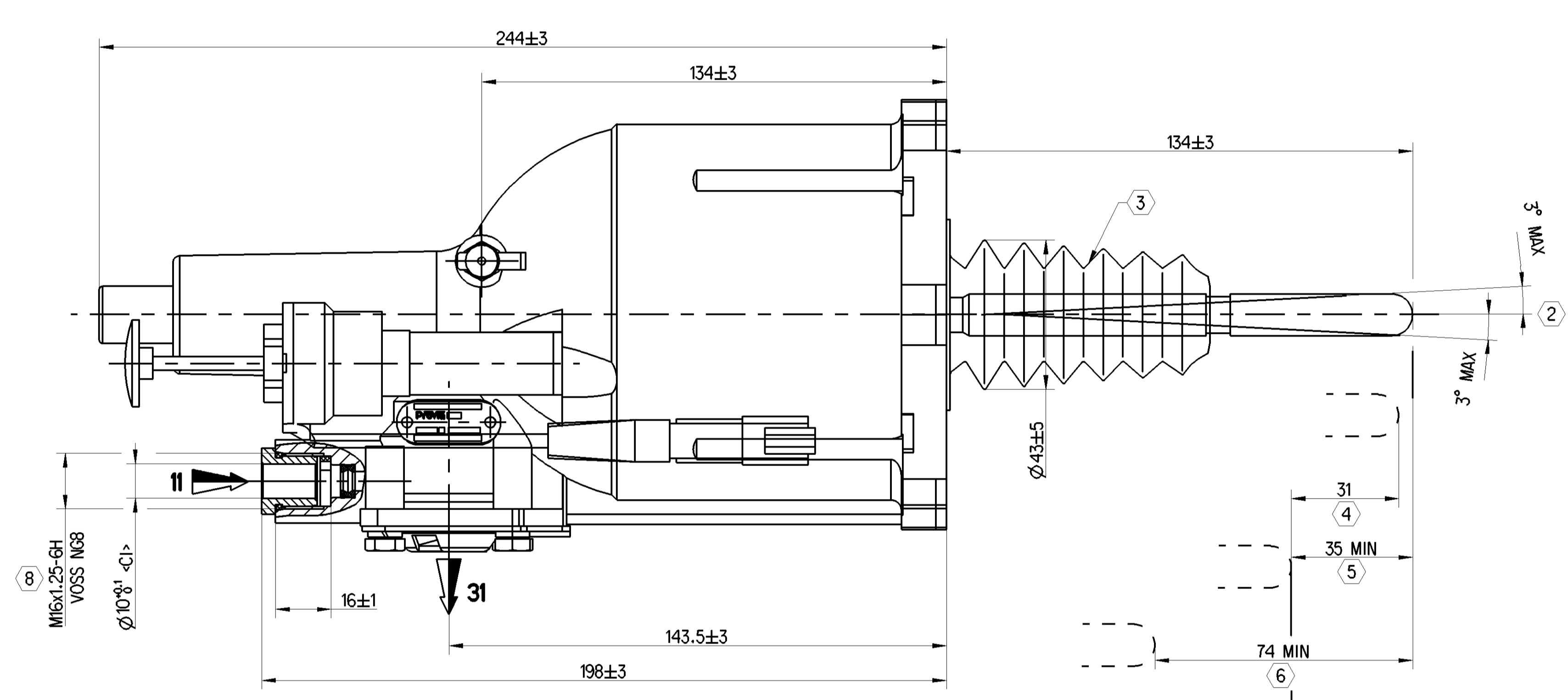
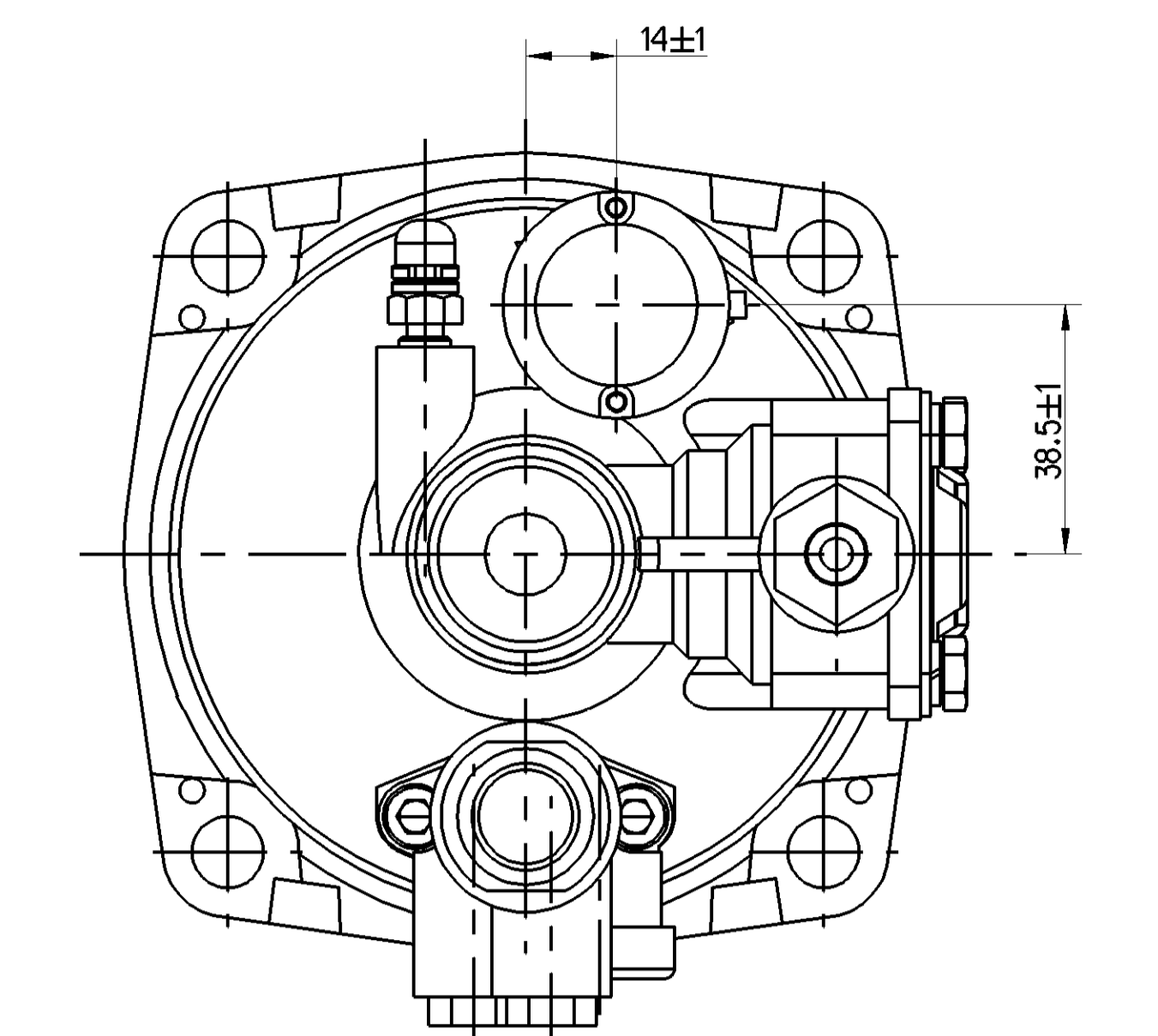
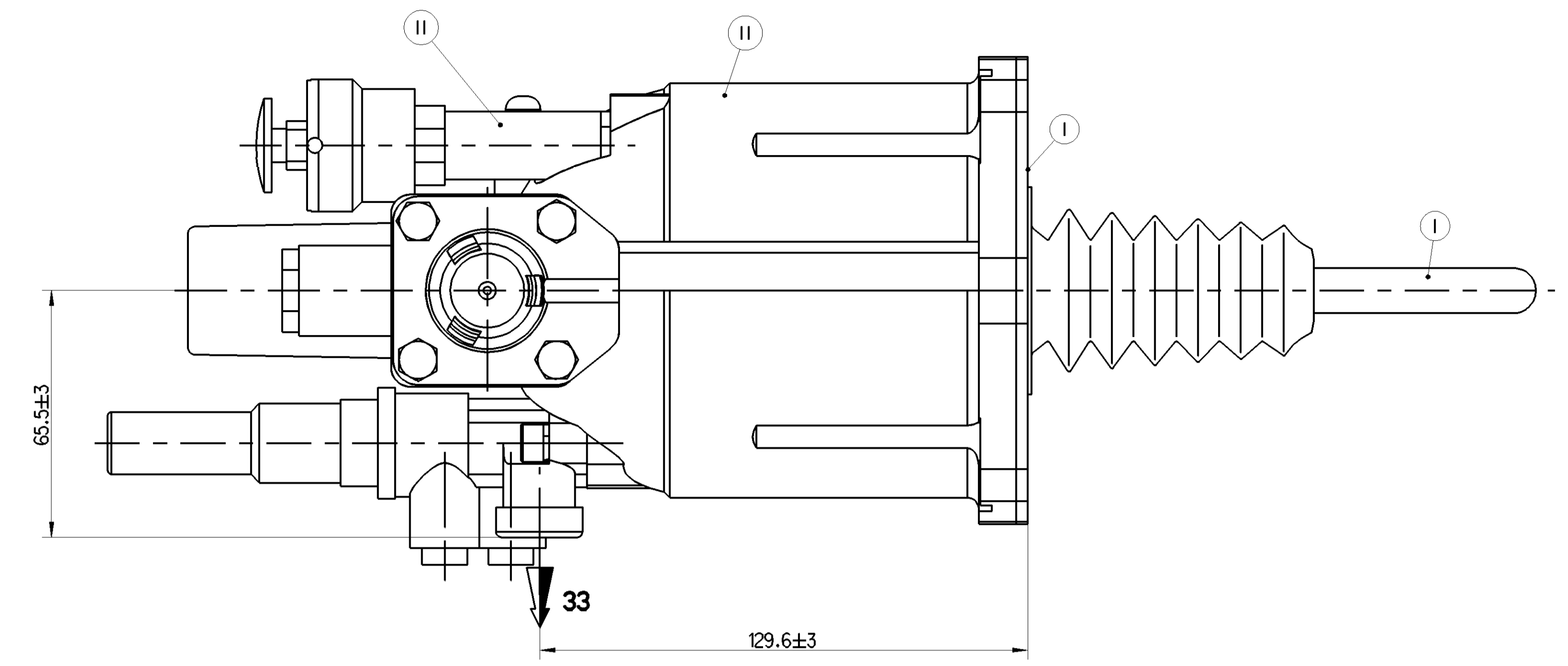


III	ALUMINIUM ALLOY	PASSIVATION TREATMENT
II	ALUMINIUM ALLOY	HARD ANODIZING
I	STEEL	GALVANIZED (WHITE)
POS	MATERIAL	SURFACE PROTECTION

SAFETY CHARACTERISTICS	0
SIGNIFICANT CHARACTERISTICS	0
CUSTOMER INTERFACE	8



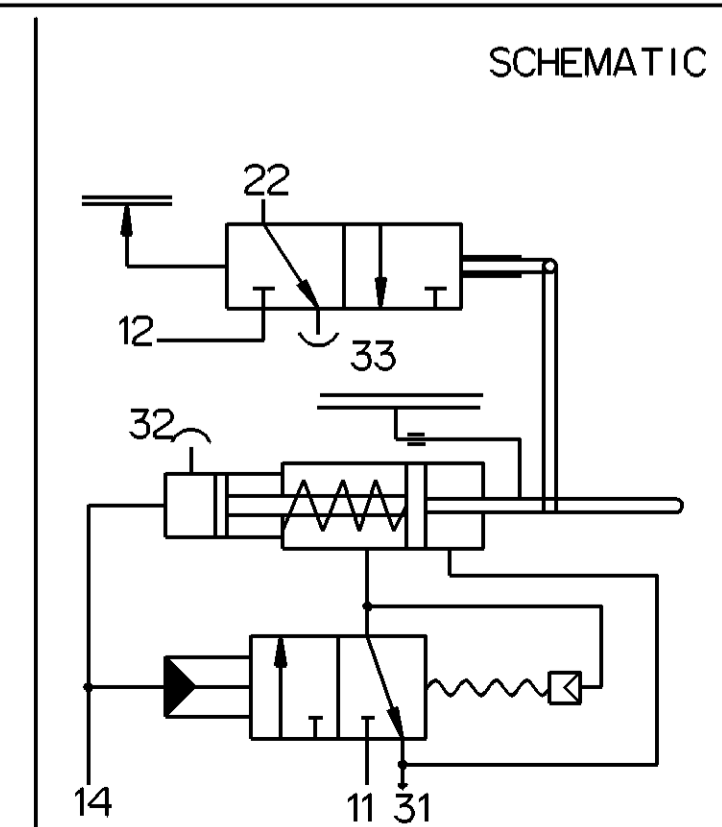
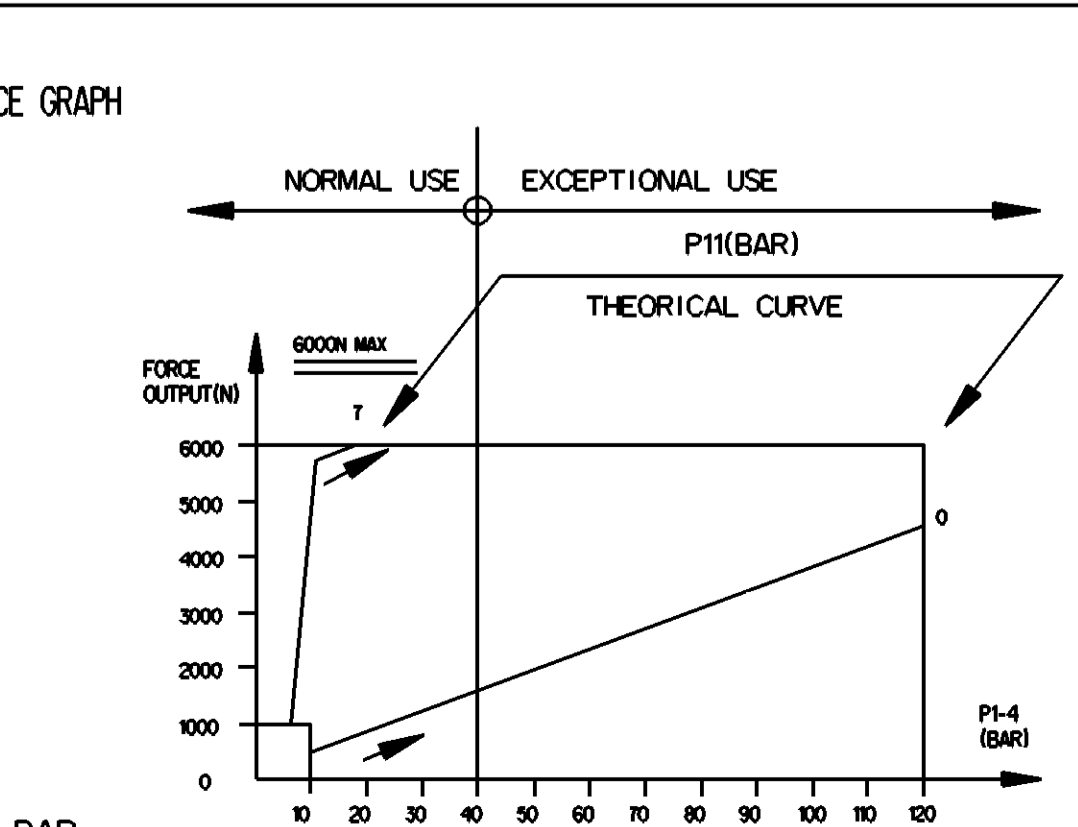
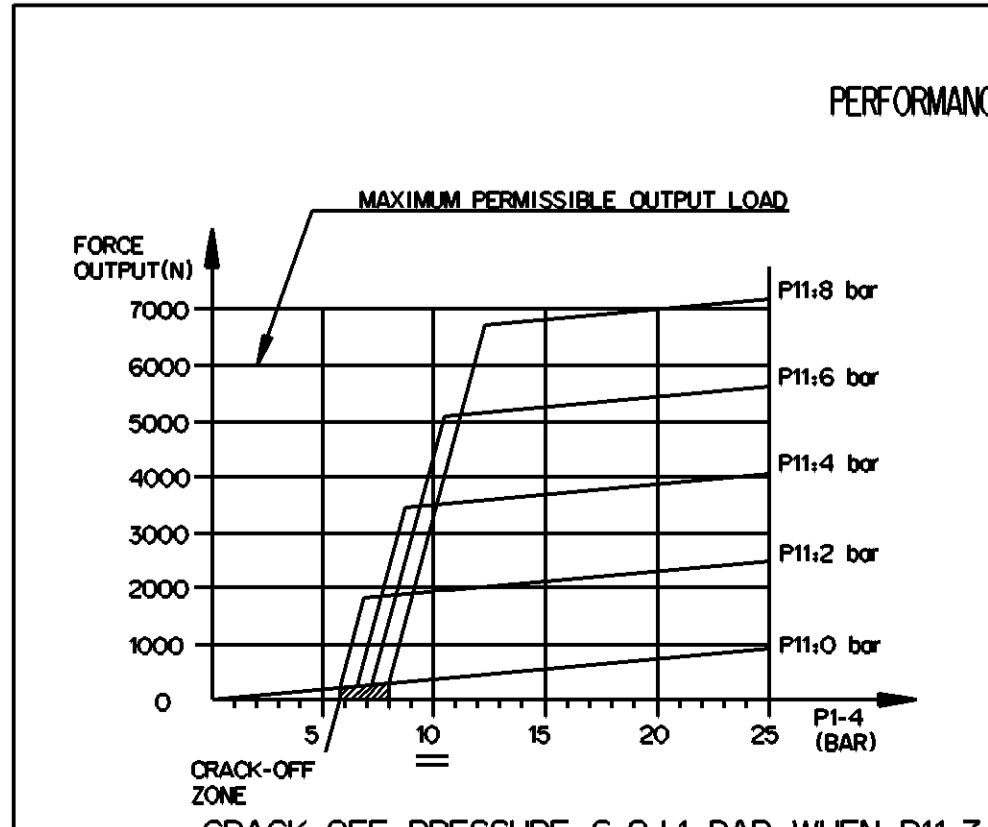
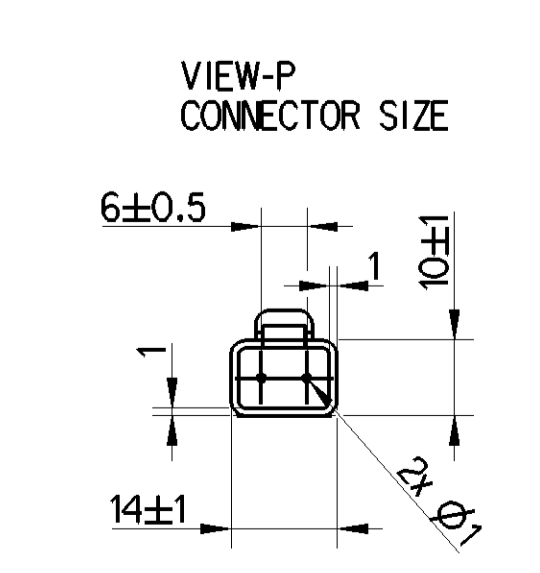
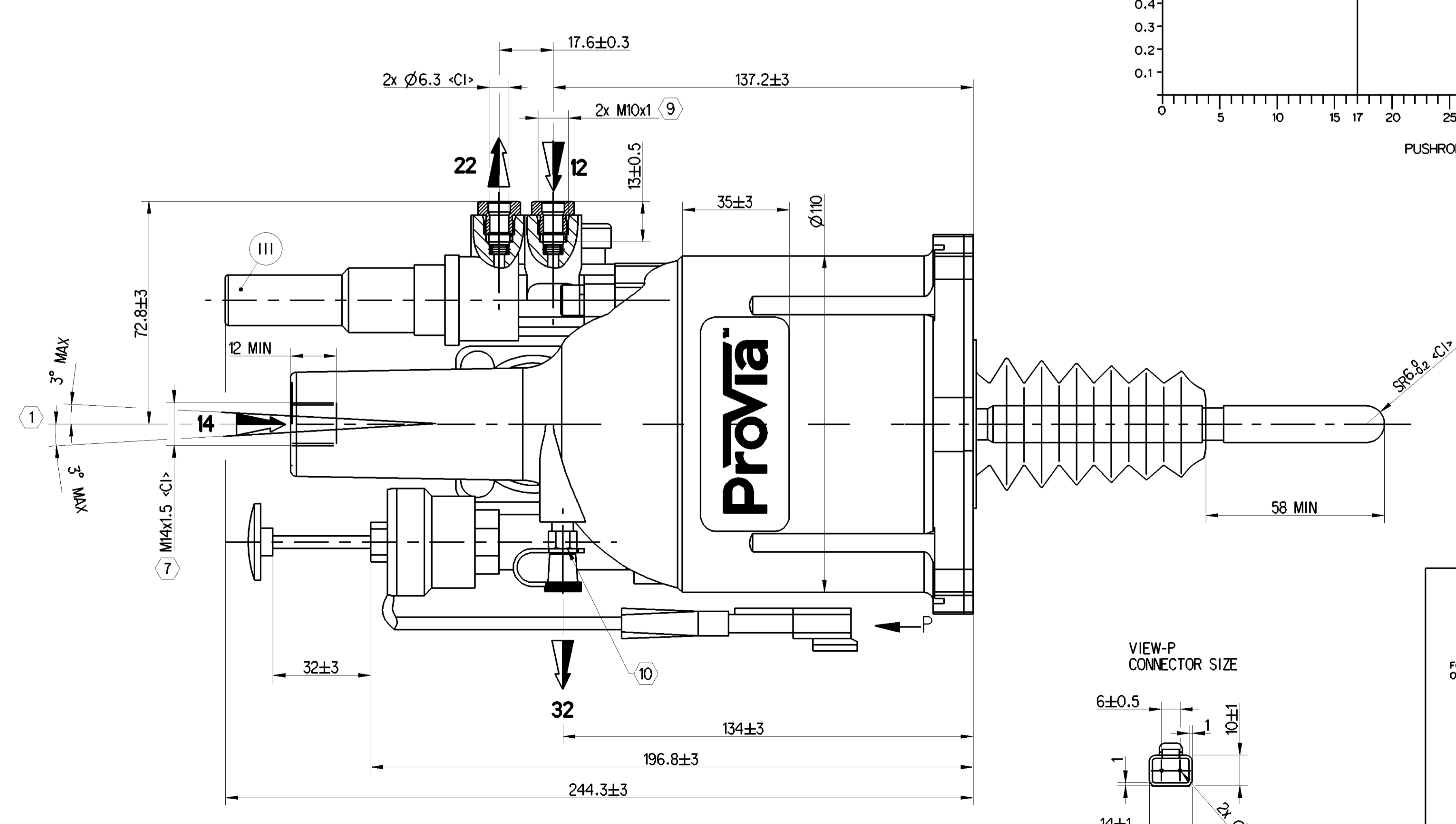
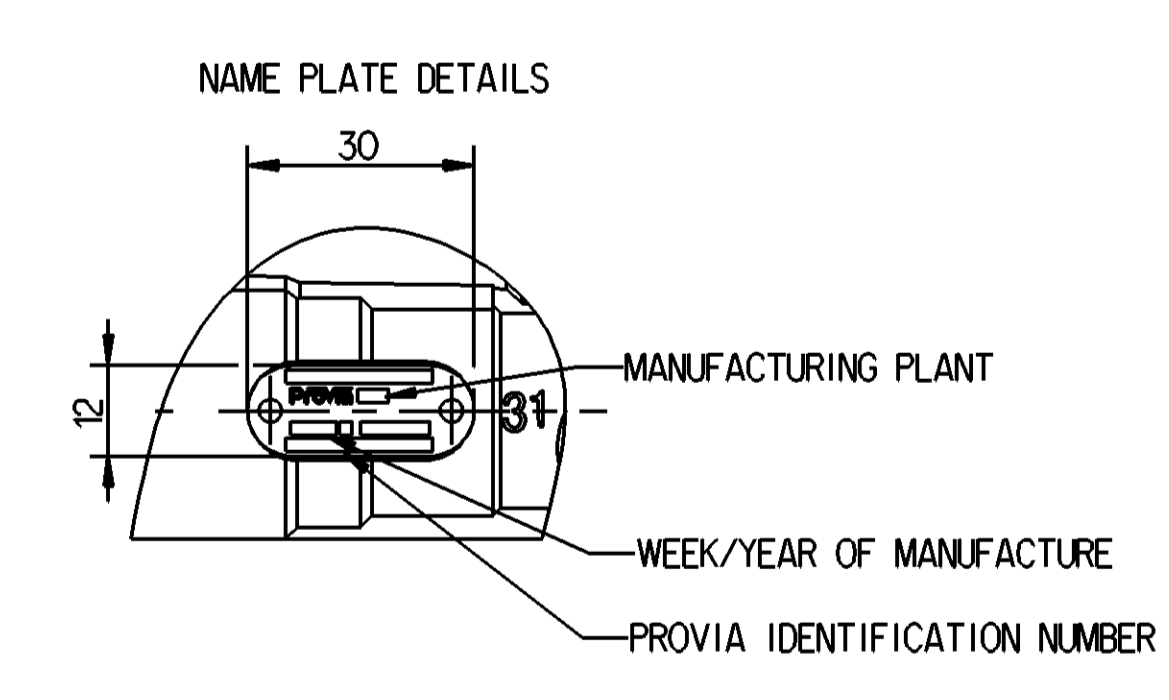
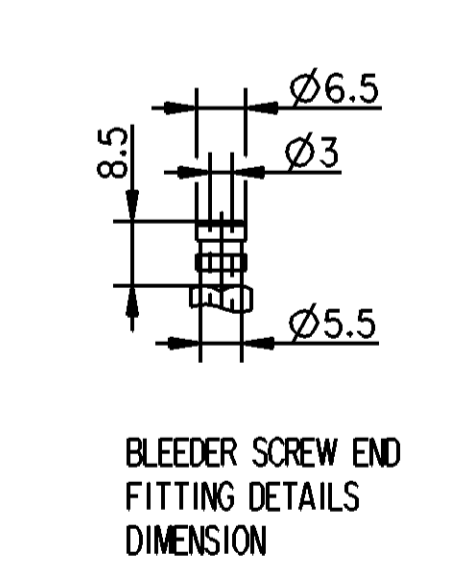
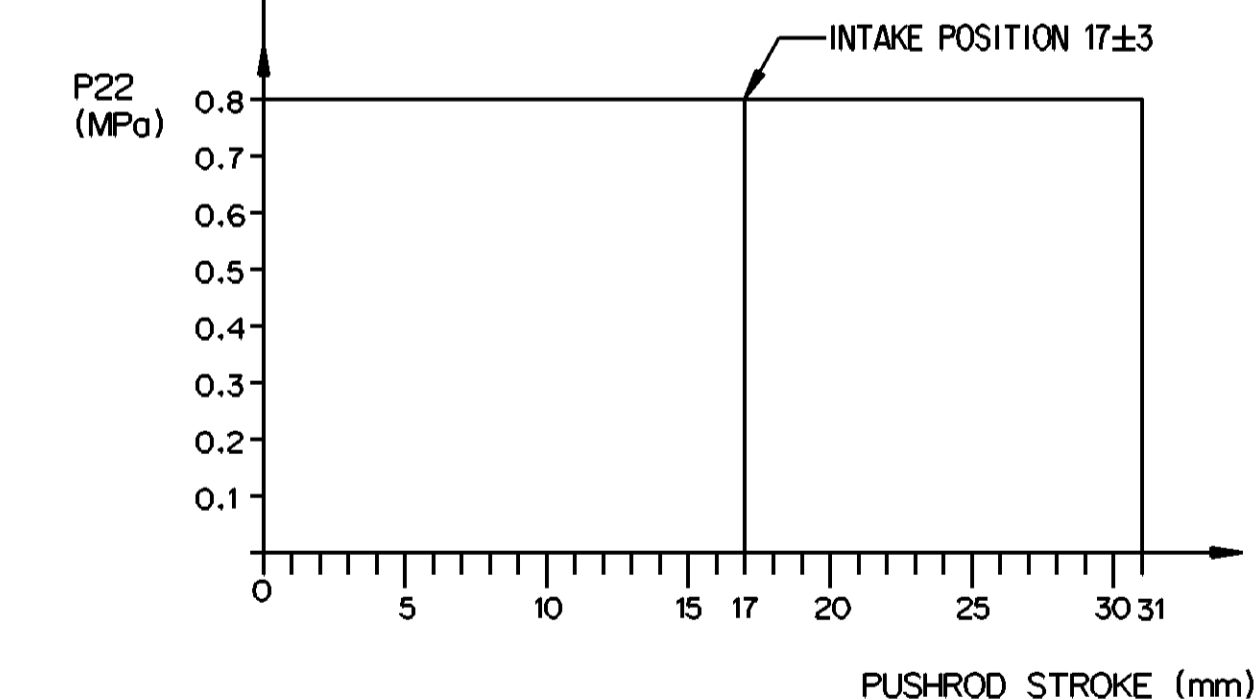
- TECHNICAL INFORMATION
1. HYDRAULIC TANK DIA:  $\varnothing 22$ mm
  2. AIR TANK DIA:  $\varnothing 10$ mm
  3. HYDRAULIC WORKING PRESSURE : 4MPa
  4. HYDRAULIC WORKING PRESSURE MAX : 12MPa
  5. AIR WORKING PRESSURE MAX 1MPa
  6. WORKING TEMPERATURE: -40°C TO +80°C
  7. MEDIUM  
HYDRAULIC MEDIUM : DOT 4 BASED BRAKE FLUID IN ACCORDANCE WITH SAE J 1703  
PNEUMATIC MEDIUM : AIR
  8. OIL VOLUME INPUT:  $V=(SH+C)K$   
K : ABSORPTION AT 120 BAR FOR C=0,  $K<1.5cm^3$   
SH : HYDRAULIC SECTIONAL AREA = 3.8  $cm^2$   
C : GEAR DISENGAGING STROKE
  9. OPEN PORTS ARE FITTED WITH CLOSURE PLUG FOR STORAGE AND TRANSMIT PURPOSE
  10. CAUTION : DO NOT ACTUATE THE DEVICE IF NOT FITTED ON ITS MOUNTING BRACKET
  11. WITH STROKE WEAR INDICATOR
  12. DO NOT OPERATE THIS PRODUCT WITHOUT INSTALLATION OR FIXATION ON THE BRACKET
- SENSOR DETAILS:
13. FREE LENGTH OF THE WIRE 100 MAX
  14. MEASURING PRINCIPLE : ON-OFF SWITCH
  15. RATED CURRENT : 20-50mA
  16. RATED VOLTAGE : 24V
  17. WATER PROOF GRADE > IP67
  18. TRAVEL 4.5mm (CONTACT MOVEMENT 1.5mm, SWITCH ON,CAN CONTINUE TO MOVE 3mm THEREAFTER)
  19. OPERATING LIFE OF 1 MILLION TIMES

NOTES

1	DEVICE EXTREME POSITION WHEN BLEEDING
2	MISALIGNMENT OF PUSHROD IN ANY DIRECTION
3	BOOT THERMAL RANGE -40°C TO +130°C
4	GEAR DISENGAGING STROKE
5	POSITION TO NOTE (CLUTCH IN NEW CONDITION)
6	STROKE

TORQUE FOR CONNECTION

7	25Nm MAX
8	34Nm MAX
9	15Nm MAX
10	5 <sup>+5</sup> Nm



MARKING OF PORTS

11	AIR INLET
14	OIL INLET
12	AIR INLET
22	AIR OUTLET
31	AIR EXHAUST
32	BLEED SCREW
33	AIR EXHAUST

General Specification: ISO 8768, JIS-B 5041, Size (D) 14x10 LP		Copyright ©		Provia	
Further Technical Data: PRO 411 036 O		Date		2023-11-07	
Doc. Code: 036		Sheet		1 To 13	
General Tolerances: ISO 2013		Date		2023-11-07	
Range of Nominal Dimensions (d in mm)		Revision		1	
Class	0	± 0.05	± 0.1	± 0.15	± 0.2
Fin	X	± 0.05	± 0.1	± 0.15	± 0.2
Medium	X	± 0.1	± 0.2	± 0.3	± 0.4
Coarse	X	± 0.2	± 0.3	± 0.4	± 0.5
Tapped holes acc.:		Cylindrical holes acc.:		± 0.1	
1) Tolerance class: Approx. Chromatized		2) Tolerance class: Approx. Chromatized		3) Tolerance class: Approx. Chromatized	
A 0		CREO		E30116	
NTS		PRO 411 036 O		005 EN 1/1	
5630_01		Revision		1	