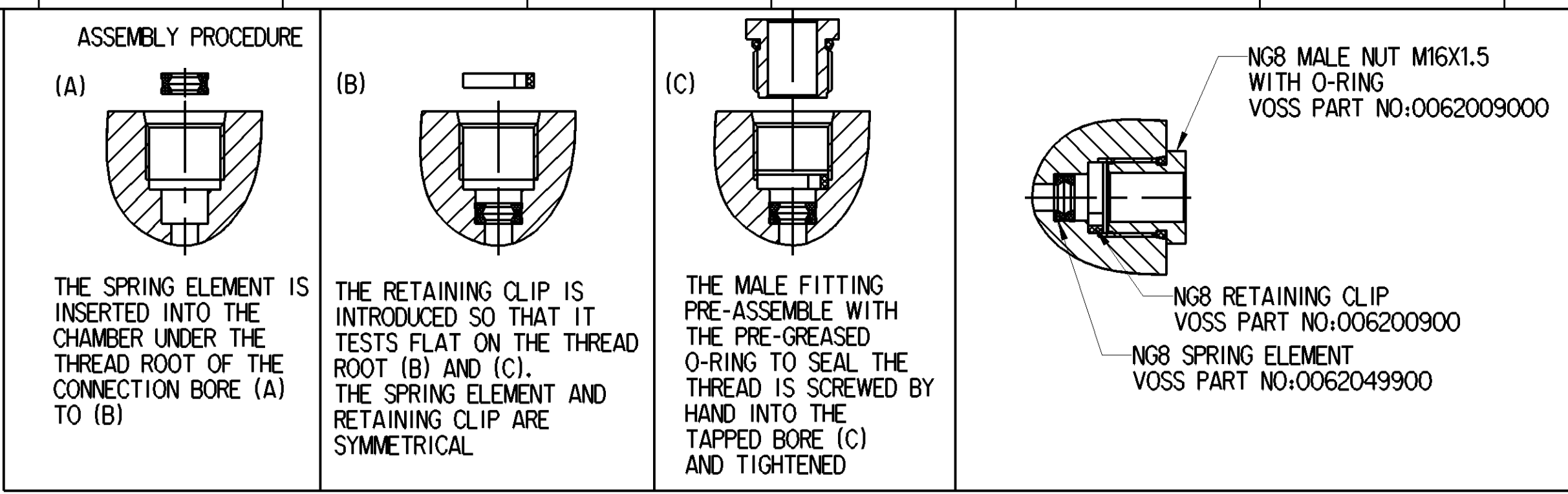


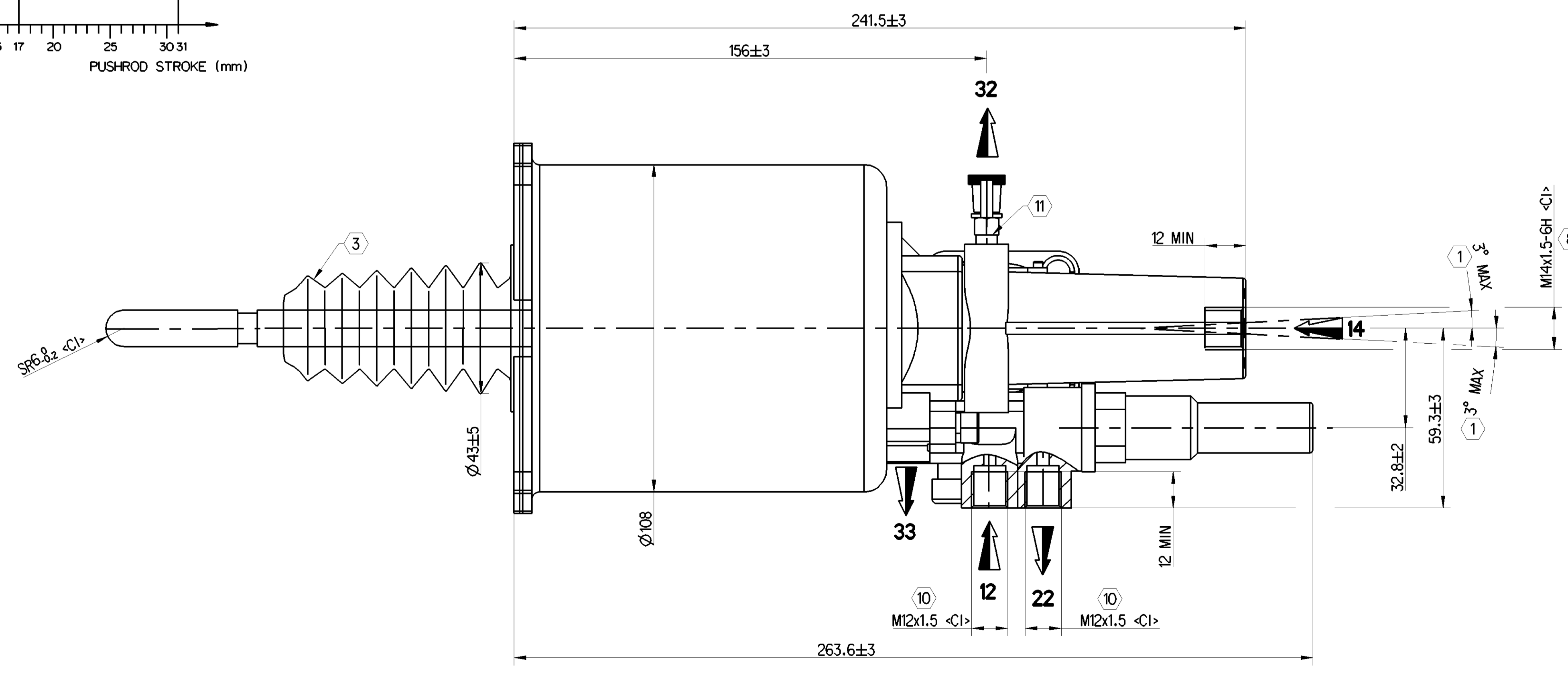
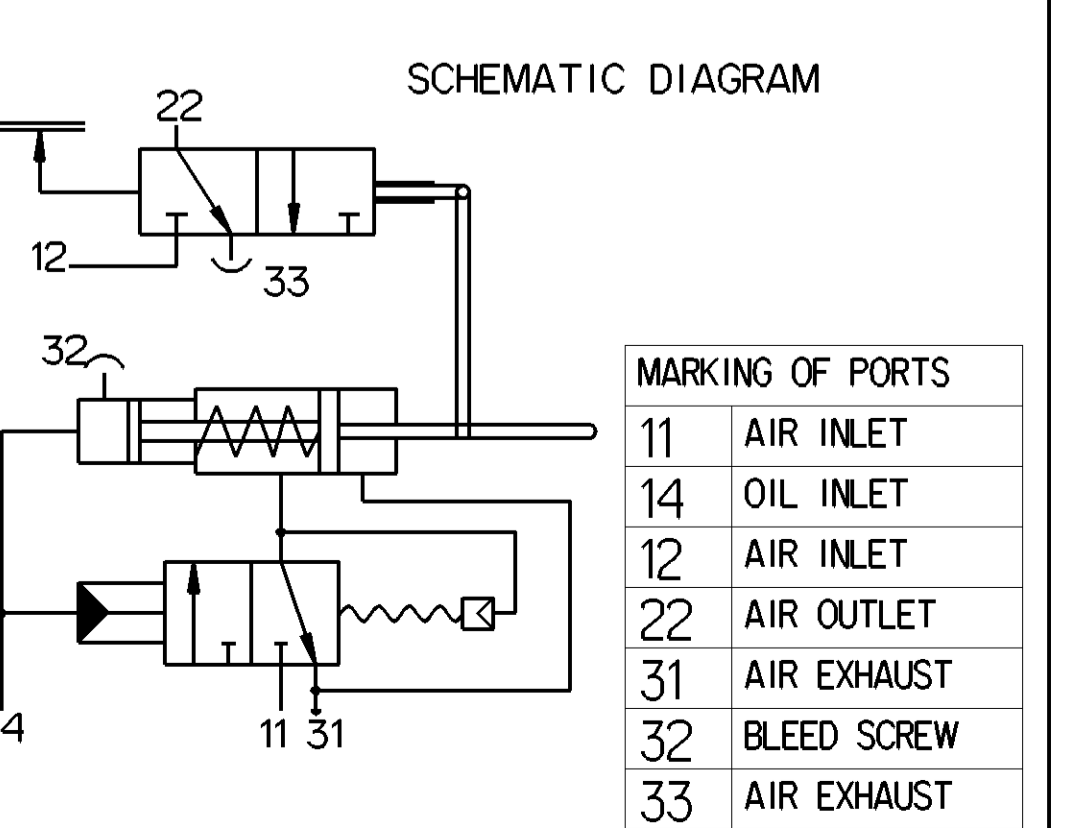
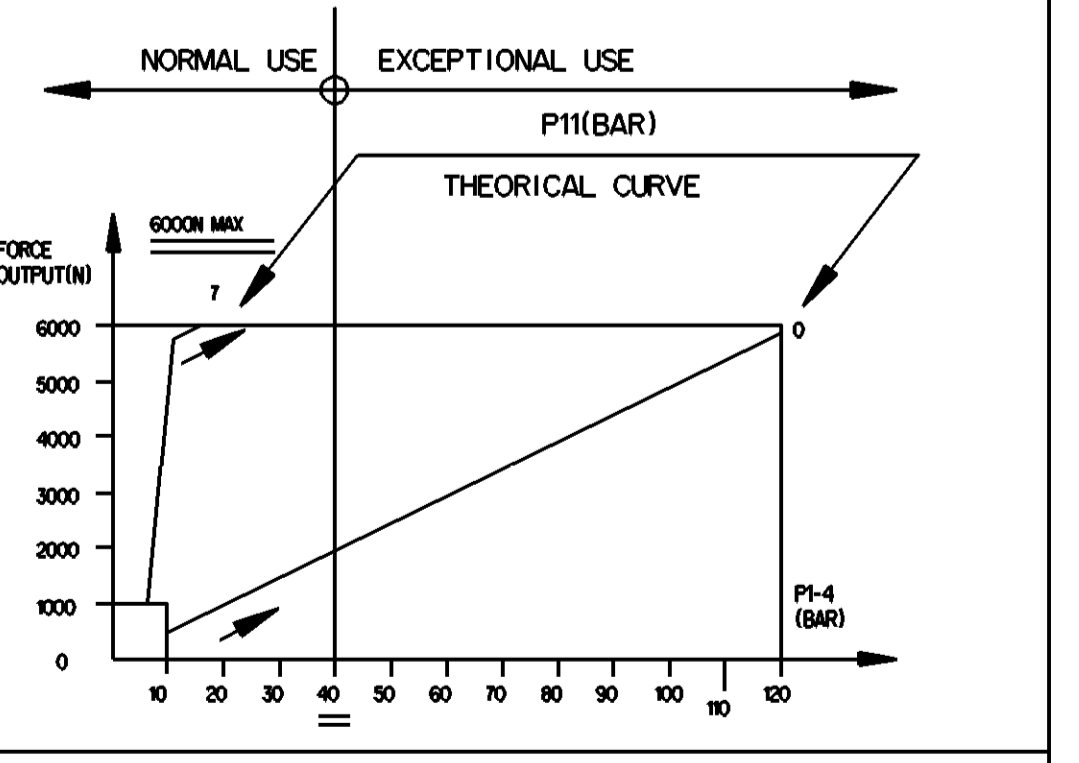
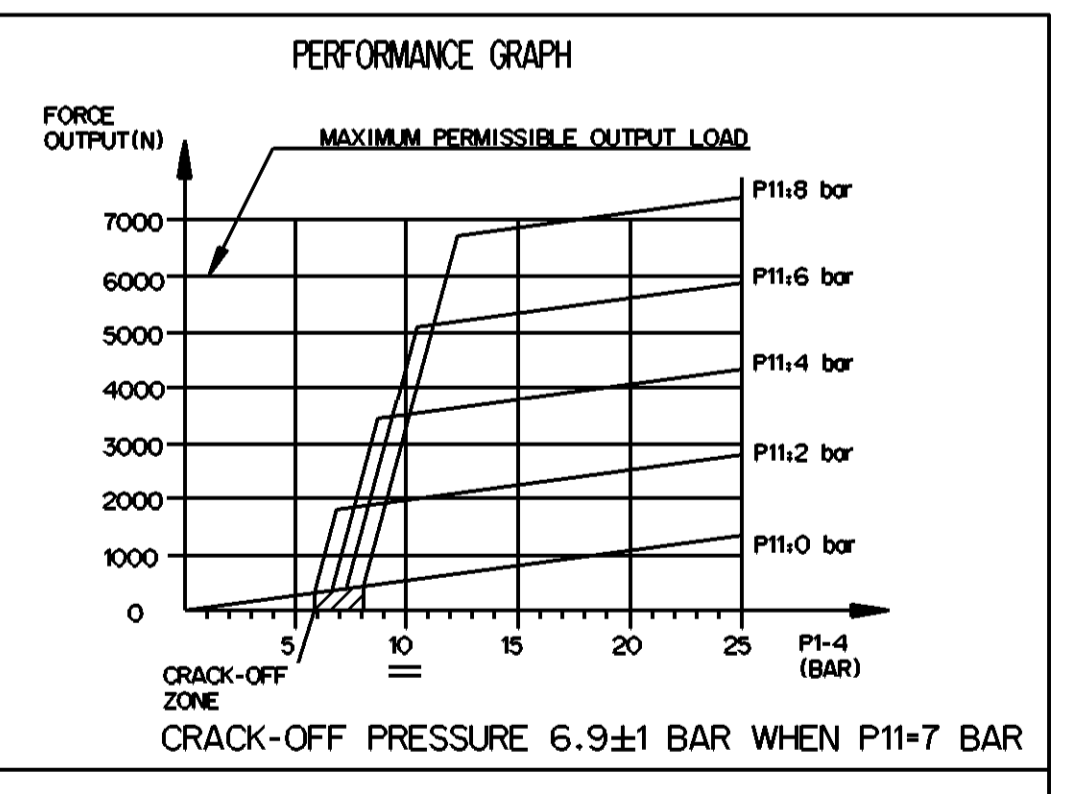
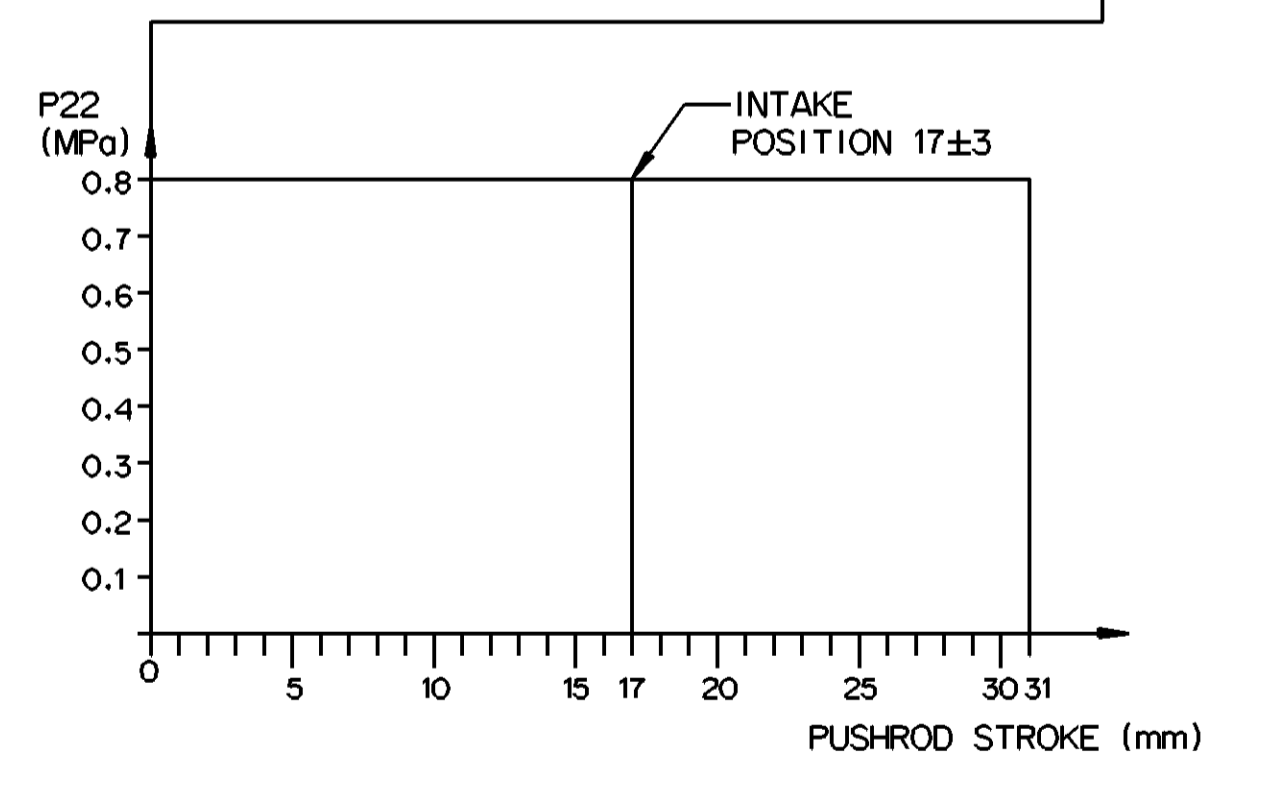
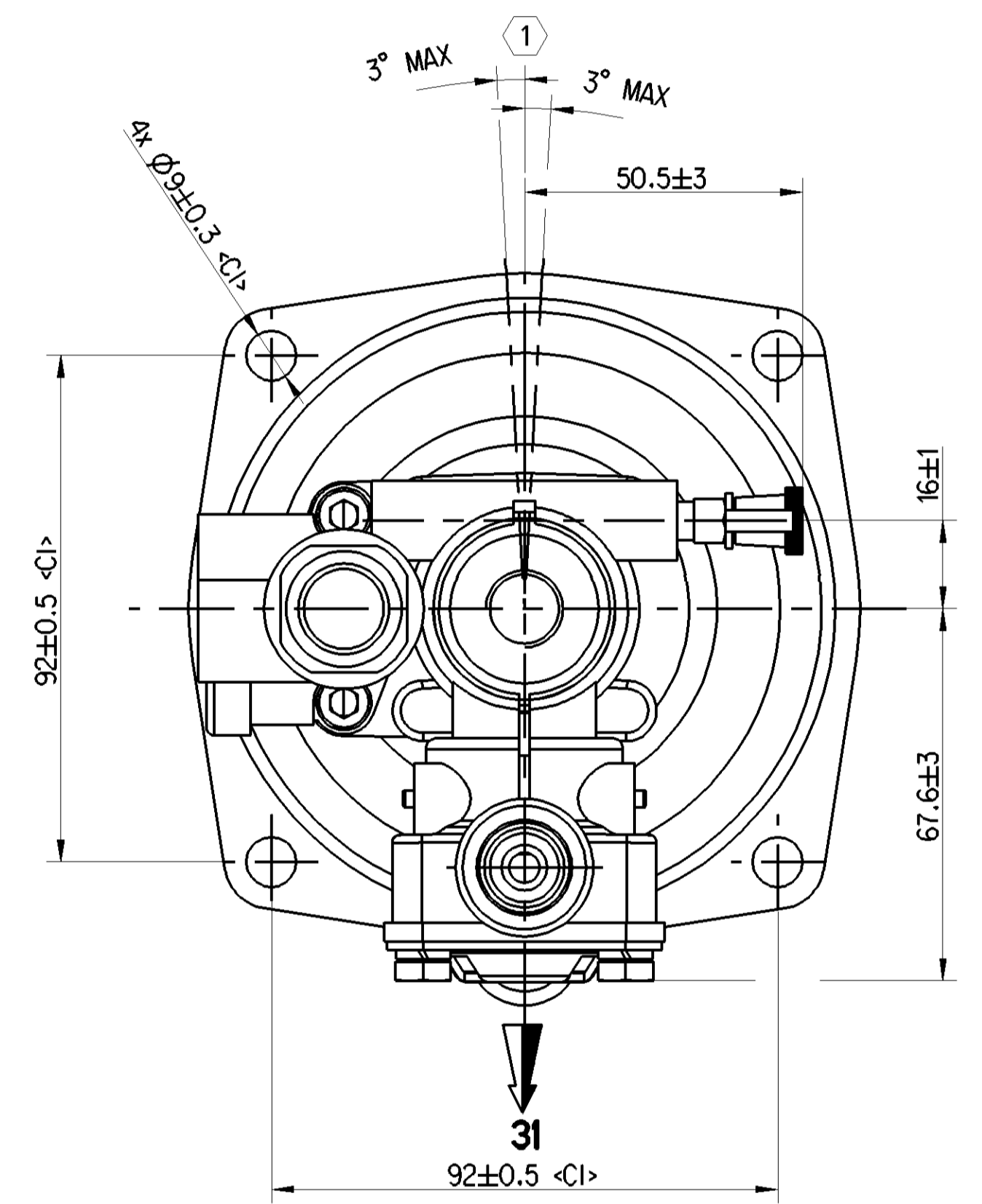
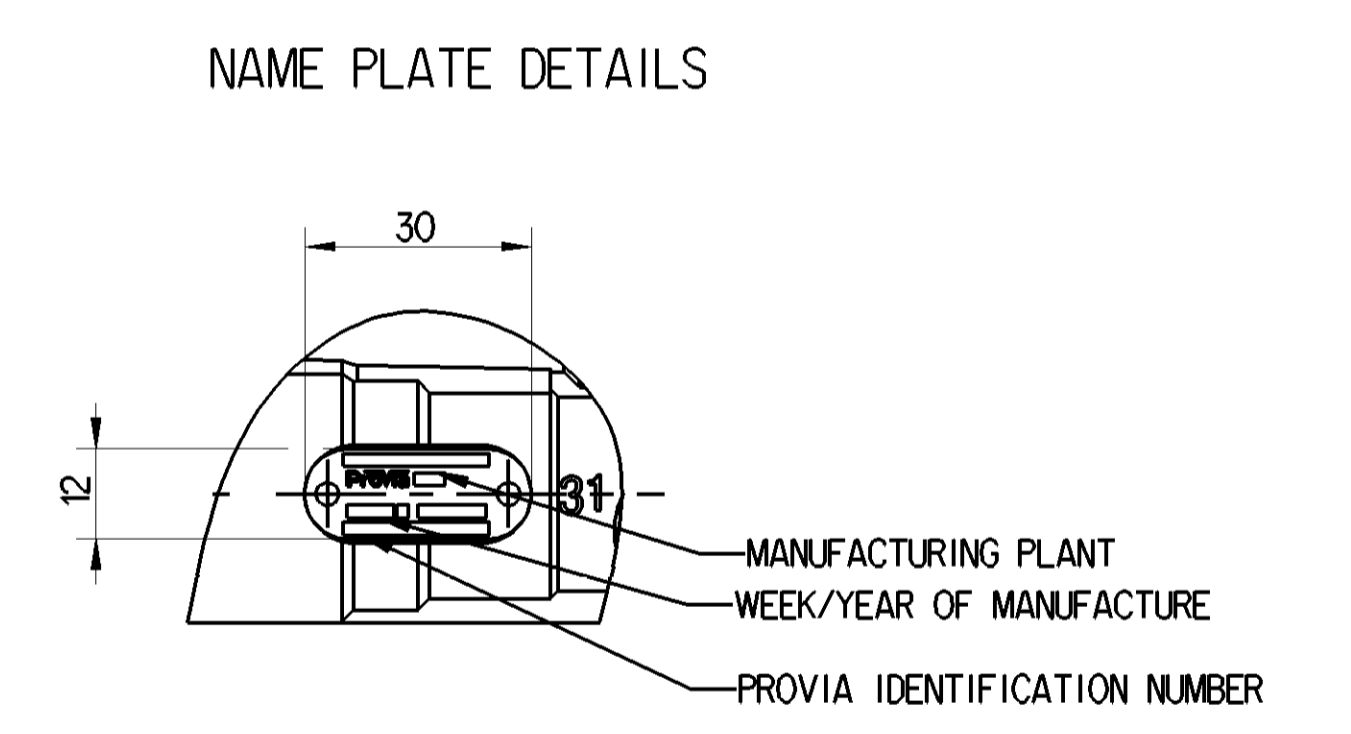
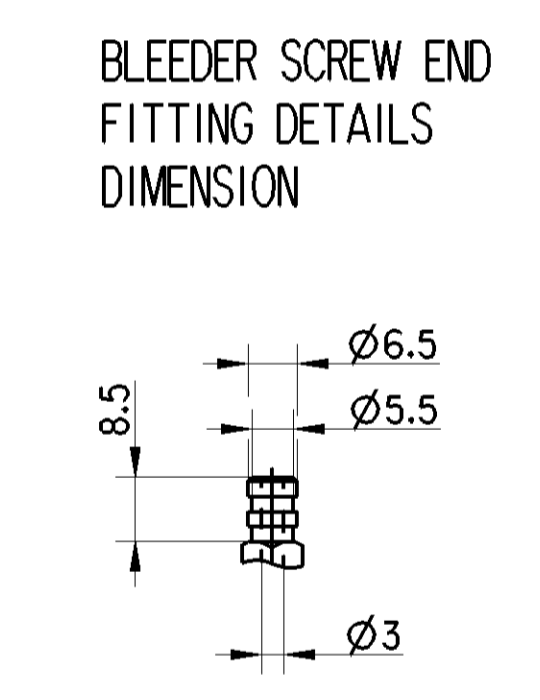
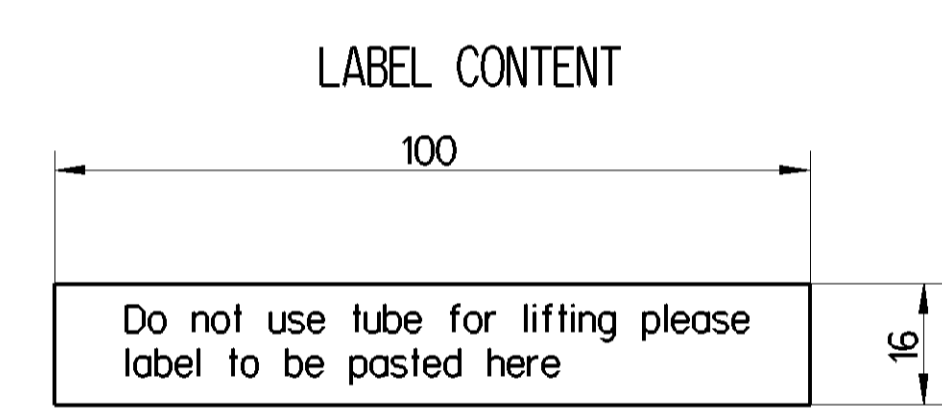
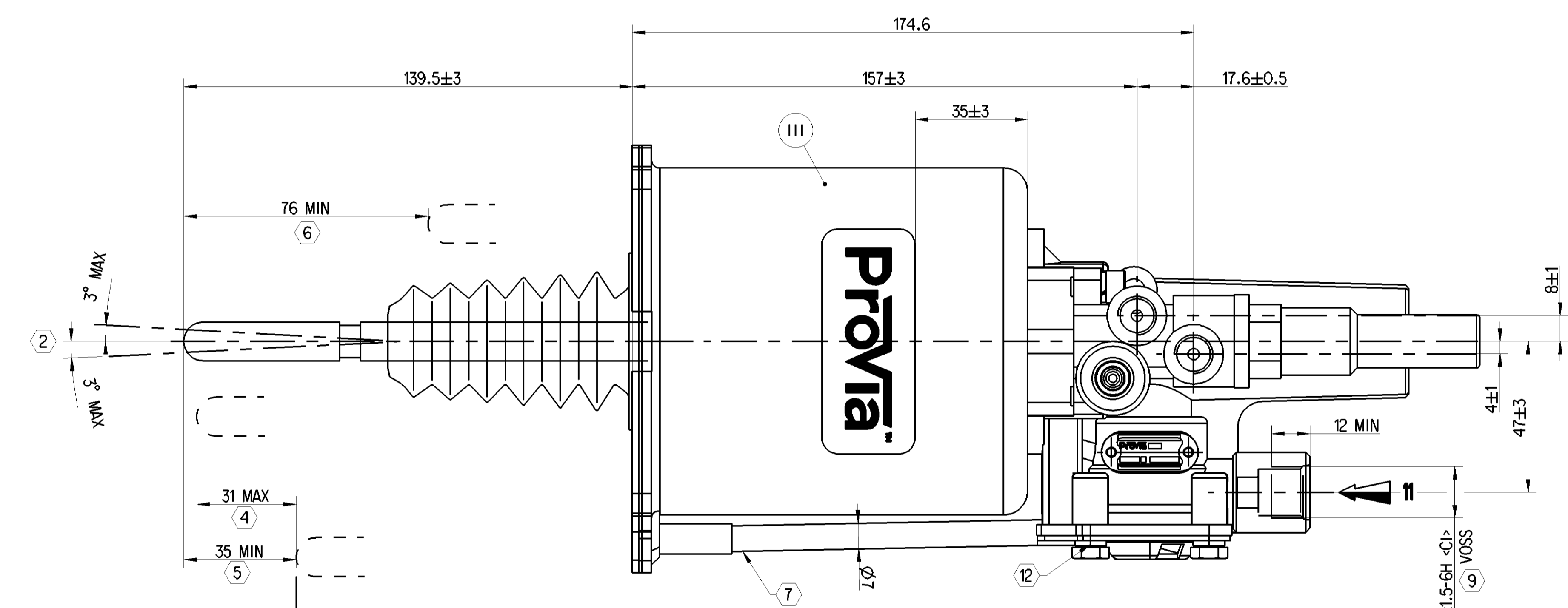
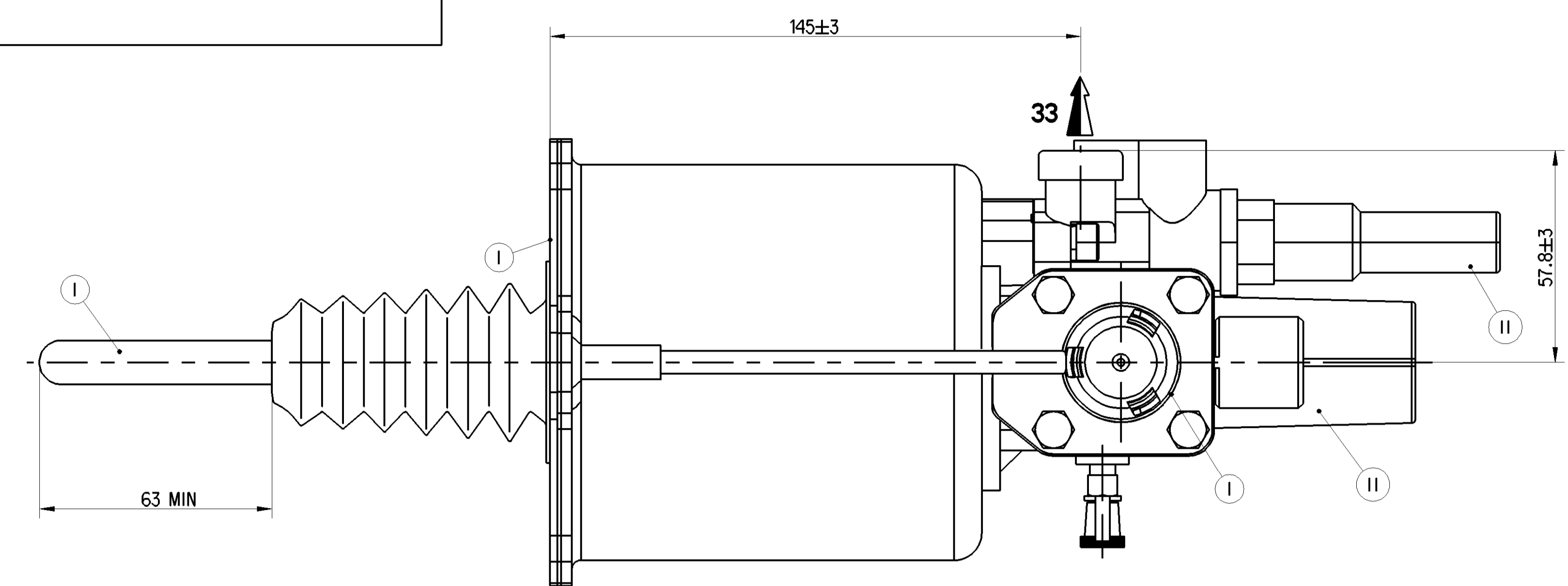
III	STEEL	ELECTROPHORESIS
II	ALUMINIUM ALLOY	PASSIVATION TREATMENT
I	STEEL	GALVANIZED (WHITE)
POS	MATERIAL	SURFACE PROTECTION



SAFETY CHARACTERISTICS	0
SIGNIFICANT CHARACTERISTICS	0
CUSTOMER INTERFACE	8

- TECHNICAL INFORMATION**
- HYDRAULIC TANK DIA :  $\varnothing 25\text{mm}$
  - AIR TANK DIA :  $\varnothing 102\text{mm}$
  - HYDRAULIC WORKING PRESSURE 4MPa
  - HYDRAULIC WORKING PRESSURE MAX 12MPa
  - AIR WORKING PRESSURE MAX 1MPa
  - WORKING TEMPERATURE :  $-40^{\circ}\text{C}$  TO  $+80^{\circ}\text{C}$
  - MEDIUM  
HYDRAULIC MEDIUM : DOT 4 BASED BRAKE FLUID IN ACCORDANCE WITH SAE J 1703  
PNEUMATIC MEDIUM : AIR
  - OIL VOLUME INPUT :  $V=(SH+C)K$   
K : ABSORPTION AT 120 BAR FOR C=0,  $K \leq 1,5\text{cm}^3$   
SH : HYDRAULIC SECTIONAL AREA =  $4.9\text{cm}^2$   
C : GEAR DISENGAGING STROKE
  - OPEN PORTS ARE FITTED WITH CLOSURE PLUG FOR STORAGE AND TRANSMIT PURPOSE
  - CAUTION : DO NOT ACTUATE THE DEVICE IF NOT FITTED ON ITS MOUNTING BRACKET
  - WITHOUT STROKE WEAR INDICATOR
  - DO NOT OPERATE THIS PRODUCT WITHOUT INSTALLATION OR FIXATION ON THE BRACKET

- NOTES**
- DEVICE EXTREME POSITION WHEN BLEEDING
  - MISALIGNMENT OF PUSHROD IN ANY DIRECTION
  - BOOT THERMAL RANGE  $-40^{\circ}\text{C}$  TO  $+130^{\circ}\text{C}$
  - GEAR DISENGAGING STROKE
  - POSITION TO NOTE (CLUTCH IN NEW CONDITION)
  - STROKE
  - DONOT USE THE TUBE FOR LIFTING PLEASE LABEL TO BE PASTED HERE  
TORQUE FOR CONNECTION
  - 25Nm MAX
  - 34Nm MAX
  - 18Nm MAX
  - $5^{\circ}$  Nm
  - $10^{\circ}$  Nm



General Specification: ISO 8768, ISO 8769, ISO 10471, Size (S1) 14105 LP		Copyright ©		<b>Provia</b>	
Further Technical Data: PRO 411 037 0		Date: 2023-11-07		CLUTCH SERVO	
Doc. Code: 035		Sheet: 1 To 15		Rev: 0	
General Tolerances: ISO 2013		2023-11-07		KAWAYO	
Range of Nominal Dimensions (d in mm)		2023-11-08		Mankoman	
Class	h	H	f	g	js
Fine	±0.05	±0.10	±0.15	±0.2	±0.3
Medium	±0.1	±0.2	±0.3	±0.4	±0.5
Coarse	±0.2	±0.3	±0.5	±0.6	±0.8
Tapped holes acc.:		2.6		NTS	
Tolerance: Hole: Apparent (Draughtsmen)		A 0		CREO	
Date of first issue: 2023-11-08		Revision: 005		EN 1/1	
Doc. Code: Language: Sheet:		PRO 411 037 0		5630 AM	