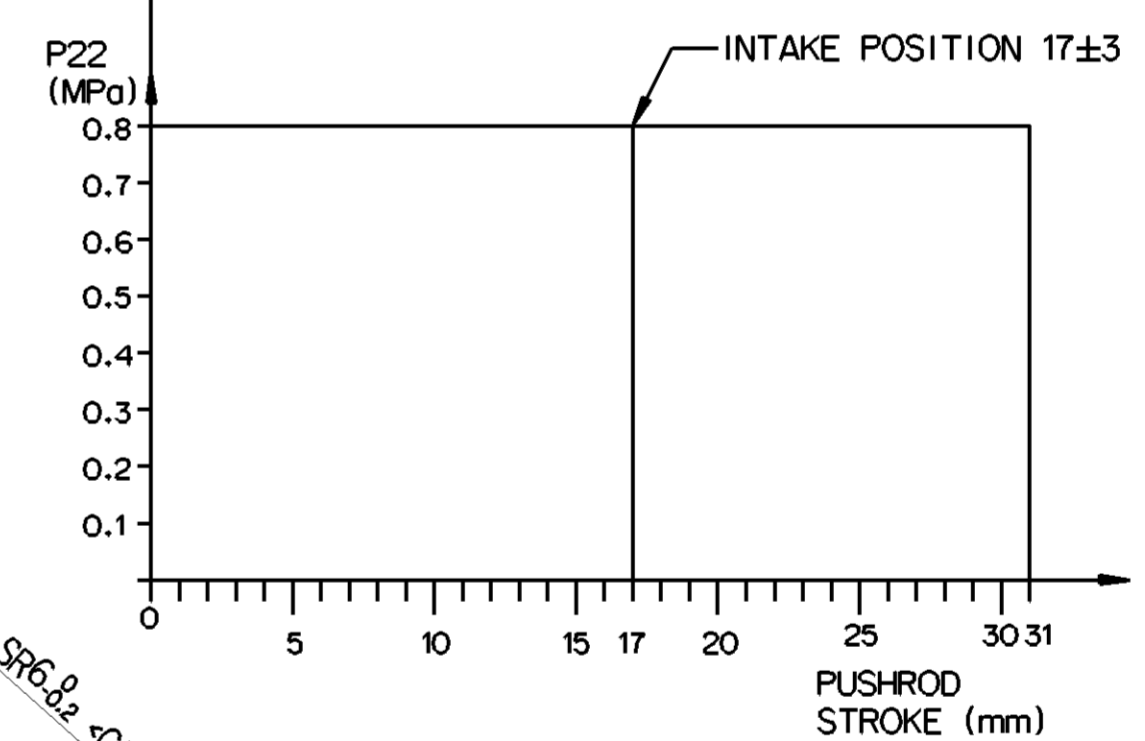
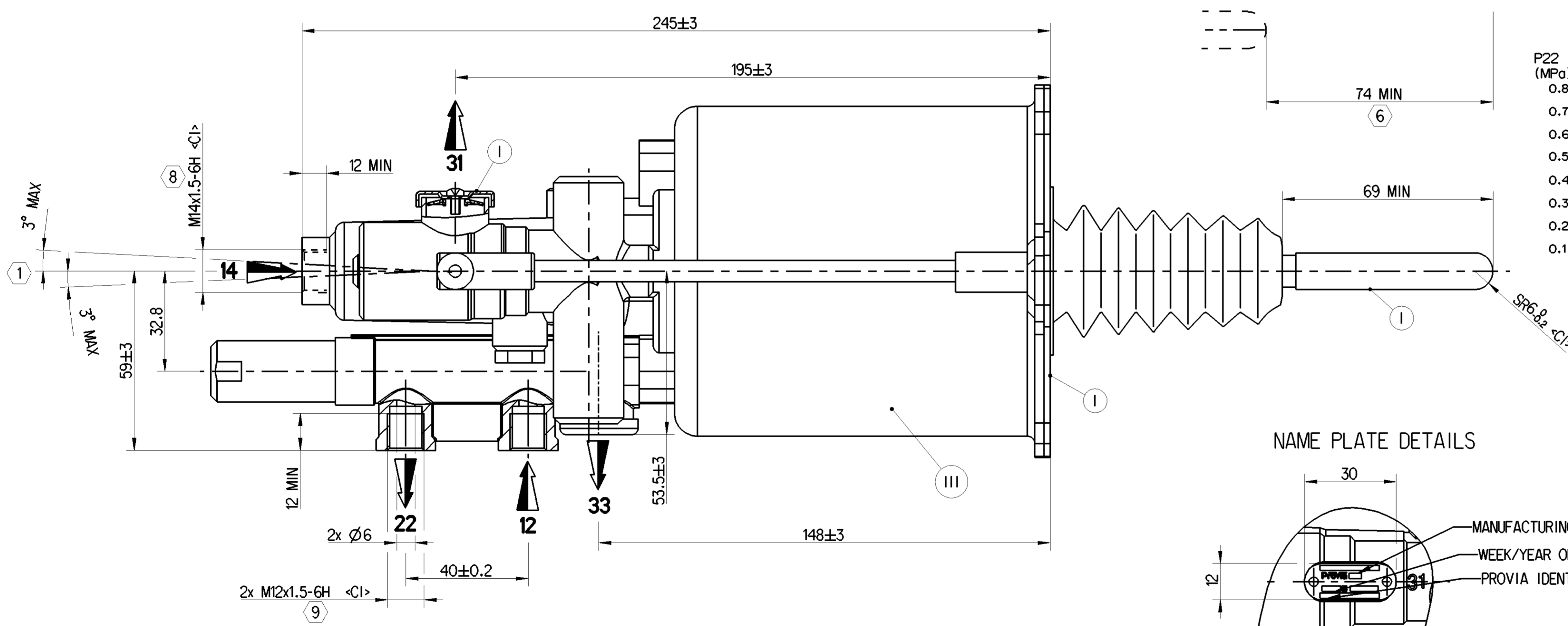
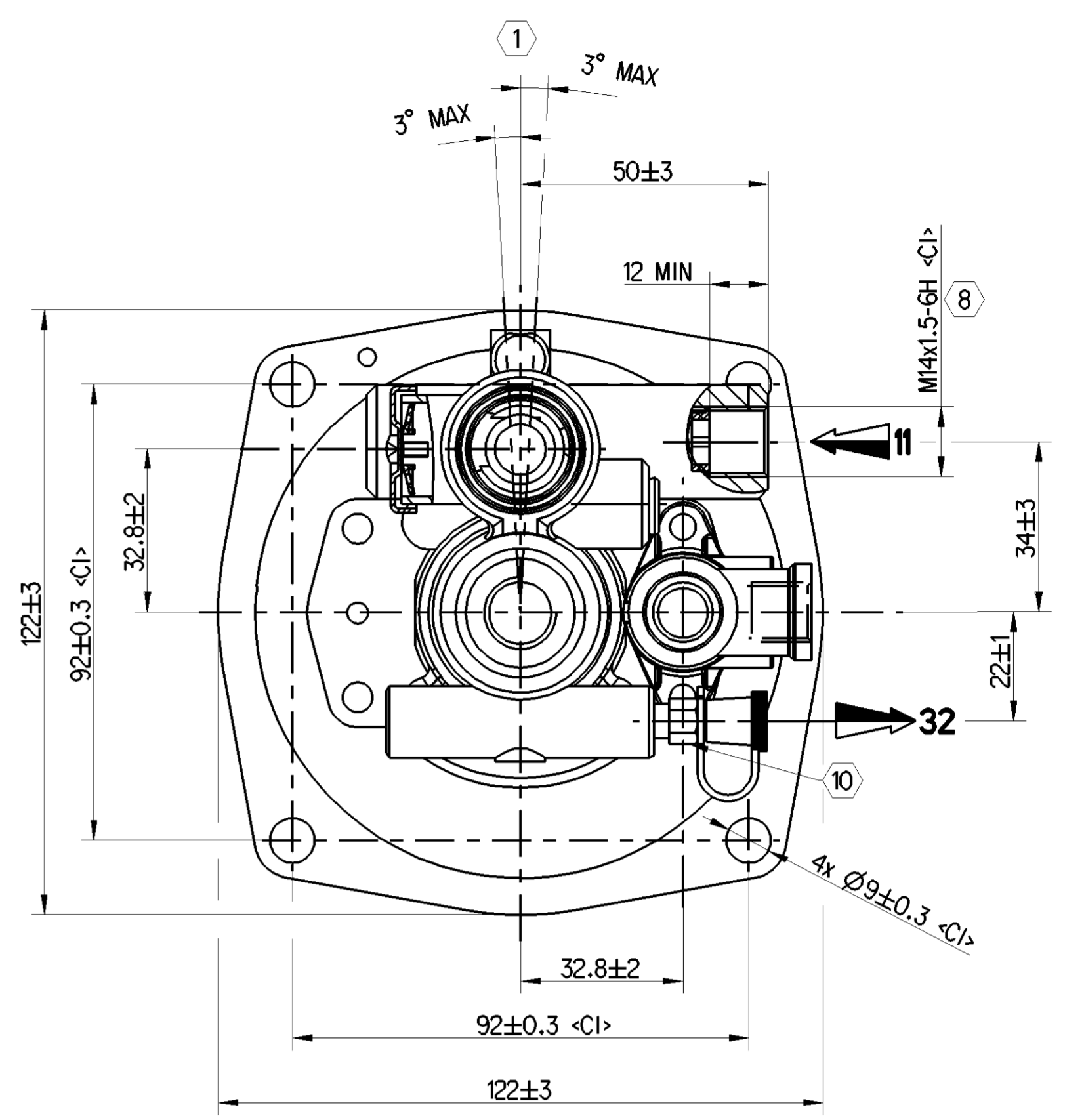
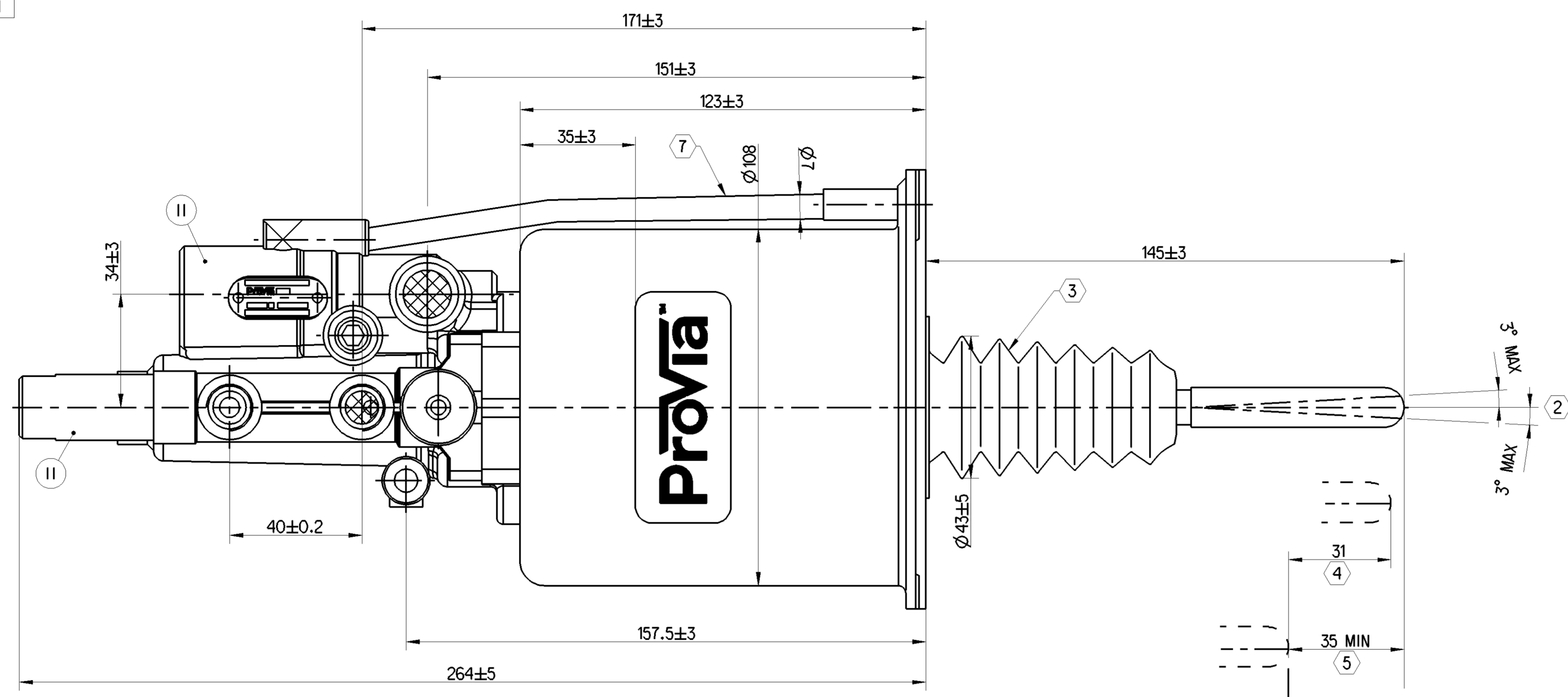


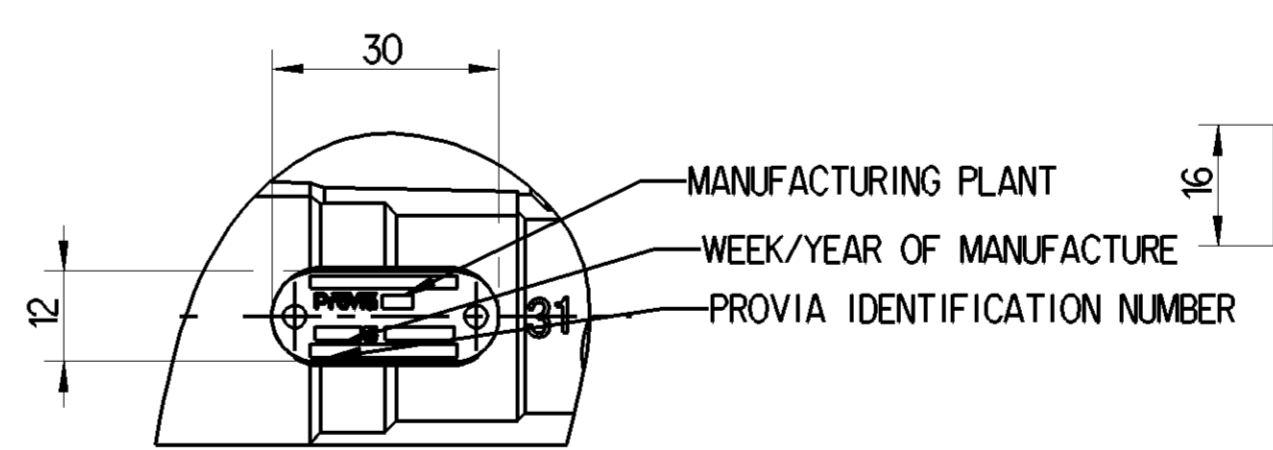
III	STEEL	ELECTROPHORESIS
II	ALUMINIUM ALLOY	PASSIVATION TREATMENT
I	STEEL	GALVANIZED (WHITE)
POS	MATERIAL	SURFACE PROTECTION

<1>	SAFETY CHARACTERISTICS	0
<2>	SIGNIFICANT CHARACTERISTICS	0
<C1>	CUSTOMER INTERFACE	8

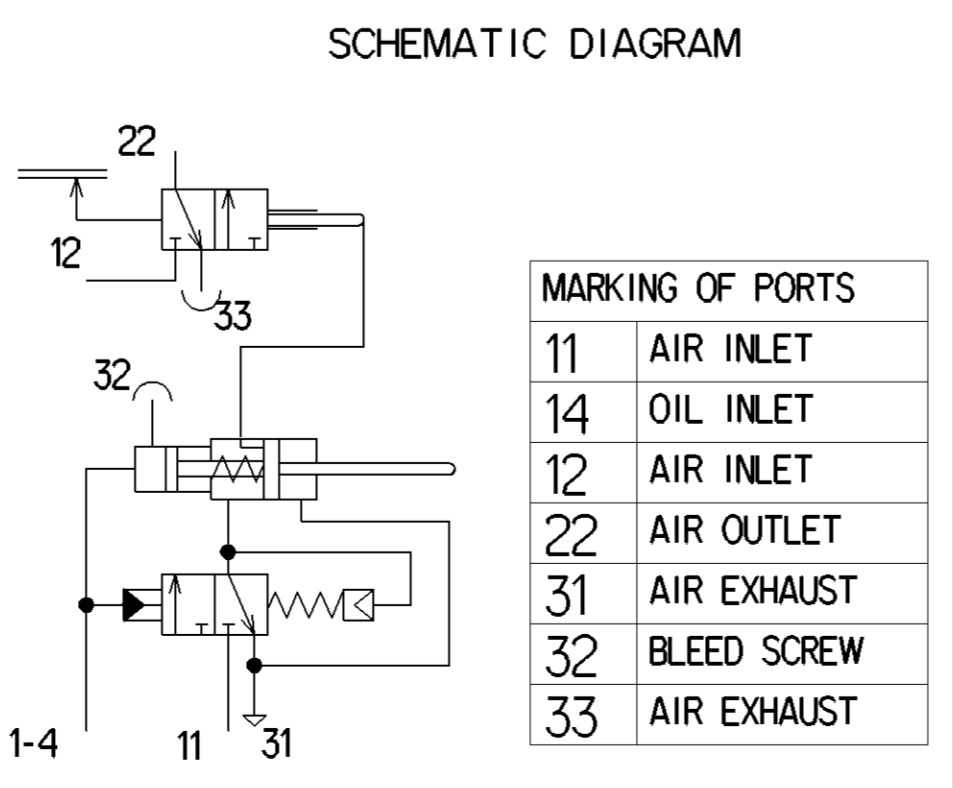
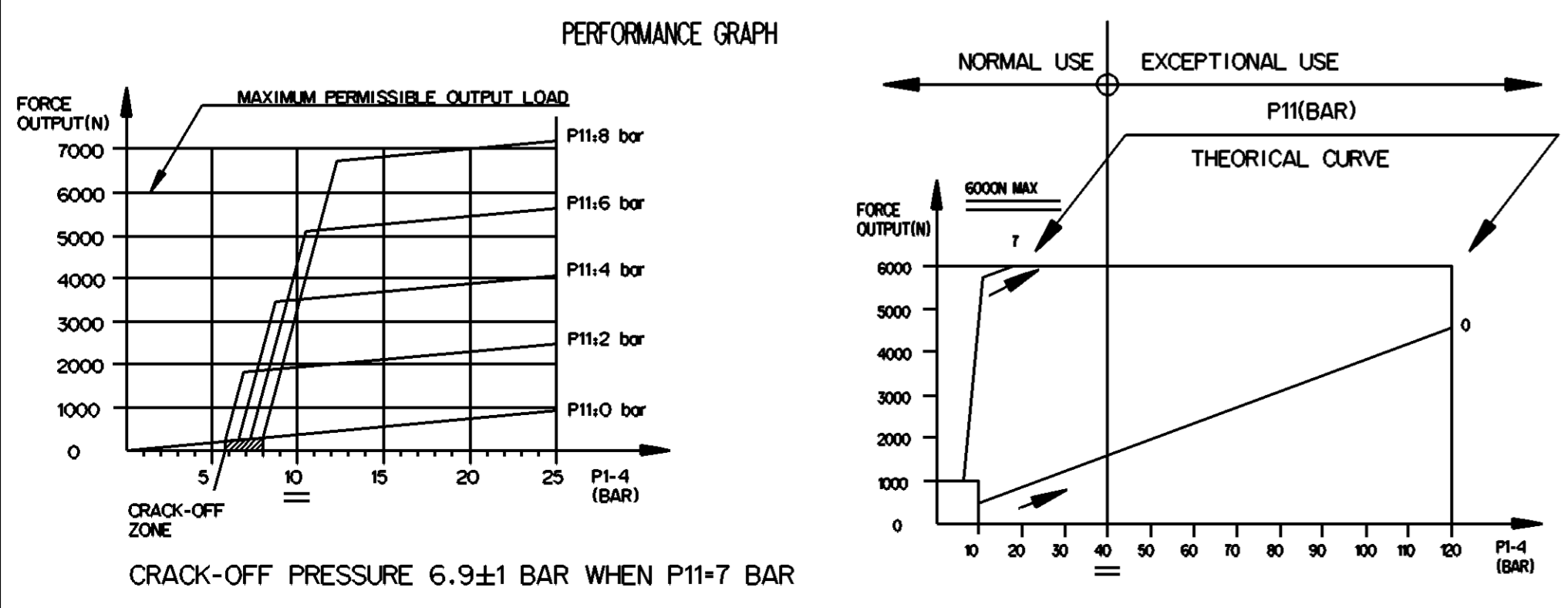


- TECHNICAL INFORMATION**
- HYDRAULIC TANK DIA : $\varnothing 22\text{mm}$
 - AIR TANK DIA : $\varnothing 102\text{mm}$
 - HYDRAULIC WORKING PRESSURE 4MPa
 - HYDRAULIC WORKING PRESSURE MAX 12MPa
 - AIR WORKING PRESSURE MAX 1MPa
 - WORKING TEMPERATURE : -40°C TO $+80^{\circ}\text{C}$
 - MEDIUM
HYDRAULIC MEDIUM : DOT 4 BASED BRAKE FLUID IN ACCORDANCE WITH SAE J 1703
PNEUMATIC MEDIUM : AIR
 - OIL VOLUME INPUT: $V=(SH+C)+K$
K : ABSORPTION AT 120 BAR FOR $C=0, K=1.5\text{cm}^3$
SH : HYDRAULIC SECTIONAL AREA = 3.8 cm^2
C : GEAR DISENGAGING STROKE
 - OPEN PORTS ARE FITTED WITH CLOSURE PLUG FOR STORAGE AND TRANSMIT PURPOSE
 - CAUTION : DO NOT ACTUATE THE DEVICE IF NOT FITTED ON ITS MOUNTING BRACKET
 - WITHOUT STROKE WEAR INDICATOR
 - DO NOT OPERATE THIS PRODUCT WITHOUT INSTALLATION OR FIXATION ON THE BRACKET

NAME PLATE DETAILS

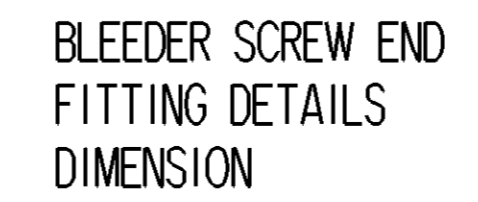


LABEL CONTENT
100
Do not use tube for lifting please label to be pasted here



MARKING OF PORTS

11	AIR INLET
14	OIL INLET
12	AIR INLET
22	AIR OUTLET
31	AIR EXHAUST
32	BLEED SCREW
33	AIR EXHAUST



- NOTES**
- DEVICE EXTREME POSITION WHEN BLEEDING
 - MISALIGNMENT OF PUSHROD IN ANY DIRECTION
 - BOOT THERMAL RANGE -40°C TO $+130^{\circ}\text{C}$
 - GEAR DISENGAGING STROKE
 - POSITION TO NOTE (CLUTCH IN NEW CONDITION)
 - STROKE
 - DONT USE THE TUBE FOR LIFTING PLEASE LABEL TO BE PASTED HERE
- TORQUE FOR CONNECTION**
- 25Nm MAX
 - 18Nm MAX
 - 5_0^5 Nm

General Specifications: ISO 8015, JED-334-1, Size ISO 14405 LP		Copyright ZF*		
Further Technical Data: PRO 411 039 0		Date	Signature	
Doc. Code: 035	Sheet: 1 To 13	2023-11-07	Kariya	
General Tolerances JED-261		Checked	Manivannan	
Range of Nominal Dimensions (± mm)		Dimensions in mm		
Class	1) ≤ 50	2) > 50 < 180	3) > 180 < 400	4) > 400
Fine	±0.5	±1	±1.5	±2
Medium	±1	±2	±3	±4
Coarse	±2	±3.5	±5	±6.5
Tapped Holes acc. -		Material No.		
1) Tolerance Class Applied Crossmarked		2.6 kg	NTS	
		Size	CAD System	
		A 1	CREO	
		Date of first issue: 2023-11-07		
		Doc. Code Language Sheet		
		PRO 411 039 0 005 EN 1/1		
		Ech-No. Revision Tech. Resp. Replacement for		
		5630_AM		