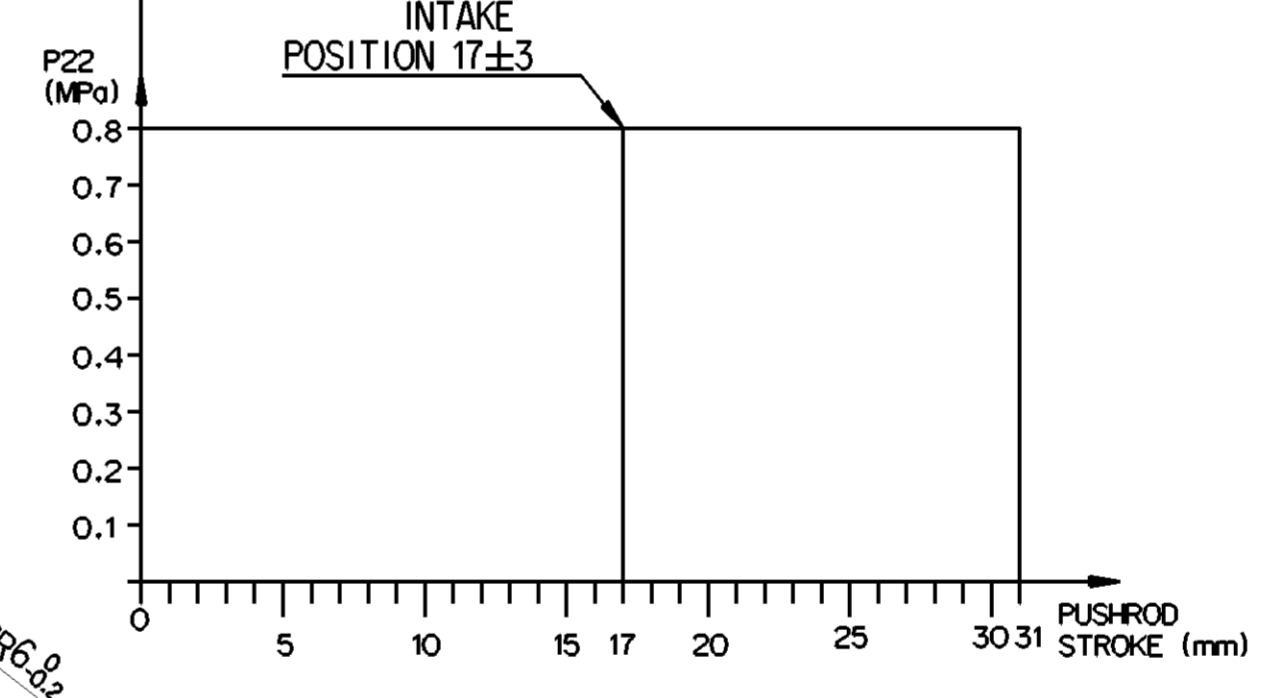
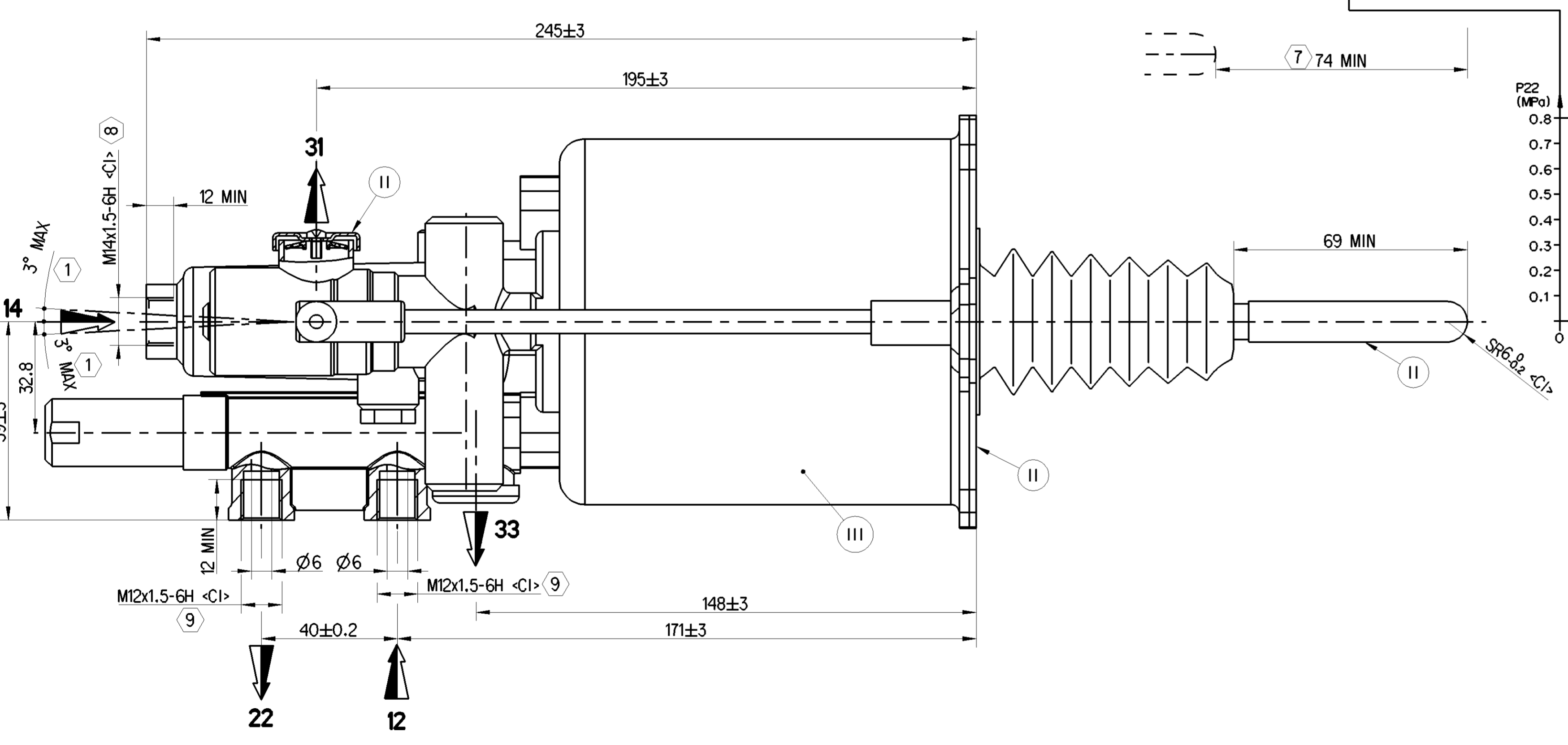
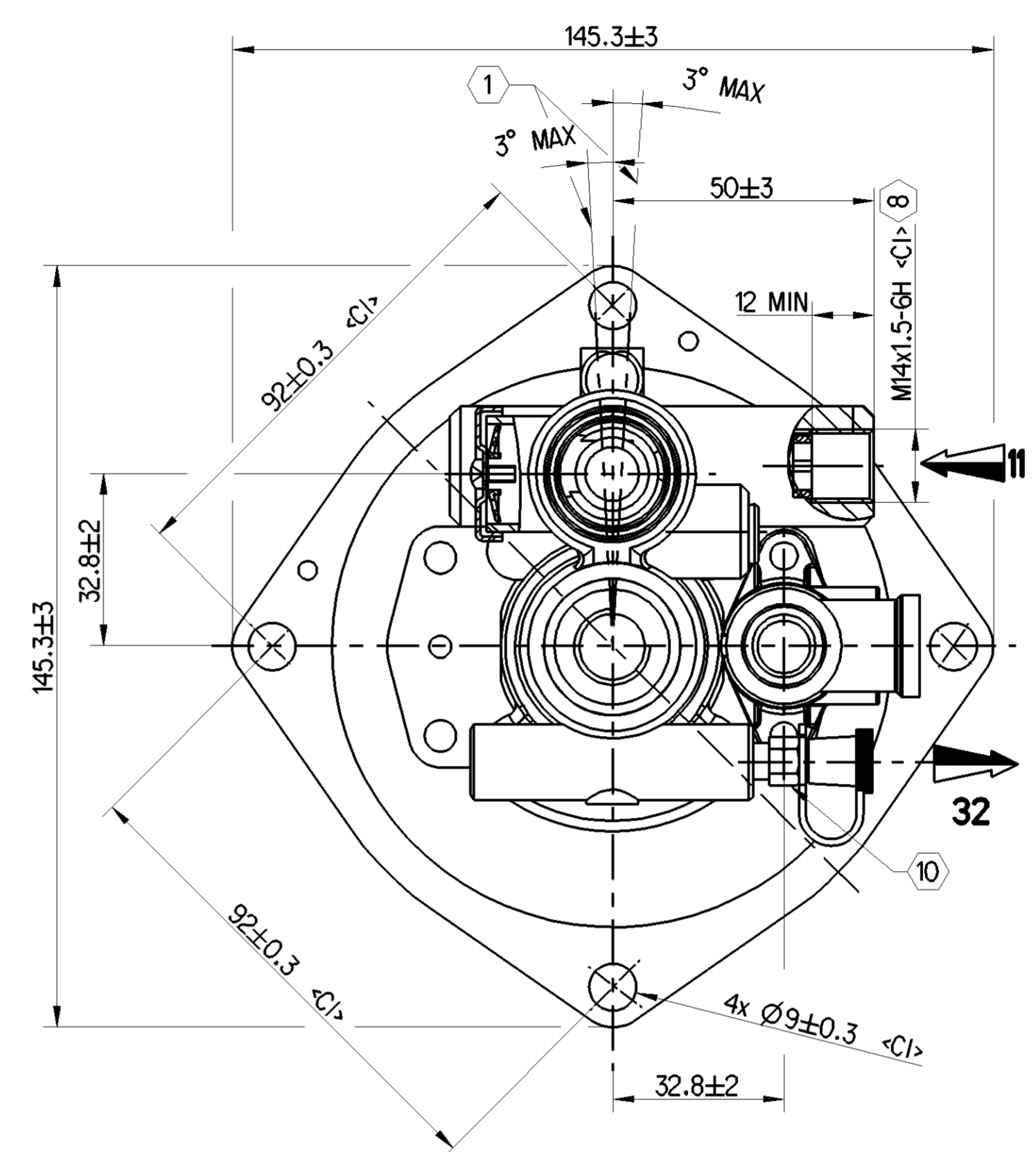
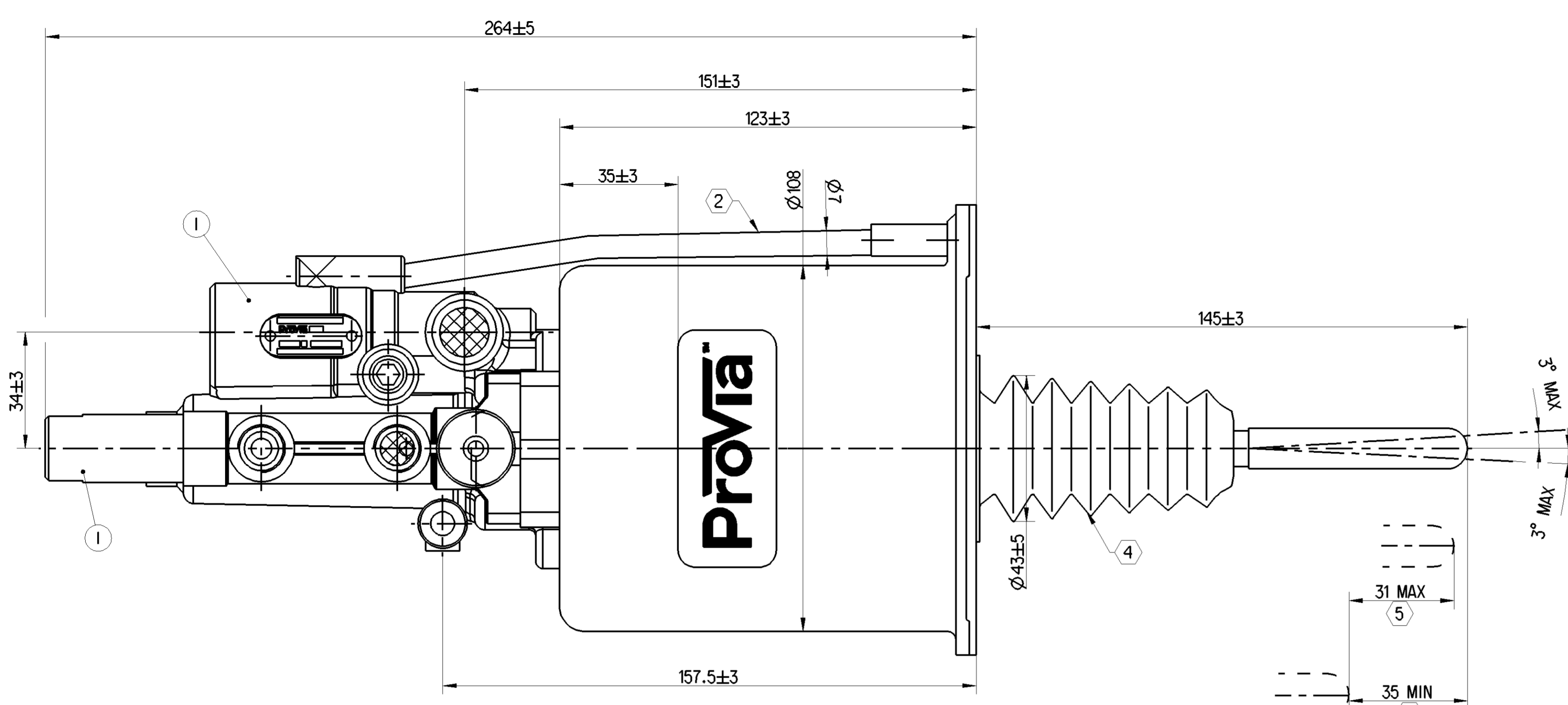


III	STEEL	ELECTROPHORESIS
II	STEEL	GALVANIZED (WHITE)
I	ALUMINIUM	PASSIVATION TREATMENT
POS	MATERIAL	SURFACE PROTECTION

<1>	SAFETY CHARACTERISTICS	0
<2>	SIGNIFICANT CHARACTERISTICS	0
<C1>	CUSTOMER INTERFACE	8

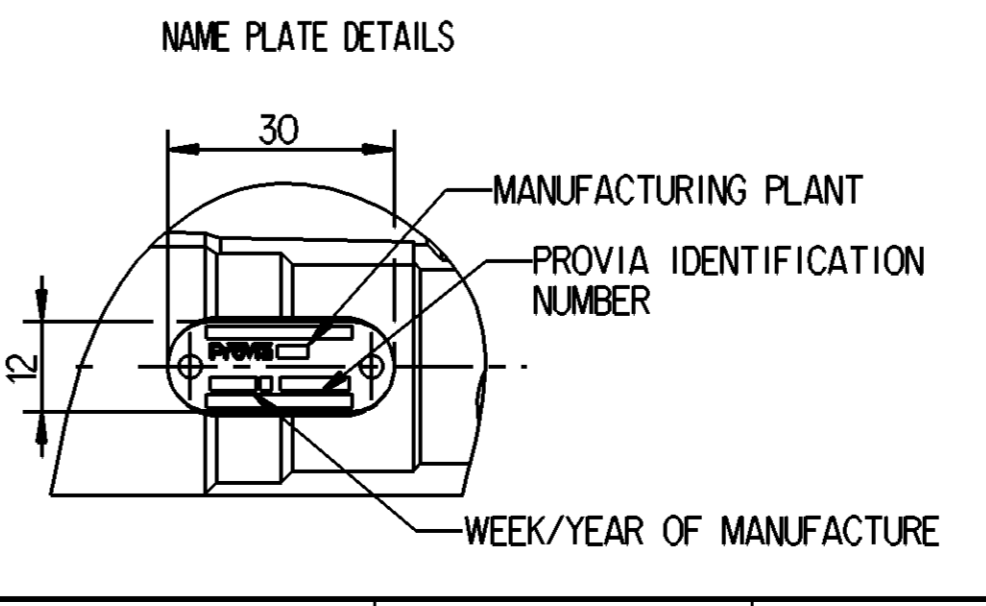
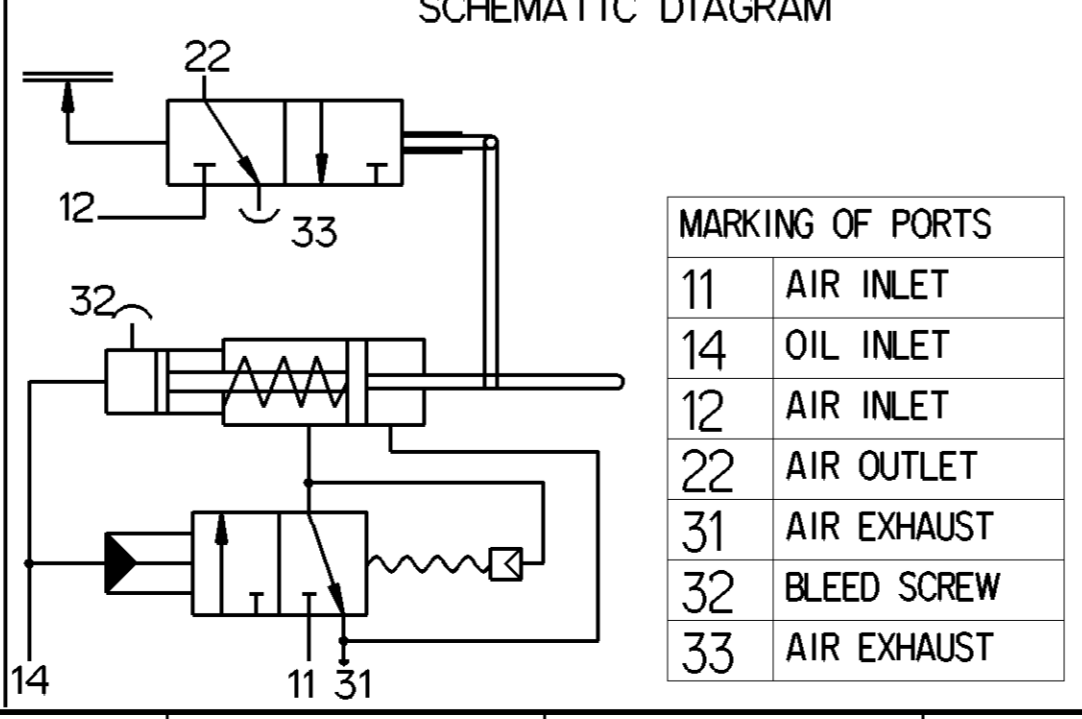
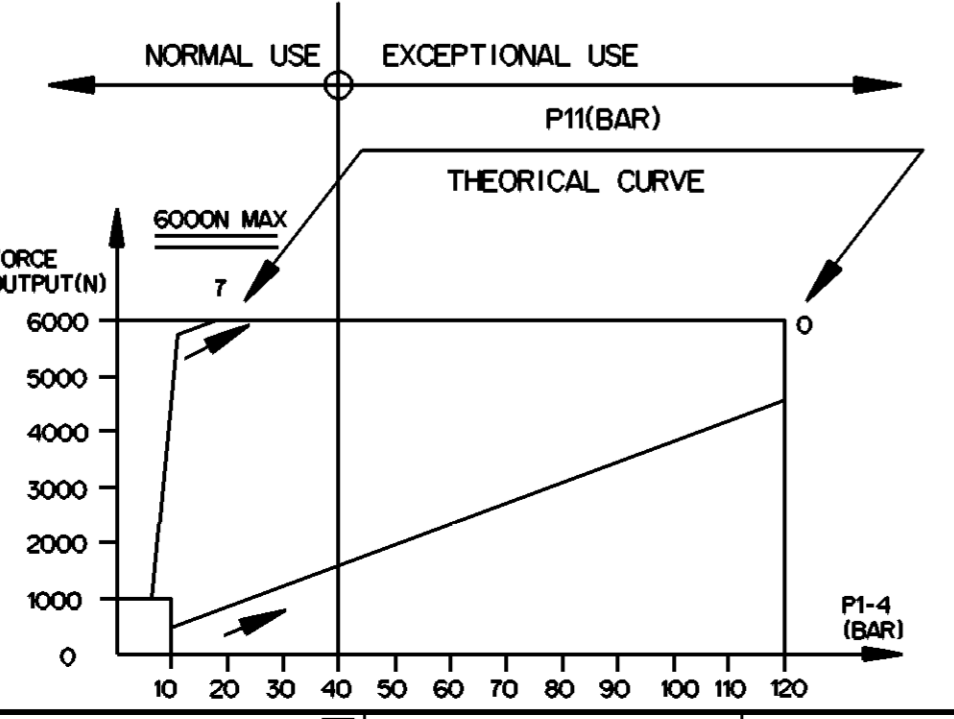
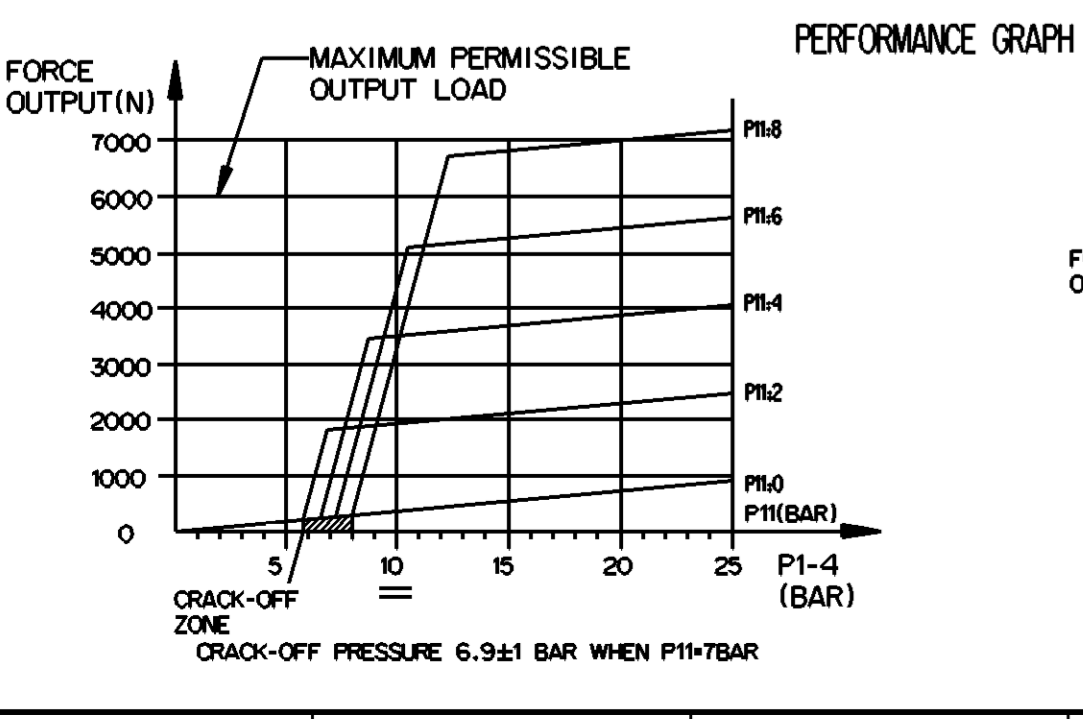
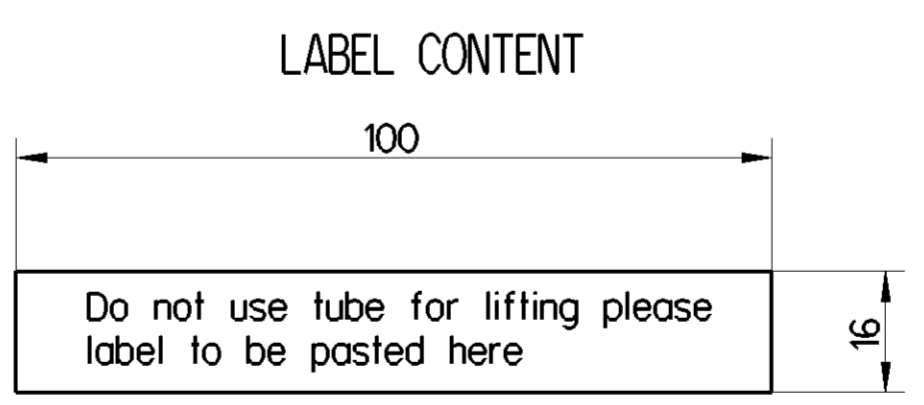
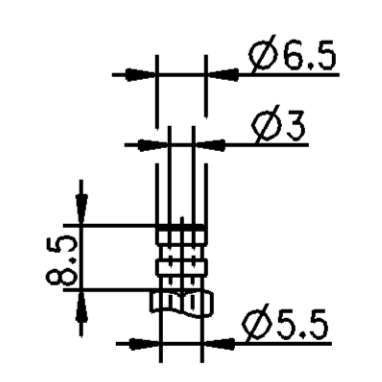
TECHNICAL INFORMATION

- HYDRAULIC TANK DIA : $\varnothing 22\text{mm}$
- AIR TANK DIA : $\varnothing 102\text{mm}$
- HYDRAULIC WORKING PRESSURE 4MPa
- HYDRAULIC WORKING PRESSURE MAX 12MPa
- AIR WORKING PRESSURE MAX 1MPa
- WORKING TEMPERATURE : -40°C TO $+80^{\circ}\text{C}$
- MEDIUM
HYDRAULIC MEDIUM : DOT 4 BASED BRAKE FLUID IN ACCORDANCE WITH SAE J 1703
PNEUMATIC MEDIUM : AIR
- OIL VOLUME INPUT: $V=(SH \times C) \times K$
K : ABSORPTION AT 120 BAR FOR C=0 , $K < 1.5\text{cm}^3$
SH : HYDRAULIC SECTIONAL AREA = 3.8cm^2
C : GEAR DISENGAGING STROKE
- OPEN PORTS ARE FITTED WITH CLOSURE PLUG FOR STORAGE AND TRANSMIT PURPOSE
- CAUTION : DO NOT ACTUATE THE DEVICE IF NOT FITTED ON ITS MOUNTING BRACKET
- WITHOUT STROKE WEAR INDICATOR
- DO NOT OPERATE THIS PRODUCT WITHOUT INSTALLATION OR FIXATION ON THE BRACKET



- NOTES
- DEVICE EXTREME POSITION WHEN BLEEDING
 - DO NOT USE TUBE FOR LIFTING PLEASE LABEL TO BE PASTED HERE
 - MISALIGNMENT OF PUSHROD IN ANY DIRECTION
 - BOOT THERMAL RANGE -40°C TO $+130^{\circ}\text{C}$
 - GEAR DISENGAGING STROKE
 - POSITION TO NOTE (CLUTCH IN NEW CONDITION)
 - STROKE
- TORQUE FOR CONNECTION
- 25Nm MAX
 - 18Nm MAX
 - 5_0^5 Nm

BLEEDER SCREW END FITTING DETAILS DIMENSION



General Specifications: ISO 8015, JED-334-1, Size ISO 14405 LP		Copyright ZF*		
Further Technical Data: PRO 411 041 0		Date	Signature	
Doc. Code: 035	Sheet: 1 To 13	2023-11-07	Kariya	
General Tolerances JED-261		Checked	Manivannan	
Range of Nominal Dimensions (± mm)		Dimensions in mm		
Class	1) ≤ 50	2) 50 > 180	3) 180 ≤ 400	4) > 400
Fine	±0.5	±1	±1.5	±2
Medium	X ±1	±2	±3	±4
Coarse	±2	±3.5	±5	±6.5
		±3°		
Mass	2.6 kg	Scale	NTS	
Size	A 1	CREO		
Material No.		Date of first issue	2023-11-07	
PRO 411 041 0		Doc.Code	005 EN 1/1	
Ech.No.		Revision	5630_AM	
Tapped Holes acc.		Replacement for		
1) Tolerance Class Applied Crossmarked				

Tutti i diritti sono riservati. È vietata espressamente la ristampa o l'uso non autorizzato senza permesso scritto dalla ZF. La ZF non è responsabile per danni di qualsiasi natura derivanti dall'uso non autorizzato di questo documento. È vietata espressamente la ristampa o l'uso non autorizzato senza permesso scritto dalla ZF. La ZF non è responsabile per danni di qualsiasi natura derivanti dall'uso non autorizzato di questo documento.