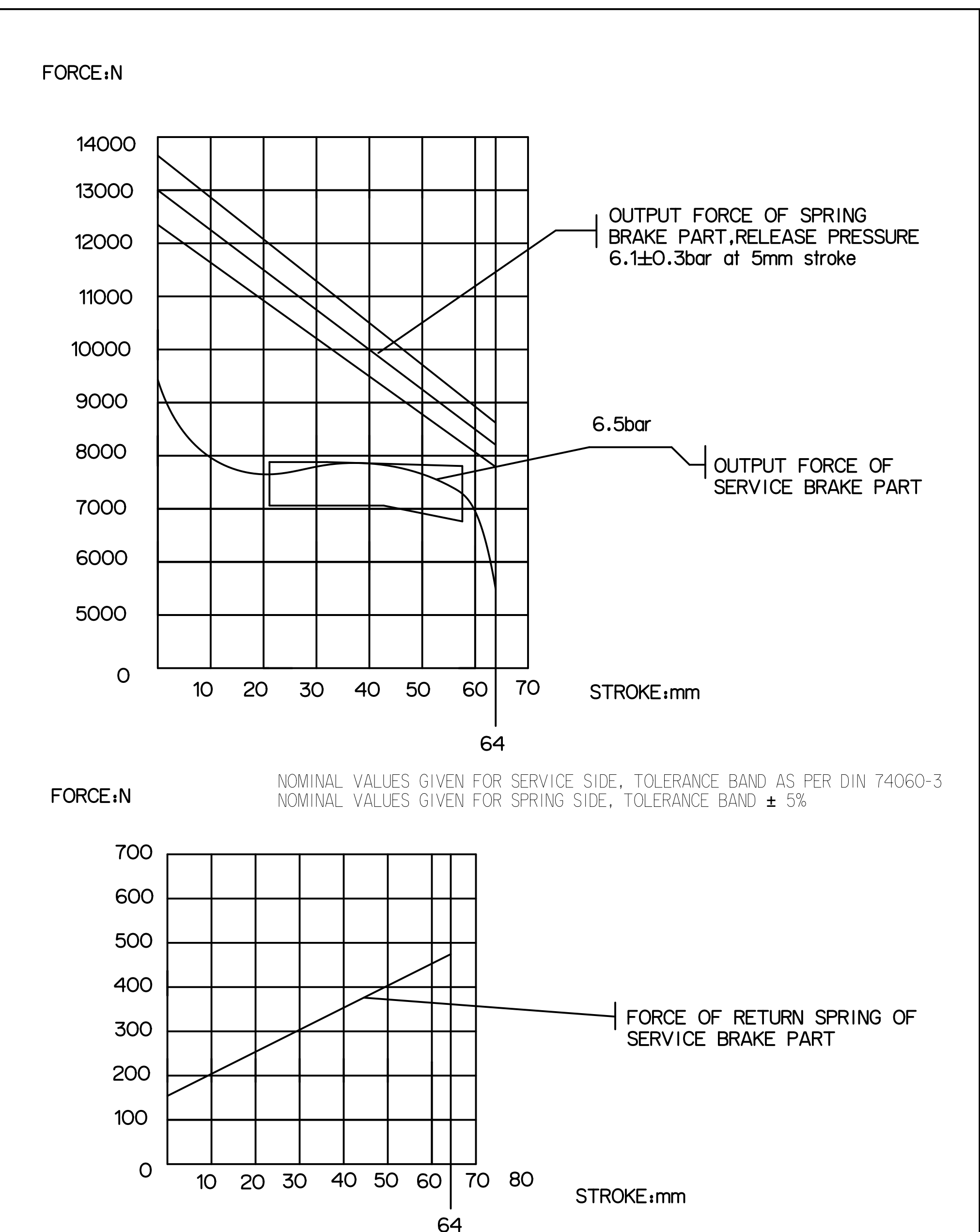
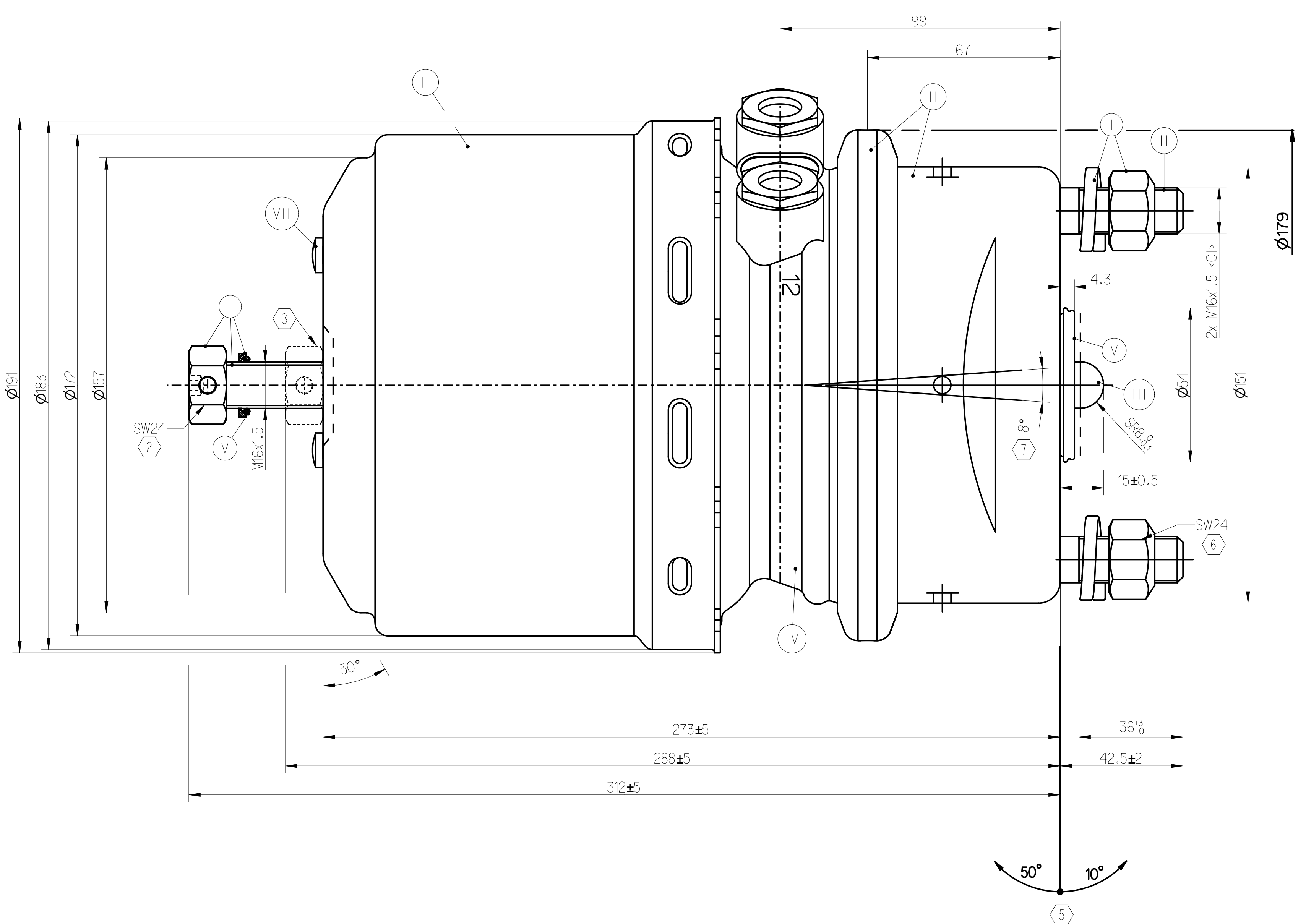
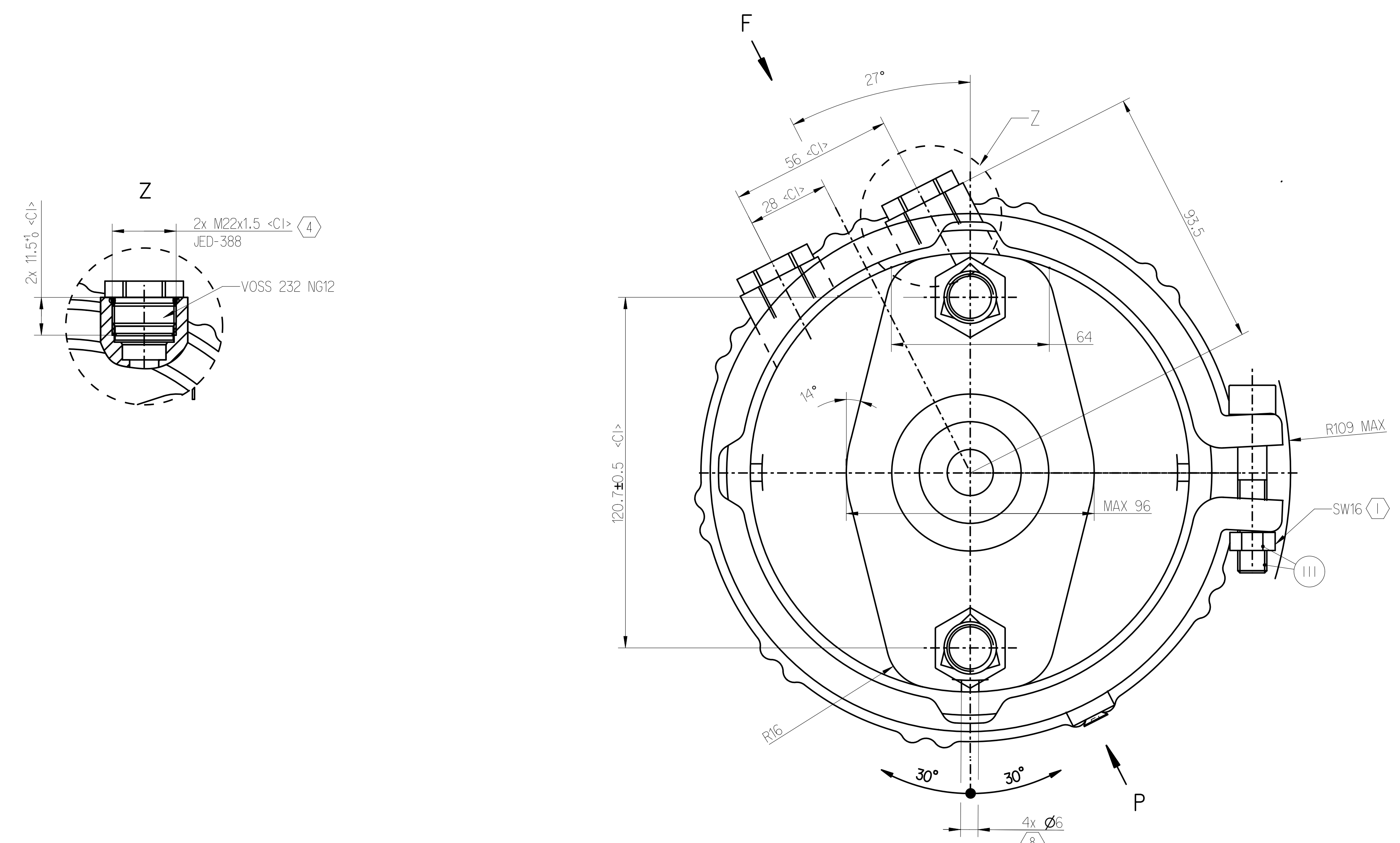


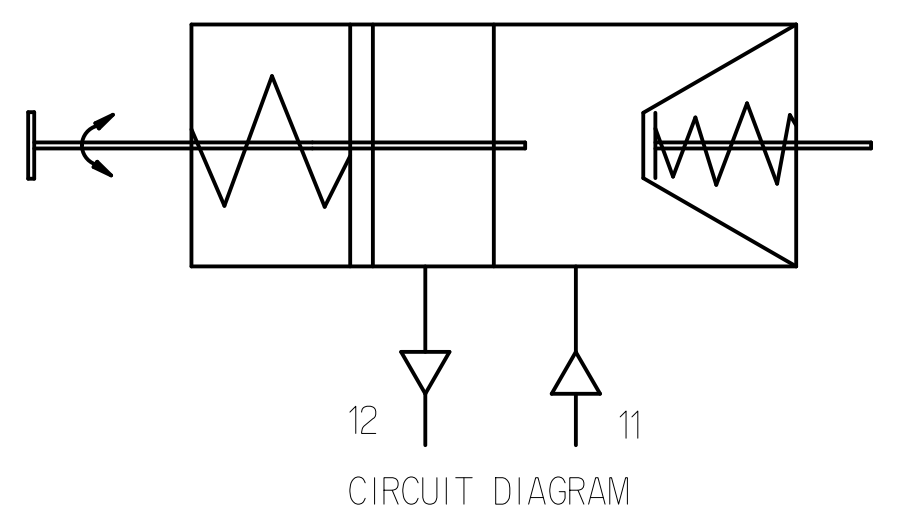
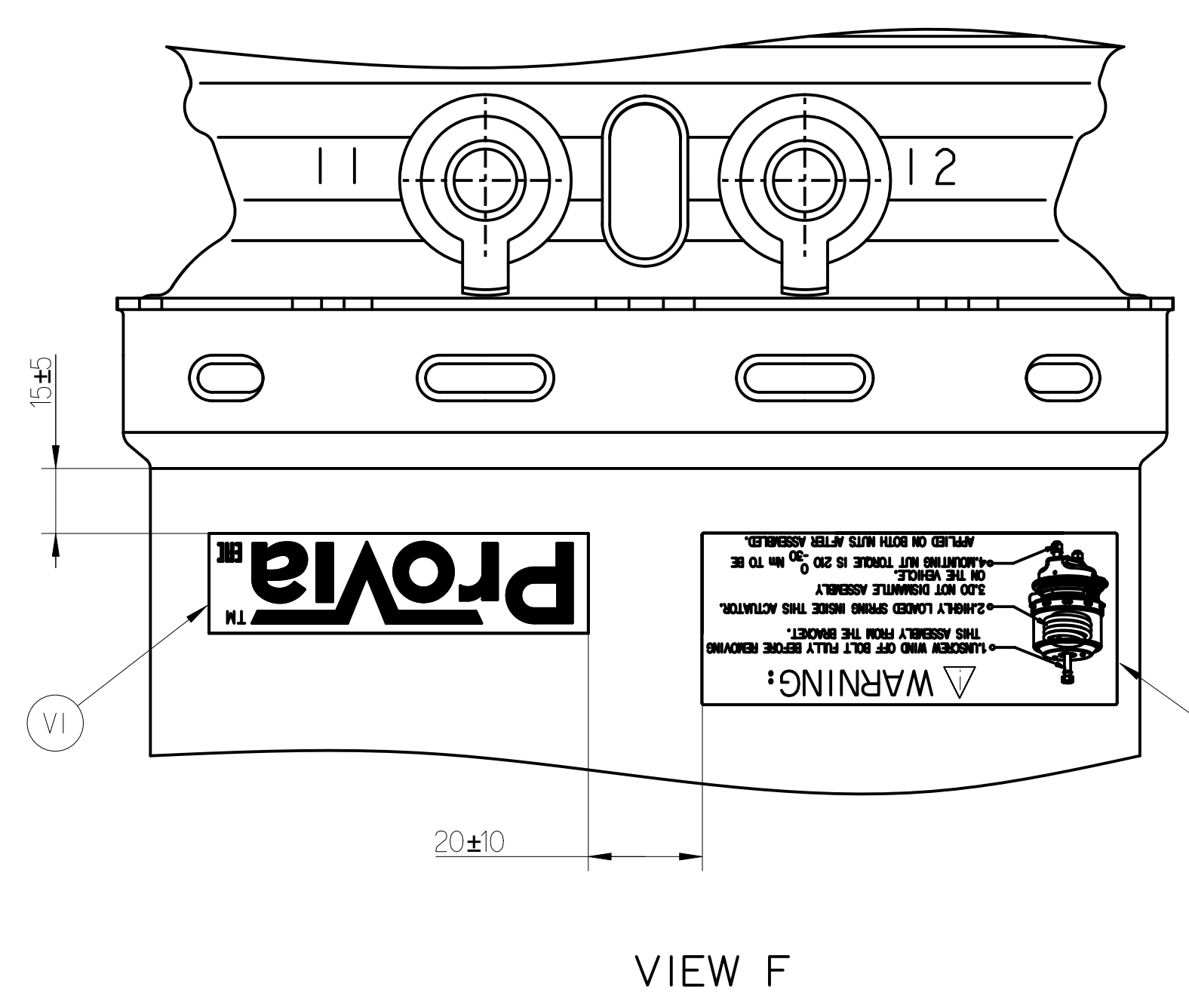
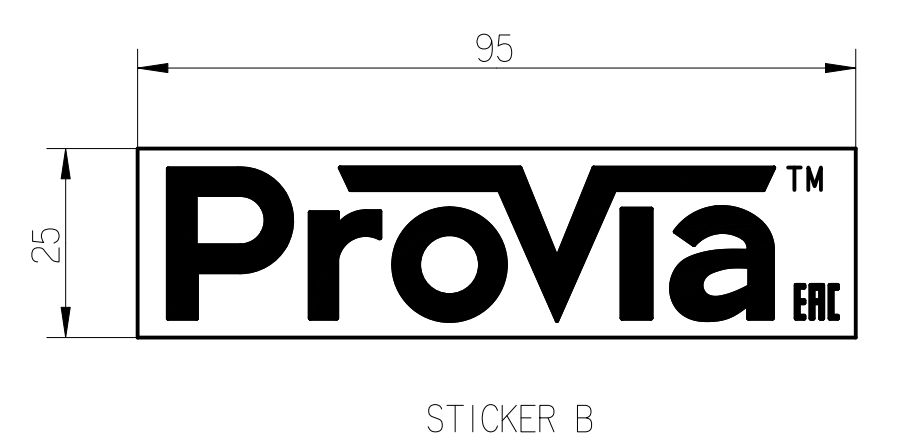
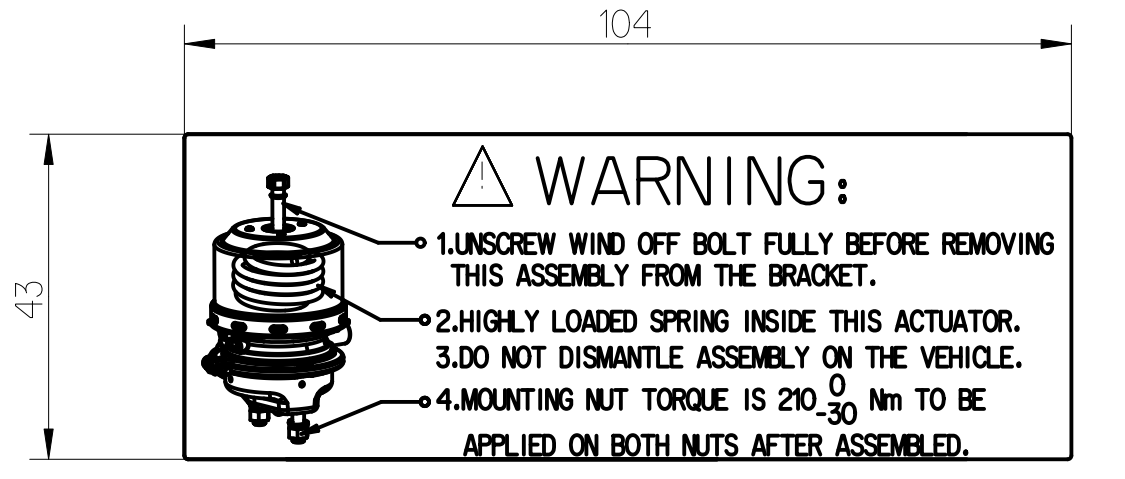
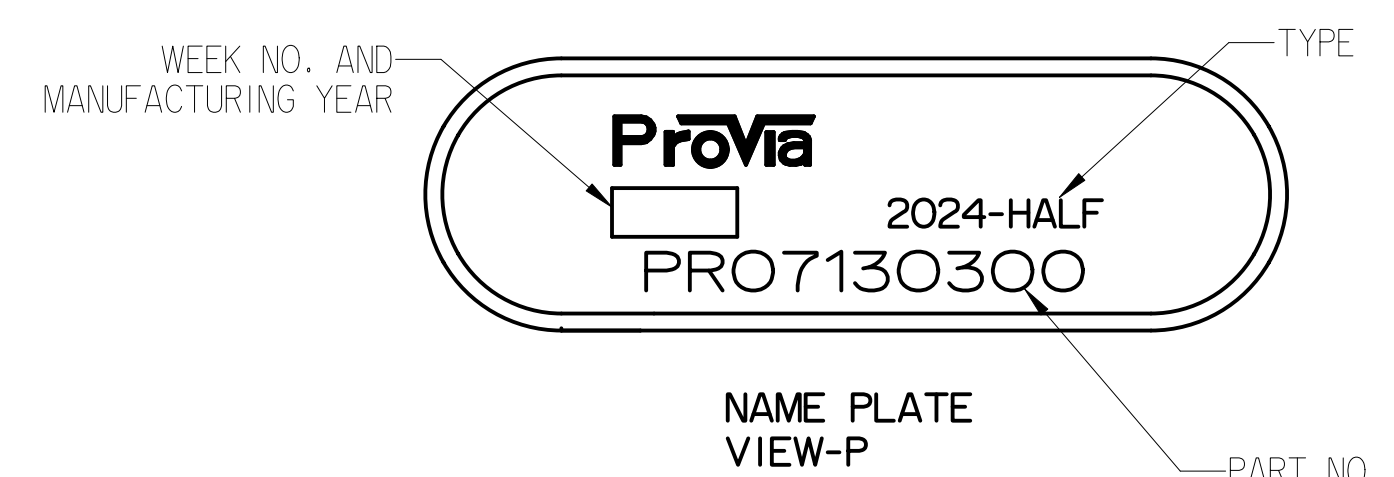
SURFACE PROTECTION	
I	ZINC PLATED WITH CR6+ FREE
II	ELECTRO-PAINTING
III	DACROMET
IV	SURFACE OXIDIZATION
V	RUBBER
VI	STICKERS
VII	BLACKENING

SAFETY CHARACTERISTICS	0
SIGNIFICANT CHARACTERISTICS	0
CUSTOMER INTERFACE	6



- ① TORQUE: ≥ 35 Nm
- ② RELEASE POSITION, RELEASING WITH: 80Nm MAX.
- ③ DRIVING POSITION, TIGHTENING WITH: $25 \frac{0}{-30}$ Nm
- ④ TORQUE: MAX. 34Nm
- ⑤ ADMISSIBLE INSTALLATION POSITION
- ⑥ TORQUE: $210 \frac{0}{-30}$ Nm
- ⑦ DEFLECTION: 8° MAX AT STROKE: 0 mm
- ⑧ TO BE INSTALLED WITH LOWER BREATHER HOLE OPEN

- TECHNICAL REQUIREMENT:**
1. STROKE:
SERVICE BRAKE: ≥ 64 mm
SPRING BRAKE: ≥ 64 mm;
 2. WORKING PRESSURE:
SERVICE CHAMBER: Pmax 10.2 bar, TEMPORARILY 13 bar;
PARKING CHAMBER: Pmax 6.5 bar, TEMPORARILY 11 bar.
 3. WORKING TEMPERATURE: -40°C...+80°C; (-40°F...+176°F)
 4. THE DRAWING IS AT CAGED CONDITION, THE PARKING CHAMBER WILL BE AT UNCAGED CONDITION DURING SHIPMENT.
 5. WORKING MEDIUM: AIR.



General Specification: ISO 8768, JED-388-1, Size ISO M400 LF		Copyright ©		ProVia	
Doc. Code: 030	Sheet: 1	Date: 2024-07-30	Drawn: Kaviya	TRISTOP - BRAKE ACTUATOR 20/24	
General Tolerances: JED-261		2024-07-30 Vargapresh		Date of first issue: 2020-03-31	
Range of Nominal Dimensions (in mm)		Dimensions in mm		Medium No.	
Class	1	2	3	4	5
Fine	± 0.03	± 0.02	± 0.15	± 0.2	± 0.3
Medium	± 0.1	± 0.2	± 0.3	± 0.4	± 0.5
Course	± 0.2	± 0.3	± 0.5	± 0.6	± 0.8
Tapped holes acc. JED-388		Medium		Date of first issue: 2020-03-31	
1) Tolerances class Applied chromed		A 0 CSED		005 EN 1/1	

GRAPHS FOR INFORMATION ONLY