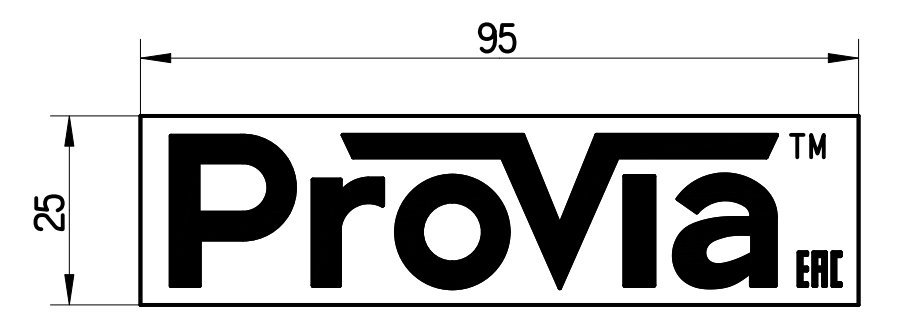
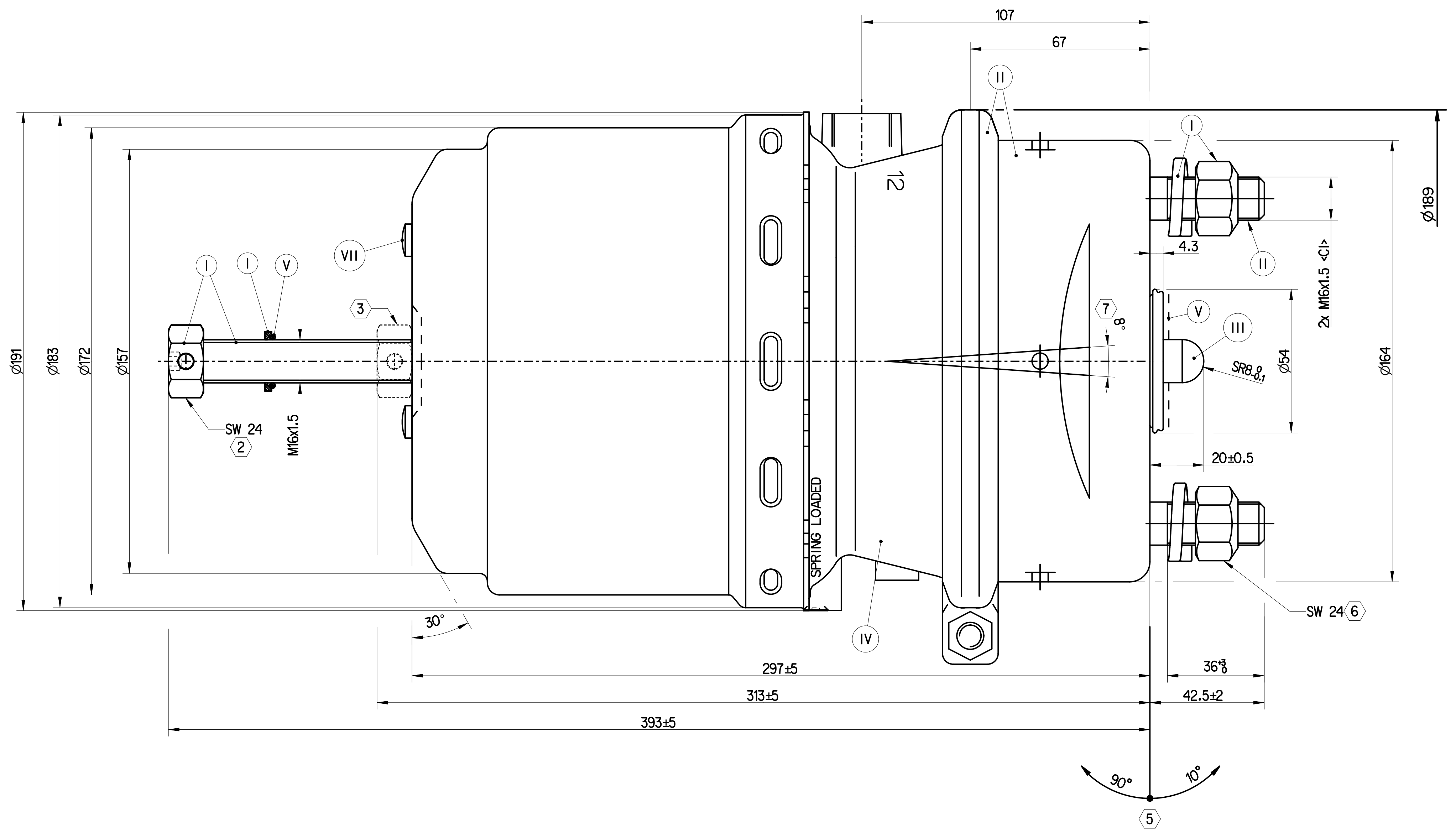
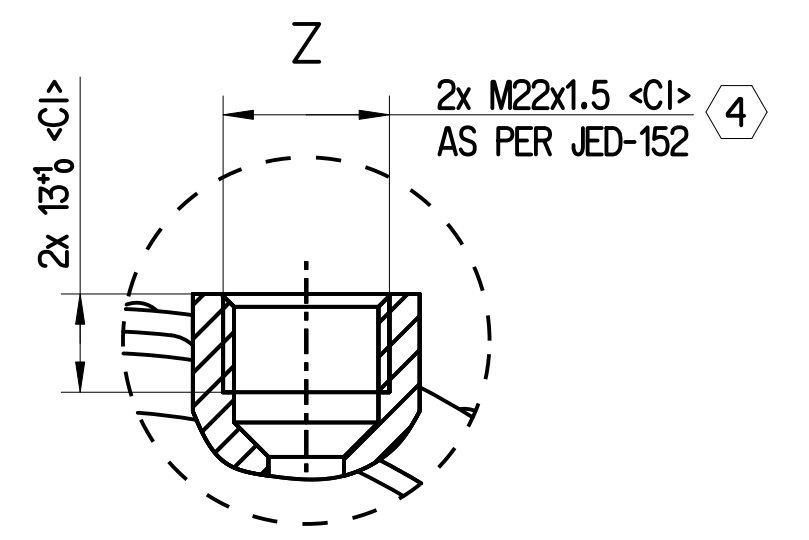
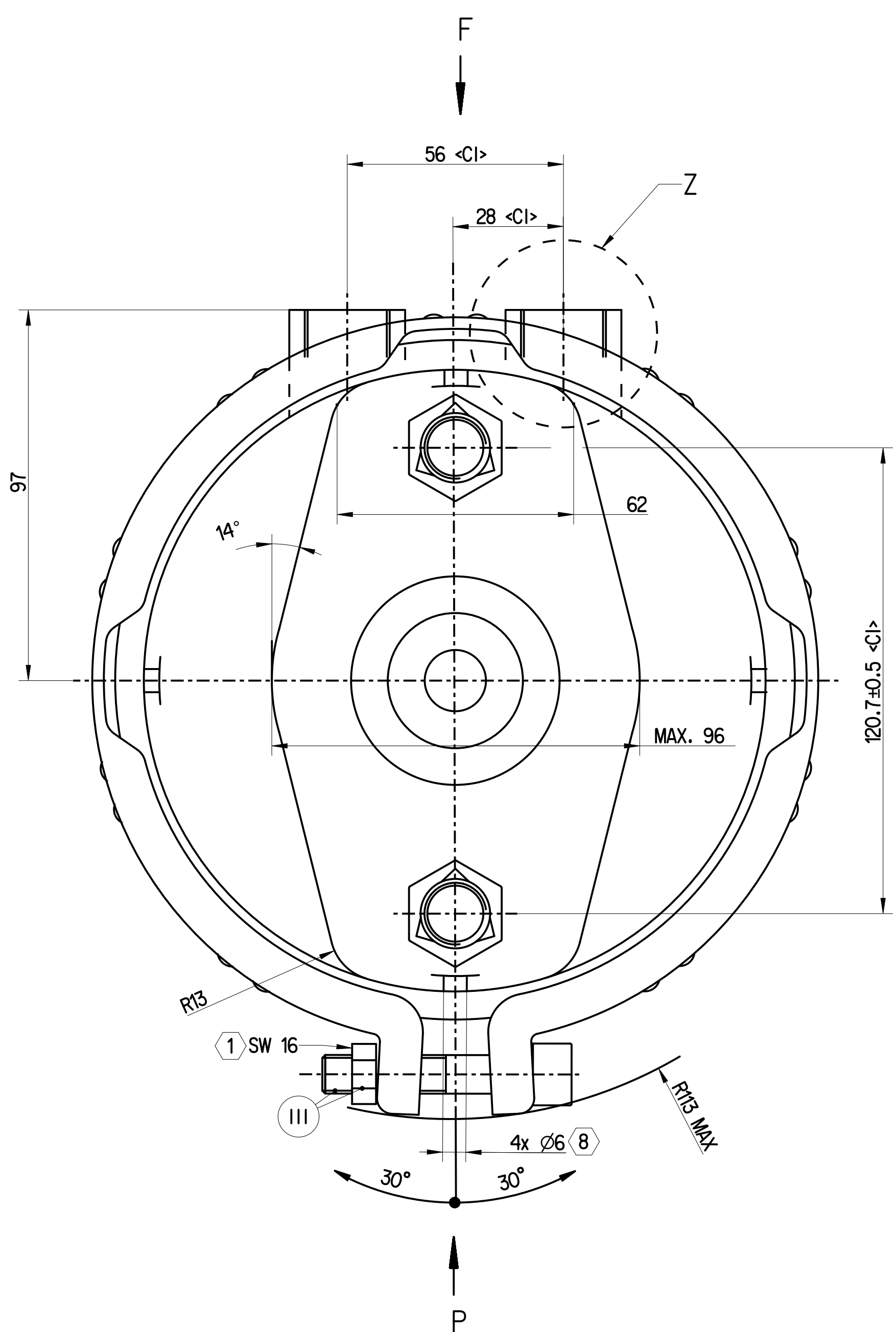
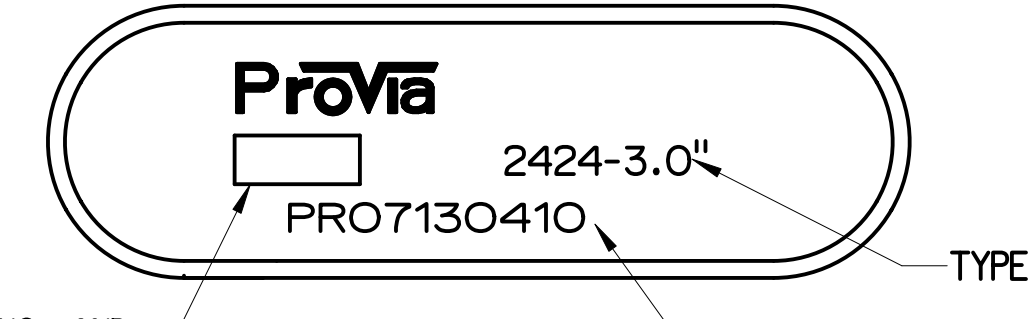


SURFACE PROTECTION	
I	ZINC PLATED WITH Cr6+ FREE
II	ELECTRO-PLATING
III	DACROMET
IV	SURFACE OXIDIZATION
V	RUBBER
VI	STICKERS
VII	BLACKENING

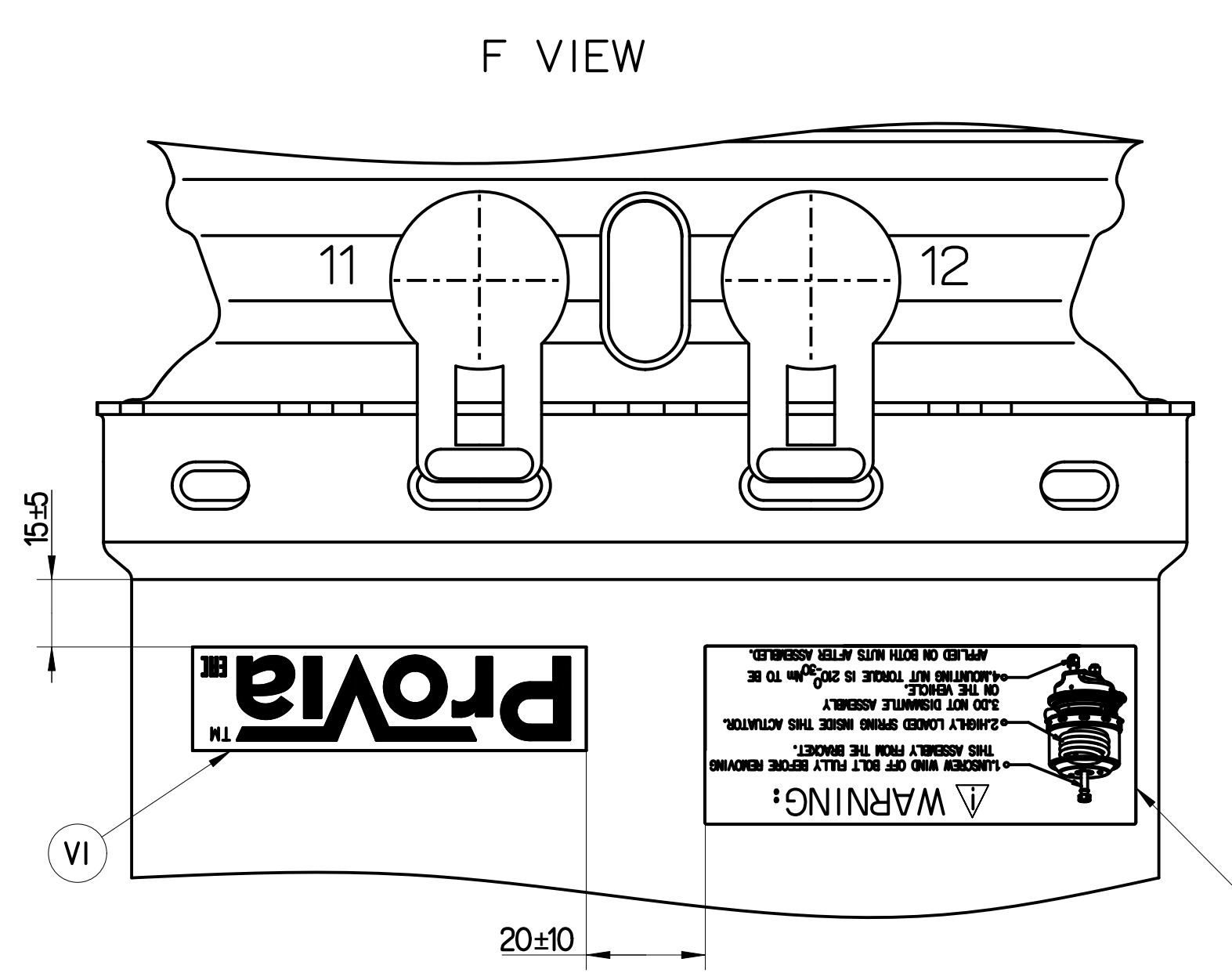
SAFETY CHARACTERISTICS	0
SIGNIFICANT CHARACTERISTICS	0
CUSTOMER INTERFACE	6



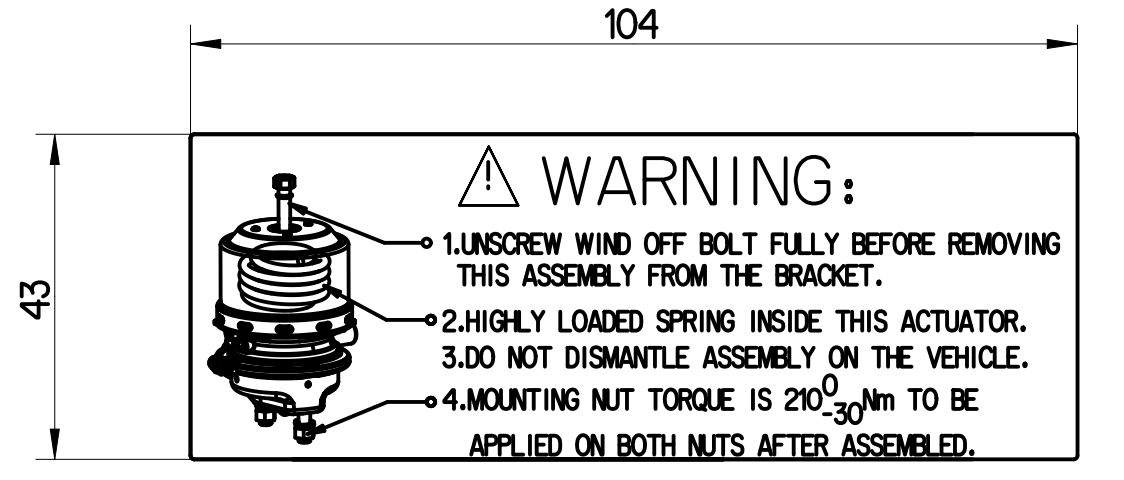
STICKER B VI



P VIEW NAME PLATE



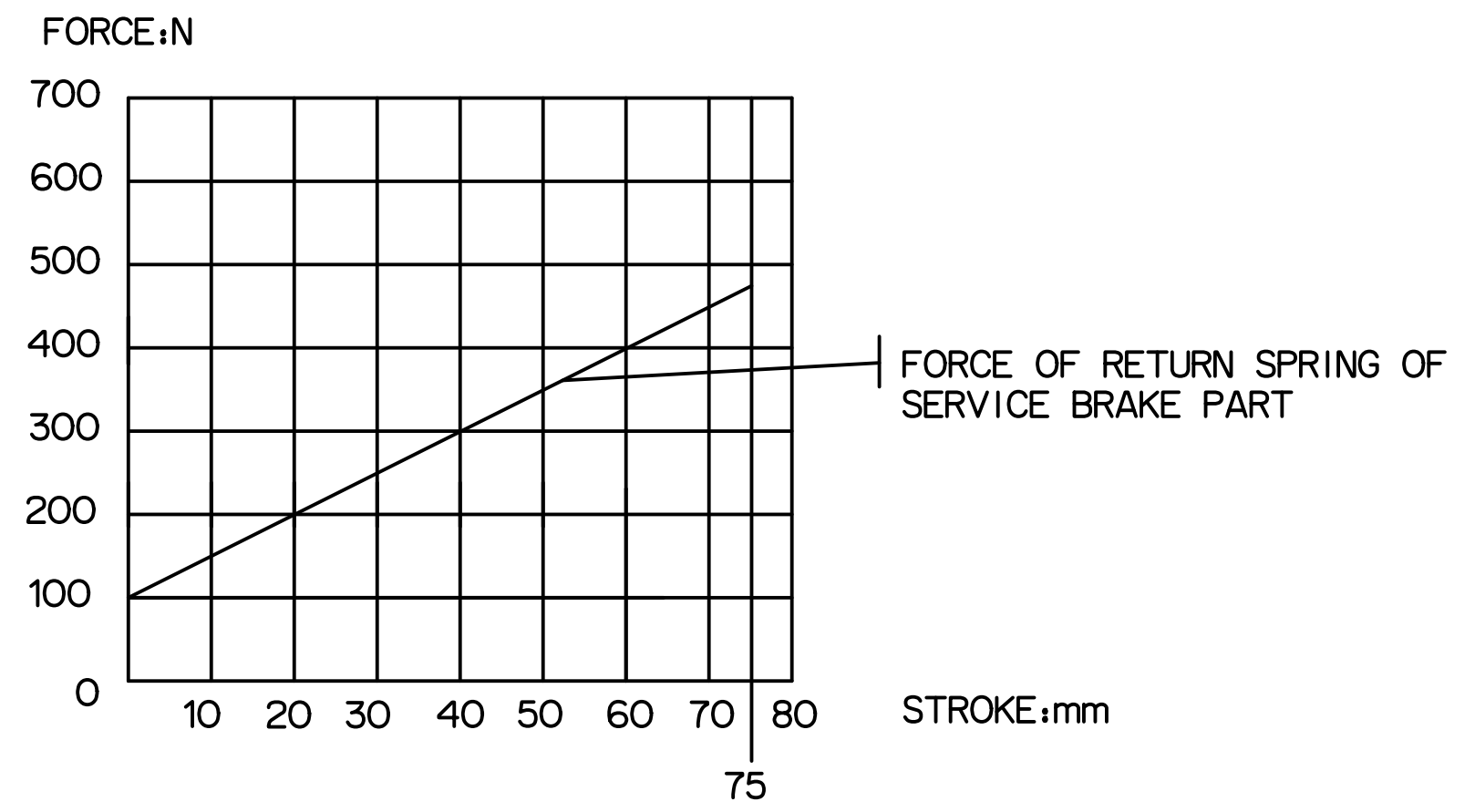
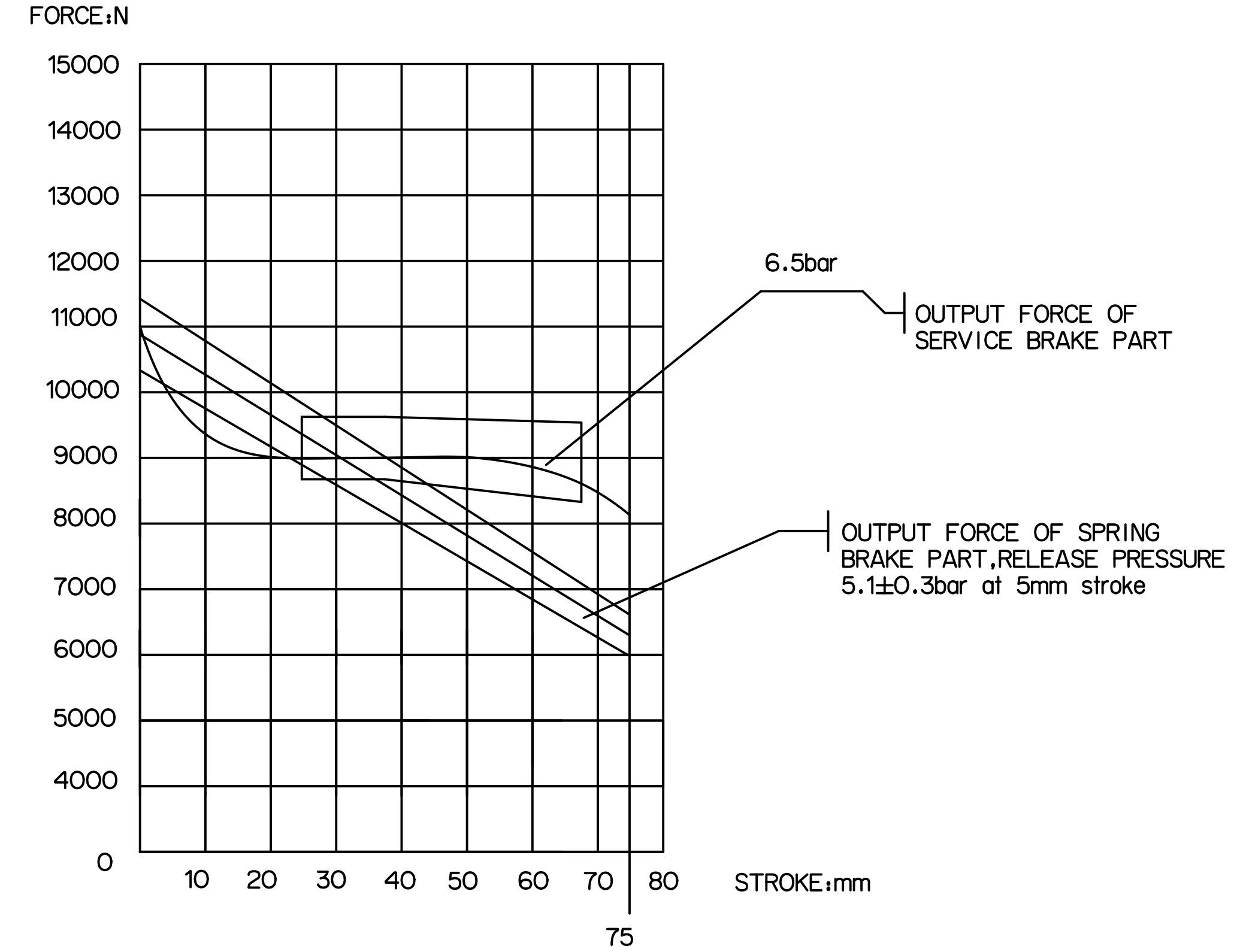
F VIEW



STICKER A VI

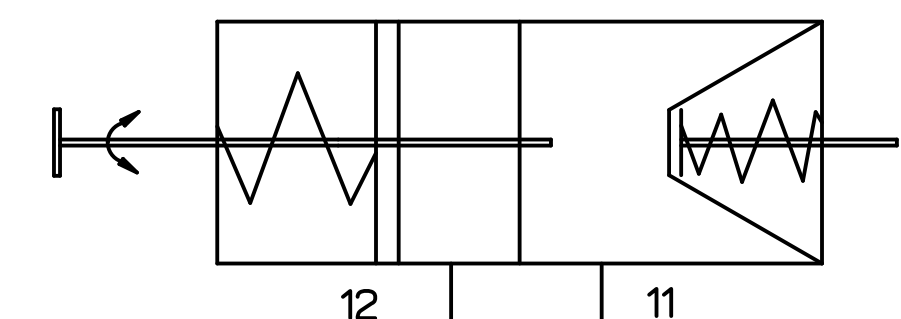
NOMINAL VALUES GIVEN FOR SERVICE SIDE, TOLERANCE BAND AS PER DIN 74060-3  
 NOMINAL VALUES GIVEN FOR SPRING SIDE, TOLERANCE BAND  $\pm 5\%$

GRAPHS FOR INFORMATION ONLY



- TECHNICAL REQUIREMENT:
- STROKE:  
SERVICE BRAKE:  $\geq 75\text{mm}$   
SPRING BRAKE:  $\geq 75\text{mm}$
  - WORKING PRESSURE:  
SERVICE CHAMBER: Pmax 10, 2 bar, TEMPORARILY 13 bar;  
PARKING CHAMBER: Pmax 8.5 bar, TEMPORARILY 11 bar.
  - WORKING TEMPERATURE:  $-40^{\circ}\text{C} \dots +80^{\circ}\text{C}$  ( $-40^{\circ}\text{F} \dots +176^{\circ}\text{F}$ )
  - THE DRAWING IS AT CAGED CONDITION, THE PARKING CHAMBER WILL BE AT UNCAGED CONDITION DURING SHIPMENT;
  - WORKING MEDIUM: AIR.

- TORQUE:  $\geq 35\text{Nm}$
- RELEASE POSITION, RELEASING WITH: 80Nm MAX.
- DRIVING POSITION, TIGHTENING WITH:  $25^{+20}_0\text{Nm}$
- TORQUE: MAX. 53Nm
- ADMISSIBLE INSTALLATION POSITION
- TORQUE:  $210^{+20}_0\text{Nm}$
- DEFLECTION: 8° MAX AT STROKE: 0 mm
- TO BE INSTALLED WITH LOWER BREATHER HOLE OPEN



CIRCUIT DIAGRAM

General Specification: ISO 8768, JED-354-1, Size ISO 14000 LP		Copyright ©		ProVia	
Further Technical Data: PRO 713 0410 0		Date:	Order:	TRISTOP - BRAKE ACTUATOR	
Doc. Code: 035	Sheet: 1 To 6	2024-07-30	Kanva		
General Tolerances: JED-261		2024-07-30	Venglesh		
Range of Nominal Dimensions ( ± mm)					
Class:	1	± 50	± 180	± 400	± 600
Fine:	X	± 0.05	± 0.1	± 0.15	± 0.2
Medium:	X	± 0.1	± 0.2	± 0.3	± 0.4
Coarse:	X	± 0.2	± 0.35	± 0.5	± 0.65
Tapped holes acc. JED-152					
1) Tolerances class: Appoint Chromomorph					
Dimensions in mm		Metric No.		Date of first issue: 2020-09-17	
A 0		57256		005 EN 1/1	