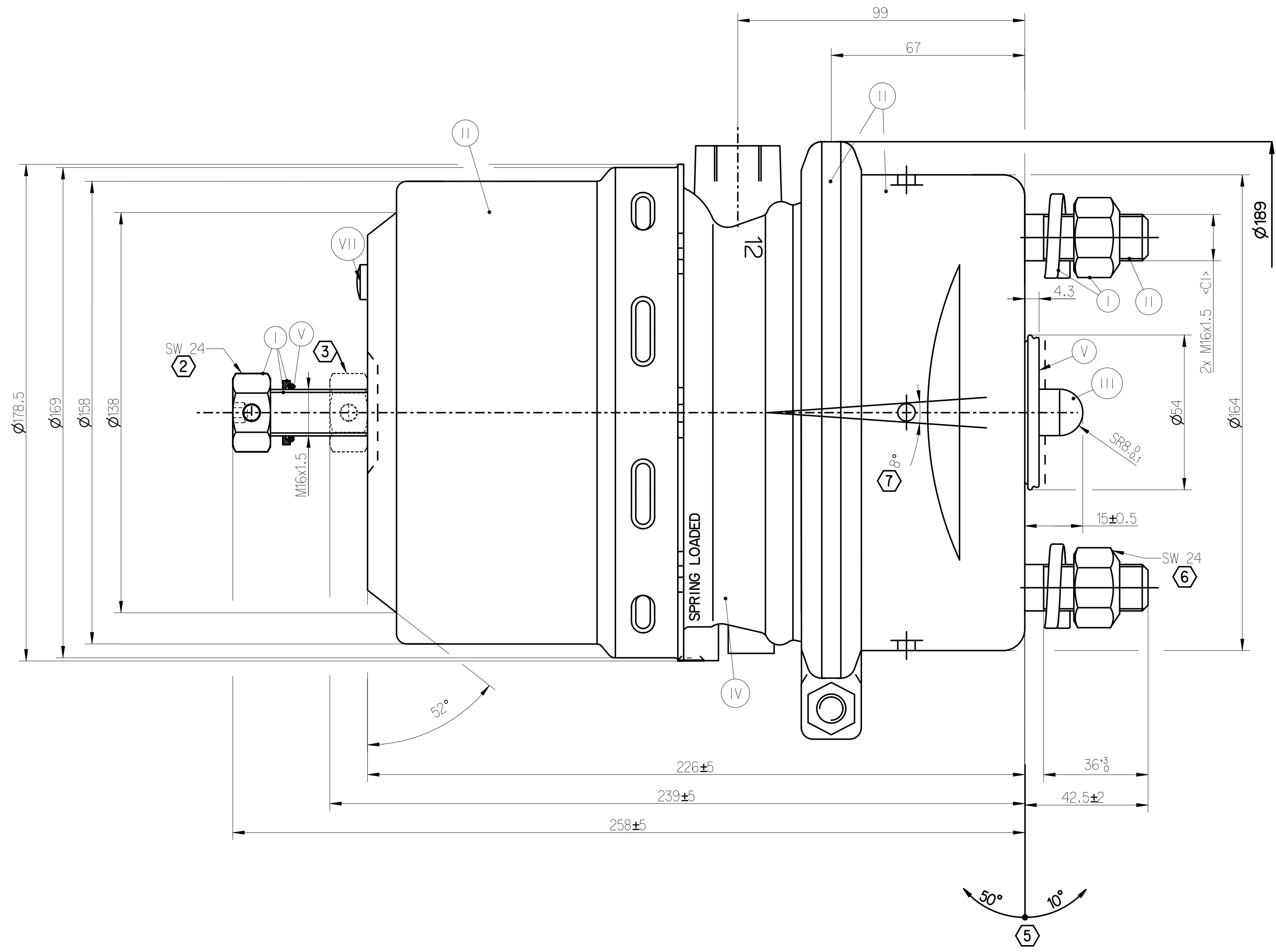
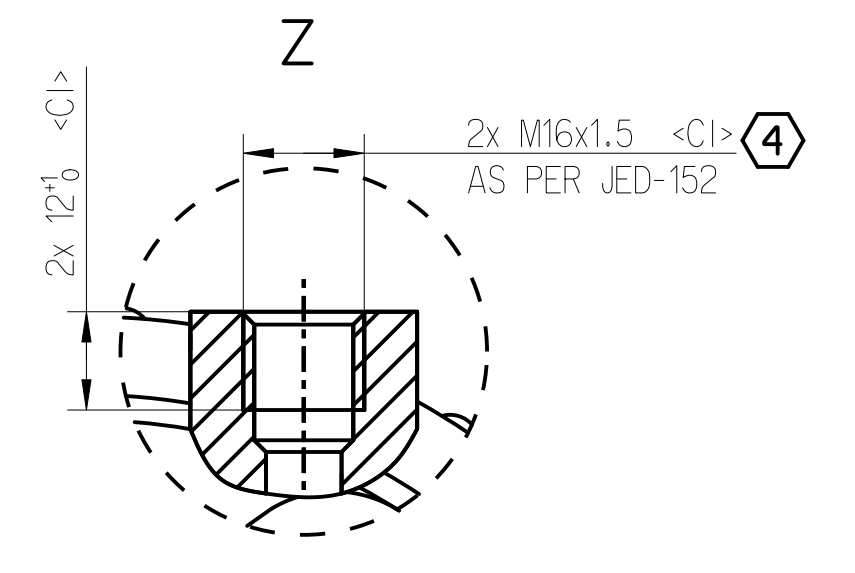
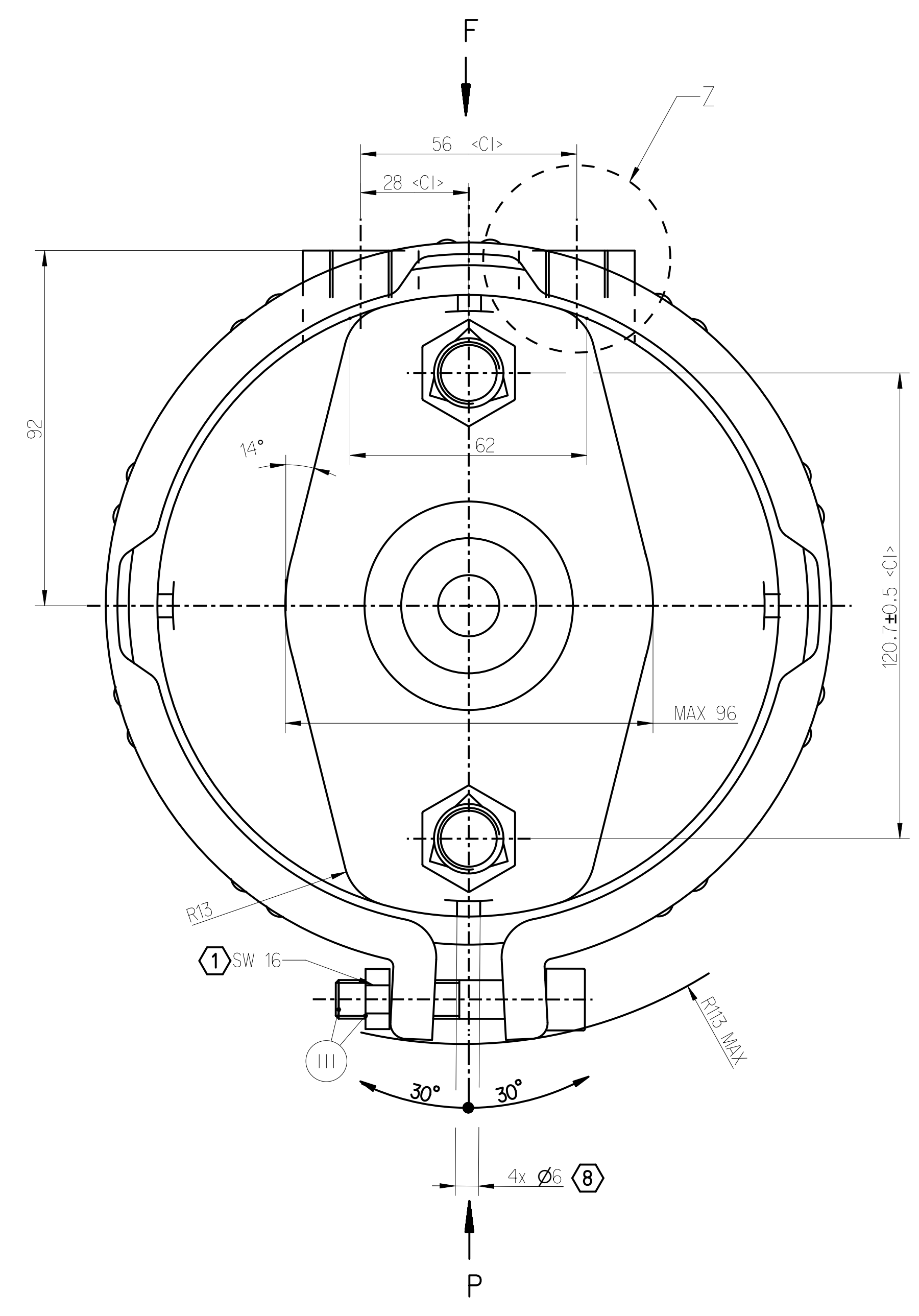
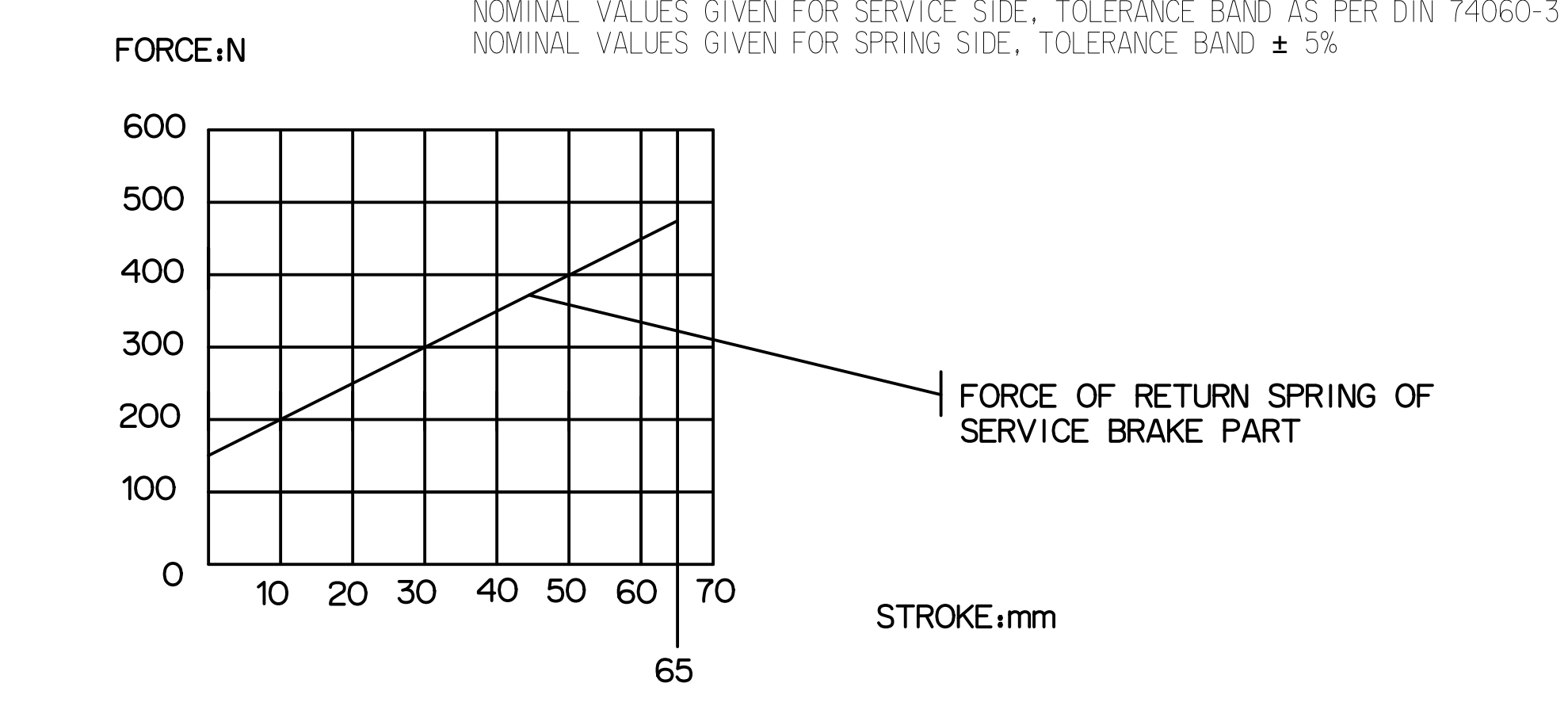
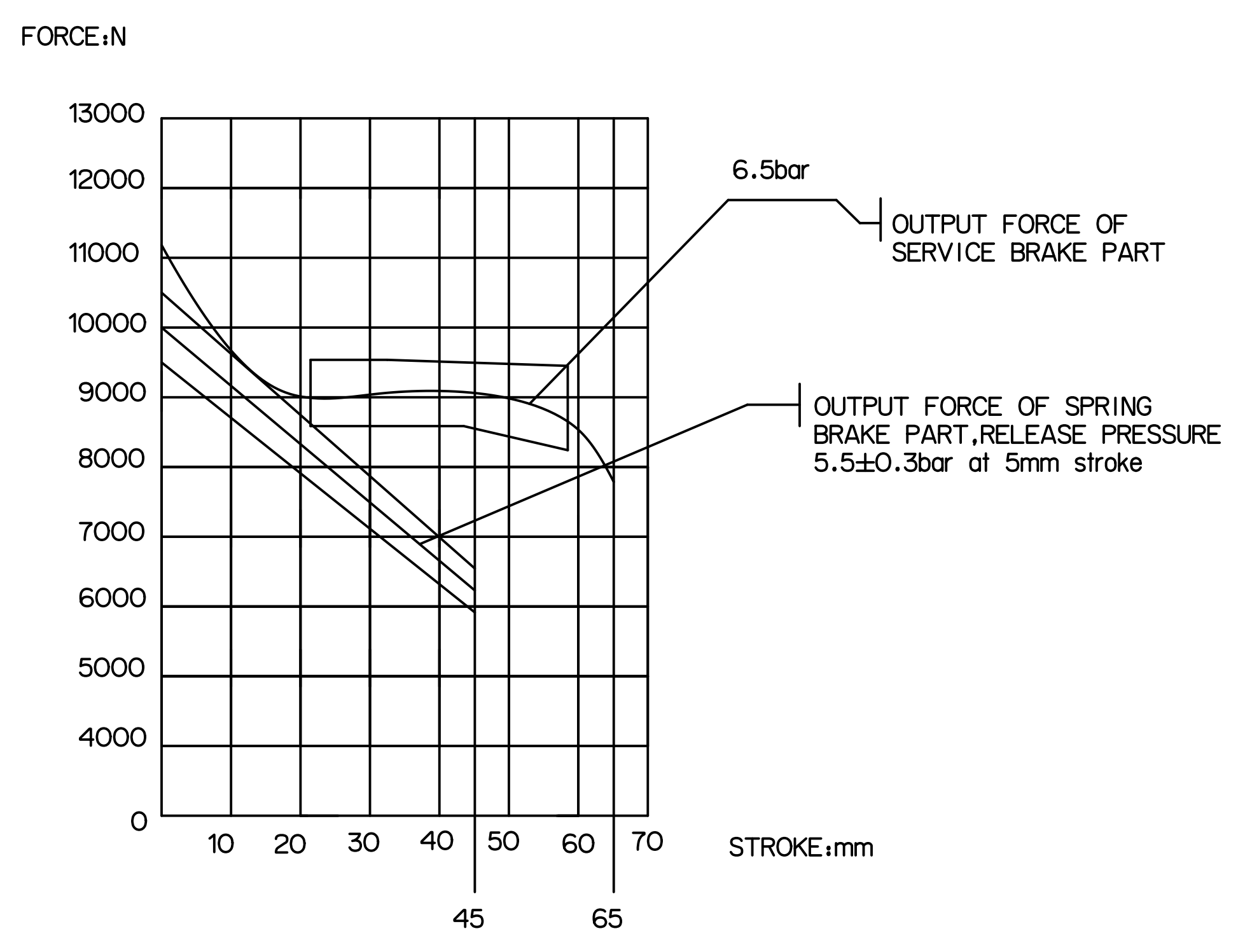


SURFACE PROTECTION	
I	ZINC PLATED WITH CR6+ FREE
II	ELECTRO-PAINTING
III	DACROMET
IV	SURFACE OXIDIZATION
V	RUBBER
VI	STICKERS
VII	BLACKENING

SAFETY CHARACTERISTICS	0
SIGNIFICANT CHARACTERISTICS	0
CUSTOMER INTERFACE	6

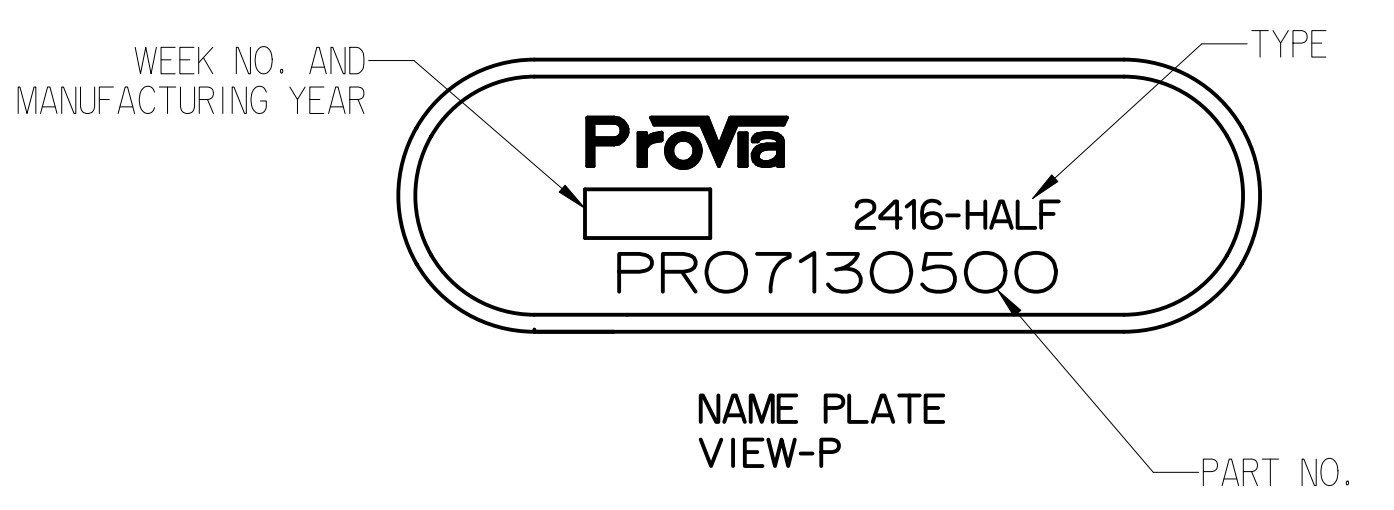
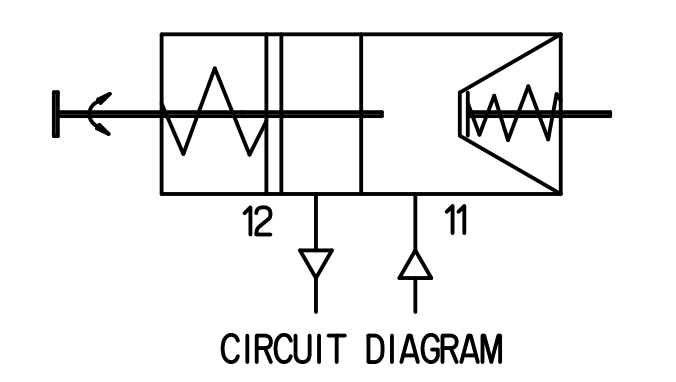
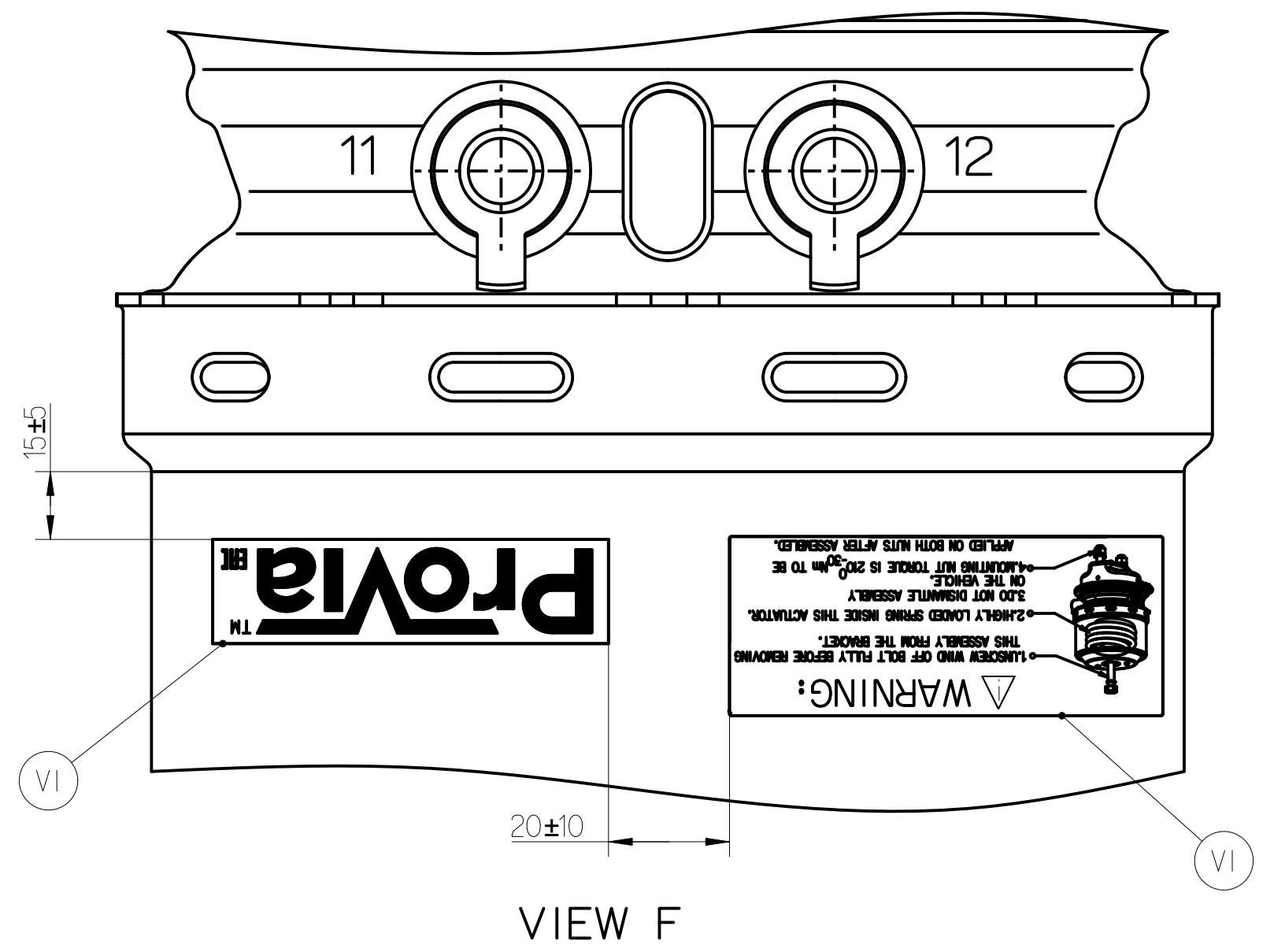
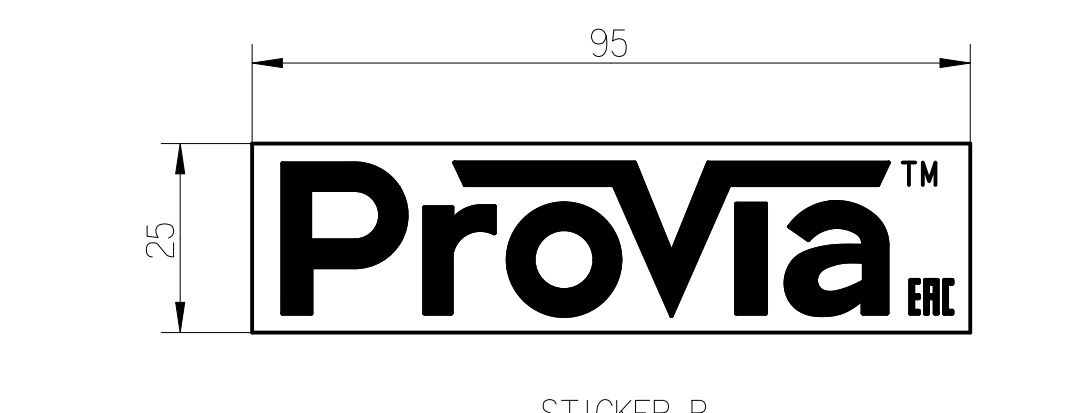
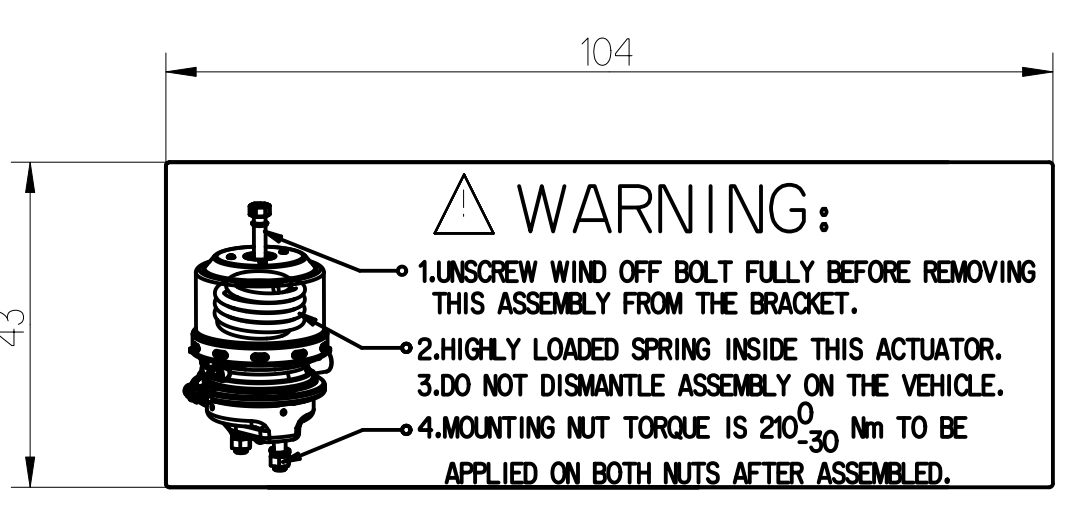


GRAPHS FOR INFORMATION ONLY



- ① TORQUE: $\geq 35\text{Nm}$
- ② RELEASE POSITION, RELEASING WITH: 80Nm MAX.
- ③ DRIVING POSITION, TIGHTENING WITH: 25^{+20}_0Nm
- ④ TORQUE: $\text{MAX. } 34\text{Nm}$
- ⑤ ADMISSIBLE INSTALLATION POSITION
- ⑥ TORQUE: 210^{0}_{-30}Nm
- ⑦ DEFLECTION: $8^{\circ}\text{MAX AT STROKE } 0\text{mm}$
- ⑧ TO BE INSTALLED WITH LOWER BREATHER HOLE OPEN

- TECHNICAL REQUIREMENT**
- STROKE:
SERVICE BRAKE: $\geq 65\text{mm}$;
SPRING BRAKE: $\geq 45\text{mm}$;
 - WORKING PRESSURE:
SERVICE CHAMBER: $P_{\text{max}} 10.2\text{ Bar}$, TEMPORARILY 13 Bar ;
PARKING CHAMBER: $P_{\text{max}} 8.5\text{ Bar}$, TEMPORARILY 11 Bar ;
 - WORKING TEMPERATURE: $-40^{\circ}\text{C} \dots +80^{\circ}\text{C}$ ($-40^{\circ}\text{F} \dots +176^{\circ}\text{F}$)
 - THE DRAWING IS AT CAGED CONDITION, THE PARKING CHAMBER WILL BE AT UNCAGED CONDITION DURING SHIPMENT;
 - WORKING MEDIUM: AIR.



General Specification: ISO 8768, JED-354-1, Size ISO M400 LF		Copyright ©		ProVia	
Doc. Code: 0350	Sheet: 1 To 6	Date: 2024-07-30	Drawn: Kalyan	TRISTOP - BRAKE ACTUATOR 24/16	
General Tolerances: JED-261		2024-07-30 Vengallesh		Revision: 005 EN 1/1	
Range of Nominal Dimensions (± a mm)		Dimensions in mm		Material No.	
Class	1	2	3	4	5
Fine	± 0.05	± 0.10	± 0.15	± 0.2	± 0.3
Medium	± 0.1	± 0.2	± 0.3	± 0.4	± 0.5
Course	± 0.2	± 0.3	± 0.4	± 0.5	± 0.6
Tapped holes acc. JED-152		NTS		PRO 713 050 0	
1) Tolerances class: JED-152		A 0		CSD	
Tapped holes acc. JED-152		ECC No.		Revision	
Tapped holes acc. JED-152		No.		C	